

THE IRIS CATALOG



BILTMORE NURSERY
BILTMORE, NORTH CAROLINA

Introduction



PATRONS AND PROSPECTIVE BUYERS who are interested in other kinds of plants, such as Flowering Trees and Shrubs, Evergreens, both coniferous and broad-leaved; Roses, Shade Trees, Vines, Ornamental Grasses and Bamboos; Aquatic and Bog Plants; Hardy Ferns; and all kinds of hardy garden flowers, such as Irises, Peonies, Larkspurs, Hollyhocks, Poppies, Pinks, and others, are invited to write for any of our catalogs. "Flowering Trees and Shrubs," "Hardy Garden Flowers," and our complete catalog, are all replete with pictures and information covering Biltmore plants. These books are free, on application, to any customer or prospective purchaser.

BILTMORE TREES AND PLANTS have been widely sought by discriminating buyers; the demand increasing to such an extent that we have been compelled to more than double our plantations and to prepare unique and attractive catalogs to place in the hands of inquiring friends and patrons who seek the best strains of ornamentals for their lawns and gardens. We appreciate the public confidence and the increasing patronage which has been bestowed upon us, and our efforts to uphold the high standard of our stock have been greatly stimulated by this encouragement.

BILTMORE NURSERY was established in 1889. The experience of many years is blended in the production and handling of our plants. We have no connection whatever with any other nursery and employ no agents, our entire business being transacted from our office at Biltmore, North Carolina.

OUR LOCATION is in the heart of the mountains of Western North Carolina, at elevations between two and three thousand feet above sea-level, where the temperature ranges from ninety degrees above to, in the instance of our higher fields, twenty degrees below zero. The main nursery is located on the northerly bank of the Swannanoa River, near its confluence with the French Broad, and between the corporate limits of Biltmore and Asheville. The manager's office is in Biltmore, three minutes' walk from the terminus of the Asheville-Biltmore electric railway, and diagonally opposite the Southern Railway passenger depot. The superintendent's office is at the greenhouses, ten minutes' walk from the end of the trolley line. We invite inspection of our grounds any day except Sunday.

EXTENT AND CAPACITY. Nearly three hundred acres are devoted to the cultivation of trees and shrubs. Our greenhouses and coldframes cover an area of seventy-five thousand square feet, which, in connection with seed-beds to the extent of more than three acres, a large force of trained men and many varieties of carefully tilled soils give us especial facilities for growing choice trees and plants on an extensive scale both in numbers and kinds.

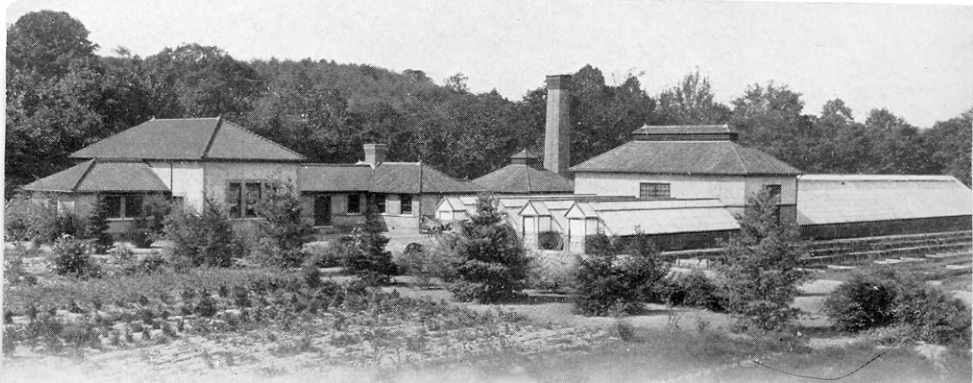
QUALITY OF STOCK. The variations in temperature peculiar to the Southern Alleghany region, its evenly distributed and bountiful rainfall, and rich but shallow soil, combine to produce a quality of stock remarkably superior in root-formation, thriftiness and hardiness. Biltmore Nursery is inspected annually by the State Entomologist, and a certificate pronouncing the stock free from all insects designated as dangerous pests, and apparently healthy in every respect, will be attached to every shipment. We are prepared to fumigate with hydrocyanic gas all or any nursery stock when state laws or customers require such treatment.

PLANTING PLANS AND HORTICULTURAL QUESTIONS. We are pleased to answer inquiries from friends or patrons concerning what to plant, how to plant, and when to plant. Our experience is at your command. Not only are we prepared to give advice, supply names of trees, shrubs and plants, either cultivated or wild, or to prescribe for plant diseases or attacks of insects, but we will gladly undertake, at small cost, to prepare plans for beautifying the home surroundings, showing a pleasing arrangement of paths and drives combined with an artistic grouping of trees and shrubs.

BILTMORE TREES AND PLANTS are growing from Maine to California and from Canada to Mexico, besides several countries across the seas. From the wording of the descriptions, it is an easy matter to select plants adapted to the local conditions of the average planter, whether it be a locality where severe cold reigns in winter or one where warmer sun prevails.

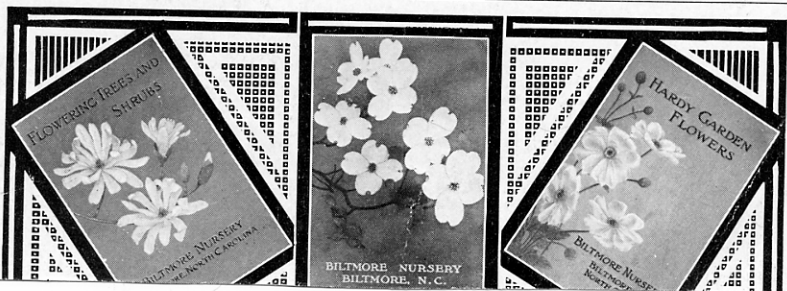
BILTMORE NURSERY

Biltmore, North Carolina



The Iris Catalog

BILTMORE NURSERY
BILTMORE, NORTH CAROLINA







The Story of the Iris

Few, if any, of the hardy garden flowers are more adaptable to every situation than are the Irises. They have a daintiness of their own that cannot fail to charm any one with the slightest taste for flowers. No orchid could be more delicately molded than are the Irises, and their range of color is almost limitless.

When one remembers that the Irises of a generation ago were confined to one or two blue-flowering species, indiscriminately called "flags," whether found in the gardens of our grandmothers or growing rankly in the old back swamp, and then considers what an assortment is offered him today, he realizes that a wonderful development has taken place.

The enthusiast, be he amateur or professional, now finds that the varieties of Irises he can plant is limited only by the size of his garden, so widely do these vary in habit of growth, in height, in soil requirements, in character of foliage, and in form and color of flowers. Nor is the blooming period limited to a few weeks—there are Irises that open up with the very early flowers of May, and there are others that follow them through the greater part of summer.

If ever a flower more fully deserved the homage of the gardener-enthusiast, or more richly repaid the time and trouble put upon it, than does the Iris, we do not know what it is. Starting with what might be termed the good old standards, the German Irises, with their tall, stately stems bearing the majestic crested flowers of purple and white, and passing through the other types, including the Siberians, the oddly formed Japanese species, and so on down to the glorified native kinds that delight in moist locations, every group will be found to contain something new, and interesting and beautiful.

The following pages show some of the varieties that have helped to make the Iris Department of Biltmore Nursery famous, with appropriate information as to planting and caring for them. The prices are for first-class stock in every case, packed to arrive at destination in prime condition.



Double Japanese Iris. Unrivalled in form and color

Tall Bearded Iris, Section Germanica

The German Irises are early-flowering plants, and the original group is well represented by the old-time "flags," by which all Irises were formerly indiscriminately known. They are nowadays considerably amplified by many additional kinds, of which the following represent some of the choicest.

In the ensuing list will be found a goodly variety of colors, which will afford the planter ample opportunity to choose such shades or combinations as most strongly appeal to him.

These Irises are all distinguishable by the prominent beard or crest—generally orange-yellow. They are very popular and are exceedingly easy of cultivation. So far as possible, they should be planted in fairly rich, well-drained soil—above all things, avoid situations where water is likely to stand, and keep the ground well stirred to prevent a crust forming.

The best time to plant is during late summer; the next best is early spring. To keep the production of flowers up to standard, divide and replant every three or four years.

Alba. A distinct and exceedingly lovely Iris; flowers unusually large; pure white.

Amas. Of Asiatic origin. The flowers are exceptionally large; the standard, or upright petals, are deep violet, while the falls are sky-blue.

Kharput. Very large and handsome, with a lovely velvety texture. Standards violet-blue, falls deeper purple.

Purple King. A very showy and effective variety. Standards and falls of uniform purple.

Violet Queen. A pleasing combination of violet shades. The standards are violet-blue and the falls violet-black.

Vulgaris. Standards purplish blue; falls purple. Valuable for naturalizing. Strong plants, prepaid, 15 cts. each; larger sizes, purchaser paying transportation, 15 cts. and 25 cts. each.

Prices, where not otherwise specified, strong plants, prepaid, 25 cts. each; larger sizes, purchaser paying transportation, 25 cts. and 35 cts. each.

Six plants of any one kind will be furnished at five times the single rate, and a dozen plants of any one kind at ten times the price of each plant.

The roses were received, coming in fine condition, and have been planted. The care with which they had been packed was commented upon by several persons who saw them, and I called attention to the fact that it was the "Biltmore Way." We are expecting an abundance of blossoms and to draw from them an inspiration of the North Carolina hills. With kind regards, yours, GEO. F. BURBA, Dayton Daily News, Dayton, Ohio, April 15, 1911.

I write to inform you that the Wistaria plants you sent me by mail last spring are well and alive and have made fine and satisfactory growth this summer. I want to thank you once more for such fine goods and such fine treatment. Whenever I want anything more in your line, I shall write you enclosing my order for same. Sorry I don't want anything now. Yours very truly, W. R. CRONK, 221 Nepperhan Ave., Yonkers, N. Y., Sept. 15, 1910.

One box containing six American Holly and one *Picea excelsa* (gratis) received yesterday afternoon in good condition. I desire to take the opportunity to thank you for the very fine plants, really better than I expected to see, as well as for excellent packing. Very truly yours, J. W. S. CAMPBELL, Freehold, N. J., Aug. 4, 1911.

The shrubs and plants arrived in splendid condition. They have been in the ground almost a week now and not a leaf wilted. When the box was opened the water still lay on the leaves, and it was hard to believe they had come so many miles. Thank you very much for the gift of heather. Thanking you for sending such healthy, well-shaped plants, I am, most cordially yours, MRS. W. C. CHESLEY, 67 Revere St., Waterbury, Conn., June 23, 1910.



Purple King



Sections Germanica Neglecta and Amoena

NEGLECTA

Cordelia. Inner segments, or falls, lavender; standards lavender with a heavy purple blotch. An extra fine variety. Strong plants, prepaid, 25 cts. each; larger sizes, purchaser paying transportation, 25 cts. and 35 cts. each.

Neglecta. Pale lavender standards; falls purple, finely netted with white.

Othello. A very handsome and rather tall-growing variety. The standards are rich blue; the falls an intense, velvety dark purple.

AMOENA

Duc de Nemours. A very showy variety; flowers purple, edged with white.

Mrs. H. Darwin. A new, early, and altogether lovely variety. The flowers are pure white, the falls very lightly netted with purple toward the base. Blooms very freely.

Victorine. A most beautiful and rare Iris, standards and falls presenting unusual contrasts. The upright petals are white, mottled with blue; the falls are deep blue, mottled with white. Strong plants, prepaid, 25 cts. each; larger sizes, purchaser paying transportation, 25 cts. and 35 cts. each.

Prices of the above, where not otherwise noted, strong plants, prepaid, 15 cts. each; larger sizes, purchaser paying transportation, 15 cts. and 25 cts. each.

Six plants of any one kind will be furnished at five times the single rate, and a dozen plants of any one kind at ten times the price of each plant.



Victorine, with delicate and beautiful shades of color

Section Germanica Pallida

Albert Victor. A very fine, large variety; standards soft blue, falls delicate, lovely lavender.

Celeste. Grows about 2½ feet high; flowers light azure. Strong plants, prepaid, 15 cts. each; larger sizes, purchaser paying transportation, 15 cts. and 25 cts. each.

Mandaliscoe. A large, handsome and very early-blooming variety. Flowers rich lavender-purple.

Pallida Dalmatica. A rare and valuable variety, especially good for mass planting and for cutting. The

flowers are unusually large and fine, in tones of lavender; standards light, falls clear and deep.

Pallida Speciosa. Standards dark lavender, with lighter shadings; falls shaded with light purple. Strong plants, prepaid, 15 cts. each; larger sizes, purchaser paying transportation, 15 cts. and 25 cts. each.

Queen of May. Unique in that its colors are a departure from the violets and purples usually associated with Irises. The flowers are soft lilac, suffused with rosy pink.

Prices of the above, except where otherwise noted: Strong plants, prepaid, 25 cts. each; larger sizes, purchaser paying transportation, 25 cts. and 35 cts. each.

Six plants of any one kind will be furnished at five times the single rate, and a dozen plants of any one kind at ten times the price of each plant.

My little order, S. 2690, was duly received and I am pleased. I sent several small tentative orders to growers in the East. Results classified as "good," "indifferent," and "bad." Yours classified as "good." Of course the plants seemed very thrifty and vigorous and were well and carefully packed. In addition you gave me more value for the money in size and number of plants than any of the others of whom I bought. I am certainly well pleased to have made your acquaintance. Yours very truly, MRS. A. D. CLEVELAND, 53 West Avenue North, Portland, Ore., May 9, 1910.

Plants just received in beautiful condition; the best packed of any I ever bought. Accept thanks. Sorry I troubled you with an inquiry, but I thought my order might have been lost in the mail. In next mail after I posted the card, I received your letter, giving all the information I desired. Certainly do appreciate the kindness and consideration shown me. Again thanking you, I am, very respectfully, MRS. MAY T. CLUCK, Mountville, S. C., April 6, 1910.

The plants you expressed me on the 20th ult. to San Rafael came safely to hand yesterday, and I am pleased to report, opened up in perfect condition. I have received a good many boxes of plants in the past from various sources, but am frank to state have never before opened up a case packed as light and compactly, and at the same time with as much care for the welfare of the plants. It is now too late for further orders this spring, but I am looking forward to sending you another order in the fall. Thanking you for the care given my small order, as well as for the specimen of Juniper you sent gratis, I am, yours very truly, R. H. MENZIES, Care of Parrott & Co., San Francisco, Cal., April 4, 1911.

The plants were splendid specimens and reached me in good condition, beautifully packed. Apparently they are all living and doing well. I can scarcely tell you how much pleased I am to get such exceedingly large plants at so small cost. Of the fifteen plants I purchased of you just a year ago, I did not lose one, which is most gratifying. Yours very truly, WM. M. REDWOOD, Asheville, N. C.

The plants have arrived in excellent condition and I wish to thank you for your prompt attention to our order. Very truly yours, DANIEL FAIRCHILD, Agricultural Explorer in Charge, U. S. Dept. of Agriculture, Bureau of Plant Industry, Washington, D. C.



Pallida Dalmatica



Section Germanica Variegata

Ada. A delightful combination of unusual color. The standards are clear, bright yellow, the falls white, netted with brown.

Aurea. Considered the finest yellow Iris in existence. Standards and falls are a clear, beautiful yellow. Strong plants, prepaid, 15 cts. each; larger sizes, purchaser paying transportation, 15 cts. and 25 cts. each.

Darius. Wonderfully distinct and beautiful. Standards clear, rich yellow; falls lilac-blue, rimmed with white. Orange-yellow beard.

Honorable. A most effective combination. Standards golden; falls rich mahogany. Grows about 1½ feet high. Strong plants, prepaid, 15 cts. each; larger sizes, purchaser paying transportation, 15 cts. and 25 cts. each.

Innocenza. Delicate and lovely. Standards and falls are ivory-white, with a rich golden crest.

Maori King. Makes a strikingly brilliant display. Standards rich golden, falls velvety crimson, with gold margins.

Prices of the above, except where otherwise noted, strong plants, prepaid, 25 cts. each; larger sizes, purchaser paying transportation, 25 cts. and 35 cts. each.

Six plants of any one kind will be furnished at five times the single rate, and a dozen plants of any one kind at ten times the price of each plant.

With the plants I have been ordering from Biltmore, during the past two years, my place is beginning to make a beautiful showing; as you know, I have out now a quantity of Kalmia, Rhododendrons, Azaleas, etc. I hope, some day, to have the pleasure of showing same to your Mr. Beadle, as you have been so kind in offering suggestions and have taken so much care in sending me shipments. Yours truly, H. N. SAXTON, JR., care Knoxville Saw Mill Co., Knoxville, Tenn.

I beg to acknowledge receipt of your favor of the 22nd instant as well as your last shipment of plants, which arrived in very good condition, especially the Magnolia and Gardenia being very fine. Yours truly, ALFRED OEST, Oaxaca, Mexico, Oct. 31, 1910.



Innocenza. Glorious in raiment of white

Section Germanica Squalens

Appollon. Grows between 2 and 3 feet high. Standards are bronzy yellow, falls reddish brown.

Arnols. Standards lovely bronze, suffused with rosy tints; falls rich, soft violet. Very handsome.

Dr. Bernice. Very large, beautiful flowers with coppery bronze standards and velvety crimson falls. Strong plants, prepaid, 25 cts. each; larger sizes, purchaser paying transportation, 25 cts. and 35 cts. each.

Jacquiniana. Very distinct and beautiful. Standards bright coppery red; falls rich maroon.

Magnifica. One of the newer offerings in this class, and of a very unique color. The standards are olive-green, shaded with red; the falls are dark brownish red. Strong plants, prepaid, 25 cts. each; larger sizes, purchaser paying transportation, 25 cts. and 35 cts. each.

Shakespeare. Grows over 2 feet high. The standards are bronzy yellow; the falls maroon, netted with yellow.

Prices of the above, except where otherwise specified, strong plants, prepaid, 15 cts. each; larger sizes, purchaser paying transportation, 15 cts. and 25 cts. each.

Six plants of any one kind will be furnished at five times the single rate, and a dozen plants of any one kind at ten times the price of each plant.

Allow me to thank you for your favor of the 16th inst., and, furthermore, to say that the trees have just come to hand. They appear to be in good condition. I am having them planted today. Very truly yours, STUART W. CRAMER, Charlotte, N. C., March 24, 1910.



Shakespeare

I have received the plants of the order I sent a few months ago. All in very good condition and beautifully packed. I hope they will grow well. Yours truly, Amparo de Zeleaon, San Jose, Costa Rica, April 26, 1910.

The recent shipment of five *Diervilla hybrida steltzeri*, with the extra one, has been duly received, completing my order for shrubs. I am much pleased with the kind of material which you have sent and the promptness of shipment. Also please accept my thanks for the extra shrubs enclosed gratis, which are most acceptable and highly appreciated. Very truly yours, J. C. ARTHUR, Purdue University, Agricultural Experiment Station, Lafayette, Ind., Nov. 10, 1910.

The four Box plants have been received and planted out, and I have to thank you for the nice way in which they were packed. I have ordered and received a number of evergreens during my life, but I must say that these were packed more beautifully than any I have ever seen. Very truly yours, C. D. EPES, Nottaway, Va., May 11, 1911.

I have your letter of the 21st inst. The plants have all come to hand; those by mail and those by express, all in perfect order, and I thank you for the evident pains you have taken to oblige me, and also for the gratuity. I have tried to give them all a good reception and hope they will reflect great honor upon you. I may trouble you again sometime. Again thanking you, I am, very truly yours, A. SMITH IRVINE, Georgia Chemical Works, Augusta, Ga.



Magnifica. Superb in stateliness

Section Germanica Plicata (Aphylla)

Bridesmaid. A very handsome flowering Iris; the standards are white, softly shaded with lavender; the falls are soft lavender, netted at the base and irregularly marked along the edges.

Delicatissima. Flowers are white throughout, but with margin heavily and irregularly marked with blue.

Gazelle. White, heavily frilled, rich mauve. 28 inches high.

Prices of Delicatissima and Gazelle, strong plants, prepaid, 15 cts. each; larger sizes, purchaser paying transportation, 15 cts. and 25 cts. each.

Prices of the above, where not otherwise noted, strong plants, prepaid, 25 cts. each; larger sizes, purchaser paying transportation, 25 cts. and 35 cts. each.

Six plants of any one kind will be furnished at five times the single rate, and a dozen plants of any one kind at ten times the price of each plant.

Mme. Chereau. One of the most beautiful of its class. The flowers are pure white, with a broad and irregular border of clear blue, and are borne on strong upright stems that are often from two to three feet tall.

Mrs. Reuthe. Another extra-large and handsome kind. The standards are white, suffused and marked with steel-gray; the falls are white, with edges fluted with soft blue.

Plicata. Standards bright violet-purple; falls deep violet-purple, with lighter shadings.

Special Offers. A collection of seven German Iris, one each of the seven sections described in this Catalog, your selection of varieties, each labeled; strong plants, prepaid, \$1; larger sizes, purchaser paying transportation, \$1 and \$1.65.

A collection of 25 varieties of German Iris, including many of the most noteworthy and meritorious kinds, no two alike, separately labeled, our selection of varieties, strong plants, prepaid, \$2.50; larger sizes, purchaser paying transportation, \$2.50 and \$3.75.

The plants and shrubs came in fine condition and I am delighted with them and will know where to direct my friends as well as where to make my purchases in the future. Thank you for your trouble and the good plants you sent me. Yours truly, MRS. ALBERT A. FALK, Southold, N. Y., April 18, 1911.

Enclosed find warrant for \$167.64 in payment of bill for shrubbery shipment. This was received in excellent condition, and though much of it was ordered as an experiment we hope to save a large portion of it. Yours very truly, GEO. E. VINNEDGE, Supt. and Engr., Board of Park Commissioners, Fort Worth, Texas, Feb. 3, 1911.

The box of plants arrived a few days ago in nice shape, although they had been more than two weeks en route, owing, I presume, to the bad weather. Every plant will grow at once, I am sure. I cannot thank you enough for them. Yours truly, L. M. MAGNESS, Myrtle Point, Ore., Feb. 6, 1911.

I thank you for your letter of recent date and for sending me the Keystone Roses. They arrived in excellent condition and are already taking hold. Most of the shrubs you sent are fully at home, and are making a fine growth. I expect they will fully sustain your high reputation. Yours truly, ANSON D. MORSE, Gray Rocks, Pelham, Mass.

I received the Rose bushes tonight and they are in fine condition, but as I am to divide them with a friend who is to take the climbers, I wish you would tell me which are climbers and which are not. Thanking you again for your courtesy and promptness and awaiting an early reply, I remain, yours truly, JOHN A. CAVANAUGH, Cumberland, Md., March 17, 1910.

The stock was duly received and I am well pleased with it. Shall be glad to report to you later what success I have with the several plants, as I am looking forward with a great deal of pleasure to the flowering season. Yours truly, MRS. D. E. SPANGLER, Roanoke, Va., November 2, 1909.



Mme. Chereau

Tall Bearded Irises, Sections of Various Species

In this group we class a number of miscellaneous types, each possessing notable merit, but not particularly adapted to classifying with other groups in this book. While a number of these are sometimes classed with Germanica, this is not strictly correct, as the true Germanica includes only a few types best represented by the common Blue Flag.

The principal requirement in planting is to give a well-drained sunny situation where the surface roots can get a good baking during the summer. These types are particularly pleasing for planting in front of shrubbery, along the banks of small streams—providing their roots do not touch the water—or in other places where they can become naturalized. This applies particularly to the varieties *Flavescens* and *Florentina*.

Benacensis. Flowers very large and showy; standards deep blue, falls purple. Blooms quite early.

Cypriana. Standards pale blue, falls rich violet and unusually long. Very large and handsome, and a late bloomer.

Flavescens. Flowers are wonderfully delicate; soft yellow; very fragrant. For mass planting, and for cutting, this variety is unexcelled. Strong plants, prepaid, 15 cts. each; larger sizes, purchaser paying transportation, 15 cts. and 25 cts. each.

Florentina. Another excellent variety for cutting, and a very early bloomer. Flowers ivory-white, lightly tinged with lilac.

Florentina, Princess of Wales. Pure white; a grand variety.



Florentina

Florentina, Silver King. Flowers larger than Florentina and of purer white.

Kochi. A wonderfully free-blooming variety having many large flowers open at the same time. In fact, they are borne in such masses, and show so many flowers to each stem, that a single stalk is really a bouquet in itself. A number of the plants, blooming together, make a mass of color hard to describe or excel. Standard and falls rich claret-purple. Very handsome.

Sambucina. A very showy variety, so-called because its flowers have a fragrance like elder blossoms. The standards are coppery rose; the falls rosy purple with an orange-yellow beard, or crest.

Prices of Kochi and Sambucina, strong plants, prepaid, 15 cts. each; larger sizes, purchaser paying transportation, 15 cts. and 25 cts. each.

Trojana. Standards pale blue; falls rich violet-purple. Large, handsome flower.

Prices of the above, except where otherwise noted, strong plants, prepaid, 25 cts. each; larger sizes, purchaser paying transportation, 25 cts. and 35 cts. each.

Six plants of any one kind will be furnished at five times the single rate, and a dozen plants of any one kind at ten times the price of each plant.

Special Offer. One each of the three beautiful forms of Florentine Iris, strong plants, prepaid, 50 cts.; larger sizes, purchaser paying transportation, 50 cts. and 75 cts.



Silver King. Precocious and very fragrant

The shrubs ordered from you last fall are doing fine. Before another order can be placed we will have to extend the tile drainage, and this cannot be done until next fall, at which time I will be interested in shrubs and perennials. Very truly yours, CHAS. T. COPPOCK, Cincinnati, Ohio, April 10, 1911.

Your order of bulbs came O. K. and I hope all will live. Many thanks. Will give you another order soon. Sincerely, MRS. C. W. BRINSTAD, 15 Eucalyptus Road, Berkeley, Cal., April 18, 1911.

Plants arrived in good condition today. Thanks. C. C. MARTIN, Fostoria, Ohio, May 2, 1911.

Japanese Iris, Mikado Collection

These varieties are all of Japanese origin, and many of the fascinating old legends of the Flowery Kingdom are grouped about them. The leaves grow 12 to 18 inches long, and the erect flower-stems reach a height of 2 to 3 feet. The flowers often measure 6 to 8 inches across—their fantastic forms and odd colorings making them a most desirable addition to every collection. There are both single and double forms.

Japanese Irises will succeed in almost any good, mellow soil **if well-drained**—this is essential. They should be planted in late summer when dormant, but may be started in early spring when fall planting is impracticable.

Iso-No-Nami. Delightful combination of delicate blue and lavender.

Manadzura. Flowers very large; white, lined and tipped with blue. Tufted center.

Momiji-No-Taki. Very tall; flowers clear pink, with deeper lines.

Osho-Kun. A splendid large variety, and a late bloomer. Flowers very intense blue, with yellow blotches running into white.

Sano-Watashi. Six petals, broad and somewhat ruffled; silvery white with a golden stripe in the center of each petal. The flower spikes are very tall, and the flowers are unusually conspicuous and beautiful.

Prices of the above, except where otherwise specified, strong plants, prepaid, 25 cts. each; larger sizes, purchaser paying transportation, 25 cts. and 35 cts. each.

Six plants of any one kind will be furnished at five times the single rate, and a dozen plants of any one kind at ten times the price of each plant.

Senjo-No-Hora. Deep purple, with small gray spots and dashes.

Shippo. Rich blue, shaded with deeper purple, and delicately marked with white.

Shirataki. Very graceful when in bloom. Six petals; white with primrose blotches.

Shishi-Ikari. Pink, with white shading; crimson markings and orange blotches.

Shishi-Odori. Deep purple petals with prominent yellow lines.

Taiheiraku. Petals solid, rich purple, with orange-yellow blotches. Very fine.

Tora-Odori. Gray petals, suffused with lilac.

The two splendid roots of Red Peony came safely, and I write to say how glad I am to have them, and to thank you kindly. Respectfully, Mrs. J. E. BEATTIE, Greenville, S. C.



Sano-Watashi



Cassy and Lady Roberts, aristocrats of the Japanese Iris

Japanese Iris, Standard Collection, Double Forms

A pleasant suggestion of romance surrounds the Japanese Irises—a shadowy, mysterious something suggestive of an interesting people of whom so little, comparatively, is known. The Iris is more than an incidental matter to these quaint little brown folks; it is an object of reverence—a thing to look up to. Iris-blooming time marks a definite season for the Japanese, along with the cherry-blossom and the wistaria, the peony and the lily.

There is, indeed, a tradition—which, whether true or not, shows the exalted place which the Iris holds with the astute little Celestials—to the effect that certain types of the flower have been developed and treasured in the gardens of the emperor and their nobles for ages—as jealously guarded there as though they represented vast intrinsic worth. Rare types they are, no doubt—if the tale be true—but scarcely more odd or more lovely than those described on this page.

These Irises are distinguished from the popular Japanese Single Irises by the six-petaled flowers—standard single Irises have but three. They are a truly delightful type of this elegant flower and are comparatively easy to grow. Contrary to the belief of many, Japanese Irises will thrive in nearly any mellow, rich soil.

As a matter of fact, the commercial growers of Japan propagate these plants in their rice fields, which are flooded during the summer months but dry during the winter. This gives the Irises just what they need—plenty of water during their active growing period,

but a complete lack of it while in the dormant state. In the garden, therefore, a rich mellow soil which naturally retains moisture fairly well will prove excellent for the Japanese Irises—even a stiff, heavy clay showing a tendency to bake will do nearly as well if kept well cultivated to prevent a crust forming.

These Irises are quite rapid growers and the roots should be divided every third or fourth year; otherwise they literally starve to death. The very best time to plant them is from August 1 to October 1 in the North; further south, relatively earlier. Later plantings are dangerous in severe climates, because the frost is nearly sure to throw out the plant before the roots have become established. Unlike most other plants, Japanese Irises really do best if moved after active growth has commenced.

Artist. Lavender ground with violet-blue penciling.

Cassy. White, heavily penciled with sky-blue.

Clarissa. Rosy purple, shading to white.

Defiance. Rich, velvety crimson-purple.

Delicata. Pale mauve, shading to white.

Empress Queen. A grand large white.

Evelyn. Delicate rosy mauve, marbled and mottled on lighter ground.

Grand Duchess. Rich blue with yellow center.

Lady Ardilaun. White, bordered with rosy purple.

Lady Roberts. Rosy purple, with white veins and yellow center.

Picturata. White, with a broad border of rosy purple.

Portia. White, delicately veined with purple.

Prices of the above, strong plants, prepaid, 25 cts. each; larger sizes, purchaser paying transportation, 25 cts. and 35 cts. each.

Six plants of any one kind will be furnished at five times the single rate, or a dozen plants of any one kind at ten times the price of each plant.

I received the plants in good condition. Please send me your catalog of "Flowering Trees and Shrubs." MISS ZELDA CLEVENGER, 1644 Talbott Ave., Indianapolis, Ind.



The great, lightly poised blossoms of Empress Queen

Japanese Iris, Single Varieties

American gardeners, as well as those of the Flowery Kingdom, have produced many handsome specimens of this class, all of which show remarkable variations in color and petals.

Agnes. Large, pure white.
Bride. Superb white flowers.
Constance. White, suffused and bordered with rosy purple.
Esther. Light rose, veined and tinted with purple.
Favorite. White, delicately washed with pale blue.
Lady Margaret. Bright rose, with a white and yellow center. Charming.

Meta. Grayish white with bluish purple veins.
Rosea. Clear, silvery rose; perfect in tone.
Splendor. Pale rosy lilac, with deeper marks. Superb.
Sprite. Bright blue, splashed with white and lighter shades of blue.
The Queen. Extra large; pure white.
Violescens. Rich purple, very free-flowering.

Prices of the above varieties of Iris, strong plants, prepaid, 25 cts. each; larger sizes, purchaser paying transportation, 25 cts. and 35 cts. each.

Six plants of any one kind will be furnished at five times the single rate, and a dozen plants of any one kind at ten times the price of each plant.

Special Offers. A collection of 12 Japanese Iris, any of the varieties listed in the three sections, Mikado, Standard or Single classes, strong plants, prepaid, \$2.50; larger sizes, purchaser paying transportation, \$2.50 and \$3.50.

A collection of 25 Japanese Iris, our selection of varieties, containing many of the meritorious and noteworthy kinds, separately labeled, strong plants, prepaid, \$3.75; larger sizes, purchaser paying transportation, \$3.75 and \$5.

We have had from you several lots of White Pine, which have been very satisfactory stock. We have an inquiry now for 1,000 White Pines for planting next spring. What can you offer us? Yours truly, CHASE BROTHERS COMPANY, Rochester, N. Y., Sept. 1, 1910.

The plants remaining on the order sent you by Mrs. Henry M. Cist were received in good condition a day or so ago. We were very pleased to have the order filled this season. Thanking you for same, very truly yours, B. A. CIST, 258 Greendale Ave., Cincinnati, Ohio, April 26, 1911.

The trees came yesterday and in every way satisfactory. Accept my thanks for the Tulip tree sent gratis. Enclosed please find my check in payment. Yours truly, JAMES H. COWAN, Care of Claiborne, Tate & Cowan, Knoxville, Tenn., May 4, 1910.

The plants ordered from you arrived in good condition and are satisfactory in every respect. They are so well rooted that already in this balmy climate several of the shrubs are blooming. Very truly, MRS. T. P. DENHAM, Jacksonville, Fla., April 9, 1910.

I have just been advised by the gardener at Bluemont that the nursery stock arrived safely. It was eleven days on the road, which accounts for this tardy acknowledgement. Yours sincerely, MRS. THOMAS M. GALE, 2300 S St., Washington, D. C., May 3, 1910.

The Roses came today in fine condition and I was very much pleased with the way they were packed. Thank you for the Spirea. A surprise! Very truly yours, MRS. W. A. CRABTREE, Sanford, N. C., April 11, 1911.

Enclosed please find my check for \$5 for four small trees sent to Mr. Francis Valentine, "Umstad Manor," Eavenson Oaks, Pa. They carried beautifully and were most satisfactory in every particular. Very truly, MRS. H. TAYLOR ROGERS, 43 Grove St., Asheville, N. C., July 7, 1910.

I was delighted with my plants. Thank you very much for the extra one you so kindly enclosed. Sincerely yours, AGNES B. COPELAND, North Madison, Ind., March 11, 1910.

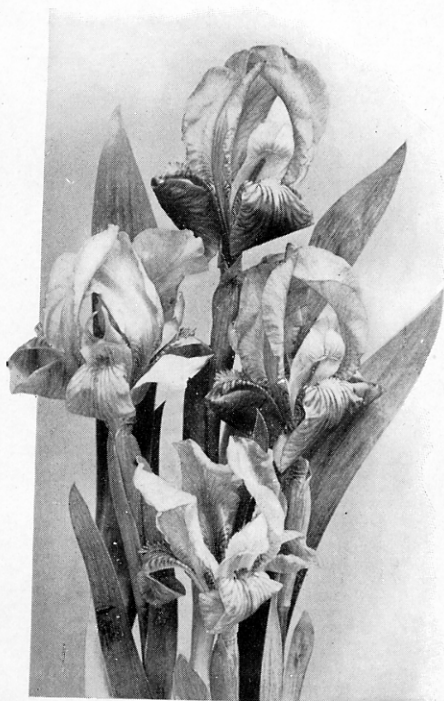


Lady Margaret



Iris Cristata. Smallest and daintiest of the Iris

Dwarf Bearded Iris



Types of Iris pumila

Pumila (European Dwarf Iris). Every Iris lover hails the season of the first types with delight and watches the fading of the last with sincere regret. Anything that will prolong the blooming season, therefore, is a matter of great interest to all who give the Iris special attention. Herein lies one of the great values of the Pumila—they prolong the blooming season for at least two weeks. Narrow leaves, 2 to 4 inches long; blossoms abundantly in spring. Fine for massing, edging and forcing. The standards are violet-blue, the falls deep purple. Strong plants, prepaid, 15 cts. each; larger sizes, purchaser paying transportation, 15c. and 25c. each.

Pumila alba. White flowers.

Pumila atrovioacea. Deep purple.

Pumila azurea. Light blue.

Pumila lutea. Creamy yellow.

Cristata. A very low-growing, creeping variety, with dainty little blue flowers. A fine addition to the rock-garden.

Prices of the above Iris, except where otherwise noted, strong plants, prepaid, 25 cts. each; larger sizes, purchaser paying transportation, 25 cts. and 35 cts. each.

Six plants of any one kind will be furnished at five times the single rate, and a dozen plants of any one kind at ten times the price of each plant.

Special Offer. One each of three varieties of Dwarf Bearded Iris, your selection, separately labeled, strong plants, prepaid, 50 cts.; larger sizes, purchaser paying transportation, 50 cts. and 75 cts. each.

Referring to yours of the 5th inst., I note your fairness in offering to supply me another *Abelia rupestris* for the one sent me which was injured. I greatly appreciate this; but if you have not sent same, please do not, as the one you sent gives every indication of living. It is a fine specimen, and I have nursed it carefully. Again let me add my appreciation of your generous treatment. Yours very truly, L. H. CHAFFINCH, Easton, Md., April 14, 1910.

The plants arrived safely and in good condition. I have never seen so many roots on small plants, and think they ought to make a fine growth this year. Very truly, E. H. CROSBY, Catonsville, Md., April 18, 1911.

Siberian Iris

Originated in Siberia. Plants have tufted stems, 2 to 3 feet tall, heavily leaved at the base. This species is particularly suitable for mass planting, and the flowers are excellent for cutting. May be planted around pools or along banks of streams where the roots will touch damp soil, but if water stands around the crowns, they will decay and die.

Sibirica. A slender, graceful, tall-growing Iris, with flowers quite similar to those of the German Iris, but smaller and much more numerous. The plants form large, strong, compact clumps, and bloom so freely that the deep blue flowers give almost a solid color effect. Strong plants, prepaid, 15 cts. each; larger sizes, purchaser paying transportation, 15 cts. and 25 cts. each.

Sibirica acuta. Very dwarf; flowers blue, netted with white.

Prices of the above, except where otherwise specified, strong plants, prepaid, 25 cts. each; larger sizes, purchaser paying transportation, 25 cts. and 35 cts. each.

Six plants of any one kind will be furnished at five times the single rate, and a dozen plants of any one kind at ten times the price of each plant.

Special Offer. One each of three varieties of Siberian Iris, your selection, separately labeled, strong plants, prepaid, 50 cts. each; larger sizes, purchaser paying transportation, 50 cts. and 75 cts. each.

Sibirica alba major. Very large, pure white flowers borne on long, upright stems.

Sibirica sanguinea. Flowers brilliant blue; buds enclosed in bright red covering.

Sibirica sanguinea, Blue King. A comparatively recent introduction. Flowers beautiful clear blue. One of the most beautiful of the newer sorts.

Sibirica sanguinea, Snow Queen. Very large, creamy white flowers.

The Roses arrived safely and in good condition this morning. Thank you very much for the two you have given me. Yours respectfully, MRS. W. A. MCKINNEY, 187 Court St., Binghamton, N. Y., June 13, 1911.

The plants of *Stenanthium robustum* reached Sir Josslyn Gore Booth, at "Lissadell," Sligo, Ireland, in good order. Many thanks for your careful packing. MRS. H. L. FAIRCHILD, 37 Fifth Ave., New York, N. Y., March 6, 1911.

The two to three ft. Pine trees were especially fine and out of 5,000 only two trees died. This is more remarkable as it was impossible to give them any artificial watering and the site was an exposed hill top. Yours truly, OGLESBY PAUL, Landscape Architect, 220 S. Fourth St., Philadelphia, Pa., June 26, 1911.

This is to acknowledge receipt of the Rose plants which came this morning in good condition. I thank you for your prompt attention to my order. Trusting that we may have success with them, I remain, sincerely, GERTRUDE GLIDDEN, 2239 E. 55th St., Cleveland, Ohio, April 11, 1910.

Please pardon my delay in acknowledging receipt of box of shrubs. All set out now, of course, and seem to be starting off well with few exceptions. You sent me fine stock and I am well pleased with it. Will want some perennials as soon as my hedges will break the winds. Yours truly, C. W. HALL, Lewiston, Idaho, May 26, 1911.

Plants arrived safely and in splendid condition. Let me thank you for your kind and courteous treatment. Yours sincerely, MARION CAULKINS, Knoxville, Tenn., May 10, 1910.

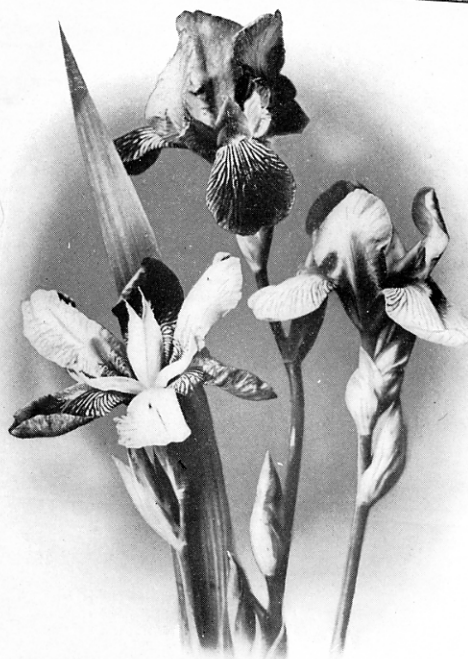


Iris Sibirica

Beardless Irises

The Beardless Irises are distinguished from others by the base of the falls, which is entirely smooth, instead of having the erect growth by which the Crested Irises are distinguished, or the delicate fuzz which denotes the bearded types. A number of the plants in the following list are distinguished not only for their flowers but for their foliage as well—notably *Aurea*, *Longipetala* and *Monnieri*. Under favorable conditions, the tall glossy green leaves will grow three feet high, while the flowers are borne on stiff stalks growing from four to five feet high. Grown in massed plantings, the effect of both foliage and flowers is most magnificent. Even well into the winter the foliage retains its color.

While fairly moist soil should be given the varieties classed under group "B," it should be borne in mind that this does not mean ground where water stands habitually. Along the bank of a stream where the roots would be inundated for days or even weeks, would not be an objection, provided the water then receded so that the crowns would not be submerged.



Iris versicolor

GROUP A

Delighting in well-drained, sunny situations.

Foetidissima. Purple flowers, maturing bright red seed-pods. The leaves remain green the year through and are valuable for winter decorations.

Fulva. Rich, coppery red flowers; very handsome.

Graminea. Narrow, grass-like leaves; prized both for these and for its blue and purple flowers.

Missouriensis. A very early bloomer and one of the best of the species. The flowers are lavender with a yellow spot.

Verna. Leaves narrow; flowers violet-blue with yellow center. Quite early.

Prices of *Missouriensis* and *Verna*, strong plants, prepaid, 15 cts. each.; larger sizes, purchaser paying transportation, 15 cts. and 25 cts. each.



Iris Pseudo-acorus

GROUP B

Thriving admirably under ordinary garden conditions. May be planted by the waterside if the crowns are kept well above the water.

Aurea. Very large, showy flowers of deep golden yellow. Originated in the Himalaya Mountains.

Longipetala. A beautiful flower, with violet-blue standards and white falls, distinctly marked with lavender and richly spotted with gold and bronze.

Monnieri. A vigorous grower, very handsome, with prominent, golden yellow flowers.

Monspur. Of very vigorous growth; fine for massing. Blue flowers, varying just enough in tone to produce lovely effects when planted in groups.

Prices of the above, except where otherwise specified, strong plants, prepaid, 25 cts. each; larger sizes, purchaser paying transportation, 25 cts. and 35 cts. each.

Orientalis. Exceptionally tall and vigorous. Flowers are large; creamy white, flaked with orange at base of falls.

Pseudo-acorus. Native to swampy lands; can be planted in wet ground. Has bright yellow flowers.

Versicolor. The popular native variety; has blue flowers, which remain open a long time.

Prices of *Orientalis*, *Pseudo-acorus* and *Versicolor*, strong plants, prepaid, 15 cts. each; larger sizes, purchaser paying transportation, 15 cts. and 25 cts. each.

The box of shrubs you so kindly sent by prepaid express arrived in fine shape and the plants are all up and doing nicely. Sincerely yours, MRS. M. SAYRES, Nyack, N. Y.

The shrubs came safely. Owing to a prolonged period of rainy weather it was some time before it was possible to plant them, but they are doing nicely now. Very truly yours, ETHEL F. SAYRE, 715 Averill Ave., Rochester, N. Y.

ORDER

THIS BLANK MATERIALLY AIDS IN FILLING YOUR ORDER PROMPTLY AND ACCURATELY

BILTMORE NURSERY
Biltmore, North Carolina

Send

State if you have selected prepaid sizes of plants, or those upon which you will assume transportation charges

To

Name _____

*P. O. Box, Street
or Rural Delivery*

Post Office.

County _____

State

Name of Railway.

Station or
Express Office.

Only when different from Post Office

Forward Now or About

Date _____

AMOUNT ENCLOSED

Cash .

¶

Send only in registered letter

Draft .

P. O. or Exp. Order

Stamps

If goods are wanted by express C. O. D., 25 per cent of the amount of the order must be paid in advance.

RECORDED

The prices in the Catalog are net. To avoid confusion, please extend the price of each item.

[illegible]

QUANTITY

NAME OF PLANTS

PRICE

Dollars

Cents

QUANTITY

NAME OF PLANTS

General Information and Instructions

SHIPMENTS. We have suitable plants of each grade of all the varieties listed. Such plants have been frequently transplanted, are shapely and select specimens, and represent honest values. They may be sent safely to any point having transportation facilities. Prepaid shipments are, of necessity, made up of smaller plants than those traveling at purchasers' expense; but invariably they are robust, well-established field-grown plants, and eminently satisfactory where the inconvenience or expense of heavier shipments is a deterrent. We reserve the right to forward prepaid orders by express or mail, and in the instance of packages weighing in excess of one hundred pounds, to effect delivery by freight.

OUR RESPONSIBILITY. We refer you to any bank or bankers in Asheville, N. C. We guarantee safe arrival and satisfactory condition of all shipments, unless, from the lateness of the season or extreme causes, we write for consent to waive responsibility. We are most careful to have all plants correctly labeled, and hold ourselves prepared to replace, on proper proof, all that may prove untrue to label, or to refund the amount paid therefor; but it is understood that, in case of error on our part, we shall at no time be held responsible for a greater amount than the original price of such plants.

PACKING. The utmost care will be used in digging and preparing the plants for shipment. There are no charges for packing or packing-cases, or for delivery to our freight or express depots, except in the instance of shipments to foreign countries, where the preparation is often an important item of expense.

RATES AND PRICES. The prices quoted in this catalog are net, and apply to unit quantities; but six plants of any one kind will be furnished at five times the single rate, and a dozen plants of any one kind at ten times the price for each plant.

TERMS CASH on or before delivery to forwarding agents. We prefer remittances by Post Office Money Order, Express Money Order, Bank Draft, or in Registered Letter. Money may be sent at our risk if forwarded by any of these methods; but we cannot assume responsibility for any remittance or order that fails to reach us, unless sent as above directed.

PACKING SEASON. We ship from October 1 to May 1, with the usual interruptions during winter.

CARE OF STOCK ON ARRIVAL. Promptly on arrival, the trees or plants should be unpacked and planted, or else the roots should be protected from sun or air by covering with moist earth. If the ground is frozen outside, or the packing material in the cases frozen, store the original package in a cool, moist cellar until the conditions are favorable for handling. Care should be taken in choosing soil and environment, to the end that success may reasonably follow your labors in planting.

CATALOGS SENT UPON REQUEST. We will gladly mail catalogs to any one interested in plants, or to friends in whose hands you would care to place a copy.

TREES AND PLANTS AS ANNIVERSARY PRESENTS. Orders are frequently received from patrons to send plants to special addresses as gifts or anniversary presents, with requests to convey to the recipients the proper form of acknowledgement, and in due time the items of stock selected. All such orders will be most carefully handled, and the plants definitely reserved for forwarding during the planting season.

CONCERNING BILTMORE PLANTS. We are frequently asked if plants grown in the North Carolina Mountains are adaptable to the climatic and other conditions existing in many sections of the country. They are, indeed, peculiarly resistant to changes of environment. Mother Nature develops her sturdiest children on the mountain plateaus, and they carry the vigor of the hills with them when transplanted to the plains and valleys. Experience has shown that trees, shrubs and plants grown in high elevations are remarkably hardy and vigorous when transplanted to lower levels, growing year after year in the new locations with undiminished vigor. A trial order, if nothing more, will result in lasting pleasure.

BILTMORE NURSERY

Biltmore, North Carolina