

The
Royal
IRIS
Gardens

1933

J. C. NICHOLLS, JR.
CAMILLUS, N. Y.

The Royal Iris Gardens

are located on the main road, U. S. Route 5, at the top of famous Camillus West Hill, eight miles west of Syracuse, N. Y., on the Syracuse-Auburn-Buffalo highway.

Visit Our Gardens

You are cordially invited to visit our gardens during the blooming season or at any time. The Bulbous begin blooming about April 1st; then the Dwarfs, Regelias and other early Species start about May 1st; the Intermediates May 15th, and the Tall Bearded May 30th. The best time to see the Tall Bearded is June 8th to 15th. From the 20th of June onward come the Siberians, Louisiana Species, Spurias, and other Beardless, lasting until the end of July. In August, September, and October the Fall Blooming varieties make a pretty show.

JOIN THE AMERICAN IRIS SOCIETY

\$3.00 a year

Four bulletins each year, with Iris notes, names of new varieties, and other interesting information. Checks should be made payable to the American Iris Society, and sent to the Science Press Printing Co., Lancaster, Penn.

A Catalogue

of the

Newest, Rarest and Finest

IRIS

A list of selected Novelties, the Best
Standard Bearded Irises, and a
comprehensive listing of
Beardless Species

The
ROYAL IRIS GARDENS

J. C. NICHOLLS, JR.

CAMILLUS, N. Y.



"The J. C. Nicholls Introductions in the Garden of the Originator, at Ithaca, N. Y."

Conditions of Sale

ORDER EARLY

An early order may avoid disappointment, as the stock of some varieties is limited, and orders are filled in order of receipt. All orders are accepted contingent upon condition and availability of stock at shipping time. Prompt cash refund for anything we cannot supply. **We never substitute unless requested.**

STOCK

All orders will be filled with strong, husky rhizomes that will be reasonably sure to bloom the first season. All our stock is kept absolutely true to name, the greatest care being exercised, all plants being grown in plotted block plantings. Our planting is new, and therefore clean of Iris borers and all diseases. We have arranged for inspection certificates required for Foreign shipments.

GUARANTEE

We guarantee all plants shipped to be true to name, vigorous, and healthy when received. Our guarantee ceases when the plants reach the Purchaser in good condition, as it is up to him to give them proper culture in his garden. Should any plant prove untrue, full and satisfactory restitution will be made at once. If, upon opening an order from us, any rhizome is defective in any way, please return it at once, and you will receive another root, or your money refunded, whichever you wish. Irises can be delivered in good condition to any point on earth reached by regular transportation.

TIME OF SHIPMENTS

All orders shipped prepaid. Shipment of Bearded Iris will begin July 25, and be concluded as quickly as possible; Beardless Iris will be shipped beginning September 1; Regelio-cyclus and Bulbous, October 15. However, all can be shipped as late as November.

TERMS

Cash with order. No order accepted for less than \$2.00. Prices net, except for a 10% discount allowed on orders of \$25.00 and over. **This discount does not apply to Collections.**

1933 SPECIAL OFFER

One root of the beautiful sky blue Iris, Gleam, will be given free with each order for \$10.00 or more; such order must be for two or more roots, and not include any Collection.

Foreword

Another Spring and Summer are at hand with all their wealth of glorious bloom, and the joy of making new acquaintances in the Iris world and of once again seeing our old favorites, whose beautiful colorings always seem even brighter and prettier than our memory of them.

Once again do we have the pleasure of traveling afar to visit the gardens of other Iris enthusiasts, seeing the newest introductions, and often seedlings as they unfold for the first time their gorgeous blooms to the eye of mankind. There is nothing more stirring than the joy and enthusiasm of an Iris Breeder as he first sees on some bright dewy morning a beautiful Iris which has just the color and characteristics for which he has been striving many years. There is no work nearer actual creation than to produce through one's own labor a lovely, glowing, living thing of utmost beauty, which will live through the centuries, unfolding each Spring its beauty before the eyes of the world.

Not the least of the joy of the Iris season is the making of new human acquaintances and friends, and seeing old friends on visits to others' gardens, or when they visit you. The love of beauty in flowers seems to kindle generosity and kindness in those who enjoy it, and leads to the most delightful of friendships. We hope that all who visited us last year will come again and renew the acquaintance.

Flower gardens can give one so much joy and satisfaction that many are turning to them for recreation and relaxation in these troublous days. There is nothing more delightful than to sit in the quiet dusk after a long hot day, and watch the shades of evening fall over well kept beds of beautiful flowers, while the robins chirp their twilight song. A beautiful garden is truly a haven where one can forget all of life's cares and worries.

* * * * *

It is with great pleasure that we place before the public our 1933 catalogue. In the last year we have added some 150 new names with descriptions to our list; new and highly praised novelties and many beautiful and rare species, from March blooming *Reticulata* to September blooming *Fulvas*.

Our list of Standard varieties is very complete and of high quality; we are proud of the many fine novelties one may see on a visit to our gardens. We believe the list of Beardless Species and their hybrids to be one of the most complete offered by any one, many Species not being listed elsewhere.

The compliments received on last year's catalogue, our first, were very gratifying; we wish to hereby thank every one who was so kind as to write us their appreciation and comment. The clarity and accurateness of our descriptions was particularly praised, and is a feature of which we are quite proud.

We thank our patrons of last year for their kind orders, and, in fact, feel quite complimented by the way in which the public has accepted us in our first year of business. Since we have given good service we are hoping for the privilege of filling repeat orders this year.

We feel satisfied that we are carrying on the Nicholls tradition of producing and shipping as fine Iris roots as are obtainable anywhere. Many letters were received commenting on the size and fine quality of the roots we supplied, many stating they were better than similar roots received from the West Coast.

* * * * *

It was pleasant to note that three of Colonel Nicholls' introductions received Honorable Mention from the Committee on Awards in December. They were Red Robe, Valor, and Crysoro. As all of these are very unusual colors and always attract much attention from visitors to the garden, we feel these awards are well deserved.

Although Colonel Nicholls is not introducing anything this year, there were many fine things that bloomed for the first time last June in his seedling fields. Several were the culmination of certain lines of breeding that have taken many years; others were gorgeous new breaks in color that were pleasant surprises. These will be introduced in 1934 and 1935.

Among them are some brilliant reds of glorious hue; rich browns, fine whites and large yellows, pinks, many delicate blends, and some good blues. Some of these have been described and mentioned in the A. I. S. Bulletins, and were rated by a few of the judges who saw them when they gave their first bloom last spring.

* * * * *

This year we are introducing a number of distinct forms and variations of the Louisiana Species, all of which were personally collected in the swamps and bayous of Louisiana. They are all fine colors and excellent additions to the Beardless field. Also, a fine form of *Prismatica*, collected by a friend.

We have had much pleasure in collecting them and enjoying their beauty in their native environment, and are glad to be able to offer them that others may enjoy them also. But it is not an easy task to collect them in their native swamps; at best it is very hard work.

One has to be both strong physically and have strong nerves to stand the tiring tramping through fields and ditches, wading in the mud and poisonous-green scummed, waist deep black water of dismal cypress swamps, where an alligator may be encountered at any moment, and where there are always plenty of water moccasins and occasionally rattlesnakes. One looks carefully first before reaching down to pull up an Iris root. And the old cypress trees, bearded with long streamers of Spanish moss, with swelling butts and wickedly pointed "knees," present a weird and most forbidding aspect. One never feels quite comfortable in among them, and always heaves a sigh of relief when he comes back out into the warm bright sunshine.

* * * * *

During the past Iris season we visited many Iris gardens, as well as an extended collecting trip in the swamps of Louisiana. Many of the newest Novelties were observed; some measured up to expectations; others did not. In New England the season was disappointing, most gardens being affected badly by the drought.

The chief result of these trips was to return home with the knowledge that Colonel Nicholls' introductions were even better than we had supposed. Not a one of them but which was quite superior in color to its nearest competitors.

Red Robe had absolutely no competitor in any of the gardens we visited; its large size and glowing deep ruby red color still set it completely apart. We understand that Joycette is in somewhat the same color class, but one of our most competent and conservative Iris judges informed us that he had rated Red Robe several points higher than Joycette, although the latter is the taller of the two. And since every visitor to our garden brushed heedlessly past large clumps of five Dykes Medal winners to get to Red Robe, we have no doubts as to its future popularity.

Valor was outstanding in the tall dark blue purple range, nothing being seen to compare to it. Valor is Colonel Nicholls' most perfect Iris, and will probably win more honors than Red Robe because of its perfection, but we predict that Red Robe will be even more popular with the Iris lover because of its gorgeous color.

Crysoro was quite the finest yellow Intermediate we found, and is still the deepest clear yellow of any Iris we have ever seen. Maygold was also quite distinct.

Nurmahal's rich brown was not approached by anything seen in the gardens visited; it is tall, large, of good shape, and much browner than Grace Sturtevant.

Aurex had the finest color and best height of any large Variegata we found, the others being shorter and without the clear contrast that features Aurex.

And of all the highly touted "reds," Red Flare, Numa Roumestan, Gobelin Red, Fire Fall, Fire Flame, Red Wings, Red Radiance, and all the others, not a one compared with either Spark or Red Elf for real redness of color, either in mass or individual bloom. Their intense popularity with all visitors seems to be quite justified.

Although lots of pretty blends were seen, Sea Dawn, Tokay, and Boadicea were found to be distinct and better than any compared to them. Tokay is a purer pink than any other, Boadicea was quite the liveliest and most beautiful of pink shaded yellow blends, and none was seen that approached the coppery rose of Sea Dawn. Tokay was found to give a particularly beautiful effect next to rich deep red purples, setting off their colors very well.

Gleam was acclaimed by all who saw it to be the best of the light blues of the Mary Barnett class. This is particularly gratifying as it has always been one of our favorites, and we have been confident that it would be accepted as one of our best Irises. Gleam is always one of the first choices of every visitor to the garden, whether he be an amateur or a grower.

Fire God and Shogun are unusual and pretty colors, different from any seen in any of the gardens visited.

Solitaire has a definite place in every collection; it is of rock bound hardiness, which gives it an advantage over the larger, semi-tender whites, is unexcelled in purity of color and firm substance, and is as tall and large as any white of proven hardiness. Solitaire, White and Gold, and White Star are all exceedingly floriferous, fast growers, and dependable bloomers, all qualities which the Iris gardener will appreciate. Solitaire was quite the best hardy white seen on our trips.



Aurex

Those Irises which we thought particularly fine and outstanding as seen in the gardens we visited, which were: Chancellor Kirkland's, Mr. Connell's, and Mr. Washington's, all at Nashville, Wayman's on Long Island, Mrs. Kellogg's at West Hartford, Miss Sturtevant's, Mr. Donoghue's, and Mrs. Nesmith's, and others around Boston, Mr. Harry Little's and our own at Camillus, and that of my father, Colonel J. C. Nicholls, at Ithaca, we will mention and compare below.

Nepenthe, of Mr. Connell's, stands out above all the rest, impressing us more than any Iris we saw. It is a soft pearly gray, with a faint rosy suffusion, all shot and dusted with glints and sparkles of gold. We thought it the most beautiful Iris seen in any of the gardens visited.

Next to Nepenthe we would rank Clara Noyes, a most beautiful peach red, which is a new and gorgeous color. Clara Noyes received more mention and praise at the A. I. S. Meeting than any other Iris.

Gilead was a splendid new color that cannot be described, but was very beautiful; a sort of orange amber blend; tall, large, and fine in every way.

Rose Dominion would come next in outstandingness; unlike any other, very large with horizontally flaring falls, a fine rose purple color. Its size and beautiful color made it a favorite with every one.

Deputé Nomblot stands out above the rest, being an enormous bloom with wide petals of a rich bronzy red purple all dusted with gold sparkles. Tall,

large, strong growing, and a wonderful color, it is all it is said to be, and is certainly one of our finest Irises.

Desert Gold was again one of the most beautiful Iris in the garden, and we still consider it to be the best all 'round yellow Iris we have yet seen. Tall, large, early, fine substance and good growth, and a beautiful light yellow. Its high quality is attested by its ranking next in the A. I. S. Awards to Rameses, the Dykes Medal winner for last year.

We particularly liked Wambliska, with its huge white blooms on tall stems, flushed at the center, not with blue, but with a most beautiful shade of heliotrope which adds to the beauty of the blooms. This gives a very beautiful effect that is quite distinct from any other Iris.

We were quite taken with W. R. Dykes, seen at the A. I. S. Show at Boston. Its enormous blooms were really gorgeous, being a beautiful, very pleasing deep golden yellow, the flecks of purple in the falls hardly noticeable. It is exceedingly worth while, in spite of its uncertain growth.

Others that were very outstanding were: Red Dominion, Black Wings, Zaharoon, Erebian, Aubade, Winnesheik, Honeydrop, Rameses, Pink Satin, Blue Hill, Persia, Indian Chief, Meldorie, Cyrus, King Juba, Red Radiance, Selene, Melchior, Mary Geddes, JEB Stuart, Eothen, Desert Dawn, Santa Fe, Rusty Gold, Sacramento, Legend, Easter Morn, Mabel Taft, Evolution, Polar King, Yves Lasailly, Messaline, Gaulois, Modoc, and Orange Guidon.

Of the older, lower priced Iris there were a number which impressed us as excellent: Lenzschnee, Eppo, San Diego, Romance, Opaline, Day Dream, True Charm, Rose of Cuba, Katharine McFarland, Van Cleve, Morning Glory, Querida, Le Printemps, Magenta, Bourem, Andante, Esterel, Silver Stream, Aurifero, and Chalcedony.

Among those which received especial praise at the A. I. S. Meeting were Clara Noyes, Joyeette, Van Cleve, Santa Fe, Crysoro, Blue Velvet, San Diego, Deputé Nomblot, and Alice Horsfall.

Dr. Kirkland's and Mr. Connell's things were all of uniformly high quality; many of them are mentioned above. Mr. Connell's Birmingham is fine, and something new in Intermediates, a Squalens blend, tall, large, and very pretty.

* * * * *

In regard to the much discussed ratings just published in the A. I. S. Bulletin, we have decided to wait until next year before changing and inserting new ratings in our catalogue. While we consider that these ratings are of great value to those who study Irises, we feel that they have to be interpreted to such an extent in relation to newness, price, number of judges, et cetera, that it would be better to await the symposium forthcoming this year, which will be much more complete. After all, the purpose of these ratings is to be an accurate guide to the purchaser in determining the relative values of different varieties, and if they do not do that, then they are of but little value.

J. C. NICHOLLS, JR.

Introductions for 1933

For eight years, until the establishment of our own business, we worked with Colonel Nicholls in crossing and hybridizing the Bearded Iris, making thousands of crosses each year, and studying hybridizing most carefully.

When the Royal Iris Gardens were started it was seen that all crossing and raising of seedlings must be entirely given up, both because of the vast amount of time required and for lack of the large area necessary. After such intense interest for so many years this was extremely hard to do, especially so when such fine results as Red Robe, Valor, and Crysoro had been obtained.

We expect this enforced abstinence to be only temporary; some day we hope again to be anxiously awaiting the first opening of new beauties resulting from our labor of crossing.

After all these years of crossing, it has remained for our first introductions to be, not the result of our own hybridization, but that of the greatest of all hybridizers, Mother Nature. Nature has accomplished more in developing new plants and always will than man can ever hope for. In fact, among these Louisiana Species, there is very little left to be added in the way of colors, the variation being about as great already as that attained by Bearded Iris at the present stage.

During the several collecting trips we made to the swamps of Louisiana we obtained many beautiful and outstanding varieties and forms of the Native Species, quite distinct from the types of those as named by Dr. Small and Alexander. Many unattractive forms were passed by for every one selected as beautiful.

Of these we have selected a number for introduction to commerce this year; all of them are beautiful, distinct, and fine garden subjects. They differ in color and other ways from the types of these Species offered by us, so that there is no duplication.

In discussion with Dr. Small, the original discoverer of these Species, it was deemed most fitting that they be given the interesting and unusual names of the localities where they were discovered, native Indian names, and those of persons important in the history of New Orleans, and of beautiful features of the city itself.

We have added a brief explanation of the names in most cases, to add interest and significance. Some of them have humorous turns, such as Chef Menteur; no one could explain just why the locality had been given that name, but it is quite apparent that at some remote time there was a strong doubt as to the veracity of some one in that section.

These names are used subject to approval by the English Iris Society.



Autum Fire, September 7th, 1932

Autumn Fire and August Flame are perhaps the most striking discovery in recent Iris development. They are Fall Blooming Beardless Iris, the first of this sort on record, blooming in late Summer and early Fall. Even if they did not have this remarkable habit of blooming so late in the season, they would both have been introduced because of their outstanding quality among the other Louisiana Species.

They were originally collected in Louisiana because of their large size and outstanding brilliancy of color, August Flame in 1930, and Autumn Fire in 1931, each in a different locality. They both are very strong growers of rampant increase, and very floriferous, with the most branched stalks we have ever seen on any Iris, each stalk having six branches as well as the terminal, the lowest branch starting only an inch above the rhizome. About twelve to fourteen blooms to each stalk.

They are apparently forms or hybrids of Fulva, but may prove to be new Species; their extremely fine branching and rampant growth sets them apart from all other Louisianas, which usually have only three to six blooms to the stalk.

They both bloomed in 1932, each on two mature and vigorous clumps, and with not the least appearance of abnormality. Both clumps of August Flame put up stalks at the same time which grew to full and normal stature and then opened their first blooms almost the same day. Both clumps of Autumn Fire did the same. Each variety formed seed pods which had almost matured when freezing weather came.

August Flame opened its first blooms August 7th, and continued into early September. Autumn Fire also bloomed in early August and continued well into September. Both were in flower for a month or more, making a very beautiful display.

AUTUMN FIRE (Nich. Jr. 1933). 40". A beautiful Fall blooming form of Fulva; a brilliant fiery red, almost scarlet, in color; styles a little deeper than the petals. Large blooms of fine shape with broad segments, carried on tall exceedingly well branched stems. Each stem has from five to six side branches, carrying a total of 12 to 14 blooms; the lowest branch starting almost from the rhizome. Blooms for over a month, from the middle of August to late September, the scarlet of its flowers being very beautiful against the deep green of its luxuriant foliage. \$7.50

AUGUST FLAME (Nich. Jr. 1933). 40". A brilliant August blooming form of Fulva, flowering almost that entire month, and on into September. Large blooms of flame red, a little lighter than Autumn Fire, the styles being the same color as the petals. The same perfection of branching as Autumn Fire, five to six side branches bearing a dozen or more shapely blooms. Both are exceedingly vigorous and rampant of increase, with fine deep green foliage. \$7.50

BAYOU BARATARIA (Nich. Jr. 1933). 48". A very fine pale china blue form of Giganticoerulea. A very pure color and a delightful shade of blue; tall and large. Named for one of Louisiana's beautiful tree lined bayous where it was discovered. \$4.00

BILOXI (Nich. Jr. 1933). 48". A very large and handsome form of Giganticoerulea with pure gleaming white blooms whose falls are delicately flushed palest blue. "Biloxi" means "Sea Foam" in the native Indian tongue. Very beautiful and distinct. \$5.00

CHARLES HARDEE (Nich. Jr. 1933). 36". Collected in North Carolina. Our richest and most handsome form of Carolina: very large flowers of brilliant dark blue with a very large and bright golden throat in contrast. Fine broad foliage. \$4.00

CHEF MENTEUR (Nich. Jr. 1933). 40". Very deep blue purple with a brilliant golden crest. A variant of Moricolor, of the same dark velvety richness, but much bluer. This was found well hidden under some willows on the Chef Menteur Road near New Orleans. "Chef Menteur" means "Biggest Liar" or "Head Liar." \$7.50

ESPLANADE (Nich. Jr. 1933). 40". A brilliant red Fulva with black velvet streaks and areas on the petals. Very striking effect, and very unusual coloration. Esplanade is one of the most beautiful of New Orleans' palm planted avenues. \$3.00

FLORENCE ZACHARIE (Nich. Jr. 1933). 42". A very fine and distinct form of Giganticoerulea of unusual color, a beautiful soft heliotrope shade, with rigidly horizontal falls. Named for a granddaughter of Etienne Zacharie, who founded the Bank of Louisiana, the first in the entire Mississippi Valley. \$5.00

FRENIER (Nich. Jr. 1933). 36". Our largest and strongest growing form of Carolina. Very large pale mauve flowers with pretty golden throat. This was found at Frenier Beach, back among some very rare and picturesque old black palms. \$4.00

GEORGIAN BAY (Nich. Jr. 1933). 30". A very fine form of Prismatica. Much stronger in growth, larger, and deeper in color than the type, being a beautiful deep amethyst lavender. Discovered in Georgian Bay, Canada, by Mrs. P. R. Pope, of Ithaca. \$2.00

GENTILLY ROAD (Nich. Jr. 1933). 48". A fine deep brilliant blue Giganticoerulea. This is perhaps the handsomest and most typical of all the Louisiana Iris, and is therefore named in honor of Gentilly Road, where Dr. Small first discovered these remarkable Iris, and which has been one of the finest collecting fields. \$3.00



Spanish Moss and Cypress Trees; Good Iris Hunting Ground

IBERVILLE (Nich. Jr. 1933). 48". A Giganticoerulea of a clear, very true blue color of medium depth. Selected for its clarity and trueness of tone. Iberville was a prominent character in the early history of New Orleans. \$4.00

JAMES ZACHARIE (Nich. Jr. 1933). 40". A deep velvety blue black form of Vinicolor; a fine rich color of outstanding quality. Named for a grandson of Etienne Zacharie, whose bank, now the "Patio Royale," is one of the show places of the old French Quarter. \$5.00

LE VIEUX CARRÉ (Nich. Jr. 1933). 42". A tall, brilliant, very large flowered Fulva. Le Vieux Carré is the old, original walled city portion of New Orleans, now known as the "French Quarter," with its picturesque iron fretwork balconies and rich colors. \$3.00

LOUISIANA SUNSET (Nich. Jr. 1933). 36". An exceedingly beautiful deep velvety blackish blood red Fulva. This is the darkest and richest Fulva we have ever seen, and reminds us of the glorious sunsets of Louisiana, which paint Spanish Moss and cypress trees deepest blood red as night swoops down over the swamps. \$5.00

MANDEVILLE (Nich. Jr. 1933). 48". A beautiful pale lavender pink Giganticoerulea with ruffled petals of heavy substance. Large and tall, and a very unusual color for this Species. Mandeville was a prominent figure in early New Orleans. \$7.50

MARGOT CASTELLANOS (Nich. Jr. 1933). 36". A very beautiful soft old rose pink form of Fulvaurea. Golden crest on the falls. Named for a popular Creole belle of New Orleans. \$3.00

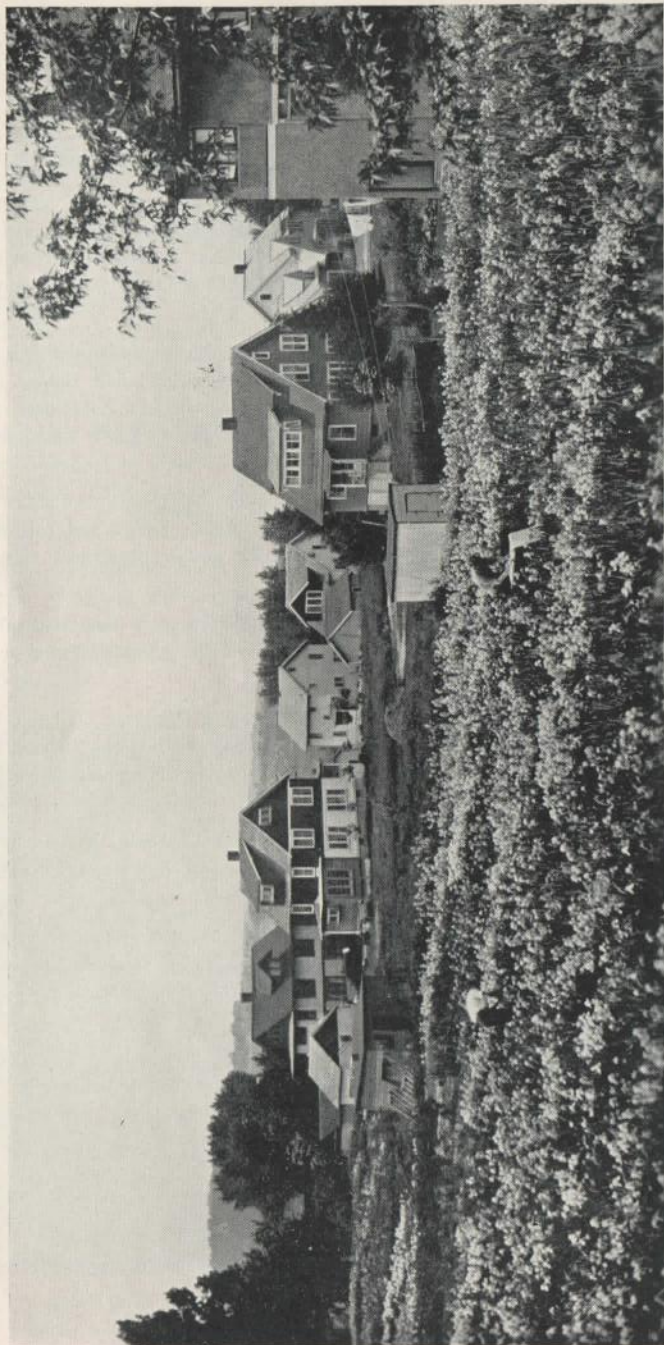
OGLETHORPE (Nich. Jr. 1933). 32". Collected in Georgia. A large handsome form of Carolina, with bright violet flowers with gold throat. Well shaped blooms with flaring falls; broad foliage. Named for him who did the most to colonize Georgia. \$3.00

POINTE ALA HACHE (Nich. Jr. 1933). 36". A Vinicolor hybrid of very rich deep blue purple. Found along the Mississippi levee near Pointe ala Hache, 50 miles below New Orleans. \$4.00

PONTCHARTRAIN (Nich. Jr. 1933). 42". A fine form of Chrysaecola with large beautiful pale mauve flowers with bright golden radiation at the throat. Lake Pontchartrain is the wide beautiful lake north of New Orleans, approached by Gentilly Road. \$4.00

SAZERAC (Nich. Jr. 1933). 36". A very brilliant bright red form of Fulva; selected for its fine color. Before Prohibition, Sazerac's place on Royal Street in the Old French Quarter was renowned the world over for his famous cocktails. \$3.00

SPANISH FORT (Nich. Jr. 1933). 45". A fine form of Giganticoerulea of pale blue veined and flecked a darker blue. In approaching New Orleans from the north, one passes the ancient ruins of the old Spanish Fort which guards the Rigolets, the passes from Lake Pontchartrain to Lake Borgne, and the Gulf. \$4.00



Colonel J. C. Nicholls and the author busy hybridizing in Colonel Nicholls' field of 6000 seedlings, June 1930

1932 J. C. Nicholls Introductions

There are many Iris seedlings introduced each year now, and the problem of what to introduce is increasingly difficult, because so many of the new ones are really good. It often happens that breeders widely separated will obtain almost identical results, and so two Irises quite similar in color will be introduced; this can only be avoided by extreme care and a very complete knowledge of the latest introductions.

Colonel Nicholls, after long observation in his trial garden at Ithaca, N. Y., and careful comparison with all similar named varieties, introduced the following in 1932. We are confident that all of these splendid Irises will demonstrate their high value as definite improvements and novel colors.

AUREX (Nich. 1932). 38". A very large, tall, brilliant Variegata of Ambassadeur size, height, and general shape of bloom, but with broader segments, and good branching, which its parent Ambassadeur lacks. S. bright clear yellow, medium deep, nicely domed and firmly held; the Falls are velvety blackish crimson purple, with a narrow, sharply defined edging of buff, and a brilliant yellow beard. The whole flower has fine lasting substance, and finished form. Aurex is definitely superior to Beau Sabreur, Decennial, and King Juba, and is without doubt finer than Claude Aureau or any of the other recently introduced variegatas. Fragrant, and a strong grower. **\$10.00**

AUTAUGA (Collected by A. H. Nicholls, Alabama, 1930). 30". Native Beardless. A very bright and carrying rose pink. Very floriferous and a mass of pink that is very beautiful in contrast with its deep green foliage. It is a form of Iris Carolina, and is perfectly hardy, growing strongly and blooming freely. It was greatly admired by all who saw it blooming last season. Stock quite limited. **\$5.00**

RED ELF (Nich. 1932). 26". A deep ruby red self of greater depth and brilliance than any other in its class. Deeper and redder than Spark, but later to bloom, as Spark is an Intermediate. Rather small blooms, but very floriferous, making a brilliant red mass. This and Spark are the reddest Bearded Irises we have yet seen, and are always greatly admired. **\$3.00**

SEA DAWN (Nich. 1932). 38". A rather large ruffled blend of coppery old rose, with a brilliant orange beard. Floriferous and a good grower, it makes a fine mass and has been very popular with visitors for the last two years. A novel and attractive color. **\$3.50**

SOLITAIRE (Nich. 1932). 38". A very brilliant gleaming white of medium to large size, nicely branched on tall stems. Has a brilliant yellow beard, and the fine shape and form of Gleam, one of its parents. Fine lasting substance, a good grower, and absolutely hardy. **\$3.50**



Valor

VALOR (Nich. 1932). 50%. Very large blooms of perfect shape and firm substance gracefully borne on tall beautifully branched stalks. S. deep anthracine violet, domed and firm; F. velvety blackish fluorite violet, shading to deep raisin purple at edge; bright yellow beard. In general effect a deep blackish blue violet bicolor, which some have considered an even finer and more outstanding introduction than Red Robe. Similar to Sir Michael, but larger and better shape. Very fragrant. The tallest and most outstanding Iris in the entire garden, invariably attracting every one's attention. *Honorable Mention, A. I. S. 1932.* \$15.00



FASCINATION

GRACE STURTEVANT

CORONATION

Prior Nicholls Introductions

BOADICEA (Nich. 1931). 38". A beautiful blend of soft yellow flushed light clear pink in both Falls and Standards, with a flush of bright sky blue at center of Falls. A good grower, very floriferous, bearing a mass of the delightfully ruffled flowers. Boadicea is between Vesper Gold and Tuscany Gold in tone, but its soft colors have a more lively and vivid glow than any of the other blends. Its colors are so bewitchingly beautiful that it charms every one. \$3.50

CRYSORO (Nich. 1931). 26". Intermediate. Crysoro has the clearest, deepest, most luminous yellow color of any bearded Iris. It is absolutely free from the old gold that gives the deep tone to Prairie Gold and other deep yellows, and is such a pleasing color that every one exclaims with pleasure at sight of its mass of deep glowing yellow. Its blooms are very large and ruffled, of good shape and fine substance. It is a good grower, very floriferous, and has a long period of bloom. Crysoro sets a new standard for deep clear yellow for both Intermediate and Tall Bearded Irises. *H. M., A. I. S. 1932.* \$7.50

FIRE GOD (Nicholls 1929). 40". S. reddish bronze, shading to honey yellow at base; F. deep brown garnet. In mass this gives a fiery brown that is very striking. By far the best brown toned iris. \$1.00

GLEAM (Nicholls 1929). 45". A beautiful pale sky blue self, lighted up by a brilliant orange beard. Purer and more refined blue than Mary Barnett or any other of this color class, Gleam has a large bloom of perfect shape and lasting substance. It is hardy, a strong grower, with well branched stalks that produce a wealth of bloom. Considered by many to be the best of its class. \$1.00

MAYGOLD (Nich. 1931). 28". Intermediate. Maygold has the same clear luminous tone as Crysoro, but in a light beautiful canary yellow. It has large smooth blooms of excellent substance and fine shape, borne in great profusion over a long period. It is well branched and a good grower. Both Crysoro and Maygold far surpass the older Intermediate yellows, with their height, large size, fine substance, and particularly, their pleasing color. \$2.00

NURMAHAL (Nich. 1931). 38". One of the richest and most outstanding Irises in the garden. S. bronze brown overlaid violet; F. very deep blackish brown crimson, with a hint of violet; beard a brilliant orange yellow. The S. are large and broad and well domed; the F. are broad, very velvety, and flare widely. The whole bloom has perfect shape and firm substance. Low and well branched, and a good grower. Similar to Grace Sturtevant, but browner in color, larger, better shape and substance, without cupping of S., better branched and flowers more gracefully poised, and a better grower than Grace Sturtevant. Fragrant. Stock very limited. \$15.00



TAHITI

GALE S. HILL
(NEW ENGLISH IRIS)

PACIFICO

RED ROBE (Nich. 1931). 36". The most brilliantly colored Iris we have ever seen. Its gloriously deep rich color immediately attracts the attention of all visitors, standing out among all the rest like a great ruby. Its blooms are very large, with very broad, circular segments of fine substance. S. very deep Petunia Violet, beautifully domed; F. intense deep velvety blackish red violet, uniformly colored to the very edge; beard bright yellow. The Falls are very velvety, and the S. far deeper than our other deep red purple bicolors. Red Robe is low and widely branched, bearing many of the enormous blooms per stalk, and is a good grower and free bloomer. Red Robe sold out very early last year, and again stock is limited. *Honorable Mention, A. I. S. 1922.* \$25.00

SHOGUN (Nich. 1931). 38". A new and very attractive color. S. and F. deep coppery maroon, with a brilliant orange beard; S. a shade lighter than Falls. The color extends well down on the claw, there being no light area at the haft. Well shaped blooms of excellent substance. Blooms of medium size on tall, nicely branched stalks; very floriferous and a strong grower. \$2.00

SPARK (Nich. 1931). 28". Intermediate. A wonderful new color in Intermediates, and redder than any other Bearded Iris except Red Elf. In color a very brilliant dark garnet red, S. slightly lighter than F., which are very velvety. Its mass effect is darker and much redder than Peau Rouge or Apache. Very floriferous, bearing its medium sized blooms in great abundance, and making such a fiery mass that it appeals to every one. Spark blooms with the Intermediates, but continues over into the early Tall Bearded season. A good grower, so its price is low. \$2.00

TOKAY (Nich. 1931). 36". A beautiful blend of soft pink tones. Both S. and F. are a lovely pink, blending with clear yellow at the heart of the bloom. A fine doer, and covered with bloom, making the prettiest and softest pink mass in the garden. Very popular and highly recommended. \$3.00

WHITE AND GOLD (Nicholls 1928). 37" Pure gleaming satiny white, with a brilliant gold beard. Of perfect form and finish, the blooms are of most lasting substance, and of large size for a hardy white. Stems low and widely branched, perfectly hardy, a fast increaser, and free bloomer. The purest and most dependable hardy white iris. \$1.00

WHITE STAR (Nicholls 1928). 37". Pure beautiful ivory white, with yellow beard. Flowers with flaring falls, of very long lasting substance. Neither a milk white nor a cream white, it is distinctly an ivory color. Hardy and a fast grower, it stays covered with bloom over a long period. Very floriferous. \$.50

Novelties

There are so many fine Irises introduced each year now that it is very difficult to pick out the best. However, in this list will be found those that are universally hailed as wonderful improvements, or have already proven their claims as superfine Irises. All of these varieties are definite improvements over older ones of similar coloring, or are of new and novel shades. Those that have been out a few years have been given ratings by the A. I. S.; many of the others will receive ratings this year, and these ratings should average even higher than those of the older novelties.

The name of the Iris is followed in parentheses by the name of the originator and date of introduction. The first figures after that are the percentage ratings for garden value of the American Iris Society; the second figures give the average height of stalk in inches. "S." denotes the Standards or upper petals; "F", the Falls or lower petals.

ALCINA (Connell 1931). 36". A fine blend of pale blue and yellow. S. pale yellow, with a flush of blue and gray; F. pale blue flushed with creamy yellow. Alcina is the blue extreme of Mr. Connell's fine blends, and is very pretty. \$4.00

ALLURE (Murrell 1927). 40". An exquisitely beautiful blend which is an entirely new break in color. Its ground color is rich canary yellow, flushed and overlaid with bright rose pink, while the beard and style arms are pure canary yellow. Its coloring is particularly soft and lustrous, and of wonderfully delicate beauty. \$1.00

AL-LU-WEE (H. P. Sass 1933). 40". A fine new Variegata- large, tall, well branched. Nice yellow standards and fine red falls; a good grower, and a welcome addition to this class. \$6.00

ANDREW JACKSON (Kirk. 1929). 36". A rich red violet that makes a fine mass of color very early in the Tall Bearded season. Vigorous in growth, with large flowers of heavy substance and good form. An excellent Iris very attractive for its earliness. \$1.50

ANNE MARIE CAYEUX (Cayeux 1928). 36". An exquisitely beautiful blend with large blooms of fine form and heavy substance. S. lilac pink suffused with gray and fawn; F. soft grayish heliothrope overlaid with metallic, iridescent blue. A very distinct Iris of unique coloring. *Certificate of Merit, S. N. H. F. 1929.* \$7.50

AUBADE (Connell 1931). 36". A beautiful blend, predominantly yellow. S. soft yellow, slightly suffused pink; F. clear yellow flushed rosy pink and pale gray. Its name, meaning "Dawn Song" is most appropriate, as it brings to mind a glorious golden dawn, with the lifting mists still gray in the hollows, but all rosy where the sun's rays touch them. \$12.00

R O Y A L I R I S G A R D E N S

BALDWIN (H. P. Sass 1926). 40". A huge manganese violet self with an electric sheen over the falls. A color different from any other in the blue purple range. Very floriferous. \$1.00

BEAU SABREUR (Wmson 1930). 34". An exceptionally fine Variegata with large blooms on tall well branched stems. S. bronze aniline yellow; F. ox-blood red. Very brilliant in color effect, and considered to be a great improvement over previous Variegatas. Strong, fast grower. \$1.00

BLACKAMOOR (J. Sass 1932). 36". One of the darkest of all Irises. An intensely deep, very black blue violet. It actually does not seem colored until half open. It has a blue beard, which increases the depth of color. An enormous bloom on a tall well branched stalk. *Honorable Mention, A. I. S. 1931.* \$5.00

BLACK WINGS (Kirkland 1931). A wonderful new "black" iris that is gorgeously deep in tone. S. deep Fluorite violet; F. deeper Fluorite violet, with black veins, and so very velvety that at some angles they are absolutely black. Blooms of good size, form, and substance, and a hardy, strong growing plant. Very fragrant, and a great achievement in breeding, as it is very nearly black. *Honorable Mention, A. I. S. 1931.* \$20.00

BLUE BANNER (Kirkland 1929). 38". Two tones of brilliant blue, of the type of B. Y. Morrison, but very large and handsome. By far the best in this color class, and a very unique and beautiful Iris. \$1.00

BLUE HILL (H. P. Sass 1931). 36". Nearly the color of Sensation, but larger flower on perfect branching stem. Introducer's description. Absolutely hardy, and a better grower and more floriferous than Sensation. \$2.00

BLUE MONARCH (J. Sass 1933). 45". "Deep bluish violet self. Large flower on 40 to 45 inch stems, low branching, 8 to 15 buds to a stem. This is the clearest light blue tone we have yet seen in an iris; a superfine iris." Introducer's description. \$20.00

BLUE VELVET (Loomis 1929). 46". A self color of the deepest, richest, most velvety blue. This wonderful iris is a Dominion seedling of extraordinary beauty, with large flowers of heavy substance borne on well branched stems. The flower looks just like the richest shade of deep, dark, blue velvet, being almost black when first open. This gorgeous iris is one of the most striking of recent introductions. \$5.00

CAMELIARD (Sturt. 1927). 46". A very tall variegata blend of Caterina size, shape, and height. S. yellow, overlaid and shot with bronze, F. yellow, washed with purple in center, and shot with bronze. An iris of great beauty, totally distinct from any other, and carrying variegata coloring into large blooms on four foot stems. \$1.50

CAMILLA DUBUAR (Lapham 1939). 30". A very pretty Iris of a pale pink color, that comes very close to being a real pink. Well branched, floriferous, and vigorous. \$1.00



Nurmahal



Crysoro

CHROMYLLA (Loomis 1930). 40". A uniform shade of clear lemon-chrome, with large blooms of refined shape and remarkable smoothness of texture and refined finish. *Award of Merit, A. I. S. 1932.* \$20.00

CLARA NOYES (H. P. Sass 1931). 36". A very warm, brilliant blend of Midgard shape and type. S. bright apricot, suffused rose red; F. peach, overlaid copper. A lovely medley of peach, salmon, apricot, and copper, that created a sensation wherever shown last year. *A. M., A. I. S. 1932* \$5.00

CLAUDE AUREAU (Cayeux 1928). 36". One of the finest Variegatas, very large and of impressive carriage. S. greenish golden yellow, in fine contrast with the Falls, which are intense Bordeaux red with a wide margin of bronzy gold. *C. M., S. N. H. F. 1929.* \$15.00

COLOSSUS (H. P. Sass 1931). 40". "The biggest American iris and probably the largest in the world, exceeding Nene. A dark purple of fine quality. Has produced blooms almost ten inches tall." *Introducer's description.* \$5.00

CYRUS (H. P. Sass 1931). 34". See Intermediates. \$1.00

DAUNTLESS (Connell 1928). 42". Very brilliant rose red of very pure tone, one of the most striking irises in the garden. Dauntless was awarded the Dykes Medal in 1929 as the most outstanding introduction of the year. \$4.00

DECENNIAL (Wmson 1930). 34". A striking Variegata of a new type of rounded and finished flower of firm substance. S. bright picric yellow; F. dahlia carmine with a narrow yellow margin. At the center of the Falls is an overdash of brilliant electric blue, a feature which makes this a very unusual Iris. \$5.00

DEPUTÉ NOMBLLOT (Cayeux 1929). 50". Widely acclaimed Cayeux's finest achievement, and hailed as the world's greatest Iris, Deputé Nomblot is truly magnificent. The huge blooms of fine shape and heavy substance are in perfect proportion to the strong, widely branched, four foot stems. Standards a fine glowing rosy purple, overlaid golden bronze; Falls are very rich deep claret purple, with an orange beard and suffusion of bronze at the haft. Both S. and F. seem shot with gold dust, which glints and sparkles in the sunshine. This great Iris must actually be seen in order to get any impression of its magnificent grandeur; no description could possibly do it justice.

Awarded the Dykes Memorial Medal for France for 1930. \$15.00

DESERT DAWN (Andrews 1931). 42". A glorious yellow and lavender blend, the gold of the center spreading almost to the tips of the standards and falls, which are pure lavender. Flowers of large size, firm substance, and splendid form, gracefully poised on erect and freely branched stalks. Much yellower than Candlelight, with less lavender, larger blooms, and without Candlelight's weak stalk. \$12.50

DESERT GOLD (Kirkland 1930). 35". See Intermediates. \$5.00

DOLLY MADISON (Wmson 1927) 91. 36". A beautiful blend of the Quaker Lady type, but far more delicately colored. A bloom of the largest size and perfect shape on tall strong stems. Dolly Madison is one of Williamson's greatest achievements, and one of the finest of all iris. \$.75

DON JUAN (Cayeux 1928). 40". A magnificent new iris of huge size and lovely coloring. S. light rosy lilac shaded bronze; F. bright red, paling at the margin, and heavily veined at the haft. A lovely effect of pink standards and glowing red falls. Enormous blooms of splendid shape and fine substance, and extraordinarily vigorous growth. **Special Prize offered by the Iris Commission of France, 1928.** \$2.00

DOROTHY DIETZ (Wmson 1929). 38". The most outstanding new Amoena. S. pale chicory blue, changing to white, F. rich pansy violet. A particularly pleasing color combination, with the largest flowers of any Amoena, on tall, well branched stems. Very popular. \$2.00

DR. CHOBOUT (Denis 1926). 36". A very pure deep flax blue of perfect flaring shape and firmest substance. Large flowers well placed on strong stems. One of the truest blues. \$5.00

ELIZABETH EGELBERG (Egelberg 1929). 48". A fine large mauve pink, with beautifully domed standards and broad flaring falls. S. mauve, flushed pink; F. lustrous mauve, shading to pink; a heavy orange beard lights up the center of the flower. Well branched and strong growing. \$1.00

EOTHEN (Wareham 1932). 36". A very large, well shaped bloom with broad petals, domed Standards and flaring Falls, with fine finish and heavy substance. A beautiful shade of soft, pale yellow overlaid buff, making a beautiful garden subject. An excellent Iris. \$12.50

EREBIAN (Loomis 1931). 40". A gorgeously beautiful very dark Iris that created a wave of comment when shown last year. A self of rich, dark, Bordeaux Red, with a brilliant, glowing gold beard in vivid contrast with the very dark velvety Falls. A flower with perfect form, fine finish, and heavy texture, on widely branched stems. In mass, a very rich, glowing color that is very striking and effective. \$10.00

EUPHONY (H. P. Sass 1929). 36". Another exquisite blend that baffles description. S. mustard yellow, stained brown at tips; F. mustard yellow, flushed with blue at center, and overlaid brown. The whole bloom is delightfully ruffled. Very floriferous. \$.75

FASCINATION (Cayeux 1927). 48". This is probably the best pink so far; tall, large, and a very beautiful shade of warm, brilliant pink. Its color is quite refined and beautiful as an individual bloom, and makes a brilliant and carrying mass of pink at a distance. Of excellent growth, Fascination is very popular and one we can highly recommend. \$2.50

GAY HUSSAR (Wmson 1929). 32". The most brilliant Variegata. S. lemon chrome; F. deep velvety ox-blood red. Very floriferous and a good grower, it makes one of the most vivid spots of color in the garden. \$.75

GILEAD (Andrews 1931). 42". A strikingly beautiful blend of golden yellow bronze and deep colonial buff, overlaid with a real amber shade; F. slightly deeper than S. Flower large and well proportioned, on strong well branched stems. A brand new color that was admired by every one. *Honorable Mention, A. I. S. 1932.* \$12.50

GOLDEN HELMET (J. Sass 1933). 35". "S. ochraceous tawny at the edge, yellow ochre at the mid-rib and buckthorn brown at the claw. F. Morocco red overlaid oxblood red, bronze haft striped Morocco red, prominent orange beard. Height 35 inches, stem low branched carrying 8 to 12 buds. A strikingly brilliant variegata that shines in any iris planting." *Introducer's description.* \$20.00

GOLDILOCKS (Wayman 1930). 36". A beautiful shade of uniform soft luminous yellow, with a lustrous silky sheen. Smooth blooms borne in abundance; a very pleasing soft yellow in mass, different from any of our other yellows. Fragrant. \$5.00

GRACE STURTEVANT (Bliss 1926) 87. 38". Dark brown-red and violet carmine. The flowers are exceptionally velvety, illumined by a vivid orange beard. A very brilliant and carrying color, that attracts instant notice. The most richly colored of Mr. Bliss' Dominion seedlings. \$2.50

GRAND MONARCH (Rowell 1929). 40". A rich bronze red self, illumined by a golden haft and orange beard. Very large blooms of good shape on strong stems; vigorous in growth. \$3.00

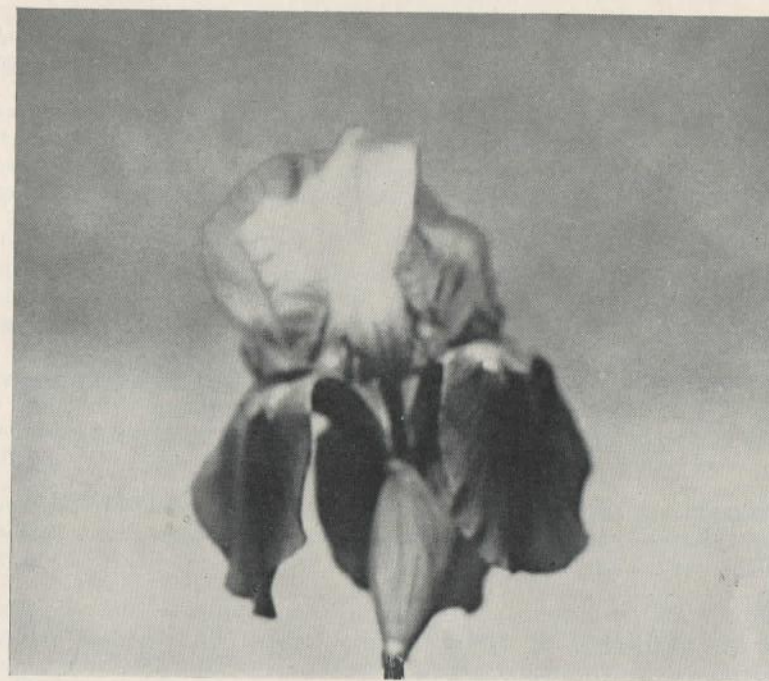
HELIOS (Cayeux 1929). 40". S. and F. pure lemon yellow, with pale olive reticulations on the haft of falls. A very large bloom of finest substance, smooth finish, and perfect form. Excellent. \$7.50

HERMITAGE (Kirk. 1931). 40". A deep rose red blend that is quite distinct from our other blends. A strong, vigorous plant with large flowers of good form, it is a most attractive and desirable Iris, and highly recommended. *H. M., A. I. S. 1930.* \$10.00

HONEYDROP (Morrison 1929). 36". A lovely new blend of honey and brown tones. S. lemon suffused pale brown; F. lemon yellow overlaid deep red brown, the whole bloom lightly flushed with old rose. An exquisitely beautiful blending of shades of honey, brown, and rose, that is absolutely unique. Large flowers, very floriferous, and a good grower. \$7.50

HYPNOS (Connell 1931). 36". A very fine blend of Steepway colors but far larger, brighter, and more subtle in coloring. A delicate blending of soft pleasing shades of blue, red, grey, and yellow. A very large, handsome Iris, quite different from Steepway in shape of bloom. \$1.00

INDIAN CHIEF (Ayres 1929). 40". One of the finest of all two toned reds. S. beautiful violet rose; F. deep rich glowing velvety red. A strong grower and free bloomer, with large well shaped flowers. A wonderfully fine color that is strikingly handsome in mass. \$2.50



Dauntless

IRMA POLLOCK (H. P. Sass 1931). 36". "In effect a much lighter toned Waconda and of equally fine quality. S. magenta, F. velvety carmine, with lighter margin. A flower of medium size and telling garden effect." *Introducer's description.* \$3.00

JACQUARD (Ayres 1927). 34". A fine dark red purple of remarkable carrying quality. S. dark vinous mauve; F. velvety dark violet purple. Has a fine red glow that makes it a very brilliant garden mass. \$4.00

KATHERINE McFARLAND (Spitzer 1926). 36". S. deep mulberry purple; F. rich velvety blackish purple shaded still darker; brilliant orange beard. One of our finest very dark Irises; a live, beautiful color, and one that we highly recommend. *A. M., A. I. S. 1926.* \$1.50

KING JUBA (H. P. Sass 1931). 36". A very fine new large flowered Variegata, with clear yellow standards, and brilliant velvety red falls. Much larger bloom and taller, stronger growth than the older Variegatas. \$5.00

KING MIDAS (Mead 1929). 34". An exceptionally beautiful Variegata of Lent A. Williamson parentage. S. golden buff, suffused garnet brown; F. very velvety rich garnet brown, edged golden buff. A heavy beard of

deepest orange and a golden haft illumine the center of the bloom. A flower of soft, beautiful colors, and fine size, substance, and finish. Very early and a good grower, qualities inherited from Lent A. \$4.00

KING TUT (H. P. Sass 1926). 34". Large flowers of an intensely brilliant red. S. light red, with a suffusion of orange brown; F. deeper red, also suffused light brown; haft and beard golden yellow. In mass effect a very attractive rich bright red. Fine and very popular. \$1.00

KLAMATH (Kleinsorge 1929). 42". An enormous bloom of perfect, flaring shape, and finest substance. A violet and purple bicolor, overlaid bronze; different from anything else. The whole plant is so massive in foliage, stalk, and flower that it immediately commands attention. \$3.50

LENZSCHNEE (Goos & K. 1927). 32". Means "Snow Crystal." A large bloom of distinctive shape and heavy substance of pure snow white with a halo of pale blue in the falls. A really beautiful bloom of pleasing color, and very popular. \$.75

LINDBERGH (Arb. 1928). 36". A good deep blue. Close to Blue Banner, but deeper, Falls more purple, and bloom of a different shape. One of the best of the deep blues. \$.75

LODESTAR (Hall 1925). 36". An exceedingly brilliant and very large flowered Variegata. S. brilliant chrome yellow; F. very dark velvety brown claret. The tallest and largest Variegata with the exception of the most recent introductions, and will hold its own with them. \$1.00

LOS ANGELES (M. M. 1927). 40". Almost a pure white, the base of the standards edge pale blue, and the style arms pale blue, with the haft of the falls veined red gold. An exceedingly beautiful bloom of largest size, perfect shape, and heavy substance, borne on tall, well branched stems. A giant Plicata, colored like Fairy. \$2.00

MARQUSETTE (Cayeux 1926). 40". A fine new break in color. Almost a self of pale shrimp pink shaded salmon; a very delicate and lovely new pastel color that is particularly pleasing. Tall and floriferous, and a strong hardy grower. \$1.00

MARY ELIZABETH (Kirk. 1929). 36". "A large, well formed flower of most attractive coloring. The various colors in the petals and style arm seem combined into one harmonious whole of rosy brilliance, with darker velvety falls. A flower of rare beauty and grace. Nothing in my garden is more beautiful." Int. description. \$7.00

MARY GEDDES (Stahl-Wash. 1931.) 40". A very beautiful Iris of new and unusual coloring. Almost a self of light ochraceous salmon, the Falls being overlaid with Pompeian red. Flowers of good substance on a tall, well branched stalk. Floriferous and a good grower, making a fine mass of unique color. *H. M., A. I. S. 1930.* \$12.50

MELCHIOR (Wallace 1927). 42". A magnificent Iris on the order of Mrs. Valerie West with deep bronzy violet standards and rich velvety crimson purple falls. Large and vigorous. \$3.00

MELDORIC (Ayres 1931). 42". A very handsome and impressive deep blue black Iris, with very large blooms of fine flaring shape. Combines the velvety richness of Dominion with the size and majesty of Mesopotamica; quite hardy. *H. M., A. I. S. 1931.* \$12.50

MORNING GLORY (Kirk. 1929). 36". An attractive red violet of very pleasing shade. Large blooms of heavy substance, floriferous, and a vigorous grower. Much bluer than Morning Splendor, with a much more finished bloom; they really should not be compared. Morning Glory stands as a fine Iris on its own merit. \$7.00

MOUNTAIN MIST (Andrews 1931). 40". A delicate pastel of pale mauve bronze, almost gray, which does not fade, but holds its life, even in strong sunlight. Very large flower of fine form on good stems; good grower and a nice color addition. \$5.00

MRS. VALERIE WEST (Bliss 1925) 91. 40". Considered Mr. Bliss' best Dominion seedling. S. lavender, shot with bronze; F. deep velvety crimson brown. Very large flowers of fine shape and substance on tall, well branched stems. A strong growing, very handsome iris. \$3.00

NENE (Cayeux 1928). 48". A gigantic bloom over nine inches in height, with petals of proportionate width, Nene is the largest of all Iris. Its color is pleasing, S. soft, clear lilac; F. vinous red, lighter at the margin. Splendid shape with such firm substance that it does not flop, in spite of its immense size. Very stout well branched stalks. \$3.00

NEPENTHE (Connell 1931). 36". A most delightfully subtle blend, Nepenthe is a self of soft pearly gray, with a faint rosy glow suffusing through it; all through the gray are glints and flashes and sparkles of gold; like the dawn's rosy glow and the sun's first golden rays diffused through a soft sea mist. Larger and better shaped blooms than either Aubade or Alcina, of fine substance and poise, its coloring is even more beautiful and intriguing than theirs, and we consider it the choicest of the three. *H. M., A. I. S. 1932.* \$6.50

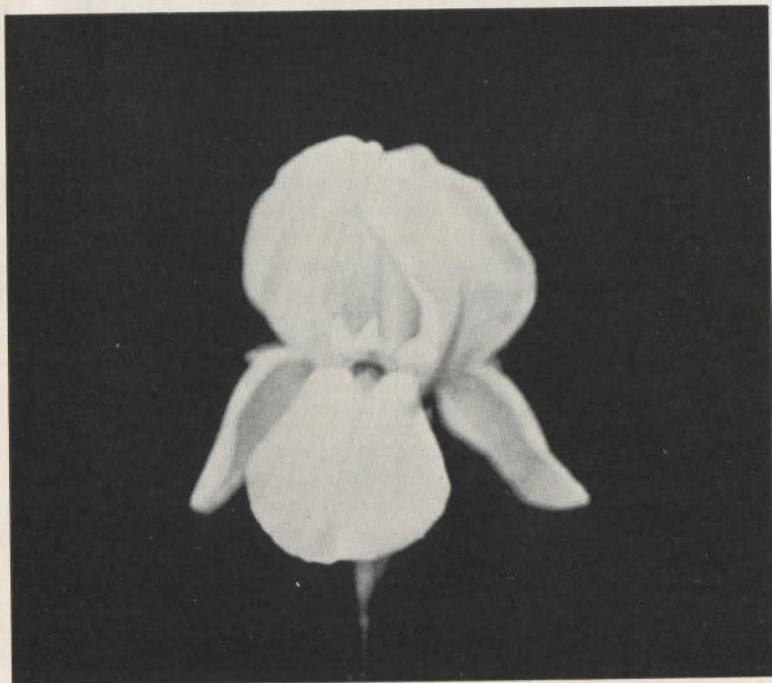
NINGAL (Ayres 1932). 46". A splendid blend with huge blooms of firmest substance. S. beautifully domed, of pure, bronzy buff; Falls smooth and flaring, of warm buff overlaid with iridescent, very pale coerulean blue, this blue being deepest at center of blade. \$17.50

NO-WE-TA (H. P. Sass 1932). 32". "A pinker Midgard type of entirely different form, and an iris of exquisite coloring. S. conic arched and frilled. It is a beautiful true pink self in effect, with yellow flushes at the center, and edges of falls and standards." Introducer's description. \$7.50

NUMA ROUMESTAN (Cayeux 1928). 36". A perfect self of an intense deep red. A gloriously dark rich velvety red bloom that is deeper and more uniform in color than Dauntless, although not as large. Both S. and F. are beautifully frilled; well branched and very floriferous. \$3.00



Pluie d'Or



Solitaire

NUSKU (Nesmith 1930). 36". A tall and stately old rose and yellow blend. Large flowers on a good stalk. Fine substance, and a beautiful blending of pastel colors. \$2.00

OKOBOGI (J. Sass 1932). 30". "A rich, very dark velvety red purple of great size and strikingly rich appearance. S. deep livid purple; F. velvety dark maroon purple." Introducer's description. \$1.00

OMAHA (H. P. Sass 1939). 30". Almost a pure red of a beautifully clear tone. S. dark vinaceous; F. vinaceous purple. Large blooms, floriferous, making a fine red mass in the garden. \$1.00

OPALINE (Wmson 1930). 36". A very lovely soft pink blend, flushed yellow. S. pale rose purple shading to yellow; F. pale rosolane purple shading to yellow at haft. This delicately beautiful blend is admired by all who see it. \$1.50

OREGON BEAUTY (Kleinsorge 1930). 38". A very beautiful and extra large flower on a strong stem. S. soft aconite violet; F. bright, velvety cotinga purple; heavy gold beard. Blooms of fine shape and heaviest substance, with broad segments. Very pleasing color. \$5.00

OREGON GIANT (Kleinsorge 1930). 42". Truly a giant in growth and size of bloom. S. soft reddish purple; F. very deep velvety blackish purple, illumined by a brilliant golden beard. Enormous flowers with broad, widely flaring falls, borne on strong, sturdy stems. \$3.50

PERSIA (Ayres 1929). 46". A fine blend of soft rich shades of blue and lavender. S. soft smoky blue; F. rich purple blue at center, shading to a paler tone at the margin, veined old gold on the haft. Large flowers in great abundance on a tall, very well branched stalk. In its soft, subdued, yet rich tones of blue it suggests the colors found in a fine Persian rug, hence its name. An excellent Iris. \$7.50

PINK SATIN (J. Sass 1930). 45". A clear light satiny pink that is a very pure color completely lacking the purplish tint of most pinks. A perfect self with a brilliant orange beard. The flower has such a rich lustre and glistening satiny sheen that its name describes it perfectly. Its stalk is tall and well branched, bearing many large beautifully shaped blooms. Like all Sass varieties, floriferous and a good grower. A fine new break in color that makes a wonderful mass. *Honorable Mention, A. I. S. 1931.* \$10.00

PIXIE (H. P. Sass 1929). 10". "An unusual departure, a dwarf plicata blend of Jubilee coloring flowering with the tall bearded irises. Branching stems 8 to 10 inches high. This little beauty has excited much admiration and we now have a good stock of it." Introducer's description. There is much need for late dwarfs. \$1.00

PLUIE D'OR (Cayeux 1928). 40". A pure, brilliant golden yellow self. A large bloom of good shape on tall, well branched stems. The color is pleasing, a clear, intense yellow that carries well, and the plant is perfectly hardy, a fast increaser, and very floriferous. The tallest and very best deep yellow. *Dykes Medal, 1928.* \$3.00

PURISSIMA (M.M. 1927) 95. 46". The largest and most beautiful white Iris now in commerce. A pure white of largest size, fine form, and heavy substance, borne on magnificently tall, well branched stems. Quite hardy here in New York State, if given perfect drainage. \$1.00

QUIVERA (J. Sass 1932). 30". One of the Sasses' finest blends; a mingling of buff, pink, yellow, orange and brown of unique beauty. S. buff pink; F. orange vinaceous, striped pink vinaceous, yellow glow at center, brown hafts and yellow beard. *Honorable Mention, A. I. S. 1931.* \$2.00

RAMESES (H. P. Sass 1929). 36". One of the finest new blends. S. russet vinaceous; F. tourmaline pink. The whole flower is suffused with a yellow glow at center. A magnificent pink and yellow blend. One of our most popular blends. **Dykes Medal, 1932.** \$5.00

RED DOMINION (Ayres 1931). 42". A strikingly handsome deep red self, that was universally acclaimed one of the most outstanding of 1931 introductions. S. clear lustrous deep red; F. are very broad and velvety, deep ox-blood red. Large blooms of heavy substance and fine shape, gracefully poised on well branched stalks. "One of the most fascinating characteristics of this new variety is the opening bud, which resembles the bud of a deep red rose, as it unfolds." *Honorable Mention, A. I. S. 1931.* \$15.00

ROB ROY (Kirk. 1931). 36". A fine red bicolor outstanding as a garden mass. S. Argyle Purple, F. Dahlia Carmine. Blooms with flaring falls and remarkable texture. Of rapid increase and strong growth, it is one of the finest of the red purples. \$7.50

ROSE DOMINION (Connell 1931). 34". A most distinct and beautiful Dominion seedling of an appealing old rose color. Very large blooms with horizontally flaring falls, well placed and without "toeing in," and the firm substance and velvety texture of Dominion. A bright golden beard contrasts with the soft old rose tones. Very outstanding and much admired by all. *H. M., A. I. S. 1932.* \$7.50

ROYAL BEAUTY (McKee 1931). 36". A wonderfully rich, deep blue purple with very velvety blooms of finest substance. This was a great favorite with all who saw it last year. Good, strong grower. *Award of Merit, A. I. S. 1932.* \$30.00

RUSTY GOLD (Andrews 1931). 40". Another fine new color. An orange bronze blend; like tarnished gold with a copper flush in the falls. A vivid coloring of intense carrying quality, which makes an arresting mass of color as it is a good grower and very floriferous. \$7.50

SACHEM (Loomis 1931). 38". A glorious bloom of richest red brown tones, firm substance and very velvety. A more brilliant and much larger King Tut. An exceedingly fine Iris. \$20.00

SACRAMENTO (M. M. Salb. 1930). 42". A giant Plicata with glorious white blooms heavily edged red purple in S. and reticulated same color in



Sir Michael

Falls; a fine orange beard lights up the flowers. Has the same huge blooms of fine shape and heavy substance as San Francisco, and same fine stalk. *H. M., A. I. S. 1931.* \$5.00

SAN FRANCISCO (M. M. 1927) 88. 46". One of the giant new Plicatas. Blooms of purest white distinctly edged with beautifully contrasting blue. San Francisco is one of the handsomest of all iris, with huge flowers of fine flaring shape and heavy substance, borne on tall stems that branch low and widely, like a candelabra. Plant on a slope to insure perfect drainage. This new plicata far transcends in size and beauty the older varieties of this class. **Dykes Medal, 1927.** \$1.50

SAN LUIS REY (Mitchell 1928). 38". Coloring very similar to Opera, but more bronzed. Taller and very much larger. Excellent. \$.75

SELENE (Connell 1931). 40". A tall beautiful white of very large size and heavy substance, perfectly hardy, as it has no tender blood, and vigorous and floriferous. It is not a cold white, but a warm, luminous, glistening white,

which suggested to Mr. Connell the name of the Moon Goddess. *H. M., A. I. S. 1932.* \$7.50

SENSATION (Cayeux 1925). 40". A clear, crisp cornflower blue of large size and good substance, with horizontal falls. Well branched. One of the finest clear brilliant blues we have. \$1.50

SIR MICHAEL (Yeld 1925) 90. 48". This is one of the handsomest and most gorgeous of all Iris. S. clear brilliant lavender blue; F. deep, rich, velvety blue purple, with a fine red brown glow at the haft. Beard is brilliant red gold. A splendid grower, with exceedingly strong, widely branched stems. Strikingly prominent in the garden because of its height and carrying color. This magnificent iris is universally acclaimed to be one of the world's very best. \$2.00

SPOKAN (J. Sass 1933). 36". "S. sayal-brown overlaid reddish brown. F. ox-blood red, overlaid blackish brown. Haft yellow with brown stripes. Prominent orange beard. The most brilliant of the red brown blends which attracted the admiration and attention of all visitors last year. The blooms are carried on 36-inch well branched stems." Introducee's description. \$20.00

SUMMER CLOUD (Kirk. 1930). 36". "The standards first appear as pale blue, but change rapidly to a soft blue white, just the color of a cloud in the summer sky. The falls are blue, as the sky itself. The flower is large and well formed; plant growth is vigorous." Int. desc. \$7.50

SURPRISE (Cooley 1928). 48". Soft heliotrope, with a fiery orange beard. A very large, finely shaped flower on four foot stalks, Surprise is one of the most beautiful of all this class. \$.75

THEODOLINDA (Ayres 1932). 42". A Plicata of San Francisco size, vigorous and of positive hardiness, described as a greatly glorified Rose Salterne. Broad, domed, pure white Standards with button hole stitching of light blue along the edge; Falls broad and straight hanging, deep violet markings at center, changing to clear blue at edge. Fine substance. \$17.50

TUSCANY GOLD (Wmson 1929). 34". A very fine reddish gold blend. A large flower and a beautiful color that appeals to every one. \$2.00

VENUS DE MILO (Ayres 1931). 44". A fine large, pure white Dominion seedling on tall stems. Flowers of fine shape and very firm substance, and a pure, creamy white, with yellow beard. Strong grower and fast increaser, and perfectly hardy. *Honorable Mention, A. I. S. 1932.* \$7.50

VERT GALANT (Cayeux 1929). 50". An enormous flower of rich coloring, heavy substance, and fine form on well branched four foot stalks. S. coppery fawn suffused lilac; F. vivid garnet red, edged bronze; haft brown, bright yellow beard. *Dykes Medal, 1929.* \$15.00

VIOLET CROWN (Kirk. 1931). 40". A very large flower of unusual and most attractive light violet tone. Falls very slightly deeper than S.; really a self color. Shape, poise, and substance of the bloom are nearly perfect, and it is a strong grower. Named after classic Athens, the "City of the Violet Crown." \$7.50

WACONDA (H. P. Sass 1930). 36". S. deep fuschia red; F. rich velvety violet carmine. A very large flower of a brilliant fuschia red effect, on tall well branched stems. A good grower, and a very fine Iris. *Honorable Mention, A. I. S. 1931.* \$2.00

WAMBLISKA (Jacob Sass 1930). 45". A gorgeous new white of huge size and heavy texture, one is at once impressed with the appropriateness of its name, which means "White Eagle" in the Indian tongue. The immense, finely shaped flowers are gracefully poised on tall, widely branched, four foot stalks. The bloom is pure white with broad, well shaped segments. A strong heliotrope flush at the base of the S. makes it a cool white, rather than a warm white like Purissima. This is hailed as the greatest white in existence, with size and height fully comparable to the best of the semi-tender varieties, and absolutely hardy. *H. M., A. I. S. 1931.* \$5.00

WILLIAM R. DYKES (Mrs. Dykes 1926). 40". This is the late W. R. Dykes' greatest masterpiece. It has flowers of the largest size, with long broad petals of thick, heavy substance that are beautifully creped and crinkled. It is a fine rich golden yellow in color, the finely domed and frilled standards clear yellow, the falls lightly flaked with violet, and the beard a brilliant orange. This magnificent yellow is of a size hitherto undreamed of in yellow Irises, and is one of the greatest advances in Iris breeding. Although at first thought to be tender, it is perfectly hardy in our below zero weather if planted in well drained sandy soil on a slope where water will not freeze around it. \$15.00

WINNESHIEK (Egel. 1931). 42". An excellent dark Iris, similar to Black-amoor but darker and bluer. Large blooms and one of the best deep blue-blacks we have seen. Recommended. \$3.50

YVES LASSAILLY (Cayeux 1928). 48". Standards white; Falls white, flushed with blue, veined at throat with chestnut and gold. Very large blooms on fine tall stems, making a particularly beautiful effect. Early blooming and a very fine Iris. *C. M., S. N. H. F., 1928.* \$7.50

ZAHAROON (Mrs. Dykes 1927). 42". A blend as indescribable as a gorgeous lavender sunset, or the exquisite and ever changing colors of the Aurora Borealis. An opalescent blending of amber, fawn, and pale violet. the standards faintly flushed pale green, the whole bloom strongly suffused light rose. The entire flower has a sparkling iridescence that gives it the intangibly delicate coloring of the rainbow. Without a doubt one of the loveliest and most beautiful of all Iris. A large, well shaped flower, and a strong, vigorous plant. *Silver Gilt Medal, English Iris Show, 1927, as the best seedling shown that year.* \$12.50

Standard Varieties

This is a select list of the best of the older varieties which have become standard and low in price. They have proven their worth and their right in the garden over the years; many of them are absolutely unique and will probably never be replaced; others can be duplicated only in the higher priced novelties, which are often of tender growth, whereas these standard varieties are floriferous and strong growing.

The name of the Iris is followed in parentheses by the name of the originator and date of introduction. The first figures after that are the percentage ratings for garden value of the American Iris Society; the second figures give the average height of stalk in inches. "S" denotes the Standards or upper petals; "F", the Falls or lower petals.

Note: You may have 3 roots of any .25 Iris for \$.60
 3 roots of any .35 Iris for .85
 3 roots of any .50 Iris for 1.25
 3 roots of any .75 Iris for 1.85
 3 roots of any \$1.00 Iris for 2.50

AFTERGLOW (Sturt. 1917) 82. 38". Pink lavender blend, lit with yellow at center. Large and tall, fine in mass, and very popular. \$.25

ALABASTER (Andrews 1926). 32". Pure white flower of exceptionally fine form. Received first prize for white at Cleveland Show, 1927. \$.25

ALCAZAR (Vilm. 1910) 87. 42". Well branched blue purple bicolor. It and L. A. Williamson are the first tall large Irises to bloom, and should be in every collection. Both are strong growers and sure bloomers. \$.25

ALIQUIPPA (Hall 1924) 88. 34". Soft yellow with deeper, luminous center. A very large bloom on a strong stem; plant of strong growth. Awarded the A. I. S. Silver Medal in 1926. \$.50

ALLIES (Vilmorin 1925) 84. 30". S. deep reddish violet, tinged copper; F. deep purplish red, with red bronze markings on haft. Similar to Copper-smith, but much richer coloring. Very beautiful, and often blooms in late summer and autumn. \$.25

AMBASSADEUR (Vilm. 1920) 91. 45". S. bronze lavender, F. deep crimson velvet. The most popular standard variety, and one of the world's best Irises, as it is a fine grower and very beautiful. \$.25

AMBER (Dykes 1924) 88. 30". Soft yellow, similar to Shekinah, but larger and deeper in color. One of the best standard yellows. \$.25

AMERIND (Andrews 1926). 46". S. Golden coppery bronze; F. coppery bronze; yellow beard. Almost a self of very rich bronze lavender; tall and well-branched; vigorous and free blooming. An unusual color. \$.35

ANNA FARR (Farr 1913) 77. 36". White, delicately margined pale blue. Has the most beautiful flower of the hardy white plicatas, with a shape and form unequalled by any other. \$.25

APACHE (Farr 1926) 87. 30". S. and F. distinct coppery red. General effect is brilliant light red, a very beautiful color not found in any other Iris. Absolutely distinct and very fine. \$.25

APHRODITE (Dykes 1922) 88. 48". Both S. and F. are clear bright violet pink, the falls having a white flush at the haft. Perfect form and finish of bloom, still one of the finest of "pink" irises. \$.25

ARGENTINA (Mohr 1923). 45". A very large tall pure white, of Caterina shape of bloom and branching. Should be given a well drained slope of sandy soil. Bright orange beard. Very beautiful. \$.25

ARGYNNIS (Wmson 1925) 83. 40". S. yellow, F. dark violet carmine. A very tall and distinct variegata. **A. M., A. I. S.** \$.25

ARLETTE (Cayeux 1925). 30". S. cream; F. cream, with beard and central area bright yellow. Finely shaped bloom of good substance and satiny texture. So delightfully pretty that every one who sees it wants it. \$.25

ASIA (Yeld 1920) 88. 50". Thought by many to be the grandest Iris in existence. There is no other Iris that approaches its beauty of bloom and majesty of bearing. S. pale silvery lavender, yellow at base. F. pale violet purple, lighter at edge. The flowers are very large, and gracefully borne on perfectly branched stalks over four feet high. Asia will always be one of the world's best iris. \$.25

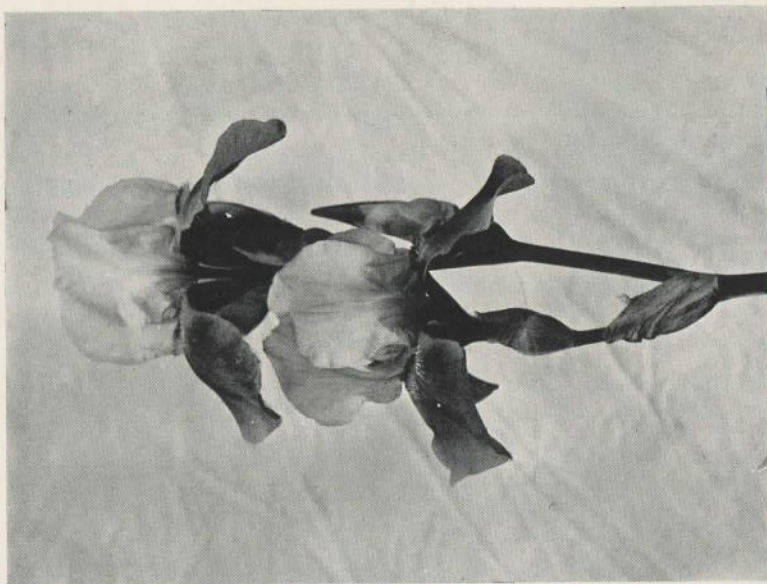
AVATAR (Wmson 1927). 36". S. heliotrope grey, shading to yellow at base. F. pansy violet, beard orange. Suffused with a yellow glow as though lighted from within. A large handsome iris. \$.25

BALLERINE (Vilm. 1920) 89. 48". S. pale beautiful blue lavender, broad and waved at the margins; F. a little deeper, and very broad. Blooms of the largest size, that have a delightfully distinctive carriage, and are borne on four foot stalks. A splendid grower and free bloomer, and another Iris that will never be superseded. \$.25

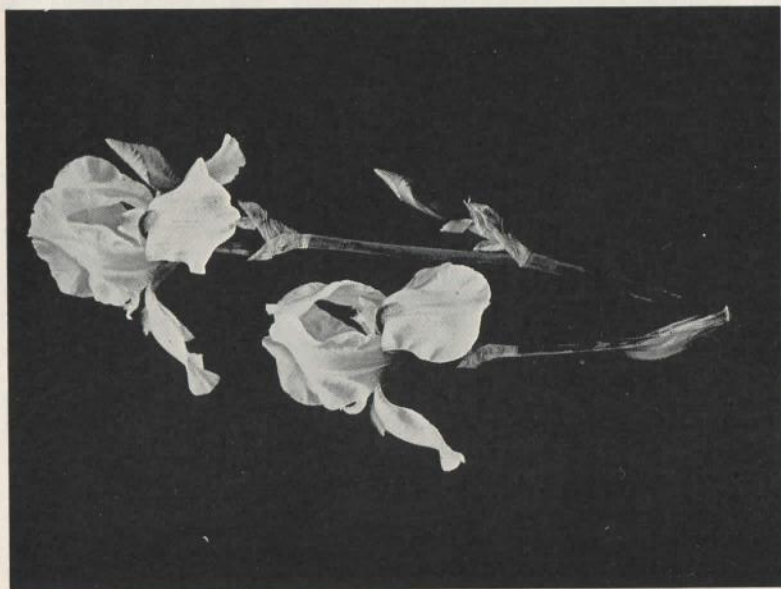
BLACK PRINCE (Perry 1900) 72. 24". S. intense blue, F. deep rich velvety indigo purple, with a brilliant orange beard. Slow grower, but a wonderful gem of the iris world. \$.35

BRUNO (Bliss 1922) 90. 36". S. bronze lavender, F. deep rich red purple, very velvety. A Dominion seedling that has very large flowers borne by a plant of very robust growth. Next to Cardinal this is the most popular of all Dominion seedlings, and well deserves to be. \$.75

BUTO (H. P. Sass 1926). 30". A very large and stunning dark blue purple, one of the earliest Tall Bearded. S. royal purple; F. very dark velvety black violet. Well branched and free blooming. \$.75



Cardinal



Gleam

B. Y. MORRISON (Sturt. 1918) 80. 36". S. pale lavender violet; F. velvety violet purple, with wide pale lavender border. A very distinct Iris, being a color combination that instantly attracts attention. \$.25

CANDLELIGHT (Andrews 1926) 91. 46". At present the most highly rated Iris. A beautiful pale pinkish lavender blend, the entire heart of the bloom lighted with gold, which blends into the lavender of the petals. One of the most delicately colored of all irises, with large blooms on four foot stems. It is very popular. \$.50

CARDINAL (Bliss 1919) 90. 38". S. lavender, overlaid rose, F. very velvety rich prune purple, large and circular. A bloom of perfect shape and substance. Plant strong and vigorous. The most popular Dominion seedling, Cardinal is an iris every one likes. \$.50

C. E. STRINGER (J. Sass 1924) 83. 33". A self color of the palest, most delicate rose, this iris has a delicate beauty that instantly appeals to all who like light colors. A new color unlike any older iris. \$.35

CHALICE (Sturt. 1924) 82. 35". A very clear soft yellow, one of the largest, tallest, and best medium yellows. Very fast grower. \$.25

CHARTIER (Hall 1925) 89. 32". A clear beautiful white with large flower of smooth, broad segments. Chartier, White and Gold, and Snow White are the three best hardy whites. Given the A. I. S. Silver Medal. \$.35

CHASSEUR (Vilm. 1923) 85. 36". A very fine, large flowered late yellow. One of the best and tallest yellows. \$.35

CINNABAR (Wmson 1928). 46". One of the finest deep purple bicolors. The flowers are very velvety, and the clump makes one of the most outstanding masses of deep red purple in the garden. \$.50

CITRONELLA (Bliss 1922) 85. 36". A clear, soft yellow, with the falls washed chestnut. This iris is so different from any other, and the color combination so delightful, that it is very popular. \$.25

CLARIDAD (Mohr 1926) 86. 36". An exceptionally beautiful pale sky blue; one of the truest blues we have, it makes a beautiful mass. \$.25

COPPERSMITH (Shull 1926). 45". A beautiful, glowing coppery red, that instantly catches the eye. A flower of fine substance and form, the plant is a strong hardy grower, that will do well anywhere. \$.50

CORONATION (Moore 1927). 42". The most brilliant, clear deep golden yellow that we have. A tone quite different from Gold Imperial and Prairie Gold, Coronation is taller and larger. Very popular. \$.50

CRUSADER (Foster 1913) 85. 45". A most brilliant "Crusader" blue. A fine large flower on tall well branched stems. Such a pure intense blue that it is very striking. Absolutely unique, and very popular. \$.25

- DOMINION** (Bliss 1917) 82. 30". The world's most famous Iris. S. bluish violet, F. deep indigo purple, very broad and circular, of deepest velvet. None of its seedlings has yet exceeded Dominion in velvetiness. A slow but strong grower, with a flower of arresting beauty. \$.75
- DREAM** (Sturt. 1918) 84. 36". A delightful shade of pure lilac pink. One of the most lovely and beautiful pink Pallidas. \$.25
- DUKE OF BEDFORD** (Bliss 1922) 87. 38". A very fine Dominion seedling with S. deep violet; F. deeper, blackish violet. Velvety. \$.25
- EDOUARD MICHEL** (Verdier 1904) 81. 36". Very brilliant deep petunia violet. Large bloom with frilled petals. Very beautiful and distinct. \$.25
- ELSINORE** (Hall 1925). 34" One of those indescribable blends that is delightfully different from all other iris. Pale primrose yellow blooms pleasingly edged and shaded with violet-erimson. \$1.00
- ESPLENDIDO** (Mohr 1924) 86. 40". Very large blooms of rich red purple on tall, well branched stalks. Very popular. \$.25
- FAIRY** (Kennicott 1905) 78. 36". White, narrowly margined pale blue. A pretty Plicata and one of the most sweetly scented of all Iris. \$.25
- FRA ANGELICO** (Vilm. 1926). 32". A beautiful blend, with the colorings of a fine blue and gold sunset. The flowers are brilliant gold, flushed bright blue; a very lovely and attractive color combination. \$.25
- FRIEDA MOHR** (M. M. 1926) 85. 45". A beautiful shade of violet pink, that appeals to all. A bloom of huge size and perfect shape and substance, borne by a hardy, strong growing plant. A very popular pink. \$.50
- GEORGE TRIBOLET** (Wmson 1926) 88. 40". A very fine, velvety, blackish red-purple bicolor. Makes a dark, rich mass. \$.25
- GEORGE YELD** (Perry 1923) 85. 40". S. apricot, shaded rose; F. rose crimson, edged buff. Gives the effect of a bicolor. Unusual color. \$.25
- GEORGIA** (Farr 1920) 83. 30". Uniform soft Cattleya rose. One of the best "Pinks." Very floriferous, and very early blooming, being really a late Intermediate. Highly recommended, as there are no Int. pinks. \$.25
- GERMAINE PERTHUIS** (Millet 1924) 90. 40". S. bronzy violet purple; F. deep rich Bishop's violet. Tall, large flowered, a fine grower, it stands out as the best of bronze purples. Very fragrant. A truly grand iris that is becoming ever more popular. \$.25
- GLORIAE** (Cayeux 1924) 78. 40". Almost a bright blue self, that is very effective in the garden. One of Cayeux' best introductions. \$.50
- GOLDEN GLORY** (Jackson 1927). 38". Tall large flowered light yellow. Very floriferous, wonderfully well branched, and a fine, strong grower. One of our finest light to medium yellows. Very popular. \$.35

- GOLD IMPERIAL** (Sturt. 1924) 87. 33". The deepest, most brilliant clear yellow. A particularly pleasing color, and very floriferous. Bloom of perfect form and substance. The most popular yellow. \$.25
- HARRIET PRESBY** (Presby 1922) 83. 45". S. rose lilac; F. darker rose lilac with an orange beard. The largest and tallest of the Susan Bliss type of pink, with four foot stems and strong growth. Very popular. \$.25
- HIGHLIGHT** (Nesmith 1928). 35". A soft clear yellow, of medium size and height, smooth finish, well branched, and floriferous. \$.50
- HORIZON** (Mor. 1925). 32". Uniform, very clear light horizon blue; one of the clearest and best light blues. Fine for massing. \$1.00
- IMPERATOR** (Cayeux 1923) 84. 38". Tall, strong growing light red. Makes a beautiful garden effect, and is very popular. \$.25
- ISOLINE** (Vilm. 1904) 84. 36". An indescribable blend of greatest beauty. S. silvery rose, flushed yellow; F. purplish old rose, shot and veined with gold, the entire bloom overlaid with a sparkling iridescence. Lovely old rose in mass. Isoline is absolutely unique and will never be replaced. If introduced today it would be a sensational \$50.00 wonder. \$.25
- JANE WILLIAMSON** (Wmson 1928). 36". An iridescent pastel pink. One of those bewitchingly beautiful blends that every one likes. \$.50
- JUBILEE** (J. Sass 1923) 84. 26". A lovely plicata of buff spotted with copper, that gives a luscious peach color in mass. Very floriferous. These plicatas of Sass' are delightfully different and very popular. \$.25
- JULIA MARLOWE** (Shull 1924). 42". A very large, tall, well branched pinkish red bicolor. Rich velvety blooms making a fine mass of bright color. Strong growing, and recommended. \$.25
- KASHMIR WHITE** (Foster 1913) 81. 46". A very tall white with large, handsome flowers of heavy substance. One of the finest large whites. Floriferous and a good grower in sandy soil. \$.25
- KING KARL** (J. Sass 1925) 83. 30". A delightful plicata, dotted and dusted with pink on a cream ground, giving a very pretty effect. \$.25
- LABOR** (Cayeux 1926) 87. 36". An absolutely new color. An exceedingly striking mass of dark violet heliotrope, suffused copper. A beautiful, brilliantly metallic color that instantly catches the eye. \$.35
- L'AIGLON** (Shull 1926). 45". A tall large very handsome deep bronzy blue violet. Much bluer than the bronze Sequoiah or the coppery red Copper-smith. Very dark and a fine Iris. \$.50
- L. A. WILLIAMSON** (Wmson 1918) 88. 42". The world's strongest growing Iris. S. lavender violet, suffused yellow; F. velvety pansy violet, with golden beard. The first tall large Iris to bloom. Highly recommended. \$.25

LE CORREGE (Vilm. 1927). 38". S. smoky bronze, suffused red; F. bright velvety red. Richer and redder than Ambassadeur, its parent. \$.75

LEVERRIER (Denis 1917) 82. 48". General effect is light rose red. Very large bloom on four foot stalks. Magnificent, and unique. \$.25

LONA (J. Sass 1923) 83. 30". Buff, dusted and peppered purple, which in mass gives a most delightful light pink. A beautiful plicata. \$.25

LORD LAMBORNE (Perry 1923) 85. 42". S. bronzy rose fawn; F. rich madder crimson. A very brilliant fawn and crimson mass. Very floriferous. A most unusual and popular color. \$.25

LORD OF JUNE (Yeld 1911) 78. 42". S. chicory blue; F. lavender violet. A very large, handsome bloom; one of the most popular of all Iris. Delightfully fragrant. \$.25

LUSTRE (Dykes 1925). 36". A very early large flowered pure red violet of lustrous tone. \$.25

MAGNIFICA (Vilm. 1920) 85. 48". S. light lavender blue; F. purple violet. Very handsome, and quite distinct from any other. Very popular. \$.25

MAORI PRINCESS (Shull 1923) 81. 30". A very brilliant and richly colored Variegata. S. empire yellow; F. burnt lake, heavily bordered empire yellow. Like Maori King but larger, taller, and more brilliant. A very floriferous Iris that is highly recommended. \$.35

MARY BARNETT (Cumbler 1926) 90. 40". Light lavender blue with a brilliant orange beard. Large, pretty flower of Princess Beatrice type. One of the most popular light blues. \$.25

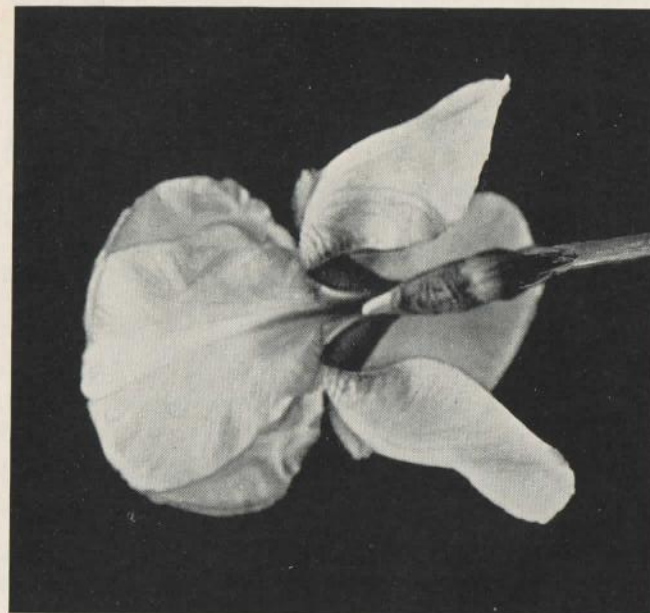
MARY GIBSON (Perry 1923) 85. 42". Light bronze overlaid old rose. Soft, beautiful color in mass. Very floriferous. \$.25

MEDRANO (Vilm. 1920) 87. 30". Very deep smoky wine red; has a delicious wild grape scent. Grows and blooms well, and is very popular. \$.25

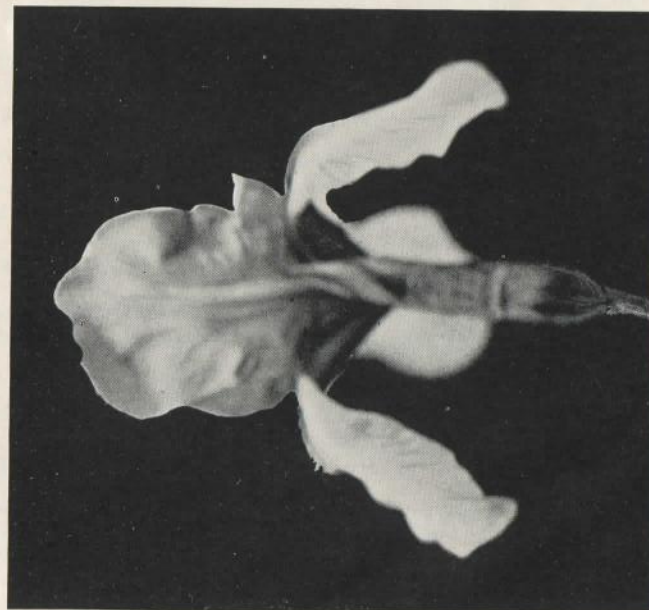
MESTOR (Perry 1923). 38". S. bright violet blue; F. richest velvety pansy violet. Vigorous and free flowering. \$.25

MICHELINE CHARRAIRE (Denis 1924) 87. 40". Very large, tall milk white. Yellow haft. One of the purest, most beautiful large whites. This and Theseus are the best of this type of white. \$.50

MIDGARD (H. P. Sass 1926). 36". A blend so exquisitely beautiful that it is indescribable! S. and F. yellow, overlaid peach pink, with silvery, iridescent, mother of pearl tints. Every one stops to admire its delicate, opalescent beauty. From a distance it is a lovely soft glowing pink, purer and more pleasing than any of our pink selfs. Blooms delightfully ruffled, and produced in great abundance. A strong, fast grower, and perfectly hardy. Midgard is one of the most popular of all Irises, and is universally admired. \$.50



Los Angeles



Elsinore

MILDRED PRESBY (Farr 1923) 87. 30". The clearest and best Amoena. S. clear white; F. rich, dark, velvety pansy violet, with a narrow edge of lavender white. A very lovely iris that is very prominent in the garden because of the contrast of white standards and dark falls. \$.25

MLLE. SCHWARTZ (Denis 1916) 84. 48". Very large pale mauve self of perfect form and clear color. Exceptionally fine and greatly admired. \$.25

MME. CECILE BOUSCANT (Millet 1923) 88. 40". A charmingly soft shade of orchid pink that is particularly lovely in mass. Bloom of fine form and substance, borne on tall, well branched stems. A very beautiful and greatly admired iris. \$.50

MME. CHEREAU (Lemon 1844) 70. 45". White deeply frilled blue at edges. A fine old Plicata with blooms of a distinctive shape all its own. The new Californian Plicatas have nothing on Mme. Chereau in height—we have grown it with many stalks fifty-one inches tall. Recommended. Always very popular. \$.25

MME. DURRAND (Denis 1912) 89. 45". An exquisitely beautiful blend that is absolutely unique among irises, and defies accurate description. S. iridescent buff; F. old gold, flushed lilac and amber. Very large blooms on a tall, very well branched stalk. This Iris, like Asia, will probably never be replaced, and is very popular. \$.35

MME. GAUDICHAU (Millet 1914) 88. 42". S. deepest blue violet; F. velvety blackish blue purple. Large, handsome deep blue black. \$.25

MME. HENRI CAYEUX (Cayeux 1924) 85. 40". S. smoky red violet; F. deep velvety blackish purple. In mass a beautiful deep, smoky red violet that is a different note from any other. \$.35

MOA (Bliss 1920) 87. 40". The tallest and one of the best of Mr. Bliss' Dominion seedlings. Blooms very large and broad petaled. S. pure, deep violet; F. deep violet purple, very velvety, and almost circular. Moa pleasantly lacks the stiffness of carriage most Dominion seedlings, combining Dominion velviness with gracefully drooping falls. \$.50

MONSIGNOR (Vilm. 1907) 77. 30". S. pale violet; F. pale violet, overlaid velvety purple at center. A distinct deep blue note in mass. \$.25

MONTOUR (Hall 1925). 28". One of those delightful color combinations that is a perfect "Gem". Every one who sees it says "I must have that!" S. cinnamon pink; F. deep, velvety burnt lake, solidly colored to the edge. An exquisite effect in pink and brown. Very distinct. \$.50

MOONLIGHT (Dykes 1923) 84. 36". Large, early white flushed palest amber and lavender, overlaid with an iridescent sheen. Very popular. Its name exactly depicts its delightful coloring. \$.35

MORNING SPLENDOR (Shull 1922) 91. 40". One of the finest large, tall velvety reds. One of America's most greatly admired irises. \$.25

MOTHER OF PEARL (Sturt. 1917) 84. 45". A tall beautiful lavender, with all the soft iridescent tints of mother of pearl. Very fine. \$.25

MOUNT ROYAL (Morgan 1924). 40" S. light blue; F. dark blue purple. Very large flowers, and noted for its delicious fragrance. \$.50

MRS. MARION CRAN (Perry 1923). 48". A very tall deep pink similar in color to Susan Bliss. \$.50

MRS. PERRY (Perry 1924) 85. 45". A large, tall white of good growth. Very floriferous, and makes a fine mass in the garden. \$.25

MRS. ROBERT EMMETT (Perry 1925) 71. 36". A beautiful white distinctly different from any other. The blooms are very large, with wide, smooth segments that are purest milk white, illumined by a bright yellow beard. Distinctively shaped bloom, well branched, and a fine grower. \$.35

NANETTE (Millet 1927). 36". An unusual Dominion seedling of variegata coloring. S. golden bronze, shaded green; F. plum purple, narrowly bordered yellow, and very velvety. An absolutely unique color combination that is very beautiful and unusual. Large flowers of good shape and substance on tall stems. \$.50

NAOMI (Sturt. 1928). 36". A very pretty pink and carmine bicolor in effect, covered with bloom. \$.50

NEBRASKA (H. P. Sass 1927). 36". Deep golden yellow with some chestnut stripes on the falls. In mass the chestnut veining deepens the tone until it is almost an orange. The deepest, most brilliant yellow. \$.35

OCHRACEA (Denis 1919) 82. 40". A lovely blend of pastel shades. S. old gold; F. old gold, with central suffusion of lavender. Unique in color, it grows and blooms well, and is one of our latest Irises, making a splendid mass of bloom after all else is gone. Indispensable. \$.25

ODAROLOC (Andrews 1924) 82. 45". A light, true mauve, slightly suffused pink, with a fine orange beard. An even self color with well shaped blooms of fine substance. Distinct and a very fine Iris. \$.25

OLIVE MURRELL (Perry 1924). 40". An improved Quaker Lady. S. deep lavender rose, shot bronze; F. rich lavender blue flushed rose and bronze. Fragrant and very pretty. \$.50

OPERA (Vilm. 1916) 83. 32". S. and F. bright rose purple. The most popular of all "red" Irises. Covered with bloom, and highly recommended. \$.25

OPHELIA (Cayeux 1925) 87. 30". A large flowered blend of golden copper and lavender. Similar to some of Sass' blends, but not ruffled. Very beautiful, and recommended. \$.35

PEAU ROUGE (Cayeux 1932) 82. 32". Very brilliant deep red. A fast grower and very floriferous. The most popular standard red. \$.25

- PEERLESS** (Dykes 1924) 89. 32". A huge bloom of rich glowing red purple. Heavy bronze reticulations at the haft and a bright gold beard light up the whole flower. One of Dykes' greatest originations. \$.50
- PIONEER** (Bliss 1924) 90. 36". An excellent deep red purple self. The color is very dark and striking, making it a very handsome iris. \$.25
- PRAIRIE GOLD** (H. P. Sass 1926) 84. 34". A clear, deep golden yellow self, without any veining. The deepest standard golden yellow iris we have. A tone quite different from Gold Imperial, which is a more lemon yellow. Very popular and highly recommended. \$.25
- PRIMROSE** (Sturt. 1923) 88. 33". A large flowered medium yellow, of clear beautiful tone. The best of its class, and a fine, fast grower. \$.25
- PRINCESS BEATRICE** (Barr 1597) 90. 45". S. silvery lavender, domed; F. a little darker, very broad and flaring. Large blooms of ideal shape and fine substance on tall strong stalks. Very beautiful wide, glaucous foliage. This is the Princess Beatrice listed by Colonel J. C. Nicholls, which, in comparison rows, proved to be the best of the P. B.'s obtained from many sources. It was taller, larger, a better grower, and much more floriferous than any other. For years this was rated the world's most beautiful Iris; Princess Beatrice will never be replaced. \$.50
- PRINCESS BEATRICE NO. 2** (Barr 1597) 90. 40". Another variation of Princess Beatrice purchased from Movilla Gardens, officially certified to be the "True" Princess Beatrice. A shorter stem, a little larger bloom of a pinker lavender, the same beautiful foliage, but not as floriferous. Both are exceedingly beautiful, and highly recommended. \$.50
- PROSPER LAUGIER** (Verdier 1914) 84. 36". One of our most beautiful brown-toned Irises. S. bronze flushed pink; F. velvety brown purple. Floriferous and very popular. \$.25
- PROSPERO** (Yeld 1920) 82. 48". S. lavender, suffused yellow; F. deep red purple. Tall, widely branched stems. Very handsome. \$.25
- PURPLE HAZE** (H. P. Sass 1927). 32". A delightful French gray self. Large silky blooms in great profusion. A lovely soft new color. \$.35
- QUAKER LADY** (Farr 1909) 75. 36". S. lavender, shaded buff; F. blue, washed old gold. A fine blend that is a beautiful soft tan color in mass. One of our most beautiful and popular blends. \$.25
- QUEEN CATERINA** (Sturt. 1918) 88. 42". A large pale lavender self, with a sparkling iridescent sheen. One of our most beautiful and popular Irises. A free bloomer and splendid grower; no other Iris just like it. Highly recommended. \$.25
- REALM** (Baker 1920). 40". A very pure, intensely blue self. A large finely formed flower of heavy substance, with a bright gold beard. \$.50
- RENE CAYEUX** (Cayeux 1924) 80. 36". S. white, slightly shaded lilac; F. crimson violet. General effect is white and crimson. One of the most lovely Amoenas we have, and very floriferous. \$.35

- RHEA** (Wmson 1928). 42". An excellent mauve and gold blend. A seedling of Isoline, but larger, taller, not so pink, and a better grower. One of Mr. Williamson's best Irises. \$.35
- RIALGAR** (Sturt. 1924) 82. 30". S. very brilliant yellow; F. light chestnut red. Gives almost an orange effect in mass. \$.25
- RICHARD II** (Dykes 1914) 73. 24". Closer to a black and white effect than any other Amoena. S. pure beautiful white; F. very velvety deep violet, distinctly margined pure white. Perfectly hardy, but a weak grower that must have careful cultivation. One of those delightful Iris gems that, like Black Prince, needs extra care but well repays it. \$.50
- R. W. WALLACE** (Perry 1923) 83. 42". A tall, very rich deep black purple Pallida. The darkest Pallida, and a very good grower. One of our finest dark irises, and very popular. Fine fragrance. \$.25
- SALONIQUE** (Cayeux 1923) 78. 30". S. cream white; F. bright purple. A very nice Amoena that every one likes, which is very floriferous. \$.25
- SANTA BARBARA** (M. M. 1925) 89. 46". A fine clear tone of lavender blue. Large blooms of heavy substance with horizontal falls. Very fine. Tall and well-branched. Very popular. \$.35
- SEMINOLE** (Farr 1920) 83. 30". A rich dark rose red, shaded violet. Lighter and redder than Opera, it makes a beautiful rose red mass. A very pleasing color, that we highly recommend. \$.25
- SEQUIOIAH** (Shull 1926) 86. 42". S. reddish violet buff; F. deep red velvet. It can easily be seen how the deep, rich bronze red color, and the strong, massive growth suggested the name "Sequoiah." \$.50
- SHASTA** (M. M. 1927) 83. 42". This and Mrs. Robert Emmett are the most easily grown large whites for our climate. A splendid clear snow white with large blooms of individual shape. Very floriferous. \$.50
- SNOW WHITE** (Sturt. 1926) 87. 36". Pure snow white with the largest blooms of any hardy, easily grown white. Tall and very beautiful. One of the best and most popular whites. \$.35
- SONATA** (Wmson 1929). 38". A delightful blend of delicate coloring. S. pale golden buff; F. gold, flushed lavender and lilac. Very fine. \$.35
- SOUV. de LOETITIA MICHAUD** (Millet 1923) 90. 48". An exquisite pale, lobelia blue self. The lovely blooms are illumined by heavy golden yellow veins on the haft of the falls, and a bright orange beard. Enormous blooms of perfect shape and splendid substance, on strong, slender, well branched stalks. This magnificent iris has a stateliness of bearing not seen in any other. Perfectly hardy, a strong grower and free bloomer, it is one of our most popular varieties. \$.50
- STEEPWAY** (Scott 1922) 82. 40". An indescribable blend with a general effect of deep purple pink. S. fawn suffused red violet; F. darker, a blend of red, blue, apricot, and purple. Beautiful glossy blooms. \$.25

- SUSAN BLISS** (Bliss 1922) 86. 38". Uniform deep rose pink with light orange beard. A very pleasing color. Recommended. \$.25
- SWAZI** (Bliss 1922) 84. 38". A very tall, deep velvety dark blue. A Dominion seedling with colors more similar to its parent than any other. Very late, and one of the largest and finest of Dominions. \$.75
- SWEET LAVENDER** (Bliss 1919). 36". A true lavender self, with large, beautifully frilled blooms of firm substance. \$.25
- TENEBRAE** (Bliss 1922) 88. 38". A Dominion seedling of deep, velvety purple. In mass one of our most pleasing deep purples. \$.25
- THESEUS** (Hort 1923) 83. 38". S. and F. pure creamy white. The haft of the falls is a mass of brilliant deep gold veins, which, with the yellow beard, makes a glowing area of yellow at the center of the bloom. A beautiful combination of gold and white. Large. \$.35
- TOMTIT** (Bliss 1919) 79. 18". Very dark mulberry purple, with good substance and horizontal falls. A late flowering dwarf, fine for the border in front of tall varieties. No other iris at all like it. \$.25
- TROPIC SEAS** (Shull 1926). 42". A very distinct Iris with a vivid deep "blue" effect, which brings to mind the intense deep blue of tropic seas, hence its name. *H. M., A. I. S. 1924.* \$.25
- TROSTRINGER** (H. P. Sass 1926). 36". A self of palest light rose. One of our most delicately beautiful pale selfs. \$.35
- VALENCIA** (M. M. 1926) 86. 24". A deep golden orange yellow. The closest approach to an orange. Very popular. \$.25
- VAN CLEVE** (Van Name 1928). 40". A very dark rich blue purple. A very fine iris of good shape and substance, and Dominion velvetiness. This is one of the most popular Irises in the garden. \$.50
- VESPER GOLD** (Wmson 1926) 89. 38". Buff, old gold, and lavender, blended to give a soft, harmonious mass. Floriferous and a fast grower. Fine to set off the reds. \$.25
- WEDGWOOD** (Dykes 1923) 87. 38". A self of almost true Wedgwood blue, with a fine white beard. The closest to a medium deep true blue. Always one of our most popular blues. \$.25
- WHITE QUEEN** (Geylenkek) 81. 30". A snow white with a pure white beard and greenish white throat. A fine Iris that blooms well. \$.25
- YELLOW MOON** (Sturt. 1923) 85. 34". A very uniform soft yellow with satiny texture, and a bloom of good size and shape. The best light yellow of most uniform color. Fine for massing. \$.25
- ZADA** (Emigholz 1926) 81. 35". A fine pure white with yellow beard. A fast grower, especially adapted to massing in the garden. \$.25
- ZULU** (Bliss 1920) 85. 38". S. clear steely blue; F. deep velvety blue purple. A late blooming Dominion seedling of striking color. \$.75

Intermediate Bearded Iris

These Irises bloom from ten to fifteen days ahead of the Tall Bearded Varieties, being crosses between the little Dwarfs and the late tall ones, and early species. They are intermediate in height as well as season, and are very useful in giving a prolonged Iris season. Among them are many colors not found in the later Bearded, and breeders are fast adding more marvelous new ones to their ranks.

- ALBICANS** (Lange 1860) 72. 30". A pure beautiful milk white with yellow beard. Albicans and Istria are the two finest white Intermediates. The white Iris of Mohammedan graveyards. Old but very beautiful. \$.25
- ALICE HORSEFALL** (H. P. Sass 1929). 30". "A big dark velvety red purple. Intermediate and one of the finest of this class. An orange beard gives a fine contrast. Blooms well into the tall-bearded season." Introducer's description. \$1.50
- AMAS** (Foster 1885) 75. 30". S. blue; F. violet purple. Very large beautiful blooms of a fine brilliant color. Well branched and floriferous. \$.25
- AMBERA** (H. P. Sass 1930). 28". A large clear canary yellow self of excellent shape and substance. Very charming and its fine shape and lasting substance make it a distinctly new thing in intermediates. An excellent iris, that we highly recommend. \$1.50
- CHALLENGER** (J. Sass 1930). 30". A fine new Intermediate with very large blooms of broad segments. S. dark purple; F. dark blackish violet. Our largest flowered Intermediate, and a very gorgeous iris. A brand new color, and extremely popular. \$1.00
- CHIEF** (Jacob Sass 1926). 22". A fine big blue purple Intermediate, very dark and a fine companion for the redder toned Challenger. Introducer's description. \$.50
- CRETAN** (Dykes 1923, Collected) 78. 15". S. deep brilliant blue violet; F. very dark blackish purple blue. One of the finest colors. \$.35
- CRIMSON KING** (Barr 1893) 83. 30". Beautiful deep red purple. As deep as Kochii, but redder. Tall, floriferous, and a good grower. \$.25
- CRYSORO** (Nich. 1931). 26". Intermediate. Crysoro has the clearest, deepest, most luminous yellow color of any bearded Iris. It is absolutely free from the old gold that gives the deep tone to Prairie Gold and other deep yellows, and is such a pleasing color that every one exclaims with pleasure at sight of its mass of deep glowing yellow. Its blooms are very large and ruffled, of good shape and fine substance. It is a good grower, very floriferous, and has a long period of bloom. Crysoro sets a new standard for deep clear yellow for both Intermediate and Tall Bearded Irises. *Honorable Mention, A. I. S. 1932.* \$7.50



Desert Gold

CYRUS (H. P. Sass 1931). 34". A very fine yellow Intermediate whose bloom extends well into the tall bearded season. A new type of yellow in Iris, being a deep empire yellow self, with a much deeper flush of yellow velvet overlaying the center of the Falls, which gives it a glowing effect. Good sized blooms of fine form and substance. *Honorable Mention, A. I. S. 1932.* \$1.00

DESERT GOLD (Kirkland 1930). 35". A distinctly new type of yellow. A pale beautiful yellow with a heavy gold beard. Its color is particularly luminous and pleasing. It is a great smooth bloom with broad, domed standards and very broad, widely flaring falls; just about perfect in shape. This marvelous yellow is totally different from any other. It is a late Intermediate, or very early T. B. This is proving to be one of the most popular Irises. *Award of Merit, A. I. S. 1932.* \$5.00

DOXA (H. P. Sass 1929). 20". An indescribable blend of exquisite beauty. The blooms are very large and of perfect shape and firmest substance. S. creamy buff, overlaid with an iridescent sheen; F. yellow, with an olive tinge at haft, suffused violet at center, clear yellow at tips. In mass effect at a distance it is a most charming deep cream. Absolutely unique and one of the most outstanding recent introductions. \$1.00

GNOME (Bliss 1921) 82. 30". A fine deep red purple, similar to Crimson King, but a larger bloom, deeper color, and different foliage. \$.25

INGEBORG (G. & K. 1908) 79. 30". A nice white that is very floriferous and a good grower. A purer color than Florentina alba. \$.25

ISTRIA (Dykes 1922, Collected) 79. 30". A white distinctly different from all others. Large beautiful blooms of exceptional substance, distinctly shaded palest green. This pale green tinting gives it a clarity and chasteness that is delightfully cool and refreshing. Very sweetly scented, and a great favorite. \$.35

KOCHII (Kerner 1887) 80. 28". Deep blackish purple. The old favorite early dark purple, which makes a gorgeous purple mass. \$.25

KURDISTAN (Dykes 1922) 84. 15". Deepest blackest purple, with very large blooms. Possibly the blackest purple Intermediate. \$.25

LOUIS BEL (Denis 1921) 81. 30". Very deep blackish violet purple self. A splendid Late Intermediate or Early Tall Bearded. Instantly recognizable because of its blackness, it has a richer, more glowing color than any other purple. Large extremely velvety blooms borne by a strong growing plant. A strikingly handsome iris. \$.50

LURIDA (Soland 1789). 15". A very attractive tawny bronze red. A very distinct color totally different from anything in T. B. Irises. \$.25

MAYGOLD (Nich. 1931). 28". Intermediate. Maygold has the same clear luminous tone as Crysoro, but in a light beautiful canary yellow. It has large smooth blooms of excellent substance and fine shape, borne in great profusion over a long period. It is well branched and a good grower. Both Crysoro and Maygold far surpass the older Intermediate yellows, with their height, large size, fine substance, and, particularly, their pleasing color. \$2.00

NYMPH (H. P. Sass 1927). 28". A very floriferous empire yellow of good substance. Another of Mr. Sass' fine new Intermediates. \$.25

OTOE (H. P. Sass 1927). 30". A fine new type of red intermediate, different from all others. An excellent grower, and a very good color. \$.35

PURPLE KING (Wallich 1830) 74. 30". Kochii color, but larger blooms, with broader segments and flaring falls. Better grower. \$.25

RAGUSA (H. P. Sass 1929). 28". S. pansy purple; F. blackish red purple. Large flowered and good substance, very floriferous. A new Sass intermediate that is very outstanding. Recommended. \$1.00

SHERWIN WRIGHT (Kohankie 1915) 76. 28" Very brilliant metallic golden yellow. Very early, being a late Intermediate. Fine. \$.25

SPARK (Nich. 1931). 28". Intermediate. A wonderful new color in Intermediates, and redder than any other Bearded Iris except Red Elf. In color a very brilliant dark garnet red, S. slightly lighter than F., which are very velvety. Its mass effect is darker and much redder than Peau Rouge or Apache. Very floriferous, bearing its medium sized blooms in great abundance,



Azurea, three inch Dwarf

and making such a fiery mass that it appeals to every one. Spark blooms with the Intermediates, but continues over into the early Tall Bearded season. A good grower, so its price is low. \$2.00

ZUA (Crawford 1914) 74. 18". White, delicately veined lavender throughout. Very large blooms with feathered edges, of heavy, crinkled, creped texture found in no other iris. Absolutely unique, and very pretty. \$.25

Dwarf Bearded Iris

These Irises are very dwarf in growth of leaves and stem, but with very large blooms for their height of stalk, so that when in bloom they form a carpet of flowers which almost completely hides their foliage. They come into bloom about a month before the first of the Tall Bearded, and are of great value for planting in rock gardens, for edgings, and for planting in front of the taller sorts. Interest in them is fast increasing, and the demand is so great that it is hard to supply all orders, even though they are hardy, fast growing little plants.

FLAVISSIMA Syn. **ARENARIA**. 3". A very dwarf little Bearded Species with brilliant yellow blooms borne in great abundance. Roots very small; looks almost like a minute yellow Regelia; grows and thrives wonderfully well if just given a sandy soil, which it requires, and is fine in the rock garden. We are very pleased to offer Flavissima, which is quite scarce. Vanilla scented. \$.75

AZUREA (Collected) 85. 4". An early sky blue dwarf that makes a beautiful light blue mass. Floriferous and a very good grower. \$.25

BLUE BEARD. 12". A very unusual blending of colors, cream white, yellow, brown and green. Strong growing, with large blooms. \$.25

COERULEA (Prince 1829). 5". A light blue dwarf that makes a beautiful carpet of light sky blue. Fine combined with yellows. \$.25

DR. MANN (Fryer 1924). 8". Quite different in color from any other. S. light smoky violet; F. petunia violet, shaded smoky violet at edges. Two blooms to the stem, and very fragrant. \$.35

EBONY. 8". The finest of all deep colored Dwarfs. A deep rich red purple, deeper and richer than Black Midget, with broad, flaring, velvety Falls. A glorious deep red with the sun through it. Good grower. \$.50

FLORIDA. 6". A large flowered, strong growing pale yellow. Florida is perhaps our best pale yellow Dwarf. \$.25

GLEE (McKinney 1923). 8". A very popular pale yellow with deep yellow beard. Two to three flowers per stem, and a fine grower. \$.35

GOLDEN FLEECE. 6". A very fine deep yellow. Clear color, bloom of good shape, this seems to be our best deep yellow. \$1.00

GRAMINEA (Bonnewitz 1920). 6". A rich red violet of fine form. Probably the reddest and best red purple dwarf. Profuse bloomer. \$.25

HARBOR LIGHTS (Burch. 1927). 6". The finest light yellow dwarf. Large flowers, and a clear beautiful color. Highly recommended. \$.50

HURON IMP (Burch. 1923). 6". A very deep blue toned self. One of the finest deep blue dwarfs. Large flowers, and quite scarce. \$.35

- MAROCAIN** (Millet 1914) 85. 5". A very deep blue black. An excellent color and a good flower. A very attractive color in mass. \$.25
- MAX.** 5". A fine yellow of very clear tone in mass, S. light yellow, F. darker, beard orange. One of the clearest yellows in mass. \$.50
- MIREILLE** (Millet 1911). 6". S. plum violet; F. deeper, bright yellow beard. A very richly colored dwarf, that is recommended. \$.25
- NEGUS** (Millet 1914). 6". A bright rich dark violet with a brilliant yellow beard. Nice smooth blooms of very fine color. \$.35
- NEOLA** (J. Sass 1932). 10". A fine new departure in color in the dwarf bearded, a beautiful brown toned blend. S. livid violet, F. deep livid brown shaded sorghum brown; pale yellow beard. Large flowers, borne in abundance. A welcome addition. \$1.00
- NIOBE** (Caparne 1901). 5". Very deep blue purple with a blue beard. One of the best of the black blues, a fine color in mass. \$.25
- ORANGE QUEEN** (Barr 1910). 5". A clear deep orange yellow. The best deep yellow, and a very good grower and profuse bloomer. \$.25
- PETITE AMIE** (Millet 1919). 10". A pretty creamy white with a greenish glow. One of the best white Dwarfs. \$.50
- PUMILA ATROVIOLACEA** (Todaro 1856) 81. 6". A deep violet purple of a bluer tone than Graminea. One of the best growers and a free bloomer. \$.25
- REFLECTION** (Burch. 1923). 6". A good sky blue, with larger flowers than Azurea and Coerulea. Also a stronger grower. Very fine. \$.35
- REICHENBACHII ORANGE** (Collected). 6". A clear beautiful deep yellow that is one of the best yellows, and always a favorite. \$.25
- ROSE MIST** (H. P. Sass 1931). 12". A rosy mauve, almost pink, Pumila hybrid that brings a new color into the dwarfs. \$.75
- SCHNEEKUPPE** (G. & K. 1910) 77. 8". A fine white, slightly taller than than most dwarfs. A good grower and very floriferous. \$.25
- SOCRATES.** 8". An excellent claret purple with white Beard. A good grower and a fine color. Different from any other. \$.35
- TITANIA** (H. P. Sass 1928). 6". A pure beautiful yellow with exceedingly large blooms, by far the largest of any yellow. Very fine. \$.50
- TONY** (H. P. Sass 1928). 8". A fine deep blackish red violet, with bright orange beard. Probably the best of its color. \$.50
- ULTRA** (H. P. Sass 1929). 10". The bluest of all the Dwarfs. A Pumila hybrid with two to three blooms to the stem. Very fine, and perhaps the bluest of all Irises. \$.50
- YELLOWBIRD** (Van Fleet 1926). 6". A fine yellow, of a velvety, olive tone. A larger flower than most, and highly recommended. \$.25

Autumn Blooming Iris

Within the last few years a few breeders have been turning out the pioneers of a wonderful new race of Autumn flowering Irises. These bloom in the Spring, and then again in the late Summer or Fall. So far only a few have been introduced, but it is expected that in the near future we will have many more, and in time will approximate the riot of color that is found in the Spring Iris Garden. Those we have now give us a fine range of color, and are very beautiful when they appear in the brisk clear days of September and October, cheerfully withstanding the snows and early freezes which we have here in New York.

Besides those regularly blooming in the Fall, there are others which give occasional Fall bloom. Many of the early Dwarfs do this, and some of the Tall Bearded. Apache, Crimson King, and Moa show this tendency. In more Southern latitudes there are still others, for which our New York season is too short.

This year we are very glad to offer for the first time three new Fall Blooming Beardless Iris, the first of their kind we have ever seen listed commercially. Two of them are very large and showy Louisiana Species; the other is our tiniest of all Iris, from the most northern state in the Union. This last, Lacustris, is particularly desirable for rock gardens, which lack bloom in the Fall, as well as for its own delightful little flowers.

AUTUMN FIRE (Nich. Jr. 1933). 40". A beautiful Fall blooming form of Fulva; a brilliant fiery red, almost scarlet in color. Blooms from the middle of August to late September. Very robust in growth, with exceedingly well branched stems. See Introductions. \$7.50

AUGUST FLAME (Nich. Jr. 1933). 40". A brilliant August blooming Fulva, flowering almost that entire month, and on into September. Large blooms of flame red, a little lighter than Autumn Fire. Same fine branching and vigorous growth, having five or six side branches and a dozen blooms to the stalk. See Introductions. \$7.50

ALLIES (Vilmorin 1925) 84. 30". S. deep reddish violet, tinged copper; F. deep purplish red, with red bronze markings on haft. Similar to Copper-smith, but much richer coloring. Very beautiful, and often blooms in late summer and autumn. \$.25

AUTUMN KING (H. P. Sass 1924) 77. 36". A very fine blue purple bi-color that regularly blooms both Spring and Fall. Often blooms for two weeks with six inches of snow on the ground, standing freezing temperature every night. Its brilliant blue is fine against the snow. \$.25

AUTUMN QUEEN (H. P. Sass 1926). 18". A clear pure white of good shape and substance that blooms in the Spring and then throughout late Summer and Fall. Very pretty and very popular. \$.50

GOLDEN HARVEST (J. Sass 1930). 20". A beautiful Fall blooming yellow. S. and F. citron yellow, suffused olive at haft and base of S. Brilliant orange beard. The only Fall blooming yellow. You can imagine nothing more beautiful than to walk down your garden in late September and find the lovely yellow blooms of Golden Harvest, the blue of Autumn King, and the white of Autumn Queen in all their glory. \$2.50

JEAN SIRET (Andre 1926). 10". A fine new everblooming dwarf that starts blooming with the earliest dwarfs and then blooms intermittently throughout the summer, and then is one of the freest of all late Fall bloomers. A good yellow flecked with blue. \$1.00

LACUSTRIS (U. S. Species). 2". Collected in Minnesota. A most exquisitely beautiful little Iris that regularly blooms in the Fall as well as the Spring, if kept moist at that time. This, the tiniest of all Irises, has perfectly shaped blooms, with miniature fans of ten to thirteen leaves. Soft lavender blue, delicately perfumed, and very rare. Does not seem to require an acid soil; just leaf mold and plenty of moisture. \$1.00

LEOPOLD (Caparne 1901) 76. 6". A fine purple Pumila that blooms in the Spring, and then again in mid-summer and in the Fall. Highly recommended. \$.50

OCTOBER OPERA (H. P. Sass 1932). 24". A fine new color in Fall bloomers, being very close to Opera's brilliant shade. Possibly the most attractive color of them all. Very late. \$10.00

OLIVE WHITE (H. P. Sass 1932). 20". A pretty cream colored flower with green gold veining, much like Doxa in shape of bloom and general appearance. A pleasing new color for the Fall. \$3.00

SOUV. LIEUT. CHAVAGNAC (Andre 1926). 12". Another everblooming dwarf like Jean Siret, but of a fine red violet color, and possibly even more free blooming in the Fall. \$1.00

ULTRA (H. P. Sass 1929). 10". A very true blue Dwarf of Pumila origin, having two to three blooms to the stem. Very fine, and a very free Fall bloomer. \$.50

Pogo-Cyclus Hybrids

These are hybrids between Bearded Iris and various *Oncocyclus* Species. They have inherited the unusual shapes and delicate venation of their *Oncocyclus* parents, and the good growing qualities of the Bearded Iris. They are all quite distinct, being lovely blends of beautiful and unusual colors. They grow and bloom well under exactly the same treatment as Bearded Iris, flowering with the Intermediates.

BALROUDOUR (J. Sass 1933). 15". An exquisite new color combination; S. soft bluish violet, F. and styles deep olive buff, darkening toward the center of the Falls. Olive yellow signal patch, red brown reticulation at haft, light blue beard tipped brown yellow. Two flowers to the stem and exceptionally vigorous. \$3.00

BELLORIO (Mohr 1924). 32". A very unusual mouse gray lit with pink, with purple netted veining. A hybrid of Korolkowi, with the same smooth texture and pleasing form. Good grower. No other Iris gives such a beautiful soft gray effect; very striking under artificial light. \$.50

BLUE TOPAZ (J. Sass 1933). 15". A striking combination of blue, brown, and green, delicately blended. S. and stigmas pale blue with darker sheen; styles same but tinted green. F. pale violet blue with warm, blackish brown signal patch below beard. Brown veining on haft, and a brown beard tipped darker brown further enrich the bloom. Floriferous, with two blooms to the stem. \$3.00

CONGRES (Cayeux 1924). 30". A very striking red bicolor. S. broad, light vinous red; F. bordeaux red, the whole bloom covered with netted veining of garnet red. Very free flowering. \$1.00

GRAY CLOUD (J. Sass 1933). 12". A delightful blend of blue, gray, red, green, and brown. S. pale campanula blue with brownish red stripes at base, and a brown purple sheen overlaying the center. F. and styles dawn gray with brown purple veins on the haft merging into a brown purple signal patch at the end of the beard. Green stripes extending from the patch to the edge of the Falls. White beard tipped brown. Two blooms to the stem. \$4.00

LADY LILFORD (Foster 1915) 79. 30". *Oncocyclus Paradoxa* X *Pallida*. An unusual shade of deep, black, blue violet, finely veined blacker violet. A black beard further deepens the color effect. Large flowers on tall stems, and a good grower. A beautiful and striking iris. \$.35

MONS. STEICHEN (Denis 1922). 12". *Chamaeiris alba* X *Iberica*. A beautiful blend of pearly white shaded turquoise blue in the S. and striped brown and spotted wine red in the Falls, brown veining at the throat, with bronzy russet purple styles. \$.75

MORERA (Mohr-M. 1929). 32". A soft, beautiful mulberry purple to lilac, Morera is a very appealing color. Large blooms, covered with netted veining, and with the characteristic Korolkowi shape. \$1.00

PARVAR (Foster 1909) 72. 20". *Oncocyclus Paradoxa* × *Variegata*. S. very vivid black violet; F. horizontal, narrow, soot black, with faint under tone of violet. It has a very broad, long, mossy brown beard that covers half the surface of the falls, and is one of its chief attractions. Absolutely unique, and a very beautiful and unusual flower. \$.50

SIR TREVOR LAWRENCE (Foster 1905) 79. 30". *Oncocyclus Iberica* × *Pallida*. Deep rosy mauve, heavily netted and veined darker. A rare and very beautiful hybrid of lovely soft shades of rose and mauve. Large blooms on tall stems. \$1.00

STORMY DAWN (J. Sass 1933). 10". The mingling of violet, blue, red-brown, green, and yellow brings to mind the glorious coloring of a storm cloud with the sun just breaking through it at dawn, whence its name. S. pale soft blue violet, darker at base with a reddish brown sheen. F. and styles pale blue, with brown veins on the haft and a large brown patch below the beard. Gray beard tipped brown and yellow. Over the blue of the Falls is an overlay of yellowish green, with green stripes running from the patch to the edge. Large flowers with flaring Falls, and a good grower. \$6.00

VELVO (J. Sass 1933). 8". An unusually beautiful flower, being the darkest and richest of these new Sass blends. S. pleroma violet darkening to haematoxylin violet at midrib; styles same color, veined darker. F. very velvety, dark madder violet overlaid red; margin, pleroma violet. Small black patch at the end of the bronzy brown beard. One to two blooms to the stem. \$7.50

WILLIAM MOHR (Mohr-Mitchell 1925) 81. 24". *Parisiana* × *Gatesii*. An enormous bloom of beautifully individual shape, which it inherited from its *Oncocyclus* parent, *Gatesii*. The ground color is a lovely shade of pale lilac, standards flushed darker, the whole flower delicately veined and netted dark manganese violet. The blooms are delightfully ruffled and of fine substance. An iris of such striking beauty and unusual loveliness that every one stops in enthusiastic admiration. Very floriferous and a good grower. Extremely popular. \$1.00

ZWANENBURG (Denis 1909) 82. 20". *Oncocyclus Susiana* × *Dwarf Bearded Lutescens Aurea*. A delicately beautiful blend of many colors. S. amber, washed olive green and lavender, the whole overlaid silvery white. F. very velvety, eery olive to fawn, flaked and striated deep maroon. Large well shaped flowers; hardy, fast growing, and very floriferous. Very beautiful, absolutely unique, and should be in every collection. \$.25

Oncocyclus and Regelias

This group contains some of the largest, the most curious and wonderful, and the most beautiful blooms of all Irises. They are the rarest Irises in commerce, as they require special treatment, but well repay the little extra care with wonderful blooms.

These lovely Irises can readily be grown and bloomed in our climate if we duplicate the summer desert conditions of their native homes, Asia Minor, Persia, and Turkestan. This is done as follows:

After the leaves have died down after blooming, or about July 25th here, dig, wash, and sun for two or three days, preserving intact the fleshy roots, as these sprout feeding rootlets in the Fall. Then place in a box of perfectly dry sand and store in a cool dry place. Add some tobacco dust to the sand to keep the aphids away.

Plant just a few days before the ground freezes in late Fall, about November 1st for most places. Plant two inches deep, and cover well with straw to prevent heaving; they are not injured by cold.

These Irises like a rich, well drained, sandy soil, with plenty of lime, and full sun to ripen off the roots before lifting. Some growers plant in a raised cold frame, closing it up throughout the Summer and Fall, leaving the plants in place the year around. They also can be left in place the year around in those of our Southern and Southwestern states that have a very dry Summer and Fall, and are particularly recommended for those sections, as under those conditions they will grow like weeds.

This group blooms with the Intermediates, their shades of reds and pinks filling a big gap in the colors of Intermediate Bearded. Do not let seed form, as it weakens the plants. They are fine subjects for the rock garden, or for planting with Breeder tulips, as well as being exquisitely beautiful in themselves, with their delicate blendings of gorgeous and unusual colors.



Susiana



Reticulata

Oncocyclus

SUSIANA (Collected in Asia Minor 1573). 18". This gorgeous Iris immediately attracts the attention of every one. Its immense blooms look to be black at a distance, but on close inspection are seen to be a very deep blackish purple brown intricately veined and speckled on a light background. The Falls are a little darker than the Standards, with style crests and beard black; below the broad black beard is a velvety deep purple black signal patch. The backs of the styles and the bases of the Standards are a wonderful ox-blood red, which suffuses the entire heart of the bloom with a rich deep red glow. The blooms are huge, with very broad, circular segments, and a characteristic globular shape. Susiana must be seen before one can appreciate its great glorious blooms with their wonderfully rich coloring. This is the Iris that is so beautifully displayed by the florists of Nice and Monte Carlo during the winter. Susiana is always so popular that there is never enough stock to meet the demand, so it is best to order early. \$1.50

Regelias

HOOGIANA (Collected in Turkestan, Hoog 1913). 30". An exquisitely beautiful species from the deserts of Turkestan. An even self color of a lovely shade of soft pale blue, illumined by a brilliant gold beard. The flowers are large and of perfect flaring shape, with broad petals which are pointed at the tips. They are of heavy substance and have a lustrous satiny sheen that with the color instantly reminds one of heavy, pale blue satin. Its roots are amazingly small, but produce stalks about 30 inches tall, each gracefully bearing two or three of the large beautiful blooms. The late W. R. Dykes says of it: "Iris Hoogiana is perhaps the most aristocratic of all Irises." Its color is not even approached by the best of the Tall Bearded blues, and it has a style all its own. This Iris is so popular that there is seldom enough stock to meet the demand. \$1.00

HOOGIANA—Violet purple variation. A very beautiful form identical with the type except that it has longer falls, which are flushed with violet purple, being deepest at the center. Very beautiful and quite distinct, and an extra fine grower. \$1.50

KOROLKOWI CONCOLOR (Collected in Turkestan, Baker, 1888). 24". S. and F. a very lovely and pleasing shade of pink violet, veined and netted with almost black purple. The beard and signal patch on the falls are black, and the styles almost so. The segments of the bloom are elongated and pointed, but of good width, forming a nice sized bloom of attractive shape. An unusual and beautiful bloom of very pleasing color. \$2.00

STOLONIFERA (Bokhara, Turkestan, Maxim. 1880). 30". S. bronze brown shading to a fine purple at center, finely veined brown throughout. F. with less purple, almost entirely a rich coppery red brown, veined lighter brown. Beard



Hoogiana



Stolonifera

yellow, styles light purple with brown crests. The center of the bloom is overlaid with an electric-blue sheen. In general, it is a rich, coppery brown blend. The blooms are large and well shaped, much like Tall Bearded, but both S. and F. have wavy edges and are pointed. A good grower, and an exceedingly beautiful Iris. \$1.00

VAGA (Collected in Turkestan 1887). 30". This is regarded by all who know it as one of the most exquisitely beautiful of all Iris. S. bronze, shading through purple to electric blue at center, veined and edged chocolate brown. F. bronze, shading to a fine purple at center, with brilliant blue beard. Styles purple overlaid blue, crests brown. The bloom is a lovely blend of bronze and electric blue, the clear blue suffusing the entire center of the flowers. This iris is a variation of Stolonifera, and has the same large wavy edged blooms, and fine growth. When one sees Vaga and Stolonifera, it is immediately apparent where the Persians got their suggestions for the brilliant, clear rich shades of blue, red, and brown used in their rugs. \$2.00

Regelio-Cyclus Hybrids

These are crosses between the Regelias and Oncocyclus Species, mostly introduced by C. G. Van Tubergen, of Holland. They are very beautiful and of a great diversity of coloring, from the deep rich selfs to pale, delicately veined and netted shades, some resembling the Regelias in shape, others their Oncocyclus parent. All are free flowering and of stronger and easier growth than their parent Species.

ASPASIA. 20". General effect is rich wine color. S. a fine reddish lavender, veined darker. F. strongly veined and dotted with dark reddish brown lavender, with darker signal patch and beard. Styles blackish violet. Well shaped bloom. \$1.50

CHARON. 24". One of the best of these hybrids. The blooms have a bronzy mahogany ground color beautifully veined with old gold and bronze. Especially fine, and recommended. \$1.50

FLECTA. 20". S. lavender; F. creamy grey ground color, veined and dotted red brown. Beard and signal patch darker, styles mahogany brown. A flower of medium depth of color. \$1.50

HEBE. 18". S. cream, suffused lavender, veined violet blue; F. creamy grey ground, heavily veined and dotted lavender purple. Beard and signal patch deep violet; styles solid lavender. \$1.00

HECATE. 20". General effect light rosy lilac. S. lilac rose; F. creamy ground color, veined and dotted red brown. Styles red brown, and signal patch deep velvety purple. Very beautiful coloring. \$1.00

HERA. 25". S. clear violet, veined deep purple; S. deep red violet, veined bronze. Styles paler lavender. One of the most beautiful of these, and one of the best growers of them all. \$1.00

IRENE. 20". S. cream, flushed pale lavender and veined with lavender purple; F. silvery grey, veined and dotted dark lavender purple. Signal patch very dark and velvety; styles reddish mahogany. A very beautiful bloom in light color tones. \$1.50

ORESTES. 30". The deepest and one of the most beautiful colors of this hybrid group. S. almost clear ruby red; F. bronzed ruby red, with darker veins. Signal patch dark and velvety, yellow beard, and brilliant purple styles. Its general effect is a deep, brilliant ruby red. The strongest grower and most floriferous of these hybrids. A gorgeously deep rich color, Orestes is most highly recommended. \$2.00

PSYCHE. 20". S. creamy grey, flushed pale lavender, veined purple; F. darker grey, prominently veined dark purple. Signal patch and beard dark brown. Deeper in tone than Irene. \$1.50

Bulbous Iris English Iris

There are no Iris more easily grown and so delightfully beautiful than these orchid-like English Iris. Their colorings are so delicate and their blooms so beautifully shaped and frilled that they instantly remind one of orchids. They are fine both in the garden and for cutting or shipping, blooming late in the Bearded season.

Plant in the Fall, three to four inches deep, in a well drained but fertile soil with plenty of humus, and cover lightly with a mulch of straw the first Winter. They stay in the ground the year 'round, and are no more bother than Daffodils. Should be planted in groups of six or more, so are priced by the three and the dozen.

	3	12
ADMIRAL—Very deep inky blue purple; the darkest blue in this list. Large flowers, midseason in bloom	\$1.00	\$3.00
ALENESFORD—Large flowers with wide, flaring falls; palest light blue, with just a suggestion of mauve; yellow touch in F.	1.00	3.00
CRATER LAKE—Bright clear blue self; quite tall; mid-season	1.00	3.00
FRANS HALS—Clear porcelain blue overlaying white50	1.50
GALE S. HILL—Rich deep wine red, a very rich and strikingly handsome flower with broad, flaring petals. Unlike any other	1.50	4.50
GRAND LILAS—Beautiful combination of white and lavender50	1.50
JOHN DUCKER—White, flushed soft rosy purple50	1.50
LIGHT BLUE—A very true blue, light in tone50	1.50
LINGERIE—A soft, even, clear mauve pink that is extremely beautiful and orchid like. Particularly delightful as a cut flower	Each	5.00
MONT BLANC—A beautiful pure gleaming white50	1.50
MOUNT RANIER—Magnificent pure white; giant in size and height	Each	3.00
PACIFICO—Very large flowers of palest light blue; holds color well. Very late and one of the tallest in this group	1.00	3.00
PERLE DES JARDINS—Pearl white, flamed light blue50	1.50
PRINCE OF WALES—A fine, rich deep blue75	2.00
PRINCESS DAGMAR—Large creamy white, reddish mauve spots ..	.50	1.50
ROSA BONHEUR—White, splashed carmine; very pretty50	1.50
ROYAL BLUE—A dark, clear blue, with just a hint of violet50	1.50
R. M. COOLEY—Pure delicate bird's egg blue; very clear and good	1.00	3.00
SANTIAM—White, delicately touched with pearl; very large flower	1.00	3.00
SKY BLUE—A soft azure blue; a very pretty color50	1.50
SURPRISE—Very dark, rich deep blue, with inky blue splashes ..	.50	1.50
TAHITI—A bewitchingly beautiful mauve and mother of pearl. Very distinct, extra early, and a rapid increaser	1.00	3.00

WEDGWOOD—A *Tingitana* hybrid which resembles the Dutch Iris but flowers about two weeks earlier. Very large and tall, with fine blooms of bright Wedgwood blue which are most beautiful, either out or in the garden. Extremely desirable because of its earliness, large size, and fine color.

3 for \$0.50; \$1.50 per dozen.

Dutch Iris

This wonderful group of Irises is of recent origin, but are so extremely beautiful that they are already very popular. They are about two weeks earlier than the Spanish Iris, and taller and larger. Their hardiness and vigor, with size and height, make them fine as cut flowers and they have a large range of colors, especially in the yellows, that are fine for color in the perennial border. Like the others, plant in groups in a well drained but fertile soil, about four inches deep.

	3	12
ADRIAN DACKER—20". Uniform purple lilac; good substance	\$0.50	\$1.50
ALBERT CUYP—22". White standards and pale lemon falls	.50	1.50
ANTON MAUVE—24". A lovely even shade of soft blue	.50	1.50
DAVID BLESS—24". Light blue; early and very large	.50	1.50
DAVID HARING—26". Tall early white with golden center	.50	1.50
GOLDEN BRONZE—22". S. dark violet blue; F. bronze, with large gold center; very large and beautiful flower	1.00	3.00
HART NIBBRIG—22". Clear deep blue and brilliant yellow	.50	1.50
HEEMSKERK—24". Earliest, largest, and finest yellow	.50	1.50
HOBBEEMA—22". S. pale blue; Falls a beautiful yellow	.50	1.50
IMPERATOR—Fine large brilliant blue; very popular	.35	1.00
LEONARDO DA VINCI—36". S. creamy white; F. canary yellow with orange stripe; very tall, with large flowers	.50	1.50
POGGENBEECK—20". A splendid flower of uniform dark blue	.50	1.50
REMBRANDT—24". One of the best and showiest varieties, a fine deep blue with brilliant orange central blotch	.50	1.50
THERESA SCHWARTZ—24". Pale cornflower-blue S.; Falls pure white, with narrow orange stripe. One of the loveliest	.35	1.00
VAN EVERDINGEN—24". S. white; F. yellow, orange blotch	.50	1.50
WHITE EXCELSIOR—24". Purest white of all; very beautiful	.50	1.50
YELLOW QUEEN—36". S. and F. bright golden yellow. Very large and tall, making a glorious splash of brilliant yellow	.50	1.50

Spanish Iris

The Spanish Iris follow the Dutch by about two weeks, and are about two weeks earlier than the English Iris. They are smaller than the Dutch, having more delicate colorings, and a differently shaped bloom from either of the other types. They supply a good range of yellows, a color lacking in the English Iris, which they overlap in season. They also have a much larger yellow blotch on the Falls in the colored varieties than the English do. Also, are sweetly perfumed. Same sandy soil and culture as for Dutch Iris.

	3	12
BELLE CHINOISE—Early yellow; very pretty	\$0.35	\$1.00
BLANCHE FLEUR—Fine white, distinct from other whites	.35	1.00
BRITISH QUEEN—Beautiful large pure white; tall and fine	.35	1.00
CAJANUS—Clear yellow; large flower and tall grower	.35	1.00
FLORA—S. white, tinged blue; F. cream, yellow blotch	.35	1.00
KING OF BLUES—Striking dark blue, small yellow blotch	.35	1.00
KING OF WHITES—Large beautiful creamy white	.35	1.00
LA NUIT—Violet blue, extra fine	.35	1.00
LOUISE—A particularly beautiful porcelain blue	.35	1.00
PRINCE HENRY—S. purple; F. bronzy brown, golden blotch	.35	1.00
QUEEN WILHELMINA—Fine white, small yellow blotch; early	.35	1.00
QUEEN EMMA—Extremely large golden yellow	.35	1.00
RECONNAISSANCE—Beautiful shades of bronze and gold	.35	1.00
THUNDERBOLT—S. violet-bronzy, F. bronzy brown with golden blotch. Very large blooms; late flowering	.50	1.50

Junos and Reticulatas

The Irises of this group are particularly unusual and very beautiful. Their colors are unique and the effect of the corn-like foliage after blooming is fine. In addition, they are all very sweetly scented, perfuming that entire part of the garden, and are very early, blooming with the crocus or just after. They are bulbs and are very easy to grow; merely plant them in a well drained soil and after that they almost take care of themselves.

ALATA (Native to Spain and Algeria). 6". A Juno with blooms of extraordinary beauty. The flowers are very much ruffled and frilled, and very fragrant. Blue to lilac in color, with a bright golden ridge in the center of the Falls. Very early, so requires protection here in New York. **\$3.00**

BUCHARICA (Collected near Bokhara 1902). 28". Juno. A very lovely and striking Iris quite different from all other types. It looks just like a miniature corn-stalk, with flowers at the top and in the axil of each leaf. The leaves are very glossy deep green, wide and down curving. The flowers are a lovely soft satiny yellow, with much deeper yellow on the broad lip of the falls. Free flowering and easily grown, with five to nine blooms to the stalk, Bucharica is the largest and finest of the Juno type. Once you plant its large bulb, it will bloom each year without extra care, and give you good increase. Bucharica is the **most sweetly scented of all Iris**, its delicious scent perfuming the entire garden. Very early, blooming with the Dwarf Bearded. Very rare, and highly recommended. **\$1.00**

HISTRIO. 6". Reticulata type, but earlier, with lighter and more blue flowers, with a fine gold signal. Quite scarce. **\$1.50**

HISTRIOIDES. 8". Reticulata type, but even earlier, bright blue with a golden ridge on Falls. Larger flower than Histrio, and deeper tone of blue. Makes a wonderful carpet of bloom in late March. **\$1.50**

JUNCEA (Native to Northern Africa). 8". A most vivid little yellow Iris that blooms very early. Flowers very fragrant and similar to Dutch Iris in shape. Makes a sheet of yellow bloom, as it is very floriferous, and grows well. Very desirable and scarce. **\$1.00**

ORCHIOIDES (Collected in Eastern Bokhara 1880). 12". Juno. A lovely and exquisite species similar to Bucharica, with the same sort of foliage but much more dwarf, with rich deep yellow flowers that are very dainty and exceedingly pretty. Very early blooming. Easily grown, but very rare. **\$2.00**

PERSICA (Native of Persia). 8". Juno. A beautiful little dwarf that blooms with the crocus (April 1st here), with foliage like Bucharica. Flowers white, flushed pale green; S. very minute, from below the bloom; F. large, triangular shaped, very wide at base, pointed at end, bright orange crest, large velvety soot black spot at tip. Styles large with long crests, with a



Bucharica, from Northern Persia

beautiful light blue green flush on back along midrib. Rare, and very sweet scented. \$1.50

RETICULATA (Collected in the Caucasus). 6". An exceedingly beautiful little Iris that blooms with the Crocus. Brilliant rich pansy violet flowers with a bright gold throat, delightfully violet scented. Easy to grow, but rare; fine for rock gardens. \$.75, 3 for \$2.00

RETICULATA CANTAB. 6". An exquisite shade of soft blue, with a brilliant orange signal. Very early, and a fine flower. \$3.00

SINDPERS. 8". Juno. A hybrid of Sindjarensis and Persica with brilliant turquoise-blue flowers and bright golden signal in Falls. Makes a carpet of color of an exquisite shade, blooming with Reticulata. \$3.00

VARTANI. 6". The earliest of all the Reticulata type, blooming about the middle of March here. Flowers are a pale lilac or light blue violet, with a delightful almond scent. \$2.00



MIDGARD

EUPHONY

CLARA NOYES

Beardless Iris Crested or Evansia Iris

In this group the falls have a crest that corresponds to the beard of Bearded Iris. The American Species are the smallest and most dwarf of all Irises, while the Foreign Species are taller with beautiful and unusual blooms quite different from Bearded Iris. They are all fine rock garden subjects, as they require a well drained, sandy soil. Work plenty of shredded peat moss or leaf mold into the soil to hold moisture for them. They bloom most freely in full sun, but will stand half shade. The dwarfs flower very early, the others blooming with the Bearded.

Native American Dwarfs

The American Dwarfs have beautifully minute blooms of the most exquisite perfection of detail imaginable. These dainty little gems are particularly charming in the rock garden, where their lovely soft colorings are at home with the other wildings.

CRISTATA (U. S. Species) **White Crested.** 4". Privately collected in North Carolina. A lovely shade of clear, true lavender, with a pure white crest on the falls. Charmingly beautiful, and very fragrant. Floriferous and a fast grower, with broad light green leaves that, after blooming continue to grow and be very ornamental. \$.25

CRISTATA (U. S. Species) **Orange Crested.** 4". Privately collected in Alabama. A paler shade of the same lovely, clear true lavender, with a bright orange crest on the falls. A delightful color combination, with the same fine foliage. Free blooming and sweet scented. \$.35

CRISTATA ALBA (U. S. Species). 4". Collected in Arkansas. A beautiful pure white with a brilliant golden crest. An exquisitely dainty little bloom of beautiful coloring, that is really too lovely to be described. Good grower, and very fragrant. Extremely rare. \$1.50

LACUSTRIS (U. S. Species). 2". Collected in Minnesota. A most exquisitely beautiful little bloom less than an inch in diameter on two inch stalks. This, the tiniest of all Iris, is perfectly shaped, with miniature fans of ten to thirteen leaves. A soft lavender blue, this dainty little gem is a rarity which will be a source of pride and pleasure to every collector. Another delightful feature is that it regularly blooms in the Fall, even in Minnesota, if kept moist in early Fall. Does not seem to require an acid soil; just leaf mold and moisture. Delicately perfumed and very scarce. \$1.00



WHITE EXCELSIOR
IMPERATOR

WEDGEWOOD
YELLOW QUEEN



Lacustris, two inch Dwarf

VERNA (U. S. Species) **Coastal Form.** 3". Privately collected in North Carolina. Brilliant lilac blue flowers, with orange crests. The blooms are slightly smaller than *Cristata* and much bluer, and of different shaped petals. Very narrow, grass like, dark green leaves. A very dainty little bloom of beautiful colors and fine fragrance. \$.35

VERNA (U. S. Species) **Piedmont Form.** 3". Collected in Virginia. The same brilliant lilac blue, banded orange at the haft, but a little larger bloom with broader, grass like, dark green leaves. The Piedmont Form is midway in size and width of leaf between the Coastal and the Mountain Forms, with distinctive features that neither of the others have. All three are floriferous and good growers, and fragrant. \$.35

VERNA (U. S. Species) **Mountain Form.** 4". Privately collected in Alabama. Larger flowers with broader petals and paler, softer lilac blue than the other two forms. Much larger and stronger in growth, with broader leaves that are glaucous blue green. Later in bloom than the other forms, with a larger orange crest area. Very fine. \$.50

Foreign Species

GRACILIPES (Japanese Species). 6". A lovely little pale lilac flower, touched with orange on the haft and the crest. Slender grass like leaves. A delicately beautiful wilding for the rock garden. \$.75

TECTORUM (Chinese Species). Two feet. This is the "roof iris" of Japan, which thrives in the straw thatch on their cottage roofs. The flowers are deep lilac blue, with a prominent feathery white crest. Very unusual blooms produced in great abundance. \$.25

TECTORUM ALBA (Chinese Species). Two feet. An exquisitely beautiful pure white form of the above. This white form of *Tectorum* is very rare and seldom offered for sale. However, it is an exceptionally beautiful flower that would be the pride of any collector. \$1.50

Spuria Irises

This Beardless group contains some of most attractive forms of Irises, the blooms being quite similar in shape to those of Dutch bulbous Iris, with the same bright vivid colors. Like the Dutch Iris they are fine as cut flowers, having the stiffest and heaviest of substance. Their blooms are large, borne on tall strong stems, and their foliage is long, narrow, and sword-like, being very stiff and very dark green in color. They bloom just before the Japanese Iris. They like open sun, but prefer a moist, rich garden loam, and are hardy, easy to grow, and very beautiful.

A. J. BALFOUR (Barr 1889). 50". A very fine tall Cambridge blue hybrid with large blooms and good growth that is very scarce. \$1.00

AUREA (Lindley 1847). 40". A very large deep rich golden yellow flower. The largest bloom and one of the best of all Spurias. Later blooming than any other yellow Spuria, and highly recommended. \$.50

MONAUREA (Monnieri x Aurea). 50". Cross between Spurias Monnieri and Aurea, *Monaurea* has very large flowers of deep clear yellow, and is a very hardy, strong growing plant. Exceedingly tall and handsome. \$1.00

MONNIERI (Collected). 48". A very handsome rich golden yellow flower, similar to Aurea but taller and earlier blooming. \$1.50

MONSPUR (Foster 1890). 48". Cross between Monnieri and Spuria type, with very beautiful blue purple flowers. Hardy and a good grower. \$.75

MRS. A. W. TAIT (Macoun). 40". A fine soft porcelain blue, which is very beautiful, free flowering, and a good grower. Fine in mass. \$.50

OCHROLEUCA (Linnaeus 1771, W. Asia Minor). 60". One of the most glorious of all Irises. An exceedingly handsome species with fine large ivory white flowers with a deep orange blotch at the throat. A rugged and hardy plant that, once established, will take care of itself under any conditions. Fine for planting at the water's edge, just above the water line, or in other damp places. A majestic and beautiful Iris that every garden should have, which I highly recommend. \$.50

Siberian Irises

The Siberian group are Irises with slender, grass like leaves, and usually tall slender stems, very slightly branched, with the flowers usually massed at the top. The flowers have a delicate, butterfly-like poise that is very beautiful and graceful, in comparison to the heavy blooms of the Tall Bearded. The clumps are very compact, so that they form beautiful masses of color, in white, shades of blue, purple, red-purple, and in the rarer species, yellow.

Siberians bloom with the later Tall Bearded, and will stand half shade, although they prefer full sun. They are fine for mixed borders or near pools, as they like a damper and richer soil than the Bearded. Very hardy, and will do well in any kind of soil. The Siberians are the most artistic of all Irises, and lend themselves readily to formal effects around pools or in formal gardens.

We have added a number of the newer and finer Siberians to our list, and it is with particular pleasure that we offer both of the rare and beautiful Yellow Siberians, *Forrestii* and *Wiltoni*, also a beautiful *Forrestii* seedling.

BLUE CHARM (H. P. Sass 1931). 50". A very fine large clear blue, tall and shapely. Undoubtedly one of the best. \$2.00

BUTTERFLY (Cleve. 1920). 40". A very beautiful color, being a lovely soft blue, with prominent white throat. \$.50

COREAN SPECIES (Collected in Corea). 33". S. pale blue lavender; F. deeper blue lavender, washed purple. Dotted and reticulated gold at the throat. A nice strong growing species that is very floriferous. \$.50

DELAVAYI (Collected in S. W. China, Micheli 1895). 50". A perfectly gorgeous Iris of a wonderful color not found in either Bearded Iris or Japanese. An indescribable color of which you can only say it is a glorious deep purple, but it is a pure, true purple that is not found in Bearded Iris. A perfectly even self color. As the blooms age they pale to a luscious pink purple that is a particularly lovely shade, the whole bloom mass being in perfect harmony, and indescribably beautiful. Very large blooms of fine substance and distinctive shape, borne in the greatest profusion. It is a fine grower, doing well in a dry location, but preferring damp rich soil. It blooms very late, at the same time as the Japanese Iris, and can be used with them to good advantage. One of the finest and most strikingly handsome of all Irises; there is none other that I would more highly recommend. \$1.50

DRAGONFLY (Dykes 1923). 56". A fine blue violet with bronze throat. Noted for its height and vigor. \$.50

EMPEROR (Collected in Japan). 50". A very tall, large flowered deep violet of fine shape. One of the largest and finest dark Siberians. \$.25

ENSATA (Collected in Central Asia). 12". Dainty soft lavender flowers that open very early, about with the Dwarf Bearded. Fine for dry places, as it is very drought resistant, but likes a moist spot. The leaves continue to grow all summer, making a mass of fine foliage. Fragrant. \$.50

FLORRIE RIDLER (Perry 1920). 42". Tall, large flowered and attractive, this is an exquisite shade of medium deep blue. \$.75

FORRESTII (Collected in N. W. Yunnan, Forrest). 20". Beautiful clear bright yellow flowers on slender stems. Their delicate beauty is perfectly delightful, either in the rock garden or the perennial border. Needs extra care until established, but well worth it. This fine Iris is very scarce, and is a rare beauty that will thrill any collector. \$2.00

FORRESTII—No. 3. 20". A *Forrestii* seedling of a pretty pale yellow delicately lined and flecked with leaf brown, giving a charming woodland effect. Delightful in the rock garden. \$2.00

KINGFISHER BLUE (Wallace 1924). 50". A seedling of Perry's Blue that is larger, with a deeper and brighter color. Very fine. \$.50

PAPILLON (Vilm. 1924). 50". Almost the same beautiful shade as Perry's Blue, but larger blooms of different form. \$.50

PEGGY PERRY (Perry 1912). 36". A fine rich deep violet blue, with very large flowers with broad, ruffled petals. Attractive, graceful, and quite early. Very popular and highly recommended as the best of the deep uniform blues. \$.35

PERIWINKLE (Cleve. 1926). 40". A darker, richer, more intense Perry's Blue, with larger and more finely formed flowers of heavy substance. Scarce and very much in demand. \$2.00

PERRY'S BLUE (Perry 1912). 46". A bright sky blue that is very lovely and unusual. The most popular Siberian, and highly recommended. \$.35

RED EMPEROR (Sturt. 1924). 30". Distinctively different in color from any other Siberian, being a bright wine red, shaded metallic blue on a part of the Falls. Fine and unusual. \$1.50

SKYLARK (Cleve. 1923). 44". An exquisite light blue with large flowers of fine form. One of the best light blues. \$.50

SNOW QUEEN (Collected in Japan, Barr). 33". Very beautiful snow white with yellow at throat. Large waxy blooms. Very popular. \$.25

SUNNYBROOK (Cleve. 1920). 36". A nice soft Alice blue with brighter blue styles making a pretty effect. Fine form. \$.35

WHITE DOVE (Cleveland 1927). 42". A very handsome pure milky white seedling of Emperor, with its parent's large, well shaped bloom, and broad segments. The largest and finest white Siberian. \$1.00

WILSONI (Collected in West Hupeh, C. H. Wright). 36". A fine yellow Siberian, a pale but beautiful and effective shade. Rare and very much in demand as yellow is the color most needed in the Siberian group. Very slender, graceful foliage. \$2.50



Louisiana Irises in Their Native Swamps

American Species

Until recently Europe and Asia had given us all of our very large and showy Beardless Species, and the general comment among many European gardeners was that American Species were small and insignificant. Dr. Small's discovery of the wonderful Louisiana Species has shown us that we had large showy Species in plenty, just waiting to be discovered and introduced. For I doubt if any one could call a seven and a half foot Iris small and insignificant, or the brilliant reds of Fulva.

These new Species that Dr. Small has found in the South have very great color variation, all shades of blue, lavender, purple, white, red, pink, and even yellow. In their red range they far exceed any other Irises of any kind. Their blooms are large and showy, and their foliage graceful and pretty.

Our other native species and their variations are not so tall or large, but are very pretty and dainty. I have never seen why all Iris should have to be six feet tall, with enormous blooms. Personally I would tire of the lack of variety in such a garden very quickly. Our smaller native species have a dainty delicateness and wild charm that the larger Bearded Iris lack; they add such a pleasing variety to the garden that every one should have at least a few of them. And then the Bearded Iris season is comparatively short, and our native Irises prolong the iris bloom in the garden, some earlier than the Bearded, others later.

Louisiana Species

All of the varieties listed below are guaranteed to be true to name as they were all collected by me personally, while in bloom in their native fields of Louisiana. For the last three years I have had the pleasure of collecting and studying these Species in their native swamps and bayous, fields and prairies, and have found it the most interesting sport I have ever enjoyed. As a result of these trips a glorious collection of these Irises has been amassed, containing many wonderful new colors, especially in the reds. This collection is second only to that of Dr. Small and E. J. Alexander, the discoverers and namers of these Species. Stock permits the introduction of only a few of these this year, but there will be many more in the future.

For the most of these Species I have the honor of being the first to list and introduce them to the general public, and I am sure that their marvelous new colors will attain them immediate popularity. Since they are hardy and easy to grow they should attain a permanent place in every garden, and are indispensable for water gardens.

Their blooming period is between that of Bearded Iris and Japanese Iris, filling a gap in the succession of Iris bloom in the garden. Although their ideal culture is the same as Japanese Iris, plenty of water at blooming time, they do well in ordinary garden soil, with plenty of peat moss or leaf mold worked into the soil. They like much heavier fertilization than the bearded Iris, rewarding you with a wealth of bloom.

See "Introductions for 1933" for new and beautiful forms, variations, and hybrids of the Louisiana Species introduced under name. These are quite distinct from the types of the Species as listed here.

CAROLINA. 2-3 ft. Light lavender blue flowers of good size. Orange yellow signal on falls. An early bloomer and strong grower with broad foliage. Very pretty, especially in masses. Fragrant. \$1.00

CHRYSABOLA. 3½ ft. A very bright violet blue with brilliant golden radiation from the throat out onto the blade of the falls. Fine large flowers and one of the best bright blues. \$4.00

CHRYSOPHOENICIA. 3-4 ft. Brilliant blue purple flowers with a broad golden signal patch. Large flowers of fine color. \$3.00

CITRICRISTATA. 4-5 ft. Very tall large blue lavender like Giganticoerulea, but with lemon crest surrounded by lemon area. \$3.00

ELEPHANTINA. 3 ft. Pure beautiful ivory white. Blooms of good size and a fine grower. Very floriferous and pretty. \$5.00

FOURCHIANA. 3 ft. Beautiful wine red. One of the best medium deep purples. Always covered with bloom, and strong grower. \$3.00

FULVA. 3 ft. The same brick or coppery red as the "Fulva" listed under "Other American Species," but larger, taller, and a stronger grower, with broader leaves. The other "Fulva" is from Kentucky. \$1.00

FULVA—Extra bright red. 3 ft. Brighter and more brilliant red than ordinary Fulva. Very fine and exceedingly brilliant. \$2.00

FULVA—Extra large and tall. 3½-4 ft. Taller and much larger bloom than ordinary Fulva. Also brighter color. Highly recommended. \$2.50

FULVA—Pink. 3 ft. A beautiful pink form, without the yellow base color that makes Fulva such a fiery red. Very unusual. \$3.00

GIGANTICOERULEA. 4-5 ft. Very large blooms on very tall stalks, with fine shape and substance. Lovely shades of light blue lavender. A strong grower, sometimes found over 7 ft. tall. Very fine. \$2.00

GIGANTICOERULEA ALBA. 4-5 ft. The same as the type, but an exceedingly beautiful pure brilliant white. A gloriously beautiful Iris. \$5.00

IANTHINA. 3 ft. One of the richest deep blues. Flowers not large, but a fine deep violet blue of distinct shade. Very floriferous and a fast grower. Highly recommended. \$4.00

IODANTHA. 4 ft. One of the largest and tallest of the dark Species; very large shapely blooms of deep rich blackish blue. A glorious mass of deep color; very strong grower. \$10.00

LANCIPETALA. 4 ft. Beautiful pale silvery lavender. Yellow crest. Very tall, large, and beautiful. Distinct color. \$4.00



A Cerise Red Hybrid

LUDOVICIANA. 3½ ft. Named Louisiana in Latin. A robust growing and free blooming purplish wine red. Its selection to bear the name of its native state indicates its fine quality. \$4.00

MORICOLOR. 3 ft. The most striking of all these Louisiana Species. Very deep mulberry purple, with a brilliant golden crest. Extremely dark and velvety. An exceedingly handsome flower of a color not found in Bearded Iris. Very beautiful, and very rare. \$5.00

OENANTHA. 4 ft. A tall, very large flowered wine red. Very outstanding, being one of the largest and tallest of the reds. A strong grower and very floriferous. Recommended. \$5.00

OOLOPHA. 4 ft. A distinct shade of lilac blue with large egg-shaped yellow crest. Size and height of Giganticoerulea, but slightly different shape. Very beautiful and distinct. \$5.00

REGALIS. 4 ft. One of the finest and most unusual of the Louisianas: very large and tall, with large, beautifully shaped blooms of a delightful shade of pale lilac pink, styles very large, with long feathery crests, which add to the beauty of the bloom. In mass effect a delicate shade of pink. Very broad foliage. \$10.00

RHODANTHA. 3 ft. A fine even self of pure, deep rose pink, quite the truest and prettiest pink of those we list. Makes a beautiful mass of a delightful shade of pink, in fine contrast with the deep blue green of its slender foliage. \$10.00

RHODOCHRYSEA. 3 ft. One of the best pinks. Deep brilliant old rose lilac. Very large brilliant bright gold crest. Fine. \$5.00

RUBICUNDA. 3½ ft. A fine large, very beautiful brilliant light cerise pink; bright yellow crest. Taller, larger, and a much stronger, more rapid grower than Rhodantha or Rhodochrysea. \$4.00

THOMASII. 3 ft. A brilliant red purple with bright golden crest. Redder than Chrysophoenicia. Very floriferous and a fine color. \$3.00

VINICOLOR. 3 ft. A gorgeous deep wine red; very dark and velvety. Next to Moricolor the richest colored of these Species. Very fine. \$3.00

VIOLILUTEA. 3½ ft. A pretty soft violet with bright yellow crest; large flowers and a good color. \$4.00

VIOLIPURPUREA. 3½ ft. Large flowered violet purple. Very pretty, and one of the best. Bright yellow crest. Slightly fragrant. \$3.00

VIRIDIVINEA. 3 ft. Red purple with a green crest. A good sized flower, and very free blooming. \$3.00

Other American Species

These are very pretty and artistic Irises, with dainty blooms and beautiful foliage, most of them fine as cut flowers, and with unusual and beautiful colors. They are not as tall and large as the Louisiana Species, but are daintier, and of course different. With the exception of Missouriensis, all of these species can be planted along streams, as they will stand water freezing around them in the Winter, which the Japanese and Louisianas cannot stand; they will also grow and bloom well in the cultivated garden. Missouriensis blooms early, but the others bloom after the Tall Bearded.

CACIQUE (Berry 1925). 36". A Fulva hybrid. Deep prune purple and blackish purple. Bright golden crest on falls. Taller, and a stronger grower than D. K. Williamson, with warmer but less brilliant coloring. \$1.00

CANADENSIS (Syn. Setosa Hookeri. Collected in Maine). 15". Very large beautiful bright blue flowers, with stiff pretty foliage. Like the Alaskan Setosa, but larger, darker, and much more dwarf. Fine in the rock garden; in fact quite at home as it is native among the granite boulders of the islands and coast of Maine. \$1.50

D. K. WILLIAMSON (Wmson 1918). 33". Fulva X Foliosa. A beautiful hybrid of deep velvety blue purple, with large flowers of good shape and very lasting substance. The color, shape of bloom, and stem arrangement are

very artistic. It is splendid as a cut flower, a vase of blooms always eliciting much admiration. Its foliage is a beautiful deep green, remaining so throughout the season. Fine for borders. \$.25

FOLIOSA (Collected in Mississippi 1902). 20". Large blooms of a beautiful brilliant blue, on zig-zag stems that barely rise above the leaves. Wide short foliage, deep green in color. This species has flowers of a more beautiful clearer blue than any other species. \$.25

FULVA (Collected in Mississippi Valley 1812). 30". A color absolutely unique among Irises. Flowers of brilliant coppery red, often described as bright terra-cotta. All six petals of the flowers open out flat, like the blooms of Japanese Iris. Narrow deep green leaves. \$.50

FULVALA (Dykes 1910). 30". A fine Fulva hybrid of a very bright deep red purple, with large golden arrow on falls. Very floriferous and artistic and fine as a cut flower. Strong growing, and very popular. \$.25

HEXAGONA. 2 ft. Bright blue flowers on an erect, though angled, stem; slender deep green leaves and slender rhizomes. Received from a Western grower; quite different from Foliosa, which has very broad leaves and a thick rhizome. Late blooming. \$1.00

MISSOURIENSIS (Collected in Colorado). 16". A very beautiful species that is native in the Rocky Mountains, with lavender or pale blue flowers that are comparatively large and quite showy. Pretty slender foliage. \$.50

MISSOURIENSIS—Blue Bird (Collected in Colorado). 16". Like the type, but flowers of deep violet blue. Very pretty, and recommended. \$1.00

MISSOURIENSIS—Snow Bird (Collected in Colorado). 16". A pure beautiful white without any veining. Very fine and highly recommended. Although Missouriensis likes plenty of water at blooming time, it can stand being very dry later in the season. All have very dainty and delicate flowers and foliage, M. Snow Bird being the prettiest and rarest. \$1.50

PRISMATICA (Collected in New Jersey). 24". One of the daintiest and most desirable of our native Irises. S. pale blue; F. white ground, with a frilled edging of light blue, and yellow throat. Very slender foliage. An American Siberian, but with daintier blooms of more delicate coloring. Grows along streams the same as Versicolor. Highly recommended. \$.50

PURPUREA. 3 ft. A raisin purple wild hybrid collected in the Southern United States. \$1.50

SETOSA (Collected in Alaska). 26". A very distinct and handsome Species from Alaska, with minute bristle-like standards. The Falls are very large and heart shaped, a rich blue purple in color, with a distinct white patch at base of blade. A strong grower with broad grey-green foliage. Very rare, and apparently not listed by any other Iris grower in America. We take great pleasure in offering it to the public. \$2.00



Fulva and Spider Lilies

SHREVEI (Collected in Arkansas). 36". A tall, well-branched species with flowers of a pleasing shade of lavender blue. Each branch rises to the same height as the main stalk. A very strong, hardy grower with tall straight foliage, that does well in either dry or wet place. \$.35

SHREVEI—White variation (Collected in Arkansas). 36". A very beautiful variation of the type. Blooms pure white frilled and bordered with pale blue. Very lovely and rare, and an even stronger grower than the type. Both are sweetly scented, with showy flowers, and very popular. \$.50

SISYRINCHIUM-GYNANDRIS (Collected in New York). 10". "Blue-eyed Grass." Lovely little sky blue flowers, with fine grass-like leaves. Fine for the rock garden or damp places. Makes beautiful tufted clumps. Blooms profusely in late June. \$.25

VERSICOLOR (Collected in New York). 24". Light lavender blue flowers. Pretty and extremely hardy; will stand water freezing around it in Winter. Very beautiful foliage and showy flowers; recommended for streams. \$.25

VERSICOLOR KERMESINA (Collected in U. S. before 1901). 30". A rare and beautiful form of Versicolor. Flowers brilliant claret red, borne in the greatest profusion. Tall, and exceedingly well branched, each stalk having four branches, the lower two of which each branch once of themselves. Much taller, better branched, more floriferous, and a much stronger grower than Versicolor itself. One of our hardiest and most beautiful species. Most highly recommended. \$.50

VERSICOLOR ROSEA (Collected in U. S.). A very beautiful form of Versicolor. Flowers light rose mauve. Otherwise like Versicolor type, but quite distinct. Very pretty and unusual. \$.75

VIRGINICA (Collected by Wmson in Indiana). 26". Light blue lavender flowers, with pretty foliage. Not the same as Versicolor, but quite similar to that species. Shrevei, Carolina, Virginica, and Versicolor are confused by some growers. Shrevei is quite distinct from the others, Carolina is distinct from the last two, Virginica and Versicolor being quite similar, but not the same. They all have differences of foliage, growth, color, and season. \$.25

Miscellaneous Species

ALBOPURPUREA (Baker 1896, E. Asia). 36". An Iris of unique coloring, somewhat like Jap Iris in shape and growth, but distinct. Small white S.; large Falls of a deep, vivid, almost true blue, with large white area at center of blade. Styles white, crest feathered with the blue of the Falls. Very pretty effect. \$1.00

PSEUDACORUS (Collected in Europe). 4 ft. Rich yellow flowers blooming right after the Tall Bearded, with the Siberians. Very strong growing, with beautiful foliage. So hardy that it can be planted along streams where water freezes over it in Winter, so is fine for naturalizing, but also thrives in good garden soil with the Siberians, giving the yellow color which they lack. Recommended. \$.25

PSEUDACORUS ALBA (Collected in Europe). 3 ft. A very rare and exceedingly beautiful form of Pseudacorus. Much larger flowers than the type, of a beautiful pure white, a color much needed in Irises that can stand Winter freezing where naturalized along streams. Very hardy and a strong grower. Popular, and highly recommended. \$1.00

Collections

The following are collections of the finest Irises we have—each has been carefully planned to give a good range of color and season. We would not be able to offer such wonderful bargains had not the stocks been purposely accumulated with that in view. For these collections contain no junk—they are all top grade Irises, of which you will always be proud.

Although our retail prices are already very low, the Collection prices are a big reduction from the retail value; this is only made possible by quantity sales, so please do not ask for substitutions in the collections.

COLLECTION "A" \$6.50

Amber Fine pure yellow	\$.25
Aphrodite Very tall pink25
Bruno Velvety brown75
Candelight Blue & yellow50
Cardinal Velvety redpurple50
Chartier Pure white35
Citronella Fine yellow25
Coppersmith Coppery red50
Duke of Bedford Deep blue25
Frieda Mohr Large pink50
Gay Hussar Yellow & red75
Germaine Perthuis Bronze25
Labor Heliotrope red35
Mary Barnett Blue & gold25
Midgard Pink & yellow50
Prairie Gold Deep yellow25
Purissima Tall pure white	1.00
Souv. L. Michaud Pale blue50
Vesper Gold Fine old gold25
Wedgwood Wedgwood blue25
Total value	\$8.45
3 each of Collection "A"	\$17.50

COLLECTION "B" \$3.25

Ambassadeur Velvety red	\$.25
Asia Tall lavender & gold25
Ballerine Tall pale blue25
Crusader Brilliant blue25
Dream Fine light pink25
Gold Imperial Deep yellow25
Jubilee Peaches & cream25
Kashmir White Tall white25
L. A. Williamson Early25
Leverrier Tall pink red25
Magnifica Huge lavender25
Mildred Presby Bicolor25
Mme. Gaudichau Blueblack25
Morning Splendor Deep red25
Mother of Pearl Pearl blue25
Peau Rouge Brilliant red25
Prospero Fine tall purple25
Rialgar Orange yellow25
Snow White Pure white35
Susan Bliss Deep pink25
Total value	\$5.10
3 each of Collection "B"	\$8.50

For those who have some of the Irises in the above collections, we are making this offer:

Make up your own collection! You may select one root each of any

- 16 \$.25 Irises for the price of 12, or \$3.00
- 15 .35 Irises for the price of 12, or \$4.20
- 15 .50 Irises for the price of 12, or \$6.00
- 15 .75 Irises for the price of 12, or \$9.00
- 15 1.00 Irises for \$12.00

These are to be selected from among the Tall, Intermediate, and Dwarf Bearded, and Pogo-Cyclus only, all others excluded.