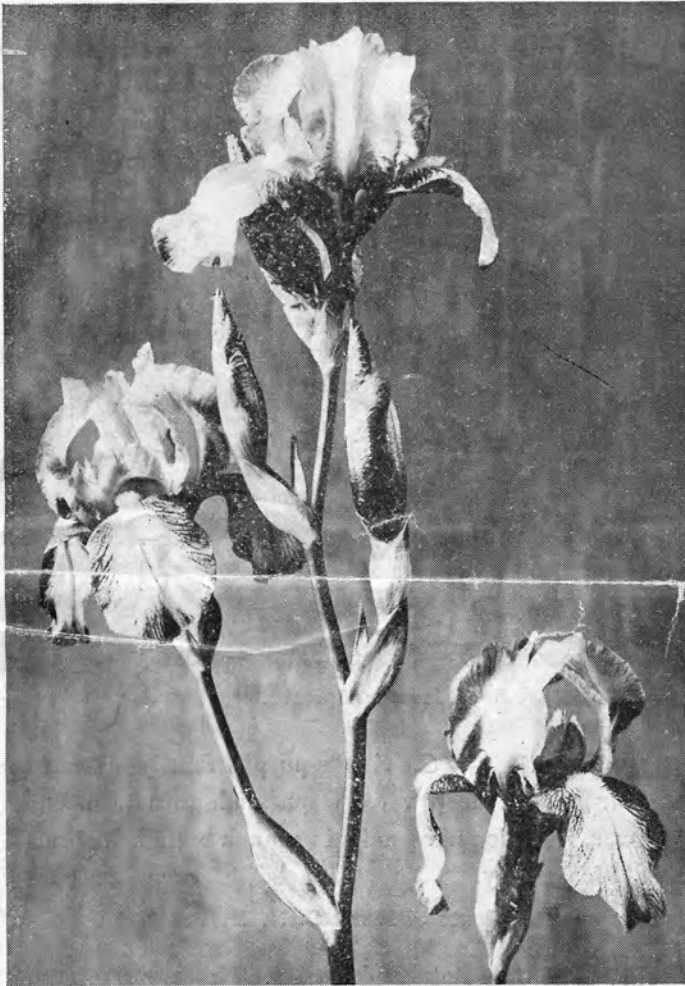


1930

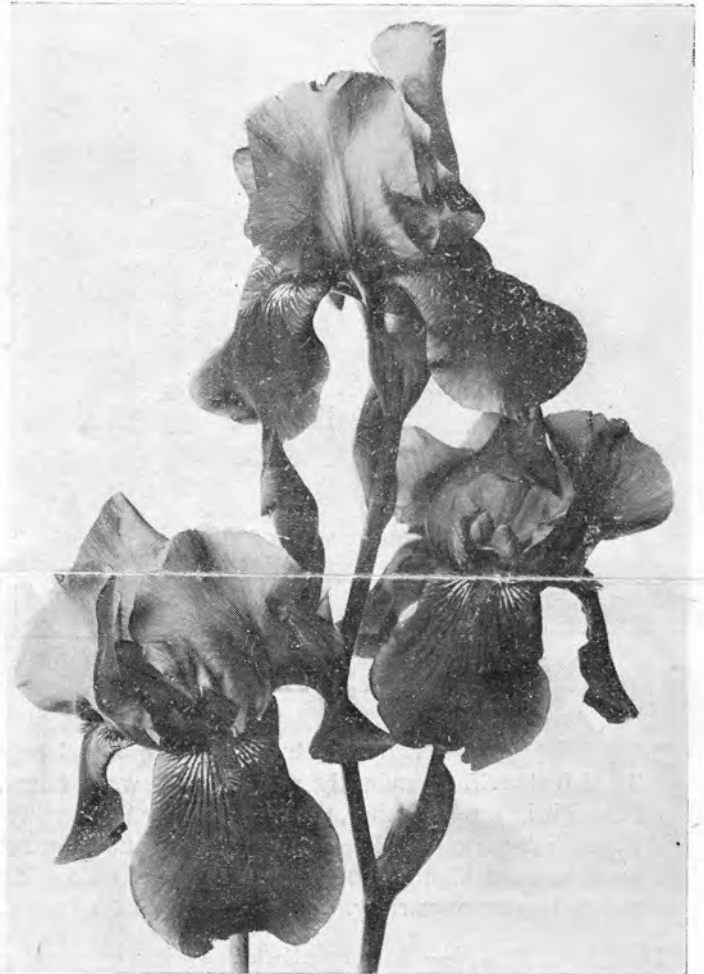
IRIS

1930

\$ 2



Iris Cydalise.



Iris Député Nomblot.

O ❄ C ❄
Cayeux & Le Clerc
O ❄ C ❄ O ❄

8, Quai de la Mégisserie, 8,
PARIS (France)

NOVELTIES FOR 1930

New varieties raised by us, offered for the first time in 1930

S. Standards (Upper petals). — *F. Falls* (Lower petals).



Iris Phébus.



Iris Prophète.

CAVATINE. — Vigorous sturdy plant, spikes strong, 2 1/2 feet tall, abundantly produced, flowers large. *S.* soft bright rosy-amber, the rose tone predominating; *F.* reddish-garnet, lighted gradually on the edge. A most unusual blending of reddish tones of unic effect as late landscape variety. *each* 300 francs.

CORIOLAN. — A very attractive strong growing plant, 3 feet tall, large flower beautifully formed. *S.* light yellowish-isabell or buff, veined and flushed slaty-heliotrope. *F.* wide, spreading almost horizontal, intense velvety purplish-garnet with delightful yellowish-garnet veinings at throat. *each* 250 fr.

CYDALISE. — The first worthy yellow plicata, noticeable for the large size of the flowers, well poised on the firm ramified stem 3 feet tall. *S.* luminous golden-yellow; *F.* straw-yellow, lighter on the center setting off the delicate veining and etching running from the throat and round the margin. An unusually brilliant floriferous late bloomer. *See illustration, page 1.* *each* 500 fr.

Certificate of Merit S. N. H. F.

DONA SOL. — *S.* vinous-purple faintly overlaid heliotrope; *F.* deep velvety purplish-garnet, a fine grower, free bloomer producing much branched stems 3 1/2 feet, early. *each* 250 fr.

Certificate of Merit S. N. H. F.

EMIR. — A tall stately plant 4 feet high, very large flowers of good form and heavy substance. *S.* soft rosy-purple blended bronzy-gold. *F.* garnet-purple of a very rich velvet effect; conspicuous orange beard. *each* 300 fr.

FORTUNIO. — *S.* azure-blue very faintly shaded lilac; *F.* of same colour a little deeper; the whole giving the impression of an exquisitely and uniform soft blue Iris of a particularly well poised flower, a good robust grower. 3 feet. *See illustration, page 4.*

each 300 fr.

Certificate of Merit S. N. H. F.

VARIETIES OUR OBTENTION PUT INTO COMMERCE IN 1930 (*continued*)

Iris Ministre Fernand David.

FULGORE. — Quite a new break in colour, this wonderful Iris; seen in sunshine it is truly *glowing*, fulgent as suggested by the name, no description could be adequate; a blending of bright rosy garnet and coppery-yellow is the nearest attempt. Although the colours are deeper on the flat spreading falls, the effect is *quite* unicolor of unusual *brilliance*. Of strong growth, flowering profusely on nearly 3 feet tall rigid stems, the flowers are of strong texture, orange beard. For massing, we think there is nothing so effective, late bloomer. *each* 250 fr.

Certificate of Merit S. N. H. F.

MEPHISTO. — A magnified "Louis Bel", a great advance in size and richness of colours; this is the darkest blue Iris we have raised. *S.* intense indigo-violet; *F.* blackish indigo-violet very velvety. Vigorous, free-flowering, stems very strong 2 1/2 feet tall, a late bloomer unrivalled for the deepness of its colours.

each 300 fr.

Certificate of Merit S. N. H. F.



Iris Mistral.

MINISTRE FERNAND DAVID. — A very large flower perfect in shape and of fine substance. *S.* luminous bright reddish-purple. *F.* intensely warm velvety dark reddish-purple, a much magnified "Germaine Perthuis" but of richer colouring and much larger. A wonderful free-bloomer, vigorous robust constitution and most strong rigid stems 3 feet. One of our best production. *See illustration, page 3.*

each 300 fr.

Certificate of Merit and Special Prize offered by the IRISES COMMISSION OF THE SOCIÉTÉ NATIONALE D'HORTICULTURE DE FRANCE, for the three best new Irises.

VARIETIES OUR OBTENTION PUT INTO COMMERCE IN 1930 (continued)



Iris Docteur Chobaut.



Iris Fortunio.

MISTRAL. — *S.* lavender-blue; *F.* purplish-red most obviously margined lilac, flowers of good form and size born on stiff rigid spikes 2 1/2 feet high.

See illustration, page 3. each 300 fr.

PHÉBUS. — Although not so deep in colour as "Pluie d'or" this is a fine yellow Iris which will be appreciated specially for the rounded well poised flower of good size well placed on rigid ramified spike over 3 feet. The whole flower is an uniform tone of lemon yellow, absolutely pure; a fine bloom of exquisite daintiness. A good acquisition.

See illustration, page 2. each 1.000 fr.

PROPHÈTE. — *S.* greyish-rosy lavender; *F.* wide flat spreading bronzy amaranthe-red, the center blending to rich bluish-violet setting of exquisitely the delicate lighter coloured margin. The flowers are very large of splendid form and substance; the plant of great vigour, stems firm 3 feet tall; flowering late.

See illustration, page 2. each 300 fr.

ICEBERG (*Cayeux 1930*). — The most profuse blooming white Iris we have raised, flowering on rigid branched spikes over 3 feet tall. Flowers of remarkably heavy substance, refined perfect form and wonderful poise. An absolutely pure, clean, cool dead white showing faintly the pale yellow of the throat orange-yellow beard. On account of its free-blooming and hard texture qualities, we strongly recommend Iceberg as a first rate plant for the garden or floral decorations, but we warn our customers that it thrives best under warm climes.

See illustration, page 5.

each 500 fr.

D^R CHOBAUT (*F. Denis*). — This worthy plant was raised by Mons. Denis the well known French hybridiser who has trusted us to put it into commerce. A much refined pure self coloured deep flax-blue Iris of the best form and texture; flowers of good size gracefully well placed on strong rigid stem nearly 3 feet tall. A fine grower, flowering late most copiously. Beard orange inside the throat and bluish on the front. An handsome most distinct blue Iris of quite unusual tone. See illustration, page 4.

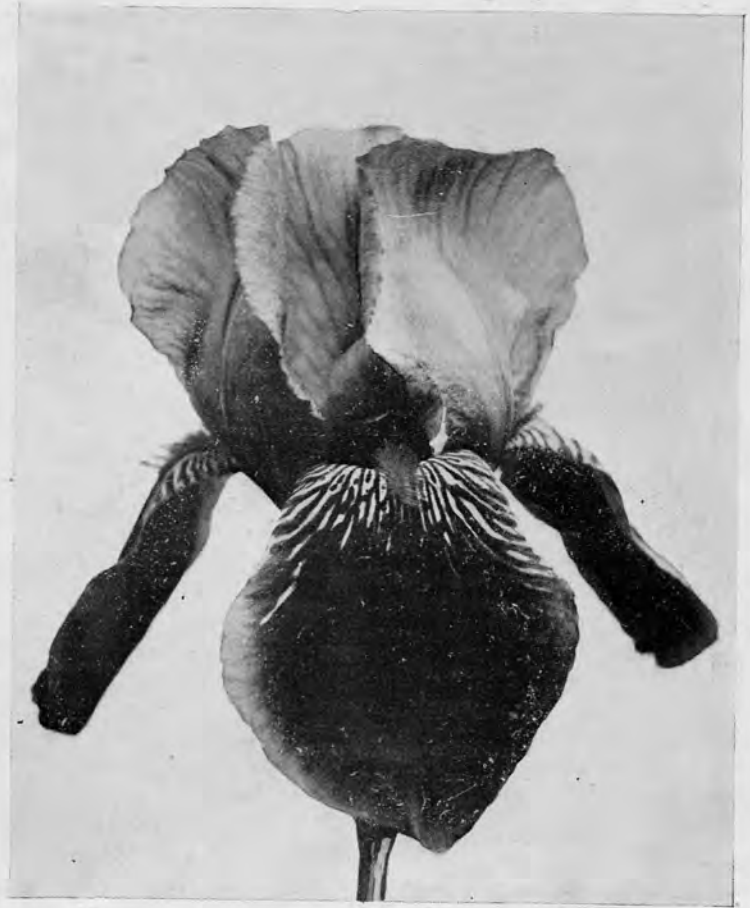
each 300 fr.

PALTEC (*Denis*). — A curious hybrid of *pallida* × *lectorum* of an uniform self blue, the beard and crest white, plant of good vigour, stems nearly 2 feet.

each 50 fr.



Iris Iceberg.



Iris Vert-Galant.

NEW VARIETIES OUR OBTENTION PUT INTO COMMERCE FOR THE FIRST TIME IN 1929

CANTILENE. — Flower of enormous size. Standards purple-violet with a slaty shading. Falls very wide of a very warm velvety reddish-purple; throat white striated and veined brown. A free-flowering variety of robust constitution growing above 3 feet tall.

each 150 fr.

Certificate of Merit S. N. H. F.

CLAUDE AUREAU. — Up to the present, this splendid Iris mark the greatest progress in the variegata group; this, considering its robust constitution, its imposing habit and the great size of the blooms. The standards of excellent form are greenish golden-yellow, making the most pleasing contrast with the wide long falls of intensely rich bordeaux wine colour with a large margin of bronzy-gold. It is a valuable acquisition of quite a striking effect. Height 3 feet.

each 500 fr.

Certificate of Merit of the SOCIÉTÉ NATIONALE D'HORTICULTURE DE FRANCE, 1928.

See illustration, page 7.

DÉPUTÉ NOMBLOT. — According to the opinions of the many Irises' Specialists of all countries, we are allowed to consider this plant as one of our greatest achievement. An imposing giant of the greatest vigour, strong foliage, stout, firm, much branched spike over 4 feet, enormous blooms perfect in texture and form. *S.* light glowing rosy-purple overlaid bronzy-gold. *F.* very wide, spreading, purplish-garnet red shading to lighter rosy-bronze at the edge with conspicuous veining ochry-bronze at throat and deep orange beard.

We have dedicated this outstanding Iris to Député Nomblot, General Secretary of the " Société Nationale d'Horticulture de France ".

each 400 fr.

Certificate of Merit of the SOCIÉTÉ NATIONALE D'HORTICULTURE DE FRANCE and W. R. DYKES Memorial Medal for the finest new Iris (May 1930).

See illustration, page 1.

VARIETIES OUR OBTENTION PUT INTO COMMERCE IN 1929 (*continued*)



Iris Graziella.

ÉVOLUTION. — In our opinion this Iris denote a real progression in the chromatic scale of new colourings. Flowers of excellent shape and of good size. Standards of a warm hue of coppery-bronze. Falls spreading of same colour well marked with a large central zone rosy-blue or pigeon throat like. A strong growing and free-flowering plant producing well branched stems over 3 feet tall, the basis of the leaves are strongly tinged purplish-brown as in some variegata. *each 200 fr.*

Certificate of Merit and Special Prize offered by the IRISES COMMISSION OF THE SOCIÉTÉ NATIONALE D'HORTICULTURE DE FRANCE, for the three best new Irises.

FRIVOLITÉ. — This is an improved "Marquissette" Standards shrimp-rose contrasting gracefully with the falls salmony overlaid purplish-crimson, the whole tinged yellow at base. Strong branched stems above 3 feet. *each 200 fr.*

GRAZIELLA. — Although belonging to the large-flowered pallida, which are mainly early flowering plants, this variety is with us, one of the latest to flower. The bloom is purplish crimson or light magenta-red, relieved at the throat and on the middle of the falls by a large white blot enlighting harmoniously the whole. The stems reach nearly 4 feet bearing four tiers of 3 flowers on the same level. A sturdy free-flowering variety in the style of "Aphrodite" but a long way better. *each 150 fr.*

HELIOS. — When flowered for the first time, this Iris has been a great surprise, as it marked an enormous stride in the long wanted large flowering yellows. In this variety the wide standards pure lemon-yellow are peculiarly well formed, the falls of same tone are delicately reticulated very light brown and clear purplish-rose almost invisible as the flower open. Beard golden-yellow, throat of the style flushed cream. A strong vigorous plant. Height over 3 feet. *each 300 fr.*

Certificate of Merit and Special Price offered by the "IRISES COMMISSION OF THE SOCIÉTÉ NATIONALE D'HORTICULTURE DE FRANCE" for the three best new Irises.

HERNANI. — We are of opinion, that for the present "Hernani" is the nearest approach to red. In fact, seen in mass in the sunshine it is quite rutilant with its standards coppery-rose slightly flushed heliotrope and the garnet-red falls of a remarkably bright warm tone. Height 2 1/2 feet. *each 200 fr.*

MADAME SEROUGE. — "Black Prince" famous for its intensely deep colouring, but reputed as a poor slow grower is one of the ancestors of this new variety. The flowers are of great size, standards overlaid light violet. The falls spreading almost horizontally are large well rounded of a warm tone intense blackish purple-red enlightened bishop's violet round the margin. Strong robust constitution, stems rigid 3 1/2 feet tall. *each 200 fr.*

Certificate of Merit and Special Prize offered by the "IRISES COMMISSION OF THE SOCIÉTÉ NATIONALE D'HORTICULTURE DE FRANCE" for the three best new Irises.

VARIETIES OUR OBTENTION PUT INTO COMMERCE IN 1929 (*continued*)

PHEGRE. — This new variety throwing stems 3 1/2 feet tall bearing enormous flowers. The standards are lavender suffused lilac, the falls spreading almost horizontally amaranthine-rose paling off gradually to light lavender at the margins. A very fine ample plant of great vigour. *each 150 fr.*

Certificate of Merit S. N. H. F.

POLICHINELLE. — A most curious hybrid for the form and the quite new unknown colouring. Standards very broad light buff splashed pale blue contrasting most conspicuously with the falls violet, tinted aniline-red on the center and margined bronzy-yellow; throat white reticulated brown, beard sulphur-yellow. Absolutely distinct. Height 3 1/2 feet. *each 150 fr.*

Certificate of Merit S. N. H. F.

VERT-GALANT. — The photo figured in this catalogue do not convey a fair idea of the perfect beauty, the perfection, the amplitude, nor of the opulence of colourings of "Vert-Galant" which has been recommended by the Irises Commission of the SOCIÉTÉ NATIONALE D'HORTICULTURE DE FRANCE for the W. R. Dykes Memorial Medal as the finest new Iris of the year (May 28 th. 1929). Strong much branched stems over 4 feet tall bearing well poised flowers. Standards coppery-fawn suffused lilac, falls round vivid garnet-red edged bronze. Wide yellow throat reticulated brown. Beard yellow. Height over 4 feet. *each 750 fr.*

Certificate of Merit of the SOCIÉTÉ NATIONALE D'HORTICULTURE DE FRANCE and W. R. DYKES Memorial Medal for the finest new Iris of the year (May 28 th 1929).

See illustration, page 5.



Iris Claude Aureau.

NEW VARIETIES OUR OBTENTION PUT INTO COMMERCE FOR THE FIRST TIME IN 1928

ANNE-MARIE CAYEUX. — Up to the present time, there is no Iris of such charm and refinement, the smooth, soft tones of this flower are undecipherable, a most delicate blending of the sky's colours at sunset and those of pigeons, throat would give a poor idea of this charming beauty. The flowers are very large, perfectly formed of an *unusual, thick leathery substance*. The whole effect is wonderfully beautiful, soft rosy-heliotrope with greyish-amber, beard orange. The plant is of the greatest vigour, flowering profusely; the stems 3 feet tall are branching.

This fine Iris is quite *unrivalled for duration and distinctness*, we strongly recommend this for exhibition, the garden, or floral decoration *each 250 francs*

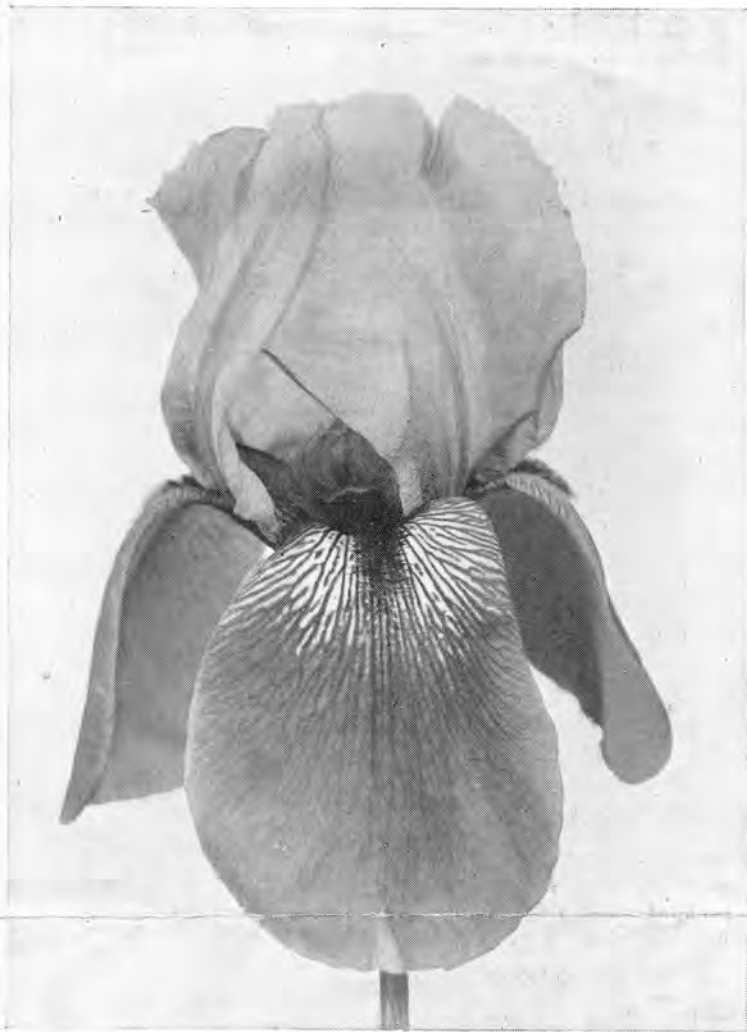
Certificate of Merit S. N. H. F.

CASSANDRE. — Very vigorous plant, well branched strong and erect stems. *S.* smoky rose lavender. *F.* purplish garnet with narrow lilac border. Flower of good substance, and very beautiful shape. Height 4 ft. . . . *each 100 fr.*

Certificate of Merit S. N. H. F.

DON JUAN. — Immense flower reaching over 3 inches wide, excellent in shape with flatish almost spreading falls. A sturdy grower of the greatest freedom producing strong erect well ramified stems. *S.* light rosy-lilac shaded bronze. *F.* very wide purplish garnet-red shading lighter towards the edges; large white throat with brown veins, height 3 feet. Certainly one of our finest production of that year. . . *each 150 fr.*

Certificate of Merit and Special Price offered by the « IRISES COMMISSION OF THE SOCIÉTÉ NATIONALE D'HORTICULTURE DE FRANCE » for the three best new Irises.



Iris Nêne.

FARANDOLE. — Flowers of the largest size borne on very strong robust stems 3 feet tall and of a special quite unusual colours. *S.* light rosy-lilac. *F.* purplish-rose with lighter shading at margin making a most attractive contrast. A strong vigorous well branched variety. each 150 fr.

Certificate of Merit S. N. H. F.

GLUCK. — This late flowering Iris issued from *Flaming Sword* × *Chasseur* is quite distinct and special on account of its novel curious colouring. *S.* bronzy fawn slightly lightened lilac. *F.* garnet-red velvet with darker veins edged pale bronze. A fine grower over 3 feet tall of striking appearance.

each 100 fr.

LUCIANE. — A wonderfully free growing Iris and one of the latest to flower. *S.* bright lilac. *F.* spreading reddish-violet, striated deeper violet, shading lighter at the edges; throat white with dark violet veinings; height 3 feet.

each 100 fr.

NÈNE. — This is the largest Iris known up to the present, the flowers are over 9 inches long borne on 4 feet stems measuring nearly 2 inches in circumference, dividing into 3 to 4 branches. The shape is splendid with divisions over 3 inches wide. *S.* soft clear lilac. *F.* vinous red lighter at the margins white throat very large veined brown. A stately imposing plant when in full flower.

each 150 fr.



Iris Rose-Marie.

NUMA ROUMESTAN. — The general effect of this warm coloured Iris is most distinct and attractive, the rich amaranth-red hue is more specially bright when seen at the sunshine. *S.* light vinous-red. *F.* amaranth-red shot garnet, beard orange. Strong erect growing plant with flowers of great substance, late flowering Height 3 feet. each 100 fr.

PLUIE D'OR (Golden Rain). — For a long time, a self pure golden yellow Iris of good growth, tall habit and flowers of good size has been the aim of most raisers. If we consider « Gold Imperial » or « Amber » to mention few only of recent pure yellow productions; the habit of the plants and the size of the flowers leave much to desire. As for « Shekinah » if its growing qualities are satisfying, its colour is weak passing away to light sulphur-yellow when fully open. *Pluie d'Or* is the first large flowered Iris pure deep yellow of actual value put into commerce. The many branched strong firm stems over 3 feet tall bearing neat pure yellow flowers in great number. This outstanding matchless production, has raised, this spring, most enthusiastic admiration from all our visitors. each 500 fr.

Certificate of Merit of the SOCIÉTÉ NATIONALE D'HORTICULTURE DE FRANCE and W. R. DYKES Memorial Medal for the finest new Iris of the year.

VARIETIES OUR OBTENTION PUT INTO COMMERCE IN 1928 (*continued*)

ROSE-MARIE. — Well branched strong firm stems over 3 feet tall. The flowers are of a fine flattened shape, expanding in profusion in the same time. *S.* light violet with a greyish-slaty reflect. *F.* at right angles to the standards, gracefully frilled, purple-red on the center, shading lighter at the edges: large white throat reticulated violet. An Iris of exceptional vigour recommendable specially for the profuse way it flower late in season. *each 125 francs*

See illustration, page 8.

YVES LASSAILLY. — Up to the present time, we have not seen anything yet in the way of this fine distinct Iris; the delightful colours, the enormous size and the perfect shape of its flowers are unrivalled. *S.* pure white. *F.* wide, almost flat spreaded with a suffusion of soft sky-blue on the

center; large throat strongly reticulated fawn; the whole of an exquisitely fresh appearance. As seen on the figure, the firm stems 4 feet high, well branched, bears 4 to 5 flowers expended at the time. Exceedingly free, a grand toned Iris for landscape. *each 150 francs*

Certificate of Merit and Special Price offered by the « IRIS COMMISSION OF THE SOCIÉTÉ NATIONALE D'HORTICULTURE DE FRANCE » for the three best new Irises.

See illustration, page 10.

ZAMPA. — Flowers of fine perfect form. *S.* metallic-blue *F.* half spreading of same colour deepening of the center. An almost self-coloured variety the greatest freedom and vigour producing very strong rigid stems of fine habit over 3 feet high. *each 75 francs*

Certificate of Merit S. N. H. F.

VARIETES OUR OBTENTION PUT INTO COMMERCE BEFORE 1927

ALCYON (*Cayeux 1925*). — Pure white flowers with a few light reticulations at the throat. Stalks very strong. For massing or group. Height 2 1/2 feet. *ten 45 fr. each 5 fr*

ARLETTE (*Cayeux 1925*). — Self colour cream white with bright golden yellow beard and throat. *F.* horizontally reflexed. Very distinct. For massing or group. Height 2 1/2 feet.

ten 110 fr. each 12 fr.

Certificate of Merit S. N. H. F.

AZYIADE (*Cayeux 1925*) (*pallida dalmatica* × *M. Massé*). — This cross has given us stately high plants among which Azyiadé was prominently selected for enormous flowers reaching 8 inches wide. *S.* beautiful sky-blue. *F.* spreading soft bluish-mauve. A free-growing plant with rigid stems over 4 feet high. *each 50 fr.*

Certificate of Merit S. N. H. F.

BARCAROLLE (*Cayeux 1925*). — *S.* soft rose shaded pale lilac lighted white. *F.* of a soft but warm tone of rose overlaid lilac, yellow beard and throat. For massing or group. Height 2 1/2 feet. *ten 90 fr. each 10 fr.*

BÉLISAIRE (*Cayeux 1924*). — Very large flowers. *S.* fawn coloured. *F.* rosy crimson quite a new colour. Height 3 ft.

ten 180 fr. each 20 fr.

BOREAL (*Cayeux 1927*). — A well branched plant with large flowers of perfect shape. *S.* white with a very slight tinge of sky bleue, throat sulphur-yellow. *F.* of same colour, spreading. A fine self coloured Iris producing a white effect. Height 3 1/2 ft. *each 75 fr.*

BOUREM (*Cayeux 1925*) (*Peau Rouge* × *Opéra*). — Of quite a special colouring, these two varieties have produced distinct shades of colours of theirs own and unique. *S.* of red bordeaux wine tone. *F.* large, well rounded aniline-violet shaded velvety garnet-red. Sturdy and free-flowering. Height 2 1/2 ft.

ten 180 fr. each 20 fr.

CIGALE (*Cayeux 1926*). — The quaintest plicata we know of quite a distinct colouring. *S.* rosy purple speckled white at the base. *F.* of same colour with a broad white center. Quite a new colouring amongs Irises. Height 3 ft. *each 50 fr.*

CLAUDE MONET (*Cayeux 1925*). — Named after the great painter who so fondly grow Irises, this new obtention hold a well marked place amongs the variegata. *S.* pure canary yellow. *F.* spreading maculated garnet-red on yellow with a broad margin golden yellow. Height 2 1/2 ft.

ten 280 fr. each 30 fr.

Certificate of Merit S. N. H. F.

DÉESSE (*Cayeux 1926*). — Strong well branched stems carrying enormous flowers. *S.* clear lavender-lilac. *F.* very large well rounded light violet lighted purplish-red. A vigorous free flowering plant. Height 3 ft. *each 50 fr.*

Certificate of Merit S. N. H. F.

DISTINCTION (*Cayeux 1925*). — *S.* soft rose lighted sulphur-yellow at base. *F.* of a glistening pure rose slightly toned lilac; cream-yellow throat reticulated light-brown, orange beard. For massing or group. *ten 70 fr. each 8 fr.*

Certificate of Merit S. N. H. F.

DRYADE (*Cayeux 1924*). — *S.* metallic blue. *F.* reddish purple reticulated fawn at the most effective throat. Very large flowers. Very late and vigorous variety. Height 3 1/2 feet.

ten 140 fr. each 15 fr.

DURANDAL (*Cayeux*). — Very beautiful variety of the Pallida group. *S.* coppery amaranth red. *F.* garnet red; curious and uncommon colouring. Height 3 1/2 feet. *ten 450 fr. each 50 fr.*

Certificate of Merit S. N. H. F.

ECLAIREUR (*Cayeux 1923*). — *S.* white very slightly shaded of fine lilac; *F.* rosy violet suffused and richly edged clear lilac. Throat reticulated buff on a white ground. A magnificent variety unusually free-flowering. *ten 36 fr. each 4 fr.*

Certificate of Merit S. N. H. F.

ENSORCELEUR (*Cayeux 1926*). — Flower of exceptional size. *S.* most exquisitely stippled and striated of lilac on white ground. *F.* reflexed at right angle with same stippling of darker lilac. Quite a special setting of colours suggesting some Japanese Irises. (*I. Kaempferi*). Absolutely novel. Height 2 1/2 ft.

ten 450 fr. each 50 fr.

Certificate of Merit S. N. H. F.

VARIETIES OUR OBTENTION PUT INTO COMMERCE BEFORE 1927 (continued)



Iris Yves Lassailly.

FASCINATION (*Cayeux 1927*). — A beautiful coloured pallida vigorous and free-flowering. Enormous flowers of fine shape and colour, a bright self purplish pink of a stronger tone than any variety of similar colour known up to now. Height 4 ft.
each 100 fr.

FEDORA (*Cayeux 1923*). — *S.* old gold yellow, large and perfect form. *F.* rich deep reddish violet purple broadly edged gold; throat sulphur yellow reticulated reddish-purple. Very free-flowering variety. One of the greatest *variegata* (*Roi des Iris* × *Prosper Laugier*).
ten 55 fr. each 6 fr.

Certificate of Merit S. N. H. F.

FIDELIO (*Cayeux 1924*). — *S.* metallic blue. *F.* clear violet tinted plum violet at the center, reticulated brown at the throat. Enormous flowers. Height 3 1/2 ft.
ten 55 fr. each 6 fr.

Certificate of Merit S. N. H. F.

FLORIAN (*Cayeux 1927*). — A most free-flowering sturdy vigorous plant. *S.* rosy-amaranth coloured. *F.* reddish garnet, throat veined brown on white ground. Height 2 1/2 ft.
each 70 fr.

FLORIDOR (*Cayeux*). — A curious variety self slaty-blue, strongly scented. Height 4 ft.
ten 110 fr. each 12 fr.

FRAGONARD (*Cayeux 1926*). — *S.* light purplish rose. *F.* of same shade but a little deeper. The general effect of the whole group is an unusually distinct of rose colour. Hardy and free growing. Height 3 ft.
ten 450 fr. each 50 fr.

Certificate of Merit S. N. H. F.

FRANCHEVILLE (*Cayeux 1927*). — Enormous flowers of striking effect carried on stout well branched stems. *S.* shammy-fawn tinged clear lilac. *F.* purplish-red lighted heliotrope at the margins, throat wide reticulated brown, beard orange-yellow. Height 4 1/2 ft.
each 70 fr.

Certificate of Merit S. N. H. F.

GAULOIS (*Cayeux 1926*). — When seen in full light the colouring of the flowers are of a specially rich warm tone of quite an Oriental effect. *S.* golden yellow ground suffused and overlaid of bronzy-rose, styles golden yellow. *F.* of good size of a bordeaux red wine colour. The two tones contrasting each others in the most brilliant effect. Height 2 1/2 ft.

ten 280 fr. each 30 fr.

Certificate of Merit S. N. H. F.

GLORIÆ (*Cayeux 1924*). — One of the largest flower know. *S.* self blue. *F.* metallic violet-blue, reticulated brown at the throat. Variety of high merit. Height 3 1/2 feet.

ten 140 fr. each 15 fr.

Certificate of Merite S. N. H. F.

IDÉAL (*Cayeux 1923*). — *S.* pure blue; *F.* self coloured a tone deeper of beautiful royal blue. Very pure colouring and distinct variety
ten 45 fr. each 5 fr.

Certificate of Merite S. N. H. F.

IMPERATOR (*Cayeux 1923*). — *S.* clear violet tinted buff; *F.* reddish-violet, throat reticulated with red-brown. Very vigorous plant producing very strong stems.

ten 70 fr. each 8 fr.

Certificate of Merite S. N. H. F.

INGRES (*Cayeux 1922*). — *S.* lilac heliotrope. *F.* heliotrope and violet. A distinct smoky mingled colouring

ten 36 fr. each 4 fr.

JACQUELINE GUILLOT (*Coyeux 1924*). — Ideal colour! Pure self lavender blue, white beards. Large flower. Very free flowering variety. Height 3 ft.
ten 70 fr. each 8 fr.

Certificate of Merite S. N. H. F.

JEAN CHEVREAU (*Cayeux 1923*). — *S.* light yellow shaded isabelle; *F.* milky white-thiny stippled with violet-brown at the throat and the margins of the segments. New colouring, quite unique. Strong and free-flowering variety.

ten 55 fr. each 6 fr.

Certificate of Merite S. N. H. F.

VARIETIES OUR OBTENTION PUT INTO COMMERCE BEFORE 1927 (continued)

LABOR (*Cayeux 1926*). — We place this before you as the most extraordinary Iris we have raised. *S.* rosy amaranth. *F.* well rounded, heliotrope with an aniline sheen, throat very lightly striated brown, beards yellow. Height 2 1/2 ft.

The Iris's amateurs, visiting us, end of May, in full flowering time, in our trial grounds, have been much impressed in the front of this striking novelty. *each 75 fr.*

LE GRAND FERRÉ (*Cayeux 1924*). — *S.* fawn grey shaded heliotrope. *F.* vinous red lighted and margined fawn with a clear whitish sheen and brown at the throat. New and distinct colour. Quite unique. Height 3 1/2 ft.

ten 180 fr. each 20 fr.

Certificate of Merit International Irises Congress 1922
Special Price offered by Mr. Denis for the best new Iris seedling.

LE VARDAR (*Cayeux*). — Very nice rosy mauve colour, fresh and exquisite. Vigorous plant. Height 4 ft.

ten 55 fr. each 6 fr.

LIBERTY (*Cayeux*). — *S.* slaty fawn and yellow. *F.* magenta red brown tinged, reticulated brown and yellow at the base. Height 2 1/2 *hundred 400 fr. ten 45 fr. each 5 fr.*

MADAME ABEL CHATENAY (*Cayeux 1924*). — *S.* rosy-lilac. *F.* rosy-heliotrope, reticulated fawn on white at the throat, yellow beards. Distinct colour. Height 3 ft. *ten 55 fr. each 6 fr.*

Certificate of Merit S. N. H. F.

MADAME HENRI CAYEUX (*Cayeux 1924*). — *S.* smoky reddish violet. *F.* velvety dark crimson lighted on the edges, with light reticulations at the throat. Brown-yellow beards. Very strong stems. Of the same type as Ambassadeur, but dissimilar. Height 3 1/2 ft. *ten 140 fr. each 15 fr.*

Certificate of Merit S. N. H. F.

MADAME JANIAUD (*Cayeux 1923*). — *S.* lilac suffused buff; *F.* slate-violet margined lilac. Curious and new colouring. Very free-flowering plant. *hundred 240 fr. ten 27 fr. each 3 fr.*

MAGENTA (*Cayeux 1927*). — As its name implies this variety is of a novel, unique and quite distinct colour among Irises. The flowers are of good shape and of long duration. When, for the first time, we saw the first flowers expending a bright self pinky-red, it suggested us the appropriate name depicting so well the unusual colour of this most interesting Iris. Height 2 1/2 ft. *each 125 fr.*

Certificate of Merit S. N. H. F.

MA MIE (*Cayeux 1906*). — White flower reticulated blue at the edge, very fresh uncommon colouring.

hundred 200 fr. ten 22 fr. each 2 fr. 50

MARC AUREAU (*Cayeux 1925*). — We have found this variety among seedlings of the finest variegata. The plant is strong hardy and free-flowering. *S.* light lavender. *F.* plum purplish-violet shading heliotrope at the margins. A magnificent variety Height 3 ft. *ten 180 fr. each 20 fr.*

Certificate of Merit S. N. H. F.

MAROTTE (*Cayeux 1927*). — This fine strong growing variety which has Ambassadeur and Gloriosa as ancestors give splendid flowers. *S.* electric-blue. *F.* very broad violet-red. Height 4 1/2 ft. *each 75 fr.*



Iris Boréal.

MARQUISSETTE (*Cayeux 1926*). — Of quite a new distinct shade of a self shrimp pink, lightly striated maroon at throat. A quaint distinct colouring of quite peculiar effect. Height 3 ft.

ten 450 fr. each 50 fr.

Certificate of Merit S. N. H. F.

MEDITATION (*Cayeux 1926*). — A sturdy vigorous plant with stems bearing 4 to 5 flowers expanded together of distinct pleasing colouring. *S.* lavender blue entirely marbled and reticulated of white. *F.* almost flat reflexed, clear purplish-pink with throat reticulated of brown, orange beards. Height 3 ft.

ten 280 fr. each 30 fr.

Certificate of Merit S. N. H. F.

MONASTIR (*Cayeux 1922*). — *S.* clear violet-blue. *F.* violet-purple. Strong variety for group purposes.

ten 36 fr. each 4 fr.

MUSCADIN (*Cayeux 1925*). — *S.* canary yellow. *F.* violet metallic blue overlaid elaret, with a broad margin sulphur yellow. An impressive colouring. For massing or group. Height 3 feet.

ten 110 fr. each 12 fr.

NADIA (*Cayeux 1926*). — Flower large. *S.* light rosy-amaranth standing upright. *F.* reddish garnet. A beautiful rich colouring. Height 3 ft. *ten 280 fr. each 30 fr.*

Certificate of Merit S. N. H. F.

NEMO (*Cayeux 1927*). — Issued from Mesopotamica × an unnamed seedling, this distinct variety most vigorous, exceedingly free-flowering is absolutely hardy. The flowers of perfect shape, born on well branched stems 4 feet high, are of a pleasing self metallic-blue enhanced by the conspicuous bright yellow beard. Sweet scented and of fascinating effect. *each 50 fr.*

Certificate of Merit S. N. H. F.

VARIETIES OUR OBTENTION PUT INTO COMMERCE BEFORE 1927 (continued)

- OPHELIA** (*Cayeux 1925*). — A beautiful distinct and entirely novel colouring. *S.* golden coppery shaded heliotrope in the center. *F.* sulphur-yellow maculated light heliotrope with golden copper margins; this vigorous most free-flowering variety is absolutely different from all Irises known for the perfect shape of its flowers as for the striking special colouring. Height 2 1/2 ft. *each 50 fr.*
- PANTAGRUEL** (*Cayeux 1927*). — Of quite an extraordinary vigour, this plant is in flowers, under our climate about the 13th to the 20th of May. Flowers of perfect shape, born on very strong thick stems of a fine self violet-rose colour lighted of white at the throat, beard yellow. Most free-flowering with a strong scent. Height 4 1/2 ft. *each 50 fr.*
- PAPILLON** (*Cayeux*). — *S.* sky-blue mauve shaded. *F.* purple violet lavender border. Late flowering. Height 2 1/2 feet. *ten 90 fr. each 10 fr.*
- PAUL HUET** (*Cayeux*). — *S.* bluish-lilac. *F.* purple-violet reticulated brown, very good free-flowering variety. Height 3 1/2 ft. *ten 140 fr. each 15 fr.*
Certificate of Merit S. N. H. F.
- PAVANE** (*Cayeux 1925*). — Very fine Iris of quite unique colours. *S.* of red bordeaux wine tone. *F.* large, well rounded spreading purplish garnetred. Stems very firm. The main flowering season is very late. Height 3 ft. *ten 450 fr. each 50 fr.*
- PEAU-ROUGE** (*Cayeux 1922*). — *S.* coppery red hardly shaded, with violet. *F.* deep blood red, throat reticulated yellow, beard light brownish yellow. The reddest toned Iris yet in cultivation. Quite new colouring. *ten 70 fr. each 8 fr.*
Certificate of Merit S. N. H. F.
- PHOCÉE** (*Cayeux*). — *S.* rosy lavender. *F.* violet red paler at the edges. Very large flower, good grower variety. Height 3 1/2 feet. *ten 280 fr. each 30 fr.*
Certificate of Merit S. N. H. F.
- PHRYNÉ** (*Cayeux 1925*). — A magnificent production we obtained by crossing the Ricardi Madame Durrand by Lord of June; the flowers are enormous. *S.* rosy-lavender. *F.* vinous-lilac paling off to silvery-white at the margins. Height 3 ft. *ten 280 fr. each 30 fr.*
- RAHNA** (*Cayeux 1925*). — *S.* clear greyish dove colour shaded lavender with gold yellow base. *F.* flax-blue. Sweet and distinct colour. For massing or group. Height 2 1/2 feet. *ten 90 fr. each 10 fr.*
- RENÉ CAYEUX** (*Cayeux 1924*). — A very vigorous and distinct plant. Quite an unique novelty! One of the latest flowering variety known. A complex hybrid having as ancestors: Black Prince, Monsignor and the nicest *I. macrantha*. Very large flowers. *S.* white shaded lilac. *F.* crimson reddish violet reticulated white at the throat. Height 3 1/2 feet. *ten 450 fr. each 50 fr.*
- SALOMÉ** (*Cayeux 1925*). — Large broad flower. *S.* light blue lavender. *F.* reddish purple with maroon striated throat. A fine typical bicoloured Iris. Height 3 ft. *ten 180 fr. each 20 fr.*
- SALONIQUE** (*Cayeux 1923*). — *S.* clear creamy yellow. *F.* violet purple throat veined white. The great effect of the flower comes from its unusual colour. Strong and very free-flowering plant. *hundred 320 fr. ten 36 fr. each 4 fr.*
Certificate of Merit S. N. H. F.
- SANDRINE** (*Cayeux 1927*). — A very large flowered magnificent variety of good shape. *S.* fawn brown washed heliotrope. *F.* very large amaranth-red lighted and washed of rosy-mauve on the margins. Height 3 1/2 ft. *each 75 fr.*
- SENSATION** (*Cayeux 1925*). — An acquisition of considerable merit, firm well branched stems bearing flowers of immense size averaging 8 inches, perfect in form and of exceptionally strong texture. Self coloured aniline-blue while expanding, it takes very slightly a clearer tone when quite open. *F.* horizontally spreading. Height 4 feet. *ten 450 fr. each 50 fr.*
Certificate of Merit S. N. H. F.
- SOLFERINO** (*Cayeux 1925*). — Certainly the most red coloured pallida known up to now; this splendid production grows to 4 1/2 feet and is exceedingly vigorous. Its bright lilac red colour is still quite matchless. Height 4 1/2 feet. *ten 450 fr. each 50 fr.*
Certificate of Merit S. N. H. F.
- THAIS** (*Cayeux 1926*). — An ideal large perfectly formed flower of an attractive tone of rosy-mauve slightly deeper on the well rounded falls. A stately free-growing plant producing strong tall stems carrying 4 to 5 expanded blooms at same time. Height 3 1/2 ft. *ten 450 fr. each 50 fr.*
Certificate of Merit S. N. H. F.
- TROUVAILLE** (*Cayeux 1924*). — *S.* pure white. *F.* crimson-violet with wide white margin most effective. Very strong stems. *ten 140 fr. each 15 fr.*
Certificate of Merit S. N. H. F.

RECENT INTRODUCTION AND SCARCE VARIETIES

- AMBASSADEUR** (*Vilm. 1920*). — *S.* smoky reddish violet. *F.* velvety dark reddish of great substance. Falls reflexed horizontally. Beard and style yellow. Variety of great merit. *ten 36 fr. each 4 fr.*
- AMBER** (*Dykes 1924*). — A good yellow variety. A vigorous plant with spikes above 3 feet tall. A quick grower and very free flowering. *ten 180 fr. each 20 fr.*
Award of Merit 1924 at the R. H. S.
- APHRODITE** (*Dykes 1922*). — Rosy violet, self colour, center slightly white lighted. Vigorous and rigid plant. Height 4 ft. *each 20 fr.*
- ASIA** (*Yeld 1920*). — *S.* pale lavender suffused and reticulated yellow at the base. *F.* light violet purple paler at the edges. Bright yellow beard. One of the most glorious Irises in cultivation. *ten 70 fr. each 8 fr.*

RECENT INTRODUCTIONS AND SCARCE VARIETIES (continued)

- ATHANAEL** (Millet 1925). — *S.* brown pink strongly washed of light bishop's violet. *F.* petunia violet shading to dark vinous purple boldly margined creamy-white, throat with maroon reticulations. Height 3 ft. *ten* 180 fr. *each* 20 fr.
- AURELLE** (Denis 1924). — *S.* light purplish blue. *F.* rich glowing crimson purple with a golden beard. *ten* 90 fr. *each* 10 fr.
- AUTOCRAT** (Cleveland 1920). — *S.* lobelia blue. *F.* same colour a little darker reticulated velvety violet. Height 2 1/2 ft. *ten* 70 fr. *each* 8 fr.
- BALLERINE** (Vilm. 1920). — *S.* clear violet blue. *F.* very wide of same colour, but little deeper, quite distinct, sweetly scented *ten* 36 fr. *each* 4 fr.
- BRUNO** (Bliss 1922). — *S.* bronze suffused and lightened with lavender shading to yellow at the base. *F.* deep rich red purple. An Iris of exceptional size and quality. *ten* 280 fr. *each* 30 fr.
- CARDINAL** (Bliss 1922). — Dominion race. *S.* of a distinctive shade of lavender, overlaid with rose; *F.* rich prune purple of Dominion shape. *each* 125 fr.
- CHASSEUR** (Vilm. 1923). — Colour deep yellow. The flowers are large. Height 3 ft. *ten* 70 fr. *each* 8 fr.
- DARIEL** (Baker 1927). — The flowers are of great size somewhat resembling *Sr* de Madame Gaudichau, but with more intensely blue standards, and rich purple falls. Height 2 1/2 ft. *each* 75 fr.
- DOMINION** (Bliss 1917). — *S.* violet blue. *F.* spreading velvety purple indigo. Height 3 ft. *each* 50 fr.
- DUKE OF BEDFORD** (Bliss 1922). — *S.* deep reddish violet; *F.* much deeper, almost velvety blackish purple, giving the effect of deep violet with a reddish sheen. Height 3 ft. *ten* 280 fr. *each* 30 fr.
- EVADNE** (Bliss 1924). — A beautiful rosy-red self. Height 3 1/2 ft. *ten* 380 fr. *each* 40 fr.
- FLAMMERSCHWERT** (G. and K.). — Same colour but brighter than Iris King. Very flowering variety. *ten* 90 fr. *each* 10 fr.
- GERMAINE PERTHUIS** (Millet 1924). — Enormous flowers carried on firm 3 feet stems. *S.* violet-purple lighted with brighter tone of violet-purple. *F.* bishop's violet. Issued of *Sr* de Mme Gaudichau. Extra. *ten* 230 fr. *each* 25 fr.
Certificate of Merit S. N. H. F.
- GOLD IMPERIAL** (Sturtevant 1924). — Self yellow with orange beard. Height 2 1/2 ft. *ten* 140 fr. *each* 15 fr.
- HERODIADE** (Millet 1926). — *S.* bright rosy-lilac. *F.* glistening reddish mauve; the general effect is a beautiful deep rose most recommended for massing. *ten* 140 fr. *each* 15 fr.
- JALAPA** (Millet 1926). — Flowers of medium size. *S.* quite pure ochreous chromium yellow. *F.* deep ochre-yellow reticulated purplish maroon. A most effective plant for groups. *ten* 140 fr. *each* 15 fr.
- LA NAVARRAISE** (Millet 1926). — Variety issued from pallida with large flowers carried on tall rigid stems. *S.* violaceous-mauve. *F.* reddish-violet striated maroon at the throat. *ten* 140 fr. *each* 15 fr.
- LELIA** (Millet 1926). — A vigorous plant with tall stems. *S.* heliotrope flushed violet with a smoky bluish sheen at the margins. *F.* deep mauve with a smoky bluish reflex; throat conspicuously striated yellow. *ten* 180 fr. *each* 20 fr.
- LEONATO** (Sir A. Hort 1922). — *S.* soft silvery lavender. *F.* same colour a little deeper white reticulated throat, very large flower. *ten* 170 fr. *each* 18 fr.
- LOUIS BEL** (Denis 1925). — It is quite unic for its dark colouring! *S.* very dark velvety pansy violet. *F.* deep blackish violet purple. *each* 30 fr.
- MADAME BOUSCANT** (Millet 1924). — *S.* aconit-violet. *F.* petunia-violet suffused with a rosy tint which give to the flower an exquisite soft tone of a rosy mauve. *ten* 230 fr. *each* 25 fr.
- MAJESTIC** (Bliss 1924). — Very fine Dominion's seedling. Very large flowers. *S.* lavender mauve lighted bronze at the base. *F.* spreading, of very rich velvety purple raisin color with red brown reticulations at the haft. *ten* 230 fr. *each* 25 fr.
- MARJORIE TINLEY** (Perry 1923). — *S.* pale lavender blue. *F.* little darker same color. Height 3 1/2 ft. *each* 25 fr.
- MAROUF** (Millet 1926). — *S.* greyish-rose with lilac overlaid. *F.* light amaranth-red on the center, washing off to lavender at the margins. A very large flower. Height 3 feet. *ten* 180 fr. *each* 20 fr.
- MICHELINE CHARRAIRE** (Denis 1924). — Pure white, with golden yellow reticulation at the throat. Rigid stems, good shaped flower. Variety of merit. *ten* 230 fr. *each* 25 fr.
- MISTRESS H. F. BOWLES** (Perry 1923). — Distinct variety, unic colouring. *S.* brown shaded old gold. *F.* brick red. Vigorous and free flowering. Height 3 1/2 ft. *ten* 90 fr. *each* 10 fr.
- MISTRESS VALERIE WEST** (Bliss 1925). — This variety was announced as a Bruno improvement. Enormous flowers. *S.* tinged lavender bronze. *F.* very large purple red velvety dark brown. Height 2 1/2 ft. *each* 300 fr.
- MOA** (Bliss 1920). — Dominion's seedling. Very large flower. *S.* pure violet. *F.* broad, rounded, purple violet or pansy violet. Very vigorous variety. Height 3 1/2 ft. *ten* 280 fr. *each* 30 fr.
- MOTHER OF PEARL** (Sturt. 1921). — Pale bluish lavender, of large size and fine substance, on tall stems. Height 5 ft. *each* 25 fr.
- PROSPERO** (Yeld 1920). — *S.* pale lavender flushed with yellow at the base. *F.* deep purple red paler at margin. Orange beard. Marked brown at the haft. Very vigorous, height 4 ft. *ten* 36 fr. *each* 4 fr.
- RIALGAR** (Sturtevant 1924). — *S.* old golden yellow. *F.* brown-red a very showy free flowering variety. *ten* 110 fr. *each* 12 fr.
- ROMOLA** (Bliss 1924). — Very large flower. *S.* pale lilac tinged ivory white at the base. *F.* velvety red violet. Very free flowering plant. Branched stems. Height 3 1/2 ft. *ten* 280 fr. *each* 30 fr.
- SHALBRUZ** (Baker). — Beautiful self blue. *F.* horizontally spreading. Good variety. Height 2 1/2 ft. *ten* 180 fr. *each* 20 fr.
- SIMONE VAISSIÈRE** (Millet 1922). — *S.* silky white shaded sky blue. *F.* aniline blue, striped maroon at the haft. Early flowering. Tall stems. Very interesting variety. *ten* 55 fr. *each* 6 fr.
- SIR MICHAEL** (Yeld 1925). — *S.* light lavender blue. *F.* purple garnet clearer at the edges. One of the best Irises. Height 3 ft. *Stock limited.* *each* 250 fr.
- SOUVENIR DE LÆTITIA MICHAUD** (Millet 1923). — *S.* lobelia-blue shading off towards the edges to pale blue. *F.* same tone beautifully veined of yellow on the white ground of the haft. A grand flower. Height 4 ft. *ten* 180 fr. *each* 20 fr.
- SWAZII** (Bliss 1922). — Very nice variety from Dominion. *S.* violet blue. *F.* horizontally spreading velvety black violet. Magnificent colour. Height 3 ft. *each* 125 fr.
- TITAN** (Bliss 1924). — *S.* blue violet. *F.* purple violet, deeper at center: white reticulated throat. Very large flower. Height 3 ft. *each* 30 fr.
- TOCCATA** (Millet 1926). — A free growing plant issued from pallida with stiff well branched stems; flower of fair size. *S.* light Petunia-violet. *F.* deeper. The general effect of the flower is a reddish lilac tone. Height 3 1/2 ft. *ten* 180 fr. *each* 20 fr.

GENERAL LIST

	per ten francs	each		per ten francs	each
Balaruc (Denis)	36	» 4 »	Mademoiselle Schwartz (Denis 1916)	55	» 6 »
Black Prince (Perry 1900)	55	» 6 »	Marsh Marigold (Bliss 1919)	50	» 6 »
Blanc de Cachemire (<i>Kashmir White</i> , Foster 1913)	»	» 10 »	Mist. W. J. Fryer (Fryer 1919)	55	» 6 »
Bleuet (Sturt. 1915)	22	» 2 50	Monsieur Aymard (Denis 1911)	36	» 4 »
B. Y. Morriison (Sturt. 1918)	45	» 5 »	Neptune (Yeld 1916)	27	» 3 »
Cecil Minturn (Farr)	45	» 5 »	Ochracea-cœrulea (Denis 1919)	90	» 10 »
Colonel Candelot (Millet)	36	» 4 »	Oriflamme (Vilm. 1904)	100 for 200 fr.	22 » 2 50
Corrida (Millet)	36	» 4 »	Pallida Wm. Marshall (Perry 1913)	100 for 320 fr.	36 » 4 »
Cypriana superba	27	» 3 »	Parisiana (Vilm)	100 for 200 fr.	22 » 2 50
Dalila (Denis 1914)	22	» 2 50	Princesse Lonyay (Goos and Kœn.)	57	» 3 »
Daniel Lesueur (Denis)	27	» 3 »	Quaker Lady (Farr 1909)	27	» 3 »
Dimity (Bliss 1917)	22	» 2 50	Queen Caterina (Sturt. 1918)	90	» 10 »
Dusky Maid (Bliss 1919)	36	» 4 »	Rhein Nixe (Goos and Kœn, 1910)	100 for 200 fr.	22 » 2 50
E.-H. Jenkins (Bliss 1919)	45	» 5 »	Rheintraube (Goos and Kœn, 1917)	27	» 3 »
Eldorado (Vilm. 1910)	22	» 2 50	Seminole (Farr. 1920)	55	» 6 »
Fro (G. and K. 1910)	100 for 240 fr.	27 » 3 »	Shekinah (Sturt. 1918)	55	» 6 »
Isoline (Vilm. 1904)	100 for 200 fr.	22 » 2 50	Sherwin Wright (Koh, 1915)	31	» 3 50
Kochii vrai	100 for 240 fr.	27 » 3 »	Sindjkha (Sturt. 1918)	45	» 5 »
Lady Foster (Foster 1913)	100 for 240 fr.	27 » 3 »	Souvenir de Madame Gaudichau (Millet 1914)	100 for 320 fr.	36 » 4 »
La Neige (Verdier 1912)	22	» 2 50	Sweet Lavender (Bliss 1919)	90	» 10 »
Lent. A. Williamson (Will. 1918)	27	» 3 »	Troost (Denis 1908)	27	» 3 »
Lord of June (Yeld 1911)	100 for 240 fr.	27 » 3 »	White Queen (Queen Mary White)	100 for 240 fr.	27 » 3 »
Madame Cheri (Sturt. 1918)	36	» 4 »	Whiffenpoof (Sturt. 1918)	100 for 240 fr.	27 » 3 »
Madame Chobaut (Denis 1906)	100 for 320 fr.	36 » 4 »	Zouave (Vilm.)	22	» 2 50
Madame de Sévigné (Denis 1922)	27	» 3 »			



A view of one of our Irises fields, in full bloom, at our Petit-Vitry's Nurseries taken on May 28 th 1925

TWO IRIS PUMILA REMONTANTS (PERPETUAL)

This new race of Iris pumila, vigorous and quite hardy is blooming two times each year : one in spring, other at fall, as we have verified in our nurseries of Petit Vitry :

JEAN SIRET (André). — S. clear yellow. F. yellow striated and tinged violet. ten 36 fr. each 4 fr.

SOUVENIR DU LIEUTENANT X. DE CHAVAGNAC (André). — S. violet with bronze reflex. F. deep velvety violet striated cream, lilac throat. ten 22 fr. each 2 fr. 50

THE PAINTERS "ART SHADE" SET

or our Vitry's hybrids

Under this name we are offering a very free-flowering, hardy, vigorous and graceful type of Irises. Besides their great decorative value, they flower late into season, mostly after others bearded Irises. Of medium size, the flowers are of good texture, well placed on stems from 2 to 3 feet high. They are often of wavy outlines and the different shades of colours make an happy contrast. The more or less flat spreading falls are often gradually shaded and edged, this, giving quite an artistical appearance of its own, suggesting us to class this type under the name of « Art Shade ». The bright greenfoliage is quite disease resisting.

Certificate of Merit given to the race S. N. H. F., on June 10 th. 1926

New varieties raised by us, offered for the first time in 1930

S. Standards (Upper petals). — F. Falls (Lower petals).

- BARYE.** — *S.* pure yellow. *F.* flat spreading exquisitely veined brown-purple on lighter yellowish ground at the edge, blending gradually on the whole blade into light purplish-violet. Height 3 1/2 feet. *each* 75 fr.
- MIGNARD.** — A peerless almost self coloured Iris of great-daintiness. A soft delicate mauve with a white glistening very few faint brownish veinings at throat, beard orange. Height 3 feet. *each* 75 fr.
- PUGET.** — An almost indescribable flower very strange and distinct suggesting some of the most curious Orchids, this by the dark reddish-bronze etchings and veinings adorning widely the margin amber yellow ground, this lighter on the center the standards are yellowish-bronze, gracefully wavy. Height 2 1/2 feet. *each* 100 fr.
- RODIN.** — *S.* deep rich daffodil-yellow. *F.* of the same yellow with neat reticulations of bronzy-brown around the margin, the center lighter, setting of the beautiful veinings. A showy flower. Height 2 feet. *each* 75 fr.
- RUDE.** — *S.* pale buff flushed heliotrope. *F.* bright, intense royal-blue of peculiarly vivid hue, beard yellow. A very attractive plant. Height 2 1/2 feet. *each* 75 fr.
- SOUFFLOT.** — An exquisite opposition to the soft coloured "Mignard". *S.* a little wavy, bright shining golden yellow. *F.* yellow, hardly overlaid buff tinged pale blue, beard orange. the whole effect is bright luminous yellow. Height 3 feet. *each* 75 fr.

New varieties raised by us, offered for the first time in 1929

- DELAROCHE.** — *S.* dead-white very slightly sprinkled and lined of true lilac at base, style deep lilac. *F.* milky-white reticulated lilac near the throat. A most distinct and refined colouring. Height 3 feet. *each* 50 fr.
- GIRARDON.** — *S.* golden-yellow. *F.* reddish-garnet edged gold, throat yellow veined brown with a white blot at the throat. Height 3 feet. *each* 60 fr.
- NICOLAS POUSSIN.** — *S.* golden-yellow. *F.* ivory-white with brown reticulations at throat, beards orange coloured. Height 3 feet. *each* 50 fr.
- PIGALLE.** — The colour throughout is a delightful flax-blue contrasting strikingly with the tall orange beards, most graceful in shape and flowering with the greatest freedom. Height 3 feet. *each* 60 fr.
- VANLOO.** — An ideal tone of exquisite freshness. *S.* white very faintly suffused light mauve. *F.* soft mauve. Height 3 1/2 feet. *each* 50 fr.
- WATTEAU.** — *S.* bright daffodil-yellow. *F.* bordered of same yellow on a center of soft lilac mingled of very light buff, a splendid colouring showy and invaluable for groups. Height 3 1/2 feet. *each* 100 fr.

New varieties raised by us, offered for the first time in 1926, 1927 and 1928

- BASTIEN LEPAGE (1927).** — *S.* bright yellow. *F.* pure yellow tinted white on the center of each petal, light brown reticulated throat, orange beard. A bright coloured Iris. Height 2 1/2 ft. *each* 25 fr.
- CLÉMENT DUBUFFE (1928).** — A vigorous free-flowering variety *S.* celestial-blue *F.* lilaceous-lavender edged soft blue. An unusually ideal colouring. Height 3 feet. *each* 50 fr.
- COROT (1926).** — *S.* light sulphur-yellow or ivory shading to clear mauve. *F.* spreading reddish-violet edged canary-yellow; broad striated throat. Height 3 feet. *each* 40 fr.
- DETAILLE (1926)** — *S.* bright golden yellow. *F.* dark amaranth-red; throat yellow striated. Height 2 1/2 feet. *each* 25 fr.
- FROMENTIN (1927).** — *S.* coppery-yellow. *F.* of same colour with a bronzy tone stained lilaceous-rose in the center of each division, beard orange. A flower of fine shape with spreading falls. Height 2 1/2 ft. *each* 30 fr.
- GÉRICAUT (1928).** — *S.* dove-coloured tinted soft blue. *F.* flax-blue shaded and edged silvery-white spreading and of excellent shape; 2 1/2 feet high. *each* 50 fr.
- GREUZE (1928).** — *S.* bright yellow very lightly tinted bronze. *F.* of same hue slightly deeper. An exceedingly bright effective colouring. A free-growing plant, well branched stems 3 feet tall. *each* 30 fr.
- GUSTAVE COURBET (1927).** — *S.* bronzy-yellow. *F.* spreading clear lilac clouded white edged sulphur-yellow. A refined and pleasing colouring. Height 2 1/2 ft. *each* 40 fr.
- HORACE VERNET (1928).** — *S.* coppery-rose. *F.* spreading, bright lilaceous-blue; 2 1/2 feet high. *each* 40 fr.
- ISABEY (1928).** — Divisions slightly wavy of a splendid porcelain China blue colour. A variety of great freedom much recommendable for its graceful shape and its refined colour; 3 feet high. *each* 30 fr.
- J.-F. MILLET (1927).** — *S.* clear soft yellow. *F.* amaranth-red edged canary-yellow striated white on the center, brown reticulated throat on yellow-ground. Height 2 1/2 ft. *each* 20 fr.
- LHERMITTE (1926).** — *S.* pearl-grey shading to isabel at the base. *F.* reddish-violet washing gradually to lavender at the margins. Height 2 1/2 feet. *each* 20 fr.
- LOUIS DAVID (1928).** — *S.* dark yellow shaded copper. *F.* old-rose edged bronze. A most distinct and effective colouring. Height 3 feet. *each* 50 fr.
- MEISSONNIER (1926).** — *S.* golden yellow suffused bronze. *F.* spreading reddish-amaranth thinly margined golden yellow. Very late flowering. Height 2 1/2 feet. *each* 25 fr.
- ROSA BONHEUR (1926).** — Thin but strong straight well branched stems carrying 4 to 5 open blooms at the time. *S.* golden yellow sometimes shaded of light mauvy-lilac. *F.* almost horizontally reflexed light mauve edged old gold. Height 2 1/2 feet. *each* 20 fr.
- TROYON (1927).** — *S.* bronzy old gold. *F.* heliotrope washed and edged gold, brown striated throat on yellow ground, beard yellow. Height 2 1/2 ft. *each* 30 fr.

RICARDI'S HYBRID IRISES

Most of the Ricardi's hybrids have been raised by Mr. Denis. This group of Irises contains some remarkable varieties which do better in the dry and temperate climates. Around Paris they suffer more of moisture than cold. It is necessary to cover the plants with light-frame to preserve them from autumn and winter rains fall. They produce very tall stems and flowers of large size.

GASPARD DE BESSE (Denis). — *S.* bright velvety pansy-violet. *F.* blush-violet strongly washed of slaty bronze, throat striated maroon on old gold ground. Height 3 1/2 feet. each 10 fr.

LEVERRIER (Denis 1917). — *S.* ageratum blue; *F.* petunia violet spotted brownish blood red. Height 4 feet. ten 55 fr. each 6 fr.

MADAME DURRAND (Denis 1912). — *S.* greyish yellow shaded violet; *F.* light blue washed campanula violet margined bronze. Height 4 1/2 feet. ten 90 fr. each 10 fr.

MADMOISELLE JEANNE BEL (Denis). — A tall plant nearly 4 feet high with very large flowers. *S.* almost pure white. *F.* white with a very light azured sheen; throat and beard yellow. Strong stem. Height 4 feet. each 50 fr.

MADMOISELLE SUZANNE AUTISSIER (Denis 1914). — *S.* aniline blue; *F.* purplish violet; throat white spotted bronze. Height 3 1/2 feet. hundred 400 fr. ten 45 fr. each 5 fr.

MÉNÉTRIÉRIER (Denis 1921). — (Ricardi × Gracchus). Very large flower. *S.* yellow shaded terra-cota. *F.* bronzy yellow, throat yellow striped maroon. ten 90 fr. each 10 fr.

MONSIEUR HUBERT (Denis 1922). — *S.* an exquisite shade of Parma-violet, shading to brown at the base. *F.* rich lobelia-blue. ten 90 fr. each 10 fr.

MONSIEUR TRINIDAD (Denis). — Clear lilac mauve, self colour. ten 90 fr. each 10 fr.

POGOCYCLUS IRISES

The Pogocyclus Irises are hybrids derived from crosses between *Oncocyclus* (Suziana, Iberica, etc.) and *Pogoniris* (Bearded Irises), (*P. Pumila*). They contain remarkable and curious colouring.

The plants can be sent only when they are in period of rest, in August-September. It is important to lift the rhizomes after flowering and to keep them dry one or two months before replanting.

CONGRÈS (Cayeux 1926). — A variety of outstanding merit, quite hardy and vigorous; issued by crossing the very best Pogocyclus. *S.* broad, light vinous red, *F.* bordeaux red with a large throat striated garnet on yellow. Petals of good substance, very free-flowering and of long duration. Height 2 1/2 ft. each 12 francs

DORAK (Iberica × Cengialti) (Foster 1909). — *S.* violet-blue; *F.* purple-violet veined, reticulated and spotted brown, a net blotch black brown. each 8 fr.

GIRAN (Iberica × pallida) (Foster 1913). — *S.* and *F.* red crimson extra. each 15 fr.

ISMANLI (Iberica × pallida). — *S.* reddish-lilac with violet veining. *F.* reddish-violet with purple-violet veining; throat white with purple reticulations and a small dark violet blotch at the haft. Height 2 ft. each 15 fr.

Lady LILFORD (paradoxa × pallida) (Foster 1907). — *S.* purple violet, very large; *F.* blackish purple, black beard. Curious form. ten 45 fr. each 5 fr.

Monsieur STEICHEN (chamaeiris alba × Iberica) (Denis 1922). — Flowering the first of May. *S.* white shaded blue. *F.* ground grey isabelle paler on the edge, striped brown and spotted red wine, reticulated brown at the throat. Very distinct. Height 1 ft. ten 90 fr. each 10 fr.

Certificate of Merit S. N. H. F.

PARVAR (paradoxa × variegata). — *S.* black-violet, *F.* horizontally spreading, very dark violet with a velvety sheen, white at the haft on the clearer ground. each 15 fr.

SHIRIN (Iberica × pallida) (Foster 1913) — *S.* large soft violet purple thin veined deep violet. The lower petals are clear purple-violet. Throat reticulated white. each 10 fr.

ZWANENBURG (lutescens aurea × Suziana) (Denis). — *S.* greyish fawn, reticulated of pale violet. *F.* yellow reticulated of purple violet; yellow beard, large flowers. hundred 160 fr. ten 18 fr. each 2 fr.

Certificate of Merit S. N. H. F.

REGELIO-CYCLUS & REGELIA IRISES

HOOGIANA. This species from Turkestan is one of the finest of the Regelia class. The flowers of good size and fine shape are of a lovely shade of self soft pale blue on which stand out the yellow beard of the throat. Early flowering. Height 1 3/4 ft. hundred 250 fr. ten 27 fr. each 3 fr.

LEICHTLINI Barbe Bleue (Denis). — A most curious colouring difficult to describe, fawn-brown with violet-blue at the apex, bluish beard. Height 1 3/4 ft. each 10 fr.

STOLONIFERA. — A distinct colouring in the way of Leichtlini Barbe Bleue, bronzy, blue and rose. Height 1 3/4 ft. ten 55 fr. each 6 fr.

SUZIANA. — The strange and well known "Mourning Iris". Very large flowers, greyish with strong intricate brown-black veining and dots much remarked at the shows. ten 18 fr. each 2 fr.

CONDITIONS OF SALE

Advice. — All plants are offered subject to being unsold on receipt of order.

Address. — Customers are requested to transmit orders clearly giving full names and address as well as the nearest railway station.

Carriage. — The prices of the present list are for plants taken here at our nurseries.

Packing and carriage are at customers charge and the goods travel at buyers' risks. Shipment by parcel post will be made only when specified, in this case Special Permit will have to be obtained from the F. H. B.

Payments. — Our prices are quoted in effective francs. All invoices are strictly nett. We beg our customers to settle by check on Paris (drawn in preference on the Comptoir National d'Escompte, 14, rue Bergère), and not by check payable in U. S. A.,

England and others Foreign places. Cash will have to be included with all orders.

Application of prices. — Not less than 25 plants of the same variety ordered at once are charged at the 100 rate and not less than 10 at the 10 rate.

We give no warranty, express or implied and we will not be in any way responsible for the result of planted roots we sent out. We guarantee all varieties to be true to name. Complaints and claims about the quality of the goods cannot be entertained unless made immediately upon receipt of same.

SPECIAL NOTICE FOR AMERICAN CUSTOMERS

A Permit from the F. H. B. (with special shipping tags obtained from same) will have to be sent with every American order.