

Maple Valley Iris Gardens



MATULA

Mrs. C. G. Whiting == Mapleton, Iowa

1939



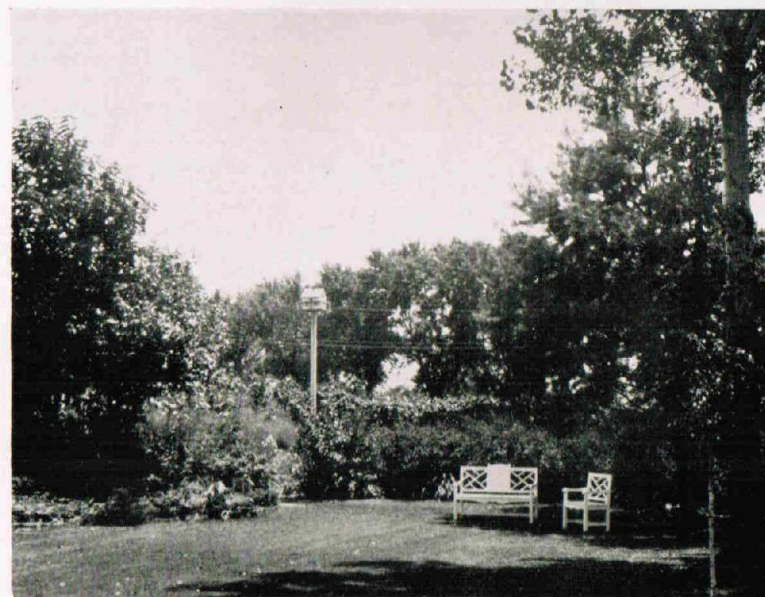
ELSA SASS

You Are Most Cordially Invited
To Visit

Maple Valley Iris Gardens

824 Courtright Street

Mapleton, Iowa



Welcome to Maple Valley Iris Gardens

Mapleton Is Located on Paved Highway 141, 40 Miles Southeast of Sioux City and 150 Miles Northwest of Des Moines, and on No. 35, About 90 Miles North of Council Bluffs.

GREETINGS--for 1939

This now seems like an Open Letter to many very good friends. Your response has been so friendly—so appreciative—that we wish we could print all of your letters. But if we did there would be room for little else in the catalog. Your attitude makes business a real pleasure for us, and we thank you most sincerely.

We have some new pictures this year, made from kodachromes taken by us in our garden. They are not perfect but we believe they will give you a very fair idea of some of the newer irises. It is impossible by any description or even picture to show the true beauty of a flower. We can only approach an idea of the exquisite delicacy and freshness of the flower itself. And yet we have seen some pictures and some descriptions—so elaborately overdone—that they conjure up in our minds, visions that are more gorgeous than any flower has a right to be. If we let ourselves believe in them we are simply carried away. Neither our pictures nor our descriptions are that kind. We try not to be too "heartily in our approbation and lavish in our praise" as Mr. Schwab puts it. We base our catalog descriptions on our own garden notes—so they change somewhat from year to year—and we try to tell how the flowers look to us. Very rarely we list a variety that has not yet bloomed here but we acknowledge this carefully, and give the originator credit for the description. Other very important items beside color and size are also given—such as substance, branching, hardiness and behavior of plant and bloom. No iris, no matter how large and beautiful it may be, is of garden value unless it has good growing and blooming habits. We are extremely careful in our records of Awards. No doubt there are some good irises that do not get such recognition even though they deserve it, but competition is very keen and those that do receive Awards must be outstanding. So we think they are important.

So many people have written us of their appreciation of the A. I. S. ratings in our catalog that we are using them again this year. When five or more A. I. S. judges send in ratings on a new iris in one year, the average of these is published in the A. I. S. bulletin. This is a tentative rating which may change in succeeding years until twenty or more judges rate it in a given year, when the average of all these becomes the permanent rating for that variety. This permanent rating can be changed only by a symposium. We consider an iris rated at 85 or over a very good iris and we do not highly recommend many that rate below this. Such great advances have been made in the breeding of irises in the past ten years that varieties much older than that have been superseded. Very few of the irises in our gardens have been in commerce more than ten years. This and the high ratings should assure you of our high standards.

TERMS OF SALE--Please Read Carefully Before Ordering

PLEASE ORDER EARLY—Orders are filled in rotation as received, beginning about July 1st, unless later date is specified.

SPECIAL 10% DISCOUNT on all orders over \$2.00 received before July 1st.

POSTAGE PREPAID on all orders of \$2.00 or more. For orders of less than \$2.00 add 15c for packing and postage.

WE DO NOT SUBSTITUTE WITHOUT YOUR PERMISSION. Please add a few second choices in collections to save time and correspondence.

TERMS—Cash with order—by check, draft or money order.

WE GUARANTEE OUR STOCK TO BE STRONG, HEALTHY AND TRUE TO NAME AND TO REACH YOU IN FIRST CLASS CONDITION.

GENEROUS EXTRAS WITH ALL ORDERS—ESPECIALLY EARLY ONES.

SPECIAL DISCOUNT TO A. I. S. MEMBERS. 20% discount to all members of the American Iris Society on orders of \$10.00 or more. State clearly on your order that you are a member.

JOIN THE AMERICAN IRIS SOCIETY! \$3.00 a year. We will send a special gift of \$1.00 worth of iris—your choice—for every new membership sent to us this year. Make checks to us or Secretary of American Iris Society. Four fine Bulletins a year.

What's *NEW* In Our Garden

Our 1939 Introductions

MARISHA (J. Sass-Whiting) M. L. 38 in. We picked this lovely pink blend from the Jacob Sass seedlings the first year it bloomed, and it has been greatly admired and coveted in our garden for two years. It is a beautiful Iris of soft, creamy yellow with standards heavily flushed with clear, light, pure pink and falls overlaid with the same pink tone. In effect it is a fresh and appealing pink enhanced by the soft yellow center. The blooms are large and pleasingly formed, with exceptional lasting qualities. The stalk is well branched and the plants very hardy and vigorous in growth. Because of its rather late season of bloom it has been missed by some of our visitors who were most anxious to see it. Several who saw it ordered plants for this season's delivery. We were unable to get a good color picture so will try to get one this year for our next catalog. A good stock enables us to introduce it at a popular price. **\$10.00**

MATULA (H. P. Sass 1939) M. L. 39 in. By special permission from Mr. H. P. Sass we are helping to introduce this wonderful new red and gold blend which he is listing for the first time this year. It has been very outstanding both here and in his garden for the past two years. Last year we were fortunate enough to get a very good color film of it and this year a reproduction from it graces the front of our catalog. We hope it will give you some idea of its extraordinary beauty. The color of the flower is magnificent, a brilliant medley of rich red and orange gold. The broad, well domed standards are of apricot buff flushed with Congo pink, the wide and semi-flaring falls are of deep Indian Lake, edged with buff. The edges of all the petals are delicately crimped after the manner of Midwest Gem, its full sister. This unique, crimped edge is something absolutely new in iris and it not only adds charm but substance and lasting qualities to the flower. The stalks are tall and beautifully branched, the plants very vigorous and hardy, blooming freely each year. **\$25.00**

ROYAL COACH (H. P. Sass 1939) M. 36 in. Another fine new Sass Iris which we have the privilege of jointly introducing. A beautiful yellow plicata described by Mr. Fishburn as "what the average Iris fancier imagines a yellow plicata ought to be. It has much more yellow and less stitching than most of this series." It is indeed a clean bright yellow with a neat brown stitching on the edges. The flowers are smoothly rounded and beautifully proportioned, the stalk is well branched and carries the flowers proudly. We think the name is very appropriate for it has grace, dignity and royal bearing. Like all Sass irises, it is hardy, prolific and free flowering. **\$10.00**

PRINCESS MARYGOLD (H. P. Sass-Whiting 1939) V. E. 36 in. Because she was the daughter of King Midas, we named her MARYGOLD. An entirely new color among the early blooming irises, this lovely pink and gold blend is most welcome. The beautifully domed and ruffled standards are of clear apricot buff, and the wide, semi-flaring falls are of the same shade, heavily overlaid with Corinthian pink. The form is most pleasing and the substance unusually fine. It blooms with the late intermediates and continues into the early tall bearded season. The stalks are well branched, carrying seven to nine flowers and buds without crowding. The plant is very sturdy and a very profuse bloomer. **\$5.00**

Other Fine New Varieties On Display Here

ARCADIAN (Williams 1939) A very large and glistening white iris with iridescent tints of lavender throughout. A fine, heavy gold beard provides accent. **\$7.50**

BALMUNG (H. P. Sass 1939) The shining sword of Siegfried! And this fine new yellow plicata is well worthy of the name. It is a large, well rounded flower and both standards and falls are yellow with rather heavy but clean plicata markings of brown. The bloom stalks are tall and well branched, the plants are hardy and strong, blooming freely. **\$25.00**

BLUE DIAMOND (Nich. 1938) E. M. 40 in. A light, clear self of almost true blue, silvery and sparkling, but deep enough in tone to give a positive effect in the garden. The flowers are large, the standards well domed and the falls flaring. The branching is low and wide, the plant vigorous. **\$7.50**

- BONSOR** (Con. 1938) M. 38 in. A deep, rich aniline blue iris from Nashville. A clean cut flower with excellent color and perfect grooming, remarkably free from purple or violet overtones. The branching is good and the plant hardy and prolific. **\$15.00**
- CAMELINA** (J. Sass 1939) M. 36 in. A new and lovely light yellow iris of daffodil coloring, fresh and appealing in form and color tone. The flowers are large and well carried on widely branched stems. It is hardy and floriferous. **\$20.00**
- CLINTON SYLVESTER** (Callis 1938) M. 40 in. This is described by its originator as a fine large white iris with distinct plicata markings of peach blossom pink. If it lives up to this description it will be a welcome addition to any garden. **\$10.00**
- CORONET** (D. Hall 1938) M. 42 in. A very lovely new color in iris—a soft, rosy beige with a golden tone. The flowers are large and well rounded, the finish smooth and lustrous. The bloom stalks are tall and widely branched, the plant vigorous, hardy and free blooming. **\$25.00**
- CRIMSON PETAL** (Norton 1938) M. 30 in. A fine newcomer among red irises is this one of deep, rich crimson tone. It is not a giant but is large enough and is so floriferous and colorful that it is well worth a place in any garden. It is perfectly hardy and well behaved in this climate, having come from Mt. Vernon, Iowa. **\$25.00**
- CRIMSON TIDE** (Nich. 1939) M. L. 42 in. This iris comes so well recommended that we anxiously await its first blooming here this spring. It is described as a large, deep red with arched and domed standards and velvety falls of deeper shade. Its color is accented by a bright orange beard and an orange glow at the upper haft. The tall stalk is widely branched, carrying many flowers. The plant is floriferous, hardy and vigorous. **\$15.00**
- ELSA SASS** (H. P. Sass 1939) M. 36 in. This is one of the most beautiful irises we have ever seen and we are most fortunate to have a plant that will bloom in our garden this spring. The color is an exquisitely clear, pure sulphur or Chalcidony yellow by Ridgeway. It is not just another light yellow, but a color never seen before in iris, a most ethereal tone with a faint greenish cast. We have tried to catch its illusive hue in our color plate—but when you see the flower you will say no picture could be as lovely. The flowers are medium large, of rounded, graceful form and perfect carriage. At last Mrs. Sass has chosen an iris to be named for her and it is a lovely one. **\$40.00**
- ETHIOP QUEEN** (Schreiner 1938) M. 34 in. A fitting name for this dark, glamorous beauty. The standards are of deep, black purple, the falls still darker and covered with a lustrous black sheen. The substance is most excellent, the color truly extraordinary. Hardy and free flowering. **\$15.00**
- GIRALDA** (H. P. Sass 1939) M. 60 in. This very tall iris is named for the Spanish bell tower, Giralda (pronounced he-ral-da) in Seville. It really grows nearly six feet tall and we have a picture of Mr. Hans Sass showing the tallest bloom towering above his head. The flowers are large and of a clear orchid pink. It will be especially interesting to breeders because of its great height. **\$15.00**
- MANAVU** (Thorup 1938) M. 38 in. A white and yellow bicolor of striking beauty. The standards are creamy white, well arched, the falls canary yellow and semi-flaring. The flowers are large and beautifully formed—an iris of great refinement and charm. **\$15.00**
- MATTERHORN** (J. Sass-Sch. 1938) M. 38 in. This is a wonderfully fine new white iris as chaste and pure as the snow on the mountain for which it is named. Of sparkling sheen, firm substance, beautifully rounded form and large size, its many flowers are proudly borne on tall, splendidly branched stalks. It is perfectly hardy and blooms freely. H. M. 1938. R. 90, 1938. **\$15.00**
- MISSOURI NIGHT** (Callis 1938) M. L. 30 in. A seedling of Baldwin and Blue Velvet this is described as a rich, dark velvety blue, a pure self of indigo coloring. **\$10.00**
- MOROCCO ROSE** (Loomis 1937) M. 36 in. A glowing pink iris that has attracted much attention. The flowers are very large, with standards of pure lustrous pink with yellow at the base and falls of deep rosaline pink. H. M. 1937. R. 89, 1938. **\$10.00**
- MOUNTAIN SNOW** (Kellogg 1937) M. 42 in. A grand new white iris of fine size, height, branching and poise. The broad standards are large and ruffled, the almost horizontal falls are broad both in haft and blade. The color is pure and the substance especially good, each bloom lasting several days. H. M. 1936. Per. R. 89, 1938. **\$20.00**

- ORANGE BRONZE** (Weed 1939) M. L. 34 in. An iridescent orange bronze blend, distinctive, unusual and attractive. It is a perfect self with standards, falls, style arms and beard all of the same smooth tone. **\$20.00**
- OREGON SUNSHINE** (Weed 1939) M. 38 in. A large, light yellow self which has not yet bloomed here but comes highly recommended. **\$20.00**
- PINK IMPERIAL** (Weed 1939) M. 52 in. Described by the originator as a real pink—tall and very fine. We look forward to its first blooming here this spring. **\$25.00**
- PRAIRIE SUNSET** (H. P. Sass 1939) M. 36 in. We are indeed proud to have a plant of Prairie Sunset in our garden. It is without doubt the loveliest color we have seen in an iris and all who see it seem to be of the same mind. It is an indescribably beautiful blend of pink and gold—so smoothly combined that it is a perfect self. By Ridgeway it is onion skin pink over vinaceous tawny—but it is really just the shade of a midsummer prairie sunset. Mr. Sass must have watched this color in the sky for many years and dreamed of an iris to match it, saving the name till he found one worthy of it; for the day of its first blooming it was named, a thing that has never happened before in the Sass gardens. Everyone who comes has marveled at its beauty, and it has earned the highest rating ever published. R. 95, 1938. We will not have any roots to sell this year, but we hope it will bloom so all of our visitors may see it.
- SALUTATION** (D. Hall 1938) E. 36 in. This is a sister seedling of Spring Prom but it blooms much earlier. It is a shade darker yellow with a more ruffled form. It has excellent substance and very good branching. **\$10.00**
- SIGNAL FIRES** (Egelberg 1939) M. 38 in. This is a lovely new iris that bloomed beautifully here last year and Mr. Egelberg is allowing us to help introduce it. The broad, firm standards are pale smoke gray, with a vinaceous flush. The falls are of deep red purple velvet, broad and flaring. The contrast in color is most charming and the iris is as pleasing as it is unusual. The colors are clear and fine and the name most appropriate. The tall stalk has excellent branching, and the plant has good growing and blooming habits. A flower that will be wanted by all who see it. **\$10.00**
- SIoux CITY** (Snyder 1939) M. 36 in. A pure, even toned self of rich heliotrope purple that retains its rare, delicate beauty in any light. The flower is large and well proportioned, with firm standards and semi-flaring falls. It was grown by Mr. W. S. Snyder of Sioux City and given an H. C. (highly commended) at the 1938 Iris Show there. **\$10.00**
- SUNNYMEADE** (Williams 1939) M. 36 in. A large, rich, creamy yellow with a deeper golden yellow heart. A strong upstanding flower from a sturdy, vigorous plant. It bloomed here last year and was much admired. A well groomed and lovely flower. **\$7.50**
- TRAUMEREI** (Williams 1938) M. 38 in. A fine, large, impressive flower of clear light blue. The falls are a bit darker than the standards, but both are light and pure in tone. This clear blue is a color we can never have enough of in our gardens, it is lovely in itself and compliments every other color. **\$5.00**
- WEST POINT** (Nich. 1939) M. L. 44 in. A grand new color in iris of brilliant, deep indigo blue. The well arched and domed standards are clear and pure in color, the wide, circular, flaring falls are slightly deeper in tone with a rich brown shading at the wide haft. The blooms are very large, the substance firm and lasting with a long period of bloom. The tall stalks are widely branched with many blooms open at once. The plant is hardy and floriferous. We are glad to be able to show this beautiful new iris in the year of its introduction. Col. J. C. Nicholls, who originated this fine new blue, is a graduate of West Point—forty years ago he tells us—and no doubt he has been saving this name for an iris that he considered worthy of it. He said, "I thought the iris good or I never would have given it the name, for we are all right foolish about West Point." **\$15.00**
- WHITE GODDESS** (Nesmith 1936) M. 40 in. Large, glistening white flowers of beautiful form. The standards are large and well domed, the falls gracefully arched and flaring. The color is pure and fine—even the throat and style branched are pure white, the beard light yellow. H. M. 1936. Per. R. 90, 1938. **\$10.00**
- WHITE VALOR** (Nich. 1938) M. 42 in. A fine, large, pure white iris with beautifully domed standards and wide spreading falls. A white beard and clear unmarked haft make this a true white self. The tall stalks are widely branched, the blooms of firm and lasting substance. The plants are vigorous and liberal with bloom. See Bulletin 67, p. 34. **\$6.00**

Carefully Selected List of Tall Bearded Irises

EACH YEAR WE BECOME MORE CRITICAL IN OUR SELECTIONS. Only the finest and best behaved varieties are retained in our gardens.

THE NAME OF THE ORIGINATOR AND THE DATE OF INTRODUCTION are given after each variety name. We like to know where our irises come from and how long they have been in commerce. Don't you?

THE SEASON OF BLOOM is shown by V. E., very early; E., early; M., midseason; L., late. HEIGHT OF BLOOM is given in inches.

AWARDS. American Iris Society Awards are—H. M., Honorable Mention given to a new Iris and A. M., Award of Merit given to an outstanding variety after it has proved its worth. The Dykes Medal is the highest award an iris may receive and is given each year by the Iris Society of England to the best iris chosen in England, in France and in America. In America an iris must have been in commerce four years to be eligible for the Dykes Medal. It is chosen by the judges and the Committee of Awards of the A. I. S. C. M. indicates Certificate of Merit in France, and S. M., Silver Medal in England. Especially outstanding foreign irises are given A. M. by the American Iris Society. The Roman Gold Medal was awarded for the first time in 1938 to the most outstanding iris from outside of Italy submitted for trial at Rome.

RATINGS. Per. R. indicates the permanent rating of the American Iris Society, which is the average of the ratings sent in by twenty or more accredited judges in any one year, the date following. R. indicates the tentative rating, the average of any number of ratings from five to twenty in one year. This rating is subject to change until at least twenty judges rate it in a given year.

ALICE HARDING (Cayeux 1933) M. 40 in. A soft toned primrose yellow iris of unusual grace and charm. Its large, full, beautifully rounded flowers present a fresh garden effect throughout the entire blooming season. The stalks are tall, sturdy and well branched, the plant perfectly hardy and free flowering. Dykes Medal, France, 1933. A. M., 1937. Per. R. 90, 1938. This is a good record.
\$1.50, 3 for \$3.00

ALINE (Stern 1932) M. L. 38 in. A very lovely, almost flax blue iris from England. Its smooth satiny texture, well rounded form and clear coloring endear it to everyone. It blooms freely here and is a strong vigorous grower. A. M., England, 1932. R. 89, 1938. \$2.00, 3 for \$5.00

ALTA CALIFORNIA (M. M. 1931) M. L. 46 in. A brilliant deep yellow iris of medium size on very tall, high branched stalks. It is reasonably hardy here and very much in demand. A grand dark yellow for the back of the border. H. M. 1936. R. 86, 1936. 50c, 3 for \$1.00

AMENTI (H. P. Sass 1936) M. L. 36 in. A clear fresh blend of pale gold and violet mauve, whose large, ruffled flowers are well arranged on the stalk. These subtle blends are most effective planted in the foreground near pale yellows or lavender blues. The plant is hardy, vigorous in growth and floriferous. R. 86, 1938. \$1.00, 3 for \$2.00

AMIGO (Williamson 1934) Neither very large nor very tall, this delightful pansy colored iris is a favorite everywhere. The standards are clear light blue violet and the falls are deep velvety violet purple with a distinct light violet edge. Hardy and prolific, blooming freely. H. M. 1936. Per. R. 90, 1938. \$3.00

AMITOLA (H. P. Sass 1936) M. L. 38 in. A large pink and gold blend of excellent form and unusually heavy substance. A seedling of Rameses, it is larger, pinker and more ruffled. The plants bloom freely and are perfectly hardy and vigorous. Per. R. 88, 1938. \$2.00, 3 for \$5.00

ANGELUS (Egelberg 1937) M. L. 34 in. A very fine new pink that has earned much favorable comment wherever shown. The flowers are especially large and full, the color fresh, clear and very lovely. The broad well domed standards are pure orchid pink and the wide, rounded falls are of similar tone, with a sheen of iridescent lavender. Strong growing, well branched and hardy, Angelus is a most welcome addition to our gardens. H. M. 1938. R. 90, 1938. \$10.00

ANITRA (H. P. Sass 1936) L. 36 in. A very beautiful clear cerulean blue self with a pearly glow that adds to its exquisite coloring. Large perfectly formed flowers with wide flaring falls are in good proportion to the well branched stalk. One of the finest of the new blues, a great advance in color, texture and substance. The plant is so vigorous and prolific that the price has become much more reasonable this year. H. M. 1937. R. 90, 1938. \$5.00

APRICOT GLOW (Wiesner 1937) M. 36 in. A fresh, smooth blend of creamy pink and apricot tones. It is not a large iris but its delicious coloring makes it a joy in the border especially among the columbines. It is a most pleasing cut flower and is exquisite arranged with such blues as Aline. It is so prolific and free blooming that a plant soon makes a mass of color. R. 83, 1938.

\$1.00, 3 for \$2.00

ASHTORETH (Beudry 1932) M. 36 in. A very good low priced yellow self of excellent form and substance. The flowers are quite large and the color deep and clear. Not well enough known for so good a hardy yellow. R. 85, 1936. 50c

AT DAWNING (Kirkland 1935) M. 36 in. There is no other iris even similar to this lovely pink amoena. Amoena means pleasing and At Dawning is especially so with its clear creamy white standards softly flushed with pink and its wide flaring falls of arbutus coloring. The large beautifully formed flowers are gracefully carried on the tall, well branched stalks and the whole plant is most satisfactory in hardiness and growth. H. M. 1936. A. M. 1938. Per. R. 88, 1937. \$3.00

AVONDALE (H. P. Sass 1934) M. 38 in. A rich deep red iris like very ripe strawberries in color. The coppery gold of the heart and crests makes it glow like a lighted lamp. It is hardy and free blooming but not very prolific. A real beauty in any garden. H. M., 1936. Per. R. 89, 1937. \$1.00

BALLET GIRL (H. P. Sass-Sch. 1935) M. 36 in. A fresh and dainty flower of almost pure crabapple pink coloring, with the poise and grace of a dancing girl. It looks fragile and delicate, but in reality lasts well in any kind of weather. It grows well and blooms freely. Per. R. 88, 1938. \$2.00

BARWOOD (Williams 1936) M. 40 in. A tall and stately iris of excellent form and rich coloring. The standards are clear rose red and the falls deep red toward maroon. A sturdy grower with plenty of bloom. This good iris has been somewhat overlooked. \$2.00

BELMONT (Williams 1938) A wonderfully clear blue iris that will find many admirers as soon as it becomes better known. It is a shade darker than Waverly and of an even purer blue. The large, beautifully frilled flowers have wide semilarfing falls. The stalk is tall and well branched, the plant sturdy, generous with bloom. Not yet rated. \$6.00

BEOTIE (Cay. 1932) M. 36 in. An odd but intriguing blend of pearl gray and blue, so unusual and so smoothly blended that one does not forget it. The large, full, beautifully formed flowers are most artistically carried. The plants are hardy as are most of the French introductions, and bloom freely. R. 84, 1937.

50c, 3 for \$1.00

BEOWULF (Schreiner 1936) E. M. 22 in. A rich combination of red and brown, a larger and more velvety Grace Sturtevant, with better form. Should be placed at the front of a border as it is not tall but quite well branched. It blooms freely on strong plants. Per. R. 86, 1938. \$3.00

BLACK WINGS (Kirk. 1931) M. 36 in. A well named beauty of midnight blue coloring. One of the most popular irises in any garden. It has excellent form, growth and blooming habits. H. M. 1931. A. M. 1933. R. 88, 1937. 50c

BLAZING STAR (Nicholls 1934) M. 38 in. A very good rich yellow that made such a good showing in our garden last year that many visitors asked about the new yellow. The flowers are large and well formed, the branching good and the growth excellent. One of the very best medium priced large yellow irises. 50c

BLITHESOME (Connell 1935) E. M. 40 in. A warm creamy white with falls heavily overlaid with yellow, giving the effect of a yellow bicolor. Its excellent form and branching together with its unusually heavy substance make it a most dependable early light yellow. The plants are especially strong and hardy. Per. R. 87, 1937. \$2.00, 3 for \$5.00

BLUE DANUBE (Meyer 1932) M. 32 in. England has sent us some very good blue irises and this is one of them. It is a medium tone of blue and quite pure in coloring, with a smooth, fine texture and pleasing form. The stalk is symmetrically branched and the plants perfectly hardy and free flowering, those imported from England blooming normally the following spring. Not yet rated in America. \$5.00

BLUE PETER (White 1936) M. 42 in. One of the richest of the very dark irises and very blue in tone, even brilliant. The tall stalks have three well spaced branches on which to carry the large beautifully formed flowers. The beard is dark blue tipped with orange, and there is no white visible in the center of the flower nor any fading of color toward the edges. It seems to adapt itself well to our climate. R. 88, 1938. \$3.00

BLUE TRIUMPH (Grinter 1934) M. L. 42 in. A clear pure light blue with silvery tones and lovely, flaring falls. The substance is unusually good which is most important for a late blooming iris as they must often encounter hot winds. The large broad flowers are well placed on the tall stems and the plant is sturdy and reliable, blooming freely. A grand light blue which is now reasonably priced. H. M. 1933. A. M. 1936. Per. R. 91, 1936. \$1.50, 3 for \$3.50

BRUNHILDE (Salbach 1934) M. 40 in. A wonderfully fine iris of pure deep violet blue coloring, a pure self with matching beard. The blooms are large and full and the stalk is amply branched to carry them. One of the finest irises to come out of the west and we hope it will prove entirely satisfactory in this climate. It grows vigorously, but has so far been a bit shy with bloom. H. M. 1936. A. M. 1937. Per. R. 92, 1936. \$2.50

BURNING BRONZE (Ayres 1934) A deep, rich, bronzy red iris of splendid color value in the garden. The stalks are widely branched and often carry four or five fine large blooms open at once. The plants are strong and hardy but do not increase as fast as some varieties. H. M. 1933. A. M. 1936. Per. R. 89, 1936. \$1.50

BYZANTIUM (Ayres 1934) M. 32 in. A medley of tan and gold with a touch of pure cerulian blue on the falls. A most pleasing iris, most effective when planted near a blue such as Indigo Bunting. The form and substance of the flower are good, the branching fair and the plant vigorous and free blooming. Per. R. 85, 1937. 75c, 3 for \$1.50

CABALLERO (Nicholls 1935) M. 45 in. A fine large red bicolor of most impressive color and form. The standards are a deep lavender red, well domed, the falls rosy red with a satiny texture. A very striking garden subject, tall and well branched. It is a sturdy grower and has good blooming habits. R. 90, 1937. \$1.00

CALIFORNIA GOLD (M. M. 1933) M. L. 42 in. A fine deep yellow flower of excellent form, height and branching. The flowers are large and broad with a burnished brass touch on the falls. It is hardy and free flowering here and a great favorite. H. M. 1936. A. M. 1937. Per. R. 91, 1936. \$2.50

CAPRI (Schreiner 1935) M. L. 30 in. A soft, warm yellow toned iris with a heavy overlay of taffy gold on the falls. The flowers are beautifully formed and the substance is unusually good, the stalk not very tall. A vigorous and free blooming iris that makes a fine clump in the foreground of a planting. Per. R. 84, 1938. \$3.00

CASQUE D'OR (J. Sass 1936) M. 34 in. A very striking and unusual iris of almost black and gold coloring. The ruffled standards are of deep old gold, the falls of velvety black maroon piped and lined with gold. Nothing even remotely like it except one of its parents, El Tovar, which has some of its richness but not quite its brilliancy. The flowers are medium large, the stalk quite well branched and the plant strong and hardy. H. M. 1937. R. 88, 1938. \$15.00

CHEERIO (Ayres 1934) M. 40 in. One of the most popular irises in the garden, brilliant and glowing. The standards are lustrous golden tan, the falls bright red velvet, perhaps the nearest to true red in iris coloring. The hardy, vigorous plants bloom freely every year. H. M. 1936. An A. M. in 1938 shows the sustained interest in this fine iris. Per. R. 88, 1936. \$1.50, 3 for \$3.50

CHINA MAID (Milliken 1936) M. L. 40 in. A very lovely pink blend of graceful form and carriage. The large, full blooms are an intriguing medley of pink, golden bronze and soft lilac, with sturdy substance and smooth even texture. Its behavior seems a bit variable so we cannot yet recommend its complete hardness here. H. M. 1938. R. 87, 1938. \$7.00

CHINOOK (Williams 1936) E. M. 42 in. Large, waxy white flowers are borne profusely during a long blooming season. The shapely blooms of clear pure white with a bright orange beard are gracefully carried. Pictured in A. I. S. Bulletin 66, page 82. It is hardy and of vigorous growth. R. 85, 1938. \$3.50

CHOSEN (White 1937) M. 50 in. Another California iris which has not yet bloomed for us but which has gained great popularity in the west. It has large clear yellow flowers of fine texture and firm substance. The tall stems are rigid and well branched. H. M. 1938. R. 90, 1938. \$18.50

CHRISTABEL (Lapham 1936) M. 40 in. A very brilliant new iris that has made enthusiastic friends everywhere. It is hard to describe—it is in effect a glowing coppery red—almost an Acajou red self with standards sparkling with a golden iridescence and falls overlaid with a black sheen. It is lighted by pure golden styles and heavy gold beard. It is one of the most striking of the new reds, proudly carried on tall well branched stalks. Its strong hardy growth and free blooming habits are greatly in its favor. We anticipate a great future for this iris. H. M. 1936. A. M. 1938. Per. R. 90, 1938. \$8.00

CHROMYLLA (Loomis 1931) M. 40 in. A very fine, large, chrome yellow self of real distinction and beauty. It holds its own well with many of the newer yellows. Its sturdy growth and prolific bloom recommend it highly. H. M. 1931. A. M. 1932. Per. R. 85, 1933. 50c

CININNATI (Ayres 1936) M. 42 in. A large, smooth, warm white iris of fine flaring form and stately carriage. It might be called a larger and taller Venus de Milo with excellent branching. Strong, hardy and floriferous. R. 88, 1938. \$1.50

CITY OF LINCOLN (H. P. Sass 1937) M. 40 in. The climax of many years of breeding for a large, tall, clear colored variegata, it is indeed a masterpiece in this field. The standards are of pure, bright golden yellow and the falls of clear, velvety red with a distinct golden edge. A real knockout. Strong and hardy in growth, it blooms almost too freely for its own good. H. M. 1937. Per. R. 90, 1938. \$20.00

CLARIBEL (J. Sass 1936) M. 40 in. A perfectly hardy and free blooming large white plicata at last. The beautifully formed flowers are wide and full with semi flaring falls, the color pure white edged with a stitching of clear medium toned blue. As fine a flower as one could wish with perfect grooming and a boon to those of us who cannot bloom San Francisco and Los Angeles freely each year. The stalks are tall and well branched, the growth most satisfying. H. M. 1936. R. 88, 1938. \$1.00

COLOSSUS (H. P. Sass 1931) M. 30 in. A most unusual iris—huge in size and of unique form, having very long, erect standards. It is of great interest to breeders. The color is a rich, dark blue purple. Something very different. \$1.50

COPPER LUSTRE (Kirkland 1934) M. 38 in. The latest Dykes Medal winner. An amazing blend of pink and gold—rubbed smooth as a polished copper bowl. Its iridescent and changing lustre is most fascinating. It blooms freely, the plant is hardy but not a fast increaser. H. M. 1935. A. M. 1937. Dykes Medal 1938. Per. R. 90, 1936. \$4.00

COPPER PIECE (Kellogg 1936) M. 34 in. A color gem that is difficult to describe but most interesting to every garden visitor. The individual blooms are not very large but beautifully formed and gracefully carried. Soft, coppery red with a strong flush of violet blue like a gas flame, the flower is further distinguished by an epaulette of burnished copper on the 'shoulders' of the falls. It grows and blooms freely here. H. M. 1936. Per. R. 88, 1937. \$6.50

CORALIE (Ayres 1932) M. 38 in. A lovely and unusual combination of color with standards of clear rose pink flushed with mauve and falls of glowing rose red. We find it most striking planted among light blues in partial shade. It is sturdy in growth, increasing readily and blooming freely. H. M. 1932. Dykes Medal 1933. R. 84, 1936. \$1.50

CORTEZ (Nesmith 1934) L. 38 in. A brilliantly blended variegata with standards of yellow tinged with rose and falls of velvety crimson purple. Strong and hardy but not a fast increaser here. H. M. 1933. Per. R. 89, 1938. \$11.00

CREOLE BELLE (Nicholls 1934) M. 36 in. A very rich and distinct Bishop's purple self of great charm and personality. The flowers are large and stately, the dark beard and haft intensifying the deep, rich coloring. The plant is vigorous and the stalks well branched. An outstanding iris in its class. H. M. 1936. Per. R. 90, 1936. \$1.00

CRIMSON PETAL (Norton 1938) M. 30 in. A rich dark red self of wonderful garden value. It has excellent form and good substance with semi-flaring velvety falls. The well branched stalks are of medium height, carrying many blooms. Raised at Mt. Vernon, Iowa, the plants are strong and hardy in the middle west. Very free blooming. Not yet rated. \$2.50

HERE'S AN IDEA!

From Iowa—Enclosed please find check for \$3.00 for an A. I. S. membership for Mrs. ——. I am giving it to her as a Christmas gift as I can think of nothing that would please her more.

From Mississippi—May I acknowledge the receipt of the fine shipment of irises. I am delighted with them and am sending you a picture of the garden in which they will grow. I hope you can see them sometime here in Natchez.

CROWN PRINCE (Klein 1932) M. 36 in. A rich and glowing blended variegata with standards of burnt orange and falls of red brown velvet, solid to the edge. Good growing habits. 50c

CRYSTAL BEAUTY (J. Sass 1935) M. 40 in. A very fine, large, pure white iris that is perfectly hardy and a strong grower. The full rounded blooms have a fragile look but really withstand much weather and retain their crystalline freshness. Try it with Pink Opal and Blue Monarch for a strikingly beautiful tall trio. H. M. 1936. Per. R. 88, 1936. \$1.00

DARK KNIGHT (Salbach 1934) L. 45 in. A very dark and rich mahogany red iris of striking beauty. A tall, proud flower of excellent form and branching. It seems fairly hardy and dependable here. H. M. 1936. Per. R. 88, 1937. \$1.00

DESERET (Thorup 1936) M. 40 in. A dashing variegata with bright yellow standards and falls brushed heavily with red. You either like it or you don't. Tall, well branched and a vigorous grower. H. M. 1937. Per. R. 85, 1938. \$1.50

DIRECTEUR PINELLE (Cayeux 1932) L. 42 in. A magnificent dark garnet red with a black lustre. Fine, large blooms on tall well branched stalks make this a most impressive iris. The plant is perfectly hardy but it blooms so heavily it cannot increase very fast. C. M., France, 1932. A. M. 1937. R. 89, 1938. \$2.50

DORE' (J. Sass) M. 37 in. This creamy white and yellow has the fresh and lovely coloring of a daffodil. It is pronounced 'do-ray' and means gilded. The standards are clear light yellow, the falls are creamy white, gilded with yellow at the edges. The plant is strong and blooms freely, the stalk is well branched. Per. R. 86, 1937. \$1.50

DOUGLAS (J. Sass 1932) M. 40 in. A fine large blend that has been somewhat overlooked. A medley of heliotrope and violet that is a beautiful study. The flowers are large and full, the stalk tall and well branched and the plant well behaved. R. 85, 1933. 50c

DYMIA (Shuber 1936) M. 38 in. A large, very dark purple self with a dark blue beard that harmonizes perfectly with the flower and intensifies its deep, rich coloring. Raised at Clinton, Iowa, it is strong, hardy and free flowering. H. M. 1937. Per. R. 87, 1938. \$1.50

EASTER MORN (Essig 1931) M. 42 in. The all but perfect white iris, tall, graceful, beautifully formed and wonderfully branched. But alas it does not always bloom in severe climates. When it does, however, it is superb. Worth trying. H. M. 1931. A. M. 1933. R. 89, 1936. 50c

E. B. WILLIAMSON (P. Cook 1937) M. 36 in. A glorious new iris of glowing coppery red tones, distinct and very beautiful. The flowers are large, of smooth texture, full rounded form and durable substance. The stalks are widely branched and the plant is perfectly hardy and free blooming. Winner of the first Roman Gold Medal in 1938. H. M. 1938. R. 91, 1938. \$15.00

ECLADOR (Cayeux 1932) M. L. 36 in. A fine late yellow iris from France. The broad ruffled standards are of deep butter yellow, the wide falls a shade deeper with a touch of brown veining at the haft. C. M. and Dykes Medal, France, 1932. A. M. 1936. R. 86, 1938. \$1.50

EILAH (Loomis 1935) M. 38 in. A large tall yellow of medium tone and unusually smooth texture and excellent substance. It is as large as Dykes but perfectly hardy and a free bloomer. H. M. 1937. Per. R. 87, 1937. \$2.00

ELECTRA (J. Sass-Sch. 1935) M. 38 in. An unusual and interesting plicata, white with a blue edge and a golden center. Strong and hardy, it blooms very freely. R. 88, 1937. \$1.00

ELKHART (Lapham 1937) L. 38 in. A new and brilliant iris—a glorified King Tut—larger and even more glowing. A grand combination of golden brown and deep, fiery chestnut red, its well rounded flowers are carried proudly on widely branched stalks. Coming from King Tut and Ethel Peckham, its hardiness is unquestioned, and its growth vigorous. Not yet rated. \$4.00

ELLA WINCHESTER (Grinter 1935) M. 38 in. A most refined and well groomed iris of rich, deep mahogany red, almost solid in color, even to a smooth dark haft. A beautifully finished flower, individual in form and coloring. It does not make huge rhizomes but is perfectly hardy and free flowering here. H. M. 1936. Per. R. 88, 1938. \$3.00

EL TOVAR (H. P. Sass 1933) L. 36 in. This iris is in a class by itself—a most unique and dusky blended variegata. The standards are honey yellow shaded with brown and the falls are deep blackish maroon velvet lined with yellow satin—reminding one of the rich cape of a Spanish grandee. The plant is vigorous and hardy and the stalks well branched. H. M. 1932. A. M. 1933. Per. R. 88, 1937. \$1.50

EROS (Mead-Reidel 1934) A smooth and creamy pink blend of exquisite coloring, almost a melon pink. It is a perfect self of clear even tone throughout, making it a lovely companion for light blue tones. The flowers are of medium size on tall high branched stalks, so it is more effective planted near the back of the border. We like it in partial shade near Blue Triumph or Blue Hill. H. M. 1934. A. M. 1936. Per. R. 88, 1936. 75c

ETHEL PECKHAM (Wmsn. 1932) M. 34 in. This deep glowing red iris is a great favorite in our garden. The flowers are full and rounded, it is almost a garnet self, but the velvety falls seem darker. It is a strong and vigorous grower and a very free bloomer. H. M. 1932. A. M. 1936. Per. R. 88, 1937. \$1.00

EXCLUSIVE (Grant 1935) M. 35 in. A most fascinating new iris of powder blue which holds its pearly freshness in any weather. The large, beautifully formed flowers are gracefully spaced on the widely branched stalks, never seeming crowded even when four or five blooms are open at once. The plant is perfectly hardy and blooms freely. H. M. 1937. Per. R. 90, 1938. \$6.00

FAR WEST (Klein. 1936) M. 40 in. A warm and mellow blend of salmon and golden sand, with a soft glow at the heart. Excellent form, finish, height and branching make this a good garden iris. It has sturdy plants with good growing and blooming habits. H. M. 1937. Per. R. 87, 1938. \$3.00

FIESTA (White 1936) M. 38 in. A gay and festive flower, appropriately named. The blooms are large and beautifully full formed, of golden copper flushed with mauve and sprinkled with gold dust. The plant seems vigorous and hardy, having bloomed here two years in succession. H. M. 1935. R. 87, 1938. \$8.00

GARDEN MAGIC (Grinter 1936) M. 40 in. A truly wonderful flower to which we go back again and again to marvel at its smooth warm beauty. The deep, rich tone of red is almost uniform in the whole flower, even to the crests and smooth unveined haft. It is not a purple red nor yet a bronze red but almost a pure maroon. The flower is beautifully formed and finished, the stalk tall and well branched. The plant is perfectly hardy and liberal with its bloom. H. M. 1937. R. 91, 1938. \$20.00

GENEVIEVE SEROUGE (Cay. 1932) M. 40 in. A subtle blend of soft pastel shades—tawny yellow, flushed with lilac and suffused with clear flax blue—a fascinating picture. The large ruffled flowers are gracefully carried on tall, well branched stalks. A vigorous grower and a profuse bloomer, it increases well. C. M., France, 1931. R. 88, 1936. 75c

GLORIOLE (Gage 1933) L. 42 in. A glistering, frosty light blue iris that attracts and holds the attention. The flowers are large and beautifully formed with firmly domed standards and lightly flaring falls. The substance of the bloom is unusually fine, the stalk tall, well branched and graceful. Although from a somewhat tender ancestry, it behaves well here and blooms abundantly. H. M. 1933. A. M. 1935. Per. R. 90, 1936. \$3.00

GOLDEN HELMET (J. Sass 1933) M. 35 in. This has always been a favorite in our garden because of its rich but softly blended colors and its distinct and charming form. The crispy ruffled standards are of tawny yellow richly shaded with buckthorn brown, the wide, velvet falls are of brilliant Morocco red striped with brown at the haft. It has twice been chosen by artists coming to the garden to paint. The stalk is not too tall, the branching is good and the flowers well carried. The plant is hardy and vigorous, the bloom most liberal. Per. R. 87, 1937. \$1.00

GOLDEN HIND (Chadburn 1934) M. 34 in. This golden beauty comes from England and is one of the most talked of irises in the world. A deep, rich, buttercup yellow self, it is the last word in pure coloring. It is of medium height, large size and unusually heavy substance. The plants are vigorous and hardy here, blooming freely and increasing well. Dykes Medal in England, 1934. A. M. 1937. Per. R. 90, 1938. This is a very good record. \$6.00

From Iowa—All my older irises have been given away to parks and I now have only new varieties from your lists. What a difference it makes!

From Nebraska—We read your catalog from cover to cover. Your giving the A. I. S. ratings is a big help. I wish to thank you for taking time out to answer my questions.
New A. I. S. Member.

GOLDEN LIGHT (H. P. Sass 1933) M. 36-40 in. This is not a new iris as irises go, but the many compliments paid to it in recent varietal notes, show its undiminished popularity. It is gay and lively—of warm gold, enriched by touches of coppery red at the edges of the crisply frilled petals. It is most effective planted in a clump by itself where it gleams like lighted candles. It grows easily, blooms profusely and increases rapidly. H. M. 1936. Per. R. 88, 1936. As a garden subject it would rate still higher. \$1.00

GOLDEN TREASURE (Schreiner 1936) M. 40 in. This is one of the loveliest irises in the garden, and an easy prize winner on the show bench. It is tall and stately, a creamy yellow self with a clear golden yellow heart. The large blooms are so well placed on the widely branched stalk that they never crowd even when four or five open at once. One of the best examples of four-way branching. The plant is strong and hardy, prolific and free flowering. H. M. 1936. A. M. 1938. Per. R. 90, 1937. \$7.50

GUDRUN (K. Dykes 1931) E. M. 36 in. An English iris that has become very popular in America. Its huge blooms are of pure gleaming white enlivened by a vivid gold beard. Because of its size and full rounded form it makes a most impressive show flower. It grows well and blooms freely here. Dykes Medal, England, 1932. A. M. 1936. Per. R. 88, 1937. 75c

HAPPY DAYS (Mitchell 1934) E. M. 40 in. This iris stands out as one of the largest and finest of the light yellows. The immense flowers are of clear Pinard yellow and are carried on tall, well branched stalks. We find it quite reliable here, it grows strongly, blooms freely and increases well. H. M. 1935. A. M. 1937. Per. R. 92, 1936. \$2.00

IMPERIAL BLUSH (H. P. Sass 1933) M. L. 40 in. Still one of the very best orchid pink irises. A perfect self of pure, clear coloring, the large ruffled flowers are borne profusely on tall stalks. The branching is a bit high which makes it ideal for the back of a group planting. Try it with clear yellows and light blues. Strong hardy plants with good growing and blooming habits. H. M. 1936. Per. R. 87, 1937. 50c, 3 for \$1.00

INDIAN HILLS (Grant 1937) M. E. 36 in. A rich wine purple iris—a pure self of wonderful garden value. The blooms are large, of good substance and fine oval form. It grows, blooms and increases well. Very effective with clear pure white irises. R. 88, 1938.

\$3.00, 2 for \$5.00

IRIS CITY (Williams 1938) M. 38 in. This is an intense, glowing royal purple self of pure even coloring throughout. The large satiny textured blooms are well carried on tall widely branched stalks. A most outstanding new iris of unquestioned hardiness and excellent growth. Not yet rated. \$10.00

JASMANIA (Ayres 1935) M. 40 in. A very distinguished beauty among the yellows, much admired by everyone. It makes a beautiful garden clump, the large well rounded flowers giving the effect of clear, soft medium yellow. On close inspection we find a touch of light blue at the tip of the beard which gives it individuality and charm. Perfectly hardy and free blooming. H. M. 1936. A. M. 1937. Per. R. 91, 1937. \$9.00

JEAN CAYEUX (Cay. 1931) L. 36 in. One of the most attractive and popular flowers in the garden is 'Jean'. Very French too in her cafe au lait coloring of creamy coffee tones. A faint blue blaze of blue on each fall gives further appeal. The lovely, lustrous flowers are of medium size but perfect rounded form, well placed on a nicely branched stalk. The plants are strong and vigorous, blooming and increasing abundantly. Dykes Medal, France, 1931. A. M. 1936. Per. R. 89, 1937. 75c

JEB STUART (Wash. 1932) M. L. 40 in. A velvety red brown iris of intense coloring and excellent grooming. The broad falls are smooth and almost unveined at the haft, the stalk well branched. The plants are vigorous and free flowering. H. M. 1933. A. M. 1935. Per. R. 88, 1936. \$1.50

JELLOWAY (Parker 1936) M. L. 42 in. A deep pure yellow of nice oval form and good branching. The color is pure lemon chrome with no white at the center. It seems hardy and bloomed well here on a first year plant. H. M. 1937. Per. R. 89, 1939. \$5.00

JERRY (Lapham 1933) M. 38 in. A pure ruby red iris that adds charm to any planting. The flowers are of medium size, perfectly groomed and jauntily carried on well branched stalks. The garden effect is a rich glowing red, most lovely among light yellows. It is hardy and a profuse bloomer, increasing rapidly. Per. R. 86, 1937. 50c

JOYCETTE (J. Sass 1932) M. 42 in. An iris that seems to increase in popularity every year. It is a deep, intense crimson purple, almost a self, a most pleasing garden subject in every way. Most irises are rated a little lower each year as new ones come out in competition but Joycette rose from 88 in 1933 to its permanent rating of 90 in 1937. It takes a good iris to make a record like this. It is tall and well branched, strong, hardy and dependable in bloom. H. M. 1932. A. M. 1936. Per. R. 90, 1937. \$1.00, 3 for \$2.50

JUBILESTA (Grinter 1937) M. 38 in. A most ethereal and lovely iris of pure light lemon yellow. It is a perfect self—styles, haft, beard and all of the same clear tone. It is not big and bold as are so many of the new yellows, so it is at first unnoticed by some visitors. But it has an exquisite charm when studied closely, and is most graceful and picturesque when used as a cut flower. Its texture is like silk but it neither fades nor wilts in the sun. It is perfectly hardy here, free blooming and prolific. \$7.50

JUNALUSKA (Kirkland 1934) M. 40 in. A really gorgeous combination of gold, copper and deep red, a man's iris. The standards are copper suffused with rose and threaded with gold, the falls are of rich and sumptuous red velvet. The large blooms are carried gracefully on tall, widely branched stalks and last well throughout the season. H. M. 1936. A. M. 1937. Per. R. 91, 1936. Second choice for Dykes Medal 1938. \$2.00, 3 for \$5.00

KALINGA (Klein, 1934) M. L. 44 in. A beautiful cream colored iris of great refinement. The large well rounded flowers are carried with perfect poise, a most appealing flower. It seems quite hardy here although not as free blooming as we might wish. H. M. 1936. Per. R. 88, 1937. \$1.00, 3 for \$2.00

KHORASAN (H. P. Sass 1937) M. 36 in. A large variegata of Dominion form and heritage. The firm, well domed standards are dull gold and the widely flaring falls are nearly auburn in color. It is a distinct and unusual iris, with individual form and good branching. The plants are strong and bloom freely. R. 87, 1938. \$2.00, 3 for \$5.00

KIRKWOOD (Williams 1937) M. 38 in. A deep mahogany red self or near self that makes an excellent impression on visitors. It is large, smoothly colored and gracefully carried. The plant growth is good and the bloom abundant. R. 86, 1938. \$7.50

K. V. AYRES (Ayres 1932) M. 40 in. A most delectable blend of creamy coffee and rosy lavender tones, very appealing to those who like soft, subtle effects. The blooms are large and symmetrical, the branching good and the plant habits excellent. H. M. 1933. R. 86, 1937. \$1.00, 3 for \$2.00

LADY PARAMOUNT (White 1932) E. M. 44 in. A tall and stately beauty is the Lady Paramount. The large, smoothly finished flowers of clear primrose yellow are proudly carried, lasting well through early to midseason. It has proved to be a perfectly dependable bloomer here for several years. H. M. 1932. A. M. 1936. Per. R. 91, 1936. \$1.50

LA FERIA (Williams 1937) M. 36 in. A captivating blend of most unique coloring—soft French gray and lavender. Its cool and refreshing tones are restful and appealing. The sturdy plants produce large, gracefully formed flowers of good substance on tall, well branched stalks. R. 85, 1938. \$4.00

LILAMANI (J. Sass 1938) M. 38 in. A new dark beauty that will create a sensation when it becomes better known. It is a rich, velvety, violet self with a black lustre. The flowers are large and full with excellent substance; the stalks are tall and widely branched. The plant growth is exceptionally good and the bloom dependable. R. 91, 1938. \$7.50

LUCRE (White 1936) M. 40 in. A very deep, rich yellow iris—brilliant in tone and smoothly colored. The tall slender stems carry the blooms well. The plant seems hardy here, blooms freely and increases rapidly. \$3.00

From Texas—All your Irises bloomed very well for us here this year. We believe that roots matured in your locality are especially well adapted to the climate of the south west. Am sending another quite large order. We appreciate the excellent quality of your stock. The fall bloomers you sent last year in October bloomed for us in January.
Member A. I. S.

From Delaware—It is really a pleasure to deal with you, and I cannot tell you how much I appreciate the iris. I am looking forward to next spring to see my new plants bloom. Will you keep me in mind and if you find anything next year that you feel is outstanding, let me know?
Member A. I. S.

LUCREZIA BORI (Schreiner 1935) M. L. 40 in. A large, late blooming yellow, a seedling of the famous W. R. Dykes. Its standards are well domed and ruffled, and of clear primrose yellow; its falls are long and a bit deeper in tone. H. M. 1936. Per. R. 89, 1936. \$3.50

MAGI (Sturtevant 1933) E. 36 in. A fresh and charming blend of rosy mauve and gold. In form, substance and texture it is most pleasing, having that indefinable grace of the Sturtevant originations. It is hardy and very free flowering. R. 85, 1936. 50c, 3 for \$1.00

MAID OF ASTOLAT (J. Sass 1936) L. 45 in. One of the finest of the new, hardy plicatas. The blooms are large and beautifully formed, pure white distinctly marked with blue on the petal edges. Very vigorous, well branched, and free blooming. R. 89, 1938. \$2.00

MALUSKA (Nesmith 1933) L. 40 in. A very dark, rich red iris, almost black and velvety in texture. It is tall, well branched and of excellent substance. The growth is strong, the bloom very free. H. M. 1934. Per. R. 87, 1937. \$1.00, 3 for \$2.00

MARCO POLO (Schreiner 1936) M. 36 in. A fine red bicolor that causes much favorable comment. The crisp standards are of lustrous, bronzy gold flushed with red and the wide, velvety falls are of rich crimson. The smooth pure colorings give it a splendid garden effect. It is large, well branched and a prolific grower and bloomer. Per. R. 88, 1938. \$4.50

MARQUITA (Cay. 1931) M. 38 in. Still a novelty, because there is nothing else like it, it never fails to bring pleased and enthusiastic comment from garden visitors. The flowers are very large—the full, rounded standards are of clear creamy yellow, the falls are the same but solidly lined with ruby red. It must be seen to be appreciated, as no description does it justice. C. M., France, 1931. A. M., 1936. Per. R. 88, 1937. \$1.00, 3 for \$2.50

MARY GEDDES (Stahl-Wash. 1931) M. L. 36 in. A distinctive blend of gold, salmon and rosy red. The substance and lasting power of the flower are unusually good, the plant sturdy and floriferous. H. M. 1930. A. M. 1933. Dykes Medal 1936. R. 90, 1937. 50c, 3 for \$1.00

From Missouri—(where it is said they have to be shown.) I am enclosing another order for iris. Those received earlier this summer were grand. I was more than pleased with the strong healthy roots and the extras sent. I will surely win some blue ribbons next year!

MATA HARI (Nicholls 1937) V. L. 48 in. This is a most outstanding and superior dark blue purple iris, a perfect self of deep rich color. The standards are firmly domed and the falls flare widely but not stiffly. It blooms very late in the season but its wonderful substance withstands hot winds well and the color does not fade. It is so late few judges see it so it has not yet been rated. \$10.00

MAYA (Wash. 1934) M. 40 in. A brilliant and showy iris with shapely standards of strawberry red and falls of the same tone, blended with copper and gold at the throat. Tall, well branched and vigorous in growth. H. M. 1935. Per. R. 89, 1937. \$7.50

MEDLEY (Sturt-Kell. 1935) M. 40 in. A lovely pink and gold blend similar to Zaharoon but pinker and of much better substance. A very delightful iris in the garden or for cutting. Hardy and very free flowering. 50c, 3 for \$1.00

MELDORIC (Ayres 1930) M. L. 40 in. A very popular blue black iris of large size, excellent form and heavy substance. It is a pure self of intense dark coloring, enlivened by a brilliant orange beard. Tall, well branched and vigorous in growth. H. M. 1935. Per. R. 88, 1933. 50c, 3 for \$1.00

MIDWEST GEM (H. P. Sass 1937) M. L. 36 in. This perfectly luscious blend is a great favorite in our garden. Soft, creamy yellow, almost buff tones with a flush of pure light pink make it good enough to eat. Both standards and falls are wide and full with the most fascinating crimped edges. Our color plate of Midwest Gem is most satisfactory. We were delighted with the soft blending of colors—almost true to the flower itself, and it is a difficult thing, this trying to bring a flower to you on paper. In some lights it seems to have a warmer yellow tone than the picture, but does an iris ever look the same in different lights? But Midwest Gem is lovely—any way you look at it. Texture and substance are unusually fine, each bloom lasting several days. The strong, hardy plants bloom freely. H. M. 1937. Per. R. 90, 1938. \$10.00



MISSOURI

MICHELANGELO (Weed 1936) M. 43 in. A distinct new color in irises, a dark, vinaceous gray self, most attractive and interesting. It is not only unusual, it is really very handsome in the proper setting which is among lavender or pale yellow irises. It is large, well formed and well branched. It has not thoroughly proved its hardiness here. H. M. 1937. R. 85, 1938. **\$8.00**

MISS ARAVILLA (H. P. Sass 1938) M. 36 in. A brilliant variegata blend of gold and chestnut red, brighter than King Tut, of which it is a seedling. Its vivid colors will brighten any dark corner. It is of medium large size and good form on a beautifully branched stalk. The plants are very vigorous and bloom profusely. **\$1.00, 3 for \$2.50**

MISS CAMELIA (H. P. Sass 1938) M. 40 in. A large and shapely flower of clear lavender blue—a perfect self of fine ruffled form. A clump of this among soft light yellows is most effective. The stalks are tall and well branched, the plant most dependable in growth and bloom. R. 86, 1938. **\$1.00, 3 for \$2.50**

MISSOURI (Grinter 1933) M. 40 in. A grand blue iris of medium tone and exceptionally pure coloring. The flowers are large, with widely flaring falls, the substance heavy and lasting. Tall, well branched stalks and strong, free blooming, hardy plants add what it takes to make a good, all around iris. H. M. 1933. A. M. 1935. Dykes Medal 1937. Per. R. 90, 1936. A good record. **\$2.00, 3 for \$5.00**

MOHRSON (White 1935) M. 30 in. A hardy, easily grown seedling of the famous William Mohr. It is taller, larger and deeper in coloring, with better branching. The large, ruffled flowers are of light violet very heavily veined throughout with deep petunia violet. It grows well here and blooms freely. H. M. 1934. Per. R. 89, 1938. **\$1.50**

MONOMOY (McKee 1936) M. 38 in. A fine, large, dark blue purple iris that is always much admired in our garden. It is rich and brilliant in spite of its dark coloring—making a beautiful contrast with deep yellows. The stalks are tall and well branched, the plants have good blooming habits. H. M. 1934. R. 88, 1936. **\$1.50, 3 for \$3.50**

MOONGLO (Wmsn. 1935) M. 36 in. A luscious and lovely flower of deep orange yellow, like the harvest moon. It is flushed but not dulled with darker tones of brownish violet. This flower must be seen to be fully appreciated—as it is hard to describe its exceptional qualities. It is large and most shapely, with splendid substance and good branching. It grows taller for us than 36 in., and is an outstanding iris in our garden. H. M. 1936. Per. R. 89, 1938. **\$1.50**

MRS. J. L. GIBSON (Gib. 1930) L. 38 in. A really splendid dark violet blue self. Its deep color and lustrous finish make it a beautiful accent among lighter blue or white irises. Gold Medal, England, 1930. R. 89, 1937. **\$1.00, 3 for \$2.00**

MRS. WILLARD JAKES (J. Sass 1938) M. 36 in. A very charming blend of pink and yellow, warm and smooth in tone and graceful in carriage. The flowers are daintily ruffled and pleasingly placed on the stem. A perfect garden blend as it grows easily and blooms freely. Not yet rated. **\$5.00**

NARAIN (Shuber 1936) M. 38 in. A clear and refreshing shade of blue, this iris is named for a water spirit whose image may be seen in a deep blue lake in Tibet. Even the beard is a soft blue, lightly tipped with yellow. The large flowers are of good form with flaring falls, the stalk good and the plant very dependable. R. 88, 1938. **\$2.50**

NARANJA (Mit. 1935) M. L. 40 in. A very rich, deep yellow self with an orange overlay on the falls. A distinct new color in iris, it has been much in demand, outstanding in the garden and at shows. For a striking contrast this is a good companion for Missouri. It is perfectly hardy and free blooming here. H. M. 1936. A. M. 1937. Per. R. 91, 1936. **\$5.00**

NASSAK (H. P. Sass 1938) M. 38 in. This is considered by many to be the very finest of the new, hardy plicatas. The large white flowers are cleanly marked with a bright blue plicata edge, and are beautifully formed. The stalk, plant growth and blooming habits are all that one could ask. Not yet rated but very good. **\$1.00**

ORIANA (H. P. Sass 1933) M. L. 32 in. A fine pure hardy white that grows steadily in popularity. The flowers are large and beautifully rounded, with smooth, even texture and unusually heavy substance. Its medium height and profusion of bloom give it wonderful garden value. It is the pod parent of Snowking and although not quite so grand and tall, it shows many of its superior qualities. H. M. 1933. Per. R. 87, 1937. **\$1.00, 3 for \$2.00**

ORLOFF (H. P. Sass 1938) M. 38 in. This is one of the richest of the new yellow plicatas which have created such a sensation. The ground color is yellow, richly patterned and blended with red brown, a most unusual and striking flower. The large, ruffled blooms are well carried and produce freely. The plant is hardy and a good, strong grower. R. 90, 1938. **\$15.00**

OSCEOLA (Wiesner 1937) M. 40 in. A fine, clear, sky blue, much like the lovely Souv. de Loetitia Michaud in color but far more satisfactory to grow as it is perfectly hardy and a profuse bloomer. The tall stalks are well branched, the flowers large, well formed and of good substance. **\$1.00, 3 for \$2.00**

OSSAR (H. P. Sass 1937) M. 32 in. A rich and brilliant iris, neither large nor very tall but really radiant and glowing in color. It is a near self of rich brown red with more pure color in the standards than is often seen, and is kindled by a bright orange beard. This would make a grand clump in the front of a planting of mahogany reds and browns relieved by soft yellows. It is perfectly hardy and very free blooming. It comes from 30-40 x Avondale. R. 88, 1938. **\$2.50**

OXHEART (Nich. 1934) L. 36 in. A fine red purple iris similar in color to a ripe Oxheart cherry. The wide, circular, velvety falls are smooth and unveined and the dark beard adds to the richness of the flower. A very charming and unusual iris that seems to have been somewhat overlooked, perhaps because of its late season. R. 84, 1936. **50c**

OZONE (J. Sass 1935) M. 36 in. One of the favorites in our garden, Ozone is really different and very appealing. It is a true lavender self of luminous quality, overlaid with a lustrous pink tone. At the haft is a smooth copper patch like a signal. We find that this spot is just the color of Copper Lustre so that the two planted together make a stunning combination. Ozone is strong in growth and very free flowering. H. M. 1936. Per. R. 90, 1936. **\$2.50**

PARTHENON (Con. 1934) M. 40 in. A smooth chalky white with a central glow of pale gold. It is tall, vigorous and hardy with profuse bloom. A very good garden white, beautiful in a mass planting. H. M. 1936. **50c, 3 for \$1.00**

PEARL LUSTRE (Weed 1937) M. 38 in. A clear light yellow self of excellent form and substance. The large, nicely formed flowers are well placed on the stalks and the plants are hardy and vigorous, blooming freely. R. 83, 1938. **\$10.00**

PIUTE (Thom. 1937) M. 38 in. This iris attracted much attention in our garden because of its rich color, a pure deep ruby red. The flowers are not over large but they are well groomed and of superior texture and refinement, with excellent substance. Its relatively low rating is probably due to the fact that it is not of huge size, but we like those of medium size and height when they have as much charm as has Piute. As only five judges sent in ratings, perhaps this average will be raised as more judges see it. R. 83, 1938. **\$10.00**

PLURABELLE (Cay. 1933) M. 40 in. We like Plurabelle with its clear yellow standards and rose pink falls, a pastel variegata. The flowers are of medium size, the tall, perfectly branched stalks carrying ten to twelve buds. It is a pleasing companion for Dog Rose. Its growth is vigorous and the bloom profuse. C. M., France, 1933. R. 88, 1937. **\$1.00, 3 for \$2.00**

PRAIRIE ROSE (Egelberg 1935) M. 38 in. This fine pink does not seem to be very well known but is always much admired by garden visitors. A clear orchid pink self, it is good alone or with soft blues and yellows. It is tall, well branched and a strong hardy grower. **50c**

PRINCE AMBA (Weed 1936) V. L. 40 in. A large light yellow iris with a pleasing pattern of brown lines on the falls after the manner of Helios, a unique and interesting iris. The blooms are large and full formed, the stalks well branched. Hardy and vigorous, with free bloom. R. 82, 1938. **\$10.00**

PROF. S. B. MITCHELL (Cay. 1933) M. 30 in. A fine French iris named for one of our foremost American hybridizers. It is a large, fully rounded flower of deep, pure red purple, almost self toned with broad velvety falls. It seems to grow well here but is not very free blooming. R. 83, 1938. C. M., France, 1933. **\$15.00**

From New Jersey—I love your catalog and wish my order could be bigger.

Member A. I. S.

From Delaware—Thank you so much for the planting suggestion and the extra root to complete it. All the rhizomes were fine—large and firm.

QUADROON (Williams 1937) M. 38 in. A clear toned and brilliant variegata with standards of golden tan and falls of bright coppery red. It glows in any planting and causes much favorable comment. A strong, hardy iris with free blooming habits. R. 88, 1938. \$5.00

RED COMET (McKee 1936) M. 40 in. A large, deep coppery red self with a mahogany undertone, giving a rich red brown effect in the garden. The plant is vigorous, the branching good, the blooming habits excellent. H. M. 1935. Per. R. 89, 1938. \$5.00

RED RADIANCE (Grinter 1932) M. 38 in. Redder and brighter than Dauntless but not quite as large, one of the very best garden reds. Growth, branching, stalk and blooming habits are all fine. H. M. 1932. R. 89, 1936. 35c

RED ROBE (Nich. 1932) M. L. 36 in. Another fine red, deeper and more red purple than Red Radiance and later blooming. The blooms are large, well formed and lustrous, the growth and blooming habits excellent. H. M. 1932. R. 87, 1933. 35c

ROSY WINGS (Gage 1935) M. 40 in. A smooth, beautiful blend that is always greatly admired in our garden. Its daphne pink to helebore red tones are evenly blended with a warm brown tint that softens but does not dull the effect. In form, height, branching and growth it is most worthy of recommendation. H. M. 1934. A. M. 1936. Per. R. 89, 1937. \$7.00

ROYAL BEAUTY (McKee 1932) M. 40 in. A brilliant, deep blue or royal purple iris of rich velvety finish. A clear, carrying tone of blue that is lovely with deep yellow or white irises. The flowers are large and well formed, the branching and growth good. H. M. 1931. R. 87, 1933. 50c, 3 for \$1.00

RUBEO (M. M. 1931) M. 48 in. Still one of the finest reds for both garden and show bench. The standards are rose red, the falls of deep velvety maroon; the flowers are large and the stalks tall and splendidly branched. It is perfectly hardy and reliable in growth and bloom here. R. 89, 1936. 50c, 3 for \$1.20

RUSSET GOWN (Williams 1937) L. 38 in. A very striking buff and red brown bicolor of fine coloring and velvety texture. The colors are warm and glowing, the flower of good form and substance. Tall, well branched and hardy. R. 87, 1937. \$2.50

SAHARA (Pilk. 1936) M. 38 in. This is a smooth and beautiful primrose yellow of perfect form and clear pure coloring, most refined and charming in every way. It is hardy and vigorous with good blooming habits. Dykes Medal, England, 1935. A. M. 1938. R. 90, 1938. \$5.00

SAMBA DIOUF (Cay. 1931) V. E. 38 in. A very fine, large dark blue that is one of the first to bloom. The flowers are beautifully formed, rich in color and with a lustrous, silky sheen. C. M., France, 1931. 50c

SANDALWOOD (H. P. Sass 1937) L. 34 in. A soft, creamy brown iris of rare delicacy, warmed by a flush of mauve. The large, beautifully ruffled flowers are gracefully carried on tall, well branched stems. The plant is strong, hardy and floriferous. R. 90, 1938. \$5.00

SANDIA (Wmsn.) E. M. 38 in. A warm, luscious blend of pink and yellow—reminiscent one of the color of a snapdragon. The large, fully rounded flowers are delicately finished but of good substance. Well branched stems and good vigorous growth. R. 86, 1937. 75c

SEDUCTION (Cay. 1933) M. 40 in. This is a most unusual plicata—the lavender markings having a distinct pink effect. The flowers are large and shapely, the color clear and fresh on the white background. The plant is hardy here and blooms quite freely, with tall, well branched stalks. C. M., France, 1933. A. M. 1937. Per. R. 88.5, 1937. \$2.50

SHAH JEHAN (Neel 1932) L. 38 in. A glamorous iris—perfectly unique in coloring. The standards are creamy yellow, faintly tinged with lavender. The falls are deep plum purple, clearly edged with lavender. The fine, large flowers with widely flaring falls are beautifully placed on the tall, splendidly branched stalks. The plants are vigorous and bloom freely. Bronze Medal, England, 1933. A. M. 1937. Per. R. 89, 1937. 50c

SHINING WATERS (Essig 1933) E. M. 36 in. A clear and lovely pure blue self like the reflection of the sky in shining waters. The firm, waxlike texture, perfect finish and poise make this an outstanding beauty. Semi-tender here but worth protection. H. M. 1934. A. M. 1935. Per. R. 91, 1937. 50c

SHIRVAN (Loomis 1932) M. L. 34 in. A rich, glowing iris with the rare charm of an oriental rug in warm brown and velvety red coloring. A flower of matchless distinction, it grows well and blooms freely. H. M. 1932. A. M. 1936. R. 85, 1936. 50c

SIEGFRIED (H. P. Sass 1936) L. 44 in. An iris that has created a sensation from coast to coast. As the first large flowered yellow plicata it is indeed an extraordinary color break. The large, full ruffled flowers are of clear Naples yellow with a distinct plicata marking of rich brown. It is tall, well branched and vigorous in growth, blooming freely. H. M. 1926. A. M. 1938. Per. R. 92, 1937. \$15.00

SIERRA BLUE (Essig 1930) E. M. 50 in. A very large and tall lavender blue self of medium tone and wide flaring falls. It may not be perfectly hardy in all situations but blooms quite well here. H. M. 1933. Dykes Medal 1935. R. 92, 1936. 75c

SIR KNIGHT (Ashley 1933) M. 40 in. A fine, deep blue—brilliant in color for so dark an iris. The standards are firmly domed the falls wide and flaring, with a lustrous sheen of black. A strong grower and a good bloomer. H. M. 1936. Per. R. 87, 1937. \$1.00

SIR LAUNCELOT (J. Sass 1935) M. L. 32 in. A very brilliant copper red iris of medium size and height but of exceptional garden value because of its clear, vivid coloring. A good hardy plant with abundant bloom. H. M. 1937. Per. R. 87, 1938. \$1.50

SITKA (Essig 1932) M. L. 48 in. A large pure white iris of beautiful form and carriage. It seems fairly hardy here blooming quite regularly. It is tall, well branched and late. R. 90, 1936. 35c

SMOLDER (Nich. 1937) L. 46 in. A very deep, black-purple self with a rich undertone of red. The texture is smooth and satiny—the substance heavy and weather resistant. The form is graceful, the standards well domed, the falls curving out and down, giving a charming oval effect to the bloom. It is tall, well branched and very late, a valuable addition to any garden. Perfectly hardy and very floriferous. R. 90, 1938. \$7.50

SNOWKING (H. P. Sass 1935) M. L. 42 in. Truly the king of white irises. It is large, beautifully formed and regal in bearing. The stalks are tall and widely branched, proudly bearing the pure white flowers which are of such heavy substance that each one lasts for days. The plants are perfectly hardy and the bloom most dependable. We cannot recommend this variety too highly. H. M. 1936. A. M. 1937. Per. R. 93, 1936. This is a fine record. \$5.00

SPOKAN (J. Sass 1933) L. 36 in. A lively red-brown blend with lustrous copper lights. The flowers are large, of good form and carried on well branched medium height stems. The plants grow easily and bloom profusely. Per. R. 86, 1936. \$1.50

SPRING CLOUD (Jory 1935) M. 40 in. A fine, large, blue and white plicata with outstanding personality. The standards are white, very heavily veined with dark blue and the wide falls are white, clearly margined with the same blue tone. Very unusual and striking. Hardy and free blooming. H. M. 1932. R. 87, 1938. 52c

SPRING PROM (D. Hall 1938) M. 45 in. This introduction was most graciously received last year—it was greatly admired in the garden and we sold twice as many roots as we had hoped to sell. It is a tall and beautiful primrose yellow self with large, wide petalled blooms measuring seven inches across. The standards arch firmly, the falls spread widely, the haft is broad, with a rich, deep yellow beard. The substance of the flowers is especially good, holding well in all kinds of weather. This, with the fine, wide branching and many buds give it a long blooming season. Spring Prom is of wonderfully sturdy growth, increasing rapidly and blooming profusely. H. M. 1937. R. 90, 1938. \$10.00

ST. LOUIS (Wiesner 1933) M. 40 in. A very good, deep blue of rich, intense coloring. The flowers are of medium size, well groomed and produced abundantly on the tall stalks. A wonderful landscape iris because of its clear, pure color and complete hardiness. R. 85, 1936. 50c

From Delaware—I am most appreciative of your splendid plants. I can pick yours out easily in the beds without reading the tags. When my colored house man opened the box he said, "My them's fine folks—I ain't never seen no such Irish buds as them there—so full and ripe—they look good enough to eat." (This is one of the nicest compliments we ever received.)

SUMMER TAN (Kirk. 1935) M. 38 in. A rich, golden tan iris in a color class by itself. Its smooth, glowing warmth and velvety texture make it an outstanding beauty. The substance of the flowers is unusually fine, the plants are strong and hardy and bloom very freely. H. M. 1936. Per. R. 89, 1936. \$1.00

SUNMIST (Nich. 1934) M. 36 in. A shimmering white iris with a gleam of gold in the center like the sun shining through a mist. Distinct and individual in color, form and substance. Tall, well branched, vigorous and floriferous. H. M. 1936. Per. R. 87, 1937. \$1.00

SWEET ALIBI (White 1935) E. 40 in. A large and very beautiful iris of pale, creamy yellow with a smooth and lustrous finish. The flowers are full and rounded, evenly toned throughout and of graceful form. The stalks are tall and widely branched. Not very hardy here. H. M. 1936. Per. R. 88, 1937. \$1.00

TARANTELLA (H. P. Sass-Sch. 1935) M. L. 36 in. The best pink edged plicata we have seen; its medium large, ruffled flowers are pure white with a definitely pink lavender edge. A very fresh and dainty flower with a most pleasing personality. It is a strong grower and blooms freely here. R. 83, 1938. \$3.00

THE BISHOP (Wash. 1937) M. 38 in. A stately and beautiful flower of magnificent coloring. It is an intense bishop's purple self with a brilliant gold beard. The flowers are long but full and rounded; the well branched stalks carry them proudly. H. M. 1938. R. 90, 1938. \$7.00

THE BLACK DOUGLAS (J. Sass 1934) M. 36 in. A great favorite is this deep pansy violet, so rich and dark as to be almost black, yet lively and glowing in the sun. The blooms are full and ruffled, the stock amply branched to carry them well. Strong, free flowering plants make this a wonderful garden iris. H. M. 1936. Per. R. 89, 1937. \$1.00

THE RED DOUGLAS (J. Sass 1937) M. 40 in. The climax of a long line of beautiful, red toned irises, The Red Douglas is widely acclaimed to be one of the finest varieties ever introduced. It is indeed a sumptuous beauty in its deep, glowing, wine red coloring. It is almost a self, with the color intensified by the velvet on the wide, heavy falls and accented by the rich gold beard. The flowers are large and proudly carried on the tall, widely branched stalks. The plant is perfectly hardy and vigorous here and blooms very freely. It does not seem to increase as fast as we might wish but perhaps that is because the demand is so great that there is never enough to go around. H. M. 1936. Per. R. 93, 1937. \$20.00

TIFFANY (H. P. Sass 1938) M. 36 in. A most striking and unusual plicata is this large, ruffled beauty of light yellow, heavily bordered with deep brown purple, almost maroon. The standards are dotted and edged with the rich red brown pattern and the falls are widely bordered with the same shade. It is rich and fine, a very charming iris as well as a decided color break. The plants are strong and hardy, blooming freely and increasing well. H. M. 1938. Per. R. 90, 1938. \$10.00

TINT O' TAN (Ayres 1934) M. L. 40 in. A warm golden tan iris of unique color and form. Tall, well branched and a very vigorous grower, it blooms freely and makes a good garden clump. Per. R. 86, 1937. \$1.00

TRAILS END (Wmsn. 1934) M. 38 in. An iris of rich and brilliant coloring, the standards golden tan mingled with orange, the falls burnt orange or bitter-sweet. Strong, vigorous and free blooming, it makes a grand variety for landscape work. Per. R. 83, 1937. 50c

TRAUMEREI (Williams 1938) M. 40 in. A large and impressive flower of light lavender blue, almost a self, a seedling of Violet Crown. The tall, well branched stalks carry the blooms gracefully. It is perfectly hardy here and blooms well. Not yet rated. \$5.00

HAD YOU THOUGHT OF THIS?

From Indiana—The box of irises came today and they are beautiful. Please send a duplicate of my order to arrive before next Thursday—I want them for bridge prizes.

From Massachusetts—The iris just came in most excellent condition, and I want to thank you for the root of Black Douglas—one I had longed for. And the rhizomes were all such splendid large healthy specimens! I will surely send again next year.

Member A. I. S.



SNOWKING

VALOR (Nich. 1932) M. 50 in. One of the most satisfactory irises in the garden and one that will not be outclassed for years to come. The standards are clear, blue violet, domed and firm, the falls rich raisin purple. The flowers are large and well formed, of excellent substance and pure, clear coloring. The stalks are tall and splendidly branched, carrying many flowers which insure a long season of bloom. The plants are strong and prolific. H. M. 1932. A. M. 1936. R. 89, 1937. **35c**

VARESE (Wmsn. 1935) M. 37 in. A clear red purple iris of very carrying color—quite unlike any other. It has a full, rounded shape and petals of firm substance. The stalks are of medium height and well branched. The strong, hardy plants bloom profusely. R. 87, 1938. **\$1.50**

VIOLET CROWN (Kirk. 1931) A very large and attractive flower of clear, pure rosy violet shade different in tone from any other we know. It is lovely planted among pure white irises near deep red purples such as Indian Hills and Iris City. It is tall and fine with many bloomstalks on strong, hardy plants. H. M. 1936. R. 89, 1937. **40c**

VISION (Cay. 1933) M. 38 in. A brilliant variegata with warm yellow standards and velvety, garnet red falls. A heavy gold beard intensifies the rich coloring. The stalk is symmetrically branched, the plant hardy and vigorous. C. M., France, 1932. R. 87, 1936. **\$1.50**

WABASH (Wmsn. 1936) M. 39 in. A fine large, true amoena, the best one we have seen. The firmly arched standards are pure white, the wide falls deep hyacinth violet with a definite white margin. A very stunning flower admired by everyone who sees it. The plants are perfectly hardy, the bloom free and the branching good. H. M. 1937. A. M. 1938. Per. R. 90, 1938. **\$5.00**

WAR EAGLE (J. Sass 1933) M. L. 38 in. A very large iris of deep red purple coloring, almost a self. The huge flowers are of full form with wide petals, the stalks are well branched. The plants are hardy and prolific, the bloom abundant. Per. R. 86, 1937. **\$1.00**

WASATCH (Thor. 1935) M. 40 in. An outstanding plicata of pure, glistening white clearly stitched with blue. The flowers are large and of excellent substance, well placed on the widely branched stalks. The strong hardy plants bloom freely. H. M. 1936. Per. R. 88, 1937. **\$2.50**

WAVERLY (Williams 1936) One of the clearest and purest blue irises in the garden. This is a color we cannot ever get enough of as it accents or brings out almost every other iris color. Waverly has a fine, flaring form, the flowers are of excellent substance, firm and lasting. The plants are hardy and strong, the blooming habits and branching good. Per. R. 88, 1938. **\$10.00**

WILDFIRE (Nich. 1938) A most interesting iris coming from Dauntless and a Sass seedling, 30-40. It is of uniform color, a brown red, although the thickness of the falls makes them seem darker. The substance of the whole flower is very good and the texture satiny, the reddish brown beard adding a note of interest. The flowers are of medium large size and well carried on the splendidly branched stalks. Perfectly hardy and floriferous. See A. I. S. Bulletin 67, p 34. Not yet rated. **\$7.50**

WINE GLORY (Weed 1936) E. M. 38 in. A clear, wine red self that blooms profusely over a long season. The hardy plants increase rapidly and make a fine mass planting. R. 81, 1937.

\$1.00, 3 for \$2.00

WINNESHIEK (Egel. 1931) M. 40 in. This fine, dark violet iris will always be a great favorite. It is a deep blue purple of refinement and charm, the falls being darker than the standards but shading to their lighter campanula tones at the edges. The large, full, ruffled flowers are of taffeta finish and remain crisp and fresh over a long season. It is not a new iris but holds its own among them. We sold out last season but restocked it from the originator. R. 87, 1933.

35c, 3 for \$1.00

WONDERCHILD (Weed 1933) M. 37 in. This is a child of Blue Velvet which has its rich, fine color with hardier and freer flowering habits. A deep midnight blue of velvety texture. **\$1.00, 3 for \$2.00**

WOTAN (Grinter 1933) L. 35 in. A handsome, beautifully groomed flower of dark, prune purple coloring. It is not very tall but the blooms and stalks are well proportioned, and it makes a grand clump of color. It is the pod parent of Garden Magic. It is not rated quite as high as it might be, perhaps because of its height, but if they all grew 40-45 inches tall what would we plant in the front of our borders? R. 85, 1936. **50c**

W. R. DYKES (Dykes 1926) M. 38 in. A large, light yellow self, tall and well branched. This English iris has been used much in breeding and has produced some wonderful yellows. Does not grow very well here. R. 89, 1933. **50c**

CHOOSE 15 FOR \$2.00—PREPAID—NO DISCOUNT—Order Early

These are all fine, high rating irises, thoroughly tested for hardiness. A few, marked T., are somewhat tender here. Please name several second choices as these will not last all season. A few have no official rating but are good or we would not list them.

AL-LU-WE (Sass 1932) M. L. 40 in. Large, beautifully ruffled flower of golden tan and Bordeaux red. R. 86.

ANNE MARIE CAYEUX (Cay. 1928) M. 38 in. Gleaming, iridescent blend of pink, blue and heliotrope. Smoothly finished. R. 87.

ASHTORETH (Beau. 1932) M. 40 in. Large, clear, lustrous yellow self. R. 85.

BALDWIN (Sass 1925) M. 40 in. Fine, tall, violet blue self of excellent form and color. R. 88.

BLACKAMOR (Sass 1932) M. 38 in. Very good, deep blue purple with blue beard. R. 85.

BLUE MONARCH (J. Sass 1933) M. 40 in. Fine, large, light lavender blue self—one of the best. R. 87.

BLUE VELVET (Loomis 1929) M. 40 in. Rich, dark midnight blue—a beauty. T. R. 86.

DAUNTLESS (Con. 1929) M. 40 in. Beautiful, deep, velvety bronze red. Dykes Medal 1929. R. 90.

DECENNIAL (Wmsn. 1930) A distinctive variegata with yellow standards and bright blue purple falls. R. 84.

DEPUTE NOMBLOT (Cay. 1929) M. L. 45 in. Enormous flowers of rosy red purple and bronze, well formed and splendidly branched. Dykes Medal, France, 1930. R. 88.

DOG ROSE (Insole 1930) M. 40 in. Large oval flowers of clear rose pink. Outstanding. R. 88.

DOROTHY DIETZ (Wmsn. 1929) M. L. 36 in. Clear white standards with bright pansy violet falls. Large and fine. R. 87.

EDGEWOOD (Hall 1926) M. L. 40 in. Brilliant pink bicolor. Very large and tall and very good.

GOLD VELLUM (Gage 1934) Pure, clear yellow of smooth, even texture and great charm. R. 87.

HELIOS (Cay. 1929) M. 44 in. Enormous flowers of clear, light yellow with violet lines on falls. Unusual and fine. R. 85.

HOLLYWOOD (Essig 1931) L. 36 in. Beautiful pink bicolor with wide, flaring falls. Excellent. R. 87.

HONEYDROP (Mor. 1929) M. 36 in. Very lovely blend of honey, rose and brown. Unique. R. 87.

KING JUBA (Sass 1931) M. 40 in. Standards clear, golden yellow, falls red velvet. Large and good. R. 85.

LEGEND (Ware. 1932) M. 38 in. Fine, large, red purple self. A great favorite. R. 84.

LOS ANGELES (M. M. 1927) Large and beautiful white with clear blue plicata markings. Popular. R. 92. T.

LUX (Cay. 1931) M. 36 in. Creamy apricot with raspberry flush on falls. Unusual and pleasing.

MEPHISTO (Cay. 1930) L. 40 in. Fine indigo violet self, almost black. Very effective.

MOTIF (Sturt. 1930) M. 38 in. Well groomed iris of pure, deep pansy purple. One of the best. R. 89.

NEBRASKA (Sass 1927) V. L. 34 in. Very rich apricot yellow of pleasing ruffled form. Late and very good. R. 82.

NO-WE-TA (Sass 1932) M. 32 in. Lovely ruffled pink, clear and pure, of medium size. Very popular. R. 87.

PACIFIC (Essig 1929) M. 34 in. Pure light blue—wonderful color. Large flowers of medium height. R. 87. T.

PERSIA (Ayres 1929) M. 48 in. Bright medley of blue and purple tones. Large and very fine. R. 86.

PHEBUS (Cay. 1930) M. 36 in. Clear, pure, light yellow iris. Beautifully rounded form, smooth finish. R. 87.

PINK OPAL (Sass 1934) M. 40 in. Large and tall orchid pink of deep coloring. Very good. R. 86.

PRESIDENT PILKINGTON (Cay. 1931) M. L. 46 in. Fine, large blue and gold blend. Very popular. R. 86.

SENSATION (Cay. 1925) M. L. 38 in. One of the very best clear, light blues. A winner. R. 85.

SEPTEMBER DAWN (Nich. 1935) E. 28 in. Very pleasing blend of clear pink and pale gold. Lovely color. R. 85.

SPRING MAID (Loomis 1932) M. 46 in. Tall, stately, rose pink blend. Great garden value. R. 84.

VENUS DE MILO (Ayres 1931) M. 40 in. Pure warm white of wonderful form and substance. A best seller. R. 89.

WAMBLISKA (Sass 1931) M. 38 in. Clear, cold white with slight bluish tone. Fine, large flowers. R. 86.

WINNESHIEK (Egel. 1931) M. 40 in. One of the best dark blue purples. Very much in demand. R. 87.

From Maine—Enclosed find check for new order. Your irises last year were most satisfactory—nearly every one bloomed and all have made fine growth.

CHOOSE 25 FOR \$2.00—PREPAID—NO DISCOUNT—Order Early

Please send several second choices as these are rare bargains and will go fast. A few have no official rating but all are good.

AIRY DREAM (Sturt. 1929) M. 36 in. Lovely, delicate pink of rare charm. R. 87.
ALQUIPPA (Hall 1924) M. 34 in. Clear, light yellow of sprightly form.
ANDANTE (Wmsn. 1930) M. 38 in. Large, fine flowers of rich raisin purple. R. 85.
BEAU SABREUR (Wmsn. 1930) M. 32 in. Deep glowing bronze red blended bicolor. R. 81, but very good.
BLUEBONNET (Egel. 1931) M. 38 in. Pure chicory blue with darker falls. Lovely color.
BLUE HILL (Sass 1931) M. 34 in. Clear, medium light blue with white beard. Fine color effect. R. 87.
BLUE WAVES (Sass 1933) M. 34 in. Rich, medium dark blue, very good for massing.
BOADICEA (Nich. 1931) M. 36 in. Lovely light pink and yellow blend. R. 83.
BRUNO (Bliss 1922) M. 36 in. Large, brown and red purple bicolor. Old but very good. R. 83.
CAMELIARD (Sturt. 1927) M. L. 40 in. Very pleasing flower with clear yellow standards and plum red falls. R. 83.
CARDINAL (Bliss 1919) M. L. 36 in. Another older iris that still holds its own, a deep velvety purple. R. 86.
CARFAX (Bliss 1930) M. 38 in. Glowing wine red purple self. Fine rich color and good flower.
CLARA NOYES (Sass 1931) M. 30 in. Very brilliant blend of red, yellow and orange. Much in demand. R. 85.
CLASSIC (Grinter 1930) M. 40 in. Lovely blend of rose, yellow and orchid. Good.
CORONATION (Moore 1927) Pure, deep yellow self of good size and excellent garden effect. R. 86.
DESERT GOLD (Kirk. 1929) V. E. 30 in. Fine, large, light yellow of splendid form and substance. Outstanding. R. 87.
DOLLY MADISON (Wmsn. 1927) M. 36 in. Mauve and gold blend of superior qualities. Never grows old. R. 87.
DON JUAN (Cay. 1928) M. 36 in. Fine, large, rosy red and pansy violet bicolor.
ELOISE LAPHAM (Lap. 1932) M. 36 in. Very delicate pink of smooth, fresh coloring. Good form and substance. R. 87.
EVELYN BENSON (Mur. 1931) M. 38 in. Light rosy carmine self with metallic sheen.
EVOLUTION (Cay. 1929) M. 36 in. Deep blue and coppery bronze blend. Very good form and substance. R. 85.
FASCINATION (Cay. 1927) M. 46 in. Large, deep rosy lavender self. Very good.

GERMAINE PERTHUIS (Mil. 1924) M. 40 in. Intense violet purple self, rich and very fine. R. 86.
GLEAM (Nich. 1929) M. 34 in. Very lovely shade of blue, pure and clear. Good garden color. R. 88.
GOLDWING (Nich. 1934) M. 36 in. Pure deep yellow of even tone, wonderful for mass plantings. R. 85.
HUSSARD (Vil. 1924) M. L. 40 in. Very good medium light blue for mass planting. Much admired.
HYPNOS (Con. 1931) M. 38 in. A clear but subtle medley of rose, gray and blue. Very effective. R. 83.
INDIAN CHIEF (Ayres 1929) M. 40 in. Brilliant red bicolor that will always be a standout. R. 84.
IRMA POLLOCK (Sass 1931) M. 36 in. Glowing carmine red self of great garden value. R. 86.
KING MIDAS (Mead 1929) V. E. 30 in. Beautiful bronze gold blend—the "golden touch" of the early garden. R. 87.
KING TUT (Sass 1929) M. L. 30 in. Vivid and brilliant brown and chestnut red. Always a best seller. R. 84.
KLAMATH (Klein. 1929) M. 40 in. Very large blend of bronze, violet and plum purple.
KUBLAI KHAN (Wmsn. 1931) M. 40 in. Rich rosy red bicolor of excellent form and substance.
LADY MORVYTH (Mur. 1932) E. 38 in. Very good yellow and red brown bicolor with fine finish and style.
LUZIANA (Wmsn. 1932) M. 30 in. Fine, clear medium blue, rich and pure toned.
MIDGARD (Sass 1926) Lovely pink and yellow blend, delightfully ruffled. Great favorite. R. 87.
MIDWEST PRIDE (Sass 1931) M. L. 36 in. Rich and glowing Hortense violet self. Unique. R. 81 but good.
MOUNT ROYAL (Morgan 1929) M. 36 in. Dark purple and pansy violet. R. 82.
MRS. VALERIE WEST (Bliss 1925) M. 40 in. Rich bronze and velvety wine purple, large and fine. R. 88.
NINGAL (Ayres 1932) M. 38 in. Smooth, lustrous blend of pale gold and buff. Distinctive. R. 83.
ORIENT PEARL (Mur. 1930) M. 40 in. Tall, pearly pink blend, lovely in mass.
PLUIE D'OR (Cay. 1928) M. 38 in. Free flowering and excellent yellow self of wonderful landscape value. R. 87.
PURISSIMA (M. M. 1927) M. 40 in. The almost perfect white iris. R. 84. T.

RAMESES (Sass 1929) L. 32 in. Beautiful blend of golden buff and tourmaline pink. A grand iris. Dykes Medal 1932. R. 90.
RAYO DE SOL (M. M. 1930) M. 38 in. Clear, fine yellow self of good substance and garden value.
REALM (Baker 1920) M. 42 in. Very good light blue for massing. Clear, pure color.
RED WING (Sass 1927) M. 36 in. Fine, large, red blend of good form and color. Good garden effect.
RENE CAYEUX (Cay. 1924) M. L. 36 in. An unusual beauty with pink standards and crimson violet falls.
RHEINTOCHTER (G. & K. 1929) M. 38 in. Clear amoena with white standards and deep violet falls. R. 83.
ROMANCE (Mur. 1928) M. 36 in. Fine, mauve pink blend of luminous quality. Much admired.
SACHEM (Loomis 1931) Glowing Indian colors of red and brown. Popular.
SACRAMENTO (M. M. 1929) M. 40 in. Large flowers, white with feathered edge of rosy purple. R. 82.

SAN FRANCISCO (M. M. 1927) M. 44 in. Fine, large white plicata, edged with blue. Dykes Medal 1927. R. 87. T.
SELENE (Con. 1931) M. 40 in. Luminous, pearly white self, very lovely. R. 82.
TALISMAN (Mur. 1930) M. L. 32 in. Beautiful blend of rose, pink and apricot tones, like a Talisman rose. R. 83.
THAIS (Cay. 1926) M. 42 in. Large, lilac pink self, very fine ruffled form.
THURATUS (Sass 1931) M. 40 in. One of the finest of dark irises—almost black purple. R. 86.
TOKAY (Nich. 1931) M. 34 in. Soft coppery pink blend, smooth and luscious as Tokay grapes.
VISHNU (Sturt. 1930) M. L. 38 in. Charming pink lavender and cinnamon blend. R. 84.
WACONDA (Sass 1931) Rich mahogany red self—much admired. R. 86.
ZAHARON (Dykes 1927) M. L. 42 in. An iridescent blend of pale gold and violet mauve. R. 86.
ZULU (Bliss 1925) L. 38 in. Brilliant violet blue bicolor, rich and velvety. R. 81.
ZUNI (Ayres 1931) M. 40 in. Glowing red brown and coppery red bicolor. Large and very fine. R. 84.

CHOOSE 10 FOR \$3.00 OR 25 FOR \$5.00

Alta California
Beotie
Black Wings
Black Warrior
Buechly Giant
Byzantium
Chromylla
Crown Prince
Douglas

Easter Morn
Genevieve Serouge
Imperial Blush
Indigo Bunting
Jerry
Louis Willert
Magi
Marian Lapham
Mary Geddes

Medley
Meldoric
M. Fernand David
Nene
Oxheart
Parthenon
Prairie Rose
Red Radiance
Red Robe

Retta
Royal Beauty
Sitka
Spring Cloud
St. Louis
Tenaya
Trail's End
Valor
Wotan

CHOOSE 5 FOR \$3.00

Amenti
Apricot Glow
Creole Belle
Crystal Beauty
Electra
Ethel Peckham
Eros

Golden Light
Gudrun
Jean Cayeux
Joycette
Kalinga
K. V. Ayres
Miss Aravilla

10 FOR \$5.00

Maluska
Mrs. J. L. Gibson
Mussolini
Oriana
Osceola
Plurabelle
Sir Knight

20 FOR \$8.00

Spokan
The Black Douglas
Sunmist
War Eagle
Wine Glory
Tint o' Tan
Wonderchild

CHOOSE 6 FOR \$5.00 OR 15 FOR \$10.00

Alice Harding
Blue Triumph
Coralie
Cheerio
Blithesome

Deseret
Dymia
Eilah
El Tovar
Far West

Golden Helmet
Jeb Stuart
Maluska
Marquita
Monomoy

Moonglo
Sir Launcelot
Spokan
Sunmist
Vision

CHOOSE 4 FOR \$15.00 OR ALL FOR \$25.00

Anitra
Blue Danube

Golden Hind
Exclusive

Golden Treasure
Marco Polo

Naranja
Snowking

EARLY INTERMEDIATE IRISES 25c EACH—12 for \$2.00 Prepaid

These are becoming more popular every year. Colors are very rich and pure—prices moderate. All blooms are large and fine, the plants hardy and free flowering.

ABELARD (H. P. Sass 1934) 28 in. A beautiful brown and rose red blend—one of the first to bloom. Large and fine. H. M. 1936. R. 87.

ALICE HORSEFALL (H. P. Sass 1932) 30 in. Large, dark, velvety red purple self, especially outstanding. R. 85.

CHALLENGER (J. Sass 1930) 34 in. A very deep, almost black purple with a blue tone. One of the best. H. M. 1933. R. 88.

COSETTE (H. P. Sass 1936) 32 in. A large, pure white, clear and fine. Stock of this is limited but we will include it in this collection if entire order amounts to \$5.00 or more. For single roots of Cosette we must charge 50c.

CRYSORO (Nich. 1931) 26 in. A beautiful golden yellow self. H. M. 1932. R. 90.

DOXA (H. P. Sass 1928) 26 in. A cool greenish yellow self—almost chartreuse in tone. Odd and very striking. H. M. 1928. R. 84.

GENTIUS (H. P. Sass 1934) 26 in. A grand royal purple self—deep and rich. Indispensable. Perfect with Golden Bow. H. M. 1936. R. 89.

GOLDEN BOW (H. P. Sass 1934) 30 in. The deepest yellow, large, clear and very fine. H. M. 1936. R. 90.

GOLDEN WEST (J. Sass 1934) 30 in. Another fine yellow not quite as dark but very clear and good. H. M. 1936. R. 88.

PAPIO (H. P. Sass 1936) 28 in. A very lovely color—rich pansy purple—a beauty. R. 87.

RED ELF (Nich. 1932) 26 in. An intense garnet red self—very clear and pure in color. Not rated but very good.

RED ORCHID (J. Sass 1934) 28 in. Deep violet carmine—quite red in tone. H. M. 1936. R. 89.

TA-WA (H. P. Sass 1935) 26 in. A light yellow self—the largest one of this class—very lovely. R. 86.

FALL BLOOMING IRIS 1 EACH FOR \$2.50

These are not a fad but a reality. Masses of bloom during September and early October if plants are watered a few times during a hot dry summer. They also bloom freely in early May.

AUTUMN FROST (Sch. 1934) 30 in. Large, pure white self. H. M. 1936. R. 88. \$1.00

AUTUMN HAZE (H. P. Sass 1934) 30 in. Large, manganese violet bicolor. 50c

AUTUMN KING (H. P. Sass 1924) 30 in. A very fine bright blue bicolor. 2 for 25c

AUTUMN QUEEN (H. P. Sass 1925) 26 in. A pure, clear white iris that blooms several times during the season. 25c

ELEANOR ROOSEVELT (H. P. Sass 1933) 30 in. A wonderfully rich, dark fluorite purple self—very free blooming and a great favorite. H. M. 1936. R. 89. 25c

FROST QUEEN (H. P. Sass-Hill 1935) 30 in. Another very good white—frosty and clear. 25c

GOLDEN HARVEST (J. Sass 1930) 18 in. A bronzy yellow with a bluish sheen. Very unusual in color—large and very free blooming. 25c

SANGREAL (J. Sass 1935) 28 in. A very fine light yellow self—a clear, pure color. It blooms very freely spring and fall. 25c

SEPTEMBER SKIES (H. P. Sass 1934) A very good deep blue purple self. 25c

SOUTHLAND (H. P. Sass 1934) The deepest and brightest yellow of all and perhaps the best one. A sure bloomer. 25c

ULTRA (H. P. Sass) 15 in. A brilliant blue bicolor with flaring falls. 25c

MINIATURE BEARDED IRIS COLLECTION—1 Each for \$3.00

Autumn Elf—Olive cream and lavender. Fall bloom.

Coerulea—Light blue.

Elf Queen—White self.

Laddie Boy—Blue purple.

Neola—Rose brown blend.

Marocain—Dark red purple.

Owaissa—Clear blue.

Reflection—Light blue.

Rose Mist—Rosy purple blend.

Snow Maiden—Tall white.

Sound Money—Bright yellow, blooms in the fall.

Xeno—Clear deep yellow.

Yellow Frills—Fine large yellow.

Seedlings from these fine varieties—mixed colors—25 for \$1.00, 100 for \$3.00. Fine for borders and massing, and in rock garden.

IRIS SPECIES AND HYBRIDS

We Find These Easy to Grow and Most Interesting

BALROUDOUR V. E. 12 in. An exotic, orchid flowering hybrid with soft blue, violet and olive buff coloring. Perfectly hardy and prolific. 3 for 25c

BLUE TOPAZ V. E. 12 in. A blue, green and gold medley—very unusual and charming. 25c

CRISTATA. Lovely little species only a few inches tall. It is of clear china blue—the tiny blooms about two inches across, dainty and exquisite. It loves shade and moist, rich soil. It blooms the last of May here. 3 for 25c

DICHOTOMA. The charming Vesper Iris which opens at tea time every evening in late August. Hundreds of tiny violet flowers are borne on tall 38 inch, finely branched stems. This species is from China and is perfectly hardy. 35c, 3 for \$1

GRAY CLOUD. 12 in. A hybrid of novel coloring—dawn gray with purple markings. Large ruffled flowers of orchid form and coloring. 2 for 25c

PALTEC. 24 in. A cross between I. pallida and I. tectorum, this is one of the most unusual and interesting hybrids known. The bloom is blue and similar in form to tectorum, but has both a beard and a crest. An interesting novelty which is also very pretty. \$1.00

PESHAWAR (Sch. 1937) V. E. 24 in. A pogo cyclus hybrid that has wonderful color, a rich red purple veined and dotted a still deeper shade. Perfectly hardy and easy to grow. \$1.00

SIBERICA, BLUE CHARM M. 24 in. We think this is the finest of the light blue siberians—a very large flower of clear medium toned blue. Blooms in early June. Likes some moisture and rich soil. 25c

SIBERICA, MISS DULUTH M. 30 in. A very fine dark blue self, large and tall. Blooms a little later than Blue Charm. 25c

SIBERICA, SNOWCREST M. 38 in. A beautiful pure white, taller and larger than Snow Queen. 50c

SHUSHAN. V. E. 20 in. A distinct and very attractive pogo cyclus hybrid which grows very easily, and produces a mass of dark red-violet flowers that are lovely for cutting. 2 for 25c

SPURIA, OCHROLEUCA. L. 48 in. A beautiful, tall creamy white iris species with a gold signal patch on the fall. Blooms about the middle of June. 25c

SPURIA, SUNNY DAY. L. 40 in. One of the finest of all irises. A deep, clear, pure yellow—tall and simply stunning. Blooms late in June. \$1.00

SHIRAZ. M. 36 in. A fine pogo cyclus hybrid, similar to Wm. Mohr but easier to grow. Bright violet with deeper veinings and shadings. Large, very ruffled flowers. 50c

STORMY DAWN. V. E. 16 in. Blue violet hybrid with brown markings—odd, orchid like and very attractive. 50c

WM. MOHR. A pogo cyclus hybrid that has become so well known that it is included in most general iris lists. Rosy violet with purple veinings. Very large, beautifully ruffled flowers. 25c

ZWANENBURG. V. E. 24 in. A hybrid of unusual charm and novelty. A creamy golden tan blend with bronze markings. 2 for 25c

CHOOSE 4 FOR \$5.00 OR 10 FOR \$10.00

Aline	Capri	Junaluska	Narain
Amitola	Ella Winchester	Khorasan	Ossar
Ballet Girl	Happy Days	Lady Paramount	Ozone
Beowulf	Indian Hills	Missouri	Wasatch

COLOR CONTEST

Last year we received many fine color group suggestions. The winning entries and many other good ones were sent in to the A. I. S. Bulletin. We tried out many of them in our garden. Again we offer the following prizes for the best color combinations. Send in your favorites with your orders.

1st Prize—\$3.00 in Iris. 2nd Prize—\$2.00 in Iris. 3rd Prize—\$1.00 in Iris. All winners' choice.

Last Year's Winners—1st., Snowking, Lady Paramount and Missouri; 2nd., Mary Geddes, Kalinga and Shirvan; 3rd., Pink Satin, Venus de Milo and Wedgewood.

“Who Loves A Garden—Still His Eden Keeps”

IRIS CULTURE

Iris are easy to grow but a few simple rules should be followed. They require good drainage and a reasonable amount of sunshine and cultivation. They are not very particular as to soil, but do especially well in a light sandy loam. They do not require rich soil or much water. They do well among other perennials if they do not become crowded, as they must have sun and air.

Iris should be planted when the side shoots have fully matured, which is usually a month to six weeks after blooming season. They should be set in well prepared soil with feeding roots well spread and rhizomes just barely beneath the surface of the ground. In cool, wet climates the rhizome may be set 'like a duck on the water,' but in the middle west and south they do much better covered.

They should have time to become fully established before freezing weather. Good bloom the following spring may be expected from well matured plants which make a reasonable growth in the fall. New set plants should have a light covering the first winter. We find excelsior makes an excellent protection for iris. Most leaves pack too closely and prevent a circulation of air, but light straw or hay may be used. Just enough covering to shade the soil and prevent alternate thawing and freezing is sufficient. Light airy coverings may be left on later in the spring, thus minimizing late frost injury.

Excerpts from a few of your nice letters—

From Connecticut—Your catalog is the most useful iris list I have. It gives the most definite information on each variety. Member A. I. S.

From Missouri—I congratulate you on your good catalog. I certainly am glad that there is one that gives the ratings of iris. Member A. I. S.

From North Carolina—Your plants last year were very satisfactory and bloomed well so I am sending a still larger order this year. Member A. I. S.

From Iowa—I am delighted with the iris you sent me—the roots are wonderful. Thank you for holding up shipment during heat.

From California—The plants arrived in excellent condition and I am sure will do well. You need not make excuses for the size of the rhizomes as I find them far superior to what I have been accustomed to get from eastern growers. Member A. I. S.

From Oklahoma—Received the iris in fine shape. Such a generous amount for so small a purchase price made it seem like a gift.

From Iowa—We do appreciate the very fine iris roots you sent again this year. They are wonderful rhizomes and you were most generous in filling the order.

From Nebraska—I want you to know how much we enjoyed visiting your garden on June 1st. It was the loveliest sight of flower beauty that I have ever seen. I am sending you an order and including a check for membership in the A. I. S.

From Illinois—We just received your shipment of iris roots in perfect condition. I am certainly well pleased with the healthy stock and the very prompt shipment. I also wish to thank you for your generosity.

From Idaho—Thank you for your excellent catalog. I am pleased with descriptions and I want to thank you for boosting the A. I. S. Member A. I. S.

From Nebraska—The iris arrived in fine shape—we have never received finer roots.

God made the flowers to beautify
The earth, and cheer man's careful mood;
And he is happiest who has power
To gather wisdom from a flower,
And wake his heart in every hour
To pleasant gratitude.

—Wordsworth.

There's crimson buds, and white and
blue—
The very rainbow showers
Have turned to blossoms where they fell
And sown the earth with flowers.

—Hood.



CITY OF LINCOLN

Please accept our apologies for these ruined inside plates. It is too late to make any changes.

Mrs. C. G. Whiting



MIDWEST GEM