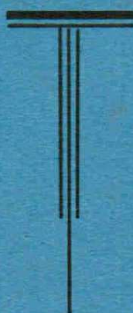


*Maple Valley
Iris Gardens*

1943



MRS. C. G. WHITING
824 Courtright Street
MAPLETON, IOWA

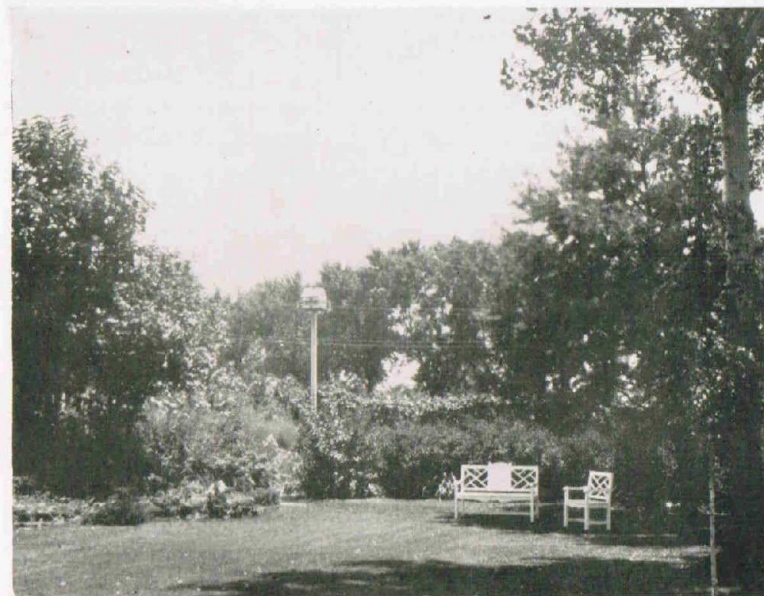
You Are Most Cordially Invited

to Visit

Maple Valley Iris Gardens

824 Courtright Street

Mapleton, Iowa



Welcome to Maple Valley Iris Gardens

Mapleton Is Located on Paved Highway 141, 40 Miles
Southeast of Sioux City and 150 Miles Northwest
of Des Moines, and on No. 35, About 90
Miles North of Council Bluffs.

Greetings—1943 . . .

We will not apologize for the smaller size of our catalog this year. Descriptions are more brief but the irises are just as lovely as ever. Our gardens bring us faith and courage—they are untouched by the difficulties and anxieties of the times.

The stage is all set for a wonderful blooming season this spring. Winter losses were light, only a few of the west coast varieties succumbed to our severe conditions of climate. Growth is good and tall buds are showing up all over the garden. Very soon the show will be on. We cannot expect as many visitors as usual, but those who can come will be very welcome.

Our new varieties chosen for 1943 introduction have all come through the winter beautifully, and it is with pride and pleasure that we present them to you. All have been thoroughly tested for hardiness and general garden behavior. All have been seen and recommended by many accredited judges of the American Iris Society. Two of them, Garden Glory (4055) and Veishea (409), received the award of Highly Commended last year. Perhaps the most exciting one, Three Oaks (4110), is named for Mrs. Lewis Jones Blake's garden and is lovingly dedicated to her. The others, although introduced at a very moderate price, are definitely outstanding in their color classes and are worthy of a place in any garden.

Terms of Sale

PLEASE READ CAREFULLY BEFORE ORDERING

ORDER EARLY—This is especially important this year. Our plants are in excellent condition, but the quantity is limited. The only way to avoid disappointment is to order early.

TERMS—CASH WITH ORDER—Check, draft or money order.

POSTAGE PREPAID on all orders of \$3.00 or more. With orders for less, add 25c for postage.

TIME OF SHIPMENT—Regular shipping begins about the second week in July. Unless specific date is requested, orders are shipped in rotation as received, beginning with that date. **PLEASE STATE TIME PREFERRED. WE DO NOT SUBSTITUTE WITHOUT YOUR PERMISSION.**

EXTRAS—WE LET YOU CHOOSE YOUR OWN—SEE PAGE 4 FOR DETAILS.

Whiting Introductions for 1943

GARDEN GLORY (Whiting 1943) (No. 4055) M. L. 33 in. A pure self of rich Bordeaux red. This seedling made us very happy, for at last we have a flower of pure, deep, rich coloring with no haft venation—a real smoothie. From The Red Douglas x Garden Magic, it combines the best qualities of both its parents. It was fun to see our guests, both garden visitors and iris judges, walk straight to it as to a magnet. Of medium size and height, it attracts and holds the attention of all because of its clear coloring, its classic form and its smoothly enameled finish. See Bul. 87, pp. 17 and 31. H. C. 1942. **\$25.00**

THREE OAKS (Whiting 1943) (No. 4110) M. 40 in. This glowing rose pink iris will, we think, be outstanding in any garden—even the garden for which it is named—"Three Oaks." The color is deep, rich mallow pink with an overlay of rosy copper. It is classed as a blend but it is almost a true rose pink self of splendid carrying quality. The blooms are very large with well domed standards and widely rounded, semiflaring falls. The plant is strong, hardy and vigorous, the stalk tall and well branched, carrying many buds. It blooms freely over a long period of time. **\$15.00**

VEISHEA (Whiting 1943) (No. 409) M. 32 in. A bright rosy copper blend with a clean blue blaze at the haft. Mr. Fishburn was in our garden the year this seedling first bloomed on a small plant. He said he wanted one for his garden whether it ever grew up or not because of its grand color. It did not grow quite as tall as we hoped it would but it developed a strong, well balanced stalk that carries the blooms without crowding. The flowers are large and full, of extremely heavy substance, and pure, rich coloring. It has wonderful landscape value and a long season of bloom. Because of its brilliance, we named it Veishea (pronounced vee-sha), the gay and colorful spring festival at Iowa State College. See Bul. 87, p. 28. H. C. 1942. R. 89, 1942. **\$10.00**

IOWA MAID (Whiting 1943) (No. 3952) M. 34 in. A charming flower of modest size and demeanor, but of excellent qualities. It is a distinct bicolor with standards of golden buff and falls of pure rose pink laid on so smoothly at the haft that it seems to have an enamel finish. The form of the flower is very pleasing, the standards are firmly domed and the falls flare crisply; the substance is exceptionally heavy. The stalk is of medium height, strong and well branched; the plant has excellent growing and blooming habits. **\$5.00**

JONQUIL (Whiting 1943) (No. 3975) M. L. 42 in. A two-toned yellow iris of distinct personality. The colors are as clear and pure as those of a jonquil, yet the flowers are very large and carried on tall stalks. The basic color is light yellow and both the widely domed standards and rounded, semiflaring falls are cleanly edged with a deeper yellow. The long buds are like tapers. See Bul. 87, p. 52. The stalks are quite high branched but the huge blooms are not crowded. It is most effective planted behind your favorite light blue iris or with long spurred columbine. The plants are very vigorous and hardy, blooming freely through the latter part of the season. R. 88, 1942. **\$5.00**

TA MING (Whiting 1943) (No. 4048) M. 35 in. A deep yellow iris with deeper, almost orange falls. If you liked Naranja you will enjoy this improved edition of it. The colors are purer and smoother, the flowers wider and of better form and substance. It comes from Matula x Naranja and we like it so well that we are using it extensively in breeding. Strong hardy plants with excellent growing habits and many well branched bloom stalks. **\$5.00**

VATICAN PURPLE (Whiting 1943) (No. 4060) A deep blue purple self of outstanding character. The color is very close to that called Vatican Purple in the Dictionary of Color. The texture is not velvety so that it neither fades nor spots; the substance is very heavy, giving the flowers a long lasting quality. The flowers are large, with cupped standards and wide, flaring falls. The strong, vigorous plants bloom freely and increase well. It comes from Missouri x Mata Hari. **\$5.00**

We will send one each of our seven 1943 introductions for **\$50.00**. This special price does not entitle you to the extras as offered with orders from the regular catalog prices.

Choice Seedlings for Sale

These are carefully selected seedlings—the ones that are next best to those we name. All others are destroyed or given to roadside plantings each year. Every year brings newer and better ones, chosen from the thousands of seedlings we grow. Order by color—we offer a complete range. You may also suggest parentage.

No. 1. VERY CHOICE. Each plant marked for color, serial number and parentage. Each **\$1.00, 6 for \$5.00**

No. 2. NEXT BEST. Marked for color. Each plant different. Each **50c, 7 for \$3.00, 12 for \$5.00**

We do not send out any that we would not be proud to have you tell your friends are —“Whiting Seedlings.”

DICTIONARY OF COLOR (Maerz and Paul, 1930) Price **\$12.00**

GOLDEN SPIKE COLLECTION

\$25.00

| | |
|---------------|---------------|
| Golden Spike | Gilt Edge |
| Annabel | Monona |
| Blue Zenith | Nylon |
| Cedar Rose | Priscilla |
| Copper Frills | Raejean |
| Dainty Bess | Rouge Bouquet |
| Daydawn | |

RUBIENT COLLECTION

\$25.00

| | |
|---------------|---------------|
| Rubient | Monona |
| Amaranth | Nylon |
| Annabel | Priscilla |
| Cedar Rose | Raejean |
| Copper Frills | Rouge Bouquet |
| Dainty Bess | Sea Blue |
| Gilt Edge | |

WHITING COLLECTIONS FOR BEGINNERS

| For \$10.00 | For \$10.00 | For \$5.00 |
|--------------|---------------|---------------|
| Golden Spike | Sea Blue | Blue Zenith |
| Cedar Rose | Cedar Rose | Gilt Edge |
| Annabel | Raejean | Nylon |
| Priscilla | Monona | Rouge Bouquet |
| | Priscilla | |
| | Copper Frills | |

These specially priced collections do not entitle the purchaser to extras as offered with the regular catalog prices.

CHOOSE YOUR EXTRAS FROM THIS LIST—TO HALF THE VALUE OF YOUR ORDER

| | | | |
|-----------------------|---------|----------------------|---------|
| Annabel | \$ 3.00 | Matula | \$ 1.00 |
| Arethusa | 5.00 | Minnie Colquit | 5.00 |
| Blue Zenith | 5.00 | Monona | 5.00 |
| Buttercup Lane | 3.50 | Nightfall | 5.00 |
| Cedar Rose | 5.00 | Priscilla | 2.00 |
| Copper Frills | 1.00 | Raejean | 3.00 |
| Frosty Blue | 10.00 | Rouge Bouquet | 3.00 |
| Gilt Edge | 3.00 | Rubient | 10.00 |
| Golden Cockerel | 1.50 | Sea Blue | 5.00 |
| Golden Spike | 10.00 | Ta Ming | 5.00 |
| Iowa Maid | 5.00 | Vatican Purple | 5.00 |
| Jonquil | 5.00 | Veishea | 10.00 |

Our Carefully Selected List of Tall Bearded Irises

We have eliminated many of the older varieties in our garden because it is more interesting to grow the newer ones. We have added some of the finest new introductions that we could get, including those just being released this year by the Sassés. We have watched these in their gardens and consider them exceptionally fine.

Although our descriptions are condensed, we have retained originators' names, date of introduction, season and height of bloom and the A. I. S. ratings and awards because so many of our customers have written us that they consider this information to be very helpful.

Nearly all of the irises we list this year have been favorably commented on in the recent American Iris Society Bulletins, so we have made reference to these notes. A large proportion of our customers are members of the A. I. S. and the others should be! We will send three fine Whiting seedlings to anyone who sends in a new membership and dues (\$3.00) to us with his order. Four splendid Bulletins are published each year, filled with up to the minute iris information.

ALBA SUPERBA (J. Sass 1943) M. 40 in. Truly a superb new white iris that J. Sass is introducing this year with this brief description—"Huge white on a well branched stem." The Sassés believe in letting their irises speak for themselves and they do. We have watched this one in their gardens for two blooming seasons and think it is by far the best white iris we have seen. See Bul. 87, p. 11. R. 91, 1942. **\$25.00**

AMARANTH (Whiting 1942) M. 36 in. A warm, rosy purple self that withstands sun, wind and rain, presenting a fresh and comely appearance during the entire season. A smooth haft, pleasing form and an enamel finish adds to its value. See Bul. 87, p. 11. R. 88, 1942. **\$5.00**

ANNABEL (Whiting 1942) M. 36 in. A clear, light blue iris that has already won many friends. See Bul. 87, pp. 11 and 54. It is not huge, but its pure coloring, neatly rounded form, firm substance and long season of bloom make it a very worthwhile addition to this class. R. 87, 1942. **\$3.00**

ARETHUSA (Gage 1940) M. 42 in. A large, tall and very striking flower of daphne red with a golden brown throat. Plants are strong and prolific. H. M. 1937. Per. R. 86, 1942. **\$5.00**

BLUE SHIMMER (J. Sass 1942) M. 38 in. This stunning new blue and white plicata has created a sensation in the iris world. It has every good quality plus a fascinating personality. "White ground, heavily but evenly marked and dotted soft bluish violet" describes it well, but when you see it you will say much more. See Bul. 87, pp. 12 and 38. H. M. 1942. R. 91, 1942. **\$15.00**

BLUE ZENITH (Whiting 1942) M. 42 in. This sky blue iris is large, tall, well branched and of clear, medium light coloring. It has been called one of the best of the new blues. It is strong growing, hardy and prolific of plants and bloom. See Bul. 87, p. 12. R. 88, 1942. **\$5.00**

BRIGHT MELODY (Snyder 1942) M. 36 in. This lovely new iris of rich Concord grape coloring is attracting much favorable comment. It is not large but the form and finish are excellent. See Bul. 87, p. 12. R. 91, 1942. **\$5.00**

BUTTERCUP LANE (D. Hall 1941) M. 31 in. This is a real find. It is a rich butter yellow of full, ruffled form, just the right height for a stunning garden effect. See Bul. 87, pp. 13, 36, 47, 52 and 67. H. M. 1940. Per. R. 88, 1941. **\$3.50**

CAROLINE BURR (K. Smith 1940). M. L. 40 in. A real aristocrat. An ivory toned iris of superb form and finish—it has that something added—charm and personality. See Bul. 82, p. 60. H. C. 1939, H. M. 1940, A. M. 1942. Per. R. 89, 1941. **\$10.00**

CEDAR ROSE (Whiting 1941) M. 36 in. This rich brown red iris of modest size and height is fast winning many friends. It has pleasing color, good form, excellent substance, fine growing habits and great garden value. See Bul. 87, pp. 13, 69 and 79. H. C. 1940, H. M. 1942, Per. R. 88, 1942. **\$5.00**

COPPER FRILLS (Whiting 1941) M. 36 in. A crisply ruffled, rosy copper self that brightens any dull corner. The flowers are not large but there are many on each stem and it blooms so freely that it soon makes an effective clump. Excellent for cutting. See Bul. 87, p. 69. **\$1.00**

COPPER PINK (Kellogg 1941) M. 38 in. Well named is this lovely pink blend with its sparkling metallic finish. Fresh and lovely as the morning. See Bul. 87, p. 14. H. M. 1942, R. 89, 1942. **\$15.00**

CORITICA (H. P. Sass 1943) M. 36 in. This is a most noteworthy yellow plicata whose delicate pattern is very distinctive. The clear yellow ground is smoothly splashed and dotted with golden brown. See Bul. 87, p. 14. **\$7.50**

DAINTY BESS (Whiting 1941) M. 15 in. This is a true table iris with small, dainty flowers and grassy foliage. The perfectly formed little sky blue blooms are borne in profusion on well branched stems. Delightful for indoor arrangements. The strong little plants increase amazingly fast. **\$1.00**

DAYDAWN (Whiting 1940) M. 38 in. An attractive blend of rose pink and gold that is a great favorite with our garden visitors. The blooms are large, gracefully formed and carried on tall, well branched stalks. H. C. 1939. **\$2.00**

DEEP VELVET (Salbach 1939) L. 38 in. An outstanding iris in any garden. This lovely, deep purple velvet beauty needs no fanfare. H. M. 1941, A. M. 1942, Per. R. 90, 1941. **\$3.50**

DISPLAY (Grant 1942) M. L. 35 in. This is one of the best new irises we saw last year. It is a near self of rich maroon red, very well formed and smoothly finished. See Bul. 87, pp. 15 and 48. H. M. 1942, R. 88, 1942. **\$15.00**

ELLA CALLIS (H. P. Sass 1942) M. 36 in. A deep, rich yellow iris heavily overlaid with orange yellow on the fall. It is clean and bright, the flowers are large and wide petaled and the plants very hardy and vigorous in growth. See Bul. 87, p. 15. R. 87, 1942. **\$15.00**

ELMOHR (Loomis 1942) M. 36 in. A gorgeous William Mohr seedling of rich mulberry purple—surely a joy to its proud parent. It grows and blooms well here, seemingly perfectly hardy and prolific. See Bul. 87, pp. 15 and 37. H. M. 1942, R. 91, 1942. **\$17.00**

ELSA SASS (H. P. Sass 1939) M. 36 in. This clear, cool, lemon yellow iris has a delightful personality not to be confused with any other. See Bul. 79, p. 2. H. M. 1939, A. M. 1941, Per. R. 89, 1940. **\$3.00**

FLORA CAMPBELL (Hill 1940) M. 36 in. This fine dark red iris is coming into its own and being highly appreciated. It is rich and glowing and does not fade. See Bul. 79, p. 24 and Bul. 87, pp. 16 and 48. H. M. 1940, Per. R. 87, 1942. **\$2.00**

FLORA ZENOR (J. Sass 1942) M. 40 in. Although just introduced last year this fascinating new pink iris is known from coast to coast. It is a distinct break in color, being almost a true crab apple pink. It is in great demand for breeding. The plants are strong and perfectly hardy, blooming and increasing freely. H. C. 1941, H. M. 1942, Per. R. 88, 1942. **\$15.00**

FROSTY BLUE (Whiting-Kellogg 1941) M. 38 in. This flower is well named and we are proud of it. It has very large, light blue flowers of excellent form and substance with a cold, frosty finish. In Bul. 87, p. 16—"Ten buds, a fine, well proportioned stem and a lovely frosty blue color," it is well described. The plants grow, bloom and increase well. R. 89, 1942. **\$10.00**

GARDEN FLAME (H. P. Sass 1941) M. L. 34 in. A rich garnet red iris that is the happy result of long years of careful breeding by that master hybridizer, Hans Sass. He likes it himself, which means it is very, very good. The color is wonderful, the form, branching and growing habits are all excellent. See Bul. 87, pp. 16 and 17. H. M. 1940, Per. R. 89, 1942. **\$10.00**

GILT EDGE (Whiting 1941) M. 38 in. This is a delightfully fresh and lovely pale creamy yellow iris. Its wide hafts are smoothly rubbed with deeper yellow which color extends around the falls in a distinct "gilt edge." See Bul. 84, p. 54 and Bul. 82, p. 63. R. 87, 1942. **\$3.00**

GOLDEN COCKEREL (Whiting-Hill 1940) M. 38 in. A clear, light yellow self of large size, excellent form, unusually firm substance and good growth. It is a sister seedling of Golden Spike. **\$1.50**

GOLDEN FLEECE (J. Sass 1940) M. 44 in. This beautiful iris is becoming a universal favorite. Its lovely lemon cream coloring is accented by deeper lemon at the haft and around the edges of the falls. Add to this its gracefully ruffled form, heavy substance, excellent branching on tall stalks and you have a flower that everyone wants. See Bul. 79, p. 13, Bul. 82, p. 36, and Bul. 87, p. 36. H. M. 1940, A. M. 1942, Per. R. 90, 1940. **\$15.00**

GOLDEN MAJESTY (Salbach 1938) M. L. 42 in. A deep golden yellow self of large size and beautiful form. It holds its own among the newer yellows and is fairly hardy here. See Bul. 87, pp. 17 and 18. H. M. 1937, A. M. 1940, Per. R. 90, 1940. **\$1.50**

GOLDEN SPIKE (Whiting 1940) M. 36 in. This rich, deep yellow self continues to receive high praise and awards. We are very proud of its behavior and its ability

to make friends wherever grown. See Bul. 79, p. 13, Bul. 82, pp. 8, 36 and 63, Bul. 83, p. 13, and Bul. 87, p. 18. H. M. 1940, A. M. 1942, Per. R. 90, 1941. **\$10.00**

GRACE BALLARD (H. P. Sass 1943) M. 36 in. A large and beautiful apricot blend from Naranja x Prairie Sunset. It has heavy substance, pleasing form and good branching. **\$10.00**

INVICTUS (D. Hall 1941) M. 38 in. A deep yellow with an orange tone, set off by strong amber markings at the throat. See Bul. 87, p. 19. H. M. 1940, Per. R. 88, 1941. **\$5.00**

LADY PRISCILLA (Gage 1942) M. 32 in. A dainty pink toned plicata, freshly frilled and most charming. R. 87, 1942. **\$3.00**

LAKE HURON (J. Sass 1942) M. 36 in. A really blue iris in the medium register where we need good blues. The color is very bright and carrying in the garden. See Bul. 87, p. 20. R. 88, 1942. **\$10.00**

LATE SUN (DeForest 1940) M. L. 42 in. This is one of the finest deep yellow irises we have seen. The flowers are large, full formed and of heavy substance, with rich, pure coloring throughout. The plant is hardy here and blooms freely. See Bul. 87, pp. 20, 36 and 51. H. M. 1942, R. 91, 1942. **\$4.00**

LOTHARIO (Schreiner 1942) M. 36 in. Truly a gay Lothario is this lovely iris of Amigo coloring. The flowers are quite large and nicely spaced on tall, well branched stems. **\$10.00**

MATTERHORN (J. Sass 1938) M. 38 in. A magnificent white iris—one of the very best. See Bul. 87, p. 53. H. M. 1938, A. M. 1940, Per. R. 89, 1940. **\$1.50**

MATULA (H. P. Sass 1939) M. L. 36 in. A glorious blending of gold, apricot and red, this fine iris gives of its splendid colorings generously to its children. H. M. 1939, Per. R. 89, 1940. **\$1.00**

MELANIE (Hill 1940) M. 45 in. This grand rosy pink iris has become very popular. Large, tall, full formed and well branched, it is a most outstanding flower. See Bul. 87, p. 21. H. M. 1941, R. 88, 1942. **\$4.00**

MELLOWGLOW (Whiting 1942) M. 38 in. This deep peach and apricot blend made many friends last year. We greatly appreciate the many nice things written about it, especially Mrs. Pollock's report in Bul. 88, page 27, in which she said it was the most beautiful iris in her garden. H. M. 1942, R. 90, 1942. **\$35.00**

MINNIE COLQUIT (H. P. Sass 1942) M. 36 in. Here is something very different and very fine. It is a clear red purple and

white plicata with a distinct border pattern. The flowers are heavily ruffled and most unusual and striking. See Bul. 87, p. 21. R. 89, 1942. **\$5.00**

MISS BISHOP (J. Sass 1942) M. 38 in. A pure, glistening white with a smooth chrome yellow haft and throat. Very distinctive and fine. See Bul. 87, p. 22. R. 88, 1942. **\$10.00**

MONONA (Whiting 1942) E. 35 in. A rich blend of heliotrope and plum purple that blooms before many of the judges visit the garden. The wide falls are edged with copper brown, and the soft, warm colors are subtly blended. Not yet rated. **\$5.00**

MOONLIGHT MADONA (J. Sass 1943) M. 36 in. A cool yellow self—Martius yellow by Ridgway, and Dictionary of Color. This means a very pale lemon yellow with a hint of green. The flower is medium large, full formed and coldly chaste. See Bul. 87, p. 36. **\$10.00**

MOONLIT SEA (J. Sass 1943) M. 35 in. Seldom has an iris attracted more attention before its introduction. A most intriguing iris to say the least. The standards are white, heavily flushed lavender violet. The falls are white, very heavily flushed lavender violet, deepening to mulberry purple on lower edge. But the stunning feature is the splash of empire yellow at the half, which looks like the moon rising from a deep blue sea. The flowers are large, beautifully formed and well carried on a widely branched stem. It is a knockout. See Bul. 87, p. 30. H. C. 1942. **\$15.00**

MOONBEAM (H. P. Sass 1943) A cool, pale lemon yellow self of beautiful form and texture. One of our favorite Sass seedlings. See Bul. 87, p. 29, under 70-40. **\$7.50**

NIGHTFALL (D. Hall 1942) A rich and lustrous beauty of deep purple tones. Very smooth and stunning. See Bul. 87, p. 22. R. 89, 1942. **\$5.00**

NYLON (Whiting 1940) M. 36 in. A rosy tan blended self, large and full formed. Per. R. 84, 1942. **\$2.00**

ORANGE FLAME (Salbach 1940) M. 36 in. A golden-orange, coppery-red blend, very bold and dashing. See Bul. 87, p. 23. Per. R. 87, 1942. **\$5.00**

OLA KALA (J. Sass 1943) M. 36 in. A grand new deep yellow self that is indeed O. K. in every way. Its size, height, purity of color, form, branching and growth are all excellent. See Bul. 87, p. 20 as 41-7. H. C. 1942. **\$20.00**

ORMOHR (Kleinsorge 1937) M. 40 in. A beautiful and fascinating hybrid that everyone loves. H. M. 1939, A. M. 1940. Per. R. 89, 1939. **\$1.00**

PERSIAN PRINCE (H. P. Sass 1941) M. 36 in. A large, tall and brilliant variegata, one of the very best. See Bul. 87, p. 23, H. M. 1942, R. 89, 1942. **\$7.50**

PRAIRIE SUNSET (H. P. Sass 1939) M. 36 in. The iris that everyone loves and wants. A glorious blend of rose and gold—beautiful in any light. H. M. 1937, A. M. 1941. Per. R. 93, 1939. **\$6.00**

PRISCILLA (Whiting 1942) M. 24 in. The whitest iris we have seen—it is not large nor tall but we think it is very lovely and we appreciate the many nice things that have been written about it. See Bul. 87, pp. 23, 33 and 68. R. 89, 1942. **\$2.00**

RAEJEAN (Whiting 1940) L. 38 in. This large, late, two-toned yellow is still one of our favorites. The deep yellow edge on the falls gives it great distinction. See Bul. 87, p. 36. H. M. 1942, R. 88, 1942. **\$3.00**

ROSE TOP (H. P. Sass 1943) A very large, tall and outstanding pink plicata. It is heavily marked rosy pink on a cream white ground. **\$20.00**

ROUGE BOUQUET (Whiting 1941) M. 36 in. A large and richly colored dark red iris—one you will like year after year. R. 87, 1942. **\$3.00**

RUBIENT (Whiting 1942) M. 36 in. A velvety pansy purple iris of unusual charm. It has been called "an Amigo done in reds," and this is quite an apt description. The standards are deep red purple, the falls are almost black velvet edged with the purple of the stands. See Bul. 87, pp. 24 and 37. R. 89, 1942. **\$10.00**

RUTH POLLOCK (H. P. Sass 1939) M. 36 in. One of the finest of the yellow plicatas with heavy markings of rich maroon. H. M. 1939, A. M. 1941. Per. R. 90, 1940. **\$2.50**

SABLE (Cook 1938) M. 40 in. Still one of the very finest of the dark irises. It is a rich black purple self, very lustrous. H. M. 1937, A. M. 1940, Per. R. 90, 1940. **\$1.50**

SAMOVAR (D. Hall 1941) M. E. 34 in. A lovely coppery burnt orange iris that is a great favorite. H. M. 1941, R. 86, 1942. **\$3.50**

SEA BLUE (Whiting 1941) M. 38 in. A large, tall and thoroughly satisfactory light blue self, clear and fine in color. R. 86, 1942. **\$5.00**

SHANNOPIN (Pillow 1940) M. 48 in. A rich, creamy iris heavily flushed with pink. R. 88, 1942. **\$3.50**

SNOW DROP (G. Douglas 1942) L. 30 in. A fine, low growing, free blooming white iris for the front of the border. See Bul. 87, p. 47. H. C. 1941, R. 87, 1942. **\$2.50**

SNOW VELVET (H. P. Sass 1942) M. 40 in. An excellent white iris of very heavy substance, velvety texture and exceptional weather resistance. Large and beautiful. See Bul. 87, pp. 26 and 68. H. M. 1942, R. 89, 1942. **\$5.00**

SPUN GOLD (Glutzbeck 1940) M. 38 in. A deep and brilliant yellow with a touch of velvet on the falls. A top notch yellow in every way. See Bul. 87, pp. 26 and 51. H. M. 1939, A. M. 1942, Per. R. 91, 1941. **\$10.00**

STARDOM (D. Hall 1941) M. 34 in. A smooth, warm blend of tawny apricot and copper—luscious. See Bul. 87, pp. 26, 49 and 50. H. M. 1940, Per. R. 89, 1940. **\$3.50**

STELLA POLARIS (K. Smith 1939) M. 42 in. A large, cool white of excellent form and substance and wonderful branching. See Bul. 87, p. 45. H. M. 1939, Per. R. 89, 1940. **\$5.00**

STORM KING (Nicholls 1940) L. 42 in. One of the smoothest and best of the dark irises, of great brilliance and garden value. Late and fine. See Bul. 87, p. 38. H. M. 1941, R. 90, 1941. **\$5.00**

SUNDANCE (Nesmith 1940) L. 40 in. A medley of strong and vibrant colors from golden tan to red mahogany. See Bul. 87, p. 26. H. M. 1940, Per. R. 88, 1941. **\$3.50**

SUNSET SERANADE (J. Sass 1943) M. 36 in. "A soft, golden tan. S. apricot buff, F. orange vinaceous, yellow beard. Large flowers on 36 in. well branched stems."—From Sass list 1943. How modest the Sasses are. This is the lovely golden blend that has been chosen from hundreds of Prairie Sunset seedlings as worthy of its famous parent. Truly a grand iris. See Bul. 87, p. 27. H. C. 1942, R. 91, 1942. **\$20.00**

THE ADMIRAL (D. Hall 1941) M. 37 in. A clean, bright medium blue self that answers the call for garden color value. See Bul. 87, pp. 27 and 54. H. M. 1940, R. 88, 1942. **\$3.50**

TISHOMINGO (W. Caldwell 1942) M. L. 42 in. A large, clear wistaria blue self—a most outstanding new introduction. See Bul. 87, pp. 27 and 54. H. M. 1942, R. 90, 1942. **\$10.00**

WEST POINT (Nicholls 1939) L. 44 in. A splendid iris of great value in the late garden for its brilliant color, and all round excellent habits. See Bul. 87, p. 70. H. M. 1940, Per. R. 89, 1941. **\$3.00**



Maple Valley Iris Gardens : Mapleton, Iowa

ADVANCE SPECIALS SPRING 1944
 Fine New Varieties in Complete Color Range

- BLUE ZENITH** (Whiting 1942) Large, clear blue.
- COPPER FRILLS** (Whiting 1941) Ruffled Copper blend.
- GILT EDGE** (Whiting 1941) Large yellow, deeper at edge.
- MONONA** (Whiting 1942) Rich Plum purple.
- PRISCILLA** (Whiting 1942) Purest white iris.
- ROUGE BOUQUET** (Whiting 1941) Large maroon red.
- PERSIAN PRINCE** (Sass 1941) Brilliant variegata.

\$15.00 1944 Catalog Value for **\$5.00 POSTPAID**

ORDER AT ONCE!! No orders accepted after June 1.

All roots to be shipped early in July, 1944.

Alternates - Raejean, Sea Blue, Jonquil

"Who loves a garden still his Eden Keeps"

SPECIAL 10% DISCOUNT

On All Orders Over \$2.00 Received Before July 1st

SEND YOUR ORDER NOW!

ORDER SHEET

Maple Valley IRIS Gardens

Mapleton, Iowa

Please Send to _____ Date _____ 19__

Name _____
(Mark Prefix Mr., Mrs. or Miss)

R. F. D. or Street No. _____

City _____ State _____

Amount Enclosed \$ _____

| Quantity | VARIETY | Amount |
|----------|---------|--------|
| | | |
| | | |
| | | |
| | | |
| | | |
| | | |
| | | |
| | | |
| | | |
| | | |

To Our Customers

Please Read Before Ordering

For orders of less than \$2.00 add 50c for packing and postage.

All orders are made for any variety that are sold out, unless special choice is mentioned.

GUARANTEE: We make every effort to keep our stock fresh to date; if an error occurs, please notify us and restitution will be made. Good condition upon arrival is guaranteed, but we cannot assume any responsibility for the condition of the plants after they are received.

(Continue order on other side)



POSTCARD



Mr. E. L. Hodson

*470 Greenfield Ave
Glen Ellyn
Illinois*

| Quantity | VARIETY | Amount |
|----------|---------|--------|
| | | |
| | | |
| | | |
| | | |
| | | |
| | | |
| | | |
| | | |
| | | |
| | | |
| | | |
| | | |
| | | |
| | | |
| | | |
| | | |
| | | |
| | | |
| | | |
| | | |

To Our Customers

Please Read Before Ordering

For Orders of Less than \$2.00, add 15c for Packing and Postage

REFUNDS are made for any varieties that are sold out, unless second choice is mentioned.

GUARANTEE. We make every effort to keep our stock true to name; if an error occurs, please notify us and restitution will be made. Good condition upon arrival is guaranteed, but we cannot accept any responsibility for the results of planting.