

Fairmount Gardens

LOWELL, MASSACHUSETTS

1
9
5
1

IRISES

HEMEROCALLIS

HOSTAS

POPPIES



Photo by CASSEBEER

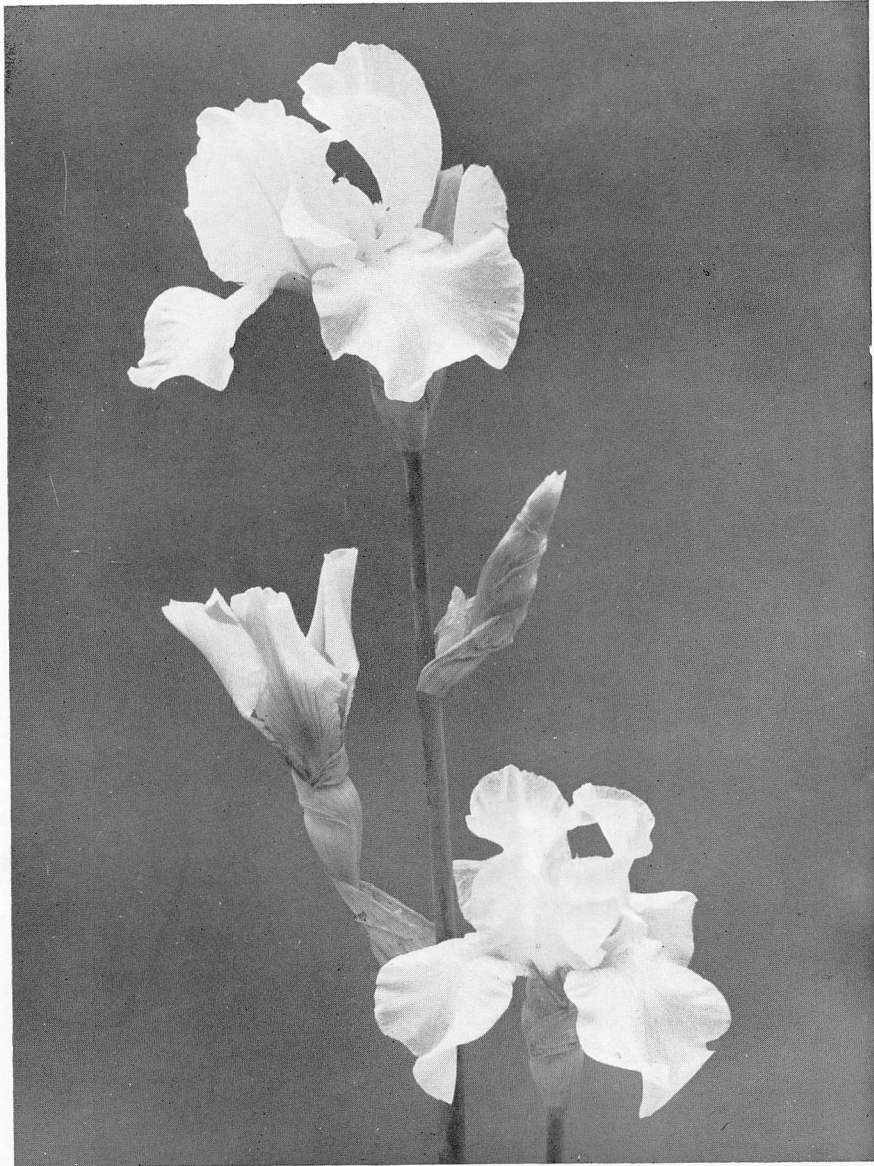


Photo by DOWNWARD

SARAH LEE SHIELDS

Foreword

GREETINGS FOR 1951

Winter has departed, Spring is with us. It is time to turn to our gardens for they provide a haven from the strife and ambitions of this unsettled world.

Gardening is a safe and sane hobby that soothes tired nerves. Not only is there a sense of calm and peace, but we have that good earthy feeling that comes from working in the soil. So join me in a hearty welcome to Spring and the garden.

Again I call your attention to the fact that since our first catalogue was issued three iris that have been introduced by Fairmount Gardens have won the Dykes Medal, the highest honor that can be given an iris. They are: Mary Geddes 1936; Chivalry 1944; and Helen McGregor 1949. This shows the care and discrimination we use in choosing iris to be introduced by Fairmount Gardens.

This year we are introducing several iris and hemerocallis from prominent hybridizers. These are distinctive both in color and garden value and have been tested in our garden. We consider these varieties very worthy of introduction.

All the many friends of the late Dr. Robert J. Graves will be heartened to learn that last summer he spent a most happy iris season with his beloved flowers. The iris beds were full to overflowing with beautiful outstanding seedlings and his enthusiasm was in his old time spirit, yet as always he was very critical in his selection of those to save for further observation. However, there are so many fine seedlings that we will be able to continue the introduction of his iris for several years to come. This year two iris of Dr. Graves were chosen for introduction that are of exceptional merit. Sarah Lee Shields, a magnificent white that was named for a little girl who is a direct descendant of General Robert E. Lee. It received the award of Highly Commended in 1946. The other is named Kiki, a self of deeper blue than Helen McGregor, one of its parents, it has inherited many fine qualities of this famous iris as well as being taller and better branched.

For Mrs. Lillian Hall Trichel of Shreveport, La. we have the pleasure of introducing in 1951 four of her hybrid Louisiana iris and two collected varieties. They are: Susie Kline, a large crested mauve; Haile Selassie II, a very rich maroon; Lillian Bouldin, brilliant tan and pink; Emma Sample, bright rosy pink; Pearl River White Virginica, a lovely pure white; Giant Yellow Abbeville Iris with creamy yellow blooms. These iris are thoroughly hardy in New England. Last year we introduced three of Mrs. Trichel's iris and Caddo not only won Honorable Mention from the A. I. S. but was voted The Mary Swords Debaillon Award, the highest honor that can be given a Louisiana Beardless Iris.

Our American Iris Society Vice-President Mr. Harold W. Knowlton of Auburndale, Mass. leads a busy life, and sometimes I wonder how he finds time to hybridize, but he most certainly does as demonstrated by the two delightful iris we are introducing this year. The very ruffled flowers of Chiquita are done in Amoena colors with almost white standards, and white bordered velvety purple falls. It was given the award of Highly Commended in 1949. Kezar Lake is a clear blue, the large flowers have an almost enameled finish and well merits the Highly Commended award in 1948.

Mr. H. F. Hall of Moorestown, N. J. a noted hybridizer in horticultural fields has done extensive work in breeding many kinds of iris, and this year we are introducing for him a very fine and unusual Siberian iris named Royal Ensign. It is a rich lilac purple with a blue blaze in the center of the flower.

From the hand of Mr. Geddes Douglas of Nashville, Tennessee, we are presenting four very handsome iris and one hemerocallis. Criterion is one of his famous Amoenas, that is not only beautiful but also a very fine parent; Pagan Gold, a large rich yellow with heavy substance and velvety finish, it was given the Highly Commended award in 1948; Pagan Sunset is a most colorful blend of rose, golden orange, and copper; Pagan Royal is a big broad flower of deep red-violet that always attracts the attention of garden visitors and won a Highly Commended award in 1948. His hemerocallis introduction for this year is Georgia Belle a luscious peach pink blend.

This year I am introducing five of my own Bearded iris. I have watched these iris for several years and feel they are very worthy of introduction: Black Satin as the name implies is a very black smoothly finished flower that won the Highly Commended award in 1949; Magic Sails has a large rounded bloom of light flax blue that has been highly praised by garden visitors; Summer Song is a rich glowing orange buff of flaring form and great garden value and received the award of Highly Commended in 1950; Belvidere, named for our residential section of Lowell, is a self of brilliant copper, larger and richer than Bryce Canyon; Desert Dusk is late flowering and usually is not in bloom when the A. I. S. Judges visit the garden, but it is a very handsome blend of brown, tan, and purple.

The Hemerocallis Introductions for 1951 follow the Iris Introductions. All of these have been selected with great care from hundreds of seedlings and tested for hardiness and garden value. I feel certain they will meet with your approval.

The Hemerocallis Society has instituted a system of Awards in addition to the Official Popularity Poll of the first hundred. In the catalogue these awards are noted following the description of those receiving such awards.

We have omitted detailed descriptions of many well known iris for our government has asked us to conserve paper.

Many of our hemerocallis introductions are included in a set of Kodachrome slides available for rent from Dr. Philip G. Corliss, Somerton, Arizona. If you are interested write him direct for details.

You are cordially invited to visit the garden at any time that suits your convenience. If you are unable to do so, and feel you need advice about varieties to choose, write me and I shall use the same care as if I were selecting for my own garden.

Lowell is about 26 miles from Boston. Coming from Boston to Lowell on Route 38, at the Oakland Fire Station (near the outskirts of the city) turn off on to Fairmount Street and at the top of the hill you will find Fairmount Gardens. Anyone coming to Lowell on other routes should ask for Nesmith Street on which you will find Route 38, and then follow above directions.

There are express trains from Boston to Lowell with taxi service from the station to FAIRMOUNT GARDENS.

Our Exhibition Garden is located at 166 Fairmount Street, Lowell, Mass. and our telephone number is Lowell 2-5121.

Please Read Before Ordering

ORDER EARLY to avoid possibility of certain varieties being sold out. We make no substitution of varieties, unless second choice is given, and if stock is sold out, refund will be made.

TERMS are Cash with Order, Check, Draft, or Money Order. We allow 10% discount on each order over \$30.00. This discount does not apply to collections which are strictly NET.

POSTAGE is paid on all Retail Orders in the U. S. A. that amount to \$3.00 or over. On smaller orders add 35 cents for packing and postage.

We guarantee good healthy stock, true to name, and that it reaches you in good condition, but we cannot guarantee the growth in your garden. If plants do not arrive in good condition return them to us at once, and restitution will be made either by supplying stock or cash refund whichever we deem best. Any error on our part will be carefully corrected for our success depends upon your satisfaction.

We reserve the right to accept or refuse an order or any part thereof, depending on quantity of stock and whether at shipping time it is in good condition to be sent.

SHIPMENTS: We commence filling Bearded Iris orders about July 15th, and from then on until early October. Beardless Iris, Oriental Poppies, Hostas, and Hemerocallis are best shipped in late summer and autumn.

DEFINITIONS OF INITIALS USED IN CATALOGUE

E.—Early.

L.—Late.

H. C., A. I. S. is Highly Commended by American Iris Society.

H. M., A. I. S. is Honorable Mention, American Iris Society.

A. M., A. I. S. is Award of Merit, American Iris Society.

A. M., R. H. S. is Award of Merit, Royal Horticultural Society.

H. C., T. H. S. is Highly Commended by The Hemerocallis Society.

H. M., T. H. S. is Honorable Mention by The Hemerocallis Society.

A. M., T. H. S. is Award of Merit by The Hemerocallis Society.

M.—Midseason.

V. L.—Very Late.

SECOND EDITION OF THE BOOK "THE IRIS"

Well bound and illustrated, it is a most useful book, for the casual gardener as well as the iris enthusiast. Prices of the book: Permanent Binding \$2.50. Paper Binding \$1.50. Books and membership may be obtained through us or the AMERICAN IRIS SOCIETY.

JOIN THE AMERICAN IRIS SOCIETY

Four bulletins are issued each year, which are filled with valuable information. Yearly membership fee \$3.50.

For each new member joining the American Iris Society through us and sending the membership fee of \$3.50 we will

send free iris to the value of \$3.50 with your order; give several suggestions as to the free iris you wish. Checks for membership and book made out payable to THE AMERICAN IRIS SOCIETY.

JOIN THE HEMEROCALLIS SOCIETY

They issue a year book and several Newsletters during the year filled with valuable information. For each new member joining the Hemerocallis Society through us and sending the membership fee of \$3.00 we will send free hemerocallis to the value of \$3.00 with your order; give several suggestions as to the free hemerocallis you wish. Checks for membership made out payable to, THE HEMEROCALLIS SOCIETY.

FAIRMOUNT GARDENS

MRS. THOMAS NESMITH

166 FAIRMOUNT STREET, LOWELL, MASS.

TELEPHONE LOWELL 2-5121

I N D E X

FOREWORD	Page 1	HEMEROCALLIS	
IRIS		Introductions for 1951	Page 5
Introductions for 1951	Page 3	Hemerocallis	Page 20
A Selected List of Bearded Iris	Page 6	Hemerocallis, well known varieties, Especially Priced	Page 25
Special List of Well Known Bearded Iris	Page 16	Hemerocallis Society Symposium	Page 26
Apogon Iris	Page 17	ORIENTAL POPPIES	Page 27
Siberian Iris	Page 18	HOSTAS	Page 28
Evansia and Vernal Iris	Page 19	COLLECTIONS	Pages 15-28
Spuria Iris	Page 19		
American Iris Society Symposium	Page 26		
One Hundred Best Iris for 1951	Page 27		

Introductions for 1951

The following Iris and Hemerocallis are introduced by Fairmount Gardens

BEARDED IRIS

BLACK SATIN (Nesmith 1951) M. The darkest blue-black iris that I have ever seen. The nearest color in the Wilson Horticultural Chart is aconite violet 937, but even this is not as deep or as blue-black as Black Satin. A self even to the beard, yet it is not a somber iris for it has a very satiny smooth finish and its depth of color always attracts the attention of garden visitors. The standards are closely held by the strong midrib; the falls are very flaring and seem dusted with black crystals. It does not fade under most trying weather conditions. This iris under number 46-55A has been highly praised by A. I. S. Judges ever since its first flowering and received the Highly Commended award in 1949. Eight flowers on three way branching stalks. Stock limited, only one to a customer. H. C., A. I. S. 1949. 36 in. \$20.00

MAGIC SAILS (Nesmith 1951) E. M. Many will remember this light flax blue iris (642/3 Wilson Horticultural Chart) as it bloomed in 1949 in our garden. A huge rounded flower of very pale blue with especially strong firm substance. A cross of Helen McGregor and St. Regis, it has inherited many fine qualities from both parents, and has been greatly admired by many A. I. S. judges. A self with the exception of the beard which is very pale yellow heavily tipped with white. The whole slightly ruffled flower has a silvery lustre not found in many pale blue iris. This seedling was very accurately described by Mr. Dolman in the Oct. 1949 A. I. S. Bulletin and has lived up to the praise given it on page 46. The flowering stalk is sturdy with good branching, the foliage clean and the growth vigorous. 38 in. \$15.00

SUMMER SONG (Nesmith 1951) M. Brilliant and glowing this iris has great carrying qualities in the garden. A self of very deep orange buff (No. 507 Wilson Horticultural Chart) with perfect flaring form. The standards are domed and closely held; the heavy substanced falls are almost horizontal and the rich orange buff beard adds depth of color to the flower. The glowing luminous flowers seem dusted with gleaming particles of deep gold. The exceptional lasting qualities of the flowers kept them in perfect condition for three days when many iris in the garden were torn and broken by our terrific winds at the height of the 1950 iris season. This iris under No. 45-30M was the center of attention in our garden in 1950 and received the award of Highly Commended. The color is lighter than Rocket but it is a more glowing flower and does not fade as do so many iris when under the hot sun. Three branches and terminal, 8 to 10 blooms. Sturdy stalks and it increases rapidly. H. C., A. I. S. 1950. 39 in. \$20.00

SARAH LEE SHIELDS (Graves 1951) M. This beautiful pure white is a child of the famous white, Lady Boscawen, but it is taller, better branched and much more ruffled. The standards are cupped and closed, the falls flaring. The heavy ruffling gives the blooms a light airy appearance that is most pleasing. In New England we have the habit of putting a red tag on iris that we think especially good—and in 1946 when we had the National Meeting of the American Iris Society in New England twenty-seven red tags of approval were placed on the blooming stalks of this iris by the A. I. S. judges from all over this country, thus showing the sensation it caused at that time. The Award of Highly Commended was given it in 1946. This iris has been highly praised in England and is up for trial and award at Wisley. Firm substanced flowers, and sturdy well branched stalks, a distinctive white of great charm and refinement. H. C., A. I. S. 1946. 40 in. \$20.00

KIKI (Graves 1951) M. Among the many fine blue iris created by the late Dr. Graves and Edward Watkins, this clear blue was selected by them as having distinctive merit. This descendant of the iris, Helen McGregor, is a much deeper blue with great clarity of color and over all there is a frosty sheen that sparkles and glistens in the sunlight. The flowers are medium blue with broad domed standards and beautifully formed flaring falls. A self of deeper tone than Jane Phillips, it has the characteristic touch of refinement that Helen McGregor passes on to her progeny. Today there are many blue iris, but Kiki represents a distinct step forward in the breeding of finer blues. A captivating flower of great garden value. 8 to 10 heavy substanced flowers on sturdy well branched stalks. 39 in. \$20.00

PAGAN SUNSET (G. Douglas 1951) M. It is difficult to convey in words an adequate description of this iris. Golden orange, rose, apricot and copper are mingled to form a blending of the colors we see in a rosy sunset. The standards are extremely broad and domed with a full ruffling at the edges. The falls are flaring and fluted at the tips. Although it is not an extremely tall iris, the branching and arrangement of the flowers is exceptionally good so that there is no crowding on the sturdy stalks; three branches and terminal. Charming in its blended colors the blooms have balance and beauty to a marked degree. 34 in. \$15.00

CRITERION (G. Douglas 1951) M. L. Mr. Douglas has been very successful in producing fine amoenas and this one lives up to the high standard he has set in selecting seedlings for introduction. The well domed standards are white, faintly veined with very pale blue; the semi-flaring falls are clear blue-violet with a distinct edging of white in sharp contrast to the center of the falls. A prolific bloomer, it is the best amoena that Mr. Douglas has developed from the standpoint of breeding, for it sets seeds both ways and its seedlings have proved to be better than those from any other line of amoena breeding. The firm substanced flowers are carried on strong, especially well branched stalks; four branches and terminal with 9 to 14 buds. A great addition to the amoena class. 38 in. \$20.00

PAGAN GOLD (G. Douglas 1951) M. L. Many will remember this deep gleaming gold iris that was blooming in the Douglas garden at the time of the Nashville A. I. S. National Meeting. A very large flower of heavy substance and almost velvety finish, it has been greatly admired in our garden as well as in Nashville, and many iris enthusiasts have been eagerly awaiting its introduction. A self of rich clear yellow with broad cupped standards and wide flaring falls that seem a tone deeper on account of their velvety texture. A noteworthy iris that received the award of Highly Commended in 1948. 8 to 10 flowers on well branched sturdy stalks. H. C., A. I. S. 1948. 40 in. \$15.00

PAGAN ROYAL (G. Douglas 1951) M. Some iris are especially good for garden value in that their rich coloring stands out from afar. Such an iris is Pagan Royal with its big bold flowers of deep red-violet. A self with broad domed standards and large flaring rounded falls. The flower gives the effect of a glowing rich purple that is vivid and different from other dark purple iris, thus making it a good accent in garden planting. The branching and the placement of the blooms is excellent; four branches and terminal with 10 to 12 buds on each strong sturdy stalk. H. C., A. I. S. 1948. 40 in. \$15.00

CHIQUITA (Knowlton 1951) L. This iris has been greatly admired by garden visitors ever since its first flowering, and in 1949 received the award of Highly Commended. The color pattern is similar to that of Amigo and Louise Blake, but the blooms are larger and more brilliant with the flowering stalks taller and much better branched. The very pale blue-lavender standards are closed and firmly held; the flaring deep velvety blue-purple falls are distinctly embroidered at the edges with the same almost white color of the standards. The firm textured flowers are exquisitely ruffled on both standards and falls. Few iris have the charm and grace of this late flowering near Amoena. H. C., A. I. S. 1949. 36 in. \$15.00

KEZAR LAKE (Knowlton 1951) M. A clear medium blue that was named for the beautiful Maine lake where for many years the Knowltons spent their summers. The first time I saw this iris I was impressed by the blueness of its color. A self with large flowers that is more blue and without the self veining that is found in Great Lakes, one of its parents. The wide standards are domed and firmly held by the strong midrib; the rounded falls are broad and flaring with a slight fluting at the edges. The flowers seem to have an almost enameled finish and that certain something which makes an iris distinctive. Tall with almost perfect branching, this iris withstands rain, sun and wind unusually well. Four branches and terminal with 8 to 10 buds. H. C., A. I. S. 1948. 38 in. \$15.00

DESERT DUSK (Nesmith 1951) M. L. A richly colored blend of Vassar Tan and Kaiser Brown (Maerz and Paul) enlivened by the rhododendron blaze on the falls. The standards are firm and closely held of lighter tone than the falls. The deep bronzy brown semi-flaring falls are set off by the iridescent purple surrounding the rich yellow beard. The flowers have very firm substance and the stalks are strong and especially well branched. An iris that commands attention in the garden. Late and long season of bloom. This iris increases rapidly and in consequence I am able to offer it at a moderate price. 10 or more blooms, 4 branches and terminal. 40 in. \$8.00

BELVIDERE (Nesmith 1951) M. A self of brilliant copper tones larger and much richer in color than Bryce Canyon, one of its parents. The standards are roundly domed and firmly held and are just a shade lighter than the flaring falls. Throughout the flower there is a flush of reddish bronze that adds to its carrying qualities in the garden. Beard deep bronzy yellow. A very handsome iris with firm substantanced flowers. 8 to 10 flowers, 3 branches and terminal. 40 in. \$10.00

BEARDLESS IRIS INTRODUCTIONS



LOUISIANA IRIS INTRODUCTIONS FOR 1951

SUSIE KLINE (Trichel 1951.) This beautiful iris was named for Mrs. Susie F. Kline an eminent garden authority in Northern Louisiana, and under the name Big Crest Mauve was greatly admired by Mrs. Guy Rogers, and mentioned in her article "Meeting at Lafayette" in the July 1950 A. I. S. Bulletin. The flowers are clear rose-mauve with a wide triangular gold signal patch. The blooms are large, of firm texture, measuring 5 in. or more across and are carried on tall sturdy stalks. 35 in. \$8.00

HAILE SELASSIE II (Trichel 1951) Dark, rich, and handsome this very deep maroon is even more brilliant than its parents Haile Selassie and Dark Mystery (an almost black seedling) and combines the good qualities of both. The flower is a self with the very velvety broad sepals enlivened by the intense gold signal patch. Full open flowers on erect stems, it is free flowering and increases rapidly. 34 in. \$7.00

LILLIAN BOULDIN (Trichel 1951). Chosen by Mrs. Trichel's daughter to bear her name, this rich tan pink is so full of brilliant warm glowing tones that it stands out in any planting. The dominant colors are deep salmon and golden tan with the 5 in. flowers well spaced on stalks that rise above the foliage. 35 in. \$5.00

EMMA SAMPLE (Trichel 1951) Pink or rose flowers always attract attention in the garden, and it is especially true

of this bright rose iris set off by a very showy gold signal. Tall with evenly spaced pretty flowers held well above the foliage. 39 in. \$6.00

PEARL RIVER WHITE VIRGINICA. A collected iris that Mrs. Mary DeBaillon first sent to Mrs. Trichel. It has received so much favorable comment that Mrs. Trichel and I think it should be introduced to the public. A pure white that Mr. Geddes Douglas said is the most beautiful and impressive white beardless iris that he has seen. 26 in. \$5.00

GIANT YELLOW ABBEVILLE IRIS. These are collected iris of soft creamy yellow coming from a group of Louisiana iris with lush foliage and strong, well branched stalks. The broad flowers rise well above the foliage and are most attractive. 40 in. \$8.00

SIBERIAN IRIS INTRODUCTION FOR 1951

ROYAL ENSIGN (H. F. Hall 1951) Bright flowers that carry well are always welcome in the garden, and this stunning new Siberian has great life and beauty in its unusual combination of color. The standards are lilac purple (No. 031), erect and firm, the rounded falls are the same color as the standards with a sea blue area (No. 043) in the heart of the flower. Full firm substantanced flowers and excellent branching. A very brilliant iris that is a valuable addition to the Siberian group. 38 in. \$8.00

Hemerocallis
Introductions
 for
 1951

Colors taken from Wilson
 Horticultural Colour Chart



GEORGIA BELLE (G. Douglas 1951). The luscious coloring of a rosy peach best describes this delightful hemerocallis. The sepals are Spanish orange (No. 10/3) and are very smoothly finished. The petals have an undercolor of this same orange with an overflush of current red (No. 821/2) on the upper part. An open recurving full flower that gives the effect of a rosy peach bordered with buff. A very free bloomer that makes a lovely clump in the garden. 25 buds on graceful nodding stalks. July-Aug. 40 in. **\$7.50**

RESPLENDENT 48-31A (Nesmith 1951) The name is most descriptive of this big, bold flower. The deep velvety red petals of chrysanthemum crimson (No. 824) are broad and semi-curving. The sepals are the same color made more brilliant by the wide deep yellow midrib that extends into the shallow orange cup. A great favorite with garden visitors. Tall sturdy stalks with 25 or more buds. Semi-evergreen. July-Aug. 40 in. **\$8.00**

SIGNAL FIRE 46-6 (Nesmith 1951) Deep and rich in color, this hemerocallis has an exceptionally long season of bloom. A self of Indian lake (No. 826) with a deeper halo of purple madder (No. 1028) just above the tiny orange cup. The glowing flowers have broad petals, lightly fluted at the edges; the sepals are the same color and very smoothly finished, even the stamens are the same intense red. The strong stalks are especially well branched with 30 or more buds. It commences to flower the last of June and continues to throw out bloom until well into August. June-Aug. 39 in. **\$10.00**

PIRATE'S TREASURE 45-85A (Nesmith 1951) A very brilliant flower with the basic color Saturn red (13/2) flushed with Dutch vermilion (717/3) extending into the Saturn red cup. A descendant of Bloodroot and Royal Ruby, it has much larger flowers carrying the general color of Bloodroot, deepening into a flush and venations of Royal Ruby tones. The blooms are broad and recurving with very ruffled petals and especially well branched stalks. 35 to 40 buds. Semi-deciduous. 38 in. July 15-Aug. 25 **\$10.00**

HONEY BEIGE 46-252 (Nesmith 1951) A honey and terra cotta blend of lovely color harmony. The large full formed flowers have petals of burnt orange (No. 013/1) lightly ruffled at the edges. The sepals are majolica yellow (No. 09/2) and are slightly reflexed at the tips. The color is similar to Windsor Tan but the effect is that of a blended bicolor. Tall sturdy stalks with 25 or more buds. July-Aug. 39 in. **\$7.50**

BON JOUR 45-1E (Nesmith 1951) Deeper in color than Pink Prelude, one of its parents, this jasper red (No. 018/2) gives a very rosy effect in the garden. The petals are broad and fluted at the tips; the sepals are smoothly finished except for a narrow ruffled border. A large full flower with a deeper rose halo just above the cool yellow cup that accentuates the beauty of the flower. 30 to 35 buds on strong well branched stalks. July-Aug. 38 in. **\$8.00**

ANTIQUÉ VELVET 47-40 (Nesmith 1951) A lily-like flower of velvety maroon (No. 931) with reflexed petals and sepals above a green gold throat. An unusual flower in color pattern, I have found it excellent for flower arrangement on account of the sharp contrast between the lustrous dark petals and the cool green center. Well branched stalks with 30 buds. July-Aug. 46 in. **\$5.00**

SAMOSET 46-142 (Nesmith 1951) A very velvety flower of deep oxblood red (No. 00823) with petals and sepals recurving to form a graceful lily. The ruffled petals have a tiny hair-line stripe of yellow in the center extending into the rich yellow cup. The sepals are smoothly finished. Stamens oxblood red. Late blooming with 25 or more buds on well branched strong stalks. Aug.-Sept. 40 in. **\$6.00**

PETITE MIGNON 48-67 (Nesmith 1951) A self of clear Chinese yellow (No. 606) with recurving petals and sepals. An open full flower of multiflora parentage, it has strong firm substance and is lovely in the garden as well as being especially suited to flower arrangement. 35 to 40 buds on widely branched stalks. 48 in. **\$5.00**

NECTARINE 48-63 (Nesmith 1951) Rich and glowing, this cadmium orange (No. 8/1) has great garden value on account of its long season of bloom. A perfect self of flaring cup-shaped form with wide high branching, it is well adapted to back of the border planting, and is lovely when used as a cut flower in the house. Tall with 45 to 50 buds. July 15-Aug. 30. **\$5.00**

FAIRY GOLD 48-38 (Nesmith 1951) A delectable small flowered variety of Egyptian buff (No. 407) that gives the color effect of a rich ripe cantaloupe. An absolute self even to the center of the bloom. Firm substance flowers on slender but strong, widely branched stalks. Fairy Gold, Nectarine, and Petite Mignon used together in flower arrangement make a combination that will delight the eye of anyone looking for a lovely harmony of color. 30 to 40 buds. 47 in. **\$5.00**

A Selected List of Bearded Iris



ADMIRAL NIMITZ (Graves 1948) M. An iris of quality and a gem in purity of color. The flowers are large, suggesting a naval officer in white with his rich gold shoulder ornaments. The crisp firm flowers with closely domed standards, and semi-flaring falls are heavy substanced. The spacing of the blooms on the well branched stalk is excellent. Healthy, hardy growth. H. M., A. I. S. 1948. 42 in. **\$5.00**

AFAR (Lapham 1948) E. M. An iris that is well named for the bright orange sherbet coloring stands out from a distance in the garden. Medium sized blooms with good branching. It has great color appeal. 34 in. **\$5.00**

ALPINE GLOW (Kleinsorge 1945) L. The large well formed flowers have a subdued rose tone that suggests the soft colors of mountain valleys at sundown. The colors are well blended and it is a bright iris that carries well in the garden. Well branched. H. M., A. I. S. 1946. 38 in. **\$1.50**

AMANDINE (G. Douglas 1946) M. L. The charm of this exquisite iris is in its delicacy of color and delightful ruffled form. It is a self with large flowers of pale cream lightly flushed with lemon. The standards are perfectly domed. The falls full and flaring. When you first see this iris you think what beautiful blooms, but they look so fragile. The surprising thing is that the flowers have exceptionally firm substance and remain in perfect condition for three days under hot sun. Well branched, vigorous growth. H. C., A. I. S. 1945. H. M., A. I. S. 1946. A. M., A. I. S. 1948. Winner of the President's Cup at Nashville 1948. 36 in. **\$5.00—3 for \$12.00**

AND THOU (Graves 1942) M. A self of palest Wedgwood blue (Ridgway) with a deeper blue flush in the center of the bloom. The large flowers are rounded in form, of heavy substance. Beard blue tipped white. Strong sturdy stalks with good branching. H. C., A. I. S. 1941. H. M., A. I. S. 1942. 40 in. **\$1.00—3 for \$2.25**

ANNA WILLIAMSON (Cook 1946) E. M. A blended pink bicolor with good carrying qualities in the garden. The contrast of light pink standards and deeper pink falls is very pleasing. H. M., A. I. S. 1946. 36 in. **\$2.00**

ARCADIA BUTTERCUP (Milliken 1948) M. Bright and glowing, this deep yellow stands out in the garden. A self with firm substanced flowers and well branched stalks. A great favorite on the Pacific Coast. 38 in. **\$3.50**

ARGUS PHEASANT (DeForest 1948) M. This rich smooth brown has won high praise in the last three years. A perfect self with wide standards and flaring falls. An important addition to the dark blended iris. H. M., A. I. S. 1948. A. M., A. I. S. 1950. 38 in. **\$15.00**

AUCOCISCO (Tobie 1949) M. An old Indian name pronounced Au-co-cis-co. Perfectly finished flowers with palest wistaria standards and very blue-purple falls. Almost a true amoena, the nearly white standards are highly domed and firm. The semi-flaring falls are rich and dark with the velvety finish completely covering the surface. A gem in form and color contrast. H. C., A. I. S. 1947. 34 in. **\$6.50**

AUTUMN TWILIGHT (Brown 1948) L. A fall blooming iris that is dependable in flowering even in New England. The closed standards are ecru in color, with no veining, and have a sparkling finish. The semi-drooping falls are lavender in the center, bordered with a brown edging. Blooms in August, September, and October. 32 in. **\$3.00—3 for \$7.50**

AZALEA (Nesmith 1946) M. This pink is tall and has good branching, which many of the newer pinks lack. The color is azalea pink with just a flush of ivory enveloping the whole flower. The standards are domed and firmly held, the falls semi-flaring. Pink beard. H. C., A. I. S. 1944. 38 in. **\$4.00**

AZURE SKIES (Pattison 1943) M. L. A self of pale lavender blue with firm domed standards and flaring almost horizontal falls. The ruffled flowers are beautifully formed with wide hafts. Wide and low branching. H. M., A. I. S. 1943. A. M., A. I. S. 1945. 34 in. **\$1.00—3 for \$2.50**

BANDED BEAUTY (H. Sass 1948) M. L. An iris that is well named for it is a beautiful and stunning plicata with a clear soft yellow under color pleasingly marked with rich red-brown, culminating in a band of this rich color on the edges of the falls. Excellent form, substance, and branching. 36 in. **\$5.00**

BARBARA ADAMS (Cahoon 1947) E. M. A deep blue-purple self with very flaring falls and strong well domed standards. Beard blue tipped white. Smooth satiny finished blooms on 5 way branching stalks. Mr. Randall of England was especially impressed with the beauty of this iris. 34 in. **\$2.50—3 for \$6.00**

BARBARA LUDDY (Lapham 1947). A clear pink with just a touch of ivory around the very broad tangerine beard. A self of full rounded form and firm substance that holds up under hot sun or rain. It has enough strength of color to have excellent garden value. A truly lovely pink. H. C., A. I. S. 1946. H. M., A. I. S. 1947. 38 in. **\$4.50—3 for \$10.00**

BAY STATE (Corey 1949) M. L. Most worthy of note is this light blue iris with large flowers of firm substance and delightful fragrance, often having three blooms open at one time on a tall well branched stalk. The flowers have a glistening finish that sparkles in the sunlight. It has performed well in the East as well as on the Pacific Coast. Five branches with ten flowers. H. C., A. I. S. 1946. H. M., A. I. S. 1949. 38 in. **\$10.00**

BEAU GAY (Nesmith 1949) M. The charm of this light salmon orange self is in its ruffled form, very firm substance and delicacy of color. A descendant of Leilani it has lost the heavy venation, but retained the lovely salmon orange color. An absolute self, even to the salmon beard, the flowers are medium in size with domed standards and semi-flaring falls. Deliciously fragrant and very floriferous. Lovely for border planting. 32 in. **\$5.50**

BILLET DOUX (G. Douglas 1946) E. M. This winsome little iris has a most intriguing form. Most aptly, it has been described as a "miniature Great Lakes with carriage correct, and poise erect." The standards are cupped and not touching, the falls very flaring and turned up at the border. A soft blue self, the many dainty flowers are evenly spaced on four to five way branching stalks. 22 in. **\$2.00—3 for \$5.00**

BIRD OF DAWNING (J. Sass 1945) M. A fascinating iris done in tones of pink with a luminous flush enveloping the whole flower. 34 in. **\$2.00**

BLACK BANNER (Nicholls 1947) L. Deep and velvety, this very dark iris is blue purple in color, and as with many of Col. Nicholls' iris, it is almost void of haft markings. Late flowering with sturdy growth, and good branching. H. M., A. I. S. 1947. 39 in. **\$1.50—3 for \$3.50**

BLACK FOREST (Schreiner 1945) M. A very deep richly colored iris of silky ebon blue-black. The blue beard and solid haft add to the depth of color. The well substanced flowers are medium in size and well proportioned to the stalk. H. M., A. I. S. 1946. A. M., A. I. S. 1948. 24 in. \$2.00

BLIZZARD (Knowlton 1949) E. A large white that is as pure in color as freshly fallen snow. The flowers are firm textured with well domed standards and arched flaring falls. The whole flower is frilled and ruffled, and the bright yellow beard is in sharp, but pleasing contrast to the purity of the bloom. Ten or more blooms, often with three flowers open at one time, and evenly spaced on the very tall well branched stalk. H. C., A. I. S. 1946. H. M., A. I. S. 1949. 40 in. \$7.00

BLUE ELEGANCE (Jory 1948) E. This beautiful Onco-hybrid of very large size is in two shades of blue. The full rounded standards are clear chicory blue with the large, semi-flaring falls of a deeper tone. The general effect is a medium steel blue with darker veining. H. M., A. I. S. 1949. 40 in. \$10.00

BLUE ENSIGN (Meyer 1938) M. Tall and commanding this handsome English iris is royal blue or dark medium blue in color with darker clean hafts and blue beard. The falls are flaring and lightly ruffled. The poise of the flowers on the tall well-balanced stalk is especially good. Large flowers, good substance, and vigorous growth. Awarded the Dykes Medal by The Iris Society of England 1949. 39 in. \$5.00

BLUE FRILLS (B. N. Stephenson 1946) M. An azure blue that is deeper in color than many of the blue iris of the present day. Roundly formed flowers of heavy substance and smooth glossy texture. 39 in. \$2.00

BLUE GLOW (Nicholls 1948) L. Lighter in color than Black Banner this iris has good carrying qualities in the garden. Almost a self, save for the lighter tone of violet in the standards. Smoothly finished flowers and well branched stalks. H. M., A. I. S. 1948. 38 in. \$2.50—3 for \$6.00

BLUE OX (Craig 1949) M. The recent advancement in creating tall well branched Onco-cyclus hybrids has been due in a great measure to the extensive hybridizing work carried on by Mr. Craig. This huge smooth lavender blue with leather-like substance is similar in color to the older blue iris El Capitan, and it does not show any trace of Onco-cyclus blood in its pattern. The strong sturdy growth and big bold flowers of remarkable substance suggest great possibilities in breeding new blue iris as it sets seeds easily. 30 in. \$6.00

BLUE RHYTHM (Whiting 1945) M. L. In color it is not far from Cornflower blue, softened by a silvery sheen. The flowers are large and full with broad standards, and wide semi-flaring falls. Good substance, free blooming habit, and tall widely branched stalks. H. M., A. I. S. 1945. A. M., A. I. S. 1947. A. M., R. H. S. 1950. Dykes Medal. 1950. 39 in. \$3.00

BLUE VALLEY (K. Smith 1947) M. L. Full, ruffled medium blue that gives a very blue effect in the garden. The standards are broad, domed, and fluted at the edges. The ruffled falls are very flaring with the color continuing in to the heart of the flower. Heavy substanced blooms well spaced on tall well branched stalks. H. C., A. I. S. 1945. H. M., A. I. S. 1947. A. M., A. I. S. 1949. 39 in. \$7.50

BOLD VENTURE (Nesmith 1948) L. SOLD OUT FOR 1951.
BRIGHT LIGHTS (Schreiner 1946) M. A novel plicata that has the carrying quality of a waxy rich yellow. On closer inspection it appears to be a bitone with bright yellow standards and white falls, bordered with a stitching of brown. 38 in. \$2.00—3 for \$4.50

BRONZE BROCADE (Nesmith 1948) M. L. The name is most descriptive of this lustrous warm blend of copper red, and tobacco brown. The standards are bronzy red, very broad and roundly domed with strong midrib. The semi-flaring and ruffled falls have a brown undercolor flushed Corinthian purple around the bronzy gold beard. There is a darker band of Kaiser brown bordering both standards and falls. Heavy substanced flowers. Strong vigorous growth with 10 or more blooms on 5 way branching stalk. H. M., A. I. S. 1948. 40 in. \$8.00

BROWN THRASHER (Kirkland 1940) M. Deep, yet glowing, this iris is almost a true brown, enlivened by the beard and brilliant central area. The flower has a lustrous sheen that makes it seem alive. H. M., A. I. S. 1940. A. M., A. I. S. 1943. 34 in. \$1.25—3 for \$3.00

BRYCE CANYON (Kleinsorge 1944) M. Named for one of the most colorful canyons of the west, its warm shades of henna and copper closely resemble the mellow yet glowing colors of the rock formation in that region. The flowers are large with highly domed standards and rather rounded falls. H. M., A. I. S. 1945. A. M., A. I. S. 1947. 36 in. \$2.50

BURGUNDY ROSE (D. Hall 1946) M. An iris that is well named for its dark amethyst color reminds one of the richness of old Burgundy wine. The large ruffled flowers are proudly carried on strong well branched stalks. Free blooming with vigorous growth. 35 in. \$2.50

BURMESE GOLD (Whiting 1945) M. Blended colors of deep yellow, pink, and gold, so smoothly combined that the whole effect is bittersweet pink. Especially nice in a clump for it has a long season of bloom, and its bright fresh flowers are long lasting. 36 in. \$2.00

CAHOKIA (Faught 1948) M. L. A beautiful light blue of very clear tone that deserves the warm reception it has received from iris enthusiasts in all parts of the country. A very lovely iris. The flowers are well formed, the branching good. H. M., A. I. S. 1949. 40 in. \$15.00

CARILLON (J. Wills 1945) M. L. A warm blend with the luscious coloring of ripe apricots. The cupped standards are broad and thick textured. The falls are arched and flaring with very heavy substance. Not tall, but very floriferous, the sparkling flowers of pink and honey yellow form a charming clump for border planting. H. C., A. I. S. 1943. H. M., A. I. S. 1945. 33 in. \$2.50—3 for \$6.00

CAROUSEL (G. Douglas 1948) M. This large, tall, flaring flower of heavy substance and smooth finish was given its name because it reminds one of the brilliant, dazzling colors of a carnival. The medley of magenta, violet, and gold is so skillfully combined that the color effect is bright lavender-rose. The heavy orange beard accentuates the boldness of pattern. Strong stalks, and great freedom of bloom. H. M., A. I. S. 1948. 44 in. \$4.50—3 for \$10.50

CASA MORENA (De Forest 1943) M. One of the largest flowered iris that I have seen. A self with long full blooms of Chestnut brown which in sunlight glisten with reddish tones. An entirely new color in the garden. H. M., A. I. S. 1944. A. M., A. I. S. 1946. 36 in. \$2.00

CASCADE SPLENDOR (Kleinsorge 1945) L. Most attractive in color and form, this large flowered blend of pink, apricot, and tan, has won high praise from iris judges. The very large well substanced flowers are broad and full with decided ruffling on both standards and falls. H. M., A. I. S. 1945. A. M., A. I. S. 1947. 36 in. \$2.50—3 for \$6.00

CENTURION (Wills 1950) E. M. This rich burnished brown iris makes a most impressive clump in the garden. The standards are domed and closely held, the falls are rounded and semi-flaring with a very faint suggestion of blue just below the gold beard. A self with big round globe shaped flowers of firm substance and excellent carrying qualities. A handsome sturdy iris with good branching and clean growth. H. C., A. I. S. 1949. H. M., A. I. S. 1950. 38 in. \$15.00

CHAMOIS (Kleinsorge 1944) M. Pure chamois in color, this very large flowered variety has a soft satiny finish that sparkles as if dusted with frost crystals. The flowers are beautifully formed with standards and falls waved at the edges. A self with no venations. H. M., A. I. S. 1945. A. M., A. I. S. 1948. 36 in. \$3.50—3 for \$8.50

CHANTILLY (D. Hall 1945) This is a distinct novelty with lovely ruffled flowers of lavender flushed with gold at the haft. The edges of both standards and falls are so heavily crimped that they give the appearance of being edged with lace. Dainty and charming with well branched stalks. H. M., A. I. S. 1945. A. M., A. I. S. 1947. 36 in. \$2.00—3 for \$4.50

CHERIE (D. Hall 1947) M. Large ruffled flamingo pink self of good form with brilliant tangerine beard. Gives a very pink effect in the garden. H. M., A. I. S. 1947. A. M., A. I. S. 1949. 34 in. \$15.00

CHIVALRY (J. Wills 1944) M. An impressive flower that is deeper in color than Great Lakes, larger in size, and with exceptionally heavy substance. The domed standards are large and full. The flaring falls are broad hafted, firm and strong. The inconspicuous beard is orange changing to blue at the tip. Both standards and falls are ruffled at the edge. The placement of the blooms on the well branched stalk is excellent, and the growth is vigorous. H. M., A. I. S. 1944. A. M., A. I. S. 1946. A. M., R. H. S. 1950, Dykes Medal 1947. 36 in. \$5.00

CHOIR BOY (Schreiner 1947) L. The flowers have milk white standards that soon pale to clear white. The falls are deep blue without the usual purple tinge. Medium height with fair branching. 34 in. \$1.50

CLOTH OF GOLD (Whiting 1945) M. Brilliant color and profusion of bloom are the outstanding features of this bright but deep yellow self. Neat trim flowers of heavy substance that make a most effective clump in the garden. H. M., A. I. S. 1947. A. M., A. I. S. 1950. 36 in. \$1.50

CLOUD CASTLE (Graves 1944) M. An exquisite and effective pale wistaria blue. The standards are broad and roundly domed with a distinct fluting at the edge. The ruffled falls are wide and flaring. There is an indefinable charm about this iris that always attracts the attention of garden visitors. H. M., A. I. S. 1944. A. M., A. I. S. 1949. 37 in. \$3.00—3 for \$7.00

COLOMA (Essig 1946) E. M. A luminous pale yellow with cupped and firmly held standards slightly deeper than the flaring falls. There is a white area around the heavy orange beard and a distinct edging of the same color as the standards. Strong, sturdy stalks with wide branching. 44 in. \$1.50

COLONIAL DAME (G. Douglas 1950) M. Cool and refreshing, this charming light blue has an airy grace that will appeal to all iris lovers. The full, ruffled standards are firmly held, the flaring falls are crisp and firm with delightful ruffling at the edges. Floriferous with well branched stalks and vigorous growth. Plant near Syllabub for lovely combination of color. H. C., A. I. S. 1949. 36 in. \$7.00

COLOR SERGEANT (H. F. Hall 1948) M. L. The broad and perfectly domed standards are a blending of malaga and antique ruby (Maerz & Paul). The flaring falls are antique ruby with deeper velvety flush, bordered by ruffled edges of lighter malaga. Beard deep brownish yellow. Handsome and outstanding in the ranks of rich deep reds, the large flowers have strong firm substance. 8 to 10 blooms on 4 way branching very sturdy stalk. Vigorous foliage and rapid increase. H. C., A. I. S. 1947. 40 in. \$6.50—3 for \$15.00

COPPER BEECH (Nesmith 1950) L. Few iris have the rich glowing tones and glistening finish of this henna and copper blend. The falls have an under color of copper rose with a Brazil red overflush on the semi-flaring falls. The roundly domed standards are a blending of these two colors set off by the old gold beard. The whole effect is a rich sparkling copper. Eight to ten flowers on well branched stalk. 38 in. \$7.00

CORPORAL MARY (Graves 1949) M. This iris was named for Mr. Edward Watkins' daughter who was in the WACS and served in the South Pacific, and was chosen by him as being an iris of special merit. A sister seedling of "Lady Louise" it is larger flowered and lighter in color, and has that indefinable something known as quality that we find in so many of the iris from Dr. Graves. Large firm flowers with pale lemon cream standards roundly domed, and broad flaring falls of white with a delicate tracery of cream at the edges. Full yellow beard. The firm textured blooms are well spaced on tall widely branched stalks. H. C., A. I. S. 1948. H. M., A. I. S. 1949. 42 in. \$10.00

COURTIER (D. Hall 1947) M. The deepest pink of the Hall Flamingo pinks. Not quite as good form as Cherie, but the color is outstanding. Very prominent deep tangerine beard. Strong stalks. H. C., A. I. S. 1944. 30 in. \$3.50

COVER GIRL (G. Douglas 1949) L. The dominant color is bright pure pink with a blending of deep buff and yellow on the upper part of the wide hafted falls. The standards and falls are trimly ruffled and the whole flower has a brightness and sheen that is very attractive. Late blooming, with firm subtanced flowers and good branching. 30 in. \$4.50—3 for \$10.00

DANUBE WAVE (Schreiner 1947) M. This medium blue comes from a crossing of Anitra and Narain, and combines the good qualities of the parents. A rich shade of marine blue that gives a very blue effect. Firm subtanced blooms. well branched stalk. H. M., A. I. S. 1948. 38 in. \$4.00

DESERT SONG (Fay 1946) M. Large, cool, crisp blooms of cream that are beautifully formed with very broad standards and rounded flaring falls. The firm textured flowers have no haft markings, and are evenly spaced on tall well branched stalks. A very fine iris. H. M., A. I. S. 1946. A. M., A. I. S. 1949. 38 in. \$5.00

DISTANCE (P. Cook 1946) M. A very smoothly finished light blue with no coarse veining, and very few haft markings. The whole flower has a misty silvery sheen that adds to its beauty. A flaring flower with firm substance and excellent form. H. M., A. I. S. 1946. A. M., A. I. S. 1949. 36 in. \$5.00

DOWN EAST (Tobie 1943) M. A self of anthracene purple with the falls seeming darker on account of their extreme velvety surface. The domed standards are broad and full. The falls are semi-flaring of very velvety finish. A deep but brilliant iris of good substance, sturdy stalks, and good branching. H. M., A. I. S. 1943. 37 in. \$1.50—3 for \$3.75

DREAMCASTLE (Cook 1943) M. This rather deep orchid pink self has great carrying qualities in the garden. Both the standards and falls are very broad at the hafts and the almost white beard is in sharp contrast to the brightness of the flower. H. M., A. I. S. 1944. A. M., A. I. S. 1948. 38 in. \$3.50

DRUM MAJOR (G. Douglas 1947) M. L. The falls of Ox-blood red (Ridgway) are large and flaring, bordered with a lighter red that is the same color as the standards. The standards are very broad and roundly domed, with firm substance and clear color. The brighter red styles give an inner glow in pleasing contrast to the clean darker hafts and brown gold beard. Most red iris are liable to some bleaching in hot sun, but this one holds its color, form, and substance under most trying weather conditions. 38 in. \$5.00—3 for \$12.00

DUTCH BOY (G. Douglas 1949) V. E. Here we have a very early blue-white that is thoroughly hardy and a dependable bloomer, a feature that is lacking in most of the early whites. We have tested Dutch Boy for five years, both in the North and the South, and it has always bloomed profusely. The flowers are blue-white changing to cool white under hot sun, but always remaining crisp and firm. Tall, it has almost perfect branching (four branches and terminal), and the full yellow beard is an added attraction. A worthy iris to commence the pageant of tall bearded iris. 38 in. \$5.00

EASTER CANDLE (Essig 1946) M. This large flowered iris is well named for it is a tall and stately white with a heavy gilding of rich yellow in the throat, so glowing that it seems as if it were a brilliant lighted candle. The highly domed standards are pure white, the falls are semi-flaring of white with yellow lightly brushed down on the hafts. Tall well branched stalks. 48 in. \$2.00

EASTER GOLD (Essig 1946) M. L. A smoothly finished flower of medium yellow with firm substandard flaring flowers. Well branched stalks. H. M., A. I. S. 1946. 40 in. \$2.00

ESQUIRE (Lothrop 1945) M. L. Tall and commanding, this deep blue purple iris is as dark as Brunhilde (one of its parents) but with better form and taller. The flowers are crisp and firm with a smooth sheen over all that adds to its beauty. Large blooms on 4 way branching stalk. H. M., A. I. S. 1947. 45 in. \$3.50—3 for \$9.00

ETOILE D'OR (G. Douglas 1943) M. Pure deep yellow self with firm texture and sparkling finish. The standards are domed and firmly held. The falls are semi-flaring with an overlay of deeper yellow that gives a velvety lustre to the bloom. H. M., A. I. S. 1943. 38 in. \$2.00—3 for \$5.00

EXQUISITE (Nesmith 1947) M. It is a self of light Congo pink (Ridgway), the color intensified by the pink beard and deeper styles and crests. The standards are domed, and firmly held by the strong midrib. The falls are semi-flaring, and the absence of reticulations brings out the smooth wax-like finish of the flowers, while the very pink buds give added charm to the whole effect. Three way branching stalks. H. C., A. I. S. 1944. 35 in. \$5.00

EXTRAVAGANZA (G. Douglas 1944) V. L. A handsome amoena with the standards white shading to cream at the base. The falls are a blending of copper, red, and deep violet with a velvety finish. A trim tailored flower of heavy substance. Vigorous growth. H. M., A. I. S. 1944. A. M., A. I. S. 1947. A. M., R. H. S. 1950. 40 in. \$3.50—3 for \$8.50

FALL VELVET (G. P. BROWN 1950) V. L. A late fall blooming iris. The standards are light purple flushed brown at the haft. The falls are velvety purple with a flush of brown at the edges. The flowers are long lasting, and the stalks sturdy. 18 in. \$5.00

FANTASY (D. Hall 1947) M. Charming and unusual, this orchid lavender has a most pleasing combination of color. The standards are orchid lavender, well domed and closely held. The semi-flaring falls are slightly deeper in color with a heavy golden yellow wash on the upper part, extending well into the throat. The tangerine beard gives a luminous quality to the flower. H. C., A. I. S. 1944. H. M., A. I. S. 1947. A. M., A. I. S. 1949. 30 in. \$10.00

FAR HILLS (J. Wills 1949) M. Cool and refreshing is this large orchid pink self. Deeper in color than Dreamcastle, it is larger and has no haft venations to mar the smooth firm finish. The flowers have broad domed standards and full, slightly ruffled falls. The many flowers are well spaced on sturdy stalks with good branching thus giving a long season of bloom. 38 in. \$5.00—3 for \$12.50

FRANCELIA (McKee 1944) M. A very bright chrome yellow, yet there is a depth of color that gives it a rich mellow tone. The standards are roundly domed and firm. The semi-flaring falls are broad and full, enlivened by the orange beard. Heavy substandard flowers on well branched stalks. H. C., A. I. S. 1942. H. M., A. I. S. 1944. 38 in. \$2.00

FRANCONIA (Graves 1942) M. Cool and classic as white marble the large flowers have exceptionally smooth firm texture and are carried on strong stalks that have ideally spaced branches. The standards are well domed with strong midrib. The falls arched and flaring and in perfect proportion to the standards. H. C., A. I. S. 1941. H. M., A. I. S. 1942. 40 in. \$2.50—3 for \$6.00

FRANK DRAKE (Grant 1947) M. L. A cool reverse bicolor with standards of Reed yellow (Ridgway) completely domed and very firmly held. The very flaring falls are pure white with a generous overlay of Chartreuse gold surrounding the beard of the same color. Well branched and vigorous growth. 39 in. \$2.00—3 for \$5.00

FRANK PUGLIESE (Lapham 1947) M. This iris might be described as a more red and glowing Christabel, and even more of a self. The standards are so deep that they seem the same shade as the lustrous falls. The whole flower is very free from venations and most colorful in the garden. Free flowering, well branched. 38 in. \$3.50

GAYLORD (G. Douglas 1949) V. L. SOLD OUT FOR 1951

GENERAL PATTON (Kleinsorge 1947) M. L. The introducer of this iris considers it one of the best from Dr. Kleinsorge. Brimming with color, this copper brown self has a metallic undertone that brings out the rich tones of the flower. H. M., A. I. S. 1947. 39 in. \$6.00

GLAD TIDINGS (Whiting 1947) M. L. A novelty among the light chrome yellows. The flowers are very large, widely flared, ruffled and of heavy waxy substance. On account of its low branching with the lower blooms opening first, it is ideal for flower arrangement. 34 in. \$3.00

GOLD BEATER (Kleinsorge 1944) M. Solidly colored chrome yellow self. It is a very bright deep yellow without marking of any other color. The buds are especially attractive on account of their intense coloring. The large flowers are well spaced on excellent branching stalks. H. M., A. I. S. 1945. 36 in. \$1.50

GOLDEN MORN (Essig 1946) E. M. A warm yellow with flaring form somewhat after the style of Easter Morn but of larger size and more firm texture. Its beauty is enhanced by the infusion of deeper glistening gold throughout. A striking flower with a most refreshing fragrance. Wide branching, sturdy growth. 45 in. \$2.00—3 for \$5.00

GOLDEN RUFFLES (Taylor 1946) E. M. A clear yellow of medium tone with very ruffled flowers of good substance and pleasing form. Well branched stalks and vigorous growth. H. M., A. I. S. 1946. A. M., A. I. S. 1949. 38 in. \$3.00

GOLDEN RULE (H. F. Hall 1950) M. L. Distinctive among the new orange and yellow iris this rather late flowering variety merits the attention of all iris enthusiasts that are looking for a near perfect yellow. The standards are broad and very firmly domed. The falls are flaring, broad and increasing in rounded form at the tips. Beard and styles same color as the rest of the flower. A deep aureolin self (R.H.C.) with a remarkably smooth finish, devoid of any venations and with a velvety flush on the falls. Well branched. 40 in. \$10.00

GOLDEN RUSSET (D. Hall 1946) M. The name is descriptive of the color, and it is one of the largest flowers in existence. Tall with vigorous growth, it is spectacular in the garden. H. C., A. I. S. 1945. 40 in. \$3.50

GOLDEN SYMPHONY (Horton 1944) L. An unusual combination of color that is most intriguing. The standards are brilliant yellow; the falls heliotrope bordered with the yellow of the standards. Late flowering, with good branching. H. M., A. I. S. 1950. 39 in. \$7.00

GOOD NEWS (Kleinsorge 1946) M. This is a sister seedling of Chamois and Bryce Canyon, and while not quite as tall, its brilliant color and floriferousness more than make up for this. A rich mustard gold self with wide domed and ruffled standards. The flaring falls have a banding of copper on the edges. H. M., A. I. S. 1947. 33 in. \$2.50

GREEN PASTURES (Heller 1947) L. Pale chartreuse yellow flowers of large size and most unusual color. The touch of blue at the tip of the beard is most effective and accentuates the cool green tones of the bloom. Tall and free flowering, it is especially nice for flower arrangement. H. C., A. I. S. 1945. H. M., A. I. S. 1947. 42 in. \$3.50

GREIG LAPHAM (Gage 1948) M. A smoothly finished medium yellow self with a wonderful mellowness of color. The domed standards and semi-flaring falls are trimly formed with absolutely no venations to mar the firm velvety substance of the flowers. Rich orange beard with soft yellow tips. Free flowering, and increases rapidly. H. C., A. I. S. 1946. H. M., A. I. S. 1948. 36 in. \$4.00—3 for \$9.50

GULF STREAM (Fay 1946) M. A deep blue iris that has won high acclaim from iris enthusiasts in many parts of the country. It is an absolute self with no haft markings, even the beard is blue. While all dark blue iris have some purple in their pigment, this one is much more blue than any very dark iris that I have seen. H. C., A. I. S. 1945. H. M., A. I. S. 1946. 37 in. \$3.00

HARVEST BLUE (G. P. Brown 1950) V. L. The best fall blooming iris that I have seen. A descendant of the famous iris, Missouri, it has inherited the blue coloring and the same flaring form. The closed standards and styles are medium lavender blue, broad and full. The deeper blue falls flare widely and have a touch of brown at the haft, beard yellow. A reliable fall bloomer and especially nice quality flower. Eight flowers, three branches and terminal. 20 in. \$5.00

HEART'S DESIRE (J. Wills 1950) M. Brilliant rose-red in color with wide branching and strong sturdy growth. This iris has an exceptionally smooth finish, heavy substance and long season of bloom. The domed and overlapping standards are rose-red. The lightly ruffled semi-flaring falls a deeper velvety red with a touch of copper brown at the haft. Free flowering, it increases rapidly. 38 in. \$7.00

HEIGHO (Craig 1949) M. L. The immense globe like flowers have very heavy substance and both standards and falls are unusually broad and full. A clear Bradley's violet self with a hint of a signal patch at the tip of the dull orange gold beard. A very vigorous and prolific *Oncocyclus* hybrid with a remarkably long season of bloom. Ideally branched, tall stalks. H. M., A. I. S. 1949. 45 in. \$20.00

HELEN COLLINGWOOD (K. Smith 1949) M. L. A very brilliant iris in the neglecta class. The standards are light lavender, broad and firmly held. The bright violet-purple falls are flaring with wide hafts. The heavy subtended flowers have a neat ruffling at the border. The tall sturdy stalks are well branched and the growth is vigorous. A distinctive iris of great charm and beauty. H. M., A. I. S. 1950. 40 in. \$20.00

HELEN MCGREGOR (Graves 1946) M. L. Seldom has an iris been greeted with such enthusiastic praise as Helen McGregor. The color is clear blue, lighter than Great Lakes and with not a trace of lavender in it. The flowers are large of rounded form with very broad hafts and beautiful ruffling on the border of both standards and falls. There is a silvery white flush surrounding the almost white beard that enhances the beauty of the blooms. The flowers have exceptionally heavy substance and the very sturdy stalks are adequately branched to display the blooms. The refinement of form and beauty of color are ideal and quite different from any other iris. H. C., A. I. S. 1943. H. M., A. I. S. 1946. A. M., A. I. S. 1948. Dykes Medal in 1949. 36 in. \$5.00

HELEN MCKENZIE (Graves 1950) M. Clarity of color and perfection of form are the outstanding features of this pure white iris; it is really white with no haft markings or touch of any other color in its makeup. For comparison it was planted by the side of Priscilla that has been considered the whitest iris in existence, and truly Helen McKenzie was whiter. The standards are perfectly domed and firmly held. The falls, flaring and broad, the firm, smooth texture of the blooms, and the perfect placement on the well branched stalks place this iris at the top in the white iris class. Ever since its first blooming it has been greatly admired by experienced iris judges. H. C., A. I. S. 1947. H. M., A. I. S. 1950. 37 in. \$22.50

HERITAGE (D. Hall 1949) M. A flamingo pink of deeper color than Hit Parade or Cherie and of heavier substance. The full slightly ruffled flowers are smoothly finished and the bright tangerine beard is in most pleasing contrast to the pink tones of the standards and falls. H. C., A. I. S. 1947. H. M., A. I. S. 1949. 32 in. \$15.00

HIT PARADE (D. Hall 1947) M. Mr. Hall has so many pinks that it is hard to choose the best. The color of this one is between Courtier and Floradora, and the flowers are larger. Tangerine beard. 30 in. \$4.00

HURRICANE (Craig 1949) M. Immense broad flaring flowers of toughest texture. Almost a self of pale powder blue, suffused in an exotic manner with touches of a darker blue. The color pattern is fascinating. This beautifully formed, very floriferous iris is rated by many A. I. S. Judges as the best *Oncocyclus* hybrid from Mr. Craig. H. M., A. I. S. 1949. 38 in. \$15.00

ILLINOIS (D. Hall 1949) M. A beautiful creamy yellow self of fine texture and great purity of color. The standards are crimped, the falls flaring. The large flowers have firm substance and are evenly spaced on extra well branched stalks. Floriferous and vigorous growth. H. C., A. I. S. 1946. H. M., A. I. S. 1950. 36 in. \$6.00

INDIAN RED (H. F. Hall 1949) M. Colorful and with great garden value, this tawny tan and bright Pompeian red always attracts the attention of garden visitors. The very broad and full standards are a blending of pecan brown and Pompeian red giving a coppery rose effect. The large extremely flaring falls are bright Pompeian red bordered with a decided ruffle of light pecan brown. Rich gold beard. Few iris have the brilliance of this boldly flaring red iris. The flowers have heavy substance, and the stalks are very sturdy and well branched. 36 in. \$7.00

JANE PHILLIPS (Graves 1950) M. This beautiful blue is a child of the famous iris Helen McGregor that won the Dykes Medal in 1949. Deeper in color, but with similar form and substance, it possesses great color appeal. A very clear blue self with well domed standards, arched and smoothly finished, the semi-flaring falls are lightly fluted at the edges. Firm textured and of exquisite color, it possesses that mark of distinction that is a characteristic of so many iris bred by Dr. Graves and his able assistant, Edward Watkins. This iris has been tested in many parts of this country as well as in England and is in high favor wherever grown. H. C., A. I. S. 1947. H. M., A. I. S. 1950. 38 in. \$20.00

JASMINE (Grant 1944) M. A very smooth golden yellow self with no brown or orange tones. The flowers are clear in color with a velvety sheen on the falls. Firm textured flowers, well branched stalks. H. M., A. I. S. 1944. 40 in. \$2.00—3 for \$5.00

JASPER AGATE (Mrs. T. Williams 1943) M. Distinctive in the combination of color this medley of gold, copper-red and rose is difficult to describe but it is lovely. It has great individuality and charm. H. M., A. I. S. 1944. 34 in. \$1.50

JAVA SKY (Wareham 1942) M. An iris with a brilliant blending of colors. The highly domed standards are Etruscan red strongly suffused with golden copper along the firm midrib. The falls are the same color with a gleaming overlay of Hortense violet in the center and around the edge a narrow border of copper gold. 39 in. \$2.50

JULIET (Kleinsorge 1946) M. This iris has been described as one of the most colorful and fiery blends of the present day. The large flowers have a basic color of flame copper suffused with shades of salmon, and its center area and beard are of the brightest burnt orange. Increases rapidly. H. M., A. I. S. 1947. 36 in. \$2.00

JUNIOR MISS (Graves 1949) M. There is a growing demand for border iris, and Junior Miss is especially adapted to foreground planting. Few of this type of iris have the charm and refinement of this creamy yellow self. Firm substanced slightly ruffled flowers with no venations to detract from the smooth almost satiny finish. Very free flowering. Delightful planted in front of taller blues and purples. 24 in. \$2.50

KATHERINE FAY (Fay 1945) M. This is considered one of the best whites and has won high praise especially in the middle west. The standards are ruffled and tightly closed. The falls are semi-flaring with enough ruffling to take away any tailored appearance. H. C., A. I. S. 1944. H. M., A. I. S. 1945. A. M., A. I. S. 1947. 35 in. \$2.00—3 for \$5.00

KATIE BELLE (G. Douglas 1947) M. L. A large lustrous blend. Similar in color to Brown Thrasher but much more brilliant. A most floriferous iris with ruffled firm substanced flowers on sturdy well branched stalks. 38 in. \$1.50

KEARSARGE (Graves 1946) M. L. Large flowers with the coloring shading more to lavender and not as light in tone as Helen McGregor. The domed standards are broad, the falls arched and flaring with firm texture. The blooms are beautifully poised on widely branched stalks. 42 in. \$2.00

KEENE VALLEY (K. Smith 1949) M. This large flowered iris has been described as a more refined edition of Blue Valley. It is deeper in color with the large blooms of ruffled flaring form evenly spaced on sturdy well branched stalks. H. M., A. I. S. 1950. 40 in. \$20.00

LADY BOSCAWEN (Graves 1946) M. Frilled and ruffled, this very pure white seems to be even more lovely than the previous whites from Dr. Graves. A very large clear white self with broad fluted standards and extremely flaring falls delightfully ruffled. The substance is strong and firm and the flowers are well spaced on tall graceful stalks. An iris that always impresses one with its purity of color and beauty of form. H. C., A. I. S. 1943. H. M., A. I. S. 1946. A. M., A. I. S. 1948. 42 in. \$5.00

LADY LOUISE (Graves 1947) M. L. Distinctive in both color and pattern, the large, broad ruffled standards of Colonial buff (Ridgway) are roundly domed and firmly held by the very strong midrib. The falls are iridescent white with a clear fluted border of Colonial buff, widening each side of the orange beard, and blending in to the slightly deeper buff of the styles. The fascinating buds are an added attraction with their olive yellow coloring contrasting strongly with the Lime green midrib, and showing plainly the ruffling of the flowers even in the folded buds. Firm substanced flowers, four way branching stalks. H. M., A. I. S. 1947. 44 in. \$8.00

LADY MOHR (Salbach 1944) E. M. A distinctive iris that has charm and grace to a marked degree. It is entirely different in color from any iris with oncoocyclus blood. The flowers are large and of rounded form with standards of oyster shell white, cupped and firmly held. The falls are chartreuse yellow with a lovely large red-violet blotch which radiates out into the fall and adds to the beauty of the flower. Good branching and firm substance. H. M., A. I. S. 1944. A. M., A. I. S. 1947. 40 in. \$1.50—3 for \$3.75

LAKE BREEZE (Fay 1945) M. Large ruffled light blue with just a suspicion of pink on the center of the standards and falls. A descendant of Gloriole it has the same glistening finish, good substance and branching. H. C., A. I. S. 1944. H. M., A. I. S. 1945. 37 in. \$1.50—3 for \$3.75

LAKE GEORGE (K. Smith 1945) M. L. A self of blue violet (Ridgway) shading darker at the hafts. The standards are roundly domed. The falls are very flaring with no color other than blue showing on the hafts. The garden effect is a smoothly finished blue with trim flaring form. H. C., A. I. S. 1944. H. M., A. I. S. 1945. 38 in. \$2.00—3 for \$5.00

LAKE SHANNON (De Forest 1945) M. Clear medium blue with broad petaled flowers and superbly branched stalk that allows three flowers to be open at one time without any crowding. H. M., A. I. S. 1946. 36 in. \$3.00—3 for \$7.50

LELA DIXON (G. Douglas 1949) E. We need blue plicatas that have a clear color pattern, good branching, and sturdy stalks that will not blow down at the slightest provocation, and this iris meets these requirements. A seedling of Blue Shimmer, it has lost the flexible stalk, but kept the color. In fact, the blue is more clear, and the white more pure. The well shaped flowers are of rather rounded form and have smooth firm texture. The stalks have excellent branching. It is hardy and a good grower. It blooms about the same time as Dutch Boy, thus adding another to this class of early tall bearded iris. 36 in. \$8.00

LIGHTS ON (Lapham 1946) M. Mr. Lapham has produced many fine red iris, but this one is considered the best of his that has been introduced. The clean cut flowers are of uniform color with no veining to detract from the smooth finish. Medium in height, but very pure red in color. H. M., A. I. S. 1946. 33 in. \$5.00

LOTHARIO (Schreiner 1942) M. L. A rich blue bicolor with the same general color pattern as Amigo, but with larger flowers and much taller stalks. A popular iris. H. M., A. I. S. 1945. 38 in. \$1.50—3 for \$3.75

LOUISE BLAKE (K. Smith 1943) M. A delightful iris with chicory blue standards and velvety falls of deep violet bordered by a rim of pale blue. The sharp contrast between standards and falls is most effective. H. C., A. I. S. 1942. H. M., A. I. S. 1944. A. M., A. I. S. 1947. 30 in. \$1.50—3 for \$3.25

LYNN LANGFORD (D. Hall 1946) M. The color of this iris is most distinctive with its orchid pink tones, enlivened by the golden throat and beard. The flower is large, of good form, and the color is most pleasing. A lovely iris of charm and refinement. H. C., A. I. S. 1945. H. M., A. I. S. 1946. A. M., A. I. S. 1950. 36 in. \$3.50

MARY ELLEN (McKee 1947) L. The Ox-blood red flowers (Maerz and Paul) are very large and have great depth of color, yet there is a brilliance about them that is seldom found in a red iris. The closely domed standards are firmly held by the heavy Green gold midrib. The falls are wide, velvety, flaring, and finished with a ruffled marginal edging of Rosy red that is exactly the same shade as the standards. H. C., A. I. S. 1946. H. M., A. I. S. 1947. 40 in. \$3.50

MARY VERNON (McKee 1942) M. A blended variegata with gold standards lightly flushed with red. The falls are rich Chianti ruby with a narrow border of gold. Excellent form and good branching. H. C., A. I. S. 1941. H. M., A. I. S. 1942. A. M., A. I. S. 1945. 37 in. \$1.50

MASKED BALL (Buss 1949) M. A most unusual and attractive plicata that has received high praise in the midwest. At a distance it gives the impression of a reverse amoena. The closely domed standards are heavily flushed and veined with deep rich purple while the semi-flaring falls of pure white are bordered with the same purple as the standards. Good substanced flowers, strong well branched stalks. 32 in. \$12.50

MASTER CHARLES (Williamson 1943) M. A most impressive iris of rich glowing mulberry color. The flowers have a wonderful finish and the branching is exceptionally good. H. M., A. I. S. 1944. A. M., A. I. S. 1946. 38 in. \$1.50

MATTIE GATES (Sass Bros. 1946) M. L. Similar in color pattern to the iris Golden Fleece, but much brighter and deeper in tone. The standards are lemon chrome; the falls have a white center broadly bordered with the same clear yellow. A delightful iris with firm wax-like substance. H. M., A. I. S. 1946. A. M., A. I. S. 1950. 38 in. \$10.00

MELODY LANE (D. Hall 1949) E. Soft golden apricot flowers of large size and long form. The heavy and brilliant tangerine beard is in sharp contrast to the mellow peach tones of the bloom. A new color break in the Hall iris. H. M., A. I. S. 1950. 36 in. **\$10.00**

MIMOSA GOLD (Douglas 1947) M. L. Anyone that has seen mimosa or acacia in full bloom can visualize the bright sparkling effect of this brilliant yellow. The flowers are clean cut and smoothly finished, with firm domed standards and flaring falls. This iris sets a standard for late blooming yellows, not only for its firmly textured flowers, but for the spacing of the five way branching stalks with the lower ones being re-branched. 38 in. **\$4.50—3 for \$10.50**

MINNIE COLQUITT (H. Sass 1942) M. Very gay and spectacular is this brilliant plicata. Both standards and falls are white bordered by wine purple. The flowers are large and firm, the stalk is widely branched. H. M., A. I. S. 1943. A. M., A. I. S. 1945. 40 in. **\$1.50**

MIOBELLE (McKee 1945) L. A subdued but warm rose blend with a slight undercast of golden copper in the center of the flower. A profuse bloomer of rapid increase and has proven to be a valuable parent. Tall, vigorous and hardy. H. C., A. I. S. 1943. H. M., A. I. S. 1945. 40 in. **\$1.50**

MIOGEM (McKee 1947) M. A most unusual blend of wine, Fuchsia red, and blue intermingled with brownish tones, giving a bright iridescent effect that is very fascinating. The standards are a blending of Fuchsia red and China rose (Maerz and Paul) with a greenish midrib holding them firmly closed. The flaring falls are a deeper shade of Fuchsia and China rose, with a blue blaze at the base of the orange beard, and a ribbon ruffle of brown edging the falls. H. C., A. I. S. 1945. H. M., A. I. S. 1947. 36 in. **\$3.00**

MOONTIDE (McKee 1946) M. A large well rounded flower of rich cadmium yellow that is entirely different from his Francelia both in color and form. The standards are broad and roundly domed, the wide flaring falls are thick textured and decidedly velvety in finish. Beard orange. H. C., A. I. S. 1945. H. M., A. I. S. 1946. 40 in. **\$5.00**

MORNING BLUE (Jory 1948) E. Massive blue Onco-hybrid that will afford competition for Blue Valley. It is tall and well branched carrying the form of Lady Mohr, but larger. The color is a clear lavender blue with the typical Onco veining in a slightly deeper shade of blue. Good substance, sturdy in growth. 40 in. **\$10.00**

MOUNT HERMON (Lowry 1945) M. There are many white iris, but this cool thick textured iris ranks with the best. The flowers are exceptionally well balanced with closed cupped standards, and a distinct silver edging. The broad falls are semi-flaring with no markings around the pale lemon yellow beard. A lovely iris with a delicious fragrance. H. C., A. I. S. 1944. H. M., A. I. S. 1945. 42 in. **\$2.00**

MT. MCKINLEY (Schreiner 1947) E. M. An early flowering variety coming from Amigo and Wabash with blooms slightly larger than those of Wabash, and with better branching. 38 in. **\$2.00—3 for \$4.50**

NANCY HARDISON (G. Douglas 1945) M. L. So many pinks have an orchid tone but this iris is definitely a peach pink with the softest blending of pale yellow concentrating in the beard and heart of the flower. The flowers have firm substance, evenly spaced on four branching stalks. H. C., A. I. S. 1943. 36 in. **\$2.50—3 for \$6.00**

NEW SNOW (Fay 1946) M. This iris is well named for it is just as pure in color as newly fallen snow. The flowers are large and ruffled, with no venations. Just the full bright yellow beard that emphasizes the purity of the bloom. Tall, well branched stalks. H. C., A. I. S. 1945. H. M., A. I. S. 1946. A. M., A. I. S. 1948. 40 in. **\$5.00—3 for \$12.00**

OLYMPIAN (G. Douglas 1948) M. Imposing and quite different, this handsome iris is most resplendent in the garden. It is a bi-tone with perfectly domed standards of buff lightly blended with rose. The flaring and very broad falls are rosy brown with a deeper velvety flush of rose in the center. The flowers are very large of heavy thick substance, and have great weather resistance. 42 in. **\$5.00**

ON GUARD (C. Carpenter 1949) M. L. Large full flowers of warm yellow softened to a lighter tone in the center of the falls and a slight infusion of old gold at the haft around the full yellow beard. The firm standards are cupped and closed, the broad falls are semi-flaring and lightly ruffled at the edge. The whole flower has a delightful picoted border that adds to its individuality and charm. A good grower, it has been tested in many parts of the country. H. C., A. I. S. 1948. H. M., A. I. S. 1949. 40 in. **\$8.00**

ORANGE GEM (McKee 1948) M. This rich orange yellow has been the center of attention in the McKee garden for several years. A full rounded flower with well held standards and flaring falls that are wide at the haft. The whole flower has a slight ruffling and the color is enriched by the full orange beard. Vigorous growth. H. C., A. I. S. 1947. H. M., A. I. S. 1948. 40 in. **\$10.00**

ORANGEMAN (Waters 1946) M. A large orange self with a flush of deeper orange at the haft. The flowers have a smooth firm finish and the stalks are exceptionally well branched. This iris has great carrying quality in the garden. H. M., A. I. S. 1947. 40 in. **\$3.00**

PAGAN PRINCESS (G. Douglas 1948) M. The first deep pink with a tangerine beard. The full well formed flowers of rosy pink are in striking but pleasing contrast to the full tangerine beard. An iris of great individuality and a new color effect in the garden. H. M., A. I. S. 1948. 38 in. **\$4.00—3 for \$9.00**

PATH OF GOLD (E. L. Hodson 1943) E. A delightful yellow dwarf iris that is well named for it literally makes a Path of Gold. The plants are very floriferous and hardy, a gem for bordering a path. 9 in. **\$1.00**

PEG DABAGH (Craig 1948) E. This Onco-cyclis hybrid has been highly praised by California Judges. A clear violet blue self of large size and heavy substance. Tall well branched stalks, vigorous growth and increases rapidly. 45 in. **\$9.00**

PENN CHARTER (H. F. Hall 1948) L. Yellow iris with flaring form are rare, but here is one, a brilliant yellow self of flaring form with glistening finish, and substance of velum. The standards of aureolin yellow are broad, strong, and firmly domed. The almost horizontal falls are slightly ruffled at the tips, of the same color as the standards. Beard and styles same tone. Clarity of color and great garden value characterize this clean cut iris. 40 in. **\$6.00—3 for \$15.00**

PENSIVE (Grant 1947) M. Few very dark iris have depth of color, excellent form and substance, but in Pensive we find all three. It is a self velvety blackish purple, with uniformity of color throughout. One of the most pleasing dark iris of recent years, and has been praised by many iris lovers. Heavy subtanced flowers. 38 in. **\$2.50—3 for \$6.00**

PIERRE MENARD (Faught 1948) M. A clear medium blue of fine form and heavy substance. The stalk is strong with equally spaced short branches that allow three flowers to be displayed at one time with no crowding. An excellent iris. H. C., A. I. S. 1946. H. M., A. I. S. 1948. A. M., A. I. S. 1950. 36 in. **\$15.00**

PINK LACE (J. Sass 1947) M. Lightly ruffled flowers of rosolane pink, flushed at the heart of the bloom by the distinct tangerine beard. The medium sized flowers are smoothly finished, and add a charming bit of color to the garden. Well branched stalk. 36 in. **\$3.00**

PINNACLE (Stevens 1949) M. Heralded as a new break in color combination, this iris has clear white standards and smooth very light yellow falls. It might be described as a white and yellow amoena that is distinctly different from any other iris. It was the center of attention in the Schreiner garden at the time of the 1949 annual meeting. H. M., A. I. S. 1949. 38 in. \$12.00

PLUM TART (C. Connell 1949) M. Christened by Mr. Robert E. Allen and most aptly so for the color is like a delectable plum tart with a dash of white meringue in the center. Many will remember this unique and fascinating iris that was blooming in the Douglas garden as well as here in 1948. A dark Perilla purple self except for the center of the falls which is white and on the upper part, this white seems painted on the surface in brush strokes rather than blended into the purple. 34 in. \$5.00

POLONADE (Grant 1949) M. L. Exquisitely finished and of almost perfect form, this lovely yellow and white reverse bicolor was greatly admired in the Douglas garden and in our own. The standards are rich medium yellow and are firmly and roundly domed. The falls are semi-flaring of smooth even white, and over the whole flower is the chamois like lustre of magnolia blossoms, a quite different arrangement of color that is most effective. Tall with ideal branching. H. C., A. I. S. 1948. 39 in. \$10.00

POLLY THRALL (M. J. Barker 1950) M. Not many iris have the beauty and charm of this delightful yellow and white reverse bicolor. The closely held standards are pale lemon yellow with the inside pure white. The white falls are trim and flaring with the underside light lemon yellow, pale lemon beard. Fragrant and delectable in color with the flowers in perfect proportion to the well branched stalk. It is ideal for border or rock garden. H. C., A. I. S. 1949. 32 in. \$7.00

PREMIER PEACH (D. Hall 1946) M. A further advancement in the flamingo pinks from Mr. Hall. A self of clear peach pink with well domed standards and semi-flaring falls. There are no haft markings, and the delicious coloring is most captivating. Good substance and branching. H. C., A. I. S. 1944. H. M., A. I. S. 1946. 34 in. \$3.50

QUECHEE (Knowlton 1950) M. Seldom do we see an iris that is as distinctive in form and color as this handsome red. A garnet red self with broad and cupped standards, the falls, flaring and rounded, and thick short bronze beard. Particularly noticeable is the richness of color of the finely formed, smoothly finished and firm textured flowers. The flowers do not burn or fade under hot sun, and remain in fine condition due to their very heavy substance. Good branching and growth. H. C., A. I. S. 1948. H. M., A. I. S. 1950. 37 in. \$10.00

RADIATION (D. Hall 1948) M. Beautiful in color and form; in my estimation this is the finest iris that Mr. Hall has produced. It is a self with large firm subtanced flowers of glistening orchid pink with perfectly domed standards and flaring falls set off by the deep tangerine beard. The stalk is well branched and sturdy. H. C., A. I. S. 1947. H. M., A. I. S. 1948. A. M., A. I. S. 1950. 32 in. \$10.00

RAINBOW ROOM (J. Sass 1946) M. A remarkable blend, so named because it seems to contain all the colors of the rainbow. The standards are antimony yellow. The falls are bordered with the same yellow, merging into lilac toward the center with a metallic blotch at the end of the bright yellow beard. Good substance and branching. H. C., A. I. S. 1945. H. M., A. I. S. 1947. 36 in. \$10.00

RANGER (Kleinsorge 1943) L. Large long flower of almost true crimson that is very brilliant in the garden. It is a self with strong firm texture in both standards and falls. Very floriferous with strong stalks and fine branching. H. M., A. I. S. 1944. A. M., A. I. S. 1946. 36 in. \$1.50

RED MAJESTY (G. Douglas 1946) L. The color is deep Eugenia rose (Ridgway), a self except for the yellow infusion at the center of the flower. The blooms are large of rather rounded form with standards flushed yellow at the base of the strong midrib, the falls semi-flaring, overlaid with the same rich yellow around the thick yellow beard. The perfect placement of the flowers on the five way branching stalk allows four flowers to be open at one time with no crowding. H. C., A. I. S. 1945. H. M., A. I. S. 1948. 42 in. \$3.50—3 for \$9.00

RED TORCH (H. P. Sass 1947) M. A very brilliant and richly colored variegata of outstanding beauty. The standards are glowing bronze gold with falls of the purest red, smooth velvety finish with no markings to detract from the purity of color. H. M., A. I. S. 1947. 35 in. \$3.00—3 for \$7.00

RELENTLESS (P. Cook 1948) M. L. Rich and colorful, this deep red self lives up to the high standard set by this prominent hybridizer. The firm textured flowers are a smooth even red with no venations at the haft. A very handsome iris. H. M., A. I. S. 1950. 32 in. \$7.00

RICH RAIMENT (Craig 1949) M. This fine formed flaring flower comes from a long line of breeding with plicatas. A rich and deeply colored plicata with an all over "fancy" pattern. The garden effect is a rich red brown that is quite different from any other plicata. H. M., A. I. S. 1950. 36 in. \$10.00

RILLA GABBERT (C. Carpenter 1946) M. Rarely will you see an iris that is so rich in jewel-like freshness and beauty as this rose and gold blend. It is half way between Daybreak and Prairie Sunset in garden effect and does not fade or lose its substance under most trying weather conditions. Wide low branching. H. M., A. I. S. 1946. 39 in. \$4.00—3 for \$9.50

ROCKET (Whiting 1945) E. M. One of the most discussed iris of recent years. The standards are pure deep chrome, and the falls are orange chrome, shaded a bit lighter at the edge. The flowers are large, broad petaled and of firm substance. Strong well branched stalks. H. M., A. I. S. 1945. A. M., A. I. S. 1947. 38 in. \$5.00—3 for \$12.00

ROSE SPLENDOR (Kleinsorge 1947) M. L. Coppery rose in color, this iris gives a deep pink effect in the garden. A self except for the deeper venations and bronzy flush on the hafts. Rich orange beard. Strong and sturdy stalks with good branching. H. M., A. I. S. 1948. 40 in. \$4.00

RUSSET WINGS (J. Wills 1946) M. A heavy subtanced flaring flower of smoothly blended gold, copper and apricot giving the effect of a glowing russet self. The standards are beautifully formed and firmly held, the falls are very flaring, delightfully ruffled at the edges. Bright in color, the flowers glow and sparkle even on cloudy days. H. C., A. I. S. 1945. H. M., A. I. S. 1946. 38 in. \$4.50

SALMONETTE (J. Sass 1946) One of a series of newer pinks from the Sass Bros. garden. A light ochraceous salmon (Ridgway) self with a soft creamy flush around the tangerine beard that blends into the ground color of the flower. H. C., A. I. S. 1945. H. M., A. I. S. 1947. 36 in. \$3.50

SALAMONIE (P. Cook 1946) M. A delicate pink blend that in the sunlight sparkles like a beautiful jewel. The well subtanced flowers are of pleasing shape and the branching excellent. H. M., A. I. S. 1946. 38 in. \$5.00

SAN ANTONE (Kleinsorge 1947) M. L. Imposing in size and form, this deep ruddy brown iris seems even more brown than most iris from this hybridizer. A deep tan or sand-brown self. The flowers are well spaced on tall well branched stalks. H. M., A. I. S. 1948. 40 in. \$4.00

SARAH GOODLOE (G. Douglas 1949) M. L. Rarely do we see an iris that has such rich elegance as this tall and stately one. This is due to the solid almost black-maroon color and the very velvety finish of the flowers. An iris that was highly praised at the Nashville meeting. A long flower with arched and highly domed standards of deep maroon. The falls are semi-flaring of the same color as the standards, but with a deep velvet flush that extends into the heart of the bloom. Most reds do not stand strong sun or rain, but this does remaining crisp and fresh throughout the day. The stalk is tall, strong and well branched. A very finished iris with excellent carrying quality in the garden. H. C., A. I. S. 1948. H. M., A. I. S. 1949. 38 in. \$10.00

SEAFARER (Buttrick 1949) M. L. The name suggests the clear blue water of the sea and is most appropriate. All that have seen this iris praise it highly and are impressed not only by the clarity of blue color, but by the perfection of form and sturdy growth. It is a true self, smooth and free from self veining that so often mars the beauty of an iris. The color is clean and pure and more blue than any of the newer blue iris of similar color depth. The standards are firmly domed with no tendency to open at any time. The falls are flaring and in excellent proportion so that the flowers structurally present a most pleasing appearance. Smooth firm substanced flowers, fine low branching. H. C., A. I. S. 1948. H. M., A. I. S. 1949. 36 in. \$15.00

SILVER SUNLIGHT (G. Douglas 1949) V. L. SOLD OUT FOR 1951.

SKY RANGER (D. Hall 1948) M. Tall and stately, this medium blue iris is well named for it does seem to range the sky. The flowers are large and heavily ruffled with the three way branching stalk so well proportioned that three blooms open at one time are not crowded. The tall stalks are strong and sturdy. H. M., A. I. S. 1949. 54 in. \$7.50

SNOW CARNIVAL (Graves 1942) M. A very large pure white with the ruffled finish of wind blown snow drifts. The fluted standards are domed and firmly held together. The very flaring falls are ruffled at the edge. Although the flowers are large they withstood a 48-hour wind without being whipped and battered. H. C., A. I. S. 1941. H. M., A. I. S. 1942. A. M., A. I. S. 1944. 39 in. \$1.25

SNOW CRYSTAL (J. Wills 1947) M. The most lovely flower that I have ever seen on a white and blue plicata. Large in size with perfectly domed standards, and widely flaring falls, its great distinction lies in the striking contrast of the intense blue styles and crests with the pure whiteness of the standards and falls. Heavy textured flowers. H. C., A. I. S. 1945. H. M., A. I. S. 1947. 35 in. \$2.50—3 for \$6.00

SOLID MAHOGANY (J. Sass 1944) M. Deep reddish brown iris. According to Ridgway, the standards are Victoria lake, the falls are velvety burnt lake. The color effect is brownish mahogany, the substance heavy, branching very good. H. C., A. I. S. 1943. H. M., A. I. S. 1944. A. M., A. I. S. 1947. 38 in. \$2.00—3 for \$5.00

SONRISA (DeForest 1942) M. A coppery pink and creamy yellow blend with smooth metallic finish. H. M., A. I. S. 1945. 38 in. \$1.50

SPANISH PEAKS (Loomis 1947) M. L. A flower of clear white from the hybridizer that originated the Dykes Medal Winner Elmohr. The blooms are very large and have great purity of color; even the beard is white. Tall with good branching. H. M., A. I. S. 1948. A. M., A. I. S. 1950. 38 in. \$7.50

SPINDRIFT (Loomis 1944) M. L. A self of pale pink with some venations on the falls, the crowning glory of the flower is the tangerine beard which lights up the whole flower in most brilliant contrast. The stalks are firm and the placement of the blooms is good. H. C., A. I. S. 1943. H. M., A. I. S. 1945. 36 in. \$1.50

SPRING SUNSHINE (Milliken 1948) M. This light luminous yellow has the largest flowers of any variety in our garden. A well formed self with domed standards, well held by the firm midrib. The falls are very broad and semi-flaring. Tall with good branching it makes a spectacular clump in the garden. Vigorous growth. H. M., A. I. S. 1947. 48 in. \$2.50

STAR SHINE (J. Wills 1949) M. L. Deep cream, white, and pearly blue are so skillfully combined that the flower has the iridescent gleam of lustrous pearls. An iris of great individuality, it was a center of attraction in the Wills garden at the time of the Nashville meeting. The deep cream or buff-yellow standards are broad and domed, the white flaring falls have a suggestion of blue in the center, and an edging of the same color as the standards. Very firm substanced flowers and exceptionally sturdy well branched stalks. An iris that never succumbs to the elements. It has great distinction both in quality of flower and arrangement of color. H. C., A. I. S. 1948. H. M., A. I. S. 1949. 36 in. \$10.00

ST. REGIS (W. Caldwell 1947) M. An iris that might be termed an "aristocrat" in the very light blue class for it is quite different in form, carriage, and substance from any other in this group. The standards are roundly domed with crisp ruffling. The falls are very flaring with firm fluted borders. Charming and delicate in color, the flowers have balance and beauty to a marked degree. H. C., A. I. S. 1944. H. M., A. I. S. 1948. 38 in. \$4.00

SUKEY OF SALEM (Nesmith 1946) L. Named for a famous ship that sailed from New England, this iris is as strong and sturdy as that old time bark. A blended self of Ocher-red and rose with a Kaiser brown flush on the upper part of the falls (Ridgway). Not a dull iris for it is brimming with bright blended colors so cleverly intermingled that it is difficult to describe. The flowers are very broad and full, of flaring form and extremely heavy substance. Growth vigorous. H. C., A. I. S. 1945. H. M., A. I. S. 1946. 38 in. \$2.50—3 for \$6.00

SULTAN'S ROBE (Salbach 1945) M. This iris is a great favorite on the Pacific coast. The standards are between Vandyke red and deep old rose. The broad heavy substanced flaring falls are of the same color except there is a bright dash of blue violet in the center of the falls. H. M., A. I. S. 1946. 36 in. \$2.00

SUMMERTIME (W. Caldwell 1949) M. L. Rich, deep yellow of very flaring rounded form and almost perfect branching. Many will remember this iris in the Caldwell garden in 1946 when it bloomed for the first time. It has proven thoroughly dependable and most outstanding in the deep yellow class. The standards are Capucine yellow (Ridgway), broad and perfectly domed. The very flaring falls are just a shade lighter with a slight creamy flush around the thick yellow beard. Firm heavy substanced flowers and strong sturdy stalks. This iris is in the front ranks of the darker yellows. H. C., A. I. S. 1946. H. M., A. I. S. 1949. 40 in. \$7.00

SUNSET BLAZE (Kleinsorge 1948) E. M. An impressive and brilliant iris of blazing golden flame, flushed with burnished gold. Large full flowers and good branching. Winner of the President's Cup at the National A. I. S. Meeting in 1949. H. M., A. I. S. 1949. 39 in. \$7.50

SUZETTE (Knowlton 1945) M. This cream plicata is lovely as a specimen stalk and also has great garden value. The flowers are lightly dotted with maroon at the edges near the hafts and the rosy madder-brown styles contrast pleasantly with the delicate color of the bloom. Its form, substance and branching are nearly perfect. H. C., A. I. S. 1944. H. M., A. I. S. 1945. 40 in. \$3.00—3 for \$7.00

SYLVIA MURRAY (Norton 1944) A very fine blue from Great Lakes and Shining Waters. The flowers are clear and pure in color with precise styling, frosty firm texture, and heavy substance. Luxuriant growth, and tall well branched stalks. H. M., A. I. S. 1946. A. M., A. I. S. 1949. 40 in. \$1.35

SYLLABUB (G. Douglas 1950) M. L. Many will remember this charming rosy pink iris that was blooming in the Douglas garden at the time of the Annual Meeting in 1948. Following is the description of Syllabub by a very prominent hybridizer and A. I. S. judge: "A vision of real loveliness in soft flesh pink,—an absolute self, without a sign of reticulation and with a heavy and truly pink beard. It does not fade in the hot sun, not one bit; it has closed standards, absolutely, and falls that flare beautifully. It is of good size, and it has substance. The stalk is marvelous with four or five branches—long branches—starting close to the ground. I counted eleven buds on the main stalk of bloom." The above is a perfect description of this lovely pink iris. Plant with Colonial Dame for beautiful garden effect. H. C., A. I. S. 1948. H. M., A. I. S. 1950. 28 in. \$7.00

SYRINGA (Lowry 1947) M. A clean, pure lilac self with closed cupped standards, and broad semi-flaring falls. The substance is firm, and the strong stalks are very graceful and especially well branched. The fragrance, and subtle coloring give this iris great individuality and charm. Thoroughly hardy, and a prolific bloomer. H. C., A. I. S. 1946. H. M., A. I. S. 1947. 40 in. \$3.50

TALLY HO (D. Hall 1949) M. Deeper in color than any of the flamingo pink strain from Mr. Hall, it is one of the most valuable parents for increase in size and variation in color. The upper part of the falls is close to the bright color we find in fuchsia toned orchids. The standards and lower part of the falls are of a lighter shade. Large flowers, heavy substance, and medium branching. H. M., A. I. S. 1950. 32 in. \$10.00

THE FRANCISCAN (Essig 1947) M. A dark purple self, flushed with iridescent tones of maroon purple around the bronzy gold beard. The standards are very domed and firm, and appear slightly lighter than the falls, due to the finish of the extremely flaring falls. The stalks are sturdy with three to four well spaced branches. 36 in. \$4.00

THREE CHEERS (Cook 1945) M. Bold flaring flowers with pallid violet standards and flaring falls of dark violet. A seedling of Wabash with great height and vigorous growth. H. M., A. I. S. 1946. 42 in. \$2.50

TIP TOP (D. Hall 1947) M. Striking and quite different this plicata gives the effect of a reverse bicolor. The standards are solid violet blue, well domed. The falls are white save for a very light peppering of blue in the throat and edges. Crisp flowers, and good branching. 30 in. \$2.50

TOBACCO ROAD (Kleinsorge 1942) M. L. A very distinctive iris of rich tobacco brown. The flower is compact and firm with heavy substance and trim flaring form. An iris that has exceptionally rich glowing tones. H. M., A. I. S. 1944. A. M., A. I. S. 1946. 34 in. \$2.50

TOURNAMENT (J. Wills 1948) L. This large luminous iris is one of the best in the rose-purple class, really more rose than purple. Its color carries to a great distance in the garden. The rounded flowers have broad full standards and wide semi-flaring falls, enriched with a velvety brown overlay on the hafts. Good substance flowers, strong sturdy stalks. A great addition in prolonging the season of bloom. H. M., A. I. S. 1948. 42 in. \$4.00—3 for \$9.00

TWILIGHT SKY (Fay 1948) Mr. Fay considers this the best pink iris he has introduced. The medium sized flowers are well tailored with clean hafts and flaring form. The red beard is in sharp contrast to the clear pink of the flower. The widely spaced flowers are carried on strong well branched stalks. H. M., A. I. S. 1950. 35 in. \$7.50

VIGIL (J. Wills 1947) E. M. L. This iris has a very long season of bloom, commencing with the early bloomers, extending through mid-season and finishing with the late flowering varieties. A very pure white with large blooms of smooth firm texture, the clean hafts are devoid of any markings. An iris that will appeal to iris lovers, not only for its purity of color, but for its form and lasting qualities. The branching is wide, the stalks strong, a dependable bloomer. H. C., A. I. S. 1946. H. M., A. I. S. 1947. 38 in. \$3.00—3 for \$7.50

VISION FUGITIVE (Wareham 1942) M. L. A large cool white and yellow with an intangible quality of grace throughout. The domed standards are cream yellow. The details of the falls are most intriguing; the broad white surface is faintly shadowed light blue with a tracery of yellow at the rim. The substance of the flowers is firm, stalks very well branched. H. M., A. I. S. 1945. 39 in. \$3.00

WHITE PARCHMENT (H. F. Hall 1949) M. L. This iris is well named for it has the strong substance and impervious quality of heavy parchment. Many white iris are early flowering, but this very large clear white blooms later, thus extending the season of white iris in the garden. The standards are firm and closed, the falls arched and flaring with just a faint flush of yellow around the very pale yellow beard. Tall and sturdy, often with three or more flowers open at one time on the widely branched stalk. 40 in. \$6.00

WHITE RUSSIA (Tobie 1947). M. This handsome white carries its blooms on about as ideally spaced and proportioned stalk as can be desired, often with three flowers open at one time, in perfect placement, and giving a cascade effect up and down the sturdy stalk. The rounded flowers are a warm white with a golden flush surrounding the rich yellow beard. Sweetly scented, and of vigorous growth. H. C., A. I. S. 1946. 40 in. \$3.00

WHITE WEDGEWOOD (Grant 1943) E. M. When the flower first opens it is a very light blue white that soon changes to pure white save for a slight blue flush at the haft. The flowers have very strong substance with closed standards, and semi-horizontal falls. H. M., A. I. S. 1943. A. M., A. I. S. 1945. 38 in. \$1.50—3 for \$3.75

WHISTLING SWAN (Waters 1948) M. A slightly ruffled large white that has firm texture and a sparkling finish. Tall, well branched and a thrifty grower. 40 in. \$3.50

WINSTON CHURCHILL (W. R. Stevens 1946) M. L. Glowing and alive with color, this striking red from New Zealand won high praise from those that saw it in the garden last year. The standards are copper-red in pleasing contrast to the dark crimson falls. 32 in. \$5.00

ZANTHA (Fay 1947) E. M. Clear and clean, this deep yellow self is most outstanding in the garden. Large beautifully formed flowers with strong, broadly domed standards, and semi-flaring velvety falls. Heavy substance flowers on tall especially well branched stalks. Winner of the Presidents cup at the 1947 National Meeting of the A. I. S. H. C., A. I. S. 1946. H. M., A. I. S. 1947. 38 in. \$6.00

Collections

ONLY ONE OF A VARIETY

ALL PRICES ARE NET

BEARDED IRIS

AWARD OF MERIT COLLECTION

10 Iris for \$22.00

All of these iris have received A.M. from the A.I.S.

Select 3	Select 4	Select 3
BLUE VALLEY	CASCADE SPLENDOR	CHANTILLY
AMANDINE	CHAMOIS	BLACK FOREST
LADY BOSCAWEN	CLOUD CASTLE	TOBACCO ROAD
ROCKET	EXTRAVAGANZA	LADY MOHR
CHIVALRY	BLUE RHYTHM	LOUISE BLAKE
HELEN MCGREGOR	SOLID MAHOGANY	PRISCILLA
NEW SNOW	KATHERINE FAY	WHITE WEDGEWOOD

Special List of Well Known Bearded Iris

The Following Varieties are \$1.00 each—3 of 1 variety \$2.50

- ACTION FRONT (P. Cook 1942). Brilliant coppery red. Broad full flowers. 36 in.
 BLUE CROWN (Washington 1945). Ruffled pale blue and white. 36 in.
 BLUE SLEEMER (J. Sass 1942). Large blue and white plicata. HM'42. AM'47. 39 in.
 COPPER GLOW (G. Douglas 1942). Rich copper and gold blend. HM'45. 37 in.
 DAYBREAK (Kleinsorge 1941). Golden pink and copper blend. HM'42. AM'43. 40 in.
 DESERT MOON (Washington 1945). Late blooming tall creamy yellow. 42 in.
 DIVIDEND (G. Douglas 1941). Late flowering rich deep carome, heavy substance. 40 in.
 ELMOHR (Loomis 1942). Large round flowers of rich mahogany. Dykes Medal 1945. 34 in.
 GOLDEN EAGLE (D. Hall 1942). Huge brilliant yellow with satiny finish. HM'42. 36 in.
 GOLDEN EPAULETS (Grant 1946). Handsome white and gold iris, heavy substance. 38 in.
 GOLDEN FLEECE (J. Sass 1940). Lemon cream and white, ruffled form. HM'40. AM'42. 44 in.
 GYPSY (Kleinsorge 1944). Coppery gold S. F. chestnut brown. Tall and late. HM'45. 48 in.
 GYPSY BARON (Schreiner 1942). Very dark mulberry and white plicata. 40 in.
 HOOSIER SUNRISE (Lapham 1942). Attractive blend of mauve pink and yellow. HM'43. 40 in.
 INNOVATION (D. Hall 1945). Rose pink plicata, gives very pink effect. HM'47. 38 in.
 KATHARINE LARMON (Graves 1942). Blend of honey yellow and copper. Fine parent. 38 in.
 KENTUCKY BEAUTY (Carpenter 1943). Bright rose flowers, heavy substance and fine form. 38 in.
 LORD DONGAN (K. Smith 1940). Chinese violet and Corinthian purple. A stunning flower. 37 in.
 MIRABELLE (Whiting 1941). Luscious pink and apricot blend. HM'41. 38 in.
 MULBERRY ROSE (Schreiner 1941). Very large bright rose-purple. HM'43. AM'44. 40 in.
 NORTHMAN (G. Douglas 1943). Wide petaled heavy substanced pure white. Late flowering. 40 in.
 OLA KALA (J. Sass 1943). Brilliant ruffled orange yellow. HM'43. AM'45. Dykes Medal. 1948. 38 in.
 PALE PRIMROSE (Whiting 1946). Cool primrose yellow, heavy substanced flowers. HM'50. 38 in.
 PINK REFLECTION (P. Cook 1942). Chamois pink blend, HM'42. AM'44. 36 in.
 PRAIRIE SUNSET (H. P. Sass 1939). All the blended colors of a sunset. HM'37. AM'41. Dykes Medal. 1943. 34 in.
 PRISCILLA (Whiting 1942). Lovely pure white of ruffled form. HM'43. AM'47. 26 in.
 RED AMBER (Loomis 1942). Handsome rose-red with large flowers. HM'43. 40 in.
 SABLE (P. Cook 1938). Black purple with lustrous sheen. HM'37. AM'40. 36 in.
 SEQUATCHIE (Caldwell 1944). Lovely coppery rose-red infused with violet. HM'44. 41 in.
 SERENATA (Milliken 1943). An attractive smoothly finished pink blend. 40 in.
 SHARKSKIN (G. Douglas 1942). One of the best white iris, heavy substanced. HM'43. AM'46. 44 in.
 SHISHALDIN (DeForest 1944). A blend of orange, yellow, and golden brown. Tall sturdy stalks. 40 in.
 SILVER LUSTRE (C. Carpenter 1948). Lovely wistaria-blue self, heavy substanced flowers. 40 in.
 SNOW DROP (G. Douglas 1942). Late blooming very pure white of great charm. 26 in.
 SNOW FLURRY (Rees 1939). Spectacular blue white with ruffled flowers. HM'39. AM'41. 40 in.
 SOUSUN (Essig 1945). Beautiful pale cream, smoothly finished. HM'45. 40 in.
 STORM KING (Nicholls 1940). Distinctive black-purple self. HM'41. 38 in.
 TISHOMINGO (Caldwell 1942). Huge wistaria-blue self, heavy substanced, fine branching. HM'42. AM'44. 42 in.
 THREE SISTERS (DeForest 1941). Cream standards and red falls. A near amoena. 35 in.
 TRIPTYCH (Wareham 1939). Heavy substanced chrome-yellow flowers. HM'38. 39 in.

The Following Varieties are 75c each—3 of 1 variety \$1.75

- BERKELEY GOLD (Salbach 1942). Deep clear yellow. HM'44. AM'46. 38 in.
 CATHEDRAL DOME (Nesmith 1936). Large ruffled white. HM'36. 39 in.
 CHINA MAID (Milliken 1936). Blended lilac pink. HM'38. AM'39. 40 in.
 COPPER ROSE (P. Cook 1941). Rose and copper blend. HM'42. AM'43. 38 in.
 GARDEN MAGIC (Grinter 1936). Brilliant red, fine form HM'37. 38 in.
 GRAND CANYON (Kleinsorge 1941). Plum, copper and gold blend. HM'43. AM'44. 40 in.
 GREAT LAKES (Cousins 1938). Beautiful blue. Dykes Medal Winner in 1942. 40 in.
 JONQUIL (Whiting 1943). Large yellow with darker border. 38 in.
 LOVE AFFAIR. (Mitchell 1946). Rosy pink plicata. 34 in.
 NIGHTFALL (D. Hall 1942). Velvety pansy purple. HM'43. AM'45. 36 in.
 PINK RUFFLES (K. Smith 1940). Lovely ruffled pink. HM'40. AM'42. 26 in.
 THE ADMIRAL (D. Hall 1941). Fine medium blue. HM'40. AM'44. 37 in.
 VIOLET SYMPHONY (K. Smith 1940). Large violet self. HM'40. AM'43. 40 in.
 WORTHINGTON (P. Cook 1943). Bright rosy red bicolor. 36 in.

The Following Varieties are 50c Each—3 of 1 variety \$1.25

- AMIGO. Lovely amoena. 30 in.
 ANNE NEWHARD. Satiny blue bicolor. 38 in.
 BIRCHBARK. Very pure white. 34 in.
 BLUE DELIGHT. Lovely blue. 39 in.
 BUTTERCUP LANE. Brilliant yellow. 31 in.
 CLOVELLY. White with green flush. 40 in.
 COMRADE. Rose blend. 38 in.
 CORTEZ. Yellow and red variegata. 36 in.
 DEEP VELVET. Rich red violet. 38 in.
 DOXA. Chamois yellow. 18 in.
 EDNA HICKS. Velvety purple. 38 in.
 ELEGANS. Creamy yellow, lovely. 38 in.
 ELSA SASS. Lemon and white. 36 in.
 FLORA CAMPBELL. Peach blend. 38 in.
 FLORA ZENOR. Pink, tangerine beard. 40 in.
 FORTUNE. Rich golden brown. 34 in.
 FULL SAIL. Lovely white. 38 in.
 GIN FIZZ. Frosty white. 38 in.
 GOLD MEDAL. Early bright yellow. 36 in.
 GOLDEN SPANGLE. Beautiful yellow. 40 in.
 GUDRUN. Big white. 34 in.
 INDIANA SUNSET. Pink and yellow blend. 39 in.
 LADY NAOMI. Pale lavender plicata. 38 in.
 MAJENICA. Lovely pink blend. 36 in.
 MEDITERRANEE. Large French blue. 38 in.
 MELANIE. Tall orchid pink. 42 in.
 MELITZA. Flesh pink, tangerine beard. 40 in.
 NARAIN. Deep blue. 35 in.
 NED LEFEVRE. Rose blend. 38 in.
 NEOS. Pink blend. 22 in.
 NOBILITY. Large white. 42 in.
 OCCIDENTAL. Cream and rose plicata. 39 in.
 PERSAN. Fine French red. 35 in.
 PICOTEE. Lovely blue and white plicata. 38 in.
 PERSIAN PRINCE. Brilliant variegata. 36 in.
 REVEILLE. Pale pink, tangerine beard. 38 in.
 RUTH POLLOCK. Rose plicata. 36 in.
 SANDIA. Clear pink. 36 in.
 SNOW MAIDEN. Floriferous white. 20 in.
 SPARKLING BLUE. Lovely blue. 39 in.
 STARDOM. Pink blend. 34 in.
 SUNSHINE. Brilliant pellow. 36 in.
 THELMA JEAN. Clear Claret red. 36 in.
 TIFFANJA. Yellow plicata. 40 in.
 TREASURE TROVE. Coppery blend. 20 in.
 WABASH. Beautiful amoena. 39 in.
 WHITE GODDESS. Tall large white. 38 in.
 YUMA. Yellow and red plicata. 40 in.

Apogan Irises

Louisiana Iris and Hybrids



Photo by CALDWELL

Winner of the Mary Swords Debaillon Award for 1950

This group includes new and rare Louisiana irises, and hybrids. These bloom after the bearded irises and are a great addition to any garden. They are especially recommended for pool edge and half shady places in the garden. All of these have been tested for hardiness in New England.

ABBEVILLE REDS These are collected plants, and are in varying shades of red. I am fascinated by their unique form and great beauty. The styles are roundly curved and resemble a quill with the stamen peeping out from the center. Most of the flowers have recurving petals and sepals that show the "quilled" styles to great advantage. The blooms are handsome. Tall with good branching. 36 in. \$3.00

BIG DOVE (G. Douglas 1950) M. L. Huge recurving flowers of palest pastel lavender (R.H.C.) with a smooth wax-like finish. Broad sepals and petals with almost no signal line. Tall strong stalks with good branching. The dove gray flowers have a silvery luster that is both different and pleasing. Hardy and vigorous growth. 38 in. \$4.00

CADDO (Trichel 1950) M. L. Distinctly different both in beauty and perfection of form, this vibrant red-bronze has won high acclaim from all that have seen this handsome Louisiana hybrid. It is a controlled cross coming from a (white *Giganticaeurlea* x *Red Fulva*) *Liliana* x *Bayou Vermilion*. The flowers are rounded and very flaring with a large rich gold, almost circular signal patch on the heavy substantanced petals. The stalk is strong and sturdy allowing four flowers to be open at one time with no bunching or crowding. Thus it is an ideal variety not only for exhibition but also for beauty in garden planting. Hardy and of rapid increase. H. M., A. I. S. 1950. Mary Swords Debaillon Award. 1950. Illustrated above. 36 in. \$10.00

CAJAN JOYEUSE (Thomas Geo. 1943) The large flowers open deep brilliant rose, gradually lightening to bright rose pink. It blooms very freely over a period of several weeks. One of the brightest. 30 in. \$3.00

CARDINALIS (McMillan 1943) Very firm flowers of brilliant cardinal-scarlet opening out almost flat with long narrow yellow crests. The flowers are large and are borne on gracefully curving stems. One of the most floriferous of this class of iris. 36 in. An Abbeville Red. **\$3.00**

CAROLINE DORMON (R. Dormon 1943) An uncontrolled hybrid from seeds grown by Mrs. Ruth Dormon. The heart of both sepals and petals is pale yellow, shading out to soft Rose red at the edges and tips. A delightful iris that is arresting in its beauty. 38 in. **\$5.00**

CATHEDRAL BLUE (Dormon C. 1945). These flowers combine the beautiful blue tones found in old cathedral windows. Velvety finished six inch blooms with bright yellow crests on the petals. 20 in. **\$3.00**

ELIZABETH WASHINGTON (Washington 1931) Velvety bright blue; small yellow signal; slightly cupped flower of good size. H. M., A. I. S. 1933. 30 in. **\$3.00**

EMMA SAMPLE (Trichel 1951). See Introductions.

FAIRY CHALICE (Dormon R. 1944) A charming bicolor with cream petals, and amaranth sepals. The six inch flowers are of lovely chalice form. 38 in. **\$6.00**

GIANT YELLOW ABBEVILLE IRIS. See Introductions.

HAILE SELASSIE II (Trichel 1951). See Introductions.

LILLIAN BOULDIN (Trichel 1951). See Introductions.

MARTHA WASHINGTON (Washington 1931) The color is a rich velvety old rose, deepened by a slight brownish tone, the whole effect being a glorious deep red. H. M., A. I. S. 1930. **\$3.00**

MARY LOVE (Washington 1931) Pinkish lavender flowers of orchid shade; wonderful color and form. 24 in. **\$3.00**

PEARL RIVER WHITE VIRGINICA. See Introductions.

RUTH DORMON (Trichel 1950) M. This iris is considered by many Louisiana iris experts as the best pink beardless iris that has been produced. A controlled cross coming from (white *Giganticaerulea* x Red Fulva) Lilyana x *Giganticaerulea* alba. Mrs. Trichel describes it as "the pink of a young baby's palm". It is a flower of soft flesh pink close to true pink in color effect with no signal patch. The tall straight stalks rise well above the foliage. A self of great beauty and charm. H. M., A. I. S. 1950. 36 in. **\$5.00**

SIBYL SAMPLE (Trichel 1950) M. L. Wide spreading five inch flowers of almost mahogany red that soon after opening change to a bright soft rose, but retain all their brilliance and substance, thus making a two-toned effect on one stalk that is unique and very attractive. A controlled cross coming from (Albino white collected iris x a very red fulva) (Patteran x white). A self except for the narrow yellow signal. It is free flowering and of good increase. Lovely for flower arrangement or in the gardens. 36 in. **\$4.00**

SUSIE KLINE (Trichel 1951). See Introductions.

Siberian Iris

BLUE CHARM (Sass 1932) Beautiful large flowers of clear light blue. Lovely for flower arrangement. 36 in. **\$1.00**

CAESAR'S BROTHER (Morg. 1932) The darkest and best Siberian; black pansy-purple; tall and late blooming. H. M. A. I. S. 1936. **\$1.00**

COOL SPRING (W. L. Kellogg 1940) A charming Siberian with many flowers on widely branched stalks. The standards and styles are pearly blue. The very horizontal falls are much deeper on the upper part, blending out to the pearly blue of the standards. 30 in. **\$2.50**

ERIC THE RED (Whitney 1944) This brilliant red is truly an iris to attract the eye for it is the finest, most distinctive Siberian that has been produced. The flowers are extremely large with broad flaring falls of intense wine red. The standards are large and of the same glowing red. Many, many flowers on tall well branched stalks. H. C., A. I. S. 1943. H. M., A. I. S. 1944. A. M., A. I. S. 1946. 42 in. **\$5.00**

GATINEAU (Preston 1932) A wonderful clear blue iris with extremely large flowers on tall, sturdy stems; outstanding. **\$1.00**

HELEN ASTOR (Whitney-Kellogg 1938) A very lovely and distinctive variety. S. are wide and slightly fluted on the edge. F. are broad and round of rosy red with a white halo near the throat which is flushed with blue. H. M., A. I. S. 1941. A. M., A. I. S. 1942. 30 in. **\$3.00**

KENOGAMI (Preston 1938) A striking dark blue of tall and stately habit. A great addition to the garden. 40 in. **\$2.00**

MOONSPRITE (Jennings 1937) A silvery mauve overcast with lilac-pink. The tall graceful flowering stalks often carry ten blooms to a stalk, thus giving it a long flowering season. **\$2.00**

MOUNTAIN LAKE (Gersdorff 1938) A delightful clear medium blue self with semi-erect standards and flaring falls which are slightly ruffled at the edge. The center of the flower and styles are lighter blue. The flower has a crisp, cool appearance that is most effective in the garden. H. M., A. I. S. 1942. A. M., A. I. S. 1944. 36 in. **\$3.00**

OTTAWA (Preston 1928) A very distinctive iris with bright blue standards and falls in sharp but pleasing contrast to the white center of the flower. A. M., R. H. S. 1928. 36 in. **\$1.50**

ROYAL ENSIGN (H. F. Hall 1951). See Introductions.

SNOWCREST (Gage 1932) Tall white; large perfect flowers. H. M., A. I. S. 1936. **\$1.00**

TROPIC NIGHT (Morgan 1937) A new Siberian which surpasses Caesar and Caesar's Brother in beauty, form and color. The finest real deep blue. 40 in. **\$3.50**

TYCOON (Clev. 1938) The largest Siberian iris to date. The huge flowers of violet blue are of splendid proportion and are outstanding in the garden. H. M., A. I. S. 1950. 38 in. **\$3.00**

ZEST (Sturt. 1934) A brilliant iridescent blue with deep lavender pink style branches. It has great garden value. **\$1.00**

Spuria Iris

This beardless group is not well known, but really contains some of the most attractive, delicate flowered irises of the genus. Most of them bloom after the peonies have passed and are a great addition to the garden.

AZURE DAWN (Nies) A blue lavender flower of uniform color except for a pale yellow patch on the falls. 50 in. \$2.00

BATHSHEBA (Washington 1936) Medium sized flower of white and yellow, flaring falls and deep yellow signal. \$3.00

BEN LOMOND (Washington 1935) S. are electric blue and semi-flaring; F. of more brilliant blue with white venations around narrow yellow signal; tall and lovely. 48 in. \$3.00

BLUE ACRES (Mrs. T. A. Washington 1948) L. Full broad petaled blooms of palest Windsor blue (Ridgway). In effect it is a self with large cupped standards and almost horizontal falls. An exquisite shade of blue with a frosty silvery lustre on the heavily substanced petals. Dainty and charming. Strong clean foliage. 45 in. \$4.00

BRONZSPUR (Nies) The combination of sepia, old gold, and yellow is most unusual and pleasing. Lovely for flower arrangement, especially under artificial light. 55 in. \$2.00

DUTCH DEFIANCE (Nies) Very large bold, blue flowers that attract a great deal of attention. Splendid in form, finish, and substance, its charm is enhanced by a yellow signal patch on the frilled falls. 38 in. H. M., A. I. S. 1945. A. M., A. I. S. 1949. \$3.50

FAIRY WAND (Washington 1931) Old gold tinted with light blue; large flowers on tall erect stems, well above foliage. One of the best. 45 in. \$4.00

GRAMINEA Species from Europe; blue-purple; odor of ripe apricots; charming for flower arrangement. \$1.00

HAZY HILLS (Washington 1931) S. deep delft blue; F. hazy blue with old gold flush; Brilliant yellow signal and throat. Styles are smoky blue and old gold. 4 ft. \$3.50

LUMIERE (Washington 1936) Semi-erect standards of white with yellow midrib; Falls very flaring, of pale chrome-yellow with deeper yellow signal. Luminous center to the flower. 4 ft. \$2.50

MONTEAGLE (Washington 1936) Bronzy red purple self with yellow halo and deeper yellow signal. S. semi-erect; F. flaring Late blooming. Glowing color. \$3.00

RUSSET FLAME (Nies). A vigorous free flowering Spuria of rich russet coloring. Especially good as a cut flower. H. M., A. I. S. 1950. 40 in. \$3.00

SKYLINE (Washington 1936) Misty gray blue flowers with semi-erect standards and flaring falls. Soft canary yellow halo and long deep yellow signal. Charming. \$2.50

SUNNY DAY (H. P. Sass 1932) A tall gleaming yellow spuria of great beauty and form. H. M., A. I. S. 1936. \$2.00

Evansia and Vernal Iris

CRISTATA, BLUE. Sky blue flowers. 3 in. \$1.00

CRISTATA, WHITE. Creamy white; rare. 4 in. \$1.00

CRESTED FAIRY (Henry 1945) M. This very attractive iris is a typical cristata except in color. When the flowers first open the standards are palest lavender, soon paling out to white. The falls are rather of a deep blue. A lovely little bicolor that has been much admired. 3 in. \$2.50

CRESTED GEM (Henry 1948) From Alabama this tiny variety of Cristata is most appealing. An exquisite flower of palest China blue, delicately etched with a deeper blue on white around the yellow crest. The slender tube is golden yellow, and the flower is fragrant. It is amazingly floriferous and thrives in full sun or part shade. \$5.00

CRESTED IVORY (Henry 1948) This dainty form of iris Cristata has milk white flowers with a crest of palest yellow. that is scarcely perceptible. It is a refined bloom of great charm. \$2.50

TECTORUM, BLUE Lavender blue flowers. 8 in. \$.75

TECTORUM, WHITE Exquisite white; crests are marked with gold. \$1.50

VERNAL DAWN (Henry 1941) M. A form of iris Verna with flowers of palest pinky lavender. The orange crests on the falls are so intense that the flower seems as if it were a glowing opal. A gem for border or rock garden. 5 in. \$4.00

VERNAL EVENING (Henry 1945) M. Another flawless little gem. The deep lavender flowers have a blotch of dark purple velvet beneath the conspicuous orange crest. The foliage is green stained with purple. 4 in. \$5.00

VERNAL FAIRY (Henry 1945) E. M. A most enchanting and showy little iris. The white standards are heavily clouded over with lavender. The white falls have brilliant orange crests. It is a most beautiful and distinctive reverse bicolored form of Verna. 4 in. \$5.00

VERNAL NIGHT (Henry 1947) E. This charming little iris is by far the darkest and richest in color of this group of fascinating irises. According to Ridgway, the standards are Bradley's violet, and the flaring falls are Dark violet. The general effect is Royal purple, and the striking orange crests are very rich and brilliant. A handsome and unusual bit of color for the rock garden. 4 in. \$5.00

VERNAL SIMPLICITY (Henry 1945) E. M. A fitting name for this delightful little lavender self for it is without even a touch of orange or yellow in the crests. Cool and refreshing it is especially nice for those wishing to keep to a lavender color scheme. 4 in. \$4.00

VERNAL SNOW (Henry 1941) M. The blooms are pure white, and the vivid contrast of the fiery orange crests on the falls accentuates the purity and perfection of the flowers. A delightful miniature iris. A form of iris Verna and especially adapted to border or rock garden. 5 in. \$4.00

Hemerocallis

AFTERGLOW (Stout 1941). A charming pastel blend of pale buff with a touch of pink toward the throat. July. Evergreen. 36 in. \$2.00

AMBER LUSTRE 45-84 (Nesmith 1949) Hemerocallis lovers have come to realize that they need soft blended colors to intersperse among the deeper tones, and Amber Lustre is excellent for this purpose. The background of the large full flowers is apricot yellow with a pigmentation of light pinky orange on both sepals and petals. Heavy substanced flowers, strong sturdy stalks. July-Aug. 47 in. \$5.00

ANNIE LAURIE 37-119 (Nesmith 1940) Beautifully reflexed flowers with a background of soft maize yellow overlaid with medium carmine rose, this color extends well down into the delicate yellow throat of the bloom. July-Aug. 38 in. \$2.00

ANTIMONY 37-91 (Nesmith 1940) A flaring and frilled flower of pinkish apricot buff. The petals have a touch of antimony yellow which carries well down to the throat of soft javel green. July-Aug. 40 in. \$1.00

APRICOT QUEEN (Sass Bros. 1948). A peachy apricot with large well formed flowers borne on tall graceful stalk. A lovely hemerocallis. Aug. 40 in. \$3.00

ARCTIC STAR 39-43 (Nesmith 1940). Starry trumpet shaped flower of Bartya yellow flushed slightly deeper toward the center. The effect of the large flower is a creamy buff lightly waved and fluted at the edge. Aug. 40 in. \$2.50

AUGUST ORANGE (Stout 1946) Rich deep orange flowers that are larger and more showy than Multiflora, one of its parents. Fine branching and growth. Semi-deciduous. August. 36 in. \$3.00

BALLET DANCER 43-116 (Nesmith 1946). Dainty and charming, this hemerocallis has many appealing qualities and gives a very pink effect in the garden. The full flowers are smoothly finished and are between Buff pink and Grenadine pink (Ridgway), but the flat finish of the plates lack the luster of these smoothly finished blooms. July-Aug. 38 in. \$3.00

BALLET GIRL (Wheeler 1946). A star-like flower of rosy red shading to pink toward the edges with an almost white border on the petals. July. 32 in. \$7.50

BALTIMORE BELLE 47-7 (Nesmith 1948) Charming and cheery, this rosy pink is lovely for flower arrangement or border planting. The large open flowers are Orient pink with a halo of deeper jasper pink just above the creamy yellow throat. Tall, with good branching, it gives a very pink effect in the garden. July-Aug. 43 in. \$3.00

BARONET (Stout). The petals and sepals are a sprightly fulvous red, blending into the orange throat. The semi-rounded flowers are recurving, and the sharp contrast of the two colors is most pleasing. June-July. 28 in. \$1.00

BANDANA 38-404 (Nesmith 1945). Gay and brilliant as a brightly colored kerchief, the rich tomato red and orange yellow tones are so skillfully blended that it is one of the most colorful hemerocallis in the garden. The petals have a narrow fluting of yellow at the edge. The sepals are a smooth even blending of the colors. Aug. 40 in. \$3.00

BERTRAND FARR (Stout 1941) Full flowers with recurving petals and sepals. The color is grenadine pink (Ridgway) with darker rose coloring in the veins. July. 36 in. \$2.00

BLACK CHERRY (G. Douglas 1945) A hemerocallis that is well named for the color is almost identical with the deep red purple shades of large black cherries. The flowers are beautifully formed with recurving petals and sepals. A flower so rich in black red tones that it stands out in the garden. H. M., T. H. S. 1950. July-Aug. 36 in. \$2.00

BLACK FALCON 39-125. (Nesmith 1941) Incredibly dark, this is the nearest to black of any hemerocallis I have produced. The flowers are large, open and wavy at the edges with a shallow pale canary yellow cup. A stunning and unusual hemerocallis. July-Aug. 38 in. \$4.00

BLACKHAWK (Wheeler 1947) A deep chocolate maroon with golden throat. Cup shaped with wide petals. July. 30 in. \$5.00

BLACK MAGIC (Douglas 1949) Black purple hemerocallis that do not fade are rare, but this one holds its color throughout the day. A full rounded self except for the pale chartreuse cup, and this brings out in pleasing contrast the deep dark color of the bloom. The flowers are cup shaped and an established clump will have nearly forty flowers on tall well-branched stalks. July-Aug. 38 in. \$8.00

BLANCHE HOOKER (Stout 1946) The brightest early flowering red in the garden. Rich orange cup. When established it blooms again in September. Evergreen. H. M., T. H. S. 1950. June-Sept. 36 in. \$3.00

BLITHESOME 40-357 (Nesmith 1945) A charming cream self with heavy substance and delicious fragrance. There is a dense opaque quality that is different from other cream yellows. The flowers are open in form with a strong raised midrib on the petals. Well branched. Aug. 48 in. \$3.00

BOLD COURTIER (Nesmith 1939) The Pompeian rose petals are broad and especially full at the throat with a creamy yellow line down the center. The yellow sepals are re-curved, and slightly flushed with the rose of the petals. A beautiful outstanding bi-color. A. M., T. H. S. 1950. July-Aug. 38 in. \$2.50

BONNY RUFFLES 48-14 (Nesmith 1949) A cup shaped flower of Chalcedony yellow with slightly recurving petals and sepals. The flower is a self even to the center of the cup. Both petals and sepals are fluted giving a very ruffled effect. It is an evening bloomer, opening about five o'clock in the afternoon. Evergreen. 36 in. \$3.00

BRIGAND 38-345 (Nesmith 1944) A big flower with a distinctive pattern of rose and mahogany on the large full blooms. The flowers have broad recurving petals and sepals, with a cream midrib on the petals, and a halo of deep rose in the throat. Well branched stalk. July-Aug. 43 in. \$3.00

BRIGHT MELODY (Nesmith 1941) A flaring open flower of Pompeian red powdered with flecks and dots of gold and henna. Luminous flowers of great charm with heavy substance on high branching stalks. July-Aug. 40 in. \$3.50

BRUNETTE (Stout). One of the earliest reds to bloom. The full flowers are medium in size, and the plants bloom profusely. June. Evergreen. 36 in. \$1.25

BURGUNDY (Nesmith 1937) Sepals and petals are an even tone of wine purple with soft yellow lighting in the throat, and deeper rose flush in the halo. July. 39 in. \$2.00

BURNT ORANGE 43-81 (Nesmith 1948) An unusual compact flower of deep yellow embellished by a velvety flush of reddish orange on the petals. Tall with rather high branching, it makes a very showy clump in the border. July-Aug. Semi-deciduous. 44 in. \$4.00

CABALLERO (Stout) Large lily-like bicolor with rose petals and yellow sepals. A charming hemerocallis that is very effective in the garden. Evergreen. 40 in. \$1.00

CANARI 39-32 (Nesmith 1940) Large open flowers of palest canary yellow shading to very light Dresden yellow in the throat. The blooms have a satiny finish and seem like a spray of cream lilies. The scapes are well branched with twenty buds to a stalk. Evergreen. July-Aug. 38 in. \$3.00

CANYON PURPLE 45-50. (Nesmith 1949) A distinctive new break in color. Large full open flowers of raspberry purple with a deeper flush just above the pale lemon cup. Both petals and sepals are lightly ruffled at the tips. A self, even the stamens and pistil are purple. Strong stalks and fine branching. July-Aug. 45 in. \$6.00

CAPRICE (Stout 1946) An early flowering brownish red with cup shaped blooms. The sepals are bordered with cadmium yellow that extends down into the center of the flower. Evergreen. July. 39 in. \$1.50

CERISE (Wheeler 1947) The striking color of this flower comes from the rosy crimson overflush on a ground of scarlet. Tall with good form and branching. H. M., T. H. S. 1950. July-Aug. 45 in. \$5.00

CHANTICLEER (Wheeler 1948) A bright crimson self with a violet sheen. Throat and midrib of sepals is orange yellow. Sepals more recurved than the petals. July. 30 in. \$3.50

CHIEF FONTENELLE (Sass Bros. 1949) Large broad flowers with apricot orange petals and sepals of rich golden orange made more brilliant by the darker eye zone. July-Aug. 38 in. \$3.00

CHINA SEA (Nesmith 1940) The full compact flowers are pale Chinese yellow deepening into a halo of warm salmon buff. Firm glistening substance, good branching. July-Aug. 40 in. \$3.00

CIRCE (Stout 1937) Clear yellow flower of medium size. The blooms are well placed on freely branched stalks. Very effective in the garden. July. 40 in. \$1.00—3 for \$2.50

COLLEEN (Nesmith 1937) Full flowers with a soft buff under color flushed salmon on petals and sepals. Open flowers on well branched stalks. Very free flowering. July-Aug. 40 in. \$2.00

COPPER COLONEL (Sass Bros. 1948). Large recurving flowers with a yellow undercolor, heavily flushed with rich reddish orange, especially on the petals. Tall and free flowering. July-Aug. 40 in. \$4.00

CRIMSON STAR (G. Douglas 1950) Large open flower of crimson, flushed deeper on the petals and sepals just above the gold cup. The brilliance of the flowers is outstanding, and it makes a stunning clump in the garden. Mr. Douglas considers it the reddest hemerocallis he has bred. 15 or more buds. Semi-evergreen. July. 36 in. \$12.00

CYCLOPS (G. Douglas 1950) Well named for it is a giant in height of stalk and size of the flower. The huge light chrome yellow blooms have a reddish cinnamon wash at the center of the petals. The leather-like substance of the flowers is the heaviest I have ever seen in a hemerocallis and for that reason it has great possibilities in breeding. Unique rather than beautiful, it is a hemerocallis that will interest all hybridizers. Semi-evergreen. July-August. 60 in. \$4.00

DAILY DOUBLE (G. Douglas 1946) A double flower of attractive form and color. The flowers are Mikado orange (Ridgway) faintly flushed with a deeper tone. The contour of the flower is the same as other hemerocallis, but in addition it has three perfect petaloids in the center of the bloom as well as stamens and pistil. Usually the flowers that open one day are double, followed the next day by some that are single, but most of the flowers keep this doubling. A step forward toward double hemerocallis. July-Aug. 40 in. \$3.50

DANCING FIRE 47-67 (Nesmith 1949) Medium sized flowers of great brilliance and garden value. The undercolor is flash red with a deeper red flush extending over the petals. Crisp fluting on edges of sepals and petals. Cup of flower is chrome yellow. July-Aug. 35 in. \$9.00

DAUNTLESS (Stout 1935) Pale Cadmium yellow with greenish throat and delicate fulvous touch in center of each petal. A great garden favorite. 2½ ft. July-Aug. \$1.00

DEBONAIR 39-27. (Nesmith 1940) Large spreading blooms with recurving segments. The heart of the flower is lemon chrome, blending out to salmon pink. Tall and floriferous with many blooms on each stalk. July-Aug. 40 in. \$2.00

DEVON CREAM (Nesmith 1945) Few hemerocallis have the thick heavy substance of this pale creamy yellow. The blooms have wide petals and sepals that are beautifully fluted on the edges. Strong sturdy stalks. Withdrawn to increase stock, I can now offer it again in limited quantity. H. M., T. H. S. 1950. July-Aug. 39 in. \$5.00

DOLLY VARDEN (Nesmith 1939) Open full flowers of Chinese coral with slight lines of deeper rose on the petals and sepals. Very floriferous with sturdy stalks. Lovely in half shade. July. 40 in. \$2.00—3 for \$4.50

DRESDEN DOLL 45-106 (Nesmith 1946) Blended flowers with a soft cream background flushed with Salmon buff. The substance of the flowers is so crisp and firm that the petals and sepals stand out like bits of dainty china. Tall and very widely branched. July-Aug. 50 in. \$2.00

DUNCAN (Wheeler 1947) The earliest dark maroon from this hybridizer. The flowers are large with medium segments and a gold throat. Evergreen. June. 28 in. \$1.50

DUNE SPRITE 45-113 (Nesmith 1950) The soft delectable color we find in a sun ripened cantaloupe best describes the shade of this large, full petaled flower. The nearest color to it is medium Egyptian Buff. A hemerocallis of great charm, its beauty seems to be in the soft melon color accentuated by the white midrib on the petals, and the clear lemon ice color at the heart of the bloom. 20 or more buds. Semi-deciduous. July-August. 39 in. \$8.00

EBONY BOY 43-86 (Nesmith 1948) If you desire warm rich color for rock garden or front of the border planting. I recommend this variety. A late dark red purple self with a tiny gold cup. Not tall, in fact almost a dwarf, the well formed flowers are medium in size, and in keeping with the strong slender stalk. Aug.-Sept. 20 in. \$1.00—3 for \$2.50

ETRUSCAN GOLD 45-178 (Nesmith 1950) Rich Cadmium Orange self with recurved petals and sepals. The smooth firm textured flowers are similar in color to Doubloon, but when established it is a re-bloomer. Free flowering and good branching. 30 buds. Semi-deciduous. Aug. 40 in. \$3.50

FAIRY JEWELS 43-89 (Nesmith 1947) The tallest and latest flowering pink that I have seen. The full open blooms are between Azalea and Shrimp pink, a self with very firm substance, the color is smooth and extends to the center of the flower. An added attraction is the splendid branching up and down the very tall stalk, and when established, many of the branches re-branch. H. M., T. H. S. 1950. Aug.-Sept. 46 in. \$5.00

FAIRY LUSTRE 47-17 (Nesmith 1948) A full spreading flower of light Jonquil yellow, crisped and ruffled at the edges. Fragrant, and late blooming, the flowers seem enveloped with glistening frost work, that gives a delightful and entirely different effect from any other hemerocallis. Semi-evergreen. Aug.-Sept. 40 in. \$5.00

FAR NORTH 45-180 (Nesmith 1946) There is a great demand for good large flowered light yellow hemerocallis for most of our gardens need them to lighten up drab spots in late summer to say nothing of their cool refreshing charm. The heavy substance flowers are large and full borne on very strong sturdy well branched stalks. Aug. 52 in. \$7.00

FIREBRAND (Stout 1946) Rich crimson red flowers with a conspicuous orange throat. The petals of the open flaring flower are lightly twisted at the tips as in Wau-Bun. Evergreen. June-July. 36 in. \$3.00

FIRE-OPAL 37-40 (Nesmith 1946) A very recurring bicolor with the sepals much deeper in color than the petals. The petals are deep cadmium yellow with a cream midrib. The under color of the sepals is zinc orange heavily flushed with Carnelian red. Especially good for flower arrangement. July-Aug. 38 in. \$3.00

FLAMBOYANT (G. Douglas 1947) The name is most descriptive of this stunning hemerocallis. The petals and sepals are brilliant deep Indian yellow set off by a bright red halo. The gracefully recurving petals and sepals are medium in width with heavily fluted edges. The stalks are tall and strong. H. M., T. H. S. 1950. July-Aug. 42 in. \$5.00

FLAVINA (Fewkes 1933) A charming flower of bright lemon-yellow. Quite distinct from any other hemerocallis, and a delightful rock garden subject. 24 in. May-June. \$2.00

FULVA ROSEA The most beautiful of any known species of hemerocallis. The flowers are a lustrous rose pink, and are borne on tall graceful stalks. 3½ ft. July-Aug. \$1.50

GARNET ROSE (Milliken 1948) An outstanding garnet-red that has won high praise in all parts of the country. The wide open blooms have a rich velvety finish that glows in the sunlight. Vigorous evergreen foliage. H. M., T. H. S. 1950. 38 in. \$15.00

GAY CHARMER (Sass Bros. 1949). A bright and gay flower of tawny rose with a midrib of yellow extending into the yellow cup. July-Aug. 40 in. \$3.00

GAY GALLANT 47-48 (Nesmith 1950) Gay and festive as the name suggests, this full open flower has an undercolor of Mandarin Red overflushed with Geranium Lake that deepens just above the tangerine orange cup. The sepals have a lighter border such as we find in Honey Redhead. Large flowers, charmingly fluted. Long season of bloom, and good branching. 30 buds. Semi-deciduous. 41 in. July-August. \$7.00

GAY HEART 45-19 (Nesmith 1939) Bright and gay as the name implies. The outer portion of the petals and sepals is Hollyberry red blending into Apricot yellow at the center. The petals have a broad midrib of the same yellow extending into the six pointed star of the yellow cup. Both petals and sepals have a decided ruffle on the edges. A bold showy flower. Semi-evergreen. July-Aug. 36 in \$3.50

GAY ROMNEY 46-176 (Nesmith 1948) Bright and gay with gypsy colors, this full flowered variety has an undercolor of antique ruby red with a deeper velvety flush on upper part of the petals and sepals, extending well into the throat of the bloom. Floriferous and brilliant with many blooms on tall well branched stalks, it is exceptionally good for color accent in the garden. July-Aug. 42 in. \$4.00

GAY TROUBADOUR 39-48 (Nesmith 1941) Entirely different and charming is this most unusual red and cream yellow bicolor. The petals are bright Indian red in stunning contrast to the sepals of frosty maize yellow. Very flaring flowers. A flower of great beauty and refinement and a great favorite with garden visitors. July-Aug. 40 in. \$1.50

GEORGIA (Stout 1946) A pastel blend of rosy peach tones with large full widely spreading flowers. The general color is similar to the daylily B. H. Farr but it is later blooming. Evergreen. H. M., T. H. S. 1950. July. 38 in. \$2.50

GLOWING GOLD 37-77 (Nesmith 1940) Large persimmon orange flowers with petals slightly twisted at the tips as in Wau-Bun. A broad recurving flower and it is the most brilliant orange that I have seen. July-Aug. 36 in. \$3.00

GOLDEN GRAIN 38-365 (Nesmith 1944) All golden yellow, these large lily like blooms are most effective in the garden. Tall with full ruffled flowers of strong firm texture, and exceptionally good branching, this hemerocallis always attracts attention. July-Aug. 45 in. \$2.00—3 for \$4.50

GOLDEN WEST (Sass 1933) Large yellow flowers of extremely fine substance. 4 ft. July 5th-Sept. 10th. \$1.00

GUIDING LIGHT 43-91 (Nesmith 1949) Lovely frosted very pale melon with the petals and sepals fluted on the border. The flower is a self even to the heart of the flower. The flowers are medium in size and beautifully finished. July-Aug. 36 in. \$5.00

HARVEST GOLD 46-232 (Nesmith 1947) A multiflora hybrid of Cadmium orange with full ruffled flowers, borne on slender strong stalks. The blooms are larger than most multiflora hybrids. Late blooming, it adds a needed bit of color at this time of year. Aug.-Sept. 45 in. \$3.00

HER GRACE (Nesmith 1944) A patrician flower of palest yellow with large open blooms of strong firm texture. A great favorite in the garden. Semi-evergreen. July-Aug. 38 in. \$2.50

HESPERUS (H. P. Sass 1940) A lemon chrome with very large open flowers of splendid form and substance. The stalks are tall, well branched and sturdy. Stout Award. T. H. S. 1950. July-Aug. 46 in. \$1.00

HIGHLAND CHIEFTAIN 39-45 (Nesmith 1940) A large tubular self of wine purple with the color evenly distributed through the petals and sepals carrying well down into the cool yellow throat. July-Aug. 42 in. \$2.00

HONEYDEW 46-233 (Nesmith 1947) Cool and delectable this Melon buff is a lovely companion for Harvest Gold. The flowers are similar in shape, height and blooming season. There is a nicety of finish about these flowers that makes them delightful for the garden, and ideal for flower arrangement. Aug.-Sept. 45 in. \$3.00

HONEY REDHEAD 40-222 (Nesmith 1942). A very brilliant and unusual combination of colors that is praised by hemerocallis judges. The flowers are open and flaring of velvety yet bright red with a distinct border of creamy yellow. Medium height with good branching. July-Aug. 38 in. \$1.50

IVORY CHALICE 40-503 (Nesmith 1946). Full medium sized flowers of very pale yellow (reed yellow). Lightly ruffled at the edges. The flowers have very heavy substance and are borne on tall closely branched stalks. Very lovely as a cut flower or in the garden. Aug. 40 in. \$4.00

JAVA 39-63 (Nesmith 1940) Lovely bell shaped flower of delicate apricot orange evenly flushed with rosy cinnamon which extends far down leaving only a tiny apricot cup in the center. Late blooming. Aug. to Sept. 37 in. \$1.00

JUDGE ORR (Orr 1939) A soft orange yellow that blooms at iris time. Prolific and free flowering. Nice planted with Louisiana blue iris. June. 30 in. \$1.50

KENTUCKY CARDINAL 46-113 (Nesmith 1949) A rich Cardinal red flower with very velvety finish on the petals, the sepals are smoothly finished with just a touch of yellow at the tips. Open flaring blooms of great brilliance. When established, it blooms the second time, thus giving a long flowering season. Aug.-Sept. 40 in. \$7.00

KILLARNEY LASS 39-121 (Nesmith 1944). Captivating and charming, it gives a very pink effect in the garden. The center of the petals is bright geranium pink bordered by soft flesh pink. The sepals are flesh pink lightly flushed deeper. A very lovely hemerocallis and a splendid parent for breeding pinks. Aug. 36 in. \$7.00

LADY FAIR 39-105 (Nesmith 1946) Some flowers are brilliant in the garden while others are entrancing with their delicate colors and Lady Fair is one of the latter for it is a blending of Jasper and flesh pink with a creamy undertone. The large flowers have a glistening sheen and give a charming effect in the garden. July-Aug. 38 in. \$5.00

LIPSTICK 47-7A (Nesmith 1950) A flaring cup-shaped flower of Damask Red with very little yellow showing at the base of the petals and sepals. The flower has a touch of velvet toward the center, and over all there is a satiny finish seldom found in a red hemerocallis. Beautiful rich color. 25 buds. Semi-deciduous. July-August. 40 in. \$7.00

LUSTROUS 38-378 (Nesmith 1942). In color these lovely flowers remind me of the cheery Clusiana tulips. It is a large flower with bright pink color overflushed with a soft lustrous sheen. Tall and well branched with many flowers on each stalk. July-Aug. 40 in. \$3.00

MAGIC MOONLIGHT 40-385 (Nesmith 1950) Especially adapted to a garden or terrace where one sits in late afternoon and evening is this very pale Mimosa Yellow. Tall and stately, the flowers open about five in the afternoon and last well into the next day. Free flowering, and vigorous. Lovely planted in half shade with pale lavender Hosta Fortunei. Evergreen. July-August. 45 in. \$4.00

MANCHU (Stout 1946) Boldly recurving flowers of apricot-orange with a prominent eye zone of deeper color just above the cool lemon yellow throat. Semi-evergreen. 36 in. \$3.00

MARTHA WASHINGTON (Wheeler 1943) The full formed flowers of silvery old rose are carried on multiflora stalks with as many as 60 buds per stalk. Charming and different. July. 38 in. \$10.00

MASSASOIT 39-115 (Nesmith 1940) The petals and sepals are lightly ruffled on the edges, and the reddish copper flowers are made more brilliant by the blaze of the Indian red on the petals. The tallest well branched hemerocallis that I have seen. July-August. 5 ft. \$3.00

MATADOR 37-21 (Nesmith 1940) A bright, rich mahogany flower with a deeper velvety flush on the petals. A full cup-shaped bloom of great brilliance. Tall with good branching. July-Aug. 40 in. \$1.50

MINUET 38-142 (Nesmith 1941). Subtle blend of frosty pink shadowed deeper rose on the petals and sepals giving a rosy pink effect. The flowers are of Fulva rosea form, but larger and the scapes are better branched. Aug. 40 in. \$1.50

MISSION BELLS (D. Hall 1945) Large wide petaled, ruffled flower of clear medium yellow producing up to 52 flowers to a stalk on established plants. A fine variety that is a strong grower and a free bloomer. H. M., T. H. S. 1950. July-Aug. 40 in. \$3.00

MME RECAMIER 43-100 (Nesmith 1948) Full recurved flowers of Récamier pink gaily painted watermelon pink on tips of the petals and sepals. The smoothly finished blooms are evenly spaced on tall well branched stalks. Cool and refreshing in color, it is the latest flowering pink in the garden. Aug.-Sept. 42 in. \$7.00

MONTE (Russell 1945) A firm substantanced bicolor with wide petals of rosy brown and sepals of soft light yellow. Wide open flower. July-Aug. 36 in. \$2.00

MOONLIGHT COCKTAIL (G. Douglas 1946). Cool and refreshing, this lovely pale apricot is charming for flower arrangement or in the garden. The flowers have broad petals with a creamy midrib, and over the whole bloom is a very frosty sheen. July 48 in. \$4.00

MOONRAY 37-80 (Nesmith 1940) A pale yellow with a clear cut semi halo of Pompeian red. The recurved petals and sepals are waved and flare widely from the shallow cup. Dainty and charming. July-Aug. 30 in. \$1.50

MOROCCO RED 38-168 (Nesmith 1940) Brilliant flower of velvety Morocco red with the color evenly placed on the petals and sepals, extending to the heart of the flower leaving just a bit of orange showing in the cup. July-Aug. 38 in. \$1.50

ORANGE BEAUTY (H. P. Sass 1944) A very handsome orange self with broad segments and open form. Very fragrant. Floriferous and a good grower. A. M., T. H. S. 1950. July-Aug. 40 in. \$4.00

PAGE BOY 38-43 (Nesmith 1940) Medium sized bell shaped flowers of deep chrome on tall scapes carried above the foliage. The variety has multiflora blood, carrying forty flowers on one stalk. Aug.-Sept. 44 in. \$1.00

PAINTED LADY (Russell 1942) Large flowers with a yellow undercolor heavily flushed with coppery cinnamon. Full petaled blooms beautifully ruffled. An outstanding variety of great beauty. Evergreen. A. M., T. H. S. 1950. July. 36 in. \$3.50

PATRICIA (Stout 1935) A clear and even tone of pale yellow with a greenish throat. A charming and full formed flower with pronounced fragrance. A. M., T. H. S. 1950. July. 36 in. \$1.00

PEPPERMINT (G. Douglas 1948) Bright and delectable as pink peppermint candy, this hemerocallis possesses great color appeal. The large open flowers have a pale cream midrib on the petals that is in pleasing contrast to the pinkness of the flower. July-Aug. 43 in. \$4.00

PERSIAN PRINCESS (Nesmith 1938) The petals are deep velvety red with a heavy overflush of purple, the sepals are a shade lighter, but with the same depth of color. An impressive hemerocallis. July-Aug. 40 in. \$2.00

PETER PAN (Stevens) The brightest and best early blooming red. The flowers are medium in size and are borne in clusters on very well branched stalks. Bright and cheery, it is a great addition to any garden. June-July. 36 in. \$2.00

PETER PUMPKIN 43-43 (Nesmith 1946) A perfectly branched hemerocallis that is as deep orange in color as a Hallowe'en Jack-o-lantern. A very full cup-shaped flower with broad overlapping petals and sepals that are fluted on the edges. An absolute self with many flowers of heavy vellum substance. July-Aug. 38 in. \$3.00

PICKWICK (G. Douglas 1950) Colorful and with great garden value, this red semi-blended bicolor is a great favorite in the Douglas garden as well as in our own. The broad petals are Indian Lake with a mid-rib of Spanish Orange, while the sepals are a blending of these two colors and are lighter than the petals. A large full slightly recurving flower. The stalks are well branched and it is vigorous in growth. Semi-evergreen. July. 36 in. \$3.00

PIMENTO 43-126 (Nesmith 1949) Bright and gleaming, this variety is stunning as a cut flower or for border planting. A star shaped flower of intense red; of open spreading form the petals are fluted and the rich orange cup seems to illumine the whole flower. July-Aug. 38 in. \$6.00

PINK CHARM 38-181 (Nesmith 1940) Beautiful open flower with very recurving petals and sepals of soft Ocher red giving the effect of a deeply colored coral pink lily. The center of the flower shows a star of light cadmium in pleasing contrast to the pink stamens. Aug.-Sept. 40 in. \$2.00

PINK LOTUS 45-237 (Nesmith 1949) Large and very spreading flowers of light pink coral with the heart of the bloom shading out to pale creamy buff. A very open flower of attractive and unusual form. July-Aug. 35 in. \$7.00

PINK PARADISE (G. Douglas 1950) Appropriately named for it is a heavenly pink color. An open cup-shaped flower of pale Jasper Red with a slightly deeper overlay of pink on the petals blending down into the cool Mimosa Yellow throat. Delicate and dainty in color, it stands hot sun and does not wilt or fade. Especially well branched. Semi-deciduous. July-August. 38 in. \$10.00

PINK PETTICOATS 43-30 (Nesmith 1949) All frilled and ruffled, this self of pink coral bells coloring has very recurving petals and sepals. A full flower with a deeper rosy flush just above the Spanish yellow cup. Tall with rather high branching it is especially good for back of the border planting. Gives a very pink effect. August. 50 in. \$7.00

PINK PRELUDE 45-37 (Nesmith 1950) This is the lovely Dawn Pink that many will remember under the number 45-37 for since its first flowering it has been in high favor with all hemerocallis fanciers that have visited the garden. A self except for a pale flesh pink mid-rib on the petals and just a touch of cool yellow at the base of the sepals and petals. The lightly fluted flower does not seem to have a trace of salmon in it. Large full flowers and good branching, it is the finest pink hemerocallis that I have bred. Semi-evergreen, stock limited. July-August. 39 in. \$20.00

PIQUANTE (Nesmith 1940) An unusual and charming self of Eugenia rose with cadmium yellow cup. The blooms give a raspberry pink effect in the garden. Aug. 40 in. \$3.00

POTENTATE 39-100 (Nesmith 1943) Luminous flower of pansy purple, so smoothly finished that the surface of the bloom has a distinct satiny sheen. It is a self with broad full petals and sepals, even the stamens and pistil are done in purple. Outstanding in this color. A. M., T. H. S. 1950. July-Aug. 42 in. \$7.50

POWDER PINK 46-81 (Nesmith 1950) Colorful and charming is this lovely watermelon-rose flower (Rose Opal). A self except that the petals and sepals are slightly lighter at the tips. Cup-shaped, graceful flowers of medium size and exquisite color. Semi-deciduous. July-August. 36 in. \$7.00

PURPLE DUSK 43-70 (Nesmith 1947) This very dark red purple always attracts attention in the garden. The large flowers with broad petals and sepals are Ox-blood red with no other color showing in the throat. It is one of the latest flowering in the dark red purple class, and is especially good for color accent in the garden. Aug. 42 in. \$3.00

PURPLE FINCH 39-117 (Nesmith 1942). A stunning hemerocallis with the same iridescence we see on the head of the colorful bird the Purple Finch. A very rich glowing flower with full recurving petals and sepals of red purple with a darker flush above the cup of yellow. The stalks are strong with twenty or more flowers. July-Aug. 42 in. \$5.00

PYGMALION 44-1 (Nesmith 1948) The charm of this winsome bicolor is in the skillful blending of coral pink and creamy yellow. The pastel pink petals and sepals of deep ivory merging into creamy yellow in the heart of the flower. The stalks are exceptionally well branched with many buds, thus giving a long season of bloom. July 1st to Aug. 20th. 40 in. \$3.50

QUEEN ESTHER (H. P. Sass 1949) A crimson self of great beauty and brilliance. The medium sized flowers are especially well formed and the growth vigorous. H. M., T. H. S. 1950. July. 36 in. \$4.00

RED HUSSAR (Nesmith 1943) The open flaring flowers are carmine red with a deep orange cup. A brilliant hemerocallis that stands out in the garden. July-Aug. 38 in. \$2.50

RED PARAGON (G. Douglas 1950) The name suggests a flower of special excellence and it is well suited to this glowing red self. The large star-shaped blooms are Chrysanthemum Crimson with a deeper velvety halo of Oxblood Red just above the small deep yellow cup. Finely formed heavy subtended blooms with a fine garden value. Semi-evergreen. July-August. 36 in. \$8.00

REGAL LADY 38-28 (Nesmith 1941) A stately rose bicolor of early blooming habit. Large flowers with deep rose petals blending into a deeper rose zone bordering the pale yellow cup. The cream sepals are faintly flushed with rose giving the effect of a bicolor. July. 40 in. \$1.00

ROSE GEM (Stout 1946) Rich old rose in color, the large flowers have a deeper eye-zone on the petals just above the pale yellow cup. Evergreen. H. M., T. H. S. 1950. July-Aug. 46 in. \$3.00

ROSE UNIQUE (G. Douglas 1949) Deep watermelon red flushed darker just above the greenish yellow throat and over the whole flower is a lustrous sheen. The petals and sepals are medium in width, but have heavy substance. Tall and floriferous. July-Aug. 48 in. \$4.00

ROYAL GUEST (G. Douglas 1949) Mr. Douglas considers this one of his best hemerocallis. A beautiful rose purple with a cool green throat. Large well shaped blooms with an exquisite finish to the whole flower. The stalks are very well branched, and it increases rapidly both by proliferations and regular plant increase. July-Aug. 38 in. \$8.00

ROYAL RUBY 39-116 (Nesmith 1942) A marvelous flower of almost crimson red with glow and life throughout. It has the most intense red color that I have seen in a hemerocallis. A smoothly finished flower with full semi-reflexed petals and sepals; a self with almost no yellow in the cup. The stalks are regular height with good branching. A. M., T. H. S. 1950. July-Aug. 38 in. \$4.00

ROYALTY 39-20 (Nesmith 1940) Large open flower of deep maroon with broad petals and sepals. The star shaped cup is rich yellow with the maroon coloring extending down in the throat. The flower is a true maroon with a velvety almost blue purple sheen on the petals and sepals. Fifteen to twenty blooms on each scape. July-Aug. 40 in. \$2.50

RUDDY RED 40-33 (Nesmith 1944) This hemerocallis has depth of color yet gives a glowing red effect. The petals of Vandyke red are smoothly finished. The sepals have a yellow background flushed with red. July. 38 in. \$2.00

SAFFRON 39-23 (Nesmith 1940) Saffron yellow self with a full halo of brilliant zinc orange. The petals are slightly twisted as in Wau-Bun. Very colorful with great garden value. Plant near Satsuma, China Sea, and Summer Gold for lovely gradation of color. July-Aug. 38 in. \$1.00

SALADIN (Stevens 1947) A very bright almost cherry red flower with wide open segments and satiny finish. A clear toned red with heavy substance and excellent form. July-August. 38 in. \$4.00

SALMON KING (G. Douglas 1950) Full cup-shaped blooms of rich Salmon shading into peach tones above a soft cream throat. A happy combination of colors that is most pleasing. The flowers have a frosty finish and heavy substance, blooming just above the strong sturdy foliage. Late and long season of bloom. Semi-evergreen. July-August. 34 in. \$5.00

SAN TOY 45-30 (Nesmith 1948) Neat and trim, the full small flowers are deep rubient in color. A self with heavy substance, and very fine branching, it is especially nice for flower arrangement as well as in the garden. July-Aug. 38 in. \$2.00

SATSUMA 39-30 (Nesmith 1940) A very delicate apricot flower with flaring slightly recurving petals, the halo flushed a deeper apricot buff. The flower has an opaque frosty sheen tinted with the faintest pinkish apricot near the throat. Aug. 40 in. \$2.00

SCARLET SUNSET (Wheeler 1947) This hemerocallis is well named for the flowers contain all the rich red colors of a flaming sunset. The star shaped recurving blooms are medium in size but their intense color makes them stand out in the garden. H. M., T. H. S. 1950. July. 36 in. \$6.00

SHADOW ROSE 41-121 (Nesmith 1945) Firm compact flowers of rosy pink shadowed by deep rose in the center, giving a rose pink effect in the garden. Tall, well branched and late blooming! Aug.-Sept. 40 in. \$3.00

SIENNA 38-290 (Nesmith 1940) A bell shaped flower with petals and sepals recurved, frilled and almost ribbed. The yellow background is flushed apricot orange with very little yellow showing in the cup. Aug.-Sept. 38 in. \$2.50

SPANISH RED 46-194 (Nesmith 1950) The very widely flaring flowers have a base color of Yellow Ochre with a very heavy flush of Garnet Brown, and the deep orange of the cup extends upward into a mid-rib on both petals and sepals. The whole flower gives a vivid red-brown effect that possesses great carrying qualities in the garden. Tall with wide branching. Deciduous. 35 buds. 40 in. \$4.50

SPITFIRE (Russell 1942) A bright red of medium size that has a long season of bloom. 30 in. \$1.00

STARLIGHT (Nesmith 1936) Tall well branched stalks bearing many flowers of palest yellow. The blooms are large and the petals fluted. A lovely hemerocallis. Evergreen. July. 40 in. \$2.00

SU-LIN 40-215 (Nesmith 1941) The name is Chinese and freely translated means "a little bit of something precious," therefore it seems a fitting name for this lovely bi-color of pale mauve and creamy yellow. The flowers are open and flaring with petals of orchid pink and sepals of light yellow. July-Aug. 35 in. \$4.00

SUMMER GOLD 37-135 (Nesmith 1940) A deep chrome flower with recurved sepals slightly lighter than the crimped and twisting petals. The halo of ochraceous orange is an added joy. Long season of bloom with second bloom in September. July-Aug.-Sept. 39 in. \$4.00

SWEETBRIAR (Nesmith 1938) Lustrous flower, larger in size and much better formed and branched than Fulva rosea. The fresh pink petals and sepals are well reflexed showing a delicate yellow cup. The perfection of form of the flowers lends added charm to this lovely hemerocallis. 40 in. \$2.50

TALLY-HO 43-52 (Nesmith 1949) Bright and glowing as a huntsmans' coat, this vermilion red is very brilliant in the garden. The recurving flowers are medium in size with the edges of petals and sepals lightly fluted, and a deeper flush of red above the yellow throat. July-Aug. 39 in. \$6.00

TA MING 45-35 (Nesmith 1948) Rarely does one see a hemerocallis with more perfect form and finish. The full orange-buff flowers (deep Ta Ming in the color chart) have evenly fluted edges on both petals and sepals, and with such heavy substance that the blooms stay firm and fresh throughout the day even in hottest weather. The exterior of the buds is unique and very attractive with green tips in contrast to the brilliant orange. July-Aug. 35 in. \$4.50

TAPERLIGHT 40-439 (Nesmith 1947) Cream in color, this floriferous hemerocallis is especially good for the front of the border. The flowers are large, and very well formed with lush green foliage coming up above the lowest flowers. July-Aug. 36 in. \$2.00

TARA (Nesmith 1940) Recurring rose red flowers of fine form; a free bloomer. July. 38 in. \$2.00

TARUGA (Stout 1943) Charming and delightful is this pale yellow with wide open flowers abundantly produced on tall well branched scapes. The petals are twisted at the tips as in Wau-Bun. July. 40 in. \$2.00

TEJAS (Russell 1945) Brilliant red with orange throat. The flowers are recurving with medium wide petals. H. M., T. H. S. 1950. 38 in. \$1.00

THE SULTAN 39-185 (Nesmith 1944) Very dark red with a gold throat. The color in Ridgway is burnt lake, but the flat finish in the color chart gives no idea of the depth of color and velvety finish of this deep red. A self with broad compact petals and sepals. July-Aug. 36 in. \$4.00

THUNDERHEAD 47-1 (Nesmith 1948) As the name implies, this is a very dark hemerocallis. A self with full open flowers of velvety red, flushed almost black, with very little deep yellow at the center of the bloom. In spite of the depth of color there is a lustrous sheen that makes it stand out in the garden. July-Aug. 40 in. \$4.00

TIGER EYE (Johnson 1949) A very lovely deep chrome yellow with a brilliant red eye zone. Heavy substandard flowers, good branching. July-Aug. 36 in. \$3.00

TOKAY 40-364 (Nesmith 1943) Large open flower of salmon with a deeper pink zone on the petals. The petals and sepals are medium in width and the blooms give the effect of flaring lilies. The stalks are widely branched. A hemerocallis that has great garden value for its late blooming season. Aug.-Sept. 50 in. \$2.50

TRACERY 39-70 (Nesmith 1944) A very full broad petaled flower of pale Chalcedony yellow with a delicate lace like tracery of salmon buff in the center of the open cup shaped bloom. Lovely and delicate in color, but with exceptionally firm substance, and sturdy well branched stalks, this hemerocallis always attracts visitors. Aug. 40 in. \$2.50

TWILIGHT (Nesmith 1945) The largest flowered evening bloomer. A pale cream with full open flowers well spaced on tall sturdy stalks. Opens in late afternoon. Lovely for evening in the house. Always attracts attention in the garden. Withdrawn to increase stock, I can now offer it again in the catalogue. Aug. 40 in. \$4.00

TWILIGHT TRYST 46-14 (Nesmith 1949) Those that like evening blooming hemerocallis will enjoy this light Forsythia yellow. A self except for a narrow line or halo of Morocco red on the petals, but not on the sepals giving a triangular effect at the heart of the bloom. Both petals and sepals have a delightful ruffling at the edges. Tall with very heavy substandard blooms opening about five P.M. and remaining in good condition for 24 hours. July-Aug. 46 in. \$4.50

VIKING (Stout 1946) Strong and sturdy this rich orange-red has great garden value. The flowers are firmly finished with a slightly deeper halo just above the cool yellow throat. Evergreen. July-Aug. 40 in. \$2.50

WOLOF (Stout 1937) A large flower of dark velvety maroon with a clear orange throat and a light yellow line on the mid-rib of the petals. July. 50 in. \$2.00

WOOD NYMPH 47-16 (Nesmith 1949) There seems to be a great demand for low growing hemerocallis that are suitable for the rock garden or flower arrangement, and this one is most adaptable to such purposes. The medium sized lily-like blooms of deep old burgundy have a darker velvety flush on both sepals and petals, which extends far down into the throat of the flower. The color holds well in hot sun. Good branching. Aug. 30 in. \$3.50

HEMEROCALLIS

Well Known Varieties—Especially Priced
\$.75 each—10 for \$6.50

AUTUMN RED—Very fine red.
BLACK EMPEROR—Tall dark red.
BOUTONNIERE—Rose and yellow, late.
CHENGTU—Late bright red.
CROWN OF GOLD—Rich orange.
DRESDEN CHINA—Rose and yellow bicolor.

FANTASIA—Sienna and yellow.
FULVA MACULATA—Large red-bronze.
GOLDEN SCEPTRE—Fine orange yellow.
MABEL HIBBERSON—Coppery red rose.
MIDDENDORFII—Early orange.
MRS. A. H. AUSTIN—Large fine yellow.

OPHIR—Large clear yellow.
PAISLEY—Fine reddish mahogany.
SALMON ROSE—Lovely rose salmon.
SATURN—Orange red, lighter edge.
ZOUAVE—Red bicolor.

HOSTAS

Collection for \$7.00

ERROMENA
PLANTAGINEA
FORTUNEI
LANCIFOLIA var. fortis
CAERULEA
FORTUNEI var. marginato alba

SIBERIAN IRIS

Collection for \$7.50

HELEN ASTOR
TYCOON
GATINEAU
SNOWCREST
CAESAR'S BROTHER
COOL SPRING

ORIENTAL POPPIES

Collection for \$9.00

SHIRLEY
SEASHELL
TANAGER
ENCHANTRESS
ALICE LOUISE BRAUNLIN
HELEN ELIZABETH

The Hundred Hemerocallis Favorites of 1950

As determined by "The Third Official Popularity Poll of the Hemerocallis Society

Rank	Variety	Originator	Rank	Variety	Originator
1	PAINTED LADY	Russell	51	CANARI	Nesmith
2	POTENTATE	Nesmith	52	RAJAH	Stout
3	HESPERUS	Sass, H. P.	53	FLANDERS	Lester
4	ROYAL RUBY	Nesmith	54	SKYLARK	Russell
5	DAUNTLESS	Stout	55	PORT	Stout
6	ORANGE BEAUTY	Sass, H. P.	56	EARLIANNA	Betscher
7	GEORGIA	Stout	57	BOUNTIFUL	Cook, P.
8	CABALLERO	Stout	58	MINNIE	Hayward
9	DOMINION	Stout	59	ROSALIND	Species
10	REVOLUTE	Sass, H. P.	60	WHEELER HALO	Wheeler
11	MRS. HUGH JOHNSON	Russell	61	AFTERGLOW	Stout
12	PINK CHARM	Nesmith	62	CHLOE	Nesmith
13	PERSIAN PRINCESS	Nesmith	63	VESPERS	Nesmith
14	HONEY REDHEAD	Nesmith	64	MIDWEST MAJESTY	Sass, H. P.
15	MISSION BELLS	Hall, D. F.	65	MONGAL	Norton
16	VALIANT	Cook, P.	66	BRACKEL	Wheeler
17	BOLD COURTIER	Nesmith	67	AMHERST	Wheeler
18	RUBY SUPREME	Wheeler	68	LINDA	Stout
19	SU-LIN	Nesmith	69	GRETCHEN	Sass, H. P.
20	COLONIAL DAME	Milliken	70	KNIGHTHOOD	Schroeder
21	SWEETBRIAR	Nesmith	71	CATHEDRAL TOWERS	Milliken
22	PATRICIA	Stout	72	QUEEN ESTHER	Sass, H. P.
23	NARANJA	Wheeler	73	RED BIRD	Stout
24	BARONET	Stout	74	DOROTHY McDADE	Sass
25	MOROCCO RED	Nesmith	75	MARTHA WASHINGTON	Wheeler
26	GARNET ROBE	Milliken	76	BICOLOR	Stout
27	ANNIS V. RUSSELL	Russell	77	ROYALTY	Nesmith
28	PRIMA DONNA	Taylor	78	QUEEN OF GONZALES	Russell
29	PURPLE WATERS	Russell	79	AUGUST ORANGE	Stout
30	BLACK PRINCE	Russell	80	DUNCAN	Wheeler
31	EASTER MORN	Wheeler	81	DOROTHEA	Lester
32	JEAN	McDade	82	COPPER COLONEL	Sass Bros.
33	KANAPAHA	Watkins	83	BLANCHE HOOKER	Stout
34	NORTH STAR	Hall, D. F.	84	BAGGETTE	Hayward
35	TEJAS	Russell	85	FLAMBOYANT	Douglas
36	GAY TROUBADOUR	Nesmith	86	PURPLE FINCH	Nesmith
37	MAID MARIAN	Lester	87	COMET	Russell
38	WINDSOR TAN	Nesmith	88	MIDWEST STAR	Sass, H. P.
39	AUTUMN RED	Nesmith	89	WEKIWA	Traub
40	WAR PATH	Russell	90	HIGH NOON	Milliken
41	MRS. B. F. BONNER	Russell	91	THE DIRECTOR	Russell
42	BLACK FACON	Nesmith	92	GEORGE KELSO	Traub
43	MATADOR	Nesmith	93	ZOUAVE	Stout
44	SACHEM	Stout	94	DEVON CREAM	Nesmith
45	DUCHESS OF WINDSOR	Traub	95	BERWYN	Traub
46	ATHLONE	Russell	96	GOLDEN WEST	Sass, H. P.
47	BERTRAND FARR	Stout	97	FASCINATION	Hall, D. F.
48	SCARLET SUNSET	Wheeler	98	ROYAL BEAUTY	Taylor
49	DAWN PLAY	Nesmith	99	HYPERION	Mead
50	ROSE GEM	Stout	100	BOUTONNIERE	Stout

American Iris Society 1950 Official Symposium

THE HUNDRED FAVORITE IRISES OF 1950

1	CHIVALRY, '44 DM	26	EXTRAVAGANZA, '46	51	THREE CHEERS, '45	76	SUZETTE, '45
2	BLUE RHYTHM, '45 DM	27	RANGER, '43	52	CLOUD CASTLE, '44	77	INDIANA NIGHT, '42
3	HELEN MCGREGOR, '46 DM	28	MOONLIGHT MADONNA, '43	53	CORDOVAN, '46	78	LYNN LANGFORD, '46
4	BLUE SHIMMER, '42	29	ROCKET, '45	54	LAKE GEORGE, '45	79	PIERRE MENARD, '48
5	MASTER CHARLES, '43	30	SYLVIA MURRAY, '44	55	ARAB CHIEF, '44	80	TEA ROSE, '44
6	LADY MOHR, '44	31	TOBACCO ROAD, '42	56	SHARKSKIN, '42	81	JASMINE, '44
7	BERKELEY GOLD, '42	32	GYPSY, '44	57	MARY VERNON, '42	82	THE CAPITOL, '44
8	SNOW FLURRY, '39	33	EASTER BONNET, '44	58	DEEP VELVET, '39	83	SNOW VELVET, '42
9	BRYCE CANYON, '44	34	CHANTILLY, '45	59	CAPTAIN WELLS, '41	84	CAROUSEL, '48
10	CASCADE SPLENDOR, '45	35	THE ADMIRAL, '41	60	PRISCILLA, '42	85	GUDRUN, '38
11	AMANDINE, '46	36	BLACK FOREST, '45	61	GRAND CANYON, '41	86	MISTY GOLD, '43
12	NEW SNOW, '46	37	ARGUS PHEASANT, '48	62	KATHERINE FAY, '45	87	ESQUIRE, '46
13	SOLID MAHOGANY, '44	38	CLOTH OF GOLD, '45	63	RED TORCH, '47	88	MELANIE, '41
14	ELMOHR, '42 DM	39	CHAMOIS, '44	64	GOLDEN RUFFLES, '45	89	FRANK ADAMS, '37
15	DREAMCASTLE, '43	40	CASA MORENA, '43	65	MINNIE COLQUITT, '41	90	WHITE WEDGEWOOD, '43
16	LADY BOSCAWEN, '46	41	LOTHARIO, '42	66	STATEN ISLAND, '48	91	HARRIET THOREAU, '44
17	DISTANCE, '46	42	SPUN GOLD, '40 DM	67	ROSE SPLENDOR, '47	92	DAYBREAK, '41
18	TIFFANJA, '42	43	GOLDEN FLEECE, '40	68	MAJENICA, '41	93	LILAC LANE, '47
19	CHERIE, '47	44	DESERT SONG, '46	69	RED VALOR, '39	94	PRETTY QUADROON, '48
20	PINK CAMEO, '46	45	SPANISH PEAKS, '47	70	AND THOU, '42	95	MELLOGLOW, '42
21	AZURE SKIES, '43	46	WINTER CARNIVAL, '41	71	FANTASY, '47	96	RAINBOW ROOM, '46
22	GARDEN GLORY, '43	47	BANDMASTER, '44	72	PINK REFLECTION, '42	97	GOLDEN RUSSET, '46
23	GOLDBEATER, '44	48	VIOLET SYMPHONY, '40	73	REMEMBRANCE, '42	98	REDWARD, '42
24	BLUE VALLEY, '47	49	SNOW CARNIVAL, '42	74	LORD DONGAN, '40	99	MING YELLOW, '38
25	MULBERRY ROSE, '41	50	RADIATION, '48	75	MEXICO, '43	100	VATICAN PURPLE, '43

Oriental Poppies

AKSARBEN Tall and very large, this lovely light pink is very distinctive with its deep base spots and fluted edges. Sturdy stalks. \$2.00

ALICE LOUISE BRAUNLIN A beautiful La France pink with medium sized flowers. The very crinkled petals and dainty purple base spots add greatly to its beauty. \$1.50

ALLUMEUSE A splendid new poppy of deep flaming pink, with strong sturdy growth and upright habit. \$2.00

BLAZONRY A dazzling poppy of rich glowing Persian-red, and most effective in the garden. My introduction \$2.00

CERISE BEAUTY Beautiful cerise-pink flowers. \$1.00

CORAL CUP A beautiful six petaled poppy of real pink coral tone; velvety rose-purple stamens; almost no basal blotch; exceedingly tall and a late bloomer. My introduction. \$2.50

DELIGHT The flowers have heavy texture, and are the purest shell pink in color with no base spots. Late \$1.50

ENCHANTRESS A Neeley hybrid of soft lilac-rose coloring; an improved Masterpiece and extremely popular; rare. \$2.00

FIELD MAR. VON DER GOLTZ When this flower first opens it is a very pale pinkish lavender, half way between Perry's Blush and Enchantress in color, rapidly changing to pure white. Much more branching than is usually found in an Oriental poppy. \$3.00

HELEN ELIZABETH Heavily crinkled petals of pale La France pink with no dark markings. Nice planted with delphiniums. \$1.50

JOYCE Cerise and old rose. \$1.00

LAVENDER LADY A new break in color in Oriental poppies. A clean lavender pink of cup shaped form with heavy substance and strong sturdy stalks. One of my own introductions of which I am very proud. Different and beautiful. \$4.00

LULU NEELEY Medium in size, but a very fine dark red. \$1.00

MAYFLOWER (Nesmith 1938). An enchanting poppy with extreme loveliness of form and color. The huge flowers open slowly and seem like crinkled rose buds. The deeply crinkled petals are pure pink. \$2.00

MRS. PERRY Lovely salmon pink. \$.75

MRS. STOBART English poppy of bright rose coloring; considered the finest poppy to date; rare and excellent. \$2.50

NEW PERFECTION Delicate sea-shell pink with feathery black stamens. The petals are so heavily fluted that it has the crisp appearance of being starched and ironed. \$1.50

PERRY'S BLUSH A poppy of rare beauty; blush-white flowers borne on tall sturdy stems; a gem. \$2.50

SEASHELL (Nesmith 1938) A very delicately colored poppy with the creamy iridescence of pink seashells. The cup-shaped blooms are of heavy wax-like substance. \$2.00

SHIRLEY (Nesmith 1938) A charming coral pink poppy of medium height and size. Dainty and pleasing. \$2.00

TANAGER A radiant deep red of extreme height and beauty. Selected as the finest red of last year by garden visitors. \$2.00

WHITE DELIGHT A lily white poppy with fan shaped petals and dark base spots. \$2.50

WUNDERKIND Large flowers of brilliant carmine-rose. A great favorite. \$4.00

One Hundred Best Iris for 1951

I have given this list great care and thought, and have observed these irises in many parts of the country as well as in my own garden. No varieties are in this list that have not been tested thoroughly in my garden.

WHITE:

- ADMIRAL NIMITZ
- LADY BOSCAWEN
- MOUNT HERMON
- NEW SNOW
- SHARKSKIN
- SNOW CARNIVAL
- VIGIL
- WHITE RUSSIA
- WHITE PARCHMENT
- BLIZZARD
- HELEN MCKENZIE

CREAM & PALE YELLOW:

- CORPORAL MARY
- AMANDINE
- DESERT SONG
- POLONADE
- LADY LOUISE
- VISION FUGITIVE
- STAR SHINE
- ON GUARD

YELLOW:

- BERKELEY GOLD
- SUMMERTIME
- GOLDBEATER
- OLA KALA
- ZANTHA
- PENN CHARTER
- GOLDEN RULE

ORANGE, TAN, BROWN:

- CHAMOIS
- ROCKET
- RUSSET WINGS

RED AND RED EFFECTS:

- COLOR SERGEANT
- DRUM MAJOR
- RED TORCH
- RED MAJESTY
- SOLID MAHOGANY
- SARAH GOODLOE
- INDIAN RED
- QUECHEE

DEEP ROSE AND PINK:

- TOURNAMENT
- MULBERRY ROSE
- FAR HILLS

LIGHT PINK & PINK EFFECT:

- COURTIER
- BARBARA LUDDY
- TWILIGHT SKY
- CHANTILLY
- CHERIE
- FANTASY
- RADIATION
- PAGAN PRINCESS
- PINK CAMEO

PREMIER PEACH SYLLABUB BEAU GAY

LIGHT BLUE & BLUE LAVENDER:

- CAHOKIA
- SEAFARER
- AZURE SKIES
- BLUE RHYTHM
- BLUE VALLEY
- CHIVALRY
- CLOUD CASTLE
- HELEN MCGREGOR
- BLUE FRILLS
- ST. REGIS
- SYLVIA MURRAY
- SYRINGA
- BAY STATE
- JANE PHILLIPS
- KEENE VALLEY

DEEP BLUE, VIOLET & MAUVE:

- BARBARA ADAMS
- PIERRE MENARD
- BLACK FOREST
- DANUBE WAVE
- ESQUIRE
- GULF STREAM
- BLUE ENSIGN

NIGHTFALL PENSIVE THE ADMIRAL

PLICATA: MINNIE COLQUITT SNOW CRYSTAL SUZETTE

AMOENA—NEGLECTA: AUCCISCO EXTRAVAGANZA WABASH GAYLORD PINNACLE

VARIEGATA: MARY VERNON OLYMPIAN

BLENDS: BRONZE BROCADE BRYCE CANYON CASCADE SPLENDOR MIOGEM CAROUSEL RAINBOW ROOM SUKEY OF SALEM CENTURION ARGUS PHEASANT RICH RAIMENT

ONCO HYBRIDS: LADY MOHR BLUE ELEGANCE MORNING BLUE

Hostas or Plantain Lilies

The Hostas are excellent for edging borders, mass planting or in front of shrubbery. If you have a shady spot under trees that seems devoid of interest, then by all means try some of these interesting plants for they are at their best grown in such a location where their large sturdy leaves seem almost tropical in growth and very decorative. The racemes of bell like flowers of lilac, blue lavender, and white rise well above the foliage.

HOSTA CABRILEA The true variety has the bluest flowers of any of the Hostas. It is the next largest in size of flower to *H. plantaginea* with very round puffed out bells of lavender blue distinctly penciled on the inner surface with deeper color. The leaves are glossy green of large size and graceful form. Use for border planting with pale yellow *Hemerocallis* in the background. July-August. 3 ft. \$1.00

HOSTA DECORATA This variety has rather small oval leaves margined white and make lovely rosettes of leaves with lavender purple blooms veined white extending at right angles from two foot stalks. Early August. \$2.00

HOSTA ERROMENA A robust plant forming clumps of dark green leaves with curved veins either side of the midrib. The pale lavender flowers of bell shaped form with violet margined anthers are carried on strong scapes well above the foliage. A rare variety. July-Aug. 3 ft. \$3.00

HOSTA FORTUNEI Often this variety is confused with *H. Sieboldiana*, but it is quite different for the leaves are smaller and less glaucous and the racemes of flowers are more open and stand well above the foliage. Aug. 2 ft. \$1.50

HOSTA FORTUNEI var. *marginato alba*. The most decorative of the variegated Hostas. The large glossy green leaves with broad irregular margins of pure white are tall and arching and sweep over to the ground in the most graceful manner. Pale lavender, almost white flowers rise well above the foliage. Exceptionally lovely planted in moist shady places. July-Aug. 3 ft. \$2.00

HOSTA FORTUNEI var. *viridis marginata*. A very attractive and unusual variety with large pointed leaves of light green with a definite broad margin of dark green. The bell shaped flowers are pinkish in color and are carried on two foot scapes. July. 2 ft. \$3.00

HOSTA LANCIFOLIA var. *fortis*. One of the narrow leaved varieties of later blooming habit than most of the Hostas. The medium lavender bells are more flaring and rise well above the waxy green foliage. Aug.-Sept. 2 ft. \$1.00

HOSTA LANCIFOLIA TARDIFLORA. A rare variety that is very late blooming. It is especially good for the warmer climates for often in New England the blooms are taken by the first frost. The leaves are slender and the flowering stalk is strong and sturdy with many wide open blooms of delicate lavender. Distinctive and charming. In the north plants should be heavily mulched after the ground is frozen. 18 in. \$5.00

HOSTA MINOR ALBA Dainty and charming this rare variety has pure white blooms well spaced on the strong but slender flowering stalks. Aug. 15 in. \$3.00

HOSTA PLANTAGINEA The largest flowered variety of the group with long tubular flowers of pure white carried well above the large light green leaves. The flowers are sweetly scented, and it is lovely planted on the border of a terrace. Late August. 2 1/2 ft. \$1.50

HOSTA SIEBOLDIANA The true variety is the most rare and handsome of the Hostas. The large, broad rounded leaves are overlaid with a heavy grey blue lustre that reveals one of the thick frost crystals found on windows after a cold wintry night. The creamy pale lavender flowers have heavy substance and are borne on short clustered scapes. Plant in shade. Too much cannot be said in praise of this silvery foliage plant. June-July. 2 ft. \$5.00

BEARDED IRIS

Collections

ONLY ONE OF A VARIETY

ALL PRICES ARE NET

11 Iris for \$33.50

All of these iris have received H.M. from the A.I.S.

10 Iris for \$12.00

All of these iris have received H.M. from the A.I.S.

Select 3

- BLIZZARD
- CORPORAL MARY
- LADY LOUISE
- ORANGE GEM
- FRANGE GEM
- SKY HANGER
- BRONZE BROCCADE
- SUMMERTIME

Select 4

- SUZETTE
- MARY ELLEN
- MIOGEM
- RED TORCH
- SALMONETTE
- VIGIL

- CARUSSEL
- PAGAN PRINCESS
- RED MAJESTY
- BARBARA LUDDY
- ST. REGIS
- TOURNAMENT
- ESQUIRE

Select 4

- LAKE GEORGE
- BLUE GLOW
- CARLTON
- FRANCELLA
- SNOW CRYSTAL
- SUREY OF SALEM
- FRANCONIA

Select 3

- ALPINE GLOW
- BLACK BANNER
- DOWN EAST
- LASPER AGATE
- LADY MOHR
- SONRISA
- LOUISE BLAKE

- SHARKSKIN
- SOUSUN
- OLIA KALIA
- ELMOHR
- AZURE SKIES
- SABLE
- SEQUATCHIE

Select 3

- MOONLIGHT COCKTAIL
- PAINTED LADY
- BALTIMORE BELLE
- DAILY DOUBLE
- GAY HEART
- FRUSCAN GOLD

Select 4

- PYGMALION
- ROYAL RUBY
- TIGER EYE
- BALLET DANCER
- TWILIGHT TRYST
- BONNIE RUFFLES

- CAPRICE
- REBONAL BOY
- REBONAL LADY
- SAFFRON
- SATSUMA
- HESPERUS

Select 3

- AMBER LUSTRE
- PICKWICK
- GAY ROMNEY
- WOOD NYMPH
- THUNDERHEAD
- PURPLE DUSK

Select 3

- RUDDY RED
- ARCTIC STAR
- MOROCCO RED
- PETER PUMPKIN
- SAN JOY
- TAPERLIGHT

- COLLEEN
- FANTASIA
- GOLDEN WEST
- JUDGE ORR
- ROSA LIND
- DRESDEN CHINA

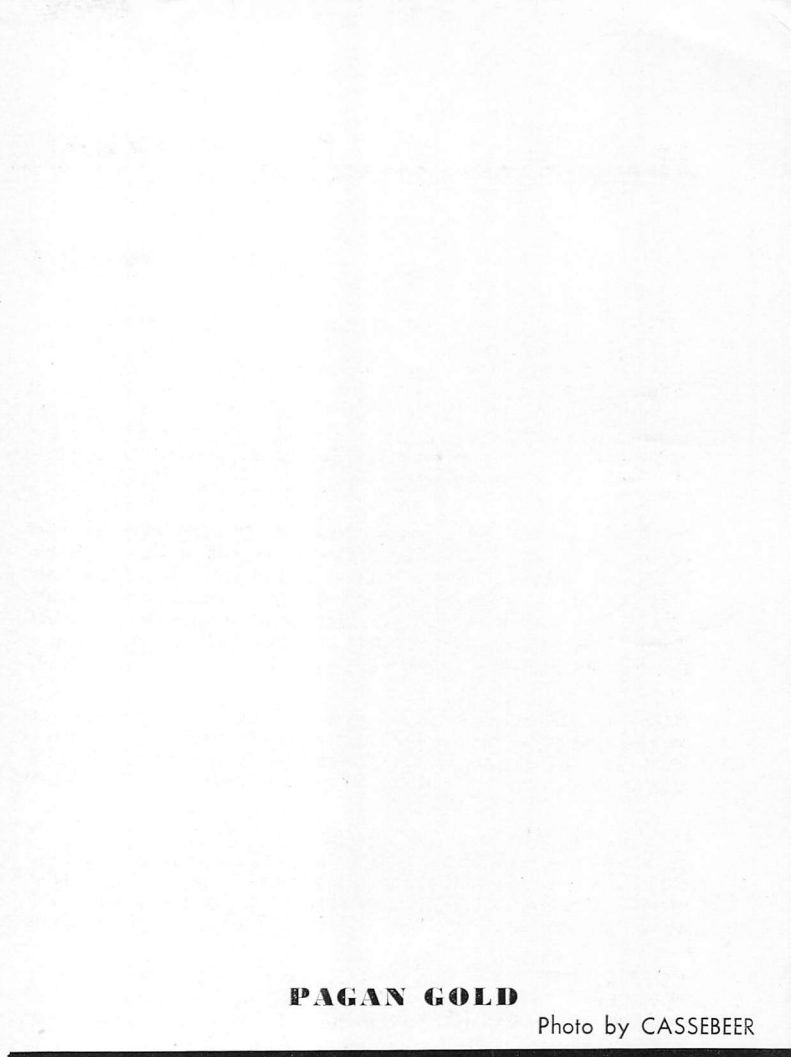
HEMEROCALLIS COLLECTION
Collection for \$15.00

HEMEROCALLIS COLLECTION
Collection for \$14.00



Photo by CALDWELL

PAGAN SUNSET



PAGAN GOLD

Photo by CASSEBEER





HELEN MCGREGOR

Winner Of The Dykes Medal In 1949

