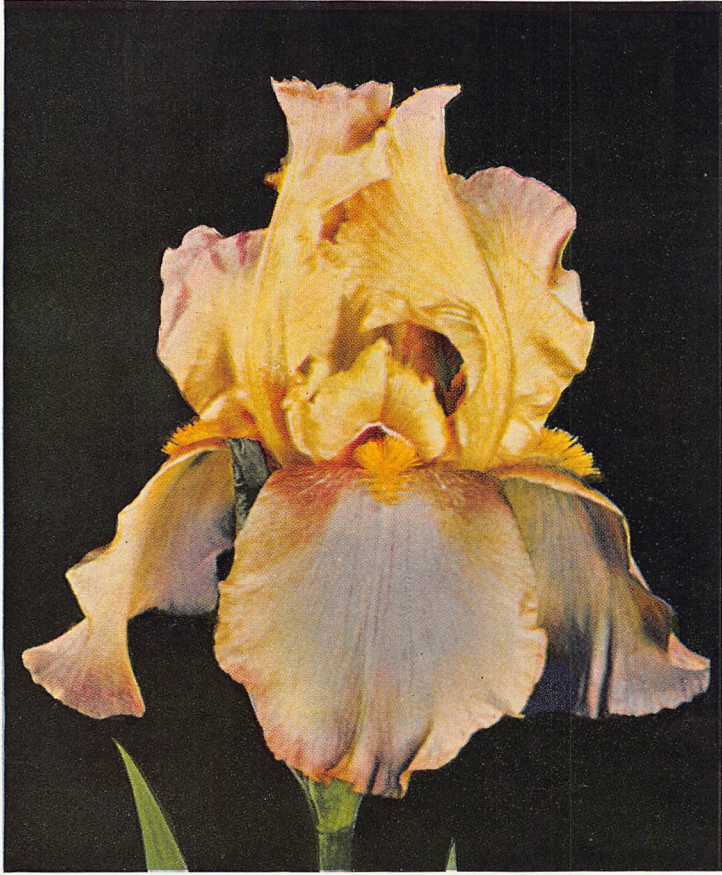


SUMMER
AND FALL
1952



RAINBOW ROOM

ARGUS PHEASANT

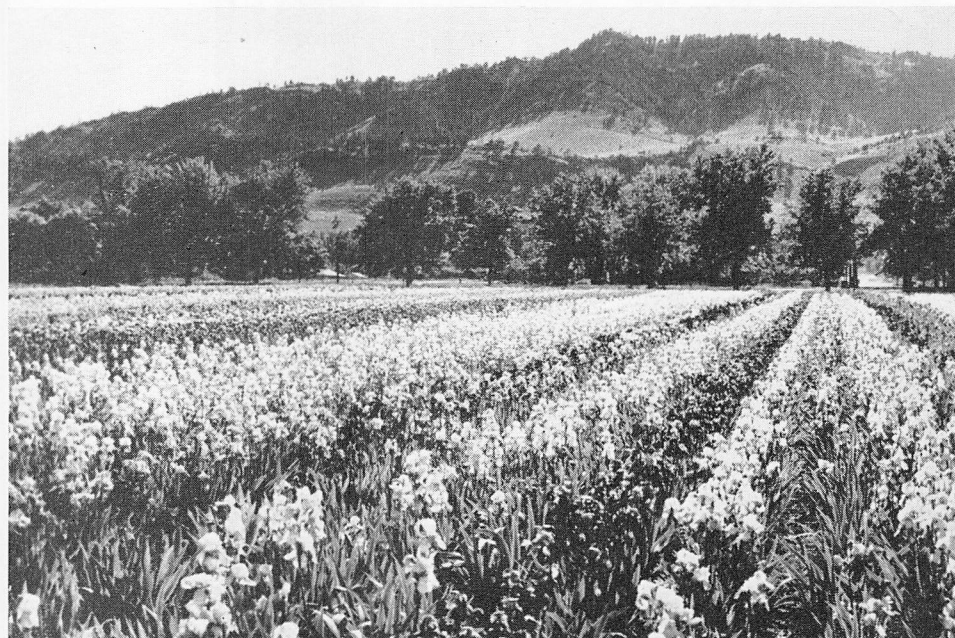
Long's
Gardens

BOULDER, COLORADO



Greetings again from the "Top of the World"

ONE OF OUR
MILE-HIGH
IRIS FIELDS



Once more we have acres of modern-day Iris growing vigorously in our fields and bursting with vitality—all available for your selection. Our mile-high climate and favorable soil conditions are "tailor-made" for growing outstandingly healthy rhizomes.

Glowing reports come in every season from customers pleased with the way "Top of the World" Iris perform in all sections of the country. Particularly gratifying are these good reports from sections where severe winter conditions demand the most hardy rhizomes.

If you have never grown any of today's modern Iris, a treat is in store for you. So much progress has been made in the past few years that today's Iris far surpasses its earlier ancestors in size, color, branching and growing habits.

We ship postage prepaid. Every item listed in this catalog is prepaid. Shipments start right after the Fourth of July, and continue through October. Iris do well when planted any time in this period. Some of our mid-western customers prefer to wait until September, thus avoiding the extremely hot, dry summer months. Unless specified otherwise, orders are shipped in same rotation as received. If you wish early shipment, please order as soon as possible.

We have no credit department, so must ask that remittance in full accompany each order. Remit by personal check, money order or postal note. Do not ask to have Iris sent C.O.D. Means red tape for us and greater cost for you.

Rhizomes are guaranteed to arrive in healthy condition and to be true to name. A culture leaflet with many helpful hints is included with each order.

Look over our collections. By grouping Iris we have in good supply we are able to offer outstanding values in our collections. There are selections to fit every purse. And don't overlook our money-saving group offers.

"Don't Delay; Send Today" for an assortment of these beautiful Iris. You'll be delighted!

PLEASE NOTE: (1) We have withdrawn our stock of peonies for propagation, so will have none available for sale this season.

(2) We will not have fall bulbs, such as tulips, hyacinths, crocus, etc., for sale this year in order to give full time to our ever-increasing iris business.

THE 100 MOST POPULAR IRIS

Each year The American Iris Society conducts a symposium to determine the 100 most popular Iris grown in this country. The results of the latest symposium are shown below. The varieties are listed in the order of their popularity. Date following the name is year of introduction; DM means it has won Dykes Medal.

- | | | | | |
|---------------------------|-------------------------|---------------------------|-----------------------------|-------------------------|
| 1. Blue Rhythm '45, DM | 13. Pink Cameo '46 | 35. Pinnacle '49 | 57. Bandmaster '44 | 79. Elsa Sass '39 |
| 2. Amandine '46 | 14. Elmohr '42, DM | 36. Katherine Fay '45 | 58. Violet Symphony '40 | 80. Treasure Island '37 |
| 3. Blue Shimmer '42 | 15. Solid Mahogany '44 | 37. Garden Glory '43 | 59. Pretty Quadroon '48 | 81. Matterhorn '38 |
| 4. Cherie '47 | 16. Great Lakes '38, DM | 38. Distance '46 | 60. Gypsy '44 | 82. Deep Velet '39 |
| 5. Helen McGregor '46, DM | 17. Lady Boscawen '46 | 39. Chamois '44 | 61. Gloriole '33 | 83. Red Valor '39 |
| 6. Lady Mohr '44 | 18. Azure Skies '43 | 40. Casa Morena '43 | 62. Lothario '42 | 84. Fair Elaine '38 |
| 7. Chivalry '44, DM | 19. Ranger '43 | 41. Cloth of Gold '45 | 63. Golden Fleece '40 | 85. Sierra Blue '32 |
| 8. Master Charles '43 | 20. Spanish Peaks '47 | 42. Fantasy '47 | 64. Mattie Gates '46 | 86. Golden Majesty '38 |
| 9. Ola Kala '43 | 21. Mulberry Rose '41 | 43. Extravaganza '46 | 65. The Red Douglas '37, DM | 87. City of Lincoln '26 |
| 10. New Snow '46 | 22. Chantilly '45 | 44. Tiffanja '42 | 66. Tobacco Road '42 | 88. Ormohr '37 |
| | 23. Minnie Colquitt '41 | 45. Pink Formal '49 | 67. Prairie Sunset '39 | 89. Indiana Night '42 |
| | 24. Blue Valley '47 | 46. Amigo '34 | 68. Winter Carnival '41 | 90. Golden Russet '46 |
| | 25. Sable '36 | 47. Grand Canyon '41 | 69. Gudrun '38 | 91. Old Parchment '39 |
| | 26. Dreamcastle '43 | 48. Wabash '46 | 70. Mexico '43 | 92. The Capitol '44 |
| | 27. Berkeley Gold '42 | 49. Lynn Langford '46 | 71. Snow Carnival '42 | 93. Shining Waters '33 |
| | 28. Argus Pheasant '48 | 50. The Admiral '41 | 72. Missouri '33 | 94. Priscilla '42 |
| | 29. Black Forest '45 | 51. Moonlight Madonna '43 | 73. Harriet Thoreau '44 | 95. Golden Treasure '36 |
| | 30. Snow Flurry '39 | 52. Arab Chief '44 | 74. Radiation '48 | 96. Tiffany '38 |
| | 31. Desert Song '46 | 53. Vatican Purple '43 | 75. Los Angeles '27 | 97. Easter Bonnet '44 |
| | 32. Rocket '45 | 54. Goldbeater '44 | 76. Spun Gold '40, DM | 98. Arctic '40 |
| | 33. Sylvia Murray '44 | 55. Three Oaks '43 | 77. Sharkskin '42 | 99. Cordovan '46 |
| | 34. Cloud Castle '44 | 56. Firecracker '43 | 78. China Maid '36 | 100. Daybreak '41 |

SYMPOSIUM SPECIAL
COLLECTION—\$20.00
One each of the first 10
Iris above
A \$30.00 value \$20.00
for only

11. Cascade Splendor '45
12. Bryce Canyon '44

LONG'S GARDENS

Long's "TOP OF THE WORLD" IRIS

TERMS USED IN DESCRIPTIONS

- Amoena:** White or tinted white standards with colored falls.
- Beard:** Narrow band of short, hairlike growth which comes from the haft one-third to one-half way down the falls.
- Bi-color:** Light or medium standards and deeper contrasting falls.
- Blend:** Combination of yellow and one or more other colors.
- Dykes Medal:** Highest award an Iris can win. Given to one outstanding Iris each year.
- Falls:** The three lower petals of the Iris.
- Plicata:** A light or white flower flushed, lined or stippled with a darker shade, particularly on the margins.
- Self:** The same shade of color throughout the whole flower.
- Standards:** The three upstanding petals.
- Style Arm:** The claw-shaped part in the center of the blossom.
- Variiegata:** Yellow or near yellow standards with deeper falls which may be either veined or solid tones of brown or purple.

For prices of more than one of a kind,
please see Group Prices on back page.

- ACE OF SPADES** (Salbach, 1941) 50c
Rich dark purple. Falls are violet-black; standards a somewhat lighter color value. Smooth finish.
- ALADDIN'S WISH** (Murawska, 1945) \$1.50
Light blue with brushings of thick cream radiating through the large blossom. Unusual novelty.
- ALBA SUPERBA** (J. Sass, 1943) \$1.50
Very large pure white flower of good substance, on tall, well branched stalks.



BRYCE CANYON

BOULDER, COLORADO



CASCADE SPLENDOR

- ALEPPO PLAIN** (J. Sass, 1943) \$1.00
Yellow plicata. Cream ground heavily dotted and sanded on edge forming a border of pansy-purple. Excellent.
- ALPINE GLOW** (Kleinsorge, 1945) \$1.50
Large flower of subdued rose tones bordering on lilac or pale violet. Slaty overcast. Golden beard.
- AMANDINE** (G. Douglas, 1946) \$3.50
Delicate cream self with a tinge of lemon. Good substance. Standards are broad and domed; falls full. Ruffled. Fine.
- ANNA WILLIAMSON** (Cook, 1946) \$2.00
Bright pink-bi-color. Standards lighter than falls. The rosy pink tone has an underlying yellow suffusion.
- ANITRA** (H. Sass, 1936) 50c
Large clear pearl-blue self. Domed standards; flaring falls.
- ARAB CHIEF** (Whiting, 1944) \$1.00
A near self of rich copper-cream of splendid texture and substance. Pure cadmium beard and metallic overlay at the haft give it radiance. Flaring falls.
- ARCTIC** (Kleinsorge, 1940) 50c
Large white and gold, with ruffled closed standards and broad, smooth falls. Golden beard.
- ARGUS PHEASANT** (De Forest, 1948) \$10.00
Smooth, bright golden Argus brown with self beard. Large flower. One of the best of the newer varieties. See cover.
- AUBURN** (Kleinsorge, 1945) \$4.00
Both the standards and falls are a coppery henna-brown with an undertone of gold. Brilliant blue patch at tip of beard.
- AURORA DAWN** (Whiting, 1948) \$2.50
Brilliant blend of rose pink and gold. Colors clear and vivid, but smoothly blended. Tall and well branched.



BLUE SHIMMER



CASA MORENA

- AZALEA** (Nesmith, 1946) **\$2.50**
Azalea pink with just a flush of ivory enveloping the whole flower. Soft pink beard.
- AZTEC GLORY** (Horton, 1941) **60c**
Glowing blend of burnished copper, red and rose.
- AZURE SKIES** (Pattison, 1943) **75c**
Pale azure-blue self; firm domed standards and flaring falls. Ruffled. White beard, wide hafts. Fine substance.
- BAGHDAD** (Whiting, 1946) **\$2.50**
Deep strong yellow self of heavy substance, overlaid with a metallic luster of burnished brass.
- BALLET DANCER** (Kleinsorge, 1949) **\$3.50**
Buffy golden apricot self of exceptionally fine form. Large closed standards. Broad almost horizontal falls waved and crimped at rim.
- BANDED BEAUTY** (H. Sass, 1948) **\$3.50**
Fascinating yellow plicata. Ground color is clear yellow with the red-brown markings a banded pattern along the edges of the falls.
- BANDMASTER** (Hall, 1944) **\$1.00**
Large, vigorous growing and free blooming powder-blue.
- BARBARA LUDDY** (Lapham, 1947) **\$3.50**
Clear pink with just a touch of ivory around the very broad tangerine beard. Rounded form and firm substance. Fine.
- BARRIMOHR** (Miller, 1944) **\$1.00**
Rich tones of mulberry and red-purple. Large.
- BERKELEY GOLD** (Salbach, 1942) **75c**
Large, clear deep yellow self. Fine form, heavy substance and smooth texture. Blooms after many yellows are gone.
- BERTHA GERSDORFF** (J. Sass, 1942) **\$1.00**
Yellow standards flushed with pink. Yellow falls heavily flushed with pinkish purple. Quite an oddity.
- BILLOWY SEA** (Norton, 1944) **75c**
Large, clear medium blue seedling of Great Lakes.
- BLACK BANNER** (Nicholls, 1947) **\$1.00**
Very deep blue purple. Late flowering. Good branching.



BLUE RHYTHM

LONG'S GARDENS

- BLACK FOREST** (Schreiner, 1945) \$1.50
Rich, silky ebony-blue-black. Blue beard, solid haft. Flowers medium size and stalks not very tall, but wonderful color.
- BLACK & GOLD** (Kleinsorge, 1943) \$1.00
Variegata. Standards deep rich chrome, almost gold. Falls black-maroon with slight reticulation of yellow at the haft.
- BLUE DELIGHT** (Grant, 1941) 50c
A cool, crisp self of wisteria blue.
- BLUE GLOW** (Nicholls, 1948) \$1.50
Dark velvety blue self. Brown haft and white beard.
- BLUE RHYTHM** (Whiting, 1945) \$1.75
Dykes Medal winner and most popular iris grown. Large flowers of near cornflower-blue with silvery overtone and a warmer cadence in the falls. Splendid form and branching. A wonderfully fine iris richly deserving of all the many honors accorded it.
- BLUE SHIMMER** (J. Sass, 1942) \$1.00
Blue and white plicata, heavily marked and dotted with soft bluish violet. Large blooms. Tall. Well branched.
- BLUE VALLEY** (K. Smith, 1947) \$5.00
Large medium blue self with flaring falls. Wide hafts. Ruffled. Excellent substance. Distinctive form.
- BLUE ZENITH** (Whiting, 1942) 50c
Large, clear sky-blue self. Tall and well branched.
- BOLD COURTIER** (Whiting, 1949) \$2.50
Glowing blend of deep rose and copper. Petals of good substance and heavily crimped at edges. Late bloomer.
- BRASS BAND** (Whiting, 1949) \$2.00
Orange yellow with deeper color on falls.
- BRIGHT LIGHTS** (Schreiner, 1946) \$2.00
Gayly marked plicata. In garden effect a bright waxy yellow with alabaster-white blaze on the falls. Soft tan stitching.
- BROWN MONARCH** (Covert) 50c
Large, handsome brown. Tall. Inexpensive, but nice.



CHAMOIS



CHERIE

BOULDER, COLORADO



CHIVALRY



FANTASY

- BRUNHILDE** (Salbach, 1934) 50c
Violet-blue self. Deep color. Many large blooms on each stalk.
- BRYCE CANYON** (Kleinsorge, 1944) \$1.50
Distinctive brown self. Blend of copper with brown undertones, touched with henna. Yellow-bronze beard.
- BUCKSKIN** (Kleinsorge, 1939) 50c
Buckskin-tan of good shape and substance.
- BUECHLEY GIANT** (Buechley, 1932) 50c
Large medium blue. An old-timer, but still good.
- BUFFAWN** (Andrews, 1940) 50c
Buff-fawn with tangerine beard. Falls overlaid with smoky lavender.
- BURGUNDY ROSE** (Hall, 1946) \$2.00
Unusual dark rosy amethyst color. Large ruffled flowers.
- BURMESE GOLD** (Whiting, 1945) \$1.00
Warm and glowing pink and gold. The colors are so smoothly combined over the whole flower that it seems a self.
- CADET BLUE** (Whiting, 1949) 75c
Deep medium blue self. Sister seedling of Blue Rhythm.
- CALCUTTA** (Kleinsorge, 1938) 50c
Cocoa-brown toned self with overlay of bluish veil.
- CALIFORNIA PEACH** (Salbach, 1941) 50c
Delicate peach-pink and apricot shades.
- CAMPFIRE GLOW** (Whiting, 1947) \$7.50
A glowing ruby red self, heavily overlaid with bright copper, which gives it a metallic sheen. The flowers are not large but form is wide and full. Color exceptional.
- CANYON ROAD** (Kleinsorge, 1946) \$1.50
Outstanding blend of violet copper and golden tan.
- CAPTAIN WELLS** (Cook, 1941) 50c
Glossy maroon-purple self with subdued yellow beard.
- CARLSBAD CAVERNS** (Wilson, 1946) \$1.50
Standards ruffled lemon. Falls white with pencil streaks of gold.

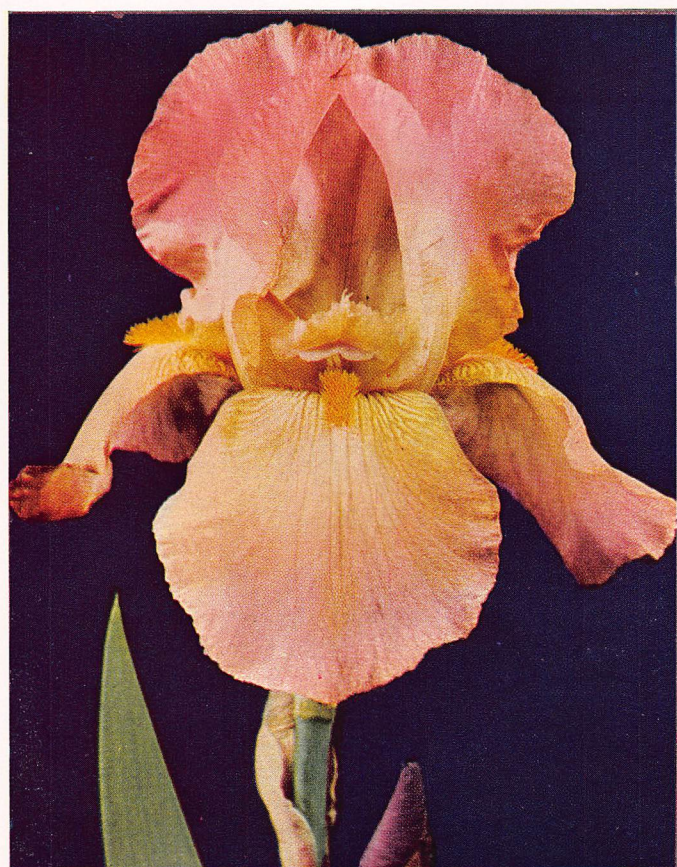
- CASA MORENA** (De Forest, 1943) \$1.50
Deep glistening brown standards and falls. Brown-orange beard. A true self. Large, lustrous blooms. Very popular.
- CASCADE SPLENDOR** (Kleinsorge, 1945) \$2.00
Large pink, tan and apricot blend with extra heavy stalks. Ruffling very pronounced for so large an iris.
- CHAMOIS** (Kleinsorge, 1946) \$2.50
Pure chamois with yellow beard tipped bronze. No veinings or markings. Both standards and falls waved at the edges.
- CHANTILLY** (Hall, 1945) \$2.00
Charming ruffled orchid-pink. Edges of both standards and falls are heavily frilled and fluted.
- CHERIE** (Hall, 1947) \$12.00
Latest Dykes Medal winner and best known of the "flamingo pinks". A large, ruffled, full bodied pink self of excellent form and substance with a deep tangerine beard.
- CHIEF POKING FIRE** (De Forest, 1942) \$1.00
Velvety brown-red bi-color. Wide standards. Rounded falls.
- CHINA MAID** (Milliken, 1936) 75c
Blend of pink, golden bronze and soft lilac. Large, well proportioned blooms of good texture on tall stems.
- CHIVALRY** (J. Wills, 1944) \$3.00
Fine medium blue with flaring falls and domed standards. Heavy substance. Dykes Medal Winner.
- CHRISTABEL** (Lapham, 1936) 50c
Brilliant glowing red. Almost a self. Smoothly finished.
- CITY OF LINCOLN** (H. Sass, 1936) 50c
Fine variegata. Clear yellow standards; fiery red falls.
- CLARIBEL** (J. Sass, 1936) 50c
A clean blue and white picata.
- CLOTH OF GOLD** (Whiting, 1945) \$1.00
Bright deep yellow self. Substance is very heavy and form pleasingly flared. One of the very finest iris.
- CLOUD CASTLE** (Graves, 1944) \$2.00
Large, majestic wisteria-blue with mauve undertone. Broad falls.
- COPPER LUSTRE** (Kirkland, 1934) 50c
Handsome blending of copper, gold, pinkish tan and lavender.



GOLDEN FLEECE

LONG'S GARDENS

- COPPER KING** (Kellogg, 1941) 50c
Soft pink flushed sparkling copper. Haft is dotted gold.
- COPPER RIVER** (De Forest, 1945) \$1.50
Glistening tan. Falls overlaid with bright new penny copper.
- CORAL MIST** (Grant, 1941) 60c
Pink standards. Deeper coral-pink falls with cinnamon flush.
- CORNFLOWER** (Whiting, 1948) \$1.50
A blue that is blue, as its name indicates. Standards well domed with nicely flaring falls. Good branching.
- CREVETTE** (Whiting, 1951) \$4.00
Tall, delicate, attractive shell pink. Tangerine beard.
- DAUNTLESS** (Connell, 1929) 50c
Dark toned red self with velvety falls. Dykes medal winner.
- DAYBREAK** (Kleinsorge, 1941) \$1.00
Golden with coppery undertone. Good form.
- DEEP VELVET** (Salbach, 1939) 50c
Rich deep red-violet shading to dark purple.
- DESERT SONG** (Fay, 1946) \$3.00
Large flaring and ruffled flowers of nice proportions. Cream self of heavy texture. Clean haft and yellow beard. Very attractive.



DAYBREAK

- DISPLAY** (Grant, 1942) \$1.00
Smooth red, shading to deep maroon at the haft. Deep and rich, it has a glowing intensity that makes it a stand-out.
- DREAMCASTLE** (Cook, 1943) \$3.00
Orchid-pink self with a white beard tinted lemon-yellow at the base. Flowers are large, of good shape and substance. Highly rated.
- DREAMLAND** (Snyder, 1945) \$1.50
Rich wine colored self. Lemon colored beard.
- DRUM MAJOR** (G. Douglas, 1947) \$4.00
Large flaring falls of oxblood red, with standards of brighter red. Heavy substance.

BOULDER, COLORADO



EXTRAVAGANZA

- EASTER BONNET** (Maxwell-Norton, 1944) \$1.00
Base color pink with half inch margin of burnished gold on both standards and falls, heavy to gold at haft. Golden beard.
- EASTER CANDLE** (Essig, 1946) \$1.50
Tall, stately white with a heavy gilding of rich yellow in throat.
- EBONY QUEEN** (Sass, 1947) \$2.00
Dark, blackish purple. Well branched, fragrant, very fine.
- ELMOHR** (Loomis, 1942) \$1.00
Rich red-mulberry. Fine form and one of the largest of all irises. Heavy substance. Dykes medal winner.
- EL MOROCCO** (Bæcherer, 1945) 75c
Opal-pink of heavy substance with broad, rounded falls.
- ELSA SASS** (H. Sass, 1939) 50c
Cool clear lemon-yellow with gleaming white near haft. Elongated bloom, frilled at the edges.
- ETUDE** (Whiting, 1949) \$2.00
Soft, creamy pink and gold with a touch of light blue in the falls. Large flowers on tall, well-branched stalks.
- EXTRAVAGANZA** (G. Douglas, 1944) \$2.50
An amoena of cream-white standards and rich velvety prune-plum falls. Very striking. One of the last to bloom.
- FAIR ELAINE** (Mitchell, 1938) 50c
Stately yellow bi-color of creamy yellow standards with golden falls and orange beard.
- FALL DAYS** (K. Smith, 1947) \$7.50
Rosy bronze standards, rose brown falls. High metallic sheen.
- FANTASY** (Hall, 1947) \$7.50
Attractive rose and orchid-toned pink. Tangerine-red beard.
- FASHION PLATE** (Maxwell) 75c
Lavender crocus color. White haft with wide edge of gold.
- FIRECRACKER** (Hall, 1943) \$2.50
Glowing dark burgundy-red plicata with yellow trim.



PATHFINDER



TECHN

ARAB CHIEF



FIRE DANCE (Fay, 1947) **\$5.00**
 A deeper, richer and taller Fire-cracker. Burgundy-red plicata. Ground color buff. Outstanding in this color class.

FLORAL WINE (Whiting, 1949) **75c**
 Red wine purple self, rich and clear.

FLORA ZENOR (J. Sass, 1942) **50c**
 Cameo-pink with lines of heavier color near haft. Tangerine beard.

FORT KNOX (Milliken, 1941) **\$1.00**
 Uniform rich yellow with smooth even finish. Broad falls.

FORTUNE (Kleinsorge, 1941) **50c**
 Solid old gold self overlaid with rust-red. Flaring falls.

FORTUNE'S FAVOR (De Forest, 1944) **\$1.50**
 Ruffled glistening tan with falls tinged with rose-lavender. Orange beard. Unusual blending and marking.

FRANK ADAMS (Lapham, 1937) **50c**
 Rosy tan standards flushed yellow and rose red falls.

FROSTED GLASS (Becherer, 1943) **50c**
 Pale yellow standards. Opalescent white falls edged yellow.

FROSTY MOON (Maxwell, 1944) **75c**
 White iris lightly tinted with lavender; golden haft and beard. Standards and falls are ruffled.

GALLANTRY (Whiting, 1945) **\$1.50**
 Heavily ruffled blue-purple self. Firm substance and good branching. Standards frilled; falls have rippled edges.

GARDEN FLAME (H. Sass, 1941) **\$1.00**
 Glowing garnet-red self with golden beard. No haft markings.

GARDEN GLORY (Whiting, 1943) **\$2.00**
 Pure deep wine-red self. Dark and rich, yet glows with a glossy sheen. Not tall, but a wonderfully pleasing smooth self.



COLOR



ROCKET

MINNIE COLQUITT

GARDEN MAGIC (Grinter, '36) 75c
Velvety deep rich self. Good form and substance.

GEN. PATTON (Kleinsorge, '47) \$4
Solid copper-brown self—one of the very best in this color class. Metallic undertone glistens in the sun.

GLAD TIDINGS (Whiting, 1947) \$2.00
Wax yellow flowers of amazingly heavy substance.

GOLDBEATER (Kleinsorge, 1944) \$1.00
Clear chrome-yellow, all yellow, without any markings or blendings of any kind. Large flowers.

GOLD SOVEREIGN (Whiting, 1949) \$7.50
Vivid orange yellow self. Not large, but of very pure, rich coloring. The deepest, most intense yellow we grow.

GOLDEN FLEECE (J. Sass, 1940) \$1.00
Beautifully ruffled yellow. Standards clear sulphur to lemon-yellow; falls are creamy white with band of deeper yellow.

GOLDEN GLOW (Glutzbeck, 1939) 50c
Brilliant clear yellow.

GOLDEN MAJESTY (Salbach, 1938) 50c
Deep golden yellow, with a deeper golden beard.

GOLDEN RUFFLES (Taylor, 1946) \$2.50
Big, solid yellow. Very fine, but possibly may be a little tender in northern states.

GOLDEN RUSSET (Hall, 1946) \$2.50
A handsome golden russet self of great size. Broad hafts.

GOLDEN SPIKE (Whiting, 1940) 50c
Deep yellow self with heavy orange beard. The flowers are large and full with wide smooth hafts.

BOULDER, COLORADO



- GOLDEN TREASURE** (Schreiner, 1936) 50c
Creamy yellow with outpouring of rich golden orange in the central portion of the flower. Bright orange beard.
- GOOD NEWS** (Kleinsorge, 1946) \$2.00
Brilliant mustard-gold self. Broad, ruffled flowers. Falls have a narrow band of copper shading near the outer edge.
- GRACE MOHR** (Jory, 1935) 75c
Pale lilac-veined manganese-violet. Large flaring blossoms.
- GRAND CANYON** (Kleinsorge, 1941) 75c
Odd blend of deep tones of plum, copper and gold. Well formed and delicately ruffled.
- GREAT LAKES** (Cousins, 1938) 75c
Clear blue self. Well rounded large blossoms on tall, well-branched stalks. Dykes medal winner.
- GREEN PASTURES** (Heller, 1947) \$2.00
Chartreuse yellow with a touch of blue at the beard. Large flowers and a tall, vigorous grower.
- GULF STREAM** (Fay, 1946) \$2.00
Smooth dark purple-blue self. Beard also blue.
- GYPSY** (Kleinsorge, 1944) \$1.00
Coppery gold standards and falls of chestnut-brown. Very fine.
- GYPSY ROSE** (Whiting, 1946) \$3.00
Rich tapestry red infused with copper and accentuated by a blaze on the falls. Flowers are large, yet sturdy and compact.
- HAPPY DAYS** (Mitchell, 1934) 50c
Giant light yellow.
- HARRIET THOREAU** (Cook, 1944) 75c
An orchid-pink self. Clear color; good texture. A fine iris.
- HARVEST MOON** (Whiting, 1944) 75c
A luscious blend of apricot, buff and orange.
- HEATH CREST** (Whiting, 1950) \$3.00
Mallow pink self with heavy tangerine beard.

- HELEN McGREGOR** (Graves, 1946) \$3.00
Clear blue, uniform in color, lighter than Great Lakes. No trace of lavender. Almost white beard. Flaring and daintily ruffled large flowers, well spaced on stems. Dykes medal winner.
- HIWASSE** (Becherer, 1946) 75c
Large, light lilac-pink bi-color. Well branched and sturdy.
- HOWARD WEED** (Kleinsorge, 1946) \$2.00
Light red-brown self with overall metallic luster. Heavy golden beard and violet patch on the center of each fall.
- ICY BLUE** (Weed, 1941) 50c
Crisp, light blue self, frosted white, with orange beard.
- INDIAN HILLS** (Grant, 1935) 50c
Rich purple self with silky sheen. Good substance and form.
- INDIANA NIGHT** (Cook, 1942) \$1.50
Lustrous rich velvety purple, almost black. Very popular.
- IOWA MAID** (Whiting, 1943) 75c
Standards creamy tan. Falls rose red. Clean and bright.
- IVORY CHARM** (Whiting, 1947) 75c
Charming ivory tone with bright golden throat.
- IVORY PRINCESS** (Whiting, 1950) \$6.00
Tall and stately flower on a beautifully branched stalk. Pure cream or warm ivory color with no markings at the haft.
- JAKE** (J. Sass, 1943) 75c
A glistening white of heavy substance on tall, well branched stems. One of the most popular whites.
- JASPER AGATE** (Williams, 1943) \$1.00
Glowing red-gold-copper self with underlying copper-pink tone.
- JULIET** (Kleinsorge, 1946) \$2.00
Flame-copper with salmon shadings. One of the best blends.
- KATHERINE FAY** (Fay, 1945) \$1.00
Large, pure white. Broad wavy petals. Excellent substance.



HELEN McGREGOR



MEXICO

LONG'S GARDENS

- LADY BOSCAWEN** (Graves, 1946) **\$2.50**
Very large clear white self with broad, fluted standards and flaring falls ruffled at the edges. Substance strong and firm.
- LADY LOUISE** (Graves, 1947) **\$5.50**
Large, broad ruffled standards of colonial buff. Falls are iridescent white with clear fluted border of colonial buff.
- LADY MOHR** (Salbach, 1944) **\$1.00**
Standards are clear oyster-shell white and the falls are a frosted chartreuse yellow with prominent veining. Unusual.
- LADY MOON** (Whiting, 1950) **\$4.00**
A cold white self with a white beard. Large, well-formed flowers.
- LAKE HURON** (J. Sass, 1942) **50c**
Rich medium toned blue self with golden yellow beard.
- LAKE SHANNON** (De Forest, 1945) **\$2.00**
Medium blue self with wide fluted standards and falls. Blue beard tipped orange inside the flower. Very strong grower.
- LANCASTER** (Cook, 1940) **50c**
A copper-old-rose blend in an excellently shaped flower. Ruffled.
- LAVENDER AND GOLD LACE** (Whiting, 1946) **\$1.00**
Standards are golden yellow flushed with lavender and edged with a crimped finish. Lavender falls with a distinct frill of gold so crimped it looks like a lace edging.
- LIGHTHOUSE** (Salbach, 1936) **50c**
Standards are old rose; falls a shade of coppery red. Large.
- LIGHTS ON** (Lapham, 1946) **\$3.00**
Pure, smoothly finished red. Medium height. Unveined hafts, velvety falls and vivid color.
- LILAC LANE** (Whiting, 1947) **\$7.00**
Pink toned lilac self of delicate coloring and very heavy substance.



NEW SNOW



LADY MOHR

BOULDER, COLORADO

- LODESTONE** (Whiting, 1950) **\$2.50**
Deep chrome yellow, somewhat deeper on falls.
- LOS ANGELES** (Mohr-Mitchell, 1927) **50c**
White with a satin sheen. Feathered with blue at the haft and at the base of the standards. Soft yellow-gold beard.
- LOUVOIS** (Cayeux, 1936) **50c**
Rich bi-color. Tan-brown standards; darker velvet brown falls.
- LYNN LANGFORD** (Hall, 1946) **\$3.00**
Orchid-pink in a deep tint, with golden yellow center.
- MAGIC WAND** (Kleinsorge, 1946) **\$1.00**
Deep golden-tan self. Falls suffused with lavender, the beard gold and brown; brown veining at the haft.
- MANDALAY** (Hall, 1943) **50c**
Smooth blend of rose and orange. Blooms quite late.
- MANYUSYA** (J. Sass, 1944) **75c**
Ruffled and frilled orchid-pink. One of the most pleasing in this color class. A favorite with all who see it.
- MAPLE FLAME** (Whiting, 1950) **\$6.00**
Standards rich gold, lightly flushed cardinal red. Falls smoothly overlaid cardinal except at the haft.
- MAPLE SUGAR** (Whiting, 1948) **\$2.00**
Smooth, creamy tan self, as luscious as maple sugar.
- MARATHON** (Whiting, 1948) **\$2.50**
Rich, smooth blending of apricot, buff and rufous orange.
- MAROON DAMASK** (Kleinsorge, 1946) **\$1.00**
Tall, dark maroon self. Beard and haft of gold. Late bloomer.
- MARQUITA** (Cayeux, 1931) **50c**
Amoena type in cream and watermelon-rose. Falls are veined with maroon. Petals are stiff and round.
- MASTER CHARLES** (Williamson, 1943) **\$1.00**
Glowing mulberry-purple self. Brown tones at haft.
- MATTERHORN** (J. Sass, 1938) **50c**
Pure glistening white, even the beard. Gracefully waved standards and delicately ruffled semi-flaring falls.

- MATULA** (H. Sass, 1939) 50c
Apricot standards flushed pink in center. Falls red edged buff.
- MELANIE** (Hill, 1941) 50c
Large lavender-pink. Exceptionally vigorous grower and bloomer.
- MELLOWGLOW** (Whiting, 1942) \$2.00
Deep peach or apricot with a flush of pink. Standards are wide and arched; falls rounded and smoothly colored at the haft.
- MELODIST** (De Forest, 1946) \$2.50
Henna colored blend on gold ground. Salmon and rose tones blended with golden brown. Large flowers.
- MEXIA** (Whiting-Crow, 1947) 75c
Brilliant copper rose blend. Sister seedling of Tea Rose.
- MEXICO** (Klensorge, 1943) \$1.50
Blended bi-color of buff golden standards and broad plushlike falls of glowing red-brown, bordered buff.
- MIDCONTINENT** (Whiting, 1952) \$15.00
A rich, golden brown, near self of warm and glowing color. Has an extremely long season of bloom.
- MING YELLOW** (Glutzbeck, 1938) 75c
Rich clear yellow without veining. Bright yellow beard.
- MINNIE COLQUITT** (H. Sass, 1942) \$1.00
Massive white plicata, slightly ruffled, with combed standards and broad flaring falls. Petals have a wide edging of purple.
- MISSOURI** (Grinter, 1933) 50c
Clear, rich shade of medium blue. Heavy enameled texture.
- MONADNOCK** (Salbach, 1937) 50c
Large rose-red self, bright, with golden beard.
- MOONLIGHT MADONNA** (J. Sass, 1943) \$1.00
Ruffled lemon-ice self. Flaring flowers. Tall.
- MOONLIT SEA** (J. Sass, 1943) 50c
Standards and falls are both white but heavily flushed with lavender-violet. Yellow haft. Over-all effect is blue.
- MOONTIDE** (McKee, 1946) \$4.00
Large well rounded flower of rich cadmium yellow. Orange beard.



PRAIRIE SUNSET

- MOROCCO ROSE** (Loomis, 1937) 60c
Pink-rose self with soft yellow glow at the heart and brownish cast about the haft.
- MOUNTAIN SKY** (Milliken, 1941) 75c
Uniform soft blue with a suffusion of yellow in the center.
- MULBERRY ROSE** (Schreiner, 1941) \$1.00
Deep radiant mulberry-rose self. Tall stemmed and well branched. Heavy bronze beard.
- NANKEEN** (Whiting, 1947) \$3.00
Clear cool Chinese yellow enlivened by soft rays of chrome yellow, smoothly overlaid over the whole flower.
- NEW HORIZON** (Fay, 1946) \$3.00
Peach-pink self with tangerine beard and pink buds. Large blooms on strong, well branched stalks.
- NEW SNOW** (Fay, 1946) \$3.00
White as the new snow. Large, ruffled flaring falls. Full bright yellow beard. No haft markings. Delightfully crisp.
- NIGHTFALL** (Hall, 1942) 75c
Velvety rich dark pansy-purple. Standards somewhat lighter.



RUSSET WINGS

- NORTHWESTERN** (Franklin Cook, 1951) \$15.00
Magnificent new royal purple—a pure self color throughout, even to haft and beard. Large flowers are beautifully arched with well domed standards and wide falls. Very strong grower.
- NYLON** (Whiting, 1940) 50c
Smooth rosy beige or light tan self. Soft even coloring.
- OLA KALA** (J. Sass, 1943) \$1.00
This Dykes Medal winner is a rich deep yellow self. Flaring lightly ruffled flowers on tall, well branched stalks.
- ORANGE FLAME** (Salbach, 1940) 50c
Standards of burnished golden orange. Falls coppery red.

LONG'S GARDENS



PINNACLE

- PINNACLE** (Stevens, 1949) **\$10.00**
A most unusual Iris from New Zealand. See picture.
- PRAIRIE SUNSET** (H. Sass, 1939) **\$1.00**
Iridescent colors of apricot, peach, pink and rose with strong gold undertones. Good substance. Dykes Medal winner.
- PREMIER PEACH** (Hall, 1946) **\$2.50**
Pinkish peach self with no haft markings.
- PRISCILLA** (Whiting, 1942) **75c**
Pure white iris of modest size and height. Clean of all markings.
- RAEJEAN** (Whiting, 1940) **50c**
Closely domed standards are deep chrome-yellow. The wide falls are lighter tones edged with deeper yellow.
- RAINBOW ROOM** (J. Sass, 1946) **\$7.00**
Handsome blend of yellow and all the rainbow colors. Metallic blotch at the end of the yellow beard. See cover.
- RANGER** (Kleinsorge, 1943) **\$1.50**
Dark but bright near-crimson red self. Bronze-orange beard on browning haft with little venation. A very fine iris.
- RAJAH BROOKE** (Norton, 1945) **\$1.00**
Variegata. Standards topaz; falls pigeon-blood red with wide topaz falls. Full golden beard.
- RED GLEAM** (Lapham, 1939) **75c**
Dark velvety red. A pleasing approach to true red.
- RED MAJESTY** (G. Douglas, 1946) **\$3.00**
Deep Eugenia rose. A self except for a yellow infusion at the center of the flower. Excellent branching.
- RED TORCH** (H. Sass, 1947) **\$1.50**
Brilliant variegata. Rich bronze-gold standards and velvet red falls. Compact form. Good substance.
- REMEMBRANCE** (Hall, 1942) **\$1.00**
Light pink, blended with yellow. Well shaped, strong stems.
- ROCKET** (Whiting, 1945) **\$3.00**
The standards are deepest chrome-yellow; the falls really orange almost to the edge. Domed standards, flaring falls and wide hafts.

- ORANGEMAN** (Waters, 1946) **\$2.50**
Large orange self with touch of deeper orange at the haft. Color is even and rich. Tall, well branched stalks.
- OREGON TRAIL** (Kleinsorge, 1943) **75c**
Smoothly blended shades of salmon, brown and gold.
- ORMACO** (Kleinsorge, 1942) **75c**
Deep violet blended with bronze and brown.
- ORMOHR** (Kleinsorge, 1937) **50c**
Pale lilac with a silvery cast, veined violet.
- PAINTED DESERT** (Milliken, 1943) **\$1.00**
Soft buff-tan with brownish suffusion at the haft and violet mid-ribs on the standards. Violet patch at the beard.
- PALE PRIMROSE** (Whiting, 1946) **\$1.00**
Cool primrose yellow with a touch of wax yellow at the haft. Distinctive form. Blooms late to help extend the season.
- PATHFINDER** (Whiting, 1948) **\$12.00**
Lovely pink blend. Wide and full blooms are of extremely heavy substance and glistening texture.
- PATRICE** (De Forest, 1945) **\$1.00**
An attractive plicata. Creamy standards are flushed rosy lavender as are the outer half of the white, flaring falls.
- PEACHBLOW** (H. Sass, 1943) **75c**
Lovely pink plicata with a light yellow flush.
- PINK CAMEO** (Fay, 1946) **\$2.50**
Pale cameo-pink self with a startling tangerine beard. A true pink without any violet influence.
- PINK CORAL** (Whiting, 1949) **\$3.50**
Warm coral pink with amber yellow center. Smoothly blended.
- PINK LACE** (J. Sass, 1947) **\$1.50**
Large, clear pink with full tangerine beard.



RANGER



TIFFANJA

- RODEO** (De Forest, 1947) \$4.00
Standards gold. Flaring falls are white edged with gold. Brown markings. Large. An improved Tiffanja.
- ROSE SPLENDOR** (Kleinsorge, 1947) \$3.00
Watermelon pink to which has been added slight copper tints.
- RUMBA ROSE** (Whiting, 1949) \$2.00
Rosy red amoena, clean and fresh. Standards pale pink lavender. Falls rich rose red.
- RUSSET WINGS** (Wills, 1946) \$3.00
Smooth combination of copper and apricot with a russet tone. Gleaming gold dusting. Crisp flaring flowers.
- SABLE** (Cook, 1938) \$1.00
Extremely dark blackish purple with violet-blue beard.
- SALLY ANN** (K. Smith, 1945) 50c
Lovely deep buff-yellow self. Fine substance.
- SAMITE** (Whiting, 1952) \$15.00
Fine new clear white. White beard is tipped yellow. Crisp flowers of heavy substance and ruffled form.
- SAN ANTONE** (Kleinsorge, 1947) \$3.00
Sand-brown self of fine form with extra broad falls.
- SHARKSKIN** (G. Douglas, 1942) 75c
Tall, white iris with almost velvet finish and firm substance. Falls flaring with glistening yellow flush in throat.
- SHARON KAY** (De Forest, 1946) \$1.50
Large, smooth self of light lilac. White beard tipped orange inside the flower. White styles shaded lilac.
- SHOWBOAT** (Whiting, 1949) 75c
Rich, red gold blend with bright blue blaze on falls.
- SILVER WINGS** (Whiting, 1949) 75c
Clean silvery white with flaring falls. Beard tipped yellow.
- SIoux CITY SUE** (Whiting-Snyder, 1947) \$1.00
Rich auburn red with a central blaze of blue. Beautifully rounded blooms with captivating and curvaceous lines.

- SNOW CARNIVAL** (Graves, 1942) \$1.00
Pure white with ruffled finish. Fluted standards are domed; flaring falls are ruffled. No markings mar white effect.
- SNOW FLURRY** (Rees, 1939) \$1.00
Standards are pure icy white, beautifully ruffled. The falls are big, broad and clear white. Just a faint cast of blue.
- SNOW VELVET** (H. Sass, 1942) 75c
Velvety textured white of heavy substance. Large flowers.
- SOLID MAHOGANY** (J. Sass, 1944) \$1.50
A very rich bronzed-red-purple self. Large flower.
- SONRISA** (De Forest, 1942) \$1.00
Coppery pink with creamy undertone and metallic finish.
- SPANISH PEAKS** (Loomis, 1947) \$4.00
Handsome true white self—the throat, the beard, the style arms all white. Large broad petaled flowers of excellent substance.



SABLE

- SPINDRIFT** (Loomis, 1941) \$1.25
Delicate sea-shell pink accentuated by fiery tangerine beard. Some venation on the falls.
- SPRING CHEER** (Whiting, 1947) 75c
Large, creamy yellow with blue and gold pattern on falls.
- SPUN GOLD** (Glutzbeck, 1940) \$1.00
Pure golden color with plushlike texture and rich golden beard.
- S Q 72** (Loomis Seedling) \$1.00
A true light pink self of good substance. Fiery tangerine beard. Not introduced but available under seedling number.
- STAINED GLASS** (Wilhelm, 1939) 50c
The rich, glowing copper-red tones remind one of looking through a stained glass window.
- SUKEY OF SALEM** (Nesmith, 1946) \$1.50
Blended self of ocher-red and rose brown flush on the upper part of the falls. Broad flowers, flaring form, heavy substance.

LONG'S GARDENS

- SULTAN'S ROBE** (Salbach, 1945) \$1.50
Rich shades of copper, gold, old rose and red. Flaring falls have overlay of gold; cream at the haft, dash of violet-blue on falls.
- SUNSET SERENADE** (J. Sass, 1943) \$1.00
Soft golden tan. Standards are apricot-buff; falls orange-tan.
- SYLVIA MURRAY** (Norton, 1944) \$1.00
Fine clear blue. Frosty firm texture. Heavy substance.
- TEA ROSE** (Whiting, 1944) \$1.00
Fresh pink tone warmed by soft amber infusion. Touch of blue at the tip of the beard.
- TECHNICOLOR** (Whiting, 1950) \$15.00
Brilliant, ruby red self. Rich, glowing color. See picture.



SOLID MAHOGANY

- THE CAPITOL** (Maxwell, 1944) \$1.00
Lustrous white with heavy orange beard and haft.
- THE RED DOUGLAS** (J. Sass, 1937) 75c
Smoothly finished rosy wine-red, solid at the haft, with a brownish cast near the center. Deep orange beard. Dykes winner.
- THE SENTINEL** (Hall, 1942) 50c
Glowing orange-copper of great garden value.
- THREE CHEERS** (Cook, 1945) \$1.50
Brilliant blue bi-color. Standards white and blue-violet. Falls dark violet to mulberry-purple with lighter border.
- THREE OAKS** (Whiting, 1945) \$1.50
A sister seedling of Tea Rose but larger, darker and more heavily infused with copper. Blue blaze on the falls. Very nice.
- TIFFANJA** (De Forest, 1942) 75c
Smooth, clean-cut, lightly marked plicata. Standards are colonial buff; falls flaring and frosted white, edged buff.

BOULDER, COLORADO

- TIP TOP** (Hall, 1947) \$2.00
Very similar to Minnie Colquitt, but lower. Good for border.
- TOBACCO ROAD** (Kleinsorge, 1942) \$2.00
Big, clear golden tobacco-brown self. Horizontal falls.
- TREVA** (De Forest, 1945) \$2.00
Golden apricot self, of large size and smooth, spready form.
- TUDOR ROSE** (Whiting, 1950) 75c
Smooth blend of Tourmaline pink.
- VATICAN PURPLE** (Whiting, 1943) \$1.50
Very rich blue-purple self. Well rounded flowers of very good substance with attractive, crisply flaring shape. Glossy finish.
- VEISHEA** (Whiting, 1943) 75c
A near self of gold with a bright blue spotlight on the falls.
- VISION OF MIRZA** (De Forest, 1944) \$1.00
Large marble plicata of rose-brown on cream ground.
- WABASH** (Williamson, 1936) 50c
Outstanding Amoena. White standards, deep violet falls with definite white margin. Dykes Medal winner.
- WILD HONEY** (Whiting, 1946) \$1.00
Soft golden tan self. Deeper gold at the haft.
- WORTHINGTON** (Cook, 1943) \$1.00
Harmonious two toned rosy-red of beautiful form and size.
- ZEBRA** 50c
Medium blue flower. Striped leaves make this a decorative plant all through the summer months.



WABASH

For prices of more than one of a kind
please see Group Prices on back page.

From

LONG'S GARDENS

Boulder, Colorado

Sec. 34.66, P. L. & R.

PAID

U. S. POSTAGE
Permit No. 1
Boulder, Colorado

Return Postage Guaranteed

LONG'S "Top of the World" IRIS COLLECTIONS

Introductory Collection

Beginner's Best Bet
\$4.00

(One of each variety listed)

Anitra	Golden Spike
Blue Zenith	Grand Canyon
Brown Monarch	Jake
Copper Pink	Manyusya
Flora Zenor	The Red Douglas

Favorite Five Collection

\$5.00

(All Dykes Medal Winners)

Blue Rhythm	O'la Kala
Helen McGregor	Prairie Sunset
	The Red Douglas

Gold Rush Collection

\$5.25

(One of each variety listed)

Arctic	Burmese Gold
Berkeley Gold	Golden Majesty
Cloth of Gold	Golden Spike
Elsa Sass	O'la Kala
Golden Fleece	Spun Gold

Super Six Collection

\$6.00

Your choice of six rhizomes from the following (please be sure to list varieties desired):

Aladdins Wish	Red Torch
Bryce Canyon	Sharon Kay
Carlsbad Caverns	Solid Mahogany
Easter Candle	Sultan's Robe
Fortune's Favor	Three Oaks
Ranger	Vatican Purple

Symposium Special Collection . . . \$20.00

(See page 2)

Blue Rhythm	Lady Mohr
Amandine	Chivalry
Blue Shimmer	Master Charles
Cherie	O'la Kala
Helen McGregor	New Snow

NOTE

All prices in this catalog are prepaid. You have no additional express or postage to pay.



Popularity Parade Collection . . . \$5.00

10 varieties, your choice, as indicated. (Please be sure to specify kinds desired.)

Select 3 From This Group

Blue Shimmer	Mulberry Rose
Lady Mohr	Sable
O'la Kala	Arab Chief

Select 3 From This Group

Azure Skies	Grand Canyon
Berkeley Gold	The Red Douglas
Tiffanja	Harriet Thoreau

Select 4 From This Group

Wabash	Deep Velvet
Missouri	Elsa Sass
Matterhorn	Ormohr

EXTRA SPECIAL

All 18 varieties listed above—
a \$13.50 value—for only
\$9.00

DeLuxe Collection

\$20.00

(One of each variety listed)

Auburn	Drum Major
Barbara Luddy	Ebony Queen
Cascade Splendor	Helen McGregor
Desert Song	New Snow
Dreamcastle	Melodist

Aristocrat Collection

\$50.00

(One of each variety listed)

Argus Pheasant	Gold Sovereign
Blue Valley	Ivory Princess
Campfire Glow	Maple Flame
Cherie	Rainbow Room
Fall Days	Spanish Peaks

NOTE

No peonies or fall bulbs for sale this year.
See page 2.

GROUP COLLECTIONS

You Pick Them—Alike or Assorted

GROUP "A"

Any Iris not over 50c

5 \$2.15	20 \$7.00
10 4.00	25 8.50

GROUP "B"

Any Iris not over 60c

5 \$2.50	20 \$8.00
10 4.50	25 9.50

GROUP "C"

Any Iris not over 75c

3 \$2.00	10 \$5.00
5 3.00	15 7.00

GROUP "D"

Any Iris not over \$1.00

3 \$2.50	10 \$7.00
5 4.00	15 9.60

GROUP "E"

Any Iris not over \$1.50

3 \$4.00	9 \$10.00
6 7.50	12 12.00

GROUP "F"

Any Iris not over \$2.00

3 \$5.00	7 \$11.00
5 8.00	10 15.00