

1952

IRIS CATALOG AND
HYBRIDIZERS' HANDBOOK



PINK FORMAL

TELL'S

(TELL MUHLESTEIN)

Iris Gardens

691 EAST 8TH NORTH
PROVO, UTAH



NIGHT
SPOT

(Page 19)

APRICOT
GLORY

(Page 4)



1952

TELL'S IRIS GARDENS

(Tell Muhlestein)

691 East 8th North

PROVO, UTAH

DEAR IRIS FRIENDS:

With this little booklet you will find the hopes and aspirations of thousands of iris lovers the world over. The hundreds of lovely named iris herein listed will also reveal, in part, the fulfillment of many hybridizers' dreams, and surely the advance and improvements accomplished are almost phenomenal.

Not occasionally do we hear adverse criticism of our hybridizers and often voices rise in protest against "too many introductions". These things do not worry me. It is true a goodly number of the new things introduced each year should not find "a place in the sun" for they are not distinct or superior. But who are we to say they may not, some day, prove their worth as great progenitors? I believe I have purchased and grown as many new sorts each year as almost any other grower on the face of this earth, yet not all the named things purchased find a listing in this catalog. Some varieties have not lived up to the "ballyhoo" the introducer, or hybridizer, gave them, and I do not feel justified in selling just to "make them pay for themselves". But what would an iris season be without the anticipation of some new acquisitions? We love the "old friends" and these we like to keep, but we also like to meet the new and thrill to the beauty they offer to enrich gardens and our souls. Those who complain the "loudest" of too many introductions, and "poor" introductions, are often the first to "brag" about the new things they have acquired. Part of the pleasure is this anticipation—with, very often, a rising of the blood pressure (or a complete let-down) when some of these creations bloom. But they have served their purpose: the introducer has "learned a lesson", and the hybridizer's "child" has seen the "footlights" and a greater urge to produce better is immediately resolved. There may be too many introductions, but only the fancier, and collector, will want to have them all, and only the really great will live through the years to find a heavy demand from iris lovers the world over.

We are pleased to increase our color-plates again this year. We hope, too, to improve our little catalog through the years and trust it will bring pleasure and helpful information to all lovers of iris. Since our great love is hybridizing we cannot apologize for the "check-list" appearance of these pages, so we hope there will be a degree of forbearance by those who do not hybridize.

We are especially pleased with this year's introductions and we are sure they will have wide appeal to iris lovers the world over. These are quite distinct and meritorious or we would not offer them. It pleases us to offer Mr. M. D. Naylor's second introduction, Moonlight Serenade. We like it for its serene beauty and know it will prove a boon to iris hybridizers for many lovely colors. Mr. William Miles of Canada has received wide acclaim for Vice Regal, Elizabeth of England, Vanda, and other fine varieties released, and we know his new iris, Vandbeth, will bring further glory to his name. It is an iris with a tremendous personality and QUALITY. We offer Mrs. S. D. Kerr's first introduction, Echo Valley, and find it unusual because of its breeding, its color and its twice blooming habit. But fanciers are going to like it just because of its lovely flowers for they are produced in abundance and it is a striking garden subject. Mr. Taylor is well known for a goodly number of fine iris: Golden Ruffles, Gentle Florence, Pink Matron and White Ruffles. We selected Gracious Lady as outstanding among the several guests he sent for trial, and while there are many blues it carries a superb quality and smoothness seldom achieved in one flower. It should be a great parent. Mrs. Ray Jensen of Logan, Utah, sent a lone rhizome of her first William Mohr seedling and when it bloomed I knew she had achieved what no other hybridizer had accomplished to date (so far as I know), a plicata from Wm. Mohr, and the flower is quite charming in itself. It sets seed and we look forward to its progeny. Mrs. Crosby's second introduction, "Concord Velvet", lives up to the high standards she has set for the selection of seedlings to be named. Aside from its rich coloring and size we know it will be popular as a garden subject, and a variety much sought for hybridizing rich "blacks" and purples.

Again I wish to thank each of you who ordered plants and seeds. It is our sincere desire to please and serve iris lovers everywhere. Best wishes.

Sincerely,
TELL MUHLESTEIN.

(Cover Design by Marvin G. Olson, Normandy, Mo.)

OUR CATALOG

Due to the cost of printing a catalog of this type we are making a charge of 25c to those who have not sent an order within the last three years. The charge for the catalog is deductible from your first order.

1952 INTRODUCTIONS

In listing the parents the Pod parent is listed first followed by an "x" indicating the flower was crossed with pollen of the next parent indicated. Complicated parentages are found in two or more brackets.

AZURE LAKE (Muhlestein). Early-Midseason (Azure Skies x Mirror Lake). Not just another blue for it has character and personality all its own. The color is about that of Mirror Lake. The standards beautifully domed, the falls flare horizontally, with the heaviest ruffling we have seen in a blue iris. Branching is sparse, and not wide, but as a clump it is stunning, and the individual blooms are magnificent. Height 36 inches. Azure Lake received the awards: Certificate of Commendation and Highly Commended in 1951. No. 49-10 Net\$20.00

CLARA B (Muhlestein). Midseason-Late. (Chantilly x 46-2 F: Hall's 42-10 x SQ 72.) Heavily ruffled white with lemon-gold border on standards and falls. Another iris where the ruffling adds distinction and charm. Garden visitors all wanted it. We decided to name this in honor of Clara B. Steel (sister of Fabulous Kate), one of Utah's earliest iris fanciers and one who has been an inspiration to this and other growers. Yet, we discovered we have two other friends with the same name: Clara B. Rees (the breeder of Snow Flurry) and Clara B. Fox of Iowa, so it will be an iris to recall the names of these fanciers and I hope they may be pleased when they see their namesake. Because of its blood we feel it will be useful to breed pinks as well as heavily ruffled things. No. 48-74. Net.....\$15.00

CONCORD VELVET (Luzon Crosby). Midseason. (William A. Seitchell x Sable.) Rich Concord-grape purple. A very large iris that demands attention because of its smoothly finished flowers, size and floriferousness. We think it has inherited most of the best qualities of its two splendid parents. This is the second introduction from Mrs. Crosby and one chosen with care. Concord Velvet will be a great parent with other dark iris to improve size, height and branching. Net.....\$10.00

DEEP MAROON (Muhlestein). Early-Midseason. (Rubeo x Garden Magic) x (Garden Glory). Not since Garden Glory have we seen such a smoothly finished iris, yet there is a velvety appearance of the falls. The color is a rich maroon or red-mahogany. The hafts are clean. This is a border plant for the stalks are only 28 to 30 inches. Branching is good. Fertile both ways Deep Maroon is an exciting new parent. We are anxious to see what it will do with Lapham's, Tompkins', Whiting's, and B. F. Hall's new reds. The color plate is quite a good likeness. Awarded Certificate of Commendation 1951. No. 49-18 A. Net.....\$20.00

ECHO VALLEY (Mrs. S. D. Kerr, Louisville, Ky.). Early-Midseason and Re-blooms. (Ormohr x Wabash.) We might describe this as a glorified Minnie Colquitt. It is a lovely purple-trimmed white ground plicata of striking garden appeal. We know fanciers will marvel at its pedigree. Its pollen is very fertile, and may be highly useful for amoena breeding. Its dependable re-blooming qualities make it all the more fascinating. Its shape is beautifully full with semi-flaring falls. Awarded High Commendation under the name Echo 1951. Net\$15.00

FANCY FEATHER (Muhlestein). Midseason-Late. (Rare Marble x 46-49 A: Salar x Gold Ruffles.) Striking yellow-ground red-trimmed plicata. The flowers are well formed, full in all parts. The standards are blended yellow-tan without any plicata markings on them, making the heavily red-marked falls stand out boldly. Stalks 36 inches, fairly well branched. We like the breeding and believe it will prove an exciting parent. Having Gold Ruffles blood it may throw ruffling in its seedlings. No. 48-49. Net\$10.00

GRACIOUS LADY (Carl Taylor). Early-Midseason. (Lake George x Great Lakes.) The same cross that produced Blue Valley. Gracious Lady is a large, flaring, tailored powder-blue very smoothly finished—without a vestige of any haft markings or texture veining. A.I.S. President Guy Rogers and Mrs. C. G. Whiting have praised it highly and recommended its introduction. We concur in its quality and are proud to be privileged to introduce this splendid iris for Mr. Taylor. Height 36 inches. No. 430. Net\$10.00

MASTER NEIL (Mrs. Ray Jensen, Logan, Utah). Early-Midseason. (William Mohr x Stained Glass.) We believe this to be the first William Mohr seedling to show a plicata pattern. The ground color is cream, the markings delicately, and deftly, applied in a cinnamon-brown shade. Were it not for its great novelty as a breeding achievement it would still be lovely in itself. Mrs. Jensen can well be proud to have developed such an iris. She has named it for her son, who is also an iris enthusiast. Established it is said to reach a height of forty inches, however, we have divided it the past two years for increase and its height averages about 32 inches. Clearly showing its heritage in foliage and rhizome growth; its blooms do not belie its pedigree, yet it is not highly fertile, but will set some pods. Lovers of the "Mohr" family will cherish Master Neil. Net.....\$15.00

1952 INTRODUCTIONS

MOHR GLORIOUS (Muhlestein). Midseason-Late. (Elmohr) x (Tompkins' 42-58: (The Red Douglas x Joycette) x (4-E 38: William Mohr x Musso-lini). As you can see it has a double "dose" of William Mohr blood. This is a border plant reaching 32 inches. It is not well branched, but the individual flowers are magnificent and are of the heaviest substance imaginable. One might call it a glorified Elmohr, yet the flowers are richer, heavier and wider. It will set some seed. Mohr Glorious is the best of several hundred Elmohr seedlings we have grown. It was awarded the Seedling Trophy at Salt Lake City Iris Show held by the Utah Iris Society in 1951. It also received awards of High Commendation and Certificate of Commendation 1951. No. 48-89. Net.....\$20.00

MOHR VELVET (Muhlestein). Midseason-Late. (Elmohr x D. Hall flamingo pink) x (45-41 D, sister to Salmon Shell and Ruffled Gem). Large tailored VELVETY medium yellow. It does not show its Elmohr blood, but we have found it the most fertile of all pollen parents on the Mohr family and hybrid lines. Its falls are really velvety in appearance (a difficult quality to attain in yellows) and the color is smoothly finished with no haft markings. Fertile both ways its blood will be highly valuable with hybrid lines and the Shell Pinks. Awarded Certificate of Commendation 1951. 38 inches tall. Stalks nicely branched. Fast of increase and very hardy. A good stock permits a price of\$10.00

MOONLIGHT SERENADE (M. D. Naylor). Early-Midseason. (Snow Flurry x D. Hall's 42-10.) This unbelievably beautiful iris made its debut on the seedling table at Salt Lake City in 1949, where it received the award of Certificate of Commendation and reserve Seedling award. It was shown again in 1951 (not for competition) and every visitor to the show grew covetous and inquired about it. Moonlight Serenade is a superb show specimen for its delicate coloring shows to great advantage under subdued and artificial light. It is an iris that comes once in a decade among the thousands of seedlings the hybridizers grow. Its coloring is delicate, subtle and refined. An off-white with the cleanest lemon-yellow undertones and beard. The very wide, somewhat ruffled, flowers are classically formed and are carried on tall 42-inch, heavy stalks that are so beautifully branched the flowers never appear crowded or misplaced. Having inherited the best qualities of its parents we look forward to an array of magnificent children. Moonlight Serenade is for the show table, the garden, and the hybridizing program. We cannot praise its charm too much. Added to its early laurels it was awarded for 1951 High Commendation. Net\$20.00

SPLASHES (Muhlestein). Early-Midseason. (Marx's sdlg. Wm. Mohr x Sacramento) x (Aldura). Large, wide, Mohr-type flower of violet coloring with prominent white splashes running through, or dotted over, the entire blossom. No two flowers are splashed exactly alike, and the effect is both novel and interesting. The 36-inch stalks are well branched, keeping the flowers nicely spaced. This unusual flower pleases us very much. We think those who like the "Mohr" family of plants will like Splashes. Awarded a Certificate of Commendation for 1951. No. 51-12. Net....\$15.00

STEP UP (Muhlestein). Midseason. (Madam Maurice Lassilly x Mist Glow.) We think this is a Step Up the ladder to better amoenas. It has clean white standards with light violet falls, something on the order of its parent Mist Glow, with a little more contrast and cleaner hafts. A difficult pod parent its pollen, however, is very fertile. Fast of increase. Height 36 inches. Well branched stalks display the flaring blooms to good advantage. No. 48-51 A. Net\$10.00

VANDABETH (William Miles). Midseason (Vanda x Elizabeth of England.) From the hands of the hybridizer who gave us Vice Regal, Vanda, Elizabeth of England and a host of other fine iris. Here is a flower of rare perfection—the standards conic, the flaring falls have a bit of wave or ruffle that give it an unusually lovely quality. The color is rich pale blue smoothly overlaid with heliotrope that gradually deepens at the heart of the flower, harmonizing with the deep yellow beard. Phenominal substance Vandabeth withstands the rigors of nature as few iris can. Its 36-inch spikes are fairly well branched, displaying the superb blooms to great advantage. Highly praised by every Canadian judge who saw it, as well as Robert Carney of Tenn. So we stock Miles' and our own reputation on this lovely creation. No. 45 B. Limited stock. Net.....\$20.00

WISH AGAIN (Muhlestein). Early-Midseason. (Aladdin's Wish x Cuban Carnival.) A large fancy somewhere between the two parents, with enough warmth in the ground to give its purple tones life. Considered a fancy—these are proving highly novel in the garden as well as good for hybridizing. Garden visitors have wanted it, but we have held the stock, and since it increases rapidly we are offering Wish Again at a modest price. The large blooms are carried and placed well on 40-inch well branched stalks. Net\$5.00

SPECIAL NOTICE

Charles Salzer, 505 G Street, Bakersfield, Calif., is growing a good many of my latest selections in seedlings, mostly under number, which, I am sure, he would be glad to show fanciers and judges by appointment.

TALL BEARDED IRIS FOR 1952

- ACE HIGH** (Lyell '45). M. (Calif. Gold x Happy Days.) Yellow. Light in falls. \$.75
- ADMIRAL NIMITZ** (Graves '48). M. (Pale Moonlight x Gudrun) x (Snowking). White with bright orange beard. H.M. '48. \$3.50
- ADMIRATION** (K. Smith '46) M.-L. (Aubanel x X-76) x (Chosen x Yellow Glory). Everyone admires this impressive clear yellow. H.M. '47 \$3.00
- AFAR** (Lapham '48). M. (Spindrift x Isabellina.) Orange-sherbet, tangerine beard. \$4.00
- AFTER MIDNIGHT** (Muhlestein '49). M. (Storm King x Sable.) Large, well formed, tall, dark purple. Fine grower, good parent. C.O.C. '47 \$2.00
- AGLOWING** (Horton '45). M. (Golden Hind x Golden Treasure.) Bright yellow. \$2.00
- ALADDIN'S WISH** (Murawska '45). M. (Buechley Giant x Pluie d'Or.) Unusual! Blue brushed gold \$1.50
- ALBA SUPERBA** (J. Sass '43). M.-L. (Snowking x Happy D. sdg.) Huge white. H.M. '43. . . . \$1.50
- ALDURA** (C. Larsen '43). E.-M. (Don Juan x Titan x San Francisco) x (Wasatch). Beautifully formed, heavy substance white plicata. Remarkable parent. Top quality! H.M. '47. . \$1.00
- ALICIA** (Rawlins '48). E.-M. (Great Lakes x Gloriole.) Tall, stately blue with the best qualities of its two great parents. Wonderful blood here for blues and whites. \$10.00
- ALLINE ROGERS** (Kleinsorge '50). E.-M. (Cascade Splendor x Daybreak.) Huge tan blend. H.C. 49; H.M. '51. \$7.50
- ALPINE GLOW** (Kleinsorge '45). M. (Mexico x red sdg.: Rebellion, King Tut, Purissima, Dolly Madison and E. B. Williamson.) Smooth rose-violet blend. H.M. '46. \$1.50
- ALTAMOHR*** (C. J. Paul '48). M.-L. (Wm. Mohr x Alta California.) Lovely flaring violet-orchid. Sets seed. Blood for plicatas and yellows. \$2.00
- AMANDINE** (G. Douglas '46). M.-L. (White Prince x Caroline Burr.) Wide, full cream. A.M. and President's Cup '48. \$3.50
- AMARANTH** (Whiting '42). M. (Cheerio x Ossar.) Rosy purple. Fine blood for reds and rich blends. Parent of Gypsy Rose and Campfire Glow \$.75
- AMAZON TAN** (Hill-Son). M. (Prairie Sunset x Hill sdg. of Sandalwood.) Beautifully formed, flaring, golden tan. Very limited stock. Net \$5.00
- AMBER GEM** (Salbach '46). E.-M. Huge chestnut and gold blend. H.M. '47. \$2.50
- AMIGO** (E. B. Williamson '34). M.-L. Lovely standard neglecta. A.M. '38. \$.50
- ANATOLIA*** (Craig '49). M. (Tiffany x Los Angeles) x (Capitola). Onco-patterned light red-violet to lavender. Slight signal patch at tip of beard. Very vigorous. \$5.00
- AND THOU** (Graves '42). M. (Purissima x Nene.) Large blue-white. Fine parent for whites with blue beards, and blues. H.M. '42. \$1.00
- ANGELUS** (Egelberg '37). L. (Eliz. Egelberg x Depute Nomblot.) Fine orchid-pink that closes the season. Good pod parent when it can be induced to set seed. H.M. '39. \$.50
- ANITA CATHERINE*** (S. Clarke '49). M.-L. (Purissima x Mohrson.) Large blue-white showing little of its onco blood. Will set some seed. \$2.00
- ANITRA** (H. Sass '36). M. (Purissima x Oriana.) Clear light blue classic. Fine pod parent. H.M. '37 \$.40
- ANNA WILLIAMSON** (P. Cook '46). M. (Sis. to Majenica: Sdigs. x Rameses.) Bi-colored pink blend. H.M. '46. \$2.00
- ANNE NEWHARD** (Weisner). M. Rich purple bicolor. H.M. '44. \$.50
- ANTIQUÉ CHESTNUT** (Lyell '51). M. (Burning Bronze x Garden Magic.) Wine standards, pansy brown-red falls. Impressed us very much with its rich coloring and all-around good quality \$7.50
- APEX** (Tompkins '47). M.-L. (Garden Glory x Jasper Agate.) Doing wonderful things for Tompkins in his new line of reds. Will prove of remarkable worth in breeding for reds. \$7.50
- APRICOT GLORY** (Muhlestein '51). M.-L. (46-113; Golden Eagle x Hall's 4024) x (Gay Orchid). Smoothly finished light apricot, or salmon, with deeper hafts and self beard. Apricot Glory proved one of the most exciting new parents last year. Its seedlings range in colors from white with red beards through various shades of pinks, salmons, apricots with orchid undertones, and the real break—pure oranges. It produces much richer, deeper colors than itself with quality blooms and substance. Not quite as deep in color as the picture in this catalog, but a lovely flower nevertheless. H.C. 49, H.M. '51 \$15.00
- APRICOT SUPREME** (Tompkins '51). M. ((Spring Maid x Far West) x (SQ 73 x Hall 42-05)) x (Pink Salmon). Very tall, well branched apricot-salmon of good size. We think it will be a delightful parent used with Party Dress, Pink Formal, Apricot Glory and Salmon Shell. H.C. 50, H.M. '51. \$17.50

- ARAB CHIEF** (Whiting '44). L. (Raejean x Garden Magic.) Burnt copper-orange. Fine, late, garden subject and an excellent parent. H.M. '46. **\$1.00**
- ARABIAN NIGHTS** (Whiting '49). M.-L. ((Marisha x Amitola) x (China Maid)) x (Far West x Matula). Blending of bright peach, yellow, pink and rich copper. With this blood it cannot miss as a fine parent with lines involving the Sass, Tomkins and Kleinsorge rich blends. Net. **\$4.00**
- ARGUS PHEASANT** (DeForest '48). M. (Casa Morena x Tobacco Road.) Large, brilliant golden brown. A.M. '50. Net. **\$10.00**
- ARIA** (Tompkins '48). M.-L. (Damascus x Rocket) x (Apex). Coppery toned henna. One of the parents of Manana which in turn is parent of the now famous 50-90. Aria is going to do great things in breeding reds. We recommend it highly for this purpose. Net. **\$2.50**
- ARIANE** (Cayeux '35). M. (Chaldee x Fakir.) Heavily marked, over-all patterned plicata. . . \$.50
- ASKALON*** (Jory '49). E.-M. (Grace Mohr sdlg. x Capitola.) Standards lavender, falls deeper with yellow flush. Mohr shape. **\$3.50**
- ATROUS** (Gage '43). M. (Purp. sdlg. x Modesta: Cheerio x Rosy Wings.) Black-purple with rich red undertone. **\$1.50**
- AUBURN** (Kleinsorge '45). M. (Prince of Orange x 258: Far West x Junaluska.) Auburn-red with metallic flush in falls. Rich blood for blends, oranges and reds. H.M. '46. **\$4.00**
- AUCOCISCO** (Tobie '49). M. (?) Pronounced Auco-cis-co. Lovely wisteria standards, falls deep blue purple—making it a delightful neglecta. 34 inches. Net. **\$4.00**
- AUGUSTA** (McKee '48). M. (Miobelle) x (Red Gleam x 4158). Rich blend that cannot miss being a splendid parent for reds and blends. H.M. '48. Net. **\$4.00**
- AURORA DAWN** (Whiting '48). M. (Veishea x Korea.) Rose-pink and gold. **\$1.50**
- AUTUMN TWILIGHT** (Brown '48). L. & Re-blooms. (?) Ecu standards, falls same with heavy center of lavender. 32 inches. Net. **\$3.00**
- AZTEC COPPER** (Kleinsorge '39). M. (Far West x Tan Sdlg.) Odd, wide, smoky-copper. Superb parent. Useful for many colors. H.M. '40. . \$.75
- AZTEC INDIAN** (W. Buss '49). M. (Brown Thrasher x Gypsy.) Quality bright new variegata. **\$6.50**
- AZURE SKIES** (Pattison '43). M. (Crystal Beauty x Snowking.) Delightfully ruffled light blue. A fine parent used with tall plants. A.M. '45. **\$.75**
- AZURE LAKE** (See 1952 Introductions).
- BAGHDAD** (Whiting '46). M.-L. (Garden Glory x Golden Spike.) Yellow with bronze overlay. Highly potent pollen. Should be an excellent breeder for yellows, blends and reds. **\$2.50**
- BALLERINA** (D. Hall '51). M. (46-30: 4407 x Cherie) x (Hit Parade). H.M. '51.
- BALLET DANCER** (Kleinsorge '49). E.-M. (Chamois x Cascade Splendor.) Apricot-tan. Falls flare horizontally. Regal blood! **\$5.00**
- BANDED BEAUTY** (H. Sass '48). M. (48-38: Tiffany x Siegfried) x (33-38: Rameses sdlg. x Orloff). Brown banded plicata. **\$3.50**
- BANDMASTER** (D. Hall '44). M. (Blue sdlg. x Great Lakes.) Large medium blue. H.M. '44. **\$1.00**
- BARBARA ADAMS** (Cahoon '47). E.-M. (Purissima x Dymia) x (Brunhilde). Rich blue-purple of delightful form. Grand blood for dark purples and blues. Net. **\$2.00**
- BARIA** (P. Cook). E.-E. (True Intermediate.) Distinct new class of intermediates from I. pumila. Yellow, slightly waved petals. H.M. '51. Net. **\$4.00**
- BARRIMOH*** (Wm. Miller '44). M. (Wm. Mohr x Adobe.) Large, well formed purple bi-color. Difficult parent. **\$1.50**
- BATAAN** (Kleinsorge '42). M. (233): ((Purissima x Cameliard) x (?)) x (Aztec Copper). Red, copper and rose blend. Difficult in growth here. **\$1.50**
- BAY STATE** (Corey '49). M. (Pale Moonlight x Great Lakes.) Highly praised, smoothly finished flower said to be as blue as anything introduced. H.C. '46, H.M. '49. **\$7.50**
- BELLE AMIE** (J. Ohl '49). M.-L. (Tiffany x Golden Fleece.) One of those lemon-ice colors. The name: "Beautiful friend." H.M. '50. **\$5.00**
- BELLE BRUNETTE** (Mitchell '48). M. (Orloff x Siegfried) x (6-6 x Siegfried). Very colorful new plicata. Fine parent. Net. **\$2.50**
- BELLERIVE** (C. Benson '49). E.-M. (Birchbark x Gallant Leader.) Huge, heavy substantenced cream with Gallant Leader's form. Should be a top breeder for putting size, height and form into the reds. Blood here, too, for creams, whites, purples, blues and blends. H.M. '50. **\$5.00**
- BEN BOLT** (Lothrop). L. (Esquire x 45-30: L8-40 x The Black Douglas.) Mrs. Lothrop's bid for the finest dark iris. Of commanding form, height, lasting quality and all-around excellence. Standards so dark they almost appear velvety. 40 in., well-branched stalk. Net. **\$7.50**
- BERKELEY BLUE** (Salbach '44). E.-M. (Purissima x blue sdlg.) Splendid blue, and another great child of Purissima. **\$1.00**
- BERKELEY GOLD** (Salbach '42). M. (Radiant x sdlg.: Happy Gift x Natoma.) Clean rich yellow in great demand. A.M. '46. **\$.75**
- BIG TIME** (Lapham '51). M. (Red Waves x P. Cook 2044: Redward x Copper Rose.) Very large new red, impressive for size and breeding qualities. **\$20.00**

- BILLOWY SEA** (Norton '44). M. (Great Lakes x Shining Waters.) Large blue of deeper color and different form than its sister Sylvia Murray. Should be a superb parent. \$1.00
- BIRCHBARK** (Kleinsorge '40). E.-M. (Undoubtedly Purissima blood.) Splendid white and a fine parent for whites, blues and creams. Net \$.75
- BIRD SONG** (Corey '52). M. (Sensation x Los Angeles) x (Wambliska x San Francisco). A heavily marked plicata that is striking and dainty because of its jaunty flaring form. We are pleased to list it the year of its introduction. No. 72 F. Net. \$10.00
- BLACK AND GOLD** (Kleinsorge '43). M. (Involving: Yakima, Cameliard, Burning Bronze, Purissima, Jean Cayeaux, Crown Prince.) Richly contrasting variegata. Net. \$1.00
- BLACK BANNER** (Nicholls '47). M.-L. (Smolder x The Black Douglas.) Tall dark purple. H.M. '47 \$1.00
- BLACK DIAMOND** (Schreiner '51). M. (Sister to Black Forest x Down East.) Impressive new black-purple because of its lovely form and good size. Sure to be a great breeder. Net \$15.00
- BLACK FOREST** (Schreiner '45). M. (Dymia x Ethiope Queen.) Not large or tall, but very dark—almost black. A.M. '48. \$1.50
- BLACK HAWK** (Schreiner '41). E.E. (Lutin x Black Wings.) Very dark purple bi-color. A true intermediate. Will start the tall-bearded season. 20 inches \$.75
- BLACK HILLS** (O. Fay '51). M. (Black Valor x Gulf Stream) x (Black Forest). H.M. '51. Net \$20.00
- BLACK RUBY** (J. Dolman '49). M. (Melanie Dolman: Dautless x Montour) x (S.241). Rich bired. H.M. '49. \$3.00
- BLACK SATIN** (Nesmith '51). M. (The Bishop x Sable) x (Black Forest). H.M. '51.
- BLIZZARD** (Knowlton '49). E. (Snow Flurry x Easter Morn.) Fine ruffled white that should be a top breeder for whites, creams and blues. H.M. '49. Net. \$4.50
- BLUE ANGEL WINGS** (McKee '49). M. (Snow Flurry) x ((Misty Rose x Miobelle) x (Snow Flurry)). Lovely blue-white. Net. \$4.00
- BLUE BLAZES** (Welch '50). M. (B-50: Gudrun x Easter Morn) x (Great Lakes). Lovely, tall, clean, smooth blue with quality written all over it. Superb blood for blues and whites. H.C. '49, H.M. '51. \$10.00
- BLUE CROWN** (Washington '45). M. Blue-white, not unlike And Thou. \$1.00
- BLUE DELIGHT** (Grant '41). M. (Gloriole x Shining Waters.) Blue that has captured the best qualities of its two fine parents. Net. \$1.00
- BLUE ELEGANCE*** (S. Jory '48). E.-M. (Purissima x Capitola.) Delightful, wide clean blue. Sets seed. H.M. '49. \$5.00
- BLUE ENSIGN** (Meyer 1937). M. (Magnificate x Blue Danube.) Quality mid-blue. Proving a remarkable parent for blues and rich purples. Dykes Medal, England, 1949. \$2.50
- BLUE FRILLS** (B. Stephenson '46). M. (Aline x Missouri.) Deep azure blue, with blue-tipped beard \$1.50
- BLUE GLOW** (Nicholls '45). M.-L. (West Point x Mata Hari.) Deep blue with brown "shoulders" (hafts) that give it distinction. Proving a quality parent as attested by Northwestern. H.M. '48 \$1.50
- BLUE PARAKEET** (Waters '50). M.-L. (Bandmaster x Azure Skies) Unusually blue with olive-ocher on hafts. Net. \$10.00
- BLUE RHYTHM** (Whiting '45). M. (Annabel: Blue Triumph v Aline) x (Blue Zenith). It's performance that counts. Blue Rhythm always gives a perfect display and is the most dependable first year performer we have ever grown. It should prove a splendid parent. Winner of both the President's Cup and Dykes Medal for 1950 \$1.75
- BLUE RIM** (C. Larsen '48). M. (Purissima x Alameda) x (Aldura). White plicata with full round petals heavily marked with clear blue. We think this is an outstanding plicata. Judged Queen of the Show, Salt Lake City, 1949. H.M. '49 \$5.00
- BLUE SHIMMER** (J. Sass '42). M. (H. Sass' 65-35) x (Blue Monarch x Blue Hill). Stunning blue plicata. Proving a superb parent for plicatas and blues. A.M. '44. \$1.00
- BLUE SPIRE** (Milliken '39). E.-M. (Purissima x Wistaria.) Lovely light blue. A good parent for blues and whites \$.75
- BLUE VALLEY** (K. Smith '47). M. (Lake George x Great Lakes.) Quite blue. Will, undoubtedly, prove a wonderful parent. A.M. '49. \$5.00
- BLUE ZENITH** (Whiting '42). M. (Blue Hill x Sierra Blue.) The parent of Blue Rhythm, and a fine iris in its own right. \$.50
- BLUMOHR*** (W. Marx '49). E.-M. (Wm. Mohr x Orloff.) Delightful, beautifully formed, heavy subtanced blue. Will set seed. H.M. '49. \$10.00
- BOLD COURTIER** (Whiting '49). M. (Mirabelle x Cedar Rose.) Rich brown blend. Full, ruffled flower. Can't miss as a superb parent. Net \$2.50
- BONNY** (Lapham '49). M. (SQ 71 x SQ 51.) Medium sized peppermint pink with "that" beard. An interesting parent when used with things of size. H.M. '50. Net. \$1.50
- BRIGHT SONG** (Schroeder '49). E. (Midwest Gem x Far West) x (Morocco Rose) x (China Maid x Golden Eagle). Orchid-pink with tangerine beard. H.M. '50. \$10.00



BLUMOHR

(Page 6)



BLUE RHYTHM

(Page 6)

BRYCE CANYON

(Page 7)



- BRITANIA** (Tompkins '49). M. (Apex) x (Cape Bon x Redward). Very large, long, rich red. Top quality and top blood. Should be a remarkable parent for reds or rich blends. H.M. '50. Net\$12.50
- BRONZE BROCADE** (Nesmith '48). M. (Sequatchee x Tobacco Road.) Copper, red and brown together in a warm, rich blend. H.M. '48...\$5.00
- BRONZED COPPER** (Kleinsorge '43). M. (Sister to Auburn.) Light copper flushed metallic lavender\$.50
- BROWNLAND** (Muhlestein '51). M.-L. (Casa Morena x Tobacco Road.) Ruffled tan blend with light blue flush in falls. The ruffling gives it distinction\$4.00
- BROWN STAIN** (Muhlestein '48). M. (Grand Canyon x Stained Glass.) Richer, wider Bryce Canyon type. Garden visitors like it, but not the name. We're sorry we christened this iris so, but think you may enjoy it, anyway, as a fine garden subject and parent. C.O.C. '47. \$2.00
- BROWN THRASHER** (Kirkland '41). M. (Copper Lustre x.) Light copper-tan that in some seasons is very bright, others dull. Should be a good parent with Tobacco Road, Aztec Copper, or other very wide and flaring iris. A.M. '43\$1.00
- BRUCE CANYON** (Kleinsorge '33). M.-L. (Mexico x Tobacco Road.) Copper-tan with a lot of life. Splendid parent for rich blends. Could be used in a red program. A.M. '47.....\$1.50
- BURMESE GOLD** (Whiting '45). M.-L. (Happy Days x E. B. Williamson) x (Prairie Sunset). Delectable, smooth apricot, gold and buff blend dusted with gold.....\$1.00
- BURMESE RUBY** (Muhlestein '49). M.-L. (Red Valor x Red Gleam.) A complete red self only the orange beard in contrast. Has an enamel-like finish rather than velvety. I rather think it will be a splendid parent if used with things to get away from sunburning, and breed to something with lush foliage for its foliage is sparse. H.C. '48.....\$5.00
- BUTTERCUP LANE** (D. Hall '47). E.-M. ((Rameses x Jean Cayeux) x (Salutation)) x (Golden Hind). Clear yellow with deeper orange-yellow beard. H.M. '40\$.50
- BUTTERFLY WINGS*** (White '46). E.-M. (Pink Jadu x I. Susiana) x (Theme x Sacramento). Porcelain blue (or blue-oyster shell) with falls heavily lined like a butterfly's wings. H.M. '47\$3.00
- CAHOKIA** (Faught '48). M. (4E1: Purissima x B31: Purissima x Santa Barbara) x (B31 x Santa Clara). Very light blue with greenish midrib. Superb parent for blues and whites. Net\$10.00
- CAMEROUN** (Cayeux '38). M. Lustrous rich purple. Still one of the best in its color class. Net\$1.00
- CAMPANULA** (Tompkins '48). M. (Blue Shimmer x Great Lakes.) Lovely Campanula blue. Swell blood here for blues and plicatas.....\$2.50
- CAMPFIRE GLOW** (Whiting '47). M.-L. (Amaranth x Three Oaks.) Rich as Tapestry. Deep ruby heavily overlaid with copper. Wonderful breeding for reds and blends. H.M. '47...\$7.50
- CANYON ROAD** (Kleinsorge '46). M. (Oregon Trail) x ((Old Parchment) x (Tuscany Gold x Rameses). Large tan blend with royal blood.\$1.50
- CAPE BON** (Tompkins '45). M. (Aztec Copper x Veishea.) Red with copper undertones. Back of Tompkins' new reds — recommendation enough for its use for red breeding. H.M. '45\$3.50
- CAPITOLA*** (Reinelt '40). E.-M. (Wm. Mohr x Ib-Mac.) Larger, better-formed Wm. Mohr without quite so much pattern. Pollen highly fertile and very useful to bring Onco blood, and type, into the tall bearded class. A.M. '50. Net.\$1.00
- CAPTAIN WELLS** (P. Cook '41). M.-L. (Same breeding as Action Front.) Maroon-black. Needs partial shade. Superb breeding for black and red lines. A.M. '43.....\$.50
- CAPTIVATION** (Tompkins '49). M. ((Mme. L. Aureau x Sass 119-39) x (Nassak)) x (Blue Shimmer x Mme. L. Aureau). Very large, full, beautifully marked plicata. Fascinating lines for breeding this color.....\$4.00
- CARAVAN** (Tompkins '49). M. (Mirabelle x Cape Bon.) Rich blend. Rich blood, too, for blends and reds\$4.00
- CARDINAL'S ROBE** (Lyell '50). M. (Indian Hills x Sable.) Rich as a Cardinal's robe. Sister to new introduction Purple Flash. Top blood for blacks and reds. 42 inches.....\$6.00
- CARNIVAL PARADE** (H. Sass '46). M.-L. (Two plicatas 38-36 x 44-36, undoubtedly Tiffany and Orloff blood.) Massive yellow plicata...\$1.00
- CASA MORENA** (DeForest '43). M. (Morning Splendor, Germain Pertheus, Alta Calif., Rubeo, Grace Sturtevant) x (Prairie Sunset). Lovely burnt sienna and chestnut. Blood for blends, reds and even plicatas. A.M. '46.....\$1.50
- CASCADE SPLENDOR** (Kleinsorge '45). M.-L. (Mexico x Goldbeater.) Ruffled pinkish-apricot blend. Proving a fine parent for blends, rich yellows and variegatas. A.M. '47.....\$2.00
- CELESTAR** (C. Larsen '50). M. (((Los Angeles) x (Don Juan x Titan)) x (San Francisco)) x Aldura))) x (Tiffany). White with flush of lavender-purple on one side of the falls. The buds are flushed with this same color—giving them an unusual effect. To retain the color the flowers should be picked as soon as open—otherwise the color fades away leaving a white flower. Crossed with Cool Lemonade gave some splendid, well branched, lemon-yellows of quality. H.C. '49\$7.50

- CENTURION** (Wills '50). E.-M. (Hindu Queen x Tobacco Road.) Burnished brown. H.M. '50. Net\$10.00
- CHALLENGE** (Stevens '50). E.-M. (Inspiration x Caribbean Treasure: Miss Calif. x Cedar.) Huge rose\$9.00
- CHAMOIS** (Kleinsorge '44). M. (Mexico x Tobacco Road.) Stunning light golden-tan. Chamois and Amazon Tan lead this color class. A.M. '48\$2.50
- CHANTILLY** (D. Hall '45). M.-L. (Maiden Blush x pink sdlg.) Very heavily ruffled orchid-pink blend. Produces this ruffling in many of its seedlings, giving them great vigor as well. A.M. '47\$2.00
- CHARLIE GERSDORFF** (Lapham '48). M. (Copper Rose x Red Gleam.) Strong bi-colored copper-red. Good blood for red breeding.....\$2.00
- CHAR-MAIZE** (D. Lyon '49). M. (Snow Flurry x Aztec Copper.) Rich yellow with strong undertones of chartreuse. Wide, full flower that is stunning as well as different. Will undoubtedly be a great breeding iris. H.M. '49. Net. \$10.00
- CHEEKS OF TAN** (Craig '50). M. (China Maid x Copper River.) Large mallow pink blend with hafts flushed tan.....\$6.00
- CHERIE** (D. Hall '47). E.-M. (42-07: Golden Eagle x 39-62) x (Fantasy). Flaring light pink with good form and substance. Will be a fine breeder. A.M. '49. Dykes Medal 1951.....\$12.00
- CHICORY BLUE** (G. Douglas '42). E.-M. (Shining Waters x Stella Polaris.) Good blue. Royal blood for blues, violets and whites. H.M. '42\$1.00
- CHIEF POKING FIRE** (DeForest '42) M. (Alta Calif. x Jean Cayeux) x (E. B. Williamson). Fine red. Overlooked, perhaps, as a parent for rich blends, plicatas and reds.....\$1.00
- CHINA MAID** (Milliken '36). E.-M. (Mauna Loa x Dauntless.) Pink blend with a strong and delightful perfume. Blood for red or even amoena breeding. Use with varieties heavy in substance\$.75
- CHINOOK PASS** (Norton '50). M. (Sylvia Murray x Glorile.) Frosty light blue with white-tipped beard. Fine stalk to display the quality blooms. H.M. '51\$5.00
- CHIPPEWA** (Salbach '43). M. (Orloff) x ((Seduction x Comstock) x (Alta Calif)). Lightly marked yellow plicata\$.50
- CHIVALRY** (J. Wills '44). M.-L. (Missouri x Great Lakes.) Ruffled medium blue. Its pollen used on Snow Flurry has given Prof. Mitchell some lovely things. Dykes Medal '47. Top of the Symposium 1950\$3.00
- CHI-YUN** (DeForest '47). E.-M. (Snow Flurry x Azure Skies.) Ruffled, full white. Not tall, but used with blue or white varieties with height should prove a wonderful breeder.....\$2.00
- CHOIR BOY** (Schreiner '47). L. (King Juba x Dorothy Dietz) x (Cantabile). Nicely formed amoena. Fertile\$1.50
- CHOSEN** (White '37). E.-M. (Mirasol x Purissima) x (Rubeo). Large yellow of quality. Blood for this color, creams, whites and reds.....\$.50
- CHRYSOLITE** (Milliken '41). E.-M. (Easter Morn x Lady Paramount.) Wide cream with rich orange beard. Difficult parent.....\$.75
- CIRCUS** (Marx '50). L. (Marquita x Sundipt.) Standards light lemon yellow. Falls creamy yellow with bright red veins. Striking and novel. Net\$1.50
- CITY OF LINCOLN** (H. Sass '37). M.-L. (Al-lu-we x).Still a fine variegata. A.M. '39.....\$.50
- CITY OF STRATFORD** (Miles). M. (Trader Horn x ?) Large Majenta-mulberry.....\$2.00
- CLARA B** (See Introductions).
- CLARET VELVET** (Weed '41). M. Rich claret-purple. No pollen. Difficult pod parent. \$.50
- CLEAR SAILING** (DeForest '50). M. (Tiffanja x Coritica.) Flaring clean lemon-yellow. Absolutely stunning. Will be a superb parent for this color and plicatas. H.M. '50.....\$12.00
- CLOTH OF GOLD** (Whiting '45). M. (Golden Hind x Golden Spike.) Tall, rich yellow of quality and always a good performer. A.M. '50. \$1.50
- CLOUDCAP** (DeForest '50). M. (SQ 72) x (6-44: (Salar x Sandia) x (Prairie Sunset)). Everyone is talking about this huge light pink. Superb breeder. H.M. '51. Net.....\$20.00
- CLOUD CASTLE** (Graves '44). M. (Sensation x Glorile.) Huge light lavender-blue. Superb parent for blues and whites. A.M. '49....\$2.00
- COCK PHEASANT** (Whiting '51). M.-L. (Baghdad x Garden Flame.) Rich tapestry red with tantalizing overlay of terra cotta on falls. Blood for reds! Net.....\$10.00
- COGNAC** (Whiting '51). L. (Prairie Sunset x Veishea.) Glowing amber-tan self. 40 inches tall. Splendid blood for breeding tans, browns and blends\$6.00
- COLONIAL DAME** (G. Douglas '50). M. (Billet-Doux x Great Lakes.) Slightly ruffled light blue of unusual charm and quality. Will be a fine parent. H.C. '49.....\$5.00
- COLORATURA** (DeForest '46). M. (E. B. Williamson x Prairie Sunset.) Orange-russet. Blood for rich blends, oranges and reds.....\$1.50
- COLOR CARNIVAL** (DeForest '49). E.-M. (Spin-drift) x 6-44: ((Salar x Sandia) x (Prairie Sunset)). Pink with bold dashes of purple on falls. Produces quality pink seedlings. H.M. '50.\$7.50
- COLOR SERGEANT** (H. F. Hall '49). M.-L. (R-58 x R-59.) Large, wide, ruffled red on tall 4-way branched stalks. We think it has a very good quality both as a breeder and garden subject. Limited stock. Net.....\$4.50

CONCORD VELVET (See Introductions).

CONSOLATION (Tompkins '50). M. (Blue Shimmer x Great Lakes.) Beautifully finished light blue. Very large of good substance. One of the best of this color we have seen. Net. \$7.00

COOL LEMONADE (Muhlestein '47). E.-M. (Electra x Bonanza.) Cool and refreshing as iced lemonade. A complete self, even to the beard. Starts the tall bearded season. Neither large nor tall, but so charming and clean we feel sure it will become one of your pets just as it has for us. \$2.00

COPPER BEECH (Nesmith '50). M. (Ned Le Fevre x Sukey of Salem.) Glowing henna-copper. Stunning \$4.50

COPPER GLOW (G. Douglas '45). M.-L. (Gay Troubadour) x ((Red Bonnet) x (Soldano x China Clipper)). Rich copper blend. Really startlingly bright. Superb blood for blends and reds. Fast of increase. H.M. '45. \$1.00

COPPER RIVER (DeForest '45). M. (E. B. Williamson x Fortune). Copper blend. Good breeding material for this color and reds. \$1.50

COPPER CASCADE (Kleinsorge '40). M. (Treasure Island x Far West.) Wide, rich brown. Net \$.50

CORDOVAN (Kleinsorge '46). M. (314 x Bryce Canyon.) Coppery-brown of unusual finish. Splendid parent for reds and browns. H.M. '47. Net \$1.50

CORITICA (H. Sass '42). M.-L. (50-34): ((40 x Rameses) x (Amitola)) x (Tiffany). Lovely, clean yellow plicata, sister to Ruth Pollock. Marvelous parent for plicatas and lemon-yellows \$.75

CORNFLOWER (Whiting '48). M. (Sea Blue x Great Lakes.) One of the bluest. Medium flowers on tall well branched stalks. \$1.50

CORONADO (Tompkins '45). E.-M. (Flora Campbell x Golden Spike.) Wide, early yellow. Blood for reds, rich yellows. \$.75

CORPORAL MARY (Graves '49). M. (Snow Carnival x Katherine Larmon.) Very large, full cream-lemon with light area over falls. Heavy yellow beard. Top quality. Personality plus! Net \$6.50

COURTESY (Tompkins '50). M. (Blue Shimmer x Lovely Day) x (And Thou). One of the top ranking blue-whites with a heavy blue beard.

COURTIER (D. Hall '47). E.-M. (42-10: Golden Eagle x 39-62) x (42-05: 40-34 x 39-62). Deep pink color. One of the finest parents in this color class to date. Net. \$3.50

CREAM GOLD (Muhlestein '47). M.-L. (Fort Knox x "Type Dore", a Sea Shell sdlg.) Yellow standards, white falls edged yellow. Does sometimes fleck due to W. R. Dykes blood. Proving a splendid parent. \$.75

CREAMO (Fitzpatrick '45). E.-M. (Sdlg. x Golden Madonna.) Wide cream not unlike Amandine. \$1.00

CRIMSON GLAZE (Craig '50). M. (Naranja x Rich Raiment.) Brown-red bi-color with crimson glaze on falls. White accent under beard. Quite red. Blood here for reds as well as plicatas. 40 inches tall. \$5.00

CRITERION (G. Douglas '51). M.-L. (Extravaganza x Wabash.) Sister to Gaylord, and a very easy parent. A fine new addition to the amoenas. Net \$18.50

CUBAN CARNIVAL (Sass Bros. '48). M. (Bertha Gersdorff x Moonlit Sea.) Richer Bertha Gersdorff type. Will breed unusual things from plicata lines, lemons, or Aladdin's Wish colors \$3.00

CUSTARD (Craig '50). M. (Rich Raiment x Mitchell 41-55.) Yellow plicata daintily marked with cinnamon. Really very nice. \$6.00

DAFFY (DeForest '47). M. (Adelanto x Tiffany.) Unusual, different! No two falls brushed or marked alike and it produces this quality in many of its seedlings. \$1.50

DAMASCUS (Tompkins '45). M. (Spring Prom x E. B. Williamson) x (Cedar Rose). Very similar to Rocket. Back of Tompkins' new "hot" red 50-90. Should be highly useful for orange, red, blend or yellow breeding. \$1.00

DANUBE WAVE (Schreiner '47). E.-M. (Anitra x Narain). Large, full, ruffled marine-blue. H.M. '48, A.M. '51. \$4.00

DARK MELODY (H. E. Sass '51). M. (?) Blended plicata of deep livid purple—brown beard. 36 inches tall \$10.00

DARK TOWER (Mitchell '50). M. (Snow Flurry x Chivalry.) Superb ruffled blue of Chivalry's coloring. Grand stalk with excellent branching. Will be a great parent for blues, whites—and ruffling \$10.00

DAWN OVERLAY (Muhlestein '47). M. (Came-lina x City of Lincoln.) Flaring lemon-ice brushed with cinnamon-tan. Similar to Cuban Carnival. Blood for unusual "fancy" plicatas, lemons, blends and variegatas. \$.50

DAYBREAK (Kleinsorge '41). M. (Far West) x Jean Cayeux x Far West). Dark pink blend. Produces smooth seedlings. A.M. '43. . . . \$1.00

DEB'S DELIGHT (D. Hall '46). M. (Undoubtedly 39-62 blood.) Large light pink. \$1.00

DECEMBER ROYALTY (L. Austin '51). M. and Re-blooms. Rich, smooth purple. \$12.00

DEEP BUTTERCUP* (Muhlestein '48). E.-M. (Brown Betty x Golden Eagle.) Smooth bright yellow. Buds look like wax. Weak stalks for such large blooms, and falls are a bit narrow, but interesting for breeding because of its one-fourth onco blood. H.C. '47. Net. \$2.00

- DECORATOR** (Snyder '48). M. (?) Very tall peace-pipe red\$1.25
- DEEP VELVET** (Salbach '39). M. (San Diego sdlg. x Modoc.) Rich, enameled purple. Splendid parent. Could be used to advantage with "blacks." A.M. '42\$.50
- DESERT SONG** (O. Fay '46). M. (Snow Flurry x Golden Eagle.) Large, quality cream. Should be useful for breeding this color, yellows, whites, blues and shell pinks. A.M. '49...\$3.00
- DISPLAY** (Grant '42). M. (The Red Douglas x Christabel.) Fine red and should be a good parent for this color. H.M. '42.....\$1.00
- DISTANCE** (P. Cook '46). M.-L. (Castalia x Santa Barbara) x (Great Lakes). Smooth blue effective in clumps. A.M. '49.....\$3.00
- DIVIDEND** (G. Douglas '44). L. (Sundance x Glen Ellen.) Want a fine yellow to close the season? This is it.....\$1.00
- DOLLY VARDEN** (D. Hall '50). M. (Fantasy x Courtier.) Large pink with overlay of salmon. H.M. '50\$15.00
- DOWAGER QUEEN** (Craig '50). M. ((Acropolis x Destiny) x (Tiffany x self)) x (Inspiration). Very large red purple deeper at hafts and near the yellow beard\$5.00
- DOWN EAST** (Tobie '43). M. (Castalia x Santa Barbara) x (Great Lakes). Dark purple, proving highly useful for darks and blues. H.M. '43. Net\$1.00
- DREAM ALONG** (Muhlestein '50). M.-L. (Daybreak x Three Oaks.) Very large pink blend with a lot of quality. A good parent.....\$2.00
- DREAMCASTLE** (P. Cook '43). M. (From: Geo. J. Tribolet, Dominion, Windham, Mme. Cherie, Morning Splendor, Susan Bliss x Rameses.) Extremely wide orchid, and produces this quality in its seedlings. Use varieties with good branching. A.M. '48.....\$3.00
- DREAM GIRL** (D. Hall '44). M. (40-34 x 39-62.) Clean, small pink.....\$1.00
- DREAMLAND** (Snyder '45). M. (Trojana x Pioneer) x (Ricardi x Moa). Large hollyhock red proving a fine parent for this color and yellow plicatas\$1.50
- DRUM MAJOR** (G. Douglas '47). M. (Display) x (((Francesco x Jeb Stewart) x Soldano)) x (Gallant Leader))). Bold red of royal blood...\$4.00
- DUET** (Grant '42). M.-L. (Rhapsody x ?.) Unusual and charmingly different. Standards honey beige with pink flush. Falls violet bordered color of standards. Net.....\$1.00
- DUSKY NIGHT** (Whiting '48). M. (Missouri x Mata Hari) x (Sable). Dark purple of quality showing its superb blood. Net.....\$.75
- EASTER BONNET** (Maxwell-Norton '44). M. (Moro-rocco Rose x Alastor.) Rodenite pink edged gold. H.M. '46.....\$1.00
- EASTER SUNRISE** (C. Rees). E.-M. (Snow Flurry x Happy Days.) Big creamy yellow.....\$1.25
- EBONY ECHO** (Tompkins '48). M. (Cape Bon x Casa Morena.) Accent on form. Deep carmine with black-red overlay. Wide of parts. Top blood for reds. H.M. '49.....\$10.00
- EBONY ISLE** (DeForest '49). M. (Ethiophe Queen x Storm King). Black-red of rare and unusual finish. Smooth! H.M. '50.....\$10.00
- EBONY QUEEN** (Sass Bros. '47). M. (Dark sdlg. x Sable.) Well branched, very dark black-purple. H.M. '47\$2.00
- ECHO VALLEY** (See Introductions).
- EDITH RORKE** (K. Smith '46). M. (Valentine x Florentine.) Precisely stitched blue and white plicata. H.C. '45.....\$2.00
- EDWARD OF WINDSOR** (Morris '45). M. (Sdls. from: Sacramento, Mary Geddes and Golden Hind.) Odd pink break. Useful parent for new blood and vigor.....\$4.00
- ELAN*** (White). E. (Sweet Alibi x Jocund.) One-fourth Onco blood. White.....\$.50
- ELENA CHOOSING*** (White '44). E.-M. (Answer x Jocund.) Buff blend with metallic blue in falls. Proving a splendid parent for blends. Easy parent\$1.50
- ELIGIBLE** (Snyder). M. (Dreamland x Sdlg.) Fine new dark red.....\$4.00
- ELIZABETH OF ENGLAND** (Miles '46). M. (Typhoon x Lagoon.) Exquisite light azure blue that holds its color. The parent of Miles' 1952 introduction, Vandabeth. Net.....\$5.00
- ELMOHR*** (Loomis '42). M. (Wm. Mohr x H 22.) Huge mulberry purple with all the magnitude and glamor of the largest tall bearded iris with the added charm of the full-flowered oncocyclus. Produces seed. We have seen some splendid seedlings from Elmoehr x Great Lakes and Sable. Would think the following also useful to use with it: Red Waves, Brunhilde, Deep Velvet, Char-Maize, Gulf Stream, Gypsy Rose, Three Oaks, Cape Bon, Grand Canyon, Mulberry Rose, etc. Dykes Medal '45....\$1.00
- EL PASO** (Kleinsorge '49). M. (Tobacco Road x Goldbeater.) Lively golden-brown. Rich blood! H.M. '50\$3.50
- ELSA SASS** (H. Sass '39). E.-M. (Tiffany x Orloff.) The first lemon-ice yellow. Still lovely when well grown. Splendid parent for this color and rich yellow plicatas. A.M. '41.....\$.50
- ENVOY** (DeForest '49). M. (Ethiophe Queen x Sass sdlg. 41-83.) Near black. Standards glow with red tones. Highly praised from every quarter.\$9.00
- ESQUIRE** (Lothrop '45). M. (L 8-40 x Brunhilde.) Rich medium-deep purple with texture lines. Beautiful form and branching. Parent of Ben Bolt. H.M. '47.....\$2.50

- ESTATE** (Benson '49). M. (Birchbark x Bruno.) Wide chaste white self with superb substance. For the front of the border. Blood for whites, blues, reds, blends and creams. **\$2.50**
- EVENGLow** (Clevenger '48). M. Huge lobelia violet. Its size will astound you. **\$4.00**
- EVENSONG*** (Frazee '50—now Mrs. Jacobson). M. (N. J. Thomas x sdlg.) Unusually wide and full. We predict a great future for this lovely Mignon and Patriarch purple iris. Nothing quite like it. Will set some seed. H.M. '50. **\$5.00**
- EXTRAVAGANZA** (G. Douglas '41). L. (Adios x Cortez.) Cream standards, red-purple falls. Exciting parent for neglecta and amoena breeding. A.M. '47. **\$2.50**
- FABULOUS KATE** (Muhlestein '50). M. (Late Sun x Radiant) x (Pink Formal). Very large medium yellow with delightful form. There are some brown lines on the falls when first opened, but these soon clear away after a few hours. We think this will be highly useful for breeding pinks, blends, yellows and new colors associated with the tangerine beard. Highly fertile pollen **\$7.50**
- FAIR DAY** (McKee '49). M. ((Miobelle x Misty Rose) x (Moontide)) x (Moontide). Very wide, heavy-substanced yellow amoena in the Pinnacle color range. Will be a superb parent for this color as well as rich yellows, blends or reds. H.M. '49. **\$5.00**
- FAIRY FLAX** (P. Cook '51). E.-E. (Dwarf and T.B.) The new race of intermediates. Light blue self with white beard. 11 inches. H.M. '51. Net **\$4.00**
- FALL DAYS** (K. Smith '47). M. (Matula x Orange Glow.) Brown blend. H.M. '47. **\$7.50**
- FALL VELVET** (Dr. G. P. Brown '50). M. and Reblooms. (Autumn Sunset x September Sparkler.) Velvety purple with brown at hafts. Dependable re-bloomer even in New England. Net **\$3.50**
- FANCY FEATHER** (See Introductions).
- FANTASY** (D. Hall '47). M. (40-97): (Lullaby x 35-40: Dauntless x Rameses) x 39-62): ((36-1: W. R. Dykes x Morocco Rose) x Morocco Rose)). Lovely orchid with tangerine beard. Parent of Cherie and other new pinks. A.M. '49. **\$7.50**
- FAVORI** (Cayeux '34). M. (Marc Aureau x Cardinal.) Rich grape-purple. **\$.35**
- FIRECRACKER** (D. Hall '43). M. (Orloff x Elsa Sass.) Very bright yellow and red plicata. Splendid parent. H.M. '43. **\$2.50**
- FIRE DANCE** (O. Fay '47). M. ((Elsa Sass x Orloff) x (sister sdlg.)). Lovely, heavily marked, red plicata. Would like to see seedlings from this and new plicatas. **\$5.00**
- FLAMING FIRE** (J. Sass-Austin '50). M. (The Red Douglas x Prairie Sunset.) Very large red, lacking just a bit in substance, but should be a superb parent for reds and rich blends. **\$4.00**
- FLANDERS** (Tompkins '51). M. (Aria x Matador.) Dark ruby-red. 38 inches tall. With such superb breeding it will be a marvelous parent. Net **\$1.00**
- FLORADORA** (D. Hall '47). M. (42-10 x 42-05.) Large flamingo pink. **\$2.50**
- FLURRY MOHR*** (C. Rees '50). M. (Snow Flurry x Capitola.) Extremely large violet-purple. Standards a bit weak for such huge flowers. We discovered this makes a wonderful single-flower arrangement, or an ideal one to use for flat-dish work if the standards are bent down under the falls. If you cannot grow the Japanese Iris this is for you. It is breathtaking either in the garden or in arrangements if made into a "flat" iris. Your friends will be amazed. **\$2.50**
- FORT KNOX** (Milliken '41). E.-M. (Sungold x Chosen.) Beautifully formed light yellow. A.M. '44 **\$1.00**
- FORTUNE** (Kleinsorge '41). M. (Old Parchment) x ((Tuscany Gold x (Rameses))). Light copper with rich yellow undertones. Fine breeder if used with tall varieties. Blood for reds. . . **\$.50**
- FRANK DRAKE** (Grant '47). M.-L. (Snoqualmie x Golden Treasure.) Yellow standards, white falls flushed chartreuse around beard. . . **\$1.00**
- FROST GLINT** (Whiting '51). M.-L. (Vatican Purple x West Point.) Cold blue-white of superb substance. Wonderful breeder. H.M. '51. Net **\$6.00**
- FROSTY BLUE** (Whiting '41). M. (Shining Waters x Glorioso.) Large blue **\$.75**
- FUCHSIA** (D. Hall '51). M. (Tally Ho x Courtier.) New Fuchsia-orchid with tangerine beard.
- GALA FINALE** (DeForest '50). E.-M. (Vision of Mirza x Firecracker.) Yellow heavily overlaid Indian red, and appears, from a distance, to be red. Top blood for plicatas. H.C. '49. . . **\$12.00**
- GALLANT LEADER** (Wiesner '39). M. (Morning Splendor x Germaine Perthuis) x (Depute Nomblot). Fine wide red-purple. Quality blood for reds. The parent of Bellerive and other good seedlings. H.M. '39. **\$1.00**
- GALLANTRY** (Whiting '45). M. (Winneshiek x Mata Hari.) Ruffled medium-deep blue reminiscent of Chivalry. **\$1.50**
- GARDEN FLAME** (H. Sass '41). M. (83-34: sdlg. from King Tut) x (Miss Aravilla x 35-29: King Tut x Cardinal). Lovely, bright red. Should be fine for use with tall reds like Gypsy Rose, Velvet Mantle, etc. A.M. '43. **\$1.00; 3 for \$2.00**
- GARDEN GLORY** (Whiting '43). M.-L. (The Red Douglas x Garden Magic.) Accent on beauty of form and finish. Red-purple, smooth and glorious. Proving a delightful parent. A.M. '47 **\$2.00**

- GARDEN MAGIC** (Grinter '36). M.-L. (Wotan x Ella Winchester.) Splendid red and equally gratifying as the parent of Garden Glory, Ranger and other fine reds. A grandchild of Dominion (through Wotan) which would account for its ability to put quality into its seedlings. H.M. '37..... \$.75
- GAY BLADE** (Muhlestein '51). M. (Arab Chief x 45-12: E. B. Williamson x Prairie Sunset.) Bright orange-tan. Fine parent for tans and browns. \$3.50
- GAY BORDER** (DeForest '49). E.-M. (Tiffanja x Sister to Patrice.) White plicata evenly bordered maroon. H.M. '49. Net..... \$7.50
- GAYLORD** (G. Douglas '50). L. (Extravaganza x Wabash.) Large new amoena in heavy demand. Net \$20.00
- GAY ORCHID** (Muhlestein '49). E.-M. (Nylon x Golden Eagle.) Large flaring orchid with tangerine beard. Splendid parent for this color, pinks and salmons. H.M. '49..... \$5.00
- GAY SENORITA** (Salbach '44). M. (Alta Calif. sdg. x Miss Calif. x Happy Gift sdg.) Large variegata with falls heavily lined with chestnut. Produces unusual seedlings. H.M. '45.
- GAZA*** (Jory '49). E.-M. (Grace Mohr sdg. x Capitola.) Large Mohr-type clay-pink... \$5.00
- GEMS OF TOPAZ** (Wilson '48). E.-M. (Prairie Sunset x Tobacco Road.) Heavy subtanced topaz colored blend. Should produce rich seedlings \$3.50
- GENERAL PATTON** (Kleinsorge '47). M.-L. (310 x Bryce Canyon.) Deep red-copper. Somewhat slow of increase here, but fine color and breeding possibilities for blends and reds. H.M. '47 \$4.00
- GENTLE FLORENCE** (C. Taylor '47). E.-M. (Snow Flurry x Violet Symphony.) Good blue-white with better stalk than its parent S. F. Useful blood for blues, violets and whites. H.M. '47 \$2.50
- GILT EDGE** (Whiting '41). M. (Happy Days x Matula.) Yellow bi-color. Falls have light area in falls. Proving a dramatic parent for many colors \$.75
- GLADY'S MONCRIEF** (Aylett '44). E.-M. (Oregon Sunshine x Golden Hind.) Done in the manner of Pinnacle. Looked very good here last year and should be highly useful for hybridizing purposes. Only a few plants to offer this year. Net \$7.50
- GLAD TIDINGS** (Whiting '47). M. (Amitola x Copper Piece) x (Amaranth). Rich wax-yellow. Wide! Superb parent..... \$2.00
- GLISTENGLUB** (Muhlestein '49). E.-M. (Snow Flurry) x (Geneiveve Serouge x Mount Cloud). Very wide, heavy-subtanced white. Enough ruffling and character to give it a strong personality. Branching rather poor, its only fault, but we think you will call it magnificent. H.C. '47 \$5.00
- GLORIOLE** (Gage '33). E.-M. (Souv. de L. Mischaud x Queen Caterina.) Light, frosted blue, considered a great parent, but lovely in its own right. A.M. '35..... \$.50
- GOLDBEATER** (Kleinsorge '44). M. (Rebellion x Naranja) x (Far West). Richest yellow. Proven fine parent for blends and yellows, but should be equally good for red breeding. H.M. '45, A.M. '51..... \$1.00
- GOLDEN DAYS** (K. Smith '49). M. (Yel. Plie 1-51 x sdg.: Lord Dongan x Yellow Glory.) Clean new yellow that should breed plicatas, blends, reds and possibly pinks..... \$7.50
- GOLDEN EAGLE** (D. Hall '42). M. (38-26); ((36-11: W. R. Dykes x Dolly Madison) x (Morocco Rose) x (Prairie Sunset). Smoothest rich yellow. Beautiful flaring form. May lack a bit in substance and its seedlings may have weak branches, but I consider it tops for hybridizing, as does, surely, its hybridizer, for it is back of almost all of D. Hall's "Flamingo" pinks. Still holds promise for breeding work in shell pinks, yellows, blends and possibly reds. H.M. '42. \$1.00
- GOLDEN FLEECE** (J. Sass '40). M. (Siegried x Dore.) Standards light lemon-yellow, falls white bordered lemon. Buds tinged with lavender. Blood for this color, plicatas, blends, variegatas and no telling what else. A.M. '42 \$1.00
- GOLDEN HAWK** (K. Smith '51). M. (Cascade Splendor x Sdg.: 1-53 x Spun Gold.) Very wide, full, rich yellow. Net..... \$30.00
- GOLDEN GLEAM** (Miess '51). M. (Tiffanja x Tobacco Road.) Dandelion yellow self. Net \$10.00
- GOLDEN PLOVER** (DeForest '50). M. (Calderilla x Tobacco Road.) Simply stunning is this smooth, gold-dusted golden-tan self. H.M. '51 \$12.00
- GOLDEN RUFFLES** (C. Taylor '46). M. (Margaret Bond x Vivacious.) Smooth, wide and showy yellow. Always commanding! Probably has an upset number of chromosomes for it has no pollen and is a very difficult pod parent, and therefore may produce unusual seedlings if it can be induced to do so. Pollens that worked on it for me last year: Baghdad, Fabulous Kate and another Pink Formal seedling: 49-21-50. A.M. '49 \$2.50
- GOLDEN RUSSET** (D. Hall '46). M. (Invictus x 38-52) x (Golden Eagle). Gigantic russet that will simply "stun" visitors when well grown. Fine blood for this color, yellows, pinks, and possibly reds and variegatas. H.M. '47... \$2.50
- GOLDEN SPANGLE** (Cassebeer '44). E.-M. (Evolution x Happy Days.) Brighter yellow Golden Fleece type. Tall. H.M. '44..... \$.50
- GOLDEN SYMPHONY** (Horton '44). V.L.- (Plurabelle x Rameses.) This will close the iris season with a very colorful show. Yellow standards—lavender-blue falls. Last year we reversed this description, for which we are truly sorry. H.M. '50..... \$6.00

- GOLD RUFFLES** (Muhlestein '47). M.-L. (Mary Rich Lyon x Midwest Gem.) Large heavily ruffled medium yellow. Some lines at the haft, but quite a lovely flower nevertheless, and a remarkable parent for pinks, creams, blends and yellows. Would like to see this crossed on Snow Flurry, Glistenglow or New Snow. Its pink grandchildren are superb. H.M. '48. **\$3.00**
- GOLD SOVEREIGN** (Whiting '49). M. (Ola Kala x Rocket.) Simply stunning is this richest orange-yellow. Top blood for vivid colors in yellow, orange and possibly reds. H.M. '50. **\$7.50**
- GOOD NEWS** (Kleinsorge '46). M. (Mexico x Tobacco Road.) Glistening golden brown. Believe this is my favorite of such colors. H.M. '47. Net **\$2.00**
- GRACIOUS LADY** (See Introductions).
- GRAND CANYON** (Kleinsorge '41). M. (Treasure Island x Far West.) Rich plum and copper blend. Overlooked as a parent. Would suggest using Gypsy Rose, Cape Bon, Honeyflow, Casa Morena, Three Oaks, Dream Along, Sunset Road, Susitna Sunset. A.M. '44. **\$.75**
- GRATITUDE** (Snyder '50). E8-M. (?) Blue-bell self with slightly ruffled, semi-fairy falls, and light brown markings at hafts. H.C. '49, C. of C. '49. **\$4.00**
- GREAT LAKES** (Cousins '38). M. (Dominion sdlg. x Conquistador sdlg.) Quality blue that has been widely used as a parent and with great success. Dykes Medal '42. **\$.75**
- GREENGLOW** (Muhlestein '49). E.-M. (Sister to Glistenglow.) Very large, full greenish-chartreuse white. Should be highly useful for breeding toward greens or for creams, blues and whites. H.C. '48. **\$5.00**
- GREEN MOHR** (Muhlestein '51). M.-L. (Wm. Mohr x Chosen.) Strong greenish-chartreuse self—the falls having a slight lavender flush when first opened. Full "Mohr" shape. Will set seed. Won Seedling award Salt Lake City and C. of C. '50. **\$7.50**
- GREEN PASTURES** (Heller '47). E.-M. (Old Ironsides x Oregon Sunshine.) Yellow-chartreuse self. Form could be improved and may be a difficult grower in some sections—especially the mid-West, but of interest for hybridizing. Bluish-tipped beard. H.M. '47. Net. **\$3.50**
- GREEN SHADOWS** (H. Sass '43). M. Sulphine yellow self. Odd, but unusually fine in some seasons **\$2.00**
- GREEN WHISPER** (Joyce Button '49). M. (Matterhorn x Jake.) Kidskin white with greenish undertones. Should be useful for whites, greens, lemons and plicatas. **\$6.00**
- GREEN SPOT** (P. Cook '51). E.-E. (T.B. and Dwarf.) New race of intermediates. White with horizontal falls that have a one-half inch patch of solid green at end of beard. 12 inches tall. Net **\$5.00**
- GREIG LAPHAM** (Gage '48). M. (Spun Gold x Gloriole sdlg.) Smooth, mellow, lovely medium yellow. H.M. '48. Net. **\$3.00**
- GROS GRAIN*** (Craig '50). (Wm. Mohr) x (Paris-sima x Gudrun). Grey-lilac veined violet. **\$4.00**
- GULF STREAM** (O. Fay '46). E.-M. (Dymia x Narain.) Very dark blue-black. Highly valuable for "black" breeding. Stunning. H.M. '46. Net **\$2.00**
- GYPSY** (Kleinsorge '45). L. (Rebellion x Naranja) x (E. B. Williamson). Wonderful variegata. Blood for this color, blends, reds and oranges. H.M. Net **\$1.00**
- GYPSY BARON** (Schreiner '42). M. (Claribel x Mme. L. Aureau.) Almost a purple self, this heavily marked plicata. **\$.75**
- GYPSY MAID** (Gage '45). M.-L. (Arethusa x Red Bonnet.) Pinkish blend not unlike Lancaster but taller and better branched. Fine blood for reds **\$1.00**
- GYPSY ROSE** (Whiting '46). M. (Amaranth x Three Oaks.) Tall, well branched, red-copper blend. Rich and wide of parts; cannot miss as a top parent. We bloomed some lovely things from it x Miogem. Finest blood for reds. H.M. '49 **\$3.00**
- HALLELUIAH** (Welch '46). E.-M. (Gudrun x Easter Morn.) Fine quality cream. Sister to B 50, the parent of Blue Blazes. We think this cream will be most useful for blue, cream, white, pink and yellow breeding **\$2.00**
- HAPPY VALLEY** (Miess '50). M. (Mountain Sky x Narain.) Lovely medium blue. Splendid breeding for blues—either dark or light. **\$8.00**
- HARRIET THOREAU** (P. Cook '44). M. (Sister to Dreamcastle.) Clean orchid-pink. Fine parent. H.M. '45 **\$.75**
- HARVEST BLUE** (Dr. G. P. Brown '50). M. and Reblooms. (Autumn Sunset x Sdlg. of Missouri.) Not unlike Missouri in many respects, but a fine re-bloomer. Net. **\$4.00**
- HEART'S DESIRE** (J. Wills '50). M. (Copper Pink x True Love.) Rose red, falls brushed copper at hafts **\$5.00**
- HEATHER ROSE** (D. Hall '50). M. ((44-41: (42-26: Gay Troubadour x Mandalay) x (Overture)) x (Courtier.)) The name describes the color—a large flower of quality. Will be a fine producer of many interesting colors in the new race of pinks, orchids and salmons. H.M. '51. **\$7.50**
- HEBRON*** (Jory '49). E.-M. (Grace Mohr sdlg. x Capitola.) Honey brown with full Mohr shape. **\$5.00**
- HEIGHO*** (Craig '9). M. (Purissima x Capitola.) This is my favorite of the Purissima x Capitola seedlings I have seen thus far because of its very heavy substance and the signal patch at the beard. Extremely vigorous. H.M. '49. **\$15.00**

- HELEN COLLINGWOOD** (K. Smith '49). M. (Extravaganza x Louise Blake.) Beautiful, superb neglecta. Almost an amoena—will be highly useful for hybridizing, surely. H.M. '50. Net\$17.50
- HELEN FITZGERALD** (H. Thorup '48). E.-M. (Parisima x Wasatch) x ((Dolly Madison x W. R. Dykes) x (Souv. de Mme. Gaudichau x Ricciardi)). Smooth lobelia violet self. Such self colored iris are rare. This is a very large flower. Superb as an exhibition variety. Would recommend it as a splendid parent for whites, plicatas, pinks, blues and possibly amoenas to give them size and vigor. H.M. '49.....\$5.00
- HELEN MCGREGOR** (Graves '46). E.-M. (Parisima x Cloud Castle.) Superb light blue. Does fade in hot sun, but if planted in partial shade is magnificent. A wonderful exhibition flower, and will undoubtedly go down in history as a great breeder for blues and whites. Dykes Medal '49\$3.00
- HELEN MCKENZIE** (Graves '50). M. (Franconia: Alba Monte x Snowking) x (Mt. Jefferson: Snow Carnival x Cloud Castle). Pure white—not a touch of off color. Highly praised. H.M. '50. Net\$18.00
- HERITAGE** (D. Hall '49). M. (Tally Ho x Courtier.) Smooth pink deeper than Cherie. Should be a fine parent. H.M. '49, A.M. '51.....\$12.00
- HIGH COMMAND** (Long). M. (Eternal City x Louvois.) Very large brilliant, different, variegata. Splendid. A limited supply. Net.....\$2.50
- HI TIME** (D. Hall '50). M. (42-07: Golden Eagle x 39-52) x (Premier Peach). Lovely golden apricot self. One of Hall's best. We think it holds great promise as a breeder, and of course it has good garden value. H.M. '50.....\$8.00
- HIT PARADE** (D. Hall '47). E.-M. (Sister to Courtier.) Large pink with deep tangerine beard. Parent to the new Ballerina.....\$2.50
- HONEYFLOW** (Tompkins '44). M. (Aztec Copper x Veishea.) Smooth meadowsweet rose, brushed copper. Proving a remarkable parent for rich blends, coppers and tans. H.M. '46.....\$1.00
- HONOR BRIGHT** (DeForest '51). M. (Tiffanja x Firecracker.) Crome yellow ground plicata, with center flush of orange. White patch in falls. H.M. '51.
- HOOGIE BOY*** (Muhlestein '49). E. (I. hoogiana, regelia) x (Genevieve Serouge x Salutation). Will start the bearded season. Wisteria-violet brushed gold at hafts. Gold beard. Fertile pollen and sets some seed. H.M. '49.....\$2.00
- HOGSAN*** (Samuelson '47). E.-M. (I. hoogiana x San Francisco.) Tall blue, lacking a bit in substance and strength of stem, but useful for hybrid vigor. Blood for blues, plicatas and possibly whites. Fertile both ways.....\$2.00
- HOWARD WEED** (Kleinsorge '47). M. (314 x Bryce Canyon.) Light red-brown self....\$2.00
- HURRICANE*** (Craig '9). M. (Purissima x Capitola.) Large powder blue sometimes flecked with deeper blue. H.M. '49.....\$12.50
- ILLINOIS** (D. Hall '49). M. (42-26: Gay Troubadour x Mandalay) x (41-45: Invictus x Spring Chimes). Large creamy-yellow self. May be useful for breeding pinks. H.M. '50.....\$4.00
- ILLINOIS SUNSHINE** (Faught '46). E.-M. (Happy Days x Jean Cayeux). Very large brilliant yellow. May produce rich blends, oranges and shell pinks. H.M. '49.....\$1.00
- ILLUSION*** (Kleinsorge '43). L. (Ormohr x Red Cross.) Lovely orchid self. Blooms out all within a week, its only fault. Will set some seed. H.M. '47\$1.50
- INDIANA NIGHT** (P. Cook '42). M.-L. (Valor x Sable.) Large blue-purple. A.M. '44.....\$1.50
- INDIAN RED** (H. F. Hall '49). M. (R-64:) x (Color Sergeant). Pompeian red with coppery-rose undertones. Net\$5.00
- INSIGNIA** (Snyder '51). M. (Dreamland x Sass plicata.) Large, fully formed plicata of a new and novel arrangement showing its cream-white with cinnamon-brown markings to perfection. Sensational at the Sioux City meeting, given an H. C. award '50. Limited stock. Net\$25.00
- INSPIRATION** (Stevens '37). E.-M. (Pioneer x Magnifica, F 2.) Simply huge mulberry-pink. Always popular\$1.00
- ITALIAN JOY** (Stevens '47). M.-L. (Firelight x Copper Rose.) Standards rosy-wine flushed bronze, falls fuchsia. Great garden value.\$2.50
- IVORY PRINCESS** (Whiting '50). M.-L. (Parisima x Matula) x (White Goddess). Large, smooth ivory self. Blood here for many good qualities, smoothness, and a variety of colors.\$6.00
- JACK FROST** (Corey '51). M. (Snow Flurry x sdlg.: Gloriola x Shining Waters.) New ruffled white. H.M. '51.
- JAKE** (J. Sass '43). M. (Tiffany x Maid of Astolat.) White with inner glow of lemon. Always a good performance. Fine blood for plicatas and lemons\$.75
- JANE PHILLIPS** (Graves '50). M. (Helen McGregor x sdlg.: Pale Moonlight x Great Lakes.) Exquisite light blue with quality its mark of distinction. Falls flare and are slightly fluted. Should be a superb parent for blues and whites. H.M. '50. Net.....\$15.00
- JASPER AGATE** (Mrs. T. A. Williams '43). M. (Junduska x Consort) x (Cheerio). Brilliant low growing red-copper. Splendid parent when used with tall varieties. H.M. '44.....\$1.00
- JAVA JEWEL** (DeForest '51). M. (Rio Oro x Prairie Sunset) x (Copper River). Bright old gold. One of pollens that finally gave takes on Utah Spec.....

- JERICO** (McKee '50). M. (Miobelle x Misty Rose) x (Moontide). Orange-yellow with buff overlay on falls. Breeding deep yellows, blends and reds. H.M. '50.....\$10.00
- JOSEPH'S MANTLE** (Craig '49). M. (China Maid x Tiffany) x (Mitchell sdlg. (((Seduction) x (((Mitch. 1-115) x ((Sherbert v Yel. B 1) x (Alcazar x Esplendido))) x (Bronze Beacon x San Francisco))). Stunning brushed plicata, and a dependable re-bloomer.....\$5.00
- JULIET** (Kleinsorge '46). E.-M. (269 x Prairie Sunset.) Flame-copper and salmon. H.M. '47..\$2.00
- JUST ANNIE** (Muhlestein '51). M.-L. (Sister to Fabulous Kate.) Very large yellow and white bi-color, as distinct and charming in form as "her" sister. Net.....\$4.00
- KATHERINE FAY** (O. Fay '45). M. (Gloriole x 39-3, a Selene sdlg.) Large slightly ruffled, wide white. Superb blood for blues and whites. A.M. '47.....\$1.00
- KEZAR LAKE** (Knowlton '51). M. (Great Lakes x Easter Morn.) Superb new blue—will surely produce quality blues and whites. H.C. '48, H.M. '51.
- KIKI** (Graves '51). M. (Helen McGregor x Great Lakes.) Captivating, heavy substance blue. Two Dykes Medalists as parents—how can it miss as a breeder.
- KIM** (McKee '51). M. (Wo-Peen x White sdlg.) Beautifully formed plicata—an unexpected recessive from two whites.
- KING'S JESTER** (Stevens '48). M. (Madam Louis Aureau x ?.) At first glance this unusual plicata suggests Oncocyclus blood. Bazaar as a butterfly's wings. Net.....\$2.50
- KOREA** (Whiting '48). M. (Arab Chief x Cedar Rose.) Red-brown self. Splendid blood for reds, browns and rich blends.....\$3.00
- KWILSENA** (Tompkins '51). M. (Aria x sdlg.: Honeyflow x Jasper Agate.) Stunning cardinal red completely overlaid with smooth chocolate so it appears a red-brown self. With this blood it is going to prove a remarkable parent for reds and blends. Pronounced: Quil-Sea-Nuh—an Asiatic-Indian name meaning Rose at Dusk. Net\$20.00
- LADDIE** (Miess '51). M. (Missouri x Great Lakes.) Not unlike its parent Missouri for coloring, yet under some lights appears more silver than blue. Not quite as ruffled as Chivalry from the same parents it is as charming, nevertheless. H.M. '51\$10.00
- LADY ALBRIGHT** (Muhlestein '50). M.-L. (Veishea x Bronzed Copper.) Standards "Dianthus" (copper), falls Amaranth (rosy deep lavender) edged color of standards. One of the most colorful blends I have seen and surely the richest I have introduced. C.O.C. '49. H.M. '50. Limited stock. Net.....\$12.00
- LADY BOSCAWEN** (Graves '46). E.-M. (Purissima x Cloud Castle.) Large white of quality. Sister of Helen McGregor, Can's miss as a parent for blues and whites. A.M. '48.....\$2.50
- LADY DOZIER** (Dr. Dozier '51). M. (Ormohr x Brunhilde.) We were grieved at the passing of Dr. Dozier, December 4th, 1951, for he had just really begun breeding iris—both T.B. and Louisiana hybrids. He leaves this superb variety to the fancy, however, and several others we are testing. Lady Dozier is a rich cobalt or violet blue, very wide of parts due to its oncocyclus blood. It is, without doubt, the finest Ormohr seedling we have seen. H.C. '49, H.M. '51. Net.....\$20.00
- LADY ILSE** (K. Smith '51). M. (Jane Phillips x Kenne Valley.) Superb blue, worthy of its great heritage.
- LADY LOUISE** (Graves '47). M. (Snow Carnival x Katharine Laron: Jean Cayeux x Summer Tan.) Sister to Corporal Mary. Colonial buff (yellow) standards, white falls edged color of standards. Interesting blood for use with blends, shell pinks, whites and blues. H.M. '47\$5.50
- LADY MOHR*** (Salbach '44). E.-M. (King Midas x Alta Calif.) x (Capitola.) Oyster and char-treuse with suggestion of a "brown" signal from the beard area. Always dependable to perform well. Holds up under adverse weather conditions. A.M. '46.....\$1.00
- LADY MOON** (Whiting '50). E.-M. (Sister to Ivory Princess.) Cold white. Has produced the ruffled white for Mrs. Whiting that everyone is talking about. Net.....\$4.00
- LADY NAOMI** (O. Fay '41). M. (Violet Crown x Shining Waters.) Heavily marked and dotted plicata. Said to be especially useful with "Mohr" lines, H.M. '42.....\$ 50
- LAKE BREEZE** (O. Fay '45). E.-M. (Gloriole x Ballet Girl.) Delightful light blue. No pollen. Difficult pod parent. H.M. '45.....\$1.00
- LAKE GEORGE** (K. Smith '45). M.-L. (Prob. Madam Ulmann.) Blue-violet, flaring falls. Splendid blue parent. H.M. '45.....\$1.00
- LAKE SHANNON** (DeForest '45). M. (Souv. de Loetitia Mischaud x Jean Cayeux) x (Great Lakes). Medium blue with texture veining. Said to be a fine blue parent with Snow Flurry. Should be good for blue blends, too. H.M. '46\$2.00
- LAKE TENAYA** (Miess '50). M. (Mountain Sky x Great Lakes.) Splendid new blue with accent on form and quality. Top blue blood. H.M. '50\$5.00
- LAMPLIGHT** (Schreiner '44). M. (Amitola x Angelus.) Luscious peach-buff blend. Superb blood for breeding blends, pink and possibly reds\$1.50

- LAMPLIT HOUR** (Tompkins '47). M. (Lancaster x Honeyflow.) White standards, yellow falls. Will surely prove a useful parent for this color, blends, and possibly pinks. Breed to varieties with heavy stalks.....\$2.50
- LATE GUEST** (Muhlestein '46). L. (City of Lincoln x Royal Command.) Brown-red variegata that will help to close the season. Blood for this color, plicatas and possibly neglectas and amoenas\$1.00
- LAUREL HILL*** (G. Plough '49). M. (Wm. Mohr) x (Esplendido x Bruno). Rosy-red-lavender with Mohr shape and veining. Sets seed. Blood for reds, plicatas and blends.....\$4.00
- LAVENDER AND GOLD LACE** (Whiting '46). M.-L. (Moonglow x Matula.) Yellow standards flushed lavender. Falls lavender with yellow lace edge\$1.00
- LEADING LADY** (Lyll '50). E.-M. (Whiting 40-87: Matula x Midwest Gem) x (Yel. sdlg. probably Happy Days x self). Yellow standards, white falls edged yellow. Lovely in established clumps. H.M. '50. Net.....\$5.00
- LEILANI** (Washington '43). M. (Copper Crystal x Melitza.) Orange-pink with lines in falls. Considerable garden value. H.M. '45.....\$4.00
- LIGHTS ON** (Lapham '46). M. (Christabel x Red Gleam) x ((Red Sails x Jerry) x (Red Gleam)). All red breeding. Produces fine reds. Would suggest breeding to tall varieties like Red Valor, Ranger, Dreamland, Aria, Apex, Gypsy Rose, Velvet Mantle, Moonrite and Solid Mahogany. H.M. '46.....\$3.00
- LILAC LANE** (Whiting '48). M. (Purissima x Matula) x (Gilt Edge). Splendid light colored lilac self. H.M. '48, A.M. '51.....\$7.00
- LITTLE LAKE*** (Muhlestein '51). E.-E. (J. Sass OP 35-9 a hoogiana sdlg. x. Chivalry.) True blue with horizontal flaring falls that have deeper blue shadings at the hafts. Fertile both ways. Good for flower arrangements where a small and jaunty iris is needed. 20 inches high. \$3.00
- LODESTONE** (Whiting '50). M. (Sister to Gold Sovereign.) Deep chrome yellow—deeper in falls. Producing startling seedlings in reds, browns, orange-yellows and blends. Here is a real breeder with vigor and fast increase to pass on to its offspring.....\$2.50
- LORD DONGAN** (K. Smith '40). M.-L. (Andante x Dauntless) x (Nene). Rich, broad Chinese-violet and pansy-violet. H.M. '40.....\$1.00
- LOS ANGELES** (Mohr-Mitchell '27). M. (Conquistador x Parisiana) x (Esplendido). Lightly marked white plicata. Splendid parent—good blood for blues, whites and plicatas. A.M. '44\$ 40
- LOTHARIO** (Schreiner '42). M. (M. M. Lassailly x Winneshiek.) Beautiful, large neglecta, Rich. H.M. '45\$1.00
- LOUISE BLAKE** (K. Smith '43). M. (M. M. Lassailly x Wabash.) Neglecta in near-amoenas coloring. Parent of Helen Collingwood. A.M. '47...\$1.50
- LOVE STORY** (Mrs. J. A. Sapp '50). M. (Golden Eagle x D. Hall's 43-18.) Perky, flaring new flamingo pink. Tall, well branched stalk. Highly recommended by all who see it. H.M. '50\$10.00
- LUCERNE** (Salbach '40). M. (Shining Waters x Brunhilde.) Lovely medium blue that always sells out. Splendid blood for blues.....\$.50
- LYNN LANGFORD** (D. Hall '46). M. Smooth orchid with gold outpouring on hafts. A.M. '50\$3.00
- MABEL CHADBURN** (Chadburn '41). M. (Sister to Joan Lay.) Corrected spelling. Yellow. English Dykes Medal winner '41.....\$2.00
- MADAM MOHR** (Becherer '51). M. (Morera x sdlg.: Dauntless x Tropic Seas.) Lovely, smooth powder-blue with onco form. The only Morera seedling we know of. 40 inches tall. Net. \$7.50
- MAGIC MIST** (Tompkins '50). E.-L. (Sdlg.: Honeyflow x Chamois) x (Nankeen). Chamois-buff with faint infusion of flesh pink. Broad oval petals with lustrous sparkling finish. Net. \$1.00
- MAGIC SAILS** (Nesmith '51). M. (Helen McGregor x St. Regis.) Superb new blue. H.M. '51.
- MAGIC WAND** (Kleinsorge '46). M. (Tobacco Road x Daybreak.) Tan blend.....\$1.50
- MAJNUN*** (Baker '49). E.-M. (Plicata sdlg.: x I. Lorteti.) Very large chrome yellow self with orange beard. Sets seed. Corrected spelling\$7.00
- MANYUSYA** (J. Sass '44). M. (No-we-ta x.) Ruffled orchid-pink\$.75
- MAPLE FLAME** (Whiting '50). V.-L. (Prairie Sunset x Veisheca.) Warm gold flushed cardinal red. As interesting as the maples in autumn.
- MAPLE SUGAR** (Whiting '48). M.-L. ((Marisha x Amitola) x (China Maid)) x (Harvest Moon). Luscious maple-tan. Blood for blends and pinks\$2.00
- MARATHON** (Whiting '48). M. (Mellowglow x Cedar Rose.) Similar to Mellowglow. Splendid breeding for blends, tans.....\$2.50
- MARJIE** (DeForest '50). M. (Tiffanja x Tobacco Road.) Deep yellow.
- MAROON DAMASK** (Kleinsorge '46). M. (Mexico x Red sdlg.) Deep, rich red.....\$1.00
- MARQUITA** (Cayeux '31). M. (Symphonie x Helios.) Ivory, falls veined watermelon. \$.50
- MARSALA** (DeForest '51). M. (Sister to Color Carnival.) Deep orchid with tangerine beard. Net\$10.00
- MARTIE EVEREST** (Kirk-McDade '35). E.-M. Re-blooming blue\$.35

MARY CLOTILDE (Kinish '44). E.-M. (Blue Triumph x Shining Waters.) Smooth, clear blue. Delightful spicy perfume. Produces lovely seedlings. Should be used with very large varieties. **\$1.00**

MARY ELLEN (McKee '47). M. (Mary Vernon x Miobelle.) Ox-blood red bi-color, not unlike Mexico. Rich blood for many colors. H.M. '47 **\$2.00**

MARY E. NICHOLLS (Nicholls '39). M. (Valor x Lucero.) Cream-white with gold at hafts. A.M. '43 **\$.50**

MARY RANDALL (O. Fay '51). M. (New Horizon x sdlg.: Pink Cameo x Cherie.) Deep orchid or "Bengal Rose". Rich, smooth and lovely self with tangerine beard that will undoubtedly be a superb parent. H.M. '51. Net. **\$25.00**

MARY VERNON (McKee '42). M. (3814 x Janet Butler) x (Chosen). Blended variegata that should produce this color, reds, and rich yellows. A.M. '45. **\$1.50**

MASIE LOWE (also known as Mrs. J. L. Gibson) (Gibson '30). M. (Dominion x Souv. de Mme. Gaudichau.) Smooth rich purple. Old but still fine. Great blood for blues and purples. Eng. Dykes Medal winner 1948. **\$.50**

MASKED BALL (W. Buss '49). M. (Gypsy Baron x .) White plicata. Standards so heavily marked it appears to be a reverse amoena. **\$7.50**

MASTER CHARLES (M. Williamson '44). M. (BB 2932 x .) Glowing Mulberry. A good performer. A.M. '46. **\$1.00**

MASTER NEIL (See Introductions).

MATTIE GATES (Sass Bros. '46). M. (Golden Fleece) x (40-371, two yel. plics.) A beauty done in very bright lemon and white spangling. A.M. '50 **\$7.50**

MAYAN MAGIC (Tompkins '48). M. (Mellow-glow x Prairie Sunset) x (Ola Kala). Luscious, ruffled coppery orange and pink blend. Net **\$1.00**

MAY CHARM (Whiting '48). M. (Mirabelle x Angelus.) Pink blend sister to Pathfinder. Net **\$1.00**

MAYTIME (Whiting '50). M.-L. (Shannopin x Pathfinder.) Large bi-orchid-pink amoena. Large and quite smooth. Should be highly useful for many colors. H.M. '50. Net. **\$20.00**

MELODIST (DeForest '46). M. (Salar x Tobacco Road.) Large flaring henna blend. H.M. '47 **\$2.50**

MELODY LACE (Muhlestein '46). M. (Mme. L. Aureau x Tiffany.) Refined primrose plicata edged lavender-pink. Beautiful, ruffled buds **\$.75**

MELODY LANE (D. Hall '49). E.-M. (? Stardom x ? 42-05.) Large golden apricot. H.M. '50. **\$7.50**

MELLOWGLOW (Whiting '42). E.-M. (Midwest Gem x Fiesta.) Luscious apricot blend. Good parent for blends and shell pinks. H.M. '42 **\$2.00**

MERRY ROSE (Muhlestein '48). M.-L. (Lancaster x Daybreak.) Smooth rose. Highly branched but its seedlings have good branching. **\$1.00**

MEXIA (Whiting '47). E.-M. (Sister to Three Oaks.) Lovely pink blend. **\$.75**

MEXICAN MAGIC (Whiting '47). M. (Crimson Tide x E. B. Williamson) x (Veishea). Blend of Spanish-red, brilliant blue and molten copper. H.M. '47. Net. **\$5.00**

MEXICO (Kleinsorge '43). M. (Rebellion x Naranja) x (Treasure Island x Apricot). Rich variegata blend. One of the most startling new parents. Good for many colors: blends, reds, variegatas and oranges **\$1.50**

MICHAEL BARTON (Tompkins '47). E.-M. (E. B. Williamson x Bright Melody.) Rich carmine-magenta over deep Hollyhock-red. Similar to Vice Regal. H.C. '45. **\$3.50**

MIDWEST GEM (H. Sass '37). M. (Sis. to Matula.) Ruffled pale buff blend. Splendid parent to give ruffling, and substance. Produces shell pinks if crossed with them. H.M. '37. **\$.50**

MING YELLOW (Glutzbeck '37). M. (Mrs. V. West sdlg. x W. R. Dykes) x (Depute Nomblot). Big showy yellow. Blood for reds, etc. A.M. '41 **\$.75**

MIOBELLE (McKee '45). M.-L. (Naranja x Janet Butler) x (Aubanel). Rose blend. Could be highly useful for blends and reds. H.M. '45 **\$1.00**

MIOGEM (McKee '47). M. (Miobelle) x (43-67 x Ming Yellow). Stunning broad rose with metallic flush in falls. Good substance. H.M. '47 **\$2.00**

MIRABELLE (Whiting '41). M.-L. (Matula x Happy Days.) Light peach blend that is proving a wonderful parent. H.M. '41. **\$1.00**

MIRROR LAKE (Muhlestein '47). M.-L. (Blue Spire x Great Lakes.) Tall medium blue with lovely form. Producing fine blue and white seedlings. H.M. '48 **\$1.00**

MISS BISHOP (J. Sass '42). M. (Tiffany x Maid of Astolat.) Lovely white sister to Jake. Beautiful buds **\$1.00**

MISSOURI (Grinter '33). M.-L. (Sensation x Blue Ribbon.) Medium deep blue with brown on hafts. Dykes Medal '37. **\$.50**

MIST GLOW (Muhlestein '48). M.-L. (Sundust x Radiant.) Amoena with white standards and light lavender falls reticulated gold. Fine parent **\$3.00**

MISTLETOE (Ketchum '36). M. (?). Deep cream standards, falls white with edge color of standards, flushed faint blue. Almost a twin for Star Shine. Limited stock. Net. **\$3.00**

- MISTY GOLD** (Schreiner '43). M. (Tiffany x Siegfried.) Everyone loves this lemon and white beauty. Fine blood for plicatas and lemons. H.M. '45\$1.00
- MOAB** (Jory '49). E.-M. (Grace Mohr sdlg. x Capitola.) Deep brown, strange and exotic, of full "Mohr" type. Net.....\$4.00
- MOHR BEAUTY*** (Milliken '49). M. (Elmohr x yel. sdlg. involving: Lady Paramount, Cheerio, Easter Morn, Camillard, Aurifero, Henri Riviere, Dauntless, Alta Calif., Loudon, New Albion and Chosen.) Light yellow with very heavy substance. Harks to Elmohr shape. \$7.50
- MOHRDYKE** (Aylette). M. (Wm. Mohr x W. R. Dykes.) Odd silvery-blue, definitely showing its strange and unusual pedigree. Limited stock. Net\$10.00
- MOHRESQUE*** (A. D. Keith '50) E.-M. (Doxa x Zwanneburg.) Standards light brown. Falls yellowish-buff at edges deepening to near chartreuse at hafts with purplish flecking all over the falls. Wide and full. Oddly colored so some will like it—others will not. Sets some seed. Height 38 inches. Net.....\$2.50
- MOHR GLORIOUS** (See Introductions).
- MOHR VELVET** (See Introductions).
- MOLTEN** (Craig '50). M. (Prairie Sunset x Sultan's Robe.) Burnt sienna, rose and ocre. Falls have a blue blaze. Superb breeding for rich blends\$10.00
- MONTY** (Miles '46). M. (Trader Horn: Directeur Pinelle x Gudrun) x (Spokane). Orange-tan standards, velvety red-brown falls. Large flower of very heavy substance. Said to be outstanding. Net\$3.00
- MOON GODDESS** (Craig '49). M. (Advance Guard x Mitchell 2-21) x (Blue sdlg.). Large pale wisteria, very broad. Ruffled.....\$7.50
- MOONLIGHT MADONNA** (J. Sass '43). M. (Yel. Sdlg. x Elsa Sass.) Clean lemon-yellow self. Fine grower. A.M. '45.....\$1.00
- MOONLIGHT MOOD** (Tompkins '50). M.-L. (Moon Lantern x Miss Bishop) x (Sass 40-371 x Dr. Loomis' "Type Dore"). Ruffled deep cream with broad border of shimmering gold around all petals. Superb. Net.....\$7.50
- MOONLIGHT SERENADE** (See Introductions).
- MOONLIGHT SONATA** (Stevens '46). L. Lime or lemon-sulphur yellow self.....\$6.00
- MOONLIT SEA** (J. Sass '43). E.-M. (Undoubtedly Tiffany-Orloff lines.) Yellow ground heavily overlaid blue. Effective planted near lemon-yellows\$.50
- MOON SONG** (Tompkins '49). M. (Lullaby x Moonlit Sea.) Clear orchid with undertone of cream. Yellow in the throat. Net.....\$1.00
- MOONTIDE** (McKee '46). E.-M. (Red Gleam x Mary Vernon.) Very wide, rich yellow. Proving a remarkable parent for rich orange-yellows; top blood for reds. H.M. '46.....\$4.00
- MORNING BLUE*** (Jory '48). E.-M. (Purissima x Capitola.) Wide rich medium blue. Sets seed\$5.00
- MORNING BRIGHT** (P. Cook '51). M. (Standards cream tinged pink. Falls semi-flaring creamy old rose, deeper at mid-portion, to cream at margin. Net\$12.00
- MOUNTAIN SKY** (Milliken '41). M. (Undoubtedly Purissima blood.) Fine dependable, quality, blue and a good parent.....\$.75
- MOUNT DIABLO** (Mitchell '50). M. (O-84 variegata x Sultan's Robe.) Large red with strong garden value\$5.00
- MOUNT HERMON** (Lowry '45). M. (Buechley Giant x Phebus.) Plain white. Always a good performer. Sister to Syringa. H.M. '45...\$1.00
- MOUNT TIMP** (Muhlestein '45) E.-M. (October Opera x Tiffany.) Very large rose trimmed plicata that starts the season and blooms over a long period of time. Garden visitors like it. Reblooms in favorable climates.....\$.75
- MRS. DOUGLAS PATTISON** (Craig '50). M. (Mountain Sky) x ((Acropolis x Destiny) x (Great Lakes)). Lovely cornflower blue self of beautiful form. Wonderful blood for blues and purples. H.M. '51. Net.....\$15.00
- MRS. SYDNEY MITCHELL** (Mitchell '51). M. (Snow Flurry x Great Lakes.) Splendid new blue.
- MT. ARARAT*** (Jory '49). E.-M. (Grace Mohr x Miss Muffet.) Onco-bred type of white plicata marked violet.
- MT. MCKINLEY** (Schreiner '47). E.-M. (Amigo x Wabash.) Amoena to start the season. Tall well branched stalk\$2.00
- MT. SINAI*** (Jory '49). E.-M. (Grace Mohr sdlg. x Capitola.) Dark brown.....\$3.00
- MULBERRY ROSE** (Schreiner '41). M. (Frieda Mohr x Violet Crown or Ozone.) Large Mulberry with brown on hafts. A.M. '44.....\$1.00
- MUSTAPHA*** (White '44). E. Oncobred. Falls flare horizontally. Reddish over yellow ground. Net\$.75
- MY DAY*** (Tharp '44). E.-M. (Wm. Mohr x Los Angeles.) Large violet with strong white undertones\$1.00
- MYOMY*** (White '47). E. Lovely oncobred showing strongly its onco blood. Net.....\$1.50
- MYSTIC MELODY** (Stevens '51). M. (Happy Days x Calif. Gold) x (Lagos x Sdlg.: Lady Morvyth x Rangatira). Cream standards, butter-yellow falls. Sister to Summit. Net.....\$12.00

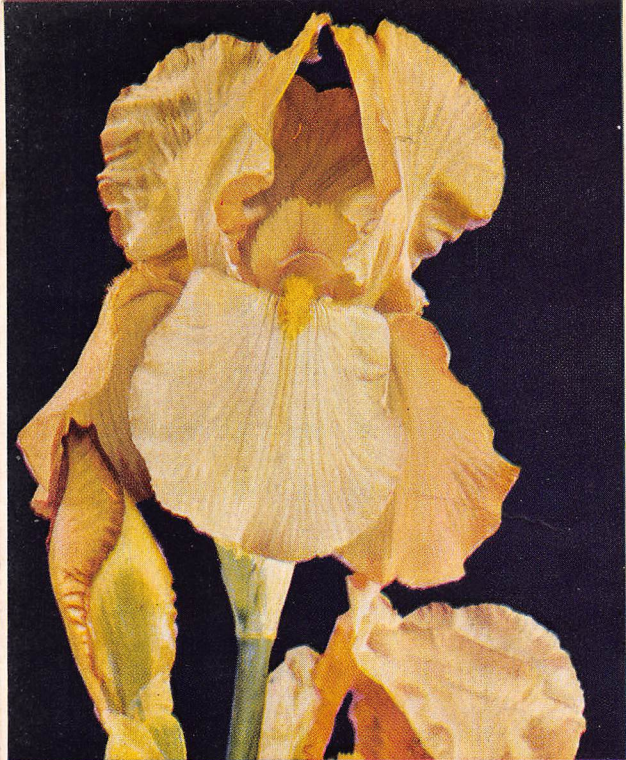
- NANKEEN** (Whiting '47). E.-M. (Mirabelle) x (Sdlg. of Rameses x Elsa Scass). Cool Chinese yellow overlaid chrome yellow. Wonderful blood for many colors.....\$3.00
- NATIONAL WHITE** (Weed '44). M. (Gudrun x Buechley Giant?) Huge white that always makes a good show. Proving a superb parent. Net\$.75
- NEW ERA** (Scass Bros. '49). E.-M. ((Wambliska x Dore) x (Calif. Gold)) x ((Tiffany x Orloff) x (Casque D'or)). White standards, olive-yellow falls. Different, rather than beautiful, but may be highly useful for breeding yellow amoenas or greens\$4.00
- NEW HORIZON** (O. Fay '46). E.-M. ((Morocco Rose) x (Hall's 40-24: 35-40 x Lullaby)) x (Overture). Bi-peach-pink with tangerine beard. Fine parent. H.M. '47.....\$3.00
- NEW HOPE** (DeForest '50). E.-M. ((P 42: (Alta Calif. x Sacramento) x (Sib.) x (Tiffany)) x (Blue Shimmer). Large beautifully formed new plicata heavily bordered medium violet-blue. Simply stunning. H.M. '51. Net.....\$10.00
- NEW SNOW** (O. Fay '46). E.-M. (Snow Flurry x 41-11: Katherine Fay sister.) Wide ruffled white that is proving a wonderful parent for blues and whites. A.M. '48.....\$3.00
- NIGHT LIFE** (Muhlestein '48). M. (Storm King x Sable.) About as black as we have seen. Large flower on somewhat short stalks. Should be highly useful for breeding "blacks", and will surely put size into them.....\$5.00
- NIGHT SPOT** (Muhlestein '49). M.-L. (Storm King) x (Prince Valiant: Joycette x McCall). Tall, well branched bi-black-purple. Falls flare horizontally. Gave me some of the finest seedlings last year. I think it holds great promise as a parent. Limited stock.....\$3.00
- NINE HEARTHS** (Rawlins '48). M. (Wabash x Snowking.) This wide, heavily substandard white stole our hearts, and how we tried to set seed on it, without success. If it proves to be fertile at all will surely put some quality into the Amoena class.....\$4.00
- N. J. THOMAS*** (Thomas-Thorup '44). E.-M. (Wm. Mohr x ? Cardinal.) Bi-blue-purple. Will set some seed\$.50
- NOONDAY SKY** (Weed '40). M. Lovely blue with delightful form\$.50
- NOVA GRANDE** (Tompkins '49). M. ((Golden Hind x Late Sun) x (Cloth of Gold)) x ((Golden Hind x self) x (Ola Kala)). Brightest yellow with a velvety finish. Superb breeding for yellows and orange-yellows.....\$5.00
- NYLON** (Whiting '40). M. (Amitola x Sandlewood.) Large nylon-tan. Possibly has been overlooked as a superb parent. I think it is a better breeder for quality than Prairie Sunset. Produces shell pinks when bred to them.\$.50
- OLA KALA** (J. Scass '43). M. ((Amitola x) x (Prairie Sunset) x (Golden Age x). Tall, brilliant yellow. Long a top favorite. Dykes Medal '48\$1.00
- OLD PARCHMENT** (Kleinsorge '39). E.-M. (Treasure Island x Far West.) Smooth parchment-buff-pink. Splendid parent. One of our Robin members recommends it for producing smoothness in reds. A.M. '41.....\$.50
- OLD ROSE** (Salbach '40). M.-L. (Marquita x Monadnock) x (Dark Knight). Line bred from Marquita. Tall, large old-rose. Always popular\$.50
- OLYMPIO** (Cayeux '36). M. Large red-purple. Scarce. Dykes Medal France '46. Net...\$5.00
- ONE CLEAR CALL** (Tompkins '51). M. (Ave Maria x SnowCarnival.) Large, clean, flaring, ruffled white that commands attention. Really very fine. H.M. '51.....\$15.00
- ON GUARD** (C. Carpenter '49). M.-L. (Ming Yellow x Yel. Dr. Grant sdlg.) Warm soft yellow with light area in falls. Picoteed edges. H.M. '49\$5.00
- OPAL CLOUD** (Kleinsorge '49). M. (Cascade Splendor x Daybreak.) Terra-cotta pink with pale violet suffusions. Good breeding for blends\$3.00
- ORANGE FLARE** (Covert). E.-M. (City of Lincoln x Naranja.) Orange-yellow bi-color. Quite similar in coloring to Rocket. Flaring falls a bit short, yet we find it an excellent parent for reds and deep yellows. Net.....\$1.00
- ORANGE GEM** (McKee '48). M. (Red Gleam x Mary Vernon) x (Moontide). Very large deep orange-yellow. Will surely be a superb parent for deep orange-yellows and reds. H.M. '49 \$5.00
- ORANGEMAN** (Waters '46). M. (Naranja x Golden Majesty.) Large, deep orange-yellow. Reports say it is a superb parent. H.M. '47.....\$2.50
- ORELIO** (DeForest '47). M. (Casa Morena x Garden Flame.) Large red, very showy. Wonderful blood for red breeding. H.M. '49. \$3.00
- ORIENTAL BAZAAR** (Buneaux '48). M. (Miss Calif. x D. Hall pink blend 41-1) x (Majenica). Blend of orange, buff and metallic lavender. Wonderful blood for rich blends, yellows, reds. H.M. '48\$3.50
- ORIENTAL SPLENDOR** (Salbach '50). M. Standards mahogany red. Falls mahogany brown shading to gold at haft. Brilliant blue blaze in center of flaring falls\$10.00
- ORMACO*** (Kleinsorge '42). M. (Ormohr x Aztec Copper.) Rich purple with copper undertones. Fertile both ways. H.M. '47.....\$1.00

- ORMOHR*** (Kleinsorge '37). M. (Wm. Mohr x Anakim.) Large violet. Good pod parent. With Great Lakes, Blue Valley, Mirror Lake, Blue Rhythm, Pierre Menard or Cahokia should produce some splendid blues and violets. The parent of Lady Dozier. A.M. '40. \$.50
- PACEMAKER** (Lapham '50). M. (Edward Lapham x Red Waves.) Large, tall, wide and full bodied red that is quite impressive. We think it holds great promise as a breeder. H.M. '50 \$10.00
- PAGAN GOLD** (G. Douglas '51). M.-L. ((White Prince x Easter Morn) x (Golden Hind)) x (Mimosa Gold). Rich, gleaming gold. The falls appear quite velvety. H.C. '48.
- PAGAN PRINCESS** (G. Douglas '48). E.-M. (Pink Cameo) x ((40-10 x Melitza) x (Flora Zenor)). Purple with strong pinkish undertones. Tangerine beard. Said to produce startling seedlings. H.M. '48. Net. \$3.00
- PAGAN ROYAL** (G. Douglas '51). M. (Gulf Stream) x (The Bishop x The Black Douglas). Glowing red-violet that is very commanding in the garden. Superb blood for dark things. H.C. '48.
- PAGAN SUNSET** (G. Douglas '51). M. (True Love x Alpine Glow.) Blending of orange, rose, apricot and copper in a striking flower.
- PAINTED DESERT** (Milliken '42). E.-M. (China Maid x Chosen.) Tan blend. Will throw shell pinks if bred to them. \$1.00
- PALE DAWN** (O. Fay '47). E.-M. (Matterhorn x 44-11.) Light blue that holds its color. H.M. '47 \$2.50
- PALE PRIMROSE** (Whiting '46). M. (Happy Days x Midwest Gem.) Large ruffled yellow. A.M. England '50, H.M. '50. Net. \$1.00
- PALIDA F. VARIEGATA** (Krelage.) E. Small blue flowers with grape perfume. Foliage green striped yellow. Makes an unusually interesting border plant any time of year, and especially against green shrubbery. . . . \$.50
- PARADISE PINK** (Lapham '50). M.-L. ((Forerunner: (Rosalba x Opera) x (Red Ray)) x (H 6: Spindrift x Isabellina). Large, very wide pink that holds its color well. Has received high praise in the Mid-west and East. Will surely prove a splendid parent. H.C. '49, H.M. '50. Net \$10.00
- PARAGON** (Stevens '48). E.-M. (Inspiration) x (Caribbean Treasure: Miss Calif. x Cedar). Opalescent pearly tints, falls margined in coppery-buff with the same color flushed in the throat \$5.00
- PAROWAN** (H. Thorup '51). E.-M. ((Lord of June x Lent a Williamson) x (Sherbert x Moa)) x (Pute). Beautifully formed smooth red with good closed standards. Will surely be a splendid parent for reds. Height 30 inches. Net. \$4.00
- PARTY DRESS** (Muhlestein '51). M.-L. (45-22: Lancaster x D. Hall's 42-10) x (46-22B: sister to Pink Formal). Charm, personality and quality all wrapped up in one ruffled pink. Its seedlings were the quality we had hoped, and it produced the longest, most varied and colorful beards in its seedlings. Party Dress will appeal to those who like ruffled, quality flowers and hybridizers will bless the splendor of its seedlings. H.C. '50, H.M. '51. Net. \$15.00
- PASTEL PORTRAIT** (Whiting '48). M. ((Marisha x Sandlewood) x (Marisha x Amentii)) x (Angelus). Cream flushed pink. Net \$1.00
- PATHFINDER** (Whiting '48). M. (Mirabelle x Angelus.) Very wide rose-pink. First nicknamed "the fat pink." Will produce shell pinks if bred to them. Branching rather high. H.M. '48 \$12.00
- PATRICE** (DeForest '45). M. (Tiffany x Salar.) Large delicately marked plicata. Splendid breeder. Possibilities for oranges, reds, plicatas and blends. H.M. '46. \$1.00
- PATRICIA JOYCE** (Laura Pullar '50). E.-M. (Purissima x Bruno sdlg.) Smooth tailored cream done on patrician lines. Fine blood for creams, yellows, whites and blues. \$3.00
- PEARL KING** (Errey Bros. '40). E. M. (W. R. Dykes x Silversheen.) White standards, light yellow falls. Large. Will be highly useful for breeding yellow amoenas. Limited stock. Net. . . . \$5.00
- PEARLY MORN** (Thorup '51). M. (Snow Flurry x ((Dolly Madison x W. R. Dykes) x (Souv. de Mme. Gaudichau x Ricardi)). Very large full white with pearly undertones. Nothing quite like it. In a wet season these pearl tones sometimes concentrate in lavender flecking, but we have only experienced this once since its first blooming. First in Seedlings Salt Lake City 1949. H.C. '49. \$15.00
- PEG DABAGH*** (T. Craig '48). E.-M. (Purissima x Capitola.) Large clear blue-violet. Won the gold cup at Hollywood Iris Show '49. H.M. '48 \$7.50
- PENN CHARTER** (H. F. Hall '48). M. (Two yellow sdlgs.) One of the few flaring yellows. Very fine indeed. Net. \$4.00
- PENNYRILE** (Rawlins '48). E.-M. (Great Lakes x Gloriole.) Medium blue. Sister to Alicia. Superb blood for blues and whites. \$5.00
- PEPPER*** (Marx '50). E.-M. (Suez x Orloff.) Neatly formed, peppered, yellow ground plicata. Net \$1.50
- PERMANENT WAVE** (Williams '48). M.-L. (Blue Triumph x Waverly.) Flaring blue with yellow at the heart. Ruffling on tips of the falls add to its charm. \$6.00
- PERSIAN PATTERN*** (Craig '50). E.-M. (Gay Senorita x Ib-Mac.) Standards gold with olive cast at midrib. Falls same with maroon pattern etched over all. \$10.00

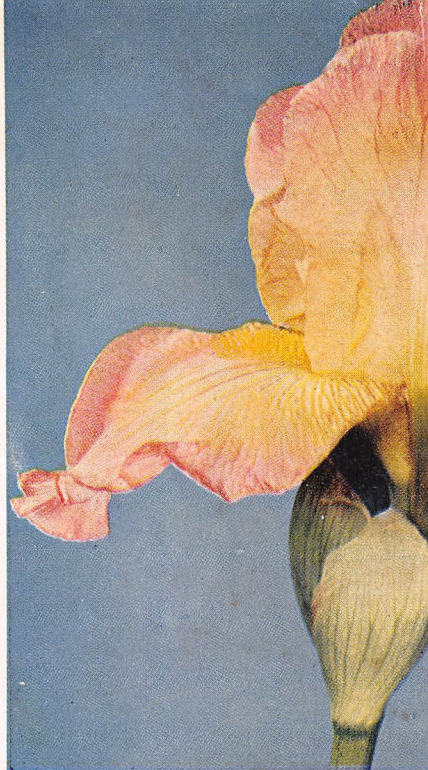


LYNN LANGFORD . . .

(Page 16)



CHAMOIS (Page 8)



CASCADE SPLENDOR (Page 7)

EXTRAVAGANZA (Page 11)





RAINBOW ROOM (Page 22)



CHAR-MAIZE (Page 8)

NEW SNOW (Page 19)





SEA LARK

(Page 24)

- PESHAWAR*** (Schreiner '37) E. (Ib-Mac x sdlg. of Chamaeiris.) Delightful rich mulberry to start the iris season. Fast of increase. Sets some seed and has somewhat fertile pollen. . . . \$.50
- PIERRE MENARD** (Faught '48). M.-L. (Sister to Cahokia.) Deep rich flaring blue. Lots of individuality and charm. H.M. '48. . . . \$10.00
- PINAFORE LASS** (F. Cook '51). M. (Snow Flurry x White Wedgewood.) Ruffled purple with white area in falls. Novel.
- PINK BOUNTIFUL** (P. Cook '49). M. (Harriet Thoreau x sdlg. from: Susan Bliss, Morning Splendor, Varese, Rameses.) Delicate orchid-pink. Heavy bloomer. H.M. '51. . . . \$6.00
- PINK CAMEO** (O. Fay '46). M. (42-02: Morocco Rose x D. Hall's 40-24) x (D. Hall's 42-07—sister to Dream Girl). Lovely tailored pink. Fine parent. A.M. '48. . . . \$2.50
- PINK CLOUD** (O. Fay '36) M. (Ethelynn Dubuar x sdlg.) Delicate orchid-pink. Lovely enmass. A diploid \$1.00
- PINK CORAL** (Whiting '49). M. (Mirabelle x Cedar Rose.) Warm coral pink with amber yellow center. Net. . . . \$3.50
- PINK FORMAL** (Muhlestein '49). E.-M.-L. Golden Eagle x SQ 72.) Very large, wide deep pink on the salmon side with a deep red-tangerine beard. Pink Formal has the heaviest substance of any pink we know, and puts this mark of quality on its children and grandchildren. It is a remarkable parent. Stock still quite scarce due to the demand. H.C. '47, H.M. '49, A.M. '51. Net \$15.00
- PINK REFLECTION** (P. Cook '42). M. (Fancy Free x Sandia.) Delicate light pink with flaring falls. A.M. '44. . . . \$1.00
- PINK RUFFLES** (K. Smith '40). E. (No-we-ta x Eros.) Low border iris. Ruffled orchid-pink. "Loads" of charm, A.M. '42. . . . \$.75
- PINK SALMON** (Muhlestein '48). E.-M. (Spindrift x Golden Eagle.) Showy salmon-pink. Its seedlings are splendid for height, size and color. We are proud the pollen we sent to C. W. Tompkins gave him a tall, well branched salmon named Apricot Supreme. . . . \$4.00
- PINK SENSATION** (D. Hall '48). M. (Tally Ho x Courtier.) Splendid deep pink with a lot of quality. Should be a top breeder. H.M. '50. Net \$10.00
- PINK TALCUM** (W. Buss '49). M.-L. (? Flora Zenor x ? Overture.) Quite pink. Perky flower of medium size, good form, closed standards. \$4.00
- PINK TOWER** (Muhlestein '48). E.-M. (Sister to Pink Formal.) Very large light pink. If you want size and clarity of color Pink Tower will produce them. C.O.C. '47. . . . \$4.00
- PINNACLE** (Stevens '49). E.-M. (Magnolia) x ((Gudrun) x (Lady Morvyth x Rangatra)). Clean contrast in a yellow anemona. Destined to be highly popular and much used in hybridizing. H.M. '49, A.M. '51. . . . \$10.00
- PLACERITA** (Miess '50). M. (Tobacco Road x Matula.) Rich golden-tan sprinkled with gold dust \$10.00
- PORT WINE** (Sass Bros. '50). M.-L. (45-47 x Starless Night.) White plicata with very heavy border of purple. Striking and commanding. H.M. '50 \$10.00
- PRAIRIE SUNSET** (H. Sass '39). M. (Sandlewood x Amitola.) Light peach, apricot, buff and gold. Fine parent. Dykes Medal '43. . . . \$1.00
- PREMIER PEACH** (D. Hall '46). M.-L. (Sister to Dream Girl.) Lovely salmon-peach. Fertile pollen, but a difficult pod parent. Splendid breeder. H.M. '46. . . . \$2.50
- PRETENDER** (P. Cook '51). M. Yellow standards, blue falls. A new race of "variegatas". Net \$12.00
- PRETTY PANSY** (Sass Bros. '49). E.-M. (? Bertha Gersdorff x Moonlit Sea.) Stunning! Different! Purple with striking white area. We think it highly novel and beautiful. H.M. '50. Net. \$5.00
- PRETTY QUADROON** (Kleinsorge '49). M. (Mexico x Tobacco Road.) Smooth, wide and full metallic copper-brown. Lovely queen. A.M. '50. Net \$10.00
- PRINCE OF ORANGE** (Kleinsorge '40). E.-M. (Far West x Naranja.) Fine orange-yellow. Superb blood for blends, oranges and reds. A.M. '44 \$.50
- PRIORITY** (Lapham '45). M. Reblooms ((Rameses) x (M. A. Porter x Jerry)) x (Red Ray). Red rebloomer. Makes tiny rhizomes and fine foliage. H.M. '48. Net. . . . \$2.00
- PRISCILLA** (Whiting '42). M. (Purissima x Blue Waves.) Very pure white. Should be studied for line breeding with other Purissima derivatives for blues and whites. A.M. '47. . . . \$.75
- PROSPECTOR** (Kleinsorge '50). M. Lovely flaring yellow with light area in falls which surely harks back to its progenitor Treasure Island. H.M. '51 \$10.00
- PURISSIMA** (Mohr-Mitchell '27). E.-M. (Argentina x Conquistador.) White. One of the truly great parents. No pollen, but an easy pod parent \$.50
- PURPLE FLASH** (Lyll '51). M. (Indian Hills x Sable.) Deepest red-purple. Quality. This will be a fine parent for deep and rich things. \$7.50
- PURPLE MOOR** (Lapham '47). M.-L. (The Red Douglas x Edward Lapham.) Large rich purple. Good blood for deep reds. . . . \$3.00

- QUECHEE** (Knowlton '50). M. (Prince of Orange) x (Redyen: Christabel x Tencyra). Handsome garnet red self that has superb substance and does not burn or fade. Top blood for red breeding. H.M. '50.....\$8.00
- RADIANT COMMAND** (Muhlestein '48). M. (Radiant x Royal Command). Bright neglecta. Lovely enmass. Holds promise for blues, purples, neglectas, amoenas and reds.....\$1.00
- RADIATION** (D. Hall '38). E.-M. (42-46: Golden Eagle x 39-62) x (Premier Peach). Tangerine bearded pink with an orchid cast when first open, but quickly fades to a pink self. Lovely. A.M. '50. Net.....\$10.00
- RAEJEAN** (Whiting '40). L. (Amitola x Copper Piece.) Late bi-yellow. Parent of Arab Chief and other rich things.....\$.50
- RAINBOW ROOM** (J. Sass '46). M.-L. (H. Sass' 50-36 x Matula.) Anthony yellow standards, falls a smooth blending of many colors including a metallic flush of lavender at the beard --and bordered color of standards. Delightful. H.C. '45, H.M. '47, A.M. '51.....\$7.00
- RAJAH BROOKE** (Norton '45). M.-L. (Matula x Garden Magic.) Lovely blended variegata. Good breeding material for blends and reds. H.M. '46.....\$1.00
- RAMADAN** (A. M. Harrison '46). E.-M. (San Diego x Mrs. V. West.) Tall, rich lavender-purple with blue-tipped beard. Has the form of Brunhilde. Imported from Australia. Scarce. Net.....\$5.00
- RANGER** (Kleinsorge '43). M.-L. ((Rebellion x King Tut) x (Purissima x Dolly Madison)) x (Garden Magic). Splendid smooth red. Good everywhere. Proving a worthwhile, though difficult, parent. A.M. '46.....\$1.50
- RARE MARBLE** (Muhlestein '47). M. (Bonanza x Tiffany.) Very good red trimmed yellow-ground plicata proving a wonderful parent. Tompkins had a series of plicatas from this that were good.....\$2.00
- RASPBERRY SUPREME** (Mitchell '50). M. (Orchid Lady x 0-90.) Raspberry-orchid with tangerine beard. Will be useful for breeding with the new colors from the pinks.....\$5.00
- RED GLEAM** (Lapham '41). M. ((Bruno x Sherbert) x (Sass 30-40: Redwing x King Tut)). Splendid red and a top-notch breeder. H.M. '41...\$.75
- RED MAJESTY** (G. Douglas '46). M. (Two sdgs.) Red, yellow heart. H.M. '48.....\$3.00
- RED RAY** (Lapham '37). M. (Red Sails x Jerry.) Red. Produces rebloomers.....\$1.00
- RED TORCH** (H. Sass '47). M.-L. (Prairie Sunset x Rouge Bouquet.) Tan standards, vivid ruby-red falls. Beautiful breeding for red and blends. H.M. '47.....\$1.50
- RED VALOR** (Nicholls '39). M. (Joycette) x (Red Robe: Morning Splendor x Cardinal). Tall beautifully finished red-purple. May have been overlooked as a parent. H.M. '40.....\$1.00
- RED WAVES** (Lapham '49). M. (Red Gleam x Christabel) x (Lights On). Red with accent on color. Producing top reds for Lapham, and has already produced Pacemaker and Big Time.....\$5.00
- REDWARD** (P. Cook '42). M. (From: Morning Splendor, Seminole and Cinnabar blood.) Fine low-growing red. H.M. '45.....\$2.00
- REDWYNE** (McKee '45). M. ((Christabel x Tencya) x (Janet Butler)) x (Red Comet). Really grand deep mahogany red. Quality plus. H.M. '45. Net.....\$3.00
- REGAL ROBE** (Craig '48). M. (Acropolis x Destiny). Very bright, rich, deep bi-violet. Should be a splendid parent for deep color and blues.....\$2.50
- RELENTLESS** (P. Cook '48). M.-L. (From: Ethel Peckham sdg. and intensive line breeding of: Morning Splendor, Seminole, Cinnabar blood.) Should be tops for breeding reds if used with large-flowered varieties. H.M. '50.....\$5.00
- REMEMBRANCE** (D. Hall '42). E.-M. (38-26, same blood as 39-62) x (May Day). Very large pink blend. Fine blood for blends, yellows and possibly shell pinks. A.M. '44.....\$1.00
- RENDEVOUS** (Tompkins '50). M. (Bright Lights x Tiffanja) x (Coronado). Yellow plicata bordered orange-red. H.M. '50.....\$10.00
- REVELLE** (Tobie '44). M. (Clovelly x Melitza.) Delicate pale salmon with flaring falls. Good blood for pinks and salmons. H.M. '45...\$.50
- RICH RAIMENT** (Craig '49). M. (((King Tut) x (Bronze Beacon x Sacramento) x (Mitchell 2-21))) x ((Mme. L. Aureau) x (Tiffany x Los Angeles)). Red plicata so unusual it will call you back again and again to view and study its interesting perpendicular lines. H.M. '50...\$.75
- RILLA GABBERT** (Carpenter '46). M. (E. B. Williamson x sdg. of Dominion heritage.) Beautifully formed jewel-like golden-tan blend with quality written all over it. H.M. '46.....\$3.00
- RIO ORO** (DeForest '42). M. (Salar x Far West.) Glowing honey-tan. Blood for oranges, blends and plicatas.....\$1.00
- RIO VALLEY** (Tompkins '51). M.-L. ((Three Oaks x Honeyflow) x (Copperclad)) x (Tobacco Road x Copperclad). Large ruffled golden tobacco brown with electric blue at tip of beard. Superb! And with this blood should be a great breeder for browns and rich blends. Net.....\$25.00
- RIPPLES** (Linse '51). M. (Ormohr x Snoqualmie.) Old lilac with olive at hafts.

- ROCKET** (Whiting '45). M. (Sandlewood x Naranja) x (Golden Spike: Happy Days x Matula). Brilliant orange-yellow bi-color—falls deeper, flushed orange-tan. Should be a top parent for oranges, blends and yellows. A.M. '47. **\$3.00**
- RODEO** (DeForest '47). M. (Tiffanja x Casa Morena.) Extremely large yellow plicata. Blood for reds, oranges and blends as well as plicatas. H.M. '49. **\$4.00**
- ROSA BARONE** (Lapham '51). M. (Bonny x Paradise Pink.) Soft pink over yellow. Excellent substance. Net **\$12.00**
- ROSE AMES** (Norton '50). M. (Florentine x Lady Naomi.) White with flush of lavender-blue near top and bottom of standards and falls. Lemon-white center and hafts. Not unlike Celestar, but a little more lavender color and this seems to hold quite well even in hot sun. Unusually different and a fine flower. **\$7.00**
- ROSE GLOW** (Muhlestein '51). M. (Mandalay x 45-12: E. B. Williamson x Prairie Sunset.) Flaring rose-red. Tall well branched stalks. **\$4.00**
- ROSE LUSTRE** (Ketchum '48). Smooth rose blend. **\$4.00**
- ROSEMARY** (Whiting '47). M. (Marisha x Morocco Rose.) Large orchid-pink. Blood for shell pinks. Net **\$1.00**
- ROSEMOHR** (C. H. Lewis '49). M. (Ormohr x Red Valor.) Mulberry with rosy tones. **\$10.00**
- ROSE SPLENDOR** (Kleinsorge '47) M. (Peach Glow x pink 322.) Blend of watermelon and copper. Good form and finish. H.M. '48. Net **\$3.00**
- ROSE TOP** (H. Sass '41). L. (Tiffany) x (Rameses x El Tovar.) Very large, fine, showy rose-trimmed plicata **\$1.50**
- ROSY RUFFLES** (C. Rees '46). E.-M. (Snow Flurry x Far West.) Rosy lavender-pink. Interesting blood for whites or use with Far West lines **\$1.00**
- ROYAL CREST** (Milliken '48). M. (Buechley Giant x The Black Douglas) x (Spring Meadow). Well branched dark blue-violet. Splendid blood for blues and blacks. **\$1.50**
- ROYAL SOVEREIGN** (Stevens '51). M. (Golden Majesty x Naranja x Redmayne: Mareschal Ney x Inspiration). Very rich deep orange-yellow. Falls seem velvety. Fully formed, the size, shape and substance are excellent and the color holds without fading or bleaching. Net **\$12.00**
- RUBY GLOW** (Schreiner '41). E. Int. (Grace Sturtevant x Graminea.) Rich red intermediate to start the season. A.M. '48. **\$.75**
- RUFFLED BOUQUET** (C. Rees '47). E.-M. (Snow Flurry x Sunburst.) Lovely smoothly finished bi-colored cream, standards slightly deeper. Should be a splendid parent for creams, whites and blues. **\$6.00**
- RUFFLED GEM** (Muhlestein '51). M. (Midwest Gem x D. Hall's 42-10.) Ruffled tcn blend. Quite different. All our garden visitors have wanted it. A breeder for ruffling. Should be useful for pinks. No. 46-41 B. Net. **\$4.00**
- RUMBA ROSE** (Whiting '49). M. (F2: Wabash x Fair Elaine.) Large new Neglecta—almost an amoena. We like its real quality.
- RUSSET WINGS** (Wills '46). M. (Old Parchment x Stardom). Glowing gold, copper and apricot skillfully blended in a large, beautifully formed flower. Splendid blood for blends, yellows and reds. H.M. '46. **\$3.00**
- RUTH** (Innes '50). M. (Ola Kala x Gold Ruffles.) Smooth rich yellow the size of Gold Ruffles with its deep ruffling. Impressed us as one of the best of the new yellows. H.M. '51. **\$5.00**
- SABLE** (P. Cook '38). E.-M. (Involving: Innocenza, Blue Boy, Cinnabar, Seminole.) Superb early black-purple. Proving a remarkable parent. A.M. '40 **\$1.00**
- SADEE*** (Baker '49). E.-M. (Purissima x I. curanitica.) Listed as white, it is really a lavender. Small, insignificant flower, yet the blood is unusual **\$5.00**
- SALAMONIE** (P. Cook '46). M. (Majenica x Pink Reflection.) Light peach-pink blend. Nicely formed. H.M. '46. **\$5.00**
- SALMONETTE** (J. Sass '46). M. (Dore x Matula) x ((Beau Ideal x Rameses)) x ((Amitola)) x (Miss Calif.)) Salmon or peach-pink with tangerine-salmon beard. Useful for hybridizing because of its "unrelated" blood. H.M. '47. **\$2.50**
- SALMON SHELL** (Muhlestein '50). M.-L. (Midwest Gem x D. Hall's 42-10.) Large salmon-pink self, even to the beard. Flowers sometimes water-mark, but it is proving such a remarkable parent for pinks and various new shades of by-products from these it will be widely used for the quality it passes on to his children and grandchildren—many of them being ruffled, due, no doubt, to the Midwest Gem blood. **\$7.50**
- SALOME** (Tompkins '50). M. (Chansonette x Tunisian Gold.) Large amber overlaid orange-red. Crimped or lacy edge. Net. **\$1.00**
- SALUSKIN** (Nelson '48). M. (Melitza x Flora Zenor.) Large pink. **\$2.00**
- SAN ANTONE** (Kleinsorge '47). M. (333 x 311 A.) Deep, glowing sand-brown. H.M. '48. **\$3.00**
- SARAH GOODLOE** (G. Douglas '49). M.-L. (Sister to Drum Major.) Deep maroon self. Heavy substance, fine stalk. H.M. '49. **\$6.00**
- SARAH LEE SHIELDS** (Graves '51). M. (Lady Boscawen) x (Snow Carnival x Cloud Castle). Beautiful ruffled pure white. H.C. '46, H.M. '51. Net **\$15.00**
- SAVAGE** (Craig '49). M. (?) Bronze-red suffused and blazed magenta. H.M. '51. **\$10.00**

- SEAFARER** (Buttrick '49). M. (The Admiral x Great Lakes.) Clear, smooth blue highly praised from every quarter. Beautiful form, finish and superb substance. Top blood for blues. H.M. '49\$12.00
- SEA GULL** (I. C. Smith '48). M. (Lav. sdlg. x Stella Polaris.) Large white as graceful as a sea gull on the wing.....\$5.00
- SEA LARK** (Muhlestein '46). E.-M. (Brunhilde x Sable.) Large violet-blue with flush of purple in center of both standards and falls making it quite distinct from any other iris. Has a strong tendency to produce this intensification, or flush of purple, in its seedlings. We think it will be highly useful as a parent. H.M. '47\$2.00
- SEDUCTION** (Cayeux '33). M. Arlinde x sdlg. of Ensorceleur.) Wide plicata lightly marked lavender. Splendid parent.....\$.50
- SELAH** (Nelson '48). M. (Thole white sdlg. x Show Girl: Rameses x Prairie S.) Light lavender-blue, gold heart. Different.....\$1.50
- SERIN** (Long '48). M. (Nepenthe x Treasure Ship) x ((Souv. de Loetitia Mischaud x Dainty Duchess) x (Dainty Duchess)). Canary yellow with no W. R. Dykes blood. Imported from England\$4.00
- SHANNOPIN** (Pillow '40). M. (Redwing x Yel. sdlg.) Yellow standards, pinkish falls. Parent of Maytime\$.75
- SHARKSKIN** (G. Douglas '42). M. (Cathedral Dome x Stella Polaris.) Smoothly finished white. Will throw tangerine-bearded pinks and whites if bred to them. A.M. '46.....\$.75
- SHERIFFA*** (White '42). E.-M. (Regelia derivative x "Onco hybrid.") Metallic deep mulberry. A.M. '45\$1.00
- SHINING WATERS** (Essig '33). M. ((Caterina x Marian Mohr) x (Calif. Blue)) x (Uncle Remus x Moca). Lovely dependable light blue. A.M. '36\$.50
- SIERRA BLUE** (Essig '32). M.-L. (Souv. de Mme. Gaudichau x Santa Barbara.) Very tall flaring blue. Grandparent of Blue Rhythm. Dykes Medal '35\$.50
- SIERRA SNOW** (Kleinsorge '39). M. (Purissima x Rameses) x (Far West). Lovely dependable white. Good breeding material for blues, whites and blends.....\$.50
- SILVER LAKE** (Kinish '49). M.-L. (Mary Clotilde x Great Lakes.) Non-fading pale blue. Delightful fragrance. Wonderful blood for blues. Net.\$6.00
- SILVER PLATTER** (Craig '50). M. (Acropolis x Destiny) x (Great Lakes). Huge shimmering blue. Tall\$6.00
- SILVER TOWER** (Mitchell '50). M. (Snow Flurry x Chivalry.) Beautifully formed porcelain. Deliciously scented. Has pollen.....\$7.50
- SIoux CITY SUE** (Whiting '47). M. (Matula x China Maid) x (Burmese Gold). Auburn-red with blue blaze in falls.....\$1.00
- SKY CHIEF** (Marx '50). M. (Purissima x Clara Noyes) x (Great Lakes). Very tall blue with pronounced silver edge. Net.....\$1.50
- SKY MAID** (M. Walker '44). E.-M. (Purissima x Pacific.) Lovely blue. Possibly overlooked as a breeder. Its breeding would merit consideration. H.M. '45.....\$1.00
- SKY RANGER** (D. Hall '48). M. (Bandmaster x blue sdlg.) Very tall, large, blue. Looks to have Snow Flurry blood. H.M. '49.....\$5.00
- SKY SONG** (Muhlestein '51). E.-M. (Anitra x Great Lakes.) Smooth, tailored light blue. Border iris about 30 inches tall. Producing wonderfully smooth blues and whites.....\$3.00
- SKY TINT** (Muhlestein '49). E.-M. (Sparkling Frost x Gloriole.) Slightly similar to Cloud Castle, but standards are very conic (closed). It is proving a remarkable parent with Sea Lark, other blues and whites. A really delightful light violet-blue. No pollen. H.C. '48....\$7.50
- SNOQUALMIE** (Brehm '38). M. (Wm. Carey Jones x Mitchell white sdlg.) Long a fine, dependable cream\$.50
- SNOW CARNIVAL** (Graves '42). E.-M. (Santa Barbara x Gudrun.) Very large flaring white. Superb breeder for whites, blues and creams. A.M. '44\$1.00
- SNOW CRYSTAL** (Wills '47). E.-M. (Sensation x Paulette) x (Narain). Large, lightly marked—beautifully formed plicata hardly expected from all blue breeding. H.M. '47.....\$2.00
- SNOW FLURRY** (C. Rees '39). E.-M. (Purissima x Thais.) Lovely white with a faint blue cast. Delicious orange-blossom perfume. Remarkable parent for many colors. A.M. '41....\$1.00
- SOLID GOLD** (Kleinsorge '51). M. Beautiful, deep, rich yellow. H.M. '51.....\$20.00
- SOLID MAHOGANY** (J. Sass '44). M. (City of Lincoln) x (38-13: ((Cardinal x Alcazar) x (H. Sass 29-34)). Deep, rich, glowing mahogany that cannot be overlooked in the garden. A.M. '47\$1.50
- SONG OF SONGS** (Crosby '50). E.-M.-L. (Gold Ruffles x Cream Gold.) Light yellow standards, white falls edged color of standards. All petals are edged with "chantilly" lacing and ruffling. Easy parent both ways. We think it will prove a remarkable breeder for many colors, including shell pinks. For it is descended from Sea Shell and Gold Ruffles who's sister 44-67 was a shell pink break. H.M. '50.....\$10.00
- SONRISA** (DeForest '42). E.-M. (Her Grace x Prairie Sunset.) Lovely pink blend with strong yellow undertones. Good blood for blends, whites, plicatas and possibly reds. H.M. '45\$1.00

- SORREL TOP** (Mitchell '43). M.-L. (Palo Alto: Sherrbert x San Francisco) x (Orloff). Medium sized yellow plicata with rose-brown edge. H.M. '47\$1.00
- SOUSUN** (Essig '45). E.-M. (Firefall, Kashmir White, Grace Sturt., Sombrero, Flame Bearer) x (Lilamani). Early lemon-yellow that starts the season. Very resistant to attacks of rot. H.M. '45\$1.00
- SPANISH FANDANGO** (Kleinsorge '51). M. Tall-er, richer Mexico.....\$15.00
- SPANISH PEAKS** (Loomis '47). E.-M. (Purissima x White Dominion sdlg.) x (sdlg.). Splendid white that is lovely when established. Easy grower. Most votes for A.M. '50.....\$4.00
- SPARKLING BLUE** (Grant '42). M. (Shining Waters x Aline.) Large flax blue. Net.....\$.75
- SPARKLING FROST** (Milliken '39). E.-M. (Purissima x Easter Morn.) Very light sparkling, frosty blue. Superb blood for blues and whites \$.50
- SPELLBOUND** (Linse '51). M. (Tobacco Road x Prairie Sunset.) New beautifully formed red with golden overlay.
- SPINDRIFT** (Loomis '44). E.-M. (Morocco Rose x Sea Shell.) Deep coral-pink with tangerine beard. Fine parent and even better grand-parent. H.M. '45.....\$1.25
- SPLASHES*** (See Introductions).
- SPORTING THOMAS*** (Muhlestein '49). E.-M. (Sport of N. J. Thomas.) Very dark purple. Wide of parts. Most fertile pollen imaginable, even on difficult hybrid lines.....\$1.50
- SPRING CHIMES** (D. Hall '42). E.-M. (Bermuda Sand x May Day.) Extra large russet self. A bit high branched, but lovely enmass...\$.50
- SPRING IDYL** (Lapham '39). M. (Eloise Lapham x Marian Lapham) x (Sdlg. of Wild Rose). Delicate apple-blossom pink—lovely for cutting. A diploid\$.50
- SPRING ROMANCE** (E. Miess '49). E.-M. (Melitza x Narain.) Waxy cream-white with frosty overlay and heavy infusion of aureolin gold at hafts. Very heavy orange beard. Should be highly useful for breeding creams, blues and shell pinks. Won Gold Cup at the 1948 Holly-wood show. H.M. '50.....\$10.00
- SPRING SUNSHINE** (Milliken '47). E.-M. (White Spire x Yel. Sdlg. 2384-5.) Simply huge creamy-yellow. Makes a tremendous show specimen. Produces seedlings with vigorous, wide foliage. H.M. '47.....\$2.50
- SPUN GOLD** (Glutzbeck '40). M. ((W. R. Dykes x Cream sdlg.) x (Mrs. V. West x Depute Nomblot)) x (Vert Galant x))) x (Depute Nomblot). The first "velvety" yellow. Dykes Medal '44\$1.00
- SPY SONG** (McKee '48). M. (Calif. Peach x Miobelle) x (Miobelle). Bright blend. Should be good with Campfire Glow, Lady Albright, and other rich blends. H.C. '46.....\$3.00
- S Q 72** (Loomis '48). E.-M. (Sea Shell derivative.) Light bi-colored pink on tall well branched stalk. I bless it every day for giving me Pink Formal and other good seedlings. H.C. '47. Net\$1.50
- STAG AT EVE** (Muhlestein '48). E.-M. (Chosen x Prairie Sunset.) Large russet-tan self sprinkled with gold dust. Some iris are wonderful breeders and produce quality seedlings. Stag At Eve is one of these—its brown seedlings are outstanding\$3.00
- STARKIST** (Tompkins '51). M. (Occidental x Ruth Pollock) x (Rare Marble). Beautifully formed yellow plicata with a fine stalk. Admired at Sioux City, 1950.....\$10.00
- STAR SHINE** (J. Wills '49). M.-L. (Hermitage x Hernani) x (Song of Gold). Deep cream stand-ards, falls white with faint blue in center and edged color of standards. In great demand. H.M. '49, A.M. '51. Net.....\$8.00
- STATEN ISLAND** (K. Smith '47). M. (The Red Admiral x City of Lincoln.) Tops in variegatas. Has blood for many colors including neglectas. H.M. '48, A.M. '51.....\$6.00
- STELLA VIOLA** (Snyder '45). E.-M. Big violet that is wide and bright.....\$2.00
- STEP UP** (See Introductions).
- STORM KING** (Nicholls '40). M.-L. (Mata Hari x Smolder.) Deep black-purple with widely flar-ing falls. A quality plant the result of crossing sister seedlings. H.M. '41.....\$1.00
- STORY TIME** (Muhlestein '49). E.-M. (The Red Douglas x D. Hall's 42-10.) Huge bi-colored burgundy rose (Amethyst). Wonderful garden value in clumps or enmass. Interesting blood for hybridizing. H.C. '48.....\$1.50
- STRATHMORE** (Morris '49). M. (Edward of Wind-sor x Hall sdlg. V 21.) A lovely apricot-pink with tall, well branched stalks. We are proud to offer a few rhizomes this season. Strath-more should be wonderful breeding material with other pink lines for blood refreshment. Net\$15.00
- STRATOSPHERE BLUE** (Lyell '46). M.-L. (Missouri x blue sdlg.) Smooth ultra-marine blue. Fine. \$2.00
- ST. REGIS** (Caldwell '47). M. (Birchbark x Great Lakes.) Slightly ruffled, smooth light blue. Su-perb blue and white blood. H.M. '48...\$3.00
- STYLISTA** (Mitchell '50.) M. (Mitchell O-136 x Salbach 39-42.) Self white with yellow shoul-ders and strong yellow beard. Medium size, but a real charmer.....\$4.00

- SUEZ*** (Schreiner '43). E.-M. (Wm. Mohr x Mme. L. Aureau.) Violet and white—showing clearly its two parents. Good grower. Rather easy pod parent\$1.00
- SUKEY OF SALEM** (Nesmith '46). M. (Buccaneer x Prairie Sunset.) Brown blend proving a fine parent. H.M. '46.....\$1.50
- SULTAN'S ROBE** (Salbach '45). M. (((Anne-Marie Cayeux x Alta Calif.) x (Happy Gift)) x (Miss Calif.)) x ((Gold Top x King Midas) x (Miss Calif.)). Old rose, copper and blue skillfully blended. Very wide of parts. Proving one of the great modern breeders for blends and rich reds. H.M. '46. Net.....\$1.50
- SUMMER SONG** (Nesmith '51). M. (Sunset Sere-nade x Sequatchee) x (Bryce Canyon). Glow-ing orange-gold. H.C. '50.
- SUMMERTIME** (Caldwell '49). M.-L. (Betty Nesmith x Jean Cayeux) x (Golden Majesty). Deep yellow highly praised by critics. Wonderful blood for blends, oranges and yellows. H.M. '49.\$4.00
- SUMMIT** (Stevens '51). M. (Sister to Mystic Mel-ody). White standards, deep yellow falls. Truly an achievement and a most exciting one. Net\$12.00
- SUNNY RUFFLES** (Waters '43). E.-M. (Gudrun x Jean Cayeux.) Nicely ruffled lemon-chrome yellow. Bred to ruffled things and Kleinsorge lines should give some unusual seedlings.\$.50
- SUN LAKES** (Suiter '51). M. (Blue Champagne x Sylvia Murray.) Top quality light blue with the shape of Sylvia Murray and the coloring of Helen McGregor, and the color holds. Will surely be a most wonderful parent with Ca-hokia, Helen McGregor, Dark Tower, Sky Song, Sky Tint, Azure Lake, etc. Net.....\$5.00
- SUNRAY** (D. Hall '50). M. (41-45: Invictus x Spring Chimes) x (Floradora). Lovely formed yellow that will be highly useful for hybri-dizing many colors, including pinks....\$7.50
- SUNSET BLAZE** (Kleinsorge '48) E.M. (343 x 333.) Deep red-flame-salmon. Simply stunning. Win-ner of the President's cup '49. H.M. '49, A.M. '51\$5.00
- SUNSET ROAD** (Muhlestein '50). E.-M. (Prairie Sunset x Tobacco Road.) Rich brown blend that will surely be useful as a parent with Sass, Whiting, Kleinsorge and Tompkins' lines. Net\$2.00
- SURRENDER** (Tompkins '51). M.-L. (Lamplit Hour x Pink Tower.) White with canary yellow flow-ing from the throat onto hafts and outer edges of falls. A pink cast seems to permeate the entire flower. Blood for many colors....\$17.50
- SUSITNA SUNSET** (Wilson '47). E.-M. (Prairie Sun-set x Casa Morena.) Rich blend. Top blood for browns, reds and blends.....\$2.00
- SUZETTE** (Knowlton '45). M. (Seduction x Tiffany.) Delicately marked light yellow plicata. H.M. '45\$1.50
- SWAN LAKE** (C. Benson '49). M. Birchbark x Great Lakes.) Crisp light blue self. Exceptional form and substance. First in seedlings St. Louis '46 C.O.C. '48. Top blood for blues and whites\$5.00
- SWEET MARIE** (Muhlestein '51). E.-M. (D. Hall's 40-32: (35-40: Dauntless x Rameses) x Lullaby) x Sister sdlg. No. 40-24). Very large orchid with tangerine beard. H.C. '50.....\$7.50
- SWEET TALK** (Tompkins '51). M. (Chansonette) x ((Rameses x Lullaby) x Moonlit Sea). Heather-pink flushed silvery-lilac with faint creamy-lemmon glow through the center of the flower. Net\$1.00
- SYLLABUB** (G. Douglas '50). M.-L. (Pink Cameo) x ((40-10 x Melitza x (Flora Zenor)). Tall, well branched pink self. H.C. '48, H.M. '50.
- SYLVAN BELLE** (Peck '43). M. (Gloriole x White sdlg.) White that does especially well in severe climates. Fine blood! H.M. '48.....\$2.00
- SYLVIA MURRAY** (Norton '44). M. (Great Lakes x Shining Waters.) Beautifully formed light blue with delightful fragrance. Easy pollen parent. A.M. '49\$1.00
- SYMBOL** (White '41). E.-M. (Naranja x Fiesta.) Large bi-orange yellow, falls brushed golden brown at hafts. Good blood for oranges..\$.75
- SYRINGA** (Lowry '47). M. (Sister to Mount Her-man.) Fine lilac-lavender. This and Lilac Lane almost stand alone in this color class. H.M. '47\$2.50
- TALLY HO** (D. Hall '49). M. (Fantasy x 42-46, sister to 42-10.) Shaded purple-fuchsia, tan-gerine beard, heavily striated, excellent form. Top parent for pinks and other new colors. H.M. '50. Net.....\$10.00
- TEA ROSE** (Whiting '44). M. (Matula x China Maid.) Neat rose blend. H.M. '45.....\$1.00
- TECHNICOLOR** (Whiting '50). M. (Garden Glory x Rocket.) Well branched, many flowered, brown-toned red. Not a strikingly beautiful flower, but one that will go down in history as a superb breeder for reds. Has already pro-duced remarkable seedlings for Mrs. Whiting, and 50-90 for Tompkins. H.M. '50.....\$15.00
- THE ADMIRAL** (D. Hall '41). E.-M. (Sensation x (Selene x Wambliska). Lovely violet-blue with great weather-resistant qualities. Parent of Seafarer. Should be tops for blues and whites, and line-breeding to Helen McGregor and her seedlings. A.M. '44.....\$.75
- THE CAPITOL** (A. Maxwell '44). M. (LaGloria x Gloriole.) Very large white with heavy orange beard. Queen of the Show Salt Lake City 1950. H.M. '46, A.M. '51.....\$1.00
- THE GUARDSMAN** (Grant '39). M.-L. (Winneshiek x). Unusual dusky mulberry, falls edged lighter. Commanding! Should be useful for neglectas and amoenas.....\$1.00

- THE KNOCKOUT** (Muhlestein '51). M. (Remembrance) x (Ming Yellow x Prairie Sunset). Rich yellow standards, falls lighter, brushed heavy yellow at hafts. Delightful in its charm and distinction. Will produce shell pinks when bred to them\$5.00
- THE MAD HATTER** (Lyon '51). M. (Ranger x Cordovan.) Deep rich mahogany red. Large and tall. With this blood it cannot miss being a superb breeder with Aria, Technicolor, Pace-maker and Burmese Ruby, to mention a few. H.M. '51. Net.....\$17.50
- THE ORIOLE** (Schreiner '47). M. (Spokane x El Tovar.) Variegata with rich gold standards, blackish-maroon falls. Striking.....\$1.00
- THE RED DOUGLAS** (J. Sass '37). M. (Sister to Red Wing x Cardinal) x (Joycette). Large red-purple. Dykes Medal '41.....\$.75
- THE SHOWMAN** (Muhlestein '50). M.-L. (Arab Chief x Bryce Canyon.) Brilliant, wide, red-copper. Similar in coloring to Sunset Blaze, but blooms after it. Rather high branched. A wonderful parent. H.C. '48.....\$5.00
- THE TANNER** (Muhlestein '51). M.-L. (Fortune x Tobacco Road.) Flaring mustard-tan. Quite different to anything we have grown. A wonderful parent both ways, but should be bred to something with height. 30 inches.....\$5.00
- THOTMES III** (Kleinsorge '50). M. Glistening golden-tan with bronze beard. A glorified Tobacco Road. H.M. '51. Net.....\$12.00
- THREE CHEERS** (P. Cook '45). M. (Wabash x ((Susan Bliss x Morning Splendor) x (Amoena sdlg.)) Tall, large neglecta of beautiful shape and proportions even though high-branched. H.M. '46\$1.50
- THREE OAKS** (Whiting '43). M.-L. (Sister to Tea Rose.) Striking brilliant rich coppery pink blend with blue flush in falls. Wonderful parent for blends and reds. A.M. '49.....\$1.50
- TIFFANJA** (DeForest '42). E.-M. (Naranja x Tiffany.) Lovely yellow plicata. Fast of increase. Should be very useful for oranges, plicatas and reds. A.M. '46.....\$.75
- TIFFANY** (H. Sass '38). E.-M. (King Tut x Morning Splendor) x (?). The first large yellow plicata and has been a remarkable parent. Some of its seedlings have a tendency to rebloom. A.M. '43\$.50
- TISHOMINGO** (Caldwell '42). M.-L. Large wisteria blue. A.M. '44.....\$1.00
- TOBACCO ROAD** (Kleinsorge '42) E.-M. (Aztec Copper) x (Far West x Jean Cayeux). Wonderful break in the brown class, and proved a remarkable parent. Breed to tall reds for quality red breeding. A.M. '46.....\$2.00
- TOSCA** (Benson '49). M. (Brunhilde x Gloriole.) Stunning ruffled lavender-blue with domed standards and wide flaring falls. Superb substance. Top blood, don't you think, for breeding? H.M. '50.....\$5.00
- TOP SCORE** (Salbach '48). M. Stunning new variegata. Yellow standards, orange-brown falls. Might be tops with Rocket, Orangeman, Orange Gem, Mexico and Gold Sovereign for oranges or Staten Island, The Oriole, High Command or Black and Gold for variegatas. Net\$3.00
- TRANQUILITY** (O. Fay '50). M. (Snow Flurry x Katherine Fay.) Superb milk-white with white beard. Splendid for wonderful blues and whites. H.M. '50. Net.....\$15.00
- TRANQUIL MOON** (P. Cook '48). M. (Pink Reflection) x (Cream sdlg. from Orchid-pinks and dominant yellows). Yellow standards, white falls bordered yellow. Good substance. H.M. '50\$7.00
- TREVA** (DeForest '45). M. (Rio Oro) x (Sandalwood x Amitola). Luscious golden apricot blend. Wonderful blood for blends, oranges and possibly reds. H.M. '46.....\$2.00
- TRULY YOURS** (O. Fay '49). M. (44-43: ((Rameses x Far West) x (D. Hall's 42-35)) x (Zantha). Huge, unusual yellow and white combination with heavy ruffling. Rather anxious to see what this and Song of Songs will produce. Because of its size and distinction it will be highly popular. H.M. '49, A.M. '51. Net.....\$20.00
- TRYAGAIN*** (Aylett). M. (Grace Mohr x Mohrson.) On the order of Suez. Fertile both ways. Net\$5.00
- TUNISIAN GOLD** (Tompkins '47). M. (Sister to Coronado.) Large golden brown, hafts antique brown. Producing wonderful seedlings. Top blood for reds.....\$3.50
- TWILIGHT SKY** (O. Fay '48). E.-M. (Pink Cameo x Floradora.) Nicely formed, clean dependable pink with tangerine beard. H.M. '50....\$5.00
- UTAH FIESTA** (Muhlestein '48). E.-M. (Fiesta x Dubrovnik.) Rich orange blend with strong lavender flush in falls. Lovely enmass, colorful\$1.50
- UTAH LAKE** (Muhlestein '50). M.-L. (Shining Waters x Great Lakes.) Large mid-blue self. Vigorous\$1.00
- UTAH SPECIAL** (Muhlestein '50). M.-L. (Old Parchment x Mellowglow.) Delectable, luscious, delicate blend of peach, apricot, pink and yellow. Beautifully formed, ruffled flower. Should have partial shade from extreme sun for it will fade. May have an upset number of chromosomes. At last has set pods for me by Java Jewel and a Pink Formal derivative. Charm personified\$7.50
- UTAH SUNSET** (Muhlestein '51). E.-M. (Honeyflow) x 46-16: sister to Sunset Road). The largest and smoothest blend we know. The hafts are so smooth we know it will be a boon to hybridizers. Its seedlings are very fine. Luscious in its smooth blending of onion-skin pink, buff and salmon tones. H.C. '49.....\$7.50

- VANDABETH** (See Introductions).
- VANITY FAIR** (D. Hall '51). M.-L. (Cherie x Fantasy.) Clean medium pink with deep red beard.
- VATICAN PURPLE** (Whiting '43). E.-M. (Missouri x Mata Hari.) Lovely purple. Delightful breeding for rich things. Grand form. Net... **\$1.50**
- VEISHEA** (Whiting '43). M. (Matula) x (Matula x Summer Tan.) Blend similar to Three Oaks. Splendid parent. H.M. '46. Net..... **\$.75**
- VELVET DUSK** (Schreiner '49). M.-L. (Sable x Schreiner sdlg.) Very dark purple with splendid sheen, finish and form. Net..... **\$3.50**
- VELVET KING** (Harned '38). M. (Bruno x Sherbert) x (Red Wing x King Tut). Splendid large red. Should be tops with Red Waves, Velvet Mantle, Technicolor, Aria, Gypsy Rose, etc., for reds **\$.75**
- VELVET MANTLE** (Clutton '50). H.-L. (Cheerio x E. B. Williamson.) Very tall bi-colored red. We knew it would prove a fine parent and we proved this by using it with both Deep Maroon and Burmese Ruby and have a fine array of numbered seedlings from these crosses. Velvet Mantle throws a wide array of colors from red to rich violets as might be expected from its pedigree. Worthy of a place in any breeder's collection **\$5.00**
- VICE REGAL** (Miles '46). M. (Directeur Pinelle x "Sir Fred Banting.") Like a piece of rich brocade. Deep rosy purple. H.M., A.M. '51. Net **\$1.00**
- VIGIL** (Wills '47). E.-M.-L. (Valor x Venus de Milo) x (Gudrun). Quality white that blooms over the longest period of any white we know. H.M. '47 **\$3.00**
- VIIPURI** (M. Williamson '40). M. (Sister to Wabash.) Ruffled amoena **\$.75**
- VIOLET SYMPHONY** (K. Smith '40). M. (Easter Morn x Violet Crown.) Wide, beautifully formed violet. Useful blood for blues, violets and whites. A.M. '43..... **\$.75**
- VISION FUGITIVE** (Wareham '42). M. (from sdlgs. from trojana x Dominion.) Very large creamy-white. H.M. '45..... **\$2.50**
- VISTA VERONICA** (Buss '50). M. (Blue Shimmer x Azure Skies.) Self orchid-blue identified by Dictionary of color as "Veronica". With such breeding how can it miss as a parent for blues and plicatas?..... **\$7.50**
- VOODOO** (Kleinsorge '48). M. (Mexico x Tobacco Road). Much richer Mexico-type. Falls very red. Should prove a parent for reds, blends and coppers **\$2.50**
- WABASH** (M. Williamson '36). M.-L. (Dorothy Dietz x ? Cantabile.) Long the standard Amoena. White standards, purple falls edged white. Leading parent for this color as well as neglectas. Dykes Medal '40..... **\$.50**
- WATCHFIRE** (Stevens '48). M. (Autumn Splendor x Copper Rose.) Copper with a red cast. Strong stalks **\$3.50**
- WAXY WHITE** (Muhlestein '50). M.-L. (Whiting 40-86: Matula x Midwest Gem) x (D. Hall's 42-10). White with gold beard, lovely flaring falls. May be highly useful for breeding blends, whites, creams and tangerine-bearded varieties **\$1.50**
- WESTERN HILLS** (Mrs. F. Allen Brown '51). M. and re-blooms. (? Radiant?) Golden mustard-tan and brown and the falls have a flush of peacock blue. Dependable re-bloomer and should be useful as a breeder in this class of iris **\$7.50**
- WHISPERS** (Linse '51). M. (Jasmine x Blue Rhythm.) Yellow and white bi-color, having the shape and quality, to a great extent, of Blue Rhythm.
- WHISTLING SWAN** (Waters '48). M. (Snowking x Sunny Ruffles.) Tall, slightly ruffled hardy white. Blood for ruffled things in creams, whites and blues..... **\$3.00**
- WHITE PARCHMENT** (H. F. Hall '49). M.-L. (Ming Yellow x Great Lakes.) Heavy substantced white bred from two great Dykes Medal winners. Royal blood for whites, creams and blues. **\$4.00**
- WHITE RUFFLES** (C. Taylor '47). E.-M.-L. (Snow Flurry x Princess of Brentwood.) Wide ruffled white with gold at hafts. H.M. '47..... **\$5.00**
- WHITE SATIN** (Suiter '50). M. (Blue Champagne x Sylvia Murray.) Pure white self of good quality in size, shape and substance. Marvelous blood here for blues and whites. A sister to Sun Lakes. Net..... **\$4.00**
- WHITE SENTRY** (Benson '49). M.-L. (Birchbark x Bruno.) Wide pure white of very heavy substance. Wonderful blood for whites, creams, blues and possibly reds. C.O.C. '48..... **\$3.00**
- WHITE SMOKE** (C. Rees '50). M.-L. (Snow Flurry x "Big Dipper".) Very large, beautifully formed white with blue-smoke cast. One of the last to fade at the end of the tall bearded season. We think it has promise as a white and blue breeder **\$5.00**
- WHITE SPIRE** (Milliken '44). E.-M. (Undoubtedly Purissima or Easter Morn blood.) Tall white that is a good parent..... **\$1.00**
- WHITE SPRITE** (Cassebeer '51). M. (And Thou x Azure Skies.) Pure white—no other color in it. Flaring falls—the whole flower ruffled and delightfully waved. Net..... **\$15.00**
- WHITE WEDGWOOD** (Grant '43). M. (Mount Cloud x blue bearded blue sdlg.) Large blue-white with blue-tipped beard. A.M. '45.. **\$1.00**
- WILD HONEY** (Whiting '46). M. (Jonquil x Gilt Edge.) The name describes it..... **\$1.00**

- WILLIAM A. SETCHELL** (Brehm '38). E.-M. (Purissima x Dolly Madison.) Gigantic purple with surprisingly good substance. \$.75
- WILMA VALETTE** (Craig '50). M. (Rich Raiment x Joseph's Mantle.) An over-all patterned fancy crimson-burgundy plicata of great size and very good blooming habits. Good blood for plicatas and re-bloomers. \$5.00
- WILLIAM MOHR*** (Mohr-Mitchell '25). E. (Parsiana x I. gatesii.) A sensational hybrid, and a good parent when it can be induced to set seed. Veined violet. \$.50
- WINDSOR** (Tompkins '50). M. (Brunhilde x Great Lakes.) Beautifully formed deep violet-blue with much of the charm of each of its two great parents. Should be wonderful for blue and violet breeding. H.M. '50. \$20.00
- WING COMMAND** (Tompkins '48). E.-M. (Brunhilde x Lilimani.) Highly finished deep blue-purple. Will be interesting to cross this with other Brunhilde derivatives; Windsor, Deep Velvet, Sea Lark and Lady Dozier. \$1.00
- WINSOME BLUE** (Horton '43). M. (Nene x Indian Hills.) Medium blue-purple. \$2.50

- WISH AGAIN** (See Introductions).
- W. J. MOFFATT** (Miles). M. (Sdlg. x Elsa Sass.) Large, tall, well branched fancy yellow plicata. H.C. '46. \$5.00
- YARCAND*** (White '48). E.-M. (Oncocyclus x T.B.) Blending of rich violets. Clearly showing its onco-traits. Unusual and lovely. H.M. '48. \$2.00
- YELLOW TOWER** (Muhlestein '50). M. (Painted Desert x D. Hall's 42-10.) Medium yellow wide and full in parts. Tall, well branched. Producing top quality seedlings with my pink-blooded Gold Ruffles line. Will breed pinks, salmon and orchids with tangerine beards. Net. \$2.00
- YUSSUF*** (White '46). E.-M. (Onco hybrid.) Lighter Mohrson-type with white areas showing through. \$1.00
- ZANTHA** (O. Fay '47). E.-M. (Gold Medal: Crown of Gold x Lady Paramount) x (41-22: Golden Hind x prob. Jean Cayeux). Simply huge, clear brilliant yellow. A wonderful exhibition stalk. Parent of Truly Yours. Winner of The President's cup and H.M. '47. \$4.00
- ZEBULON*** (E. Callis '42). M. (Ormohr x Sir Knight.) Large purple. Fertile both ways, even on rather difficult hybrid lines. \$1.00

DWARF BEARDED IRIS

- BLARNEY** (W. Welch '50). E.E. (Fiancee x "Fairy") x (Cook 1546: (Azurea x Pumila) x (Pumila)). The first of the "green" dwarfs to be offered. Should be a wonderful parent for many colors. \$3.00
- HEATHERBLOOM** (W. Marx '49). E.E. Heather-purple with rosy tones, orange beard. . . \$1.00
- LITTLE ELSA** (Muhlestein '48). E.E. (Brautjungfer: "Bridesmaid" x Bride.) Almost pure white standards, lemon falls shaded lighter toward bottom. Might be called a lemon-yellow amoena. From a distance enmass gives quite a white garden effect. Stems long enough to cut—about 7 to 8 inches. H.M. '48. \$.50
- OLIVE EVA** (Ethel Christensen '51). E.E. (Two dwarfs.) Blended variegata. Standards pale yellow finished lavender purple. Falls purple, lower eighth yellow. Styles yellow flushed purple. Has a strong tendency to re-bloom. Fragrant. Height 4 inches. \$3.50
- PETITE** (Horton '49). E.E. (Harbor Lights x sdlg.) Aconite violet (mauve-pink) bi-color. Lovely form, falls semi-flaring. \$1.50
- PRIMUS** (W. Welch '50). E.E. (Sdlg.: chamæiris x Sass dark ruby) x (P. Cook 1546, see Blarney). Brilliant variegata. H.M. '50. Caparne award '51. Net. \$3.00

- PURPLE BEAUTY** (Horton '45). E. (Susa x Negus.) Rich purple bi-color. Good sized flower on fairly tall (8 inch) stems. Heavy bloomer. \$.35
- SUN DROP** (W. Marx '49) E. (Sound Money x .) Brilliant, quite large, medium yellow that glows in the garden. \$1.00



SUNDROP

SPURIAS

Spurias belong to the beardless species. Their hard, strong, rhizomes are ideal for holding banks. They bloom after the tall bearded season has closed. Their orchid-like flowers are splendid for corsages or for bouquet work and arrangements. Here is an open field for hybridizers who desire to work with this species. Their disease resistance make them the easiest iris to cultivate.

(Spurias will be shipped after Sept. 1st—order these on a separate sheet.)

AZURE DAWN (Nies '47). (ocroleuca x Monspur, F2.) Blue-lavender with lemon-chrome signal patch. Net\$1.00

BRONZE BUTTERFLY (Brenan '51). (Bronzspur x Ochraurea.) Truly the most brown spuria I have seen. H.M. '51.....\$7.50

BRONZSPUR (Nies '41). (ochraleuca x Monspur, F2.) Blend of brown and yellow veined sepia. Splendid parent for many colors.....\$1.00

FAIRY LIGHT (Thorup '49). (Shelford Giant x yellow spuria.) Lemon-chrome. Flaring falls bordered one-eighth of an inch white. Very vigorous of growth and increase. H.M. '48 \$2.00

FAIRY WAND (Washington '31). Unusual blended tan\$1.00

GOLD NUGGET (Milliken '31). Rich golden yellow self\$1.00

MONNIERI (may be only a garden hybrid of I. ochraleuca.) Full light yellow.....\$.50

PASTORAL (Nies '43). (Bronzspur x Saugatuck.) Flaring falls of orange-yellow edged lavender. Standards yellow changing to lavender. Light lavender styles. Deep lavender crest (signal patch). Net\$3.00

RUSSET FLAME (Nies). Deep yellow with heavy brown shadings, and borders on the falls. Good keeping qualities. Net.....\$1.25

SAGATUCK (Nies '41). (Ochraleuca x Monspur, F2.) Standards lavender shading to yellow at the base; falls yellow, veined with bronze and bordered with lavender. Wonderful parent. Net\$1.25

TWO OPALS (Nies '46). (Fifth Symphony x Saugatuck.) Similar in coloring to Sagatuck, but ruffled and falls flare more. A.M. '50. Scarce. Net\$5.00

WADI ZEM ZEM (Milliken '42). Beautiful, large, clear cream. Net\$3.00

WHITE HERON (Milliken '48). Perhaps the giant of all spurias. The shape, size, and over-all quality is superb. Almost white with cream-yellow shadings at the center. H.M. '50. \$4.00

DORTHEA K. WILLIAMSON (Williamson 1918). (fulva x foliosa.) Hexagona hybrid. Not a spuria, but a lovely violet hybrid that requires somewhat the same growing condition. Net\$.50

KEY TO UNDERSTANDING THIS CATALOG

E., M., L.: Season of bloom; Early, Midseason, Late.

Varieties marked with "*" are descended from Regelia or Oncocyculs iris.

Hybrid: Cross of two distinct species.

C.O.C.: Certificate of Commendation—given by judges at A.I.S. shows.

H.C.: Highly Commended Award given by A.I.S. judges to iris (growing in gardens) not yet introduced.

H.M.: Honorable Mention. The first "counting" award an iris may receive on its climb to higher awards.

A.M.: Award of Merit may be given to only eight Tall Bearded and two "other than Tall Bearded" each year by A.I.S. judges. One year must elapse after the H.M. award before an A.M. may be won.

Dykes Medal Memorial medal given by the English Iris Society in memory of W. R. Dykes, who contributed, in hybridizing and writings, in monumental ways, to increase interest in iris. At present the Dykes Memorial Medal is given (or offered) in U.S.A., England and France, although no medals have been awarded in France for several years. This is the highest award any iris may achieve.

COLORS

AMOENA: Iris having white standards and darker colored falls—usually in shades of lavender or purple, although recently have come some yellow and white amoenas.

NEGLECTA: Bi-colored blue or purple with the standards very much lighter colored than the falls. (This is closely related to Amoena coloring, but the contrast isn't so great.)

PLICATA: Varieties having a distinct "stitching" or bordered edge on either standards or falls, or both, although recently have come varieties often referred to as "fancies" that are dotted, brushed or almost completely covered with color other than the ground color. We have yellow-ground plicatas or white-ground plicatas with markings in blue, purple, brown, red, etc.

BLENDS: Colors containing a lot of yellow blended with any number of other colors, reds, coppers, browns, pinks, lavenders, blues, etc.

VARIEGATAS: Yellow standards (or blended tan or brown) with very dark brown, purple or red falls.

OTHER COLORS: Other colors are self explanatory, although bi-colors are those containing essentially the same color with either standards or falls a dark color. (Tints or shades darker.)

SUBSTANCE: The thickness, heaviness or lasting quality of the petals.

TEXTURE: The finish of the flower, whether velvety, dull, enamel-like, silkie, etc., and this does not have a great deal to do with actual substance, although flowers with heavier substance may appear different in texture—show more depth or velvetiness than varieties with less substance.

VARIETIES AND HYBRIDIZING

Iris of all the various species have "taken the world by storm". Almost every grower of iris will some time or another feel the urge to make crosses, so we have untold thousands throughout the world who make a hobby of producing new and unusual colors in iris. Tall Bearded iris seem about the most simple to grow and hybridize, so it is little wonder their popularity is great, and that such strides for color and quality have been made. The pollen of the tall bearded does not blow about or have a tendency to self fertilize its own flower without outside help from either man or insect. The parts are so constructed, with a stigma on each of the style arms, above and over the stamens that carry the pollen, so that even though one may not remove all the stamens there is little possibility of self fertilization of this flower. If, however, there are heavy infestations of pollen thrips, or frequent visits from bumble bees, it is wise to pull off all the falls of the flower to be pollinated. Of course every hybridizer likes to pollenate a freshly opened flower, and in some instances such difficult parents as Wm. Mohr, and other hybrids, it is often advisable to pull open the flowers and to pollinate each stigma generously with the desired pollen before the stigmas have had any chance to dry. With such difficult parents, just mentioned, it may be necessary to do this late in the evening or very early morning. But with the average bearded iris the most fertile flower is usually the one that has opened normally and has just "ripened" its own pollen, if it has any. Some bearded iris stay receptive for only a few hours, while others may remain fertile into the second day. We find the early blooms give us the larger pods with more seed, and they usually are more strongly attached to the stalks and are less likely subject to accidents. It is wise, however, where much rain is experienced after crosses are made to remove the spath sheaths around the flowers' ovaries, and side branches, so that moisture does not hold there and cause the pods to rot or the side branches to fall off with precious crosses.

I believe almost every fancier knows the mechanics of making the crosses. I find a little box to hold half sheets of typing paper folded into "envelopes" to carry the stamens with pollen a very useful thing during the iris season, and pollens will keep (dry) in this manner for long periods of time, making it possible to use early varieties with midseason and late-blooming kinds, and one always has pollen available, whereas nature can, with rain or hail, make it impossible to find "dry" pollen when urgently needed. A pair of tweezers attached to a string tied about one's neck is absolutely essential. Next the tags to mark the crosses properly. It is impossible to remember very many crosses, and one may think, at the time, he can remember, but after a few days pass other things occupy (or seem to) the corner of one's mind where this information was "safely" stored. So strong paper tags that will not peel, wood-tree labels, aluminum or plastic labels are best to mark each cross. Often one tag will suffice to record a goodly number of crosses on one stalk. If every flower on the stalk is crossed the same the hybridizer may mark "all" on the tag near the name of the pollen parent used, or if another variety is used on the flower just below the tag he will write "Tobacco Road J. B." or if still another on the bottom branch he may mark: "Technicolor B.", etc. But it is most important to keep a careful record for it enhances the value of plants raised from the cross and will teach the hybridizer much in his quest for better iris; and although seedlings from a cross may not, any of them, turn out good enough to name, or introduce, their breeding may be such they will make remarkable parents, and only if we know their pedigrees may we use them wisely in our breeding plans. Almost every hybridizer looks ahead several generations for hoped-for results. Success may not come in a day, or in first generation crosses, often, for if producing what we want could be accomplished so easily I am afraid all our hopes would already be fulfilled and we would have little to strive for. Growing seedlings is no small task; it is work (and fun) and demands great patience, but a good seedling is ample reward for the long hours of work and waiting, and every iris fancier in the world may some day own your creation if it has good growing qualities and possesses the charm that would demand its wide distribution. But if you are isolated and do not have an "up-to-date" collector and you produce seedlings you feel are outstanding you should send these to other growers for trial and appraisal. And usually hosts for the American Iris Society annual conventions will gladly plant and grow your seedlings for this meeting of "top" enthusiasts, and if good your seedlings will be voted Highly Commended awards or commented on in the bulletins—then the next step would be their actual introduction to the iris loving public. What fun it is to register your first worthy iris. The cost for so doing is now one dollar, and the charge is made to eliminate, so far as possible, the registration of too many iris that are never formally introduced.

Let us consider those seed pods, however, for they will be guarded until their browning and cracking tells us they are ready to harvest. If any fancier should have to be away from home at the time seeds may ripen he will be wise to tie cheese-cloth bags around each pod to prevent the spilling and dropping of the precious seeds and the loss, naturally of correct parentage. However, ordinarily the fancier is home approximately two months after he has made the crosses and can gather the seed as it ripens and he puts it into paper bags, marking clearly the pod and pollen parent on the bag—or he can insert the breeding tag, if all the information is on the tag. Personally I only mark the pollen parent on the tag since each plant will be labeled in the garden, anyway, and it is a time-saving device. In warm climates the seed may immediately be planted, but in cold sections of the country it will be wise to dry the seed and plant later in the fall before winter sets in. One may choose any number of ways of planting the seed, but I find field-planting of the seeds most satisfactory, since there is no transplanting necessary, the plants suffer no set-back from transplanting

—and the only drawbacks are that not all seeds germinate the first year and there is considerably more close hand-weeding to be done. Cold-frame planting is very satisfactory, and seeds should not be planted deeper than one inch, and one-half inch is probably better, either in open field or in frames, but most important item is plenty of moisture in early spring when seeds are due to germinate, and the beds should be moist at time of planting and should not be allowed to become bone-dry at any time. Pot planting of seed may be alright for rare hybrid seed, yet pots have a tendency to dry and germination may not be good—but rare seed may be watched closely and there is a possibility some seeds may not germinate for a period of from 3 to 17 years (can you wait?). I have found Wm. Mohr seed has a strong tendency (if viable at all) to germinate the second year; the same is true of pure *Oncocyclus* seeds. Cold frames should be left open to the cold until February or March then closed, kept weeded and watered, and the seeds will germinate early—and it will be wise to transplant these out while they are very small—possibly the leaves will only be 2 or 3 inches tall and you will have these lined out where they remain to bloom (being sure to give them plenty of room and good sunny locations) and all this you will have accomplished (often wishful thinking) before the tall bearded have opened their first blooms. If transplanted in the heat of the summer they just sit and sulk. It is very important to have the ground moist when they are planted and to give them an immediate watering after they are transplanted. In the event some are spindly it might be wise to cover them a few days with strawberry boxes or other shields. The plants that grow large enough to show some increase will likely bloom the following spring. Occasionally seedlings will bloom without increase (these are often superb specimens) and are surely "lost chords" if they do not, later, send up increase. If the crown is high above the ground it might be well to build up the soil around them and to water regularly with Vitamin B 1 solution or liquid manure to encourage growth. I have found it wise to set pods on such fine seedlings and to use their pollen (if they have any) so that in event they do not send up increase they have not lived in vain. My 49-11 C pink is from such a lost-chord parent and the quality of its seedlings is rewarding.

When seedlings bloom the selecting will go on (and the hybridizing) and if an especially fine seedling is found it should be given special care and where there are two or more increase it should be divided carefully and lined out early in the summer, or as soon as its pods are gathered. In event of a rare seedling all or part may be sent to a more "friendly" climate to winter it until stock is more plentiful. It is a pity when a superb seedling dies the first winter after it has shown its bloom.

BREEDING FOR QUALITY

Like begets like! How often we hear this. It is true, but true, also, is the ability of some plant, or animal, to breed better than itself. The skill and thoughtfulness of the hybridizer also comes into play in the production of better iris, and new color forms. Once in a while some color-break appears and fortunate is the breeder who recognizes and uses it to advantage in his work. Sea Shell was such a break and David Hall's 39-62 (while not a pink with tangerine beard) was a break as a breeder and produced all or most of the 1942 pink seedlings that all "popped" at once in Hall's garden. Sometimes these breaks are not significant in themselves and it often takes two or three generations to bring forth real quality. Therein lies the challenge—the use of the right parents. Think of size, form, substance, stalk, vigor, and all the other good qualities you'd like to see in one plant. You may have to sacrifice some of these to attain color, but in the pedigree you should have the other qualities bred in and some of the seedlings may come with enough of these qualities scattered about that they may eventually all be combined in one fine variety, and once you get "it" in one seedling it will, through careful line breeding, come more often in future generations. Following are a few examples of what one might use. For sturdy stalks: Midwest Gem, Chantilly and Snow Flurry. For branching: Great Lakes, Golden Eagle and San Francisco. For vigor: Snow Flurry, Golden Eagle, Chantilly, Sousun and Coritica. For ruffling: Midwest Gem, Chantilly, Gold Ruffles, Party Dress, Chivalry and Snow Flurry. For substance: Chantilly, New Snow, Gold Ruffles, Pink Formal and Tobacco Road. Color is so complex we will cover this subject in the various color classes later. The hybridizer, however, must plan his crosses carefully to insure success, and as mentioned before, this may be a long-range project covering several generations. For instance, depth of color in the pinks was lacking. Where might this come from? The rich blends or tans carrying variegata or strong yellow bloodlines would be useful, however, first generation seedlings using them with these delicate shell pinks would yield few, if any, pinks so the hybridizer must use pinks again with some of these seedlings and we would suggest the yellows, light blends or tans with good form, width and substance. We might mention two sister seedlings that have been employed in hybridizing for better and stronger pinks: Matula and Midwest Gem. Matula has such strong color of its own, none of its seedlings ever came pink, whereas Midwest Gem will produce them when crossed to pinks, and its pink children make very fine parents as attested by my own Salmon Shell, which is not a strong color, yet produces depth of color in its offspring. Another example, from my own experience, Apricot Glory that boasts Golden Eagle blood twice and is a grandchild of Nylon (not a strong color) and rather amazing things are coming through the line—due, no doubt to the double blood of Prairie Sunset and the same blood also found in Nylon—all this coupled with the tangerine-beard factor that comes from the blood of Morocco Rose, and possibly W. R. Dykes, to be found in the pedigree a goodly number of times. What wonders the "melting pot" can do for our modern iris—and yet the surface has just been scratched!

Now we consider the various colors and some of the known good parents, and let us explore the possibilities of others whose bloodlines might indicate their value for breeding.

WHITES

White flowers are always delightful, and their importance in iris is manifold for they at once become useful as garden subjects and play, as well, a very important part in hybridizing for other colors (i.e., creams, blues). Hybridizers have been seeking a pure cold white without any other color in its makeup, and some of these have been achieved: Helen McKenzie and Priscilla being two of the most popular. Whites with warm, rich beards like The Capitol and Admiral Nimitz hold a special charm, while those with blue beards: And Thou and White Wedgewood have a decoration that might prove of great value in breeding blue iris with blue beards, purples with self colored beards, pinks with blue beards or other unheard of combinations. Purissima has long been a fine parent for good whites and now its child Snow Flurry is probably the most widely used variety for hybridizing (not alone for whites, but many colors) today, yet its children may very well be steps forward and of these we would recommend: New Snow (for whites and blues), Desert Song (for creams, whites and possibly pinks), and now Mr. Naylor's Moonlight Serenade. Glorioso, Lady Boscawen, Cahokia, Easter Morn and Azure Skies are all good parents. National White and Spring Sunshine are proving fine parents for white, although the latter is not in itself a white. Spanish Pecks is a good parent for whites as well as blues.

BLUES

They get bluer and better all the time. In the light blues Azure Skies, Cahokia and Helen McGregor are proving fine parents. My own Sky Tint has given some superb seedlings as has Sky Song and Mirror Lake. We look forward to the seedlings of Azure Lake crossed with the ruffled Dark Tower by Prof. Mitchell. Blue Rhythm, with the right choice of parents will produce good seedlings, surely, as will Chivalry, Sea Lark, Blue Ensign and Pierre Menard. Great Lakes is known for the quality it has produced and may still be of value, although we think its children, and grandchildren, are good steps forward—many of them being much smoother and entirely free of texture veining. Tompkins has a goodly number of fine blues in Courtesy, Windsor, Consolation and the 1952 introduction, Columbia. Mrs. Douglas Pattison, Elizabeth of England, Sun Lakes, Sky Ranger and Blue Blazes are all impressive. Surely Seafarer, Jane Phillips and other new varieties are going to prove their worth. We predict bright futures for Vandobeth and Gracious Lady in this color class. If the "hybrids" from Purissima x Capitola can be induced to good seed production some fine blues may come through them for they have lovely form. I had a pleasant surprise in blue seedlings from a Hoogiana seedling bred by Mary Sharp of Idaho crossed with Sky Song—size, form and substance of the flower were all excellent—height being the only drawback on a first year plant. Sky Song x Cahokia produced the bluest pure T.B. to date for me, yet Blue Rhythm x Sky Song gave several fine blues. Pierre Menard has a strong tendency to throw its own coloring and form, while its sister Cahokia produces the better medium and light blues when bred to New Snow, Helen McGregor, etc.

YELLOWS

Perhaps the most important color in the garden for accent. Surely the focal points in any planting are the yellows. We cannot have too many of them, and there is room for new and better kinds. We have recently added depth of color through the use of Naranja, Ola Kala, Rocket, Goldbeater and a host of W. R. Dykes' derivatives. Moontide and Orange Gem from McKee are producing rich seedlings. Zantha and Golden Eagle for size, Gold Ruffles for the ruffling, form and substance it gives its offspring. Golden Ruffles is a bit difficult as a parent, but has lovely flowers. Gold Sovereign and Lodestone will prove fine parents. Fabulous Kate for size and a little different form could be a good parent in this color as well as for blends and pinks. We liked Prospector, the ruffled Ruth, and the large flaring light yellow Sunray. Some of the older yellows like Golden Spike, Berkeley Gold, Treasure Island, Admiration, Damascus or Orangeman will be splendid breeders.

BLENDS

There are many good blends, and they, perhaps, prove the most interesting for close-up study and appreciation. Who among iris lovers does not love to study the subtle blendings found in Grand Canyon, Three Oaks, Bronzed Copper, Utah Special, and Lady Albright? Campfire Glow produces its quality and rich coloring so strongly in its children the hybridizer will have a difficult time selecting the one or two outstanding among them. It will give quality and richness to other colors, including reds, coppers and purples—giving them, as well, perhaps, that electric "blue flash" on the falls. And Bronze Brocade you'll like! Utah Sunset has the smoothest haft of any blend we know.

TANS AND BROWNS

These are often considered with the blends, and most of them are derived from or through their bloodlines. The Sasses, Mrs. Whiting, Dr. Kleinsorge and DeForest have been especially successful in this class, and a blending of the best from all these hybridizers is producing some great iris. Prairie Sunset, Matula and Midwest Gem have been important from the Sasses, while Dr. Kleinsorge's great contribution, Tobacco Road (descended from Jean Cayeux, through Far West) is now back of almost every fine new tan or brown. Mrs. Whiting's things show great richness of color due to Matula blood, primarily. Her Lodestone (while a yellow) will produce striking browns, reds and blends. Wills' Russet Wings and Carpenter's Rilla Gabbert should be useful here. We fell hard for DeForest's Golden Plover. Thomes III is, indeed, a glorified Tobacco Road and we like Chamois, Amazon Tan, Golden Russet, Honeyflow, Pretty Quadroon, Cordovan and the brighter Good News.

Brown Stain is a good color and a fine garden subject. Casa Morena a good parent as attested by its striking child, Argus Pheasant. Stag At Eve is a fine breeder for Golden Tans. Utah Sunset has such smoothness of texture, and passes this quality to its seedlings, that it is proving a superb parent for blends and tans, but it is so large care in selecting smaller, trim varieties to be used with it should always be considered. Utah Sunset, and its sister, to be introduced next year as Glistening Copper (No. 48-72), were the outstanding new parents I used in blends and browns.

ORANGES

We have sought orange coloring through the deep yellows and brilliant blends, and considerable richness and depth of color have come as attested by Rocket, Orange Gem, Gold Sovereign and Royal Sovereign, but the true oranges are coming from the Seashell and Flamingo pinks. Last year's seedlings gave a host of brilliant oranges from these lines—nearly all involved either Pink Formal, Apricot Glory or Salmon Shell coupled with lines of the first two. We are sure Melody Lane, Hi Time and Premier Peach will be highly useful for this color, and look forward to their use with the 1951 seedlings of our own lines. Seedlings involving Melitza will be useful here, but we warn against the long falls that might result from the line, so use of more flaring and shorter-falled varieties should be employed.

CREAMS

Good creams have not been plentiful, and we have not demanded many in the garden picture, although they prove most useful for foils with the very dark and gaudy colors. Patricia Joyce, Desert Song, Amandine, Snoqualmie, Carved Ivory and Ruffled Bouquet have been good. We now need only to refine certain qualities and to add ruffling to bring forth new and acceptable sorts for our gardens. Use of yellows and whites in breeding for creams is almost taken for granted.

YELLOWS AND BI-COLORS

These might take the place of creams in the garden picture, although most of them have had yellow standards and white falls bordered yellow (i.e., Tranquil Moon, Cream Gold, Song of Songs and Truly Yours). And now we have a new race of plants with white standards and yellow falls that have sometimes been called yellow amoenas, but whatever they may be their charm and new color arrangement is novel and charming. Pinnacle, Fair Day, Gladys Moncrief and Lamplit Hour were the first of these. Summit and others are coming on the horizon. These are going to be useful parents with the Shell Pinks. Already we have heard of Pinnacle having produced first generation pinks when used with them.

MULBERRY

A neglected color class, but nevertheless we have some fine ones and room for other good additions. Mulberry Rose, Elmohr and Master Charles are the good standbys in this color. Vice Regal should not come here, perhaps, since its coloring has more "red" in its makeup, as does Michael Barton. We found Velvet Mantle threw a goodly number of rich mulberry seedlings crossed with Deep Maroon (49-18 A). We think our Mohr Glorious a richer, heavier substantiated Elmohr type, will be a splendid addition to this color range in a border plant, as will the darker Concord Velvet.

PLICATAS

So varied have the plicatas come the last ten years there is one to please every lover of this pattern. The white-ground plicatas, precisely marked with blue, violet or purple, have come a long way from old Madam Chereau and Parisiana, and some are, now, very striking garden subjects and superb show specimens. We like Aldura very much, and its seedling Blue Rim is a good show specimen. Blue Shimmer we like for its stunning color and clean contrast, but it lacks the substance found in Aldura, however, its seedlings are proving rather good. DeForest has come up with a fine array of plicatas: Gay Border, Tiffanja, Rodeo, New Hope, Caroline Jane, Gala Finale and others. We like Fay's Fire Dance, Tompkins' Starkist, Masked Ball, Firecracker and our own Rare Marble. Craig's Rich Raiment offers an unusual pattern with a richness of coloring. Daffy has no two petals alike and has a strong tendency to produce seedlings with this characteristic. Joseph's Mantle gives the added charm of re-blooming, as does Mrs. Kerr's 1952 introduction, Echo Valley, and we still like its counterpart, Minnie Colquitt. Snyder's Insignia is a wide globular bloom that will be popular when stock permits wider distribution. In the cheaper varieties Mount Timp, Tiffanja, Rose Top and Tiffany are still popular. If you like refinement and a bit of ruffling in the buds Melody Lace will please.

LEMON YELLOWS

We mention these after the plicatas for they have come through them. Elsa Sass was the first and is still good. It is a super-parent for plicatas when bred to them, or for lemon-yellows if used in that direction. We are testing Mrs. Allman's plicata, Happy Talk out of Elsa Sass x Coritica, for the slides of it were so appealing. Belle Amie and Mattie Gates are somewhat similar in that they carry a white area in the falls, yet they are quite distinct. Marion Vaughn has not been large or tall for us, yet we hear of fine things from it crossed with Mattie Gates. Our own Cool Lemonade is neither large or tall, but since it starts the tall bearded season (together with Mount Timp) it always seems to endear itself to us year after year. DeForest's Clear Sailing impressed us most in this color range because of its good height, fine branching and beautiful flaring falls—it will be tremendously popular. We rather think these lemon-yellows will cross well with such things as Celestar

and Rose Ames, and, of course, with other plicata derivatives like Jake and Snow Velvet. Their purity of color is so refreshing. They might be employed with coarser-hafted whites, or yellows, to improve finish. Actually Moonlight Serenade does not go here, although when it was first exhibited at Salt Lake City in 1949 I thought it was a very light lemon-yellow self. It is really an off-white with a warm (or should we say cool?) lemon-yellow cast due in great part to the center of the flower, the beard and the under sides of the petals. But as an exhibition flower it will be difficult to surpass. We know, too, it is going to prove a remarkable parent for many colors: whites, blues, violets, creams and superb PINKS.

REDS

Yes, they, too, have come a long way. True red has not yet been achieved, but that goal is not far distant with such fine new varieties as Color Sergeant, Ebony Echo, Big Time, Pacemaker and Redwyn. Tompkins' new reds out of his Manana (a child of Aria) are probably the closest approach to red. His 50-90 is from the pollen of Technicolor and as a host parent we think this variety is going to be really great, and it branches very low and carries a great many buds. For size, height and branching Color Sergeant, though, impressed us greatly. Lapham's Red Waves and Lights On are proving fine breeders. We know his careful breeding is going to yield other advances in this color for few breeders have stayed with one color so long as Lapham and few know their goal and parents as he. We can look for a host of "hot" reds in that fancier's plots. Not red in themselves, but known carriers, we would recommend using Lodestone, Rocket, Damascus, Moontide and Baghdad. But we would use Apex, Orelio, Garden Magic, Garden Glory, Burmese Ruby, Red Valor, Cape Bon, Parowan, Casa Morena, Tobacco Road, Ranger and Velvet Mantle. Burmese Ruby gave me a host of fine reds in various crosses. I do think, however, it will be best used with brown-reds like Technicolor and Aria, rather than purple-reds. Although short our new introduction, Deep Maroon (No. 49-18 A) has that same richness, smoothness and quality of its parent, Garden Glory, and it passes these qualities to its children. It, too, will better combine with reds containing a lot of yellow in their makeup. It crossed on Velvet Mantle produced very rich, smooth things, and 3 or 4 truly dwarf varieties of a richness of color seldom seen—frankly, I am hoping they may remain dwarf—there will be a place for them, since their blooming season coincides with the tall bearded.

DEEP PURPLES AND "BLACKS"

Ethiopia Queen, Dymia and Sable were among the first. Black Forest and Gulf Stream came later, as have many of their derivatives, and the class is growing by leaps and bounds. Dymia has contributed a self-colored beard to Gulf Stream and in that respect it will be a fine breeder as already attested by Dr. Franklin Cook's 1951 Introduction, Northwestern (Blue Glow x Gulf Stream) and Schreiners have contributed Black Forest and now Black Diamond. Fay gives us Black Hills and Mrs. Nesmith, Black Satin. Not to be overlooked as breeders we should consider Storm King and its three children: After Midnight, Night Life, and Night Spot, which has height, branching and good flaring form to offer. Sasses have contributed Ebony Queen and DeForest's Envoy looks good. Down East and Dusky Night will be fine breeders. Paul Cook's work in this color is almost like Lapham's in reds. We bloomed his Sable Night last year and for sheer blackness in the falls it would be difficult to imagine anything in the floral world more black. Sable Night will be introduced this year. It has Sable in its pedigree twice, as well as blood of Modoc that stems from Dominion heritage. We look forward to the second blooming of Ben Holt, when it should be at its best. Night Life, though, gave us the blackest and heaviest subtended dark iris we had last year when crossed with a Black Forest x After Midnight seedling. We look forward to future bloomings of this seedling. Fothergill of London has sent us his Egyptian Night (Black Forest x After Midnight) that has received high praise abroad and was selected for trial at Wisley.

PINKS

How the fancy has taken these to its heart! Perhaps the long years of waiting for their advent make them the dearer and more startling. Since Melitza and Flora Zenor, then Overture and Dream Girl, this color and quality have come a long way. Loomis had, undoubtedly, the first break in Sea Shell (a half sister to Morocco Rose) then Hall, through careful line breeding, brought out a new strain of pinks in 1942, which undoubtedly came through the concentrated use of Morocco Rose blood. Flora Zenor came from Dore (a yellow and white combination) and it would be interesting if we knew the other parent. But Flora Zenor has been quite a disappointing parent and grandparent due to its size and unclear hafts. I would warn the beginner to avoid its use. Flora Zenor's strong faults seem to carry through generation after generation, and it would take a braver man than I to carry on long enough to reach the ultimate goal we all seek in pinks. Melitza, however, on the other hand, is a good grandparent and an even better great grandparent when combined with good pinks of the Loomis and Hall lines, and perhaps some of the richness found in the Sasses lines through Prairie Sunset, Matula or Midwest Gem. Prairie Sunset with the shell pink line seems to work wonders, as attested by Pink Formal, Cloudcap, Gay Orchid and Apricot Glory, and, of course, this same blood appears in the pedigrees of all of Hall's new pinks as well as my Salmon Shell and Pink Salmon, and might account for the wide range of lovely shades found in the seedlings from these irises. Last year's blooming revealed Salmon Shell to be such a superb parent, we recommend it highly for pinks and the associated new colors. Because of the Midwest Gem blood the stalks are usually heavy and strong, the branching better than average among its seedlings. Party Dress

gave the quality we had anticipated because of its wide hafts and fine substance. It produced the longest and brightest beards in its seedlings of any of the new pinks used. Crossed with Pink Formal, Salmon Shell and Apricot Glory, Party Dress produced a wide range of lovely colors. With 49-11 C a host of fine, smooth flowers, many of which were as heavily ruffled as their mother. Considerable ruffling came, too, from Salmon Shell, as might be expected because of the Midwest Gem blood. We quite liked the very large and tall Strathmore with its smoothly finished salmon-pink flowers nicely spaced on well branched stalks. Cherie has been a favorite of ours for its lovely form, and Twilight Sky and Pink Cameo consistently good. Pink Sensation is excellent with quite good form and substance. Dolly Varden has the fulvus overlay of color that gives it added interest. Its size and form are very good. We think Heather Rose and Mary Randall are going to be of great interest to hybridizers, as will, of course, all of Hall's new pinks and their bi-products. We like the quality of the pinks that have come to us through Gold Ruffles' lost chord child, No. 47-72, that crossed with pollen of Pink Formal gave us 49-11 C. We look to blooming Paradise Pink really well. It is difficult to judge a first year plant. It has good size, width and other fine qualities, so we are sure it will prove a fine parent. We recommend it highly and in it lies new blood for added vigor. We must seek out new blood and that is why we think Party Dress, Salmon Shell and Apricot Glory have much to offer the hybridizer; we know from our experience that crossed with our own lines they are producing quality. Fortunately my pinks all stem from both the Hall and Loomis lines, so they blend well with the iris from these hybridizers. We are, however, most anxious to get Moonlight Serenade into producing pink seedlings. A sister to Cream Gold crossed on Yellow Tower gave us perhaps the most unusual new color-break last year—an odd chartereuse-salmon with a self beard, No. 51-61 A. We have employed Chantilly together with Gold Ruffles and other ruffled pink lines with good results in pink breeding. Our new Clara B should be a fine parent here, unfortunately its seed has not yet been planted where I have employed it with pinks, but with ruffled things the ruffling came through very pronounced and, we might add, they were delightful.

AMOENAS

Wabash has set a standard for this color class, and is being used widely in the quest for better amoenas. Recently Extravaganza (a near amoena) made its appearance and has been found a useful parent for this color—already introduced are Helen Collingwood, Gaylord, and Criterion and others are on the way. Amoenas have been rather difficult parents and when induced to seed these have not always germinated well. Evidently some new blood is indicated for vigor. This may come from Maytime, Rumba Rose or the introduction of some vigorous outside blood—possibly neglectas or blue bi-colors will be useful here. My own Mist Glow is proving a good parent and Step Up, being introduced this year, is a "step up" on the ladder, for it has a bit more contrast and slightly smoother hafts. M. D. Wallace of Orem, Utah, had a surprisingly good amoena from Golden Eagle x Wabash, which we hope to see again this year. It has good size and the shape of Golden Eagle. Nine Hearths does not ordinarily have pollen, but we found some last spring and it proved very fertile. If it can be induced to parenthood it will surely produce fine seedlings in amoenas whites, and other colors. Perhaps some of the new bi-colors from the shell pinks will be useful here—those showing light pink standards and deep pink or orchid falls. Shannopin being the parent of Maytime might be used. It has a strong tendency to throw its own color and quality, so it should be used with something good in size, shape and smoothness of hafts. China Maid being distantly related to Wabash through Lent A. Williamson might be useful and would surely contribute size and smoothness. The same might be said of Hall's "Flamingo pinks" that come through the same blood by way of Dolly Madison. Three Oaks, Pink Formal, and Loomis' Sea Shell derivatives would carry some of this same blood and may be useful. Surely there is an open field here. Geddes Douglas' fine article in A.I.S. bulletin No. 121 will be of help and inspiration to all hybridizers working on this class.

VARIEGATAS

Perhaps much of our progress in lovely new colors came through the use of the species *I. variegata*, and surely the amoenas owe their origin to this color, as do the yellow plicatas, rich blends and brilliant yellows. City of Lincoln was long the standard of variegatas, but now, perhaps its child, Staten Island, holds this position, but there are other good ones: Gypsy, Black and Gold, High Command, The Oriole, Top Score, Red Torch, Rajah Brooke, Mary Vernon, Mexico, Aztec Indian, and Marry Ellen. Extravaganza is proving a superb parent for this color when bred with things like Gypsy, Rajah Brooke, and Mexico. Red Torch should be a fine breeder, and needs only to be bred to something with height and size; its falls being about as red as anything it may be a fine breeder for reds, too.

OTHER COLORS

So many new colors are coming to the fore these days we cannot pass them by. Char-Maize would fall in this class, as would many of the "hybrid" derivatives, such as Persian Pattern. The Shell pinks are throwing a wide variety of colors, as mentioned before: orchids, salmons, oranges, fuchsias, and purples—all with various kinds and shades of brilliant beards from self to very red-tangerine and "red". We have some plicatas with tangerine beards, and, of course, these new chartereuse-salmons with self beards will be something different, and we think DeForest's Frances Kent falls in this category.

HYBRIDS

True hybrids are the result of a crossing of two distinct species within the same family of plants or animals. These are very often quite infertile (being mules for the most part) due to an upset number of chromosomes. Wm. Mohr is a classic example of a hybrid, and has been much used in the quest of better iris and although it produces very few seeds its children have been notably good—Elmohr having won the Dykes Medal. Capitola, another seedling of Wm. Mohr having a hybrid as its pollen parent, is a break in that when it has pollen it is quite fertile and from it have come Lady Mohr, and a host of good blues and some browns and blends at the hands of Prof. Jory. Capitola, however, will not produce pollen under some garden conditions and usually must have good drainage and will have more pollen during very dry and warm weather. Joppa Parrot is a true hybrid and has the most potent pollen of any such hybrid we know, but it is so difficult to grow I am sure only those in very favored locations, or fanciers with special talents to grow the difficult, will have any success with it. Ib-Mac has very fertile pollen and has a strong tendency to produce the "onco" signal patch and onco-shape. It is not a vigorous or heavy blooming plant, however. We have grown thousands of seedlings with complex pedigrees involving Wm. Mohr three and four times, but for the most part they are strictly pogon (T.B.) in appearance and had lost the charm and personality that sets the true hybrids apart, or the quality that marks Lady Mohr as different. The hybrids from the exotic *Onocyclus* are quite distinct from the *Regelia* species that are smoothly finished rather than intricately veined. Hybrids from the *Regelias*, such as Hoogiana, usually are quite fertile both ways. Hoogie Boy is a good pollen parent and will set pods, as will Hoogsan. The *Regelia* derivatives have vigor and fast increasing qualities to pass on to tall bearded iris.

RE-BLOOMING IRIS

There is growing interest in this class of iris. Some of the dependable re-bloomers have come quite by accident while others have been planned for. The Sasses were among the first to produce and name some of these, among them Autumn King and Autumn Queen. Dr. G. P. Brown is now working extensively in these, and they are becoming increasingly more dependable. They do require a slight dormancy period after blooming then an extra feeding and regular watering to insure off-season bloom. The color range is widening in these, too. Lapham has some breaks with tangerine beards that will add interest, although he is not working in this field, and I believe his friend Charles Wise is taking them over and has introduced several into commerce. Pink Lace has a strong tendency to re-bloom, as does its parent Flora Zenor. Tiffany's children have a remontant tendency as witnessed by Gibson Girl and Mount Timp. Craig's Joseph's Mantle is very dependable. Mrs. F. Allen Brown's Western Hills, Sunset Serenade, China Maid, Priority, Ethel Peckham, White Alone, Radiant, and Autumn Flame are a few worthy of a place in any collection. Gay Orchid, Purissima, Sultan's Robe and Red Ray are all breeders to consider for this quality. And we are happy to introduce Mrs. Kerr's Echo Valley and we think you will marvel, with us, at its pedigree, but it is as lovely as any pure tall bearded iris. Some of the dwarfs have a re-blooming tendency. It may be some of these may be crossed with tall bearded iris to produce a race of re-blooming intermediates. Speaking of Intermediates, here is a class that holds promise to any hybridizer with imagination and patience. Paul Cook has released some new ones and there will be others, no doubt. These will close the gap between the early dwarfs and the later blooming tall bearded. Some that prove fertile may open new vistas of color and form.

FRAGRANCE

It is just natural to press a lovely flower to one's nose to catch some delicate perfume or fragrance. Rare are the flowers without some odor. Iris have almost as many fragrances as their colors. Some, however, have little or no fragrance. Iris of Ricardi, *I. mesopotamica*, and *I. pallida* blood seem to carry some fragrance. I'm sure every iris lover has noted the distinct grape odor found in some of the old-time iris, including *Pallida F. Variegata*. Snow Flurry has fragrance of orange blossoms, while Mary Colotilde has a distinctly spicy odor. Here are a few parents one might consider in a "joint" program to get fragrance coupled with beauty: Shining Waters, Song of Gold, Pink Ruffles, Violet Symphony, Sylvia Murray, Katherine Fay, Gloriele, Purissima, Misty Gold and, of course, those mentioned above.

VIGOR

Here is a quality we may and should consider in a long-range program. It would hardly "pay" any modern hybridizer to go back too close to *I. mesopotamica* or Ricardi, for instance, due to the tenderness of this species. Purissima, Snow Flurry, Sensation, Gloriele and Morocco Rose are about as close to the tender species as we would advise fanciers to go in quest of the blood, and greater vigor might be assured to use more recent introductions, since hybridizers have been carefully mixing and blending lines to insure more vigor and winter-hardiness. We can strongly advise the use of Golden Eagle for vigor, fast increasing qualities, and good sized rhizomes. Sousedun is very resistant to any kind of rot as is Pink Formal, but some of the latter's children are not so resistant, due, no doubt, to *I. mesopotamica* blood.

IRIS ILLS

Almost every known form of plant or animal life is subject to some ills or diseases. While iris are generally quite hardy and prolific, bearded iris are subject to several kinds of rot: i.e., Leaf Spot, Bacterial Leaf Blight, Soft Rot, and Botritis (or winter rot). Mustard-Seed Fungus, while not a true form of rot is controlled by cleaning away the affected parts, being sure to destroy all the spores

(in the form of mustard-seeds) and the leaves—washing the cleaned parts with a strong solution of Potassium Permanganate. Scorch, too, is not a rot disease, but rather a "mystery ailment" that causes plants to turn yellow and eventually the leaves all wither away, as do the roots, leaving firm rhizomes that remain so without any desire, it seems, to grow. Various methods of treating these rhizomes have been employed: exposing to sunlight for several days, dipping in solutions of Potassium Permanganate, Lysol or Sulphathiazol. However, unless a plant is rare and very valuable it should be destroyed. Scorch may be a "starvation" disease, or a virus. Little is known about it, although it is more prevalent, evidently, in the Mid-West. Pineapppling, a peculiar growth of the fans that seem to fuse together, double and develop many distorted leaves rather than normal fans is also a "mystery" condition. Little is known of this "disease" and it seems to be more prevalent in warmer climates. As to the actual treatment of the various kinds of rot—proper planting will, for the most part, help to avoid these diseases. Some of the soft rots, bacterial leaf blight, etc., seem to come, however, during prolonged periods of heat and excessive moisture, and some sections of the world always expect this at certain seasons of the year. Good drainage is essential where excessive moisture is likely to occur. The fancier can plan his iris plantings by having raised beds, wide raised furrows, etc., and by incorporating a good porous material into the soil, such as sand or fine gravel, but this may not be necessary if the soil is already the correct composition. Needless to say, all affected parts of rotted plants should be removed and destroyed—never leaving them in the garden or in compost heaps. The exposed parts may be left so for the sun to heal and to destroy the "germs" that caused the disease. Or the parts may be washed with solutions of Potassium Permanganate or Lysol, left to dry, by exposure to sun, or if dug, laid to one side for a few days before planting.

FERTILIZERS AND FOOD

Plants that are well fed will probably be far more resistant to disease than starved plants. Iris are heavier feeders than some fanciers have thought. We must use care, however, in the application of most fertilizers, be they natural barnyard manures or commercial products. Soils that have never grown iris may do so for several years before they become depleted. Trace elements may be lacking in many soils, as might the proper quantities of humus. Compost and barnyard fertilizers will help to add important humus and other elements to the soil, but they may be difficult or almost impossible to obtain in some localities. Peat moss may prove beneficial where other types of humus cannot be had. Where there is heavy vegetation that supplies the ground with leaves each fall, and these have a tendency to make the soil acid, the iris fancier may find it necessary to add lime to the soil and this may be done by adding bone meal or ground limestone at time of planting. Earthworms will help the condition of garden soils where there are great quantities of humus, but they require humus to live on so they may not be essential to soils lacking humus—in fact, may even prove detrimental. Needless to say, all fertilizers should be applied with care. Iris rhizomes (bearded, at least) resent direct contact with almost any of them, so it is wise to apply these deep under the plants or to work them in around the plants. Barnyard manures may be applied in the late fall, and the winter will help to disintegrate and break them down, so they are most beneficial to the soil by spring, when the iris will appreciate a boost. Light dressings of balanced commercial fertilizers (even those with some trace elements like boron, copper, zinc, etc.) may be applied in the early spring or when stalks are starting to show down in the fans. Plentiful water will work with the fertilizers to give those stalks the height and quality to bring forth lovely flowers. Needless to say, exhibition flowers are seldom produced on soils that are depleted, or where plants do not receive enough water before their blooming, and during the blooming season. Few are the fanciers who can rotate their "crops" so that iris may not have to grow in one place longer than two or three seasons. Most of us have small city plots and must grow our favorites year after year on the same ground. We can, however, when dividing and re-setting lift out the old soil and replace it with new that has never grown iris and in this we may incorporate well rotted manures, compost, bone meal, silt (from river beds, canals or ditches), and perhaps some wood ashes. There are those who feel wood ashes help to prevent rot—this may be due to the potash in them and a bit of porous material they add to the soil. Soot is known to help color in the growing of tulips—it may do the same for iris. Surely soils and their composition do affect the various colors found in iris. We have seen blues and pinks in some soils that were so pale they were hardly to be recognized.

ON BREEDING BEARDLESS IRIS

Because of the very fine and light pollens found on most of the beardless iris species, and their offspring, it is necessary to open any blooms that are to be pollinated—to remove the stamens and to take off the falls to prevent their being fertilized with outside and unwanted pollens. It might even be wise, in some localities, to bag the flowers to keep out insects that bring in unwanted pollens. There is a great field open to those who will work among the beardless iris—the spurias, the siberians and the Louisiana group. Fortunately the Louisianas are being brought to the fore and it is found, now, they will grow in all sections of the country—their only requirement being plenty of moisture and rich soil—perhaps a bit on the acid side. To make these richer, more varied in color, more floriferous will challenge the hybridizer and give him much to look forward to.

DWARF BEARDED

These, too, are becoming increasingly more popular. At last the true Pumilas have been successfully crossed with *I. arenaria* and *chameiris* and a wide range of colors and forms are soon to be

had. Thanks to the untiring efforts of Walter Welch the dwarf has come to the front. It is an important garden subject for it starts the iris season, and they come when we long to see bloom after months of cold winter waiting. We heartily congratulate Walter Welch for his winning the Caparne award with Primus—a superb little variegata. As soon as some of his new things are available it will put breeders years ahead in hybridizing this new race of lovely dwarf "hybrids". These are proving fertile, to a great extent, where many of the early I. Pumila and I. Arenaria seedlings were not.

TALL BEARDED IRIS SEED

Again I will make crosses and offer pedigreed seed. I cannot sell less than 20 seeds of a cross due to the time involved in making the crosses, labeling, gathering, then labeling envelopes, packaging, etc. I do this not to make money, anyway, for my time is too valuable to hybridize for others. I do it to help fanciers get seed from new lines that will put them ahead in their breeding programs, and it is my hope, too, that when a good seedling appears the fancier may send a plant or two here for trial and if it proves worthy I will be glad to buy the stock and introduce it into commerce, unless the fancier has other plans for it. Any seedlings grown from the seed I sell will, of course, be considered the property and hybridizing of the purchaser and grower, but if pedigrees are to be falsified little would be gained—in fact, much might be lost, so the customer and hybridizer each trust to the integrity and honesty of the other. I cannot make specific crosses, however, due to innumerable things that happen: some varieties have no pollen, others do not set seed and some may fail to bloom. And then there are hazards of inclement weather: hail, rain, wind, frost or heat. But I will use new varieties or selected seedlings that are advances in their color classes, so state your wants—giving a choice of alternatives. Seeds mailed about early September.

TALL BEARDED SEED

All colors (no less than 20 seeds of a single cross sold).....10c each
 Pinks, Salmons and Oranges involving Pink Formal, Salmon Shell, Party Dress and
 Apricot Glory (no less than 20 seeds of a cross sold).....15c each

DWARF IRIS SEED

From the various colors.....15c each

SPURIA SEED

Using named varieties almost exclusively.....10c each

PEDIGREED SEEDLINGS

Selected seedlings in all colors, some under number, with pedigrees.....\$1.00 each
 Pinks, Salmons, Peach, Oranges and their bi-products, involving Pink Formal, Salmon Shell,
 Apricot Glory, Party Dress, 49-11 C, and other fine new seedlings.....\$3.00 each
 Seedlings will be sold during the T.B. shipping season only—no spring shipments.

TERMS OF SALE

Cash with order. Postage paid on orders for \$5.00 or more, orders for less add 25c to help defray packing and postage.

DISCOUNTS — EXTRAS

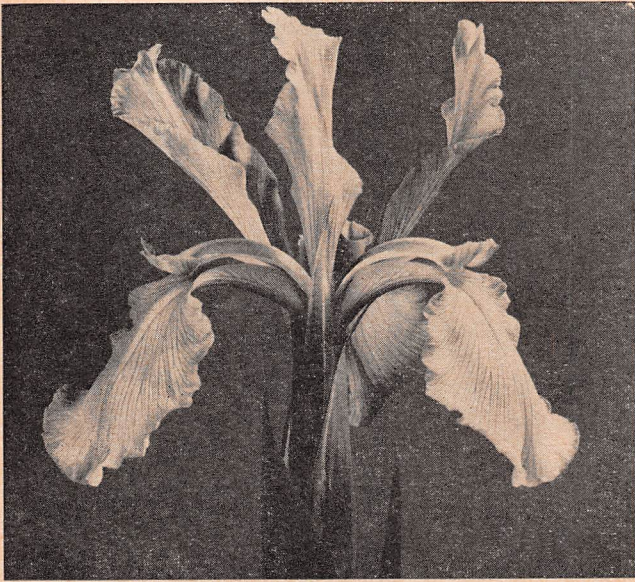
Due to higher costs of shipping and producing plants it is necessary for me to discourage too many small orders, for they are time consuming. We would appreciate customers to try to make all the selections they wish and have them all sent at once, if possible, to save packaging of several boxes. We offer a 25% discount on all orders amounting to \$20.00 or more. Varieties marked "NET" in the catalog are not to be considered for discount. We do not make collection offers and therefore make this discount to our customers, and we like to be generous and ask that you send us a list of alternates in event a variety may be sold out and from this we will select EXTRAS and in this way we are assured of sending you something you do not have and would enjoy. We will replace any variety that may prove untrue to label, and while we are discontinuing the replacing of varieties that may die after winter sets in we will, so far as possible, include these as extras with your next order to us. We will, however, replace any variety that you may lose after planting up to October 15th the year of purchase. It is sometimes a hazard to guarantee the growing of a rare plant when some fanciers are not thoughtful with planting or care. We have heard of some rather new plants being set out under the eaves of a garage, where a goodly supply of rain kept washing them out and causing some to rot, while those with stamina enough to live failed to bloom for lack of sunlight. So you can see we cannot be responsible for growing conditions beyond our control. But you will find us very cooperative and helpful as well as generous.

SHIPPING DATES

We will start shipping the last week in June and will continue shipments up to October 1st. Please do not ask for earlier or later shipments. We have a certain amount of work to do for ourselves, too, and it is difficult to accomplish this if orders continue to come late in the season. We will try to ship at any specified date (within the shipping season) for your convenience, but since the bulk of our customers request July 15th to 30th shipping, please allow us some leeway, if possible. We try to be prompt, courteous and generous. Orders will be acknowledged with approximate shipping date given.

JOIN THE AMERICAN IRIS SOCIETY

Every true iris fancier will enjoy membership in one of the great flower societies. The four quarterly bulletins are full of news of interest to iris lovers. Dues are \$3.50 yearly. \$5.00 for family membership (husband and wife), or \$5.00 for sustaining membership—a means whereby one can make a bit of a contribution for the good of the Iris Society. Membership in the Iris Society of England is \$3.00. Their annual yearbook is a must. Dues for either society may be sent to me or directly to The American Iris Society, Franklin Road, Brentwood, Tenn. As an inducement to anyone who is not a member of either society I will offer a fine pink seedling of Pink Formal blood if you send your dues to me together with your iris order.



SPURIA IRIS

UTAH TO BE HOST FOR THE 1954 AMERICAN IRIS SOCIETY CONVENTION

Two years is a short time to prepare for such an important event as the annual meeting of the American Iris Society, however, fanciers here have maintained their gardens quite well and we have a great many serious-minded hybridizers, so undoubtedly we will have much of interest to show iris fanciers as well as lovers of scenic and man-made beauty. In view of this meeting committee members have made plans to establish a trial garden where guest plants will be grown together and will be easily judged in their display beds. It is a great undertaking, but one which should prove highly satisfactory to hybridizers who send iris to be seen by the convention visitors and judges. While two-year clumps make for a better display, and usually more certain of bloom, there will come along some superb seedlings that hybridizers will want displayed for this convention so we anticipate the arrival of guests this year and next. The plants will be well cared for and given every opportunity to bloom. Each will be labeled clearly and will be returned to the hybridizer during the summer following the convention, unless other arrangements are desired, and asked for. So if you have a seedling you think is superior or distinct, make arrangements to send it to Fisher Harris, 1422 Military Way, Salt Lake City, Utah. We would suggest the use of the Display Bed for your good things, but if you have enough stock to send extra rhizomes to some private individual to be seen in another garden, under different growing conditions, do this—it will enhance the chances of having your things in good bloom for the convention.

DEEP
MAROON

(Page 2)



HELEN
FITZGERALD

(Page 14)



THE TANNER

(Page 27)

TELL'S IRIS GARDENS

(Tell Muhlestein)

691 East 8th North

PROVO, UTAH