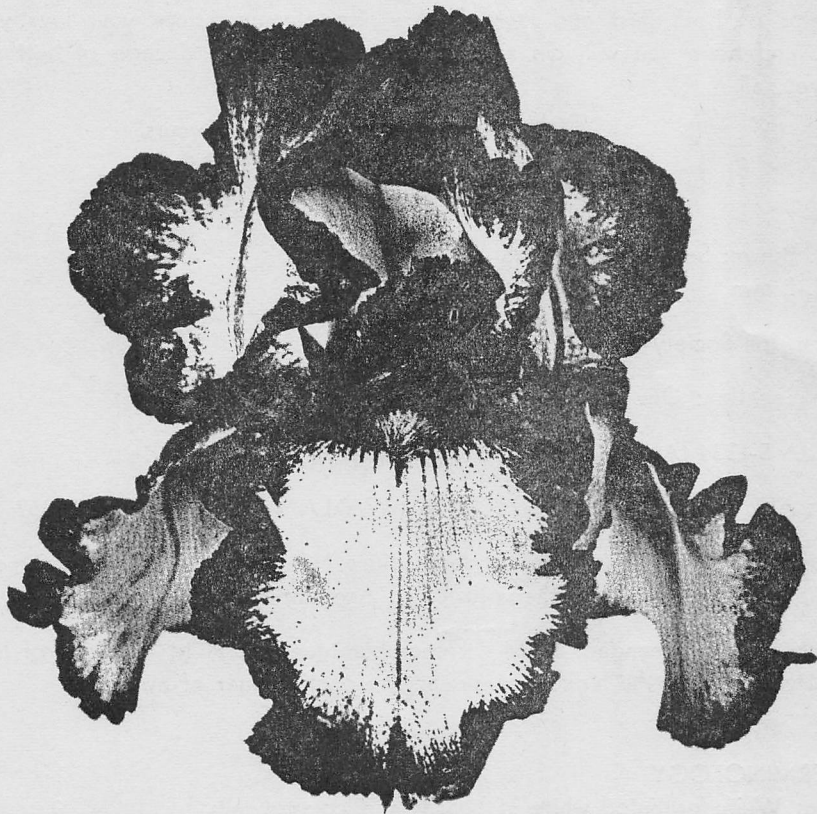


1970 IRIS



Brown's Sunnyhill Gardens

ROUTE 4 — BOX 26

WALLA WALLA, WASHINGTON 99362

Greetings Irisarians!

Our Eighteenth Year marks the beginning of a new decade, and, technically, closes the gates on the Sixties— Yet, how does one blot out a past which is so much a part of both Present and Future? For certainly, without the past years, the Present would be very, very empty and meaningless indeed. What a dismal Future the new decade would promise were it not for pleasant memories, the hosts of warm friendships of both Past and Present. We sincerely appreciate your loyalty and support and hope you will join with us in making this the decade of better iris. Thank you, all.

Sincerely yours,
Tom and Opal

Opal L. Brown: Senior Judge, AIS
Tom M. Brown

American Iris Society

Garden Location: One Half Block North of 1600 E. Sumach Street

Phone: JA 5-1334 (Area Code 509)

Address ALL MAIL to ROUTE 4, BOX 26 - WALLA WALLA, WASH. 99362

SYMBOLS: Abbreviations following descriptions indicate Awards of the American Iris Society as determined by the votes of its Accredited Judges.

H C - Highly Commended; H M - Honorable Mention; A M - Award of Merit;
D M - Dykes Medal, the highest honor; and respective year of award.

IRIS TERMINOLOGY

Amoena: White or tinted white standards and colored falls.

Blend: Combination of two or more colors.

BiColor: Standards light colored; falls a different darker color.

BiTone: Two tones of the same color.

Plicata: Stitched, dotted or stippled margin on lighter background.

Variiegata: Yellow standards; falls in tones of brown, purple or red.

Standards: The three upper petals of the flower.

Falls: The lower petals of the flower.

the American Iris Society. Four Bulletins annually help keep you informed on all phases of iris culture. Dues \$7.50 yearly —to: American Iris Society, 2315 Tower Grove Blvd., St. Louis, Missouri 63110.

GUARANTEE

All plants guaranteed true to name, to reach you in healthy condition, and to be of normal size according to variety. Every rhizome must be satisfactory on arrival or we expect you to return them promptly, postpaid, for exchange or FULL REFUND. Cultural suggestions with order.

SHIPPING DATES

Iris Orders will be shipped beginning in Early July, continuing until October 1st— We advise early planting to provide maximum time for plants to become well established — ORDER EARLY — Don't wait until the last minute, choose early from complete stocks. Orders are shipped in rotation unless specified dates are requested.

FOREIGN SALES

Orders from outside the United States MUST be accompanied by necessary forms required — Import and Customs Regulations must be complied with and all shipping costs shall be at expense of purchaser.

READ CAREFULLY!!

SPECIAL DISCOUNTS !!

EARLY ORDER BONUS

All Orders amounting to \$10.00 or more Postmarked Prior to JUNE 15th will receive a "Choice" bonus iris of our selection. This will be in addition to the customary "extra" given with each order.

TERMS OF SALE

MINIMUM MAIL ORDER — SEVEN FIFTY (\$7.50) Dollars — Plus Fifty Cents (.50¢) Packing and Handling Charge. We give EXTRA GIFT IRIS with all Retail Orders.

SPECIAL NOTE — ALL VARIETIES LISTED UNDER "GENERAL LISTING" MAY BE PURCHASED AT ONE HALF (1/2) THE LISTED PRICE! EXCEPTING VARIETIES DESIGNATED NET. WHEN ORDERING NET VARIETIES YOU ARE REMINDED TO PLEASE LIST A FEW IRISES FROM WHICH A GIFT MAY BE SELECTED. WE DO NOT SUBSTITUTE ON ORDERS UNLESS DIRECTED TO DO SO. PLEASE LIST ALTERNATES AND STATE YOUR CHOICE.

Cash — Check — Money Order — or Draft. No C.O.D.'s Please! Residents of the State of Washington ONLY are required to pay the 4.5% Retail Sales Tax. This must be included with remittance for your order.

This Catalog supercedes all previous issues.

1970 Introductions

ALLURA

NET \$25.00

(O. L. Brown '70) T B, Midseason, 35 to 38 in. Light lavender self with edges of falls a bit deeper, pale yellow beard. Rounded form with closed standards and nearly horizontal falls. All petal edges are lavishly laced and fluted. Clean, wide hafted flowers are carried on strong stalks having three branches and terminal. Rippling Waters x Sdlg. No. 3-5E4 X Reciprocal cross. Sdlg. No. 3-5E4 involves—Pierre Menard, Jane Philips, Chantilly, Pretty Quadroon, Picture Bouquet, Arlene Wood, Altar Light, Beth Corey and Queen's Lace. (Sdlg. No. 7-32D14, HC '69.)

DISCOVERY BAY

NET \$25.00

(O. L. Brown '70) T B, Midseason, 38 inches. Light wisteria blue self with color deepening a bit in the heart. A soft blue beard adds subtle charm to the gracefully flared flowers. Pleasingly ruffled and beautifully held on three way branched stalks. Excellent grower having healthy green foliage with deep purple base. A favorite for the past three seasons. Sdlg. No. 7-17A25, Commentary X Silver Trail.

GOLD BUNTING

NET \$5.00

(O. L. Brown '70) Border bearded, 26 to 28 in., early to midseason. Bright little Four inch full yellow flowers with tiny white blaze at tip of yellow beard. Small foliage is in ratio with the small flowers and slender stems. Ideal for the border and arrangements. Sdlg. No. 2-25A12, involves Golden Valley, Gosper, Poet's Dream x Phoebus Appollo X Poet's Dream.

GREENSLEEVES

NET \$7.50

(O. L. Brown '70) T B, Midseason, 33 inches. Small flowers measuring about 4x5 inches; slender stalks with foliage in ratio. The height is the only trait placing this otherwise border iris into the Tall bearded class. Branching somewhat "Y" angled but overlooked in admiration of the daintily fluted flowers. Closed standards are light french rose with fine edge of chartreuse, flaring falls are rose with wider border and hafts of chartreuse. Interesting beards of subtle tangerine and rose. Sdlg. No. 6-15D5. Pink Cheeks x L-4E1 (involved pink sdlgs.)

PINK MAGNOLIA

NET \$20.00

(O. L. Brown '70) T B Novelty, Midseason, 28 inch. This waxy pale pink iris is made up of six falls minus standards and with varying numbers of styles (usually three, at times one or two). Pink veins radiate from the heart which is accepted with deeper pink beards, those on the inner petals being thin and narrow. Magnolia shaped flowers are displayed beautifully on stalks with two branches and terminal. Retention of petals is aided by the marvelous substance. To date the novel flower form has remained constant. The effect of magnolia, or water lily, blossoms growing on iris stalks may be too much for the "purists", however the multitude of normal flower lovers will welcome this novel newcomer with much pleasure. Sdlg. No. 6-15A5. No. L-4E1 (involved pinks) Candle Flame.

SABER DANCE

NET 25.00

(O. L. Brown '70) T B Midseason, 38 inches. Ruffled, domed standards are amaranth rose, semi-flaring falls are a blend of champagne and rose with heavier concentration of color on the hafts and sides. An overall copper lustre gives a changeable color effect. Most unique is the beard which is raspberry at the base with the top half of the hairs burnt orange. Beautiful four way branching with 9 to 10 buds. Sdlg. No. 66-171, H C '69. No. 64-102 (Grandiflora x No. 2-3L6 (pink sdlg. x Gypsy Lullaby sib) X Barcelona sib.

WOODLAND ROSE

NET \$25.00

(O. L. Brown '70) T B, Midseason to Late, 40 inch. Beautifully ruffled flowers of rosy lavender with nasturtium beards. Standards are rounded but firmly closed, rippled falls flare gracefully. Excellent, widely spaced three way branching, eight buds. Sdlg. No. 6-11K16 —full sib to Cloverdale. Parentage—Rippling Waters x No. 3--C2 (Pipes of Pan x Dawn Flight).

Border Bearded
(18 to 28 inches)

(For your convenience, we have listed all of our Border Bearded varieties on this page)

BABY SHOWER— Ruffled white	\$4.00
BLUE MILLER— Blue, deep blue beard	2.00
BROWNIE SCOUT— Brown blend, orange beard	3.00
CANDY SWEET— Pale pink, coral beard	4.00
CHEERFULNESS— Gold & coral blend, red beard	3.00
CUB SCOUT— Yellow & brown blend, orange beard	4.00
FRENCHI— Rose violet bitone, tangerine beard	1.00
GOLD BUNTING— Flared gold self	Net 5.00
JUNGLE SHADOWS— Deep smoky gray violet blend	1.00
LITTLE LYNN— Rich pink, gold hafts, red beard	2.00
PEBBLES— Reverse light blue amoena	3.00
PEEKABOO— Flared, light violet plicata	6.00
RADIANT GEM— Rich pink, gold hafts, red beard	2.00
SING AGAIN *Int.— Yellow bitone, yellow beard	3.50
SWEET LOVE— Ruffled, lacy cream self	1.50
VIBRANT CHARM— Apricot and yellow, tangerine beard	4.00

General Listing

- ACORN** \$5.00
(L. Hooker '66) Large medium brown self with round flaring falls. H M '67
- AD ASTRA** \$15.00
(S. Babson '67) This new "King Size" beauty has lemon yellow standards and falls of white edged yellow. All petals are wide and ruffled. H M '68
- AFTER ALL** \$12.00
(D. Hall '67) 30". Lovely ivory pink with ruffled closed standards and wide flaring falls with deep coral beard. All petal edges are heavily fringed.
- AFTER DARK** \$2.50
(Schreiners '63) Velvety deep violet with size, ruffling and branching. H M '64.
- ALCALDE** \$17.50
(Babson '68) Fluted indigo violet with deep blue beard. Wide branching, strong stalks.
- ALLURA** See Introductions
- AMIGO'S GUITAR** \$7.50
(Plough '64) Standards are buff with violet infusion at midribs. Smoky violet falls are wide and fluted; beard is yellow. Well branched stalks. A M '67.
- ANGEL BRIGHT** \$10.00
(C. Rees '66) Large, beautifully formed white with bright gold shoulders and beard. Well branched stalks carry a profusion of buds. H M '68.
- ANGEL LYRIC** \$3.50
(Schmelzer '63) Ruffled bright pink with pink beard. Medium height. H M '64.
- ANNABEL LEE** \$10.00
(Schreiner '66) Moderately ruffled light rose-pink with red-orange beard. Tall well branched stalks. H M '67.
- APRICOT ROYAL** \$10.00
(B. Jones '67) Smooth textured, deep apricot of good form. Well branched stalks.
- APRIL MELODY** \$8.00
(Gibson '67) White ground with lavender pink stippling. Best pink plicata to date. Wide ruffled petals and nice form. H M '68.
- APROPOS** \$10.00
(S. Babson '64) Extra large ruffled flowers of soft lavender with a deeper wash in the falls. Maroon veining deep in the throat and a pastel blue beard adds distinction. Tall, well branched. A M '69.
- ARABECA** \$9.00
(Knopf '67) Standards old gold, falls brown with purple infusion and brown beard.
- ARCTIC FLAME** \$3.00
(Fay '60) Frosty white with heavy red beard. Ruffled flower nicely formed; well branched. A M '62.
- ARCTIC FURY** \$8.00
(C. Benson '64) Lovely ruffled pure white of semi-flaring form and excellent substance. A M '67.
- AUDA** \$7.50
(Schmelzer '66) Ruffled, cool white with lavender tint through center of flower.
- AZURE APOGEE** \$15.00
(Durrance '67) Lovely light blue with deeper blue beard. Lightly ruffled petals and fine form. H M '68.
- AZURE LACE** \$12.50
(G. Plough '66) Large pastel blue with lightly laced petal edges and lemon beard. H M '69.
- AZURE STRIPES** \$2.50
(J. Hoage '64) 34" M. Rich, medium blue with deep blue veining in the semi-flaring falls. Good stalk and strong grower. H M '65.
- BABBLING BROOK** \$10.00
(K. Keppell '66) Excellent French blue with light texture veining and pale lemon beard. Lovely ruffled form; good growth habits. A M '69.
- BARCELONA** \$15.00
(O. L. Brown '67) Standards of deep champagne with violet infusion at midribs. Wide, flaring falls are rich wine-red with tangerine beard. Well branched stalk. Unique and distinctive. H M '68.

BAYADERE **\$1.50**

(O. Brown '62) 28-30". Attractively laced metallic brown self. Standards are well held and flare gracefully. Excellent substance. H M '63. Knowlton Award '65.

BAYBERRY CANDLE **\$22.50**

(C. DeForest '68) Glowing new bi-color with chartreuse standards and golden olive-green falls with brown beards. Exciting in appearance and offers great possibilities as a breeder.

BERMUDA HIGH **\$5.00**

(Tompkins '64) Smoothly finished deep ruby red on the brown side; rich brown beard. Well branched stalks. H M '66.

BIG SUR **\$10.00**

(Craig '62) Large, broadly flaring violet blue. Tall, well branched stalks.

BILLOWING SAILS **\$3.00**

(D. Palmer '63) Large shimmering white with broad semi-flaring falls and lots of ruffles. H M '64.

BLUE BARON **\$3.50**

(Schreiner's '62) Huge, marine blue self with ruffles and classic form. Excellent branching. Valuable show flower. A M '65.

BLUE BAYOU **\$7.50**

(Plough '66) Medium blue with orange beard tipped white. Well branched stalks with large ruffled blooms.

BLUEBELL LANE **\$12.50**

(C. DeForest '66) Much ruffled large lavender blue with a heavy lavender blue beard. Closed standards and broad flaring falls. Tall and well branched. H M '67.

BLUE CHIFFON **\$6.00**

(Schreiner '66) Light Cerulean blue self with blue white beard. Tall, excellently branched stalks carry numerous ruffled tilting flowers. H M '67.

BLUE MOUNTAINS **\$3.50**

(Schreiner '64) Large, medium violet blue self with good branching and fine growing habits. Profuse bloomer. H M '65.

BLUE PETTICOATS **\$5.00**

(Schreiner '65) Intensely ruffled light blue plicata with blue tipped beard. Tall stalks and fine branching; flowers are crisply flaring. A delightful addition to this class. A M '68.

BRASS ACCENTS **\$1.50**

(Schreiner '59) A large golden brown with excellent stalk and branching. H M '61.

BRIGHT BUTTERFLY **\$17.50**

(B. Jones '67) Bright orange self with heavily laced petals and deep orange beard. H M '68.

BRIGHT SHIELD **\$12.00**

(O. L. Brown '68) Large ruffled medium yellow with domed standards and wide flaring falls; deep gold beard. Tall, well branched stalks. Vigorous.

BRISTOL GEM **\$7.50**

(M. Leavitt '65) Huge, medium deep blue self, blue beard. Tall, well branched stalks. Excellent. H M '67.

BROAD PACIFIC **\$15.00**

(Knopf '68) Large, ruffled spectrum blue self with heavy texture. Strong, well branched.

BUFFY **\$22.00**

(O. L. Brown '69) Tall, well branched stalks display the fluffy flowers to perfection. Domed standards are pale orient pink with fringed buff edges. Wide hafted petals are ivory pink with buff pink hafts and frilly edges. Producing exciting seedlings.

BURNING COALS **\$15.00**

(Hager '68) Red standards, smooth black red falls. Excellent branching. H M '69.

CALIENTE **\$15.00**

(Luihn '68) Smoothly finished bright wine red with antique gold beard. Excellent branching, many buds. H M '69.

CAMBODIA **\$22.50**

(S. Babson '66) Huge ruffled blend. Standards antique buff with inside stained orchid-purple. Falls pastel violet edged olive tan, olive-gold hafts and dark blue beard brushed bronze. H M '67.

CANDALARIA **\$15.00**

(Schreiner's '68) Combined shades of orange, buff-russet and amber, with copper overlay. H C '67.

CARILLON FESTIVAL \$16.00

(O. L. Brown '68) Ruffled standards are pale barium yellow. Wide ruffled falls are white with yellow beard and heart. Excellent branching and many buds. Lovely fragrance.

CAROLANDS \$7.50

(G. Corlew '65) Lovely blend of coral, apricot and pink highlighted by a full mandarin-red beard. H M '66.

CATALINA \$6.00

(Schreiner '63) Deep marine blue with blue tipped beard. Flowers are large, branching is good. H M '65.

CELEBRATION \$15.00

(Ghio '68) Standards apricot, falls yellow, pink, white and orange. Wide, ruffled and lightly laced. Fine branching. H C '66.

CELESTIAL SUNLIGHT \$2.00

(Bro. Charles '60) Ruffled, clear medium yellow with lighter area near beard tip.

CERAMIC BLUE \$15.00

(Mayberry '66) Smoothly finished french blue with blue tipped beard. Excellent form and growth habits. H M '67.

CHAMPAGNE MUSIC \$5.00

(O. Fay '64) Delicately tinted blue-orchid with near white beard tipped red. Large flowers are frilled and ruffled and falls flare nicely. A M '67.

CHARADE \$7.50

(S. Babson '66) Deep violet with blue beard. Nicely ruffled flowers and well branched stalks. H C '65.

CHARMAINE \$15.00

(Harblen '67) Standards apricot-yellow with center flush of white; falls same with larger white area and a wide tangerine beard. Ruffled blooms, heavy substance. Well branched stems. H M '68.

CHARM SCHOOL \$7.50

(D. Palmer '64) Lovely ruffled and lightly laced cream of good form. Fine late variety. H M '65.

CHERUB CHOIR Net \$20.00

(Corlew '68) White standards veined pink, falls pale pink, white in center. Beard white blending to tangerine in throat. Attractively ruffled flowers on well branched stalks. Makes a beautiful clump. H M '69.

CHINESE CORAL \$5.00

(O. Fay '62) Bright pinkish-orange self with brilliant coral beard. Well branched, colorful. A M '65.

CHRISTMAS TIME \$8.00

(Schreiner '65) Sparkling white with thick red beard. Well branched stalks carry the beautifully ruffled flowers with great flourish. A M '68.

CIRCLE D \$5.00

(C. DeForest '65) Large ruffled plicata. White ground, with deep border of violet on the standards and around the flaring falls. Many flowers per stalk. H M '68.

CLAUDIA RENE \$3.00

(Gaulter '63) Amber pink standards, rose violet falls with brownish shoulders and burnt orange beard. Excellent form and branching. A M '66.

CLOUD CAPERS \$7.50

(Schreiner '66) Domed standards are white flushed pale orchid, falls are orchid pink semi-flaring and lightly ruffled. H M '67.

CLOUD CREST \$15.00

(B. Jones '69) Ruffled standards are white infused with lavender, lightly laced falls are white with red beards. H M '69.

CLOVERDALE \$20.00

(O. L. Brown '69) Ruffled white standards are well rounded and closed at top, flaring falls are rosy lilac with lightly crimped edges. Flame red beards add warmth and contrast. Superb stalk.

COLLEGE QUEEN \$3.00

(D. Hall '64) Large ruffled light pink self with heavy substance. Height and branching good. H M '66.

COMMENTARY \$6.00

(Babson '63) Buff standards, light lavender falls with red-brown hafts and lavender tipped beard. Wide, nicely formed flowers on well branched stalks. Unusual and a beauty. A M '67.

CONFECTION \$8.00

(S. Babson '67) Loveiy blend of bluish pink with rose-orchid haze and orchid beard. Well formed and copiously ruffled.

CONGO SONG \$3.00

(E. M. Christensen '63) Dark violet standards and near black falls edged violet. Beard is violet. Well branched. H M '64.

CORABAND \$3.00

(Hamblen '63) Cupped coral-yellow standards; flaring white falls flushed orchid with coral-buff border. Bright orange beard. H M '68.

CORAL BUTTE \$8.00

(Plough '65) 30". Large, rich coral with ruffled petals and bright red beard. Well branched, vigorous.

CORAL GLOW \$22.00

(O. L. Brown '69) Luscious, sparkling coral-pink and white. Standards coral-pink, extra wide falls are glistening white with a border of buff pink. Thick mandarin red beard adds a fiery glow. Strong, well branched stalks.

COUNTY FAIR \$12.50

(G. Corlew '66) Crisp, ruffled canary yellow, deeper beard. Well branched stalks, many buds. H M '67.

COURT BALLET \$2.50

(Moldovan '60) Very large ruffled pink self with red-orange beard. A M '63.

CRAFTSMAN \$5.00

(Knopf '64) Ruffled standards of deep yellow; cream falls with yellow border and orange hafts. Tall well branched. A M '67.

CREDO \$10.00

(S. Babson '66) Rich deep maroon with nicely closed standards and ruffled flaring falls. Beard maroon brushed bronze. A lovely newcomer. H M '67.

CRYSTAL BLUE \$3.50

(Schreiner '64) Frosty light blue with broad petals and nice form. This one shows good blue color in the garden. H M '65.

CRYSTAL FLAME \$7.50

(B. Jones '67) Fine, large white with bold red beard. Nicely formed flowers on well branched stalks. H M '68.

CRYSTAL RIVER \$10.00

(Plough '64) Light Cobalt blue self with pale yellow beard. Lightly ruffled crisp flowers with glistening finish. H M '65.

CUP RACE \$8.00

(Buttrick '63) Large, lovely white self with beautiful form and excellent branching. A M '69.

DANCING BRIDE \$3.50

(Rudolph '63) Heavily ruffled frosty white with lemon-yellow hafts. Beautifully formed, well branched. H M '64.

DEBBY RAIRDON \$7.50

(Kuntz '65) White; edges of standards and reverse of falls are soft yellow. A charming flower with heavy substance and flaring falls. A M '68.

DEBONAIR BLUE \$2.00

(Guy Roger's '62) Glistening medium blue self. Standards are closed and wide falls flare horizontally. Branching is good. H M '63.

DEEP SPACE \$1.50

(Tompkins '61) Large ruffled indigo blue with bright indigo blue beard. Tall stalks, good branching. H M '62.

DELICIOUS \$8.00

(Plough '65) Flaring amethyst violet heavily fluted and laced. Bright orange beard.

DISCOTHEQUE \$10.00

(L. Hohn '66) Domed standards are apricot-pink; flaring falls are apricot-orange with a small white blaze and thick red beard. An excellent grower.

DISCOVERY BAY See Introductions

DRAGON LADY \$10.00

(O. L. Brown '66) Ruffled domed standards are greenish buff. Arched falls are a bit lighter with smooth amber hafts and thick brownish beard; ruffled edges are color of standards. Tall, well branched stalks. H M '67.

DREAM MAIDEN \$2.50

(E. Smith '63) Standards soft golden buff, falls white with a fine margin of gold lace and a touch of gold at hafts. Lovely, full formed flowers with ruffles and lace. H M '65.

DREAM SONG \$7.50

(E. Smith '65) Laced flaring cream with gold border on standards and falls. Gold hafts and a bright tangerine beard.

- DREAM TIME** \$12.00
(Schreiner's '67) Large, lavender pink with wide ruffled petals and a beautiful form. H M '68.
- DUSKY DANCER** \$17.50
(W. Luhn '67) Beautifully formed deep black-violet self, including the beard. Wide ruffled flowers well spaced on tall stalks. Vigorous and a beauty. Top H M '68.
- ECHO ONE** \$10.00
(Schortman '66) Rich yellow and brown plicata with a white blaze in the falls. Beard is light brown. H M '67.
- ECSTATIC NIGHT** \$4.00
(Cook '63) Very rich black with a blue-violet cast; dark blue beard. H M '64.
- ELEGANT FARMER** \$8.00
(Gaulter '68) Huge soft tan with bluish blaze on the falls. Heavy orange beard lends contrast. Vigorous grower. Sturdy stalks.
- EL MONSOUR** \$2.00
(D. Hall '62) Immense greenish ivory with amber tints. Amber shoulders on falls, beards are orange red. Edge of falls are crimped and ruffled. H M '65.
- ENTERPRISE** \$5.00
(C. & K. Smith '64) Smooth, medium yellow with good substance and rippled horizontal falls. An iris of "character." H M '65.
- EPIC** \$10.00
(S. Babson '65) Huge light blue with orchid tones. Closed standards; ruffled flaring falls. A giant in all respects. H M '66.
- ESTHER FAY** \$3.50
(Fay '61) Well formed light pink self with reddish-pink beard. Well branched. A M '64.
- ETERNAL LOVE** \$10.00
(Schmelzer '67) Nicely formed ruffled flowers of palest lilac; full white beard.
- EVENING BREEZE** \$14.00
(O. L. Brown '68) Large ruffled medium violet with matching beard. Conical standards, wide arching falls. Attractive crimped edging on all petals. Tall, well branched.
- EVER AND EVER** \$3.00
(I. Hope '62) Lightly laced, ruffled orchid violet. Large, well proportioned blossoms on strong stalks, branching a bit high. A M '66.
- FAIRY FABLE** \$2.00
(Ernst '61) Medium pink with tangerine beard. Flowers are ruffled and of heavy substance. Good growth habits. H M '62.
- FAVORITE TOPIC** \$7.50
(Schmelzer '66) Pale sea lavender standards, arched falls a bit darker. Large, very ruffled flowers with sparkling finish. Fine branching. H M '67.
- FIESTA BAZAAR** \$10.00
(Tolman '67) Striking white ground plicata marked with burgundy, rich brown beard. H C '66.
- FIFTH AVENUE** \$2.00
(Hamblen '62) Cupped standards are Campanula violet; flaring falls are Amethyst violet with amber haft and orange beard. Wide ruffled, lightly laced. A M '65.
- FINAL TOUCH** \$10.00
(Terrell '67) Orchid bitone with darker falls. Closed standards and flaring fluted falls.
- FIREBALL** \$7.50
(Schreiner's '67) Glowing deep red, clean and flaring. Excellent height and branching. H M '68.
- FLAMING DRAGON** \$7.00
(Fay '66) Smooth blend of apricot-orange overlaid glittering gold. Domed standards and clean semi-flaring falls with a bright coral beard. H M '67.
- FLAMING HEART** \$5.00
(Fay '63) Smoothly textured flaring pink with deep coral beard. Tall, well branched stalks. A M '66.
- FLAMINGO DAWN** \$15.00
(L. Peterson '67) Delightfully ruffled pastel bicolor having peach pink standards and violet-blue falls with burnt orange beards. Lovely for the border. H M '68.
- FLAMING STAR** \$20.00
(Plough '67) Brilliant orange of medium size with orange-pink flush in both standards and falls. Bright orange red beards. H M '68.

- FLAPPERETTE** \$8.00
(C. Benson '65) Melon pink standards, white semi-flaring falls, evenly bordered melon pink. Wide, ruffled and of heavy substance. H M '66.
- FLAXFLOWER BLUE** \$10.00
(C. DeForest '67) Lovely french blue self with blue beard. Flaring flowers on well branched stems. H C '66.
- FLIGHT TIME** \$8.00
(O. L. Brown '65) White standards are crisp and cup shaped; rich violet falls are wide, ruffled and flare gracefully. Lemon yellow beard surrounded by a white area forms a pleasing pattern. Tall, well branched.
- FLUTED LIME** \$7.50
(Noyd '66) Flaring light chartreuse self with fluted petals. Smooth color and texture. A worthy addition to the "green" class. H M '67.
- FOND MEMORIES** \$10.00
(Schmelzer '67) Pastel lavender-blue standards with deeper lavender-blue falls paling to near white in the heart of the very ruffled flowers.
- FOUNTAIN BLUE** \$5.00
(Hamblen '66) Hyacinth blue with violet undertone. Large, lightly ruffled flowers with closed standards and semi-flaring falls. H M '67.
- FRENCH LACE** \$4.00
(Plough '63) Large semi-flaring flowers are warm white with yellow infusion on clean hafts. All petal edges are heavily laced. H M '66
- FRONTIER MARSHALL** \$5.00
(Schreiner's '65) Fine, rich red with large, clean hafted blooms. Tall, well branched. A M '68.
- FUJI'S MANTLE** \$10.00
(Schreiner '66) Snow white standards and ruffled falls of Cerulean blue which deepens at the edges; pale yellow beard. Well branched stalks to carry the clean starched flowers. A M '69.
- GAILY CLAD** \$4.00
(J. Nelson '63) Light methyl violet with Canary yellow hafts and a broad orange-tangerine beard. Height and branching are good. H M '64.
- GALA GOWN** \$2.00
(Corey '59) Warm melon pink with apricot beard. Lightly ruffled petals have a smooth satiny finish. Tall and appealing. H M '59.
- GAY LIGHTS** \$6.00
(Schreiner '65) Coppery brown standards laced at tips; falls yellow-gold with a bit of lace on lower edges. Bright— has excellent garden value. H M '66.
- GAY WHISPER** \$7.50
(Shoop '65) Light yellow standards flushed pink. White flaring falls. Well branched stalks with many buds. Early.
- GINGERSNAP** \$8.00
(Schreiner '65) Rich ginger-brown with orange brown beard. Broad flowers have a rich sheen and are carried on well branched stalks. A M '68.
- GLACIER SUNSET** \$15.00
(O. L. Brown '66) Ruffled standards are white tinted orchid at base of mid-ribs. Ruffled arched falls are a pleasing shade of orchid enriched with a bright chinese coral beard. Tall, excellent branching and many buds. H M '68.
- GLITTER GLOW** \$3.00
(Noyd '63) Lightly laced creamy yellow self with darker hafts and tangerine beard. H M '64.
- GOLD BUNTING** See Introductions
- GOLD CITATION** \$6.00
(M. Olson '65) Both the closed standards and semi-flaring falls are light yellow with white area in center of falls; orange yellow beard. Lightly laced, early. H M '66.
- GOLDEN CHORD** \$5.00
(Hamblen '66) Ruffled medium yellow self with cupped standards; lacy style crests and flaring falls. Heavy substance and sturdy stalks. H M '67.
- GOLDEN DELIGHT** \$2.00
(E. Smith '60) Fine, large golden yellow with orange beard and dainty lacing on all petals. Lovely semi-flaring blooms are carried on well branched stalks.
- GOLDEN FILIGREE** \$3.50
(Gibson '65) Light honey tan standards. Creamy white falls with stitching of standard color. All petals ruffled and intricately laced. Different and appealing. H M '66.

GOLDEN PLUNDER \$8.00

(Fay '66) Ruffled bright yellow with closed standards and semi-flaring falls, deeper beard. Good branching. H M '67.

GOLDEN SNOW \$12.50

(D. Palmer '66) Large, waved, sparkling white with a gold band on the broad hafts. Matching gold beard. Lovely formed flowers of good substance. Bright. H M '67.

GOLDEN SPECTATOR \$9.00

(Haney '68) Tall white ground plicata with yellow standards and ginger brown markings on falls. Yellow beard.

GOLD LIGHTNING \$4.00

(Mayberry '64) Golden yellow with apricot infusion, lighter area in center of falls, heavy red-tangerine beard. H M '66.

GOODNESS \$4.00

(S. Babson '62) Huge, wide flaring blue-white with powder blue beard. A M '67.

GRACIE PFOST \$2.00

(E. Smith '61) Huge, semi-flaring coppery rose blend. Satin smooth and long lasting blooms. A M '65.

GRANADA \$2.00

(G. Carlson '63) Rich blend of mulberry, purple and plum with brown and striking blue beards. H M '64.

GRAND ALLIANCE \$10.00

(Plough '65) Large, flaring rich violet with brownish blue beard. Smoothly finished and lightly ruffled. A fine addition to this color class. A M '69.

GRANDIFLORA \$8.00

(O. L. Brown '65) Domed standards are creamy buff-pink; wide horizontal falls are cream with burnished gold hafts and bright orange beard. The large flowers have excellent substance and all petal edges are intensely laced. Strong 30 inch stalks. H M '66.

GRAND SPECTATOR \$6.00

(S. Haney '65) Plicata, standards white washed cream and gold. Falls white dotted and edged cinnamon; purple markings near haft. Golden tan beard. Showy! H M '67.

GREEN ILLUSION \$7.50

(Jennings '66) A blending of gold, tan and green gives a self of quite a good green effect. Large flowers, husky plants. H M '67.

GREENSLEEVES See Introductions

GYPSY LULLABY \$3.00

(O. L. Brown '61) Ruffled standards are butterscotch with a violet flush. Horizontal falls are medium red-violet with full rounded form and fluted at the hafts. Distinctively different and an excellent breeder. A M '64.

GYPSY SENORITA \$4.00

(Noyd '65) Deep yellow standards and bright red-brown falls. Lightly laced; some roughness at hafts is far overshadowed by good features. Tall with fine branching.

HAPPY HOLIDAY \$7.00

(Schortman '64) Deep glowing yellow with a brushing of sienna red over the upper portion of falls. Ruffled and flaring, good branching. H M '65.

HARMONY HOUSE \$3.00

(J. Marsh '65) Ruffled pink standards; fluted semi-flaring falls of apricot with bright red beard. Well-branched, has many buds. H M '67.

HAUNTING RHAPSODY \$15.00

(Ghio '68) Large, lightly ruffled flowers of lavender-orchid with a lighter area in center of the falls. Bluish white beard. Reported to rebloom in southern zones.

HAWAIIAN HOLIDAY \$7.00

(T. M. Brown '65) The ruffled domed standards are white with a one inch border of deep blue violet. The fluted, flaring falls are glistening white with nearly solid half inch border of deep blue violet. Bue tipped beard. Good branching and many buds. H M '66.

HEAVENLY GUEST \$7.50

(Schmelzer '66) Wide, ruffled, early white with flaring falls and white beard. Good branching, floriferous and attractively laced.

HIDDEN MAGIC \$5.00

(Sexton '66) Neglecta. Domed standards are orchid blue, wide ruffled falls are velvety deep purple. H M '69.

HIGH LIFE \$5.00

(Schreiner '64) Huge plicata, heavily marked burgundy red on cream ground. Vigorous strong grower; a show stopper wherever seen. H M '65.

HIGH PRAISE \$7.50

(Schreiner's '66) Large blue violet with light violet beard tipped white. Wide petals, good substance. H M '67.

HONESTY \$10.00

(Moldovan '67) 30 inch. Near true spectrum blue with white haft and beard. Excellent garden value. H M '68.

IMPERIAL LILAC \$3.00

(Schreiner '63) Frosty lavender self. The huge clean flowers are lightly ruffled and the branching is fine. H M '65.

IRISH LULLABY \$10.00

(Moldovan '65) Heavily laced light pink with broad petals, clean hafts and tangerine-red beard. Domed standards and semi-flaring falls. A M '68.

IVORY GOWN \$3.00

(E. Smith '63) Lovely ivory cream, generously waved and frilled. Blooms display pleasing freshness and clarity on tall stalks. H M '66.

JAILBIRD \$7.50

(Scharff '65) Ruffled flared honey tan with chocolate veining in the falls. A butterfly in brown. Good branching and height. H M '66.

JANICE RUTH \$12.00

(Buckles '67) Deep lavender self. Domed standards, flaring falls, petals lightly laced. Sturdy Stalk.

JANNI \$10.00

(Hamblen '67) 30 inch. Ruffled and laced pink self with cerise beard. Standards domed, falls wide and flaring. H M '68.

JAVA DOVE \$6.00

(Plough '64) Standards are warm white; falls are creamy pink with tangerine beard. Rounded form and clean hafts. Much in demand for breeding potential. A M '67.

JEWELLED FLIGHT Net \$20.00

(Hamblen '68) Flaring white with dainty edges of gold lace and gold hafts. Showy red beard. H C '66.

JEWEL TONE \$7.50

(Schreiner '66) Deep, glossy ruby-red with attractive rounded form. Lightly ruffled flowers have smooth hafts and bronze-purple beard. H M '67.

JILBY \$7.50

(L. Gaultier '65) Blended shades of amethyst violet with burnt orange beard. Domed standards and ruffled flaring falls. Many buds. A M '68.

KIMSEY \$15.00

(Corlew '67) Standards are delicate peach pink, falls are warm white edged peach pink. Petal edges are intensely ruffled. Excellent. H M '68.

KINGDOM \$6.00

(Fay '64) Large, heavily ruffled full yellow. Tall, well branched stems. A M '67.

LACED GOLD \$7.00

(Noyd '65) Heavily laced Indian yellow self with gold beard. Bright and showy!

LACED TAPESTRY Net \$15.00

(Tolman '68) Large, laced flowers of claret wine with a touch of brown at the haft and a faint blue flush at tip of beard. Excellent here.

LAUNCHING PAD \$10.00

(Knopf '67) Light yellow standards, falls are white bordered yellow, beards bright orange. Huge flowers, fine branching. H M '68.

LAURA'S CHOICE \$3.50

(E. Smith '64) Ruffled standards are soft cream with gold laced edges. Flaring falls are deeper cream with lavish border of gold lace. Hafts are smooth gold and beard is bright tangerine.

LAURIE \$10.00

(Gaultier '66) Lovely formed flowers of lilac pink with tangerine beard. Wide petals are heavily laced. Sturdy, well branched. A M '69.

LEMON LIIT \$4.00

(Plough '63) Lemon yellow with infusion of pink in center of standards and also in the falls near the tangerine beard. Flaring ruffled flowers nicely held on well branched stalks.

LEMON TREE \$5.00

(B. Jones '65) Nicely formed flowers of clear light lemon yellow. Tall stalks, good branching. H M '67.

LEORA KATE \$4.00

(Buckles '63) Ruffled chartreuse-yellow self with closed standards and fluted, flaring falls. Vigorous. H M '65.

LIGHT FANTASTIC \$20.00

(O. L. Brown '68) Dramatically fluted ivory white of grand substance with standards flushed pale blue. Deeply fluted, horizontal falls retain a greenish cast. Beard is light yellow tipped blue. Well branched stalks carry 10 to 12 fascinating green buds, which at first appear to have been trimmed with pinking shears, but develop into fantastic flowers. H M '69.

LIGHTNING RIDGE \$15.00

(O. L. Brown '66) Ruffled, closed standards of peach pink with a trace of orchid at the base of midribs. Ruffled semi-flaring falls are broad hafted and blended rosy violet with light bluish area about the luxurious poppy red beard. Tall, superbly branched and exotic. H M '67.

LIGHT TOUCH \$15.00

(O. L. Brown '67) Mid to late. Standards of peach pink, falls are medium spanish orange with a faint green infusion in the center; brick red beard. A bit of lace, ruffles and good substance. Tall with many buds and fine branching. H M '68.

LILA CAROL \$15.00

(Buckles '67) Large rose-pink self. Closed standards, flaring ruffled falls. Substance and branching are both good.

LILAC CHAMPAGNE \$7.50

(Hamblen '65) Light yellow standards, blue-violet falls. Beard and haft soft yellow. Lovely formed flowers, S-curved branching. A M '68.

LILAC MIST Net \$20.00

(Luihn '69) Large, beautifully formed flowers of lavender with a white beard tipped cream. Well branched stalks.

LOVE LETTERS Net \$10.00

(Keppel '68) Standards apricot pink, falls straw yellow with maroon veins radiating from tangerine beard. Eye catching and certainly different. H C '67.

LUCILLE TOLMAN \$15.00

(Tolman '66) Wide ruffled cream. Flaring falls have a light buff border and attractive fluting. Fine branching. H M '67.

LUXURY LINE \$6.00

(G. Carlson '62) White with bright red beard. Light lemon infusion in standards and in the narrow margin of lace. Standards domed, falls semi-flaring with orange gold shoulders. H M '63.

MAD MAID \$5.00

(Gibson '66) Large plicata having reddish-tan standards and white falls bordered Copper which shades into reddish-brown markings. H M '67.

MAHALO \$9.00

(J. Ghio '66) Closed standards are light silvery blue. Broad, flaring falls are red-violet blending to a blue edge, blue beard. Large flowers on tall stalks. H M '67.

MALACCA STRAITS \$4.00

(D. Johnson '64) Rich golden brown self of smooth finish with self beard. Tall, well branched and vigorous habit. H M '65.

MARIE PHILLIPS \$2.50

(Muhl '63) Wisteria violet self including beard. Standards closed, falls wide and flaring. A M '66.

MARIONETTE \$5.00

(O. L. Brown '65) 30", standards light blue-violet, falls deeper with orange beard. All petals wide, extremely ruffled and flounced and very attractive.

MARQUESAN SKIES \$12.50

(Blocher '67) Light lavender-blue with strong red beard. Flowers are nicely ruffled and carried on well branched stalks. From pink and blue breeding. H M '68.

MARSHMALLOW \$15.00

(M. Olson '67) Wide flaring white with bright gold shoulders and a gold beard. Nicely formed, large rounded flowers of very heavy substance. H M '68.

MARTEL \$2.50

(Muhl '62) Dark amaranth blend, the smooth falls flushed claret-red and rosy violet. Good size, width and ruffling. A M '65.

- MATINATA** \$15.00
(Schreiner's '68) Fine, large deep violet self including the beard. Beautifully formed flowers on tall well branched stems. H M '69.
- MAUDIE MARIE** \$7.50
(Tompkins '65) Standards are rich cream flushed gold. Semi-flaring falls are white with wide gold hafts and lacy gold edge. Tangerine red beard.
- MAY MELODY** \$5.00
(Hamblen '65) Closed standards are pink flushed yellow; flaring falls are milky white bordered with yellow and lighted with a red-tangerine beard. A M '69.
- MAY ORCHID** \$5.00
(O. Brown '64) Rich, deep red-orchid self with lighter area about the bright carmine beard. Plenty of ruffles with a touch of lace. Good branching. New color to brighten your garden.
- MEDITATE** \$10.00
(J. Ghio '67) Wide, much ruffled cool white of classic form with a hint of blue in the heart. Tall, well branched stalks. H M '68.
- MENEMSHA** \$12.00
(Corey '66) Smooth blend of yellow, pink and apricot creates a burnt orange effect. Full ruffled flowers with closed standards and semi-flaring falls. Low growing, 30 inch.
- MERRY HEART** \$4.00
(Deforest '65) Large, ruffled greenish white with red beard.
- MIDWEST MORNING** \$7.50
(Gaskill '65) Large light pink self with red beard. Closed standards and semi-flaring falls. A commanding iris. H M '65.
- MILADY** \$10.00
(Moldovan '66) Deep, blue pink with good substance and tangerine beard. Ruffles and semi-flaring falls. H M '67.
- MILESTONE** \$8.00
(Plough '65) Standards are rich butterscotch gold; falls are purple with brown hafts and blue blaze below the orange beard. All petals nicely ruffled. Well balanced flowers. A M '68.
- MOON RIVER** \$2.00
(Sexton '63) Antique gold self with very smooth coloring. Well branched and vigorous grower. A M '66.
- MORNING BREEZE** \$5.00
(Fay '63) Large ruffled blue-orchid with tangerine beard. H M '64.
- MOUNT REPOSE** \$5.00
(E. and A. Watkins '64) Light lavender blue with very wide horizontal falls. H M '65.
- MULBERRY WINE** \$7.50
(Moldovan '66) Bright self of magenta with white beard tipped yellow. Full ruffled standards and wide, fluted, flaring falls. 30 inches. A M '69.
- MUSIC HALL** \$15.00
(Hamblen '67) Luscious peach-pink with deeper toned beard. Large flowers with ruffles, substance and lovely form. H M '68.
- MUSIC MAKER** \$3.50
(D. Waters '63) Lovely sky blue self with extreme ruffling. Flowers are large and beautifully formed. A M '66.
- MYSTIC MOOD** \$10.00
(Ghio '67) Light blue-lavender standards, darker blue-lavender falls, textured darker. Large, ruffled flowers; excellent branching. H M '68.
- NEW MOON** Net \$15.00
(Sexton '68) Magnificent new light yellow self. Huge ruffled flowers displayed on tall well branched stems. H M '69.
- NIGHT HERON** \$12.00
(Tucker '67) Standards are light blue heavily infused with dark blue. Falls are light blue fading to smoky white. Bloodlines here for good reverse blue amoenas. H M '68.
- NIGHT SONG** \$5.00
(Luihn '65) Violet-black self with a matching beard. Desirable form, ruffles and good branching. H M '66.
- NINEVEH** \$5.00
(K. Keppell '66) Standards magenta toned violet; falls blended magenta and tan, rust brown beard. Entirely different coloration. Rounded flowers are flared. Very prolific and vigorous. H M '67.

- NOB HILL** \$3.50
(Gaulter '66) Medium yellow with amber overlay and deeper amber shoulders. Beard is deep amber. Large flaring flower of good substance on tall well branched stalks. H M '67.
- NORMANDIE** \$10.00
(Gaulter '68) Large, lightly ruffled and crimped lavender-blue shading to near white in center of falls. Light tangerine beard. Vigorous, midseason.
- NORTHERN AIRE** \$3.50
(R. Goodrick '65) Fluted ruffled light blue self with domed standards and flaring falls. H C '64.
- NORTH PACIFIC** \$3.50
(Schreiner's '66) Lovely shade of blue with white beard. Large flowers show very blue in the garden.
- OASIS** \$8.00
(J. Ghio '67) Medium size flowers of yellow-green with blue infusion in the falls. Lightly ruffled flowers; good growth habits. Proving to be a good parent for greens.
- OCEAN SHORES** \$20.00
(Plough '67) Standards light blue at base paling toward tips. Falls cool white with pale blue throat; orangy beard. Large, lightly ruffled, heavy substance. Good stalk. H M '68.
- OLYMPIC JEWEL** \$8.00
(F. Smith '66) Ruffled, domed white standards; lightly ruffled lavender falls with pale yellow beard. Jaunty, flaring flowers are nicely poised on well branched stalk. H C '64.
- OLYMPIC TORCH** \$2.00
(Schreiner's '58) Brilliant golden bronze of large size. Ruffled flowers are borne majestically on tall, well branched stalks. A M '60.
- ORAGLOW** Net \$20.00
(Julander '68) Bright golden orange self which seems to be closer to true orange than others in this class. Should be excellent for breeding. H C '67.
- ORALEE** \$3.50
(DeForest '64) Large, flaring ruffled self of medium orange buff-apricot. Smoothly blended, clean and of good substance. Tall stalks.
- ORANGE CHARIOT** \$5.00
(O. Fay '64) Lightly ruffled orange apricot self with intense tangerine beard. H M '65.
- ORANGE PARADE** \$3.50
(Hamblen '61) Vivid orange bicolor, moderately ruffled. Highly rated and much in demand. A M '64.
- PACIFIC SANDS** \$15.00
(Plough '67) Ruffled gray green iris with pink infusion in center. Beard is tangerine tipped blue gray. Different. From all green breeding.
- PACIFIC WATERS** \$12.00
(Tolman '66) Ruffled and rippled light lavender blue with light lemon beard. Tall and well branched. H M '68.
- PALISADES** \$5.00
(Plough '64) Standards are pink and tangerine; falls are pink, apricot orange and yellow. Beard is bright tangerine; an iris of charm and quality. H M '66.
- PARISIAN BLUE** \$5.00
(Schreiner '65) Wide petaled azure blue with size, ruffling, substance and nice form. Tall, well branched stalks. H M '66.
- PATRICIA CRAIG** \$4.00
(Craig '62) Large, ruffled white with heavy substance and fine branching. H M '63.
- PERKY MISS** \$3.00
(Frances Smith '65) Slender, well branched stalks display an abundance of delightful pastel blue four inch flowers. A clump will provide bloom throughout the season. Lovely for arrangements.
- PINK FRINGE** \$17.50
(Rudolph '67) Laced blue pink with deeper pink beard. Appealing form, fair branching and height. H M '68.
- PINK MAGNOLIA** See Introductions
- PIPES OF PAN** \$5.00
(O. Brown '63) Domed standards are cream with orchid blush at base of mid-ribs. Semi-flaring falls are rosy orchid with bright tangerine beard. Tall, well branched stalks carry many buds. Excellent parent. H M '64.

PIRATE TREASURE \$3.00

(J. March '65) Brilliant, heavily ruffled orange-yellow with full tangerine beard. Large flowers have well held standards and wide flaring falls. A real garden treasure. H M '66.

POMOLITA \$15.00

(Knopf '68) Large lavender self with lovely form and good substance.

POMPANO PEACH \$3.00

(Schreiner's '63) Ruffled apricot peach with tangerine beard. Smoothness of color and a lacquer like finish are pleasing traits of this attractive iris. H M '64.

PRETTY POISE \$7.50

(Shoop '65) Large, deep pink with deep pink beard. Wide flaring and ruffled. Well branched and vigorous. H M '68.

PRIMROSE PATH \$3.00

(Framke '63) Large, wide petaled creamy, greenish yellow. Lovely form and an excellent grower.

PRINCE INDIGO \$5.00

(Schreiner '64) Rich pansy violet self with blue-violet beard. Large, nicely formed flowers on tall well branched stalks. A M '67.

QUEEN'S FAVOR \$6.00

(D. Palmer '64) A crisp medium violet self with violet blue beard. Closed standards and wide ruffled falls. Should be a great breeder for blue beards. H M '65.

RADIANT APOGEE \$10.00

(Gibson '66) Ruffled standards are deep yellow. Wide ruffled falls are white in the center banded and brushed gold with brown plicata dotting on the hafts. Deep orange beard. Eyecatching. A M '69.

RADIANT LIGHT \$8.00

(Fay '65) Brilliant orange self with apricot and gold highlights; deep coral beard. Large lightly ruffled flowers have smooth texture and semi-flaring falls. H M '66.

RADIANT SUN Net \$17.50

(Hamblen '68) Broad petaled, ruffled buttercup yellow with tangerine bread. Gold dust sparkle, well branched stalks. H M '69.

RAINBOW VALLEY \$5.00

(Plough '65) Standards are buff pink; falls are pastel orchid with border of buff pink; beard is golden orange. All petals heavily ruffled. Three branches and terminal. H M '66.

RASPBERRY WHIRL \$4.00

(O. Brown '62) Ht. 36" — Smoky rose with tangerine beard tipped rose. Domed standards are very ruffled with lightly crimped edges. The arched falls are wide and fluted. H M '63.

RIBBON ROUND \$3.50

(Tompkins '63) Large white ground plicata with bright blue markings. Standards are ruffled and domed, with wide border. Falls are wide and clean with narrow border and creamy beard. Branching is excellent. A M '66.

RIPLING WATERS \$3.00

(O. Fay '61) Lovely blend of blue-orchid and cream with a tint of pink. Beautifully formed flowers are laced and rippled; tangerine beard. Outstanding! Dykes '66.

ROSEANNE \$6.00

(Plough '65) Rich orchid purple with a pink glow; red beard. Wide, ruffled flowers are semi-flaring. H M '66.

ROSECREST \$2.00

(Hall '63) Soft flesh pink shading to bright rose-peach along the margin of both standards and falls. Ruffled and fluted. H M '65.

ROSES IN SNOW \$10.00

(Noyd '66) Laced snowy white with bright red beard. Wide semi-flaring falls and well held standards. Good branching. H M '68.

ROUGE REX \$10.00

(F. Judy '66) Lighty laced erythrite red with falls a bit deeper. Rumored to be giving some fine red seedlings.

ROYAL GOLD \$17.50

(Hamblen '66) Intense smooth buttercup yellow self with deep orange beard. Closed standards, arched flaring falls. Lightly ruffled, non-fading; many buds give a long period of bloom. A M '69.

ROYAL HERITAGE Net \$20.00

(Luihn '68) Rich royal purple with velvety texture and matching beard. Ruffled, wide petals, good branching. H M '69.

ROYAL ORBIT \$5.00

(Craig '64) Huge pansy purple of excellent substance and good qualities.

ROYAL RANSOM \$2.50

(D. Palmer '62) Rich golden yellow self with heavy matching beard. Lightly ruffled, wide, semi-flaring falls. Excellent substance. Vigorous habit.

ROYAL TOUCH \$12.00

(Schreiner's '67) Lovely pansy violet with matching beard. Wide, full petals of smooth texture and good substance. Branching good. H M '68.

RUFFLED DREAM \$3.00

(E. Smith '63) Lovely ruffled and frilled cream with soft yellow beard. Excellent branching.

SABER DANCE See Introductions

SABLE ROBE \$7.00

(P. Cook '66) Near black, the standards lightly tinged violet; deep violet beard. Lovely form, good substance and 36 inch height. H M '67.

SAN LEANDRO \$15.00

(Gaulter '68) Pale lavender to slate blue with tangerine beard. Large, lightly ruffled, good branching. H M '69.

SASHAY \$5.00

(Plough '64) A bright new color, fuchsia red with saturn red beard. Large flaring flowers have great carrying power.

SEABORNE \$7.50

(D. Palmer '65) Large ruffled medium blue with heavy substance and pleasing form. Standards are tightly held and falls flare horizontally, lemon beard. Good branching. H M '66.

SEASHELL MUSIC \$5.00

(Ernst '65) Large, creamy white etched with blending of rose and copper in subtle tones. Tall and personable.

SEASIDE \$15.00

(O. L. Brown '67) Huge heavily ruffled flax blue self with domed standards and extra wide, semi-flaring falls. Beard is light yellow tipped blue. Leather like substance, tall stalks, many buds. H M '68.

SECRET AGENT \$7.50

(S. DuBose '66) Conical standards are a blend of greyed olive and purple. Flaring falls of greyed olive cream with olive hafts; dark blue beard tipped with bronze.

SILVER TRAIL \$10.00

(O. L. Brown '66) Smooth lobelia blue with matching beard. Large flowers have nicely closed standards and ruffled, broad hafted falls. At times there is a fine silver edge. Sturdy stalks with three way branching. H M '67.

SILVER WEDDING \$12.00

(R. Brown '66) Ruffled, nicely formed white with glistening finish. H M '67.

SING ALONG \$2.00

(Plough '63) Nicely domed standards are white with a slight infusion of yellow at midrib. Canary yellow falls are wide and flaring; beard is deep gold. H M '64.

SKYVIEW \$22.00

(O. L. Brown '69) Non fading gentian blue with blue-white beard. Ruffled flowers have domed standards and rippled flaring falls. Tall, excellent branching and many buds. H C '68.

SKYWATCH \$15.00

(C. Benson '64) Huge, smooth lavender self with ruffled, broad petals. Strong stalks. In demand. A M '67.

SNOWLINE \$10.00

(Schreiner's '68) Standards white, falls creamy pink with deeper veining. Good plant habits and a colorful addition to the pink amoena class.

SOUND OF MUSIC \$12.00

(O. L. Brown '66) Delightfully frilled and ruffled medium wisteria blue self with creamy blue tipped beard. Domed standards and broad, flaring falls. Prolific and showy. H M '67.

SPANISH GIFT \$7.50

(Shoop '65) Bright orange with deep orange-red beard. Wide, ruffled flaring falls. Strong stalks, well branched. H M '67.

SPARKLING CHAMPAGNE \$4.00

(Ernst '65) Huge ruffled flowers of champagne color with deeper plicata dotting on hafts. Wide flaring falls. Excellent branching. H M '66.

STEPPING OUT \$4.00

(Schreiner's '64) Large beautifully ruffled plicata with snow white ground and pansy violet margin. Standards well closed and falls semi-flaring. Excellent branching. A M '67. Dykes '68.

STERLING SILVER **\$2.50**

(S. Moldovan '63) Extremely ruffled and fluted light blue-violet. Nicely domed standards and flaring falls with yellow tipped white beard. A M '66.

SUNLIT RIPPLES **\$10.00**

(O. L. Brown '66) Firmly held standards of light canary yellow with deeper crinkled edges. Broad horizontal falls are light cream with extremely fluted edges of light yellow. Excellent substance and long season of bloom.

SUNSITE **\$6.00**

(Plough '64) Rich intense gold self with deep orange beard. Flowers are large, nicely ruffled and stalks are well branched. H M '65.

SUPERCALIFRAGILISTIC **\$20.00**

(C. Blocher '67) Large rosy lavender with pink beard; excellent substance. Spectacular.

SUPERED **\$6.00**

(Craig '64) Large, bright mineral red, nicely formed. Strong grower and bloomer.

SWAHILI **\$8.00**

(Plough '65) Conical standards are red-black; wide falls are red-black with a dark brownish beard. Well branched. A M '69.

SWEET ONE **\$5.00**

(Plough '64) Crisp, clean light pink with coral beard. Ruffled, flaring and lightly laced. Medium sized flowers on well branched stalks.

TAHITI SUNRISE **\$2.50**

(Ernst '63) Warm pink with salmon tones and heavy red beard. Wide lightly ruffled petals with good substance. Good branching, vigorous. H M '65.

TAWNY MINK **\$8.00**

(Schreiner '66) Rich golden yellow self with influence of "real gold." Very wide flaring falls. Excellent branching and good height. H M '67.

TEA APRON **\$2.00**

(El Dorado '61) Ruffled, snowy white ground plicata. Standards have a narrow edge of blue-violet, falls are more heavily marked; crests solid violet. Charming. A M '64.

THRESHOLD **\$10.00**

(Hamblen '68) Large, wide petaled blue-violet with ruffles and red orange beard. Branching and bud count good. Excellent source for breeding blues with red beards. H C '67.

TILLICUM **\$3.50**

(Plough '64) Creamy white with yellow infusion in standards. Ruffled flaring falls have yellow hafts and border.

TINSEL TOWN **\$20.00**

(Tompkins '67) Large, beautifully formed flower with warm white standards and wide falls of white with hafts brushed gold and beard to match. H M '68.

TOMKI **\$15.00**

(Knopf '68) Standards lavender brown, falls deeper lavender with brown rim, deep yellow beard. Ruffled, nicely formed flowers.

TRITON **\$3.50**

(Julander '63) Rich medium blue self with ruffles, good width, substance. H M '64.

TUXEDO **\$6.00**

(Schreiner '65) Velvety deep blue-black self free of haft venations. Wide flaring falls and well held standards. Excellent branching. H M '69.

ULTRAPOISE **\$4.00**

(Noyd '62) Bright straw yellow with a tangerine beard. Heavy substance, ruffles, and good branching all add up to make this flaring iris a real beauty. A M '65.

U. S. S. CONCORD **\$7.00**

(C. Blocher '65) 30 inch. Dark ultramarine blue self.

VIOLET MIST **\$3.00**

(O. L. Brown '65) 28 inches. Very frilled medium light violet with infusion of amber in the heart and light yellow beard. Wide, horizontal falls are heavily fluted with edges lightly laced. Flowers are crisp and lovely.

WAR LORD **Net \$17.00**

(Schreiner's '68) Finest red that we have grown. Rich, deep garnet-red self with nicely held standards and wide, semi-flaring falls. Intricately ruffled, velvety finish. H M '69.

WENATCHEE SKIES \$3.50

(Noyd '63) Intense sky blue self with yellow beard tipped white. Nicely ruffled semi-flaring form. Fragrant. A M '68.

WENATCHEE VALLEY \$8.00

(Noyd '65) Ruffled standards are pink edged tan. Flaring falls are creamy tan with rosy tan haft and tangerine beard. A lovely formed, wide petaled iris. H M '66.

WEST COAST Net \$15.00

(Knopf '68) Brilliant gold with lovely form and substance. Lightly laced petals, bright orange beard. Well branched stalks. H M '69.

WESTERN HOST \$20.00

(Babson '68) Beautifully ruffled, wide petaled medium purple. Branching and bud count excellent. H M '69.

WHITE FROSTING \$2.50

(D. Palmer '61) Crisp white self including beard. Falls broad and semi-flaring. The ruffled flowers have a frosty sheen. H M '63.

WHITE KING \$5.00

(Knopf '66) Huge, ruffled warm white with a cream glow in the heart. Tall, well branched stalks. H M '68.

WHITE PRIDE \$2.50

(C. Branch '62) Lovely white with light lemon beard. A large ruffled flower with wide fluted falls and heavy substance. Branching good. H M '63.

WILD APACHE \$5.00

(Gibson '65) Rich Cinnamon and violet plicata with standards nearly solidly colored, orange bronze beard. Beautifully formed flower with copious ruffling. H M '66.

WILD GINGER \$2.00

(Gibson '62) Standards almost solid ginger brown. Falls, cream ground with brown plicata markings. Standards ruffled and well domed; falls are arched and ruffled. A M '65.

WILD MUSTANG \$15.00

(Z. G. Benson '66) Smooth, red blend with infusion of plum in the conical standards and undertones of blue-violet in the falls. Branching good. H M '67.

WILD PEACOCK \$4.00

(Muhl '64) Standards rosy wine with tan infusion. Falls deeper wine flushed bright violet with hafts of brown. Beard is orange; form is ruffled and flaring. H M '65.

WILD PLUM \$3.50

(Plough '63) Large, ruffled flowers with standards of brownish-purple. Semi-flaring falls are lighter with a darker brownish band. Tall, well branched and different. H M '66.

WINE AND ROSES \$3.00

(D. Hall '63) Good standards of rose pink. Falls of deep violet purple with rose pink border and red-orange beard. All petals wide and ruffled. A M '66.

WINTER OLYMPICS \$4.00

(O. Brown '63) Beautiful white self including beard. Domed standards are ruffled and firmly held. Extra wide falls are intensely ruffled and gracefully arched. Large flowers of heavy substance. Near perfect branching. Fertile both ways. A M '66, Rees Award '66, Dykes Medal '67.

WINTER PAGEANT \$12.50

(D. Palmer '66) Ruffled, wide, crisp white self. Domed standards, flaring falls and well branched. H M '67.

WINTRY NIGHT \$7.50

(Pond '66) Blackish purple with white infused in base of standard and down around the beard which is a deep bluish brown. Unique and appealing. H M '68.

WISHING HOUR \$10.00

(Corlew '67) Much ruffled blend of blush pink and yellow with heavy orange beard. Domed standards and wide flaring falls. H C '66.

WOODLAND ROSE See Introductions

XMAS FIRES \$6.00

(Craig '64) Large, broad smooth black-red. Prolific bloomer and fine grower. H M '67.

YES SIR \$4.00

(Noyd '65) Deep orange-yellow self. Medium sized flowers, very bright. H M '66.

Brown's Sunnyhill Gardens

Route 4 — Box 26
 WALLA WALLA, WASHINGTON 99362

Date

Name

Street or R.F.D.

Post Office State Zip.....

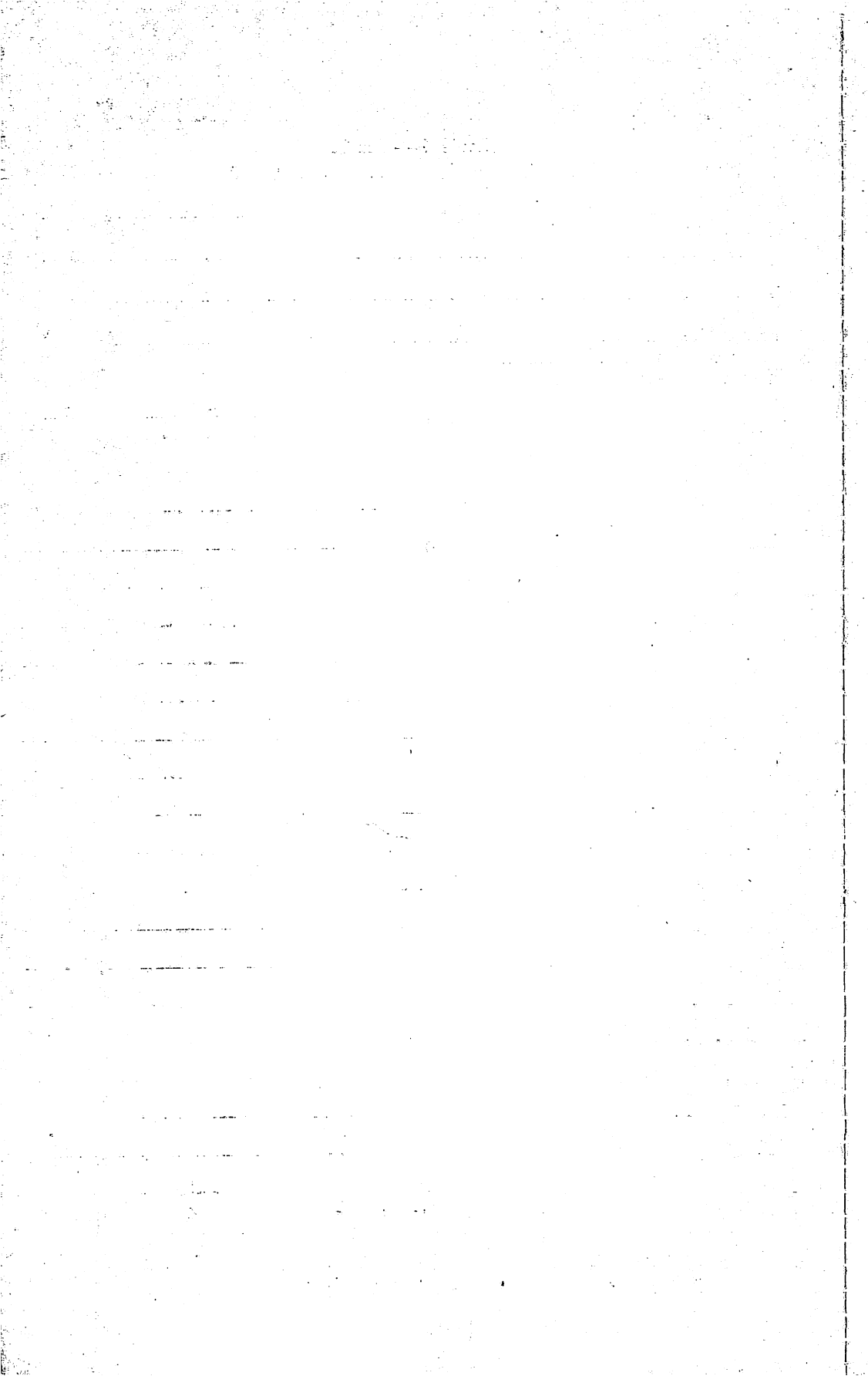
May we substitute?

If so, name second choices

Amount Enclosed \$

Quantity	Name of Variety	Amount
1		
2		
3		
4		
5		
6		
7		
8		
9		
10		
11		
12		
13		
14		
15		
16		
17		
18		
19		
	Postage and Packing	.50
	Continue order on other side	TOTAL

Residents of Washington State MUST Add 4.5 Percent Sales Tax



CLOSE OUT !! On the following varieties. All retail for \$1.00 to \$2.00.

A BIG SAVING AT SIXTY CENTS (.60¢) each.

MINIMUM ORDER \$7.50

You may include some of these Close Out Varieties with orders from the GENERAL Listing, however the \$7.50 Minimum must apply to TOTAL ORDER

AGATINE (Early red)	GOLDEN VALLEY (Deep gold)
ALLEGIANCE (Navy blue)	GOLDEN YEARS (Yellow & white)
AZURE ACCENT (Lt. blue, blue beard)	HENNA STITCHES (Henna plicata)
BLACK CHARM (Red-black)	HENRY SHAW (Ruffled white)
BLACK NITIE (Blue black)	HOLIDAY MOOD (Plic., yellow-buff)
BLACK SWAN (Large, red-black)	HONEYBIRD (Golden tan)
BLACK TAFFETA (Short, blue black)	JUNGLE SHADOWS (Smoky violet)
BRASILIA (Henna-red)	LYNN HALL (Pink)
BRIGHT CLOUD (White stds., blue falls)	MADMOISELLE (Deep rose, brn. hafts)
BRIGHT FORECAST (Full yellow)	MELODY ROSE (Rose-pink)
CEDARCREST (Laced henna plicata)	ORANGE CRUSH (Orange)
CELESTIAL SNOW (Ruffled white)	PACIFIC PANORAMA (Med. blue)
CURL'D CLOUD (Ruffled white)	PLICADILLY (Violet plicata)
DANCER'S VEIL (Large violet plicata)	POET'S DREAM (Ruffled cool white)
DARK FURY (Dark violet)	RED SLIPPERS (Red self, short.)
DAWN FLIGHT (Flaring pink)	RIMFIRE (Red plicata)
DOCTOR K (Golden brown)	ROSE RHYTHM (Rose-pink)
DOT & DASH (Dark blue plicata)	RUBY LIPS (White, red beard)
ELEANOR'S PRIDE (Tall light blue)	SORORITY GIRL (Large pink)
EMERALD FOUNTAIN (Green blend)	SPARKLING WATERS (Light blue)
FIRENZE (Med. violet, tangerine beard)	SUNNYDALE (Light yellow)
FULL DRESS (Laced yellow)	SYMPHONY (Silvery blue)
GOLD CARGO (Ruffled yellow)	WAYWARD WIND (Tan blend)
GOLDEN RIOT (Bright yellow)	WHOLE CLOTH (White & blue amoena)

Brown's Sunnyhill Gardens

ROUTE 4 — BOX 26

WALLA WALLA, WASHINGTON 99362

(Return Requested)