

AMERICAN IRIS SOCIETY
REGION 15

SOUTHERN CALIFORNIA • ARIZONA

SPRING 1989

NEWSLETTER



HI-DESERT

SAN FERNANDO VALLEY

SOUTHERN CALIFORNIA INLAND

SAN DIEGO IMPERIAL COUNTIES

SUN COUNTRY

TUCSON

Gayle

This Newsletter is published in the Spring and Fall each year. It is distributed to all member of the American Iris Society residing in Arizona and Southern California. Annual subscription rate to others is \$1.50. Editorial office is at 5244 W. Sunnyside Dr., Glendale, AZ 85304

OFFICERS

Ralph Strane, RVP
7403 Archibald Ave.
Rancho Cucamonga, CA 91730
(714) 987-2835

Bobbie Shepard, Asst. RVP
3342 W. Orangewood
Phoenix, AZ 85051
(602)841-1231

Jeanne Clay Plank, Sec.
8426 Vine Valley Drive
Sun Valley, CA 91352
818-767-5512

Pete DeSantis, Treas.
7727 Rhea Ave.
Reseda, CA 91335
(818) 343-3755

COMMITTEE CHAIRMEN

Judge's Training
Ralph Conrad
32377 Leprechaun Lane
Bonsall, CA 92003

Membership
James H. Jones
2211 Sparrow Hills Lane
Lakewood, CA 90717
(213) 634-5596

Publications
Vicki Day
5244 W. Sunnyside
Glendale, AZ 85304

PRESIDENTS OF LOCAL CLUBS

Hi- Desert Iris & Daylily Soc.
Cal Bostwick
5132 Pear Blossom Highway
Palmdale, CA 93550
(805) 947-7548

San Diego-Imperial Counties IS
Dorothy Driscoll
6338 Lake Athabaska Place
San Diego, CA 92119
(619) 463-6700

Southern California Iris Soc.
Lynn McIlwain
626 N. Lyall Ave.
West Covina, CA 91790
(818) 332-8354

Tucson Iris Society
Leslie Follett
901 W. Las Palmas Dr.
Tucson, AZ 85704
(602) 887-4398

Exhibitions
Joe Daughterty
5572 Amethyst Stree
Rancho Cucamonga, CA 9170

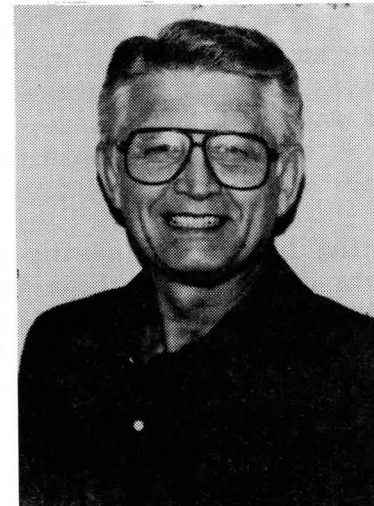
Nominating
Bob Brooks
965 Salem Street
Vista, CA 92084
Unlisted

Youth Committee
Open

Inland Iris Society
Jay Conklin
15391 Purdy Lane
Westminster, CA 92683
(714) 893-6870

San Fernando Valley IS
Bill Rinehart
22218 Schoenborn Street
Canoga Park, CA 91304
(818) 346-1912

Sun Country Iris Soc.
Gloria Beatty
7339 W. Turney Ave.
Phoenix, AZ 85033
(602) 846-0412



Spring is here! The time we wait for all year. I don't know if it is because I am getting older or what, but it seems that a year goes by in about 15 days. I can remember when a summer seemed like forever. Now I look the other way for a second, and it is over. We are all busy at any rate getting ready for the bloom season with all the shows, treks and other activities that come with it. I have visited several of the clubs and it is exciting to see all of the many activities that are being planned for the members. I am sure that no one can say that they are not getting their money's worth if they are taking advantage of what is being offered.

The Region 15 officers met in January and got the new Treasurer, Pete DeSantis and the new Secretary, Jeanne Plank installed and working. Vicki Day, who has done such a great job as Treasurer for the past three years is now the Newsletter Editor. This is her first edition.

The Board voted to print a brochure on the Region and its local societies to have at flower shows, fairs and other places and events where iris lovers might be. We hope to have it available by April, so if you have need of some, write or call.

As Region RVP, I attended the AIS Fall Board Meeting in Fort Worth, Texas in November. It was very interesting to see the inner workings of AIS. It is an eye-opener to see how an organization of this size is run. I am looking forward to the sessions in Memphis.

I would like to encourage all of you to attend the Trek that Inland Iris Society is giving on April 21 and 22. They are planning some new and interesting programs to make the trek super interesting to everyone, even spouses that are not too interested in iris. So you all come!!!

All of the affiliation forms have been sent in and it looks as if Region 15 will show some growth this year. This is due mostly to the addition of the new Hi Desert Iris and Daylily Society. We are sure glad to welcome all of these fine people from the Palmdale-Lancaster area.

Looking forward to seeing you all on the trek. As the lights are playing their usual tricks on my iris I don't know how much iris bloom I will have. They think it is April now. But there will be other flowers and you can look at my chickens and birds, so do come! See you then.



**A
GENTLE
REMINDER!**



Region Meeting - San Bernardino, CA
April 21 and 22, 1989

National AIS Convention - Memphis, TN
April 29 - May 3, 1989

MINUTES OF THE FALL MEETING 1988

The meeting was called to order October 8, 1988 at the Stardust Motel in San Diego, CA by RVP Ralph Strane at 8:40 AM.

The minutes were approved as printed in the Fall Newsletter. Treasurer's report was submitted and approved.

Judges Training Chairman, Ralph Conrad reported that we will have ten apprentice judges by January 1989 and recommended that we accelerate the training program to meet the training needs, which could include tutoring sessions in show judging and holding simulated shows to meet these needs. Motion was made and carried to reinstate the Region 15 judges training requirements that were in operation prior to the January 1988 Board meeting.

Reports were then given by each of the Club Presidents on their club concerns and activities.

Bobbie Shapard, Assistant RVP, handed out a sheet to club presidents asking them to list speakers and programs they found well recieved by their clubs and to turn in that list to her by November 1.

Vicki Day, Treasurer, stated that the Certificate of Deposit will roll over on October 18 and asked for disposition. The motion was made and carried to withdraw the interest, deposit that into the checking and then to roll-over the remaining \$5000 into a 6-month CD.

Meeting adjourned.

Submitted by Jeanne Clay Plank
Acting Recording Secretary



HOW TO DOUBLE THE IRIS SEASON IN ONE YEAR

by Ralph Conrad

For irisarian it's quite possible (and highly rewarding) to double the bloom season in a single year. At least that's what LaVerne and I have enjoyed on three occasions, two along with Jimmy Jones, by scheduling a New Zealand vacation to coincide with the annual convention of the New Zealand Iris Society, in mid-Spring, November to early December...for our seasons are opposite each other. The 1988 meeting was at Christchurch, second largest city in New Zealand and considered by many to be more English than England.

Aside from enlarging our coterie of close personal friends (one of the major rewards of being an active irisarian) it has given us the joy of seeing "how it's done" 'way down under by the wonderfully friendly Kiwis.

Their programing is delightfully different from our national meetings, more like our regional treks. Smaller numbers (no crowds), visits more varied and unhurried - more leisurely accomplished. Attendance rarely reaches one hundred. Lunchtime sometimes needs to be double shifted, allowing additional mandering about on foot. You are on your own for dinner (no big banquet), meetings follow this, ending with "supper." Luxurious coaches (their name for buses) easily maneuver the left side of two lane country roads, and manage narrow entries into and out of out-of-the-way estates where their "tea" is served to include tempting spreads, along with adequate time for casual and unhurried walking about the gardens and general visiting. Programs vary from year to year, as city hosts choose.

Some of these stops may have few if any tall bearded iris, but all gardens are designed in the "English School" style, colorful perennial borders on a winding pattern and varied tree and shrub background. This is not to suggest that many tall bearded are not seen, but there does not appear a rash of "must have the latest introduction, guest plantings and plots of iris only." Rather amazingly, many of the iris sections bloom at the same time.

From our observation, we concluded that most of their members are also botanical society members, (expert and/or amateur botanists) and probably members of other flower organizations. Their iris interest spreads to include as many sections of iridaceae as can be tucked into even a small garden or at least discussed in intelligent back and forth conversation. There were very few Spurias and even less Louisianas seen.

We were delighted to find Pacificas (Pacific Coast Natives) in practically every home garden. They do exceptionally well in most New Zealand areas. Cultivation and hybridizing them has been underway for many years, with some interesting introductions. A variety, including species, is included in the group's seed pool, a long list actively participated in by the membership.

Judging of iris for awards follows the English Iris Society program, done only in test gardens. New Zealand and Australia now have their own Dykes Medal plus individual awards. Each has a test garden, while votes for the DM are accumulated together.

Had it not been for LaVern's brother, Clarke Cosgrove's enthusiasm for New Zealand and his iris acquaintances there, we two might never have had the zeal to visit. Yet the country alone is a wondrous one to tour, for so much of nature's most exciting terrain is packed into a relatively small area.

It has been suggested that if you placed a goodly portion of the Norwegian fiords, the Austrian Alps, the mountain lakes of Switzerland and Scotland, glaciers of the Icefields of Western Canada, natural tropical growth san humidity and great English gardens into an area the size of California - that would be New Zealand. To which we might add the coastline of our Highway One, redwoods (yes, they have plantings of great size in less than a century of growth from seedlings) and the emerald fields of Ireland, but dotted with 60 million sheep against a population of just over three million people.

Scenery is inspiring to say the least! Rivers run pure and the general environment is doggedly protected by ever watchful New Zealanders. There is no roadside trash to be seen.

Despite all this, it has been the relationship of our old and new iris friends there that has made us yearn to return yet another time. This advantage has not been limited to New Zealand, of course, but this is a New Zealand story. We are continually reminded that our common iris interest has been the catalyst for developing close friendships during the past four plus decades of our iris activity.

To have been privileged to enjoy a double iris season last year would have been sufficient, but to have the President of the New Zealand Iris Society, an old friend of ours, take time out to furnish his car and drive us more than 3000 miles criss-crossing most of his country on a personally conducted tour, was more than we probably deserved. That's the kind of advantage old friendships bring.

New Zealand friends, the old ones, Hec Collins, and our dear Dora Sparrow, who lives in Christchurch, and the new friendships seem to strengthen with each visit. We relish that and look forward eagerly to more opportunities.

To sum up...Hooray for iris! And three cheers for the expanding iris friendship circle!



SUCCESS

When we meet, the beginning of great things is possible.

When we speak and exchange ideas, progress is possible.

When we think and plan, a bright future is possible.

When we work together and share our know-how, success is possible.

SPRING TREK

The anticipation of the 1989 Region 15 Spring Trek is building with excitement. In every way we are making this the best Trek ever from the standpoint of the favorable price of the Trek and Banquet to the little things that will make this the most memorable of all.

We will headquarter at the Maruko Hotel and Convention Center in San Bernardino. The Maruko Hotel is a relatively new hotel and is run by people who really come to work to please their patrons. I assure you that you will be impressed - the accommodations are first rate.

On Friday in the Sierra Room our judge's training will take on excitement and interest as well as education that you have never before experienced. Ralph Strane's troupe will perform "The Follies of Iris Judging". The theme of this skit will focus on the activities and actions that no self respecting Iris Judge would be "caught doing". Hilda Crick of the American Iris Society will follow with a more serious side of judge's training.

I will take you on an imaginary tour if you will now board the imaginary bus. It's 8:00 on the Saturday we've all waited for. Each bus leaves at slightly different times. One has already left by 7:30. Each bus runs a different route so that there will not be competition for space in the smaller gardens. The imaginary bus is leaving now. We are on our way to the Romozi Garden. This is where Joe and Fran Romozi spend their time iris-ing - taking care of nearly one thousand iris on approximately two acres.

Our next stop takes us to the Strane Garden where Maxine directs the activities. You will find a genuine 1920's Sears catalog house, complete with period furniture and other antiques that Ralph and Maxine have picked up in the extensive travels. These iris are recent introductions (80 and above). They include Tall Bearded, Pacificas, Louisianas, Spurias and many seedlings of Ralph's pollen dabbling. Other landscaping include fruit trees, roses, wisteria and his ubiquitous daffodils. Don't forget to stop off and see his award winning pheasants and Bantam chickens.

Our next stop will be Opici's Winery where you may sample their vintages or browse the beautiful setting nestled among olive trees, grape vines and honeysuckle beneath the towering snow capped San Gabriel Mountains. Opici makes their wine in Sonoma County in northern California and this is their only retail outlet in California. Opici also imports wine from France and Italy. You may sample and purchase wine of your choice.

We are off to the Daugherty Garden just up the street at the base of Cucamonga Peak, the ones with the snow on the tops. Joe gets his directions on landscaping from Odi. The garden is dominated with iris including over five hundred Tall Bearded as well as Louisianas, Japanese, Spurias, Medians, Arils and Species. Joe and Odi frequently can be found sitting near the peaceful water fountain admiring the myriad of colors that light up their back yard.

A short bus ride takes us to the Rains Museum where we will enjoy a delightful lunch prepared especially for us by Bob Vogel who is a professional caterer and Inland Iris Society member. The Rains Museum was the first fired brick home built in Southern California. John and Merced Rain's home was built in 1860 from bricks made from the red clay on site. The flat roof was waterproofed by tar from Brea Pits topped with flat bricks. The home was laid out with a fireplace in nearly every room with an open flume carrying water from springs through the kitchen, patio, under the house into the orchard. It is furnished with furniture of the period. Make it a point to go through the house (museum). Oh, one more interesting point; in 1971 a local school teacher saved the house from destruction by literally standing steadfast in front of a marauding bulldozer which had already dealt a corner of the house minor damage. This heroic salvation of the Rains house was accomplished by none other than Maxine Strane.

Back to the present! We are on our way to Cal-Dixie Gardens, so sit back and enjoy the hour drive to Riverside. Herb and Sara Holk maintain over a five-acre paradise of Tall Bearded Irises. You will also find Siberians, Arils, Medians, Japanses, and Spurias. Cal-Dixie ships to all points of the globe and as you will see, has the inventory to support it. The sight in



INLAND IRIS SOCIETY

IRIS SOCIETY MEMBERS

Registration for the 1989 Iris Spring Trek

The Inland Iris Society invites you to register for the 1989 Region 15 Spring Trek and Banquet to be presented April 21st and 22nd.

Headquarters at the Maruko Hotel and Convention Center, 295 North E Street (between 2nd and 4th) in San Bernardino, California, 92401. Take the Interstate 215 (going toward Barstow) off at Second Street, to the right and proceed to E Street. Telephone (714) 381-6181.

We have secured a block of rooms at the following rates:

Single and double \$50

3 or 4 persons \$60

Please add 8% for tax. Cost of the room is not included in the Trek/Banquet reservation.

Reservations can be made at your request with Inland Iris Society for April 21 and 22 Judge's training, Trek, and Banquet complete for \$37.50 each person. (\$45 for late reservations made between April 7 and April 14). A partial for Judge's Training and Trek is \$20 and a partial for the Banquet is also \$20. (\$25 for late registrations made between April 7 and the deadline, April 14)

Reservation for complete Training,
Trek and Banquet \$37.50 (\$45 for late) \$_____

Reservation for partial;
Training and Trek \$20 \$_____
(\$25 for late)

Banquet only \$20 \$_____
(\$25 for late)

Total Amount Enclosed \$_____

Please print name:

First _____ Last _____ Club _____

Please make check payable to Inland Iris Society and mail application and check to John Reinschmidt, 16606 Barbee Ave. Fontana, CA 92336. Phone (714) 822-6191.

their garden is truly breathtaking and somewhat overwhelming. Imaging the vast wheat fields of Kansas - this is similar except with Iris.

A short ride further will take us to Hamner's Garden where Bernard and Celeste got tired of growing potatoes and started growing Iris. Have you ever noticed how much their rhizomes resemble potatoes? Now you know why. You will find many of Hamner introductions as well as new introductions by other prominent hybridizers. Don't forget to see their seedling patch across the alley. It has more unintroducted seedlings than you will find registered iris in most of the other gardens. You will see iris that will be introduced in the future.

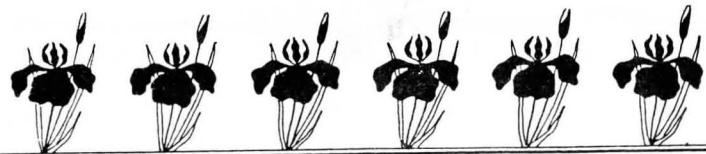
After the ride back to the hotel at 5:00 (depending on the time of your morning departure), you may take advantage of some quiet time, that is unless you would like to go shopping in the huge mall across the street from the hotel. If you would like to freshen up a little or change clothes and you are not staying at the hotel, you may use the Trek Headquarters room.

Don't forget to vote for your favorite seedling and registered iris before 5:30 when the balloting closes. At 6:30 join your newly made friends at the no host bar social hour. The banquet begins at 7:30 in the Evergreen Room. We will learn about commercial gardening from Rick Ernst of Cooley's Gardens in Oregon. On Sunday you are invited to additional gardens that will be of interest. They are as follows:

Toby Kotner
Bob Hubley
Beverly Williams
Lillian Champion
Richard McCullough

I sincerely hope that you will be able to attend the 1989 Trek and Banquet. You will be delighted at all you will gain from this experience that will remain as a cherished memory the rest of your life.

Joe Daugherty



INLAND IRIS SOCIETY

HI-DESERT IRIS AND DAYLILY SOCIETY

Since it's beginning, not quite one year ago, the Hi-Desert Iris and Daylily Society has come a long way toward getting over the bumps and pit-falls of any new club. A permanent meeting place and schedule has been established and the treasury bolstered, thanks to plant sales of donations from Region 15.

Great interest in growing iris in this booming desert location has been generated through the many wonderful programs presented at the monthly meetings. These included instructions by President Cal Bostwick and Vice-President Beulah Bobinson on how, where, and when to plant and label rhizomes, and grower Billies Stone's directions on what to do with an overgrown Iris bed. Last month Pat Girl gave a demonstration on the use of cut flowers and a variety of green and dried vegetations to achieve beautiful arrangements for home and show. At that meeting Cal also showed pictures of his trip to Australia and the lovely gardens there.

Spring activities get started by guest speaker Ralph Strane who will visit for the second time and prepare the group for it's first growing season. The Hi-Desert community plans to participate in several garden treks, including Region 15's Spring Trek hosted by the Inland Iris Society, as well as one local trek. Also planned is our first local show, and another plant sale of growing Iris which have been nurtured over the winter by Chuck Linn. To prepare ourselves for this, Pete DeSantis of the San Fernando Valley Iris Society will give us an instructional talk on grooming both plant and bloom for show.

Annabelle Farmer



The annual rhizome sale opened this season's activities in early October. Held again at Von's Sunnymead Pavilion, the two-day event was profitable but gave evidence that a different site and a different public might increase sales.

The Society selected as a new meeting place, the spacious and easily accessible facilities of the San Bernardino County Museum. Initial programs dealt with practical gardening matters. In November, members Bernard Hamner and Herb Holk outlined the timing of and application of various fertilizers and pest control chemicals. In December, Dr. Nick Toscano, Entomologist from U. C. Riverside, followed with an illustrated lecture on major horticultural pests in Southern California with particular emphasis on the insects that may plague iris beds.

Many club members live at considerable distance from our meeting place so, as a trial, two of this year's meetings have been set for Sunday afternoons. The first, in January, was a well-attended luncheon meeting at which Ralph Conrad showed slides of the handsome vistas of New Zealand and, with an occasional aside from LaVerne, reviewed their experiences at the iris convention and in traveling down under.

The second such afternoon meeting, which may be of interest to neighboring clubs, will have hybridizer Jim McWhirter talking on the Dykes Medal Winners. Details of this meeting will be sent to other southern clubs in advance of the date.

Two activities have demanded considerable time of board and committees. One, of course, is the Region 15 Spring Meeting and Trek for which reservation forms and additional information are included in this Newsletter. The other is the long over-due revision of the Society's constitution and By-Laws.

At the end of January, the Inland Iris Society unexpectedly lost the services of its two vice-presidents, at least for the Spring season. Society members, however, are a co-operative bunch and have willingly filled-in to take up the responsibilities of these offices.

Corrine Bromberger

SAN DIEGO-IMPERIAL COUNTIES IRIS SOCIETY

We have had a nice calm winter but are now looking forward to the spring bloom and all the activities that go with it.

Our 26th Birthday Party was held in February with Ralph and LaVerne Conrad giving us a rundown on their trip to New Zealand and slides showing the beautiful countryside - from tropical to snow-topped mountains.

March will take us to visit Eleanor McCown in Holtville. This is always a pleasure to see how beautifully her spurias and other plants grow. We will share a potluck lunch and enjoy the weather before it becomes so unbearably hot.

We look forward to the Spring Trek at Inland this year. It sounds like it will really be great. Our Iris Show will be held on April 29 and 30. If the weather will just cooperate, it should be very successful.

Dorothy Driscoll, President



Thank you to all of the contributors to this newsletter for your timeliness. I makes my job much easier when you send your information to me when requested.

A special thanks to Ralph Conrad for his article. I asked him for an article at the last minute and he performed right on time.

Thank you to all!

SAN FERNANDO VALLEY IRIS SOCIETY

As the days lengthen and the earth becomes warmer, spring swiftly approaches and the calendars of irisarians become crowded.

Management of schedules becomes more difficult as local societies within Region 15 interface as never before. This condition calls for a master calendar. The following activities sponsored by SFVIS are cited as possible additions to personal datebooks and offered as personal invitations to any who would enjoy attending.

While members of SFVIS would welcome anyone to their individual gardens at any time, their annual trek, a scheduled visitation of 7 gardens, should entrance irisarians on April 8.

A three-day show will be held at the Promenade Mall in Woodland Hills on Friday, Saturday and Sunday, April 14, 15 and 16. Entrants are invited. Horticulture entries will be judged on Friday morning and artistic arrangements on Saturday.

Rhizomes will be available for purchase on Saturday, April 15 at the show location, at the Sepulveda Garden Center in Encino on Saturday and Sunday, May 20 and 21, and at the Woodland Hills Promenade Mall Friday, Saturday and Sunday, September 8 - 10.

Auctions of rhizomes will occur on July 12 for the benefit of the Region, of beardless iris on November 12 and a combination raffle/auction on August 9. All of these are part of the agenda of the SFVIS monthly meetings held at 7:30 PM, the second Wednesday of each month at the Canoga Park Women's Club.

Other meetings will feature John Weiler, hybridizer, and President of the Reblooming Iris Section of the AIS and Keith Keppel, hybridizer, and past editor of the Bulletin. Please call Bill Rinehart (818)346-1912 for further information and personal invitation.

Bill Rinehart, President

SOUTHERN CALIFORNIA IRIS SOCIETY

The Southern California Iris Society is busily planning two flower shows for this Spring. The first show is April 1-2 at Ayres Hall, Los Angeles County Arboretum, 301 N. Baldwin Ave., Arcadia, CA. This early show is co-sponsored by the Aril Society and will feature all types of iris (arils, early blooming TBs, PCNs, louisiana, spurias, etc.). There will also be an artistic section for flower arrangements - the theme being song titles. This show usually gets a wide variety of iris types entered, with some aril entries from Israel. The second show is April 15-16 and will be at the Santa Anita Fashion Park Mall (corner of Huntington Dr. and Baldwin Ave.) Arcadia, CA. The Mall has been remodeled with lots of skylights. This should display our iris much better, with the natural light giving truer colors. This show is open to all iris types. We will have plants for sale at both shows. Come by and see us!

Also you might want to visit Descanso Gardens during the bloom season. Located at 1418 Descanso Drive, La Canada, Flintridge, CA. Hours are from 9:00 AM to 4:30 PM. There is 4000 square feet of iris beds. Included in the beds are Dykes Medalists, PCNs, arils, spurias, louisianas, species, and of course, TBs. Our club is making an effort to keep this iris planting up to date by adding newer introductions.

For show schedules or other information contact: Lynn McIlwain, 626 N. Lyall Ave., West Covina, CA, 91790 - (818) 332-8354.

Lynn McIlwain, President



Greetings from Sun Country!

How time flies when you're having fun! Here it is time for another Region 15 Newsletter already.

Sun Country Iris Society has been busy...growing, and expanding our educational programs to include lots of color slides and knowledgeable guest speakers. We have had special programs with color slides on Louisiana's, and of course, reports and color slides from last year's Convention. More recently we were pleased to have had Joe Ghio here to tell us "Everything You Ever Wanted To Know About Hybridizing".. a delightful and informative evening. This month we were happy that Glenn Corlew made it back to talk and show us slides of Cherry Lane Gardens...most interesting.

The Sun Country Christmas Party was extremely enjoyable and successful. We were pleased to donate 52 gifts to the needy children at the Crises Nursery.

Perhaps by the time you read this we will be at the Spring Trek in California hosted by the Inland Iris Society. This year, SCIS will be well represented as more and more members are planning to attend.

Think FUN in '91! SCIS has already held the first committee meeting to plan the groundwork for the 50th Anniversary Spring Trek for Region 15 in 1991. Don't miss this one! Great things are being cooked up at this very moment to make the 1991 50th Anniversary Spring Trek for Region 15 a most memorable one.

Our SCIS members are busily preparing for the Aril-Arilbred Exhibit next month to be held again at the Desert Botanical Gardens, followed in April by the Spring Show to be held April 15th and 16th at Valley West Mall, 59th Ave. & Northern, a new location for us this year. And then on to the Convention in Memphis. So there's a lot of planning, lots of anticipation, great enthusiasm, marvelous cooperation and tons of work on our agenda.

I leave you with this reminder...THINK FUN IN '91!

Jeannie Comeaux

BALANCE SHEET AS OF FEBRUARY 4, 1989

BEGINNING BALANCE AS OF 4/23/88

| | | |
|---------------------------|---------|---------|
| Checking Account | 1361.48 | |
| 1 Certificates of Deposit | 5077.56 | |
| TOTAL | ----- | 6439.04 |

RECEIPTS

| | | |
|---|---------|---------|
| Iris Auction Receipts | | |
| Inland Iris Society | 250.00 | |
| San Fernando | 484.00 | |
| San Diego/Imperial Valley | 300.00 | |
| Sun Country | 331.00 | |
| Southern California | 207.00 | |
| Tucson Iris Society | 300.00 | |
| Subtotal Iris Auction Receipts | | 1872.00 |
| Transfer from CD | | 381.29 |
| Interest | | |
| Checking Account | 57.40 | |
| Certificate of Deposit | 379.24 | |
| New Account - RVP Fund | 6877.72 | |
| (Donated from Sun Country Iris Society) | | |
| TOTAL RECEIPTS | | 9567.65 |

DISBURSEMENTS

| | | |
|---------------------------|--------|---------|
| Iris for Spring Trek '90 | 470.90 | |
| Iris for Spring Trek '89 | 295.30 | |
| Iris for Spring Trek '88 | 159.24 | |
| Judges Training | 39.06 | |
| RVP Expenses - 1989 | 250.00 | |
| Newsletters-Balance '88 | 557.06 | |
| Service Charges - Banking | 38.22 | |
| Fall '88 Meeting Expenses | 150.00 | |
| CD - Interest to Checking | 381.29 | |
| TOTAL DISBURSEMENTS | | 2341.07 |

| | | |
|--------------------------------|-------|----------|
| BALANCE AS OF FEBRUARY 4, 1989 | | 13665.62 |
| | ----- | |

| | | |
|---------------------------|---------|----------|
| Checking Account | 1712.39 | |
| 1 Certificates of Deposit | 5075.51 | |
| RVP Fund | 6877.72 | |
| TOTAL | ----- | 13665.62 |
| | ----- | |

Submitted February 4, 1989

IRIS FLIRT

*Oh! Iris blossoms fair and bold,
I love your beauty to behold.
You nod to me and smile a bit;
Your graceful contours make a hit.*

*You fascinate as does the flirt
With blazing colors and fluted skirt.
Your slender stems and lacy crown
The morning zephyrs now bend down.*

*Your forms and colors hold my gaze;
You charm me in such countless ways.
With flaring falls and sweet perfume
You steal my heart and seal my doom.*

*I work from dawn to set of sun;
To fill your needs I've just begun.
Each day you take more of my time
So you may show your blooms sublime.*

*I care not for the time you steal;
My inner self I but reveal.
For work is only play to me
When I can share the day with thee.*

Katherine Tutin

AIS NEWSLETTER
Vicki L. Day
5244 W. Sunnyside
Glendale, AZ 85304

BULK RATE
U.S. POSTAGE
PAID
SUN CITY, AZ
PERMIT NO. 310

FLOYD W WICKENKAMP
10521 BELLAROSE DR.
SUN CITY AZ 85351