

Mc Millen's Iris Garden 2003

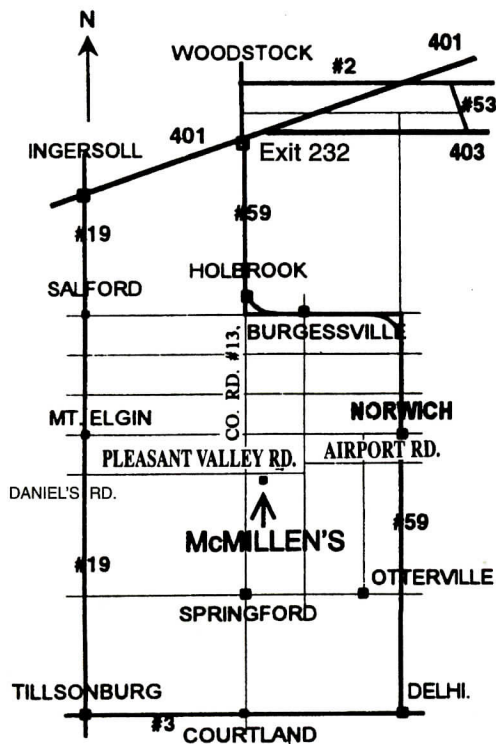


**30th
YEAR**

**"CANADA'S LARGEST IRIS GARDEN"
R.R. #1 Norwich, Ontario NOJ 1P0
(519) 468-6508**

Visit Our Website: www.execulink.com/~iris

McMillen's Iris Garden
 R.R. #1 NORWICH, ONTARIO
 NOJ 1P0 (519)468-6508



McMillen's Iris Garden

Look for the Ontario Sign on Hwy. 401 at Hwy 59 exit 232, South to Co. Rd. #13 South to Pleasant Valley Rd. Turn left (east) at our Sign, go 1/2 mile.

bloom season. Bloom season for the Iris starts the first part of May with the Miniature and continues until June 22nd with the Tall Bearded Iris. Peak bloom is around the first two weeks of June.

During Daylily bloom season we will be open Tuesday to Friday 10 - 5 and Saturday till noon through the month of July and August.

We encourage you to join the following Iris Societies, Canadian Iris Society (CIS) and The American Iris Society (AIS). Membership information is on page 19. Check out the websites for up to date events. For anyone joining the Society for the first time, please let us know and we will include an extra iris with your order.

We ask that everyone read the ordering instructions on page 28 prior to filling out the order form to ensure that you fully understand the terms and conditions. Irises are sent in August and Daylilies are sent in September. Please put these on separate order forms as two shipping fees do apply.

We wish you all the best for 2003 and looking forward to seeing you soon.

Visit our website at: www.execulink.com/~iris

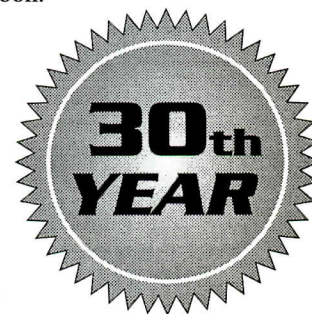
Our email is: iris@execulink.com

Fax is: 519-468-3214

Sincerely,

McMillen's Iris Garden
 Gloria & son Dan McMillen & family

Gloria Dan McMillen



Dear friends,

We are looking forward to another season of Iris. We want to thank our many customers for your support for a successful year. We are celebrating our 30th year and want to extend a special invitation to you and your friends to visit us in the garden and enjoy our favorite flower.

Again this year we are booked at several Garden Shows, Horticultural Societies and Seminars. It was great to start the year with the **Seedy Saturday** in London. Visit us in March at the **Stratford Garden Festival**, March 6th to 9th or **Canada Blooms**, at Toronto Convention Centre, March 12th to 16th where we have a new location this year in the Market Place, Booth #1315. You can visit us at the **Kitchener-Watrelloo Garden Show** at Bingemans March 28th to 30th. **The Ontario Garden Show** at the RBG in Burlington, is April 3rd to 6th where we are in Booth #331. **Outdoor Farm Show** is celebrating their 10th Anniverary, September 9th to 11th. Our booth is located in the Oxford County Tent, Second Lane.

We were in Wilmot and Port Burwell in February and are booked to speak at several Horticultural Societies, Kitchener-Waterloo in March and RBG in April. Mark your calendar to attend Iris Seminar at Lee Valley Tools in your area. Toronto East Scarborough is April 24th, Toronto West is May 1st and Burlington is May 8th. All start at 6:30 to 8:30 PM. Several Horticultural Societies have chartered a bus for their group to visit our gardens.

Buses are always welcome. Groups wanting to learn more about growing Iris & Daylilies and see our slide presentation can call 519-468-6508 for more information.

We are planning our 4th annual **BEEF BBQ** on June 7th. This is a Great day to visit the garden and stay for BBQ which starts at 5 PM to 7 PM. Tickets will be \$12.00 for Adults and \$6.00 for children under 12. Call now to order your tickets for your family and friends. Everyone has a good time.

We are excited to be one of the tour gardens for the **Siberian-Species Iris Convention 2003**, June 12th to 15th. Our garden will be on tour on Friday and Saturday mornings. There is a special guest Iris planting in front of the barn. For more information about the convention check out the website. <http://members.rogers.com/iris2003>

Our garden will be open 7 days a week from 9AM - 8 PM through the

TALL BEARDED IRIS

27" to 42" Tall showy blooms
starting end of May & June

ACOMA [22] (MAGER 1990) EM, 34", Wide graceful flowers. Sky blue standards complements the darker blue-violet plicata markings on ruffled ivory falls. AM \$7.50

ACROBAT [23] (WILLIAMSON 1980) EM, 35", Ruffled with standards of silver-lilac infused amber plum falls same with amber hafts & amber-plum borders. \$5.00

ACTRESS [24] (KEPPEL 1976) EM, 35", A top quality performer. A ruffled self, the color of spring wisteria, tucked & ruffled, tangerine beards. AM \$5.00

ADORA [27] (DUNN 1981) M, 38", White with very broad light violet plicata markings. \$4.50

ADVENTURESS [28] (HAMBLEN 1985) ML, 36", Pink standards, orchid purple falls. \$7.00

AEGEAN STAR [29] (PLOUGH 1972) EM, 30", Deep violet plicata pure white ground. Beards violet. HM \$5.00

AFTER HOURS [30] (MEEK 1981) M, 34", Ruffled, fragrant rich deep blue self. \$5.00

AFTER THE STORM [31] (INNERST 1992) M, 36", Ruffled dark blue self. \$10.75

AFTERNOON DELIGHT [32] (ERNST 1985) M, 36", Laced lavender standards highlighted by light golden tan. Lavender falls with golden tan border, gold shoulders with yellow beards. AM \$5.00

ALICE REMEMBERED [34] (INNERST 1981) M, 33", Heavily laced vivid old rose, orange beards. \$5.00

ALMADEN [37] (MARYOTT 1990) M, 36", A smooth dark red maroon like the red wine of Almaden Valley, CA. Sunfast & no haft markings. HM \$6.50

ALTRUIST [40] (SCHREINER 1987) EM, 37", Ruffled & fluted cool azure, lightening to chalk white around midrib & along beards. Graceful & fresh. AM \$6.00

AMBER SNOW [43] (BLYTH 1987) E, 36", Ruffled amoena, pure white standards amber apricot falls, bright tangerine beards. \$6.00

ANCASTER BLUE RUFFLE [50] (J. McMILLEN 1993) EM, 36", Ruffled frosted blue standards, darker middle fading to near white edges. Deep blue-violet falls, frosted light blue edge. Yellow beards. \$6.50

ANGEL CHIFFON [51] (RUDOLPH 1978) E, 31", A heavily ruffled light blue pink with a greenish white fall blaze & light pink beards. \$5.00

ANNA BELLE BABSON [54] (HAGER 1984) M, 36", Ruffled intense deep pink with tangerine beards. AM \$6.25

APHRODISIAC [58] (SCHREINER 1986) M, 36", Lightly ruffled petals lusciously shaded apricot & shrimp. Finely sculptured shining pearl luster. HM \$5.50

APOLLODORUS [59] (TOMPKINS 1989) ML, 36", Ruffled coppery tan-gold standards, splash of maroon overlays the centers of flared tan falls. 1/2" bright tawny gold border. Deep gold beards. \$7.50

APPRECIATION [63] (HAGER 1983) M, 38", Buff-tan standards with rounded orchid-lavender falls & yellow beards. Deeply fluted flowers on well branched stalks. \$5.00

ARCTIC FURY [67] (BENSON 1964) L, 38", Pure white self, falls large & lightly ruffled blooms. AM \$6.00

AROUND MIDNIGHT [68] (SCHREINER 1995) ML, 39", Dark purple, blacker falls. Very ruffled petals complement its liquescent enamel sheen. HM \$8.75

ART CENTER [70] (BROWN 1982) M, 38", Ruffled apricot-pink standards. Bright red orange beards on copper & rosy blended falls. HM \$6.50

AT DAWN [74] (R & L MILLER 1988) EM, 29", Lemon yellow standards, falls slightly deeper with deep aureolin yellow hafts & beards. \$5.00

AUTUMN CIRCUS [79] (HAGER 1990) 36", Wide violet on white ground plicata. Excellent. HM \$10.75

AVALON SUNSET [82] (SCHREINER 1994) ML, 36", Bright orange self with heavily ruffled falls. Bright tangerine beards add extra zest. HM \$8.75

AZTEC DANCE [84] (BLYTH 1980) M, 34", Cream standards & white falls with violet plicata border. Yellow beards. \$5.00

AZTEC TREASURE [85] (R & L MILLER 1984) ML, 34", Heavily ruffled dark chrome to buttercup yellow, honey toned hafts & fall margin. HM \$5.00

BABBLING BROOK [86] (KEPPEL 1966) M, 38", Excellent light blue self light yellow beards. DM, AM, HM \$4.75

BEACH GIRL [95] (BLYTH 1983) EL, 38", Ruffled Australian Iris, white standards & pink tinted midribs, falls a smooth orange apricot, tangerine beards. \$5.50

BEAUTIFUL VISION [96] (SCHREINER 1990) M, 38", Bright tangerine beards stand out on this rose-pink flower with laced edges. HM \$6.50

BECKON [97] (DALING 1974) M, 40", Rosy violet purple plicata on pure white. Yellow beards. \$5.00

BEFORE THE STORM [99] (INNERST 1989) M, 36", Darkest inky black self. Black beards tipped bronze slight fragrance. DM \$8.00

BEIGE RUFFLES [100] (RUDOLPH 1977) M, 33", Ruffled beige pink with a greenish white blaze infalls. \$5.00

BEST BET [104] (SCHREINER 1988) E, 36", Light wisteria blue standards contrast against deep hyacinth falls. Vigorous growth habits. Excellent. AM, HM \$6.00

BEST MAN [105] (McWHIRTER 1985) M, 38", Light marine blue bitone with darker falls. \$6.00

BEVERLY SILLS [106] (HAGER 1979) M, 36", Vivid coral tones lift the pulsing pink. Generously proportioned flower, edged crochet-lace & ruffles. DM \$6.00

BLACK DRAGON [113] (SCHREINER 1982) ML, 36", Intense black, medium sized flowers & extra velvety falls. HM \$6.00

BLACK FLAG [114] (STAHLY 1984) EM, 38", Ruffled near black with deeper falls, brown beards. AM \$5.00

BLACK ORPHEUS [115] (E. ROBERTS 1987) ML, 40", Nicely ruffled rich dark violet velvety flowers with dark beards tipped gold. \$7.00

BLACK SERGEANT [117] (GADD 1984) M, 37", Ruffled black self with brown beards. \$5.00

BLACKOUT [116] (LIUHN 1986) ML, 38", Well formed, semi flared & ruffled. Lustrous silky violet black. Dark navy blue beards give overall black effect. HM \$6.00

BLAZING SUNRISE [121] (BLACK 1985) EM, 35", Pink amoena. White standards lightly veined pink & vibrant, bright coppery pink falls, brilliant orange beards. HM \$5.00

BLUE CHIP PINK [124] (NISWONGER 1989) M, 34", Fragrant pink with hint of lilac. Tangerine pink beards tipped blue. AM \$6.00

BLUEBIRD WINE [127] (BLYTH 1982) VE, 32", Light blue standards with red violet midrib & falls, white beards tipped mustard. \$5.00

BLUES ON PARADE [128] (McWHIRTER 1987) EM, 38", Standards in shades of light blue over contrasting falls of rich marine blue set off by light blue beards. Three way branching on sturdy stems. HM \$6.75

BOHEMIAN [129] (SCHREINER 1988) EM, 37", A ruffled novel blend of tan, yellow and lavender. Well branched sturdy stalks. HM \$5.00

BOLD GOLD [131] (GATTY 1987) M, 35", Ruffled & flared bright dandelion gold, orange beards. HM \$6.00

BOOGIE MAN [137] (MEEK 1986) ML, 30", Rich dark violet standards, ruffled falls deep black-violet bitone. \$8.50

BOOGIE WOOGIE [133] (NICHOLS 1993) ML, 36", Fancy, ruffled flaring violet amoena. White standards, soft washing of violet on falls, deepens at shoulders. Fragrant. AM \$9.50

BRAGGADOCIO [136] (KEPPEL 1997) ML, 30", Short & loud. Salmon buff standards, darkly blended dahlia purple falls. burnt orange beards. Large, blocky & ruffled flowers. \$25.00

BRANCHING OUT [138] (BYERS 1987) EL, 38", Lightly ruffled pale silvery blue pink orange pink beards with long blue horns. Space age. \$7.50

BRANDY [139] (McWHIRTER 1981) ML, 34", A blend of toasted melon, tan, pink & rosy brown, with gold highlights. Ruffled & fluted, sturdy well branched. AM \$5.00

BRAZILIAN HOLIDAY [143] (SCHREINER 1997) ML, 36", Remarkable charming contrast, white standards with luxuriously rich plum red falls. Ruffled petals, slightly open revealing dancing mustard yellow style arms. Tangerine beards. AM \$25.00

BREAKERS [144] (SCHREINER 1986) ML, 37", A very ruffled, bubbly & effervescent medium to deep blue. A superb iris. AM \$5.00

BRIDE'S HALO [146] (MOHR 1973) EM, 36", Elegance & ruffling gives extra appeal. Mulberry with a rich royal velvety sheen & mulberry beards tipped blue. Perfect branching. DM \$5.50

BRIGHT REFLECTION [149] (O.BROWN 1979) ML, 34", Ruffled deep salmon self, red beards. \$5.00

BROKEN DREAMS [152] (KEPPEL 1998) M, 34", Ruffled & laced medium peach pink. Soft orange beards. Novelty with narrow random white segments on most flowers. HM \$15.75

BRONZE SCULPTURE [153] (GATTY 1984) M, 39", Lightly laced golden bronze blend. HM \$5.00

BUBBLING OVER [157] (GHIO 1982) M, 36", A quality, exciting blue-lilac self, intense bubble ruffling. AM, HM \$5.00

BUBBLING SEAS [159] (R & L MILLER 1985) M, 36", Pale flax blue standards with deeper violet falls, center flax. Ruffled with blue beards. HM \$6.50

BURGUNDY BUBBLES [164] (MARYOTT 1997) M, 36", Ruffled smooth burgundy red self beards. \$8.75

CALIENTE [179] (LIUHN 1968) ML, 36", Wine-red, beards of antique gold. Domed standards. AM \$5.00

CAN CAN RED [184] (GIBSON 1979) M, 38", Red-purple standards, white ground falls stitched red purple yellow beards. \$6.00

CARIBBEAN DREAM [196] (SCHREINER 1990) ML, 36", One of the bluest blue with large ruffled flowers. Excellent substance. HM \$6.00

CASCADE SPRING [199] (SCHREINER 1994) M, 39", Pale sapphire with bubbling ruffles. Dark azure tones on standards gently wash the falls & blend to white. Frosty tipped blue beards. Vigorous growth. HM \$10.50

CAYENNE PEPPER [203] (SCHREINER 1986) EM, 37", A spicy elegant hot red with tangy orange beards & style arms. A rugged robust grower with neatly tailored flowers on multi budded well branch stems. HM \$6.00

CELEBRATION SONG [205] (SCHREINER 1993) EL, 37", Remarkably vigorous pink bitone. Apricot-pink standards with ruffled blue-lavender falls. Red beards. AM \$10.50

CHAMPAGNE ELEGANCE [207] (NISWONGER 1987) EM, 34", Apricot amoena, near white standards & ruffled falls of blended buff, apricot & peach. AM \$6.75

CHAMPAGNE WALTZ [209] (SCHREINER 1994) M, 36", Arched yellow-apricot standards with ruffled creamy white falls, with precise 1/4" band of yellow apricot. \$16.75

CHANGE OF PACE [210] (SCHREINER 1991) M, 37", Beautifully arched standards of delicate pink tones. Ruffled & fluted white falls, deep rose-violet plicata. AM \$7.00

CHARGER [211] (STAHLY 1985) EM, 29", A wild ruffled deep red with falls slightly deeper. HM \$5.50

CHARISMA [212] (BLOCHER 1977) L, 34", Exceptionally well formed & broad petaled medium blue, harmonizing lemon yellow beards. Lovely rugged blue. \$5.50

CHARMED CIRCLE [213] (KEPPEL 1969) E, 34", Flaring falls & domed standards. Strongly marked blue-violet plicata on a white ground, blue beards. AM \$6.00

CHEESECAKE [216] (GAULTER 1984) M, 34", A luscious flesh pink, white area in center of the falls. Apricot hafts & coral beards. \$5.50

CHERUB'S SMILE [219] (SCHREINER 1982) M, 38", Happy flamingo pink beauty. Smooth pink self & flawless branched stem. HM \$5.00

CHIEF HEMATITE [224] (GIBSON 1983) M, 36", Ruffled red brown & violet standards, semi-flaring falls are velvety oxblood red with orange speckled hafts. Orange brown beards. \$8.00

CHIEF QUINABY [225] (SCHREINER 1991) EM, 36", Velvety deep red petals. Large flowers with domed standards & ruffled flaring falls. HM \$6.25

CHIEF WAUKESHA [227] (BLODGETT 1978) ML, 36", Oxblood red self, reddish beards. Well branched & vigorous. HM \$5.00

CHINESE TREASURE [230] (BLYTH 1983) EM, 32", An excellent pink amoena. Clear white standards, offset by rose-pink falls. Vivid mandarin red beards. \$6.75

CHOCOLATE WONDER [232] (CRISTENSEN 1976) EM, 36", Standards medium brown & falls metallic mustard. Tangerine beards. \$5.00

CHRISTA [233] (NELSON 1985) M, 36", Medium pink standards, falls have creamy pink hafts blending to pink edges. Red orange beards. \$5.50

CINNAMON GIRL [241] (SCHREINER 1987) E, 35", Fine formed handsome rosy cinnamon plicata. Good substanced. \$5.50

CITY LIGHTS [245] (DUNN 1991) M, 37", Vigorous rich blue-violet flowers with an electrifying effect of the white zonal patterns surrounding the pale lemon yellow beards. AM \$8.25

CLARENCE [249] (ZURBRIGG 1991) EM, 35", Light blue reblooming amoena. White beards with prominent white spots in center of falls. AM \$7.00

CLARENDON [250] (GAULTER 1976) M, 38", Rosy pink blend with good garden carrying power. HM \$5.00

CLASSIC EDITION [251] (O.BROWN 1986) VL, 35", Ruffled brick dusty pink with brick red beards. \$10.50

CLASSIC PROFILE [252] (MOHR 1982) M, 40", Nice ruffled pale blue self. \$5.50

CLASSICO [253] (GARTMAN 1984) M, 36", Cream rimmed chartreuse gold, gold beards. HM \$5.50

CLEAR DAY [255] (GATTY 1989) EM, 34", Ruffled light medium blue, yellow beards tipped blue white. \$6.00

CLEAR MORNING SKY [256] (ERNST 1991) EM, 40", Gorgeous light blue standards darken in the hafts. Paler falls & blue beards. Crisp, wax-like flowers on tall well-branched stems. HM \$10.75

CLOUD RIVAL [262] (POWELL 1988) ML, 37", Fluted full violet blue with blue beards. Pronounced sweet fragrance. \$7.00

CODICIL [265] (INNERST 1985) EM, 33", Medium blue self with near black beards. AM \$5.50

COLLAGE [267] (B.BROWN 1986) M, 38", Unusual lightly ruffled lavender with greenish tan midribs & hafts. \$5.00

COLOR CODED [269] (RAWLINS 1982) ML, 30", Standards are a clear light blue, falls develop a deep intense near black violet creating a dramatic contrast. \$5.50

COLOR SPLASH [272] (SCHREINER 1980) M, 37", Lightly laced bicolor. Rich orchid-pink standards & rose falls. Tangerine red beards. HM \$6.00

COLORBRATION [273] (CRANDALL 1981) M, 38", Ruffled bicolor of deep yellow standards & deep violet falls. \$6.50

COLORTART [275] (INNERST 1983) M, 38", Brightly shaded burgundy plicata. Pale yellow falls heavily sanded, striped & dotted red burgundy. Golden bronze beards. Well branched & budded. HM \$5.50

COLOURS [274] (DUNN 1983) ML, 38", Standards red violet, falls same bordered white. \$6.75

COLUMBIA BLUE [276] (SCHREINER 1978) EL, 38", Well substantced blue with whitish beards. Lots of buds make a long bloom season. HM \$6.00

CONJURATION [284] (BYERS 1989) ML, 40", White standards delicately tinted pale blue violet. Deeper band of amethyst violet on falls. Tangerine beards, fuzzy white horns. DM \$8.00

CORAL BEAUTY [294] (NISWONGER 1981) EM, 34", White standards, peach apricot falls edged white & topped, tangerine beards. \$5.00

CORAL CHALICE [295] (NISWONGER 1983) M, 34", White with a deep coral blush on falls. \$6.00

CORAL SUNSET [296] (SCHREINER 1990) ML, 37", Luscious pink-apricot tones lightening to creamy white with bright tangerine beards. \$6.25

COSMIC DANCE [297] (SCHREINER 1982) M, 35", Deep rich blue self with shades of intense indigo. Elusive ruffling & charming, lighter blue edging. HM \$5.50

COTE D'OR [298] (SCHREINER 1990) L, 36", Huge rich ruffled yellow golden tones with orange beards. AM \$14.75

COTTON CARNIVAL [299] (MOHR 1981) M, 38", Ruffled & fluted pure white self, well branched, sturdy stalks. HM \$5.50

COUNTRY MANOR [303] (KEGERISE 1973) M, 38", Ruffled creamy white with light yellow hafts & yellow beards. Flaring falls & well branched. AM \$5.50

COVER STORY [306] (BELLAGAMBA 1985) M, 33", Ruffled satiny creamy white. Pale yellow at shoulders & edges of falls. \$6.75

CROATOAN [317] (POWELL 1985) ML, 36", Red self with orange beards. \$5.50

CRUZIN [322] (DUNN 1987) M, 37", Rounded & ruffled royal purple with a splash of white at tip of blue violet beards. Well branched. \$6.00

CRYSTAL PRISM [326] (SILVERBERG 1986) ML, 36", A large lovely ruffled white with good substance & nicely laced edges. Bright red beards. \$6.75

CUSTOM MADE [328] (O. BROWN 1981) 35", Hot flamingo pink with shrimp red beards. Standards closed, falls flared. Daintily laced edged petals. HM \$6.00

DAREDEVIL [334] (KEPPEL 1988) M, 36", Columbine blue & white plicata, rusty tangerine orange beards. HM \$6.00

DARKSIDE [338] (SCHREINER 1985) ML, 34", Ruffled vivid deep purple black. Purple ebony beards. Well branched. AM \$7.00

DAWN OF CHANGE [348] (ERNST 1993) M, 38", Light lavender blue standards with white edges, style arms with yellow highlights. White falls with golden yellow shoulders, orange beards tipped yellow. Ruffled & sweet fragrance. AM \$10.75

DAYLIGHT SPLENDOR [350] (CARR 1984) ML, 38", Golden yellow standards, falls same, red orange plicata markings. \$5.00

DAZZLING GOLD [352] (ANDERSON 1981) EM, 30", Very bright & deep toned yellow standards. Falls yellow with startling red veining that is always prominent. Well branched. Different yet beautiful. AM \$6.00

DEEP FIRE [355] (SCHREINER 1979) M, 37", Wide petaled elegant rich velvety red self with harmonizing beards. Good substance & texture. AM \$5.25

DEEP PACIFIC [356] (BURGER 1975) ML, 33", Wide deep navy blue with medium blue beards. AM \$5.50

DEEP VENTURE [357] (SHOOP 1982) M, 36", Deep blue with tangerine beards. \$5.50

DEITY [359] (BYERS 1988) ML, 36", Flared & lightly ruffled blue white, strongly protruding devilish blue horns. Space age. \$5.50

DELTA BLUES [361] (SCHREINER 1994) M, 36", Wide lavish ruffled, heavenly medium blue self. White beards. AM \$12.75

DESERT MIST [363] (WILLIAMSON 1982) EM, 34", Dainty plicata of soft golden tan & sandalwood. Lemon yellow beards, on white ground, standards tannish rosewood. \$5.00

DESIGNING WOMAN [364] (GATTY 1990) EM, 36", Lavishly laced deep violet standards with heavily ruffled smooth pearly lavender falls, darker violet edges. Bright tangerine beards. AM, HM \$6.50

DEVIL'S LAKE [366] (SCHREINER 1999) ML, 39", Ruffled dark navy blue colorbration, including beards. \$25.00

DISTANT CHIMES [372] (SCHREINER 1977) E, 38", Standards light yellow & orchid lavender falls. \$5.50

DISTANT FIRE [373] (SCHREINER 1983) EM, 35", Garden sentinel, upright, graceful & well branched. A beautiful well budded shining red. \$5.50

DIVINE [374] (DUNN 1988) M, 38", Ruffled bluish orchid standards with deeper blue violet falls. Large white area at tip of icy beards. HM \$6.75

DIVINE LIGHT [375] (ERNST 1992) 36", Beautiful ruffled creamy yellow with darker edges & hafts. Orange-yellow beards. \$10.75

DREAM A LITTLE [382] (OSBORN 1985) M, 36", Combination of pink ruffles & lace. Small 1" rosy orchid horns protrude from bright tangerine beards. Space age. \$6.00

DRESDEN GREEN [386] (SELLMAN 1977) M, 36", Ruffled lemon-blended white, light greenish shoulders. \$5.00

DUTCH TREAT [395] (STEINHAUER 1976) ML, 34", Warm white standards, creamy-yellow falls, green cast. \$6.50

EAGLE'S FLIGHT [397] (SCHREINER 1986) EM, 35", Brilliant rosy toned plicata. 1/2" rich rose grape margin is accented by white centers on falls. Standards a lighter shade of rose lavender. AM \$5.50

ECHO DE FRANCE [403] (ANFOSSO 1984) EM, 33", White standards over yellow falls. Dark gold beards. \$5.50

ECSTATIC ECHO [404] (DAHLING 1983) EM, 32", Standards light orchid fading to white. Coppery red falls are edged with pale orchid. Yellow beards. \$6.00

EDITH WOLFORD [405] (HAGER 1986) M, 35", Stunning bicolor. Ruffled light canary yellow standards & medium blue violet falls. DM \$8.00

EFFERVESCENT [407] (MOHR 1980) EM, 35", Tall & vigorous very lacy light blue. \$6.00

EGYPTIAN [408] (BYERS 1988) M, 34", Gold tan standards with heavy violet plicata markings on white falls. Orange beards & amethyst horns. \$8.75

ELECTRABRITE [410] (O.BROWN 1983) ML, 36", Ruffled medium to bold pink. Standards domed, falls arched, white area in center, rich coral red beards. HM \$6.00

ELEGANT ANSWER [413] (HAGER 1987) ML, 37", Fluted intense smooth deep peach strawberry beards. \$10.75

ELEGANT ERA [414] (TOMKINS 1986) 39", Ruffled & fluted amber standards lined antique gold. Ivory falls bordered antique gold. \$6.00

ENCHANTED WORLD [422] (SCHREINER 1979) M, 36", Luscious bright rose-pink, deep rose-shrimp beards. Slightly flaring falls. Well branched, multi budded. HM \$5.00

ENCHANTING [423] (M.HAMBLEN 1987) 36", Buff pink standards flushed violet, rose violet falls, reddish purple beards. HM \$10.00

ENSEMBLE [425] (McWHIRTER 1986) M, 36", Heavily ruffled light magenta, falls shaded darker, beards cream. \$6.75

EVER AFTER [434] (KEPPEL 1986) ML, 38", Sturdy & well branched, deep fuchsia rose with domed standards & slightly flaring falls. Terra cotta beards. HM \$6.75

EVERYTHING PLUS [435] (NISWONGER 1984) DM, 30", Standards light shade of blue-white. Nice contrasting white falls overlaid deep violet plicata markings. DM \$5.75

EXUBERANT [438] (MOHR 1981) EM, 32", Standards orange, falls white with precise 1/4" orange border. Petals ruffled & falls flared. AM \$6.50

FANCY BRASS [440] (SCHREINER 1987) ML, 40", Ruffled honey yellow brown with darker brown haft markings & gold beards. HM \$7.75

FANCY DRESS [441] (KEPPEL 1998) HM, 34", Ruffled bitone. Medium blue violet standards with deeper velvety falls, both with paler veining & margins. Pure white surrounds white beards touched orange. HM \$18.75

FANTASY FAIRE [444] (NELSON 1978) HM, 35", Smoky pink orchid, rosy tan blendings. Burnt red beards. HM \$5.50

FASHIONABLE PINK [447] (SCHREINER 1976) M, 35", A deeper pink of quality tone. Pure pink with no salmon shades. Ruffled & fluted. HM \$8.00

FASHIONABLY LATE [448] (KEPPEL 1998) L, 36", Nicely ruffled. Rose violet blend is undertoned fuchsia, brownish red beards. \$18.75

FEMININE FIRE [452] (ERNST 1991) 35", Ruffled deep pink with red beards \$8.75

FEMINIST [453] (GARTMAN 1981) EM, 33", An orange bearded clear rose pink self. Extra heavy substance. HM \$6.00

FEMME FATALE [454] (GATTY 1988) ML, 35", Pale pink standards & slightly creamier falls, flame orange beards. Exquisitely laced & ruffled. HM \$6.75

FIERY CHARIOT [457] (SCHREINER 1984) M, 36", Vibrant orange with bright tangerine beards. \$7.00

FIESTA TIME [458] (SCHREINER 1986) M, 35", dashing variegata. Falls velvety mahogany red. Standards exquisite in contrasting golden amber tones. Brilliant gold beards. \$6.00

FIRE CREEK [460] (LUIHN 1981) ML, 32", A wide lightly fluted deep aster violet, blue-tipped red beards. HM \$5.50

FIRE PIT [461] (ERNST 1993) M, 34", Ruffled warm brick amber standards with red overlay. Deep crimson red falls with violet tone near yellow beards. \$14.75

FIRE TRAILS [462] (SILVERBERG 1986) ML, 36", Red bitone with bright russet standards & garnet red black flushed falls, highlighted by wide orange beards. \$6.50

FIREBREATHER [463] (SCHREINER 1992) L, 37", Vibrant orange with bright tangerine beards. HM \$18.75

FIRST BLUSH [465] (CORLEW 1981) EM, 33", Vigorous light pink with pinkish red beards. HM \$5.50

FIRST REUNION [466] (GAULTER 1990) EM, 34", Ruffled & heavily laced rosy pink. Falls are lighter than standards, giving a rosy bitone effect. Tangerine beards. \$12.75

FISSION [467] (BLACK 1989) E, 32", Very ruffled bright yellow gold. Orange beards. \$8.75

FLAMING VICTORY [470] (WEILER 1983) EM, 36", Ruffled medium yellow with orange beards. AM \$6.00

FLASHPOINT [472] (KEPPEL 1986) M, 32, Vibrantly intense color varying from greenish golden orange to orange with a reddish sheen. Dark red beards. HM \$12.00

FLORINTINA [477] (0) M, 34", Species iris from the wild. White to light violet. Original ORRIS root used for perfume in pot-pourri. \$5.00

FLOWER SHOW [478] (GATTY 1983) EM, 36", Very ruffled & waved, warm hyacinth orchid. Falls age to orchid suffused cream in the center. Prominent deep yellow beards. HM \$6.00

FOOLISH FANCY [481] (HAGER 1985) HM, 38", Laced strawberry sherbet, falls touched raspberry rose. Plicata hafts, tangerine beards HM \$7.75

FOOTLOOSE [482] (SCHREINER 1993) HM, 36", Ruffled white ground plicata with rich rose-violet markings. Showy. HM \$8.00

FORT APACHE [485] (SCHREINER 1982) M, 39", A vibrant red beauty with 5 branches plus spur. Budding is double socketed giving 12 buds per stem. HM \$6.00

FRAGRANT LILAC [486] (HAGER 1986) ML, 37", A fragrant & classically formed rich deep lilac-lavender. HM \$7.75

FRINGE OF GOLD [490] (SCHREINER 1987) HM, 38", Deep rich golden tones radiate from the beard & hafts to creamy white rim on falls. Deep canary yellow standards. HM \$8.00

FRINGED LACE [491] (RUDOLPH 1980) VE, 30", Fringed & laced petals with a subtle coloration of alabaster cream highlighted by a band of lemon yellow. HM \$5.50

FRISCO FOLLIES [492] (O.BROWN 1983) M, 38", Lacy white edges surround pink standards. White falls, pink shoulders & coral beards. \$6.50

FROSTED SAPPHIRE [494] (NISWONGER 1988) M, 32", Lightly ruffled pinkish lilac white with pale blue beards turning orange in throat. \$8.00

FROSTING [495] (GATTY-KEPPEL 1993) ML, 36", Delicate ruffles & lace, combination of pink, lilac & white tones accented by bright tangerine beards. AM \$8.75

GALLANT MOMENT [506] (SCHREINER 1980) HM, 40", A vigorous smooth glossy red. Tall very well branched plant with 4-5 branches & up to 10 buds. Fragrant. HM \$5.00

GANGES MOON [508] (SILVERBERG 1988) ML, 38", Ruffled Citron yellow standards & antique cream undertone, brighten ruffled & fluted falls. Lemon beards. \$6.00

GARDEN BRIDE [509] (CHAPMAN 1998) ML, 37", Ruffled clean white self. \$10.75

GENEROSITY [515] (KEPPEL 1979) EM, 36", Very wide & ruffled cream, a deeper cream wash & lemon shoulders, trace of lace. Good branching & bud count. HM \$5.00

GENTLE DRAGON [517] (L. MILLER 1988) M, 32", Butterscotch standards, heavily veined maroon. Ruffled red black falls, butterscotch rim golden orange beards. Fragrant. \$9.75

GINGER SWIRL [521] (SCHREINER 1985) 34", Unique, tannish brown standards with orchid-lavender in center of falls with tan band. AM \$6.75

GLAD RAGS [523] (HAGER 1985) M, 34", True yellow standards, berry maroon falls, good substance, ruffled. HM \$6.25

GLASS SLIPPERS [525] (O.BROWN 1983) M, 42", Standards pale salmon, near white falls, pinkish hafts & beards. \$6.00

GLISTENING ICICLE [526] (MARYOTT 1982) M, 36", Frosty cool blue amoena. Blue white standards floating over deep rich blue falls. Bluish white beards. HM \$6.00

GNU BLUES [530] (KASPEREK 1994) M, 36", Lightly ruffled medium blue-violet. Random splashes of dark blue & white on falls. Fragrant. AM \$12.50

GOING MY WAY [533] (GIBSON 1972) ML, 37", Deep pansy violet banded plicata on white ground. Bluish beards. AM \$6.00

GOLD GALORE [536] (SCHREINER 1978) M, 35", Radiating, deep rich golden yellow self, beards & all. AM \$5.50

GOLD RING [537] (GAULTER 1978) M, 38", White falls ringed golden yellow, matching standards. Flaring falls, orange beards. Ruffled & multi-budded. HM \$6.00

GOLDEN APPLE [538] (PLOUGH 1975) HM, 30", Ruffled & closed lemon-yellow standards. Ruffled & semi flaring lemon falls with Indian yellow beards. HM \$6.00

GOLDEN DYNASTY [540] (B.BROWN 1984) E, 36, Well branched & fluted bright medium yellow that holds its color well in all weather. EC \$6.75

GOLDEN STATE REUNION [543] (McWHIRTER 1987) M, 38", Large ruffled flowers in a new shade of deep golden yellow. Three way branching on sturdy stems. An exciting non fading yellow. \$18.00

GOOD SHOW [545] (HAGER 1988) M, 35", Ruffled bright orange, center infused pink, tangerine beards. AM \$6.75

GOOD VIBRATION [547] (SCHREINER 1997) ML, 37", Unique color combination. Ruffled apricot orange contrasts the white centers on flaring falls with 1/2" of tangerine marginal band. Tangerine beards & slight fragrance. HM \$16.75

GOODBYE GIRL [549] (SCHREINER 1995) M, 36", Ruffled flamingo pink coloration with tangerine beards. HM \$14.75

GOODBYE HEART [550] (SCHREINER 1989) ML, 36", Fresh apricot pink standards, light rose apricot falls, deep tangerine beards. Well branched & budded. HM \$8.00

GOODNIGHT MOON [551] (SCHREINER 1995) M, 39", Ruffled clear lemon yellow self with golden yellow beards. \$14.75

GREAT LADY [555] (SIMON 1982) ML, 36", Ruffled & laced flesh pink self. Peach pink beards. \$6.00

GREENEYED LADY [558] (PLOUGH 1973) ML, 36", Primrose yellow, an overall green cast. Vigorous. HM \$5.00

GYPSY ROMANCE [562] (SCHREINER 1994) ML, 37", Ruffled rich violet-mulberry with blue-purple beards. Large well formed flowers. AM \$7.75

GYPSY WOMAN [563] (SCHREINER 1985) EM, 35", Unique beauty. Light rose-orchid band edges, creamy white falls. Soft lemon yellow beards & standards. AM \$8.00

GYRO [565] (AITKEN 1989) M, 36", Very heavily ruffled dark purple self. HM \$6.75

HARVEST KING [569] (SCHREINER 1990) ML, 38", Lacy rounded standards are smooth light brown & the ruffled flaring falls are tinted golden tan. HM \$12.00

HARVEST OF MEMORIES [570] (ZURBRIGG 1985) M, 38", Dresden yellow self. Yellow beards. Reblooms. \$10.75

HAUNTING MYSTERY [571] (POWELL 1983) ML, 36", Fragrant red purple bitone with falls rimmed nearwhite. \$5.50

HEAVENLY RAPTURE [575] (SCHREINER 1989) M, 39", Ruffled, flared & laced white self. Orange beards. HM \$7.50

HELEN BEOHM [576] (SCHREINER 1977) ML, 36", A cool rich & graceful translucent citrine cream self. Ruffled flowers have a glossy wax like substance. HM \$5.50

HELLO DARKNESS [577] (SCHREINER 1992) EM, 37", Large ruffled purple-black tones surpasses all other Iris in size & color, rich velvety texture & strong stems. DM, HM, WM \$15.00

HELL'S FIRE [578] (S. ROBERTS 1976) VE, 35", Deep red-black self, falls deeper shaded because of its lustrous velvety sheen. Ideal red for hot dry seasons. HM \$6.00

HERITAGE LACE [579] (SCHREINER 1986) ML, 36", A ruffled laced & fluted heavily substantced cream. Rich creamy yellow standards, falls white rimmed cream. HM \$6.00

HIGHLAND HAZE [582] (KEPPEL 1986) EM, 34", Pale pink standards suffused orchid mauve. Warm white falls with 1/2" to 3/4" band of mauve with darker rosier hafts. Ruffled & lightly laced. \$6.75

HITCHING POST [584] (INNERST 1985) EM, 36", Bronze gold standards with white ground plicata falls edged red. Bronze beards. \$6.00

HONKY TONK BLUES [588] (SCHREINER 1988) ML, 37", Distinctive ruffling with blending shades of blue & white. Blue violet is streaked with swirling white etching. Well branched strong stems. HM \$6.00

HORN LORI [590] (HAGER 1978) M, 36", Fluted & closed standards are orchid with a touch of buff. Falls are rose orchid, flared, ruffled & laced. Yellow beards, short orchid horns. \$5.50

HOT TO TROT [594] (McWHIRTER 1991) EM, 33", Variegata plicata combination. Deep sulphur yellow standards & falls, reddish mahogany plicata markings. White around golden beards. HM \$8.75

ICE SCULPTURE [601] (HAGER 1970) M, 35", Wide, full clear ice blue changing to frosted white. AM \$5.50

IMMORTALITY [604] (ZURBRIGG 1982) M, 30", Ruffled white. Slight sweet fragrance. Reliable rebloomer. AM \$5.50

IMPERIAL THEME [605] (K.MOHR 1988) M, 33", Ruffled concord grape violet self with bluish beards. \$10.75

IMPERSONATOR [606] (BABSON 1975) M, 38", Six huge horizontally flaring falls. Wide & overlapping. Mid blue violet paling white center. Spectacular. HM \$5.50

INAUGURAL BALL [608] (GHIO 1989) EL, 40", Bright yellow standards, deep garnet falls. HM \$8.00

INDIGO PRINCESS [611] (SCHREINER 1992) ML, 39", A magnificent ruffled deep violet self. AM \$9.50

INTERNATIONAL INTRIGUE [616] (BLACK 1989) M, 36", Bright yellow standards, garnet falls. Excellent. \$8.00

INTERPOL [618] (PLOUGH 1973) ML, 37", Purple-black self, purple beards tipped mustard. HM \$6.00

JAM SESSION [622] (CRANDALL 1981) M, 38", Yellow with red markings on falls. \$5.00

JAZZ FESTIVAL [623] (SCHREINER 1990) ML, 40", Standards are creamy buff shades with flared rosy falls. Gently ruffled form. \$12.75

JAZZABEL [624] (ENSMINGER 1988) M, 34", Ruffled white standards with white falls banded dark lavender. Blue beards. \$7.50

JAZZED UP [627] (SCHREINER 1994) ML, 42", Ruffled rose amoena. White standards with wide rosy lavender falls. HM \$9.50

JESSE'S SONG [629] (WILLIAMSON 1983) EM, 35", A white ground plicata with wide, sanded methyl-violet edges. Generously ruffled form, good grower. Choice. DM \$6.00

KAREN [642] (M.HAMBLEN 1984) ML, 36", Soft pink & violet blue bicolor with tan hafts, rusty orange beards. AM \$8.00

KAREN CHRISTINE [643] (ENSMINGER 1985) ML, 35", White infused with magenta with bright red beards. \$8.00

KATY BUG [644] (B.BROWN 1984) ML, 30", Very pretty iris, tan rose standards, rosy violet falls. \$6.00

KEKIONGA [646] (R & L MILLER 1987) M, 36", Ruffled dark royale purple, brown overlay on hafts. HM \$7.75

KENTUCKY WOMAN [648] (SCHREINER 1997) ML, 36", Rich pink, delicate ruffles & laced edges. Pink blush fades to white in centers of falls. Bright tangerine rose beards. HM \$15.75

KINGSLAND ROYALE [651] (R & L MILLER 1984) M, 40", Royal purple with campanula blaze on falls. \$6.75

KISS OF GOLD [654] (PLOUGH 1983) 32", Ruffled creamy yellow standards & yellow falls with heavy sanding of gold plic marks. \$6.75

KISSING CIRCLE [655] (STEVENS 1989) M, 30", Ruffled white ground dark blue plicata. \$6.75

LA FORTUNE [660] (DUNN 1989) 35", Ruffled red brown standards. Washed magenta in center of falls, edged red brown bright orange beards. \$10.50

LACE ARTISTRY [661] (AITKEN 1988) M, 36", Laced & ruffled warm peach-pink. Pink falls are cream around the tangerine beards. HM \$6.75

LACE JABOT [662] (GAULTER 1982) ML, 32", Lovely early blooming lacy lavender. Bright yellow beards light up the whole center of the flower. Branching & bud count are very good. HM \$6.75

LACED COTTON [664] (SCHREINER 1980) ML, 36", Very heavily laced immaculately clean pure white. Beards & haft centers are all pure clean white. Very ruffled. AM \$8.00

LACED DAISY [665] (BLACK 1987) ML, 32", Heavily laced flowers of white & yellow. Standards of buff gold, falls cream with tan gold band & hafts. \$6.75

LADY FRIEND [668] (GHIO 1981) E, 36", Garnet rose shade in a class by itself. Tangerine bearded iris, excellent growth habit & bloom. AM \$7.00

LATE REPORT [672] (VARNER 1979) ML, 36", Laced & ruffled lemon yellow. Beards deeper yellow. \$5.00

LATIN HIDEAWAY [673] (NICHOLS 1986) ML, 33", Bicolor blend of lavender buff standards & wine red falls with tan violet edges. AM \$5.50

LATIN ROCK [674] (SCHREINER 1984) M, 39", Bicolor with warm peach pink standards & glistening red plum falls, with glowing tangerine beards. Good bud count. AM \$6.00

LAUREL PARK [675] (GAULTER 1978) 38", Lightly ruffled blend of pink, peach and orange with tangerine beards. \$8.00

LAVENDER SUNSET [677] (DURRANCE 1987) VL, 38", Pale purple lavender with white blaze on falls. White beards. Very late blooming. \$8.00

LIGHTED WITHIN [684] (BLODGETT 1980) ML, 35", Deeper cream standards with buttercup yellow falls. Beards are a bright deep tangerine. HM \$6.50

LILAC WINE [687] (BLYTH 1977) EM, 38", Silvery lilac standards, velvety red-plum falls. Gold beards. \$6.00

LINGERING LOVE [689] (MEEK 1986) EM, 34", Heavily ruffled & laced rosy pink plicata. Orange beards. \$5.00

LONDON LORD [700] (SCHREINER 1983) ML, 38", Pale blue & velvety blue purple bicolor, bright reddish beards. \$6.50

LOOP THE LOOP [702] (SCHREINER 1975) ML, 44", Medium blue violet plicata, on glacial white ground. AM \$6.00

LORD JEFF [703] (K.WAITE 1981) ML, 36", Majestic ruffled dark violet, matching beards tipped yellow. AM \$5.00

LORILEE [704] (SCHREINER 1981) ML, 37", Ruffled rose orchid, extra broad petals. Well branched & multi budded, heavy substance. AM \$5.00

LOUDOUN CHARMER [705] (CROSSMAN 1973) M, 39", Beige standards, lavender falls. Buff pink hafts. HM \$5.00

LOUDOUN GOLD [706] (CROSSMAN 1984) EM, 36", Yellow gold with orange beards. \$6.00

LOUDOUN ROYAL [707] (CROSSMAN 1984) ML, 33", Precisely ruffled domed standards & flared falls of medium purple. Purple beards tipped blue. \$6.00

LOVE BOAT [712] (BLYTH 1981) ML, 38", Ruffled light pink self with deeper pink beards. \$5.00

LOVELY GLOW [716] (GATTY 1987) M, 35", Blocky pastel apricot with pink glow in standards. Small pale spot at end of orange beards. Lightly laced. \$10.00

LUAU [718] (GHIO 1976) ML, 38", Smooth rose magenta self tangerine beards. \$8.00

- LULLABY OF SPRING [720] (SCHREINER 1987) EM, 38", Subtle pastel tones of pure lemon yellow standards & soft lavender falls. AM \$6.75
- LUXURY LACE [721] (GREENWOOD 1983) M, 30", Very laced with coral pink standards & creamy pink falls. \$12.75
- LYNN WITH LOVE [722] (BOUSHAY 1973) M, 40", Lacy orchid lavender, paler fall, red beards. \$5.50
- MAGHAREE [725] (BLYTH 1986) ML, 38", Lavendar white standards repeated as irregular 3/8" edge on rose pink falls. Tangerine beards. \$12.00
- MAGIC MAN [726] (BLYTH 1979) ML, 38", Pastel blue standards over velvety purple falls with narrow band of blue, set off by vibrant red beards. \$8.00
- MANY HUES [729] (DALING 1981) M, 36", Bright saffron yellow standards, falls rosy purple flushed white, edged yellow. \$7.00
- MARAUDER [731] (GHIO 1984) EM, 36", A ruffled dark maroon red, bright golden beards. HM \$7.00
- MARIA TORMENA [732] (ENSMINGER 1986) ML, 35", Phlox pink with pansy violet splashes, poppy red beards. AM \$12.75
- MARINER'S COVE [733] (LUIHN 1983) ML, 40", Ruffled & blocky medium wisteria blue. Beards are pale blue tipped lemon. HM \$5.50
- MAROON VELVET [737] (B.BROWN 1986) M, 36", Velvety dark red, gold beards. \$6.75
- MARY D [738] (M.HAMBLEN 1988) VL, 34", Smoky lavender pink standards with lavender blue falls. Bushy beards lavender to cream. \$8.00
- MARY ELLEN NICHOLS [739] (NICHOLS 1990) ML, 36", Classic pale golden standards edged white. Ruffled & flaring plush maroon wine falls, edged rosy lavender band. HM \$10.75
- MARY FRANCES [740] (GAULTER 1973) M, 38", Light blue orchid, lighter area in center of falls. Fragrant. DM \$5.50
- MAUVELOUS [747] (BYERS 1988) M, 36", Very smooth dreamy pinkish mauve. Short blue horns extending from bright orange beards. Heavily ruffled large flowers. \$6.75
- MESMERIZER [753] (BYERS 1991) M, 37", Large flaring pure white. Newest rage in novelty Iris. Frilled flounces protruding from the tips of the beards. DM \$10.00
- MIDNIGHT DANCER [756] (BLACK 1991) EM, 36", Ruffling & flaring deep indigo-black. Well branched, large flowers with excellent substance. HM \$10.75
- MIDNIGHT EXPRESS [757] (SCHREINER 1988) ML, 35", Ruffled purple black with deeper blue black beards. \$8.50
- MIDNIGHT FIRE [758] (NISWONGER 1983) HM, 34", Deep violet blue, big bushy red beards. HM \$5.50
- MIDNIGHT LOVE AFFAIR [759] (McWHIRTER 1979) ML, 34", Fragrant & ruffled intense purplish blue. Light violet beards. HM \$6.00
- MIDNIGHT OIL [761] (KEPPEL 1998) M, 36", Large ruffled sooty black, velvety falls. Blackish grape beards. AM \$25.00
- MIDNIGHT WAVE [762] (SILVERBURG 1988) ML, 38", Wide ruffled standards of icy white, pale lavender & Royal violet falls. White, lilac tinted beards. \$6.00
- MIND READER [766] (KEPPEL 1994) VE, 36", Ruffled pale lavender standards are lightly shaded with rosy lavender tones. Flaring falls are washed deeper lavender-violet with white sunburst pattern at their centers. Yellow to white beards. AM \$14.75
- MIRROR IMAGE [772] (HAGER 1979) L, 36", Dark violet plicata borders on pure white ground. HM \$6.00
- MIRROR MIRROR [773] (GIBSON 1979) E, 27", Yellow ground plicata, burgundy trim & mirror strip falls. HM \$5.50
- MOTHER EARTH [779] (HAGER 1987) ML, 36", Buff standards & lilac lavender falls. HM \$7.50
- MULBERRY PUNCH [781] (SCHREINER 1990) ML, 38", Tall, rich intense cerise-purple tones. Broad ruffled petals. HM \$10.75
- MULLED WINE [782] (KEPPEL 1982) M, 35", Ruffled & laced raspberry burgundy, apricot undertoning on upper falls. Terra-cottabeards. HM \$6.75
- NAVAJO JEWEL [787] (WEILER 1984) EM, 37", Ruffled medium blue, turquoise influence. Bright yellow beards AM \$6.75
- NEEDLEPOINT [788] (SCHREINER 1983) VE, 33", Delicately stitched white ground plicata. Ruffled falls sharply marked, 1/2" rosy plicata stitching. HM \$5.50
- NEW CENTURION [789] (SCHREINER 1993) EM, 39", Tall large red Iris. Smoothly non-fading deep carmine. HM \$10.75
- NIGHT AFFAIR [792] (LUIHN 1983) ML, 36", Deeply fluted & ruffled glistening dark royal violet, to black. Beards deep blue, yellow in the throat. HM \$6.75
- NIGHT EDITION [793] (SCHREINER 1981) M, 35", Dark inky blue falls silvery blue standards & lemon to light gold beards. Well branched stems. \$5.00
- NIGHT HAWK [795] (BENSON 1973) M, 36", Deep purple violet self, purple beards. HM \$5.50
- NIGHT RULER [796] (M. HAMBLEN 1990) M, 39", Ruffled deep inky purple with a black sheen, beards and all. AM \$7.50

NO DOWN PAYMENT [798] (BLACK 1996) L, 33", Heavily laced warm pink standards. Buff falls edged pink. Slight musky fragrance. \$12.75

NORDIC SEAS [800] (MOHR 1982) 30", Exquisite ruffling, fine contrast between deep velvety blue falls & pale lavender standards. HM \$7.00

NORTHWEST PROGRESS [802] (SCHREINER 1997) EM, 34", Ruffled light blue standards with dark violet marking. Dark violet black falls with bright yellow beards. HM \$15.75

OKLAHOMA CRUDE [807] (BLACK 1989) M, 33", Satiny dark purple standards, velvety black falls, ruffled. Mustard beards HM \$7.25

OLYMPIAD [810] (GHIO 1984) EL, 34", Blue white with deeper blue midrib & fall center. AM \$6.00

ORANGE HARVEST [812] (B. JONES 1988) E, 32", Ruffled bright medium orange self with tangerine red beards. Slight fragrance. \$10.25

ORANGE JUBILEE [814] (SCHREINER 1993) M, 38", Heavily ruffled vibrant orange self with tangerine beards. HM \$18.75

ORANGE SLICES [799] (NISWONGER 1987) ML, 33", Subtly orange & pink tones produce an unusual color with bright orange beards. Strong & vigorous. AM \$6.75

ORANGE WAVE [818] (M. MOHR 1988) M, 32", Valencia orange self red orange beards. \$6.75

ORCHID WINE [819] (BLYTH 1976) M, 36", Orchid mulberry undertoned rose. Bright red-tangerine beards. \$5.50

OREGON SKIES [820] (SCHREINER 1991) EM, 34", Bubbly ruffled clear blue tones, like a summer sky. Strong stems, well-spaced branches & 10 buds. AM \$7.00

ORIENTAL ALABASTER [821] (BLYTH 1986) ML, 38", Ruffled white & amber apricot amoena with orange beards. \$8.75

OUTRAGEOUS FORTUNE [822] (SCHREINER 1989) 37", Blended rosy tan standards, tanish rose violet falls, near white center stripe, lavender flash at tip. Nicely ruffled, tangerine beards. HM \$8.75

PACIFIC GROVE [824] (W. LUIHN 1981) EM, 38", Large plant, sturdy stems. Smooth attractive medium blue. HM \$6.00

PACIFIC SHORES [825] (BABSON 1979) ML, 38", Blue-white standards & deep blue-violet falls, a pattern of white veining radiating from blue white beards. HM \$5.75

PAGAN DANCE [827] (BLYTH 1989) EL, 30", Rich deep violet tones. Velvety black spot on falls with 3/8" violet rim highlighting ruffled edges. Burnt tangerine beards. Australian rebloomer. \$12.50

PAGAN PINK [828] (BYERS 1988) M, 36", Ruffled & laced rich pink. Space age with long amethyst horns protruding from bright orange beards. HM \$7.50

PALAIS ROYALE [830] (SCHREINER 1978) M, 35", A delicate pure orchid pink. Good substance on splendid stems. \$5.50

PARADISE [833] (GATTY 1980) ML, 33", Lacy ruffled peach-pink. Slightly creamier falls strongly flared. Beards orange. AM \$6.00

PEKING SUMMER [838] (SCHREINER 1984) ML, 40", Laced & ruffled variegata. Amber standards over rich smooth rose maroon falls. HM \$5.50

PENGUIN PARADISE [840] (MARYOTT 1984) EM, 36", Pure white heavily ruffled standards. Blue violet falls with white rays extending out from yellow beards. \$7.75

PERFECT GIFT [841] (KEPPEL 1996) M, 34", Heavily ruffled, deeply fluted clear pale pink with pinkish beards. \$14.50

PERFECT INTERLUDE [842] (SCHREINER 1984) M, 42", Beautiful new yellow amoena with an eye catching profile. Near white standards, arched & all petal shave graceful ruffling. HM \$6.00

PERFECTA [845] (DUNN 1984) ML, 34", Dark red violet with white area at midrib & white around violet beards. \$8.50

PHARAOH'S GOLD [849] (O. BROWN 1980) M, 33", Rounding & flaring falls of rich gold deepening in the beautifully laced edges. Deep orange beards. HM \$5.50

PINK ATTRACTION [852] (HALL 1988) EM, 30", Ruffled light pink, violet streaks below orange beards \$15.75

PINK BOW [853] (SHOOP 1973) M, 36", Ruffled cool pink self, bright tangerine beards. \$5.50

PINK MEMORIES [858] (BURGER 1985) L, 40", Heavy blooming ruffled medium pink. \$8.50

PIRATE'S QUEST [864] (SCHREINER 1992) EM, 36", Ruffled excellent golden self. Large vigorous bloom make a showy spot in the garden. HM \$7.75

PLAY WITH FIRE [868] (SCHREINER 1987) M, 36", An exquisitely ruffled, sparkling red. Heaviest ruffled red & shines from within. HM \$8.75

PLAYBOY PRINCE [869] (BENSON 1981) M, 38", A beautiful ruffled deep blue self, medium blue beards. \$5.50

PLEATED GOWN [870] (RODERICK 1981) ML, 38", Heavily pleated & ruffled iris, medium yellow standards & white falls, yellow beards & hafts. Very popular. AM \$5.50

PLEDGE ALLEGIANCE [871] (SCHREINER 1984) EM, 37", Delicately ruffled & fluted rich blue-violet self. Good bud count & branching. AM \$6.00

SPECIAL SELECTION - See page 28

- POINT MADE [874] (INNERST 1988) EM, 32", Unusual two-toned smoky plicata. Buff tan standards are lightly veined in violet. White falls are speckled & edged deep purple markings. HM \$6.00
- POLAR SEAS [875] (KEPPEL 1987) E, 35", Showy & ruffled lavender blue standards with violet falls carrying a white center spot. \$6.75
- PRECIOUS MOMENTS [879] (GATTY 1982) M, 38", Large & ruffled pastel reverse bicolor. Domed soft cream yellow standards, white falls, cream hafts & yellow beards, falls flared. Well branched. AM \$6.00
- PREMIER EDITION [880] (SCHREINER 1989) EM, 39", Large blue white standard & blue lavender falls. White beards tipped yellow. \$7.50
- PRESENCE [881] (GATTY 1987) EM, 32", Well branched broad mauve toned light pink. Salmon beards shaded lilac. HM \$8.50
- PRIDE OF OKLAHOMA [883] (DYER 1980) E, 32", Elegant & lightly ruffled, well formed solid rich red self, clean smooth hafts brown beards. \$5.50
- PRINCE GEORGE [884] (SCOOP 1997) M, 37", Flashy bicolor. White standards, blue purple falls with big white sunburst around bittersweet orange beards. HM \$15.75
- PROUD TRADITION [886] (SCHREINER 1990) EM, 36", Blue bitone with classic form. Wide ruffled deep hyacinth blue falls & silver-blue standards. AM \$12.00
- PUNKIN PATCH [891] (DENNEY McMWHIRTER 1989) ML, 37", Delectable laced light apricot orange tones. Good growth habits. HM \$6.00
- PURE-AS-THE [892] (INNERST 1989) ML, 36", Lovely white with yellow beards. Lavish ruffles & laced edges of this child of Laced Cotton. Fragrant. AM \$7.25
- PURPLE PEPPER [895] (NEARPASS 1986) EM, 34", Falls are white covered with blue-purple dots. Standards lavender blue with light dotted centers. HM \$6.00
- RASPBERRY FRILLS [902] (SCHREINER 1984) M, 39", A bouncy whirly laced raspberry. A warm mulberry rose with a spotlight of white below the beard, excellent. HM \$6.75
- REBECCA ANNE [909] (ALLEN 1984) M, 38", Very pale blue self, darker blue beards. \$4.50
- RED AT NIGHT [910] (ERNST 1992) 36", Rich velvety dark red with yellow beards. \$7.75
- RED LION [913] (HAGER 1986) EM, 37", Silken deep red with a touch of crimson. Dark ruby tone, smooth hafts & bronze beards. Lightly ruffled. HM \$6.00
- RED ROSE [914] (POWELL 1984) ML, 35", Reddish in appearance, but don't expect rose red. \$6.75
- RED TORNADO [916] (SCHREINER 1988) ML, 38", Lightly ruffled smooth red tones of maroon-brown. Gold to brown beards. \$10.50
- REMBRANDT MAGIC [918] (BLYTH 1993) EM, 36", Brown bitone with standards finished in muted mocha tones, lavender at midribs. Slightly ruffled rich reddish brown falls. Gold blaze & beards. \$14.75
- RENAISSANCE FAIR [919] (SCHREINER 1985) ML, 34", Splash of rich orchid highlights spicky cinnamon watermelon. Bright red orange beards. \$7.25
- RENOWN [920] (ZUBRIGG 1992) VE, Oyster white self with light yellow beards. \$8.75
- RIDE THE WIND [925] (SCHREINER 1991) M, 38", Slightly ruffled & flaring clean blue amoena. Pure white standards & delft blue falls. HM \$6.00
- RISING TIDE [928] (STAHLY 1980) An amoena with clean medium blue falls & yellow to white beards. \$5.00
- RITE OF SPRING [929] (HAGER 1995) M, 36", Blended violet standards falls have violet center blot fading to edges. Violet beards. \$14.75
- RIVER HAWK [930] (PLOUGH 1979) ML, 38", Richly tailored bicolor of plush blue purple & silvery lavender. Ruffled silvery lavender standards contrasting against deep blue black falls. \$5.50
- RIVERBOAT BLUES [931] (SCHREINER 1991) ML, 38", Large rich mid-blue ruffled flowers. White haft markings around white beards tipped yellow. Strong stems. AM, HM \$8.50
- ROBBIE LEE [932] (DENNEY 1978) M, 35", Large ruffled French-blue, white beards tipped yellow. AM \$5.50
- ROBUSTO [933] (BLACK 1984) ML, 36", Standards creamy orange, pinkish lavender infusion up mid rib. Falls creamy orange, pinkish cast, orange beards. ML \$5.50
- ROLE MODEL [936] (DENNEY 1988) EM, 36", Ruffled melon rosy tan standards with peach influence. Falls same but darker with lighter area below tangerine beards. Slight fragrance. \$10.75
- ROLLER COASTER [937] (BLACK 1984) L, 36", Breath taking roller coaster ruffling. Standards smooth smoky raspberry. Falls pale pearl grey-white, light raspberry overlay. Burnt orange beards. \$6.75
- ROLLING THUNDER [938] (SCHREINER 1985) ML, 36", A sleek clean cut unusual shade of brilliant violet. \$5.50
- ROSA NOVA [939] (SCHREINER 1991) M, 35", Raspberry tones, heavy ruffling & lacing on well-substantiated petals. Bright tangerine beards. HM \$8.75

ROSARITA [941] (KEPPEL 1989) EM, 38", Luscious raspberry tones with heavy ruffling & lacing on well-substantiated petals. Bright tangerine beards. HM \$12.75

ROSELENE [942] (SCHREINER 1981) M, 38", Standards orchid rose on buff, falls brownish rose edges around apricot cream, rusty orange red beards on white patch. HM \$6.00

ROSETTE WINE [944] (SCHREINER 1989) M, 37", A unique uniform self, a slight hazy dusting of rose to salmon. Ruffled & laced with a shrimp rose beards. AM \$6.00

ROYAL BALLET [945] (MOHR 1978) ML, 38", Tall & ruffled deep royal blue self, blue beards. HM \$5.50

ROYAL ELEGANCE [949] (GATTY 1988) EM, 36", A big wide heavily ruffled chicory blue, pale blue beards tipped yellow. HM \$6.75

ROYAL INTRIGUE [950] (SCHREINER 1991) EM, 38", Large rich velvety deep royal purple self. Well branched & sturdy stems. Ruffled. \$8.75

RÜSTLER [955] (KEPPEL 1988) M, 37", Antique gold standards flushed rose & henna fall spaling to antique gold margin. Gold beards. Sweet fragrance. AM \$7.75

SAIL MASTER [957] (BURGER 1974) M, 36", Standards golden butterscotch. Falls blue violet. Large & flaring. \$5.00

SANTANA [960] (KEPPEL 1978) M, 36", Ruffled bright mimosa yellow ground plicata. Standards suffused rich brown, falls have solid 1/2" brown border. HM \$5.50

SAPPHIRE HILLS [961] (SCHREINER 1971) M, 36", Ruffled medium blue with chromatic-blue shading. Fragrant. AM \$6.00

SATIN GOWN [963] (GATTY 1978) M, 32", Ruffled smooth, clear light pink, deeper hafts. Chinese orange beards. \$5.00

SCENARIO [967] (HAGER 1979) M, 36", Rosy violet glow at base of standards diffuses into lavender tinted, silver toned edges. Tan bases on lavender-violet falls. Beards yellow tipped blue-white. \$5.00

SCENTED BUBBLES [968] (BYERS 1988) 36", Medium bluebird blue self with long blue spoons. Fragrant. \$10.50

SCHORTMAN'S GARNET RUFFLES [969] (SCHORTMAN 1981) EM, 38", Deep garnet red, excellent heavy ruffling. HM \$8.00

SCINTILLATION [970] (SCHREINER 1981) M, 34", Luscious orchid pink falls capped with snowball white standards. Sparkling golden beards. HM \$6.50

SEA BRIGHT [971] (SCHREINER 1972) L, 40", A well branched sparkling silver blue with 8-10 buds. \$5.00

SEA OF JOY [974] (SCHREINER 1985) M, 38", Intensely ruffled pure blue. Boisterous fully rounded flowers carried on well branched stems. White tipped beards. HM \$5.50

SEAKIST [973] (SCHREINER 1997) ML, 38", Ivory white standards with sky blue wash on falls complement the standards. HM \$15.75

SHEER ECSTASY [981] (SCHREINER 1996) EM, 36", Ruffled raspberry-rose with tangerine beards. Absolutely enchanting tones. HM \$10.00

SHIPSHAPE [982] (BABSON 1969) EM, 38", Deep medium blue. Closed standards, flaring falls. DM \$6.00

SIERRA GRANDE [983] (SCHREINER 1992) M, 38", Ruffled new blue amoena. Snowy white standards, medium blue falls pale edges. AM \$8.75

SIGNIFICATE OTHER [986] (ERNST 1994) 38", White standards with medium blue violet falls. Bright yellow beards. \$10.75

SILENT PATRIOT [987] (S. ROBERTS 1976) M, 36", A ruffled medium blue with show stalk branching. HM \$5.00

SILKEN AIRE [988] (BLACK 1989) L, 36", Standards coral, falls a butter to peach blend. \$6.75

SILVER FLOW [998] (HAGER 1983) M, 36", Large mid lavender, falls paling to silvery white except at the lacy edges. HM \$6.00

SILVER SHOWER [999] (SCHREINER 1974) M, 36", Lacy bright pearly white. Bright red-tangerine beards. HM \$5.50

SILVER YEARS [1000] (HAGER 1980) M, 38", Blue-silver standards with snow white falls. Ruffled, lightly laced & durable. Well formed. AM \$6.00

SILVERADO [1002] (SCHREINER 1987) M, 38", Cool blue-white. Lavishly ruffled flowers displayed on sturdy nicely branched stems. DM \$6.00

SIMPLY PRETTY [1003] (GATTY 1986) EM, 34", Light lemon yellow slightly deeper hafts & paler spot at tip of yellow beard. Horizontal falls ruffled, waved, laced. HM \$6.00

SKIERS' DELIGHT [1007] (SCHREINER 1982) ML, 36", A pure ruffled white, capturing the iridescence of fresh fallen snow. . AM \$8.00

SKY HOOKS [1009] (OSBORNE 1980) EM, 36", Ruffled & laced yellow standards, flaring white falls, ruffled yellow edges. Yellow beards blue horns. Fragrant. AM \$5.50

SKY SEARCH [1010] (GUALTER 1992) M, 38", Beautiful ruffled sky blue. Near white beards. Slightly darker blue edging on falls. Fragrant. \$6.75

SKYBLAZE [1011] (KEPPEL 1987) M, 35", Ruffled clear chicory blue with burnt orange beards. \$8.75

SKYWALKER [1012] (SCHREINER 1996) M, 36", Creamy white shades uniquely blend, streak & wash azure blue tones. White splashed edges lift ruffled petals. Excellent. AM \$20.00

SNEAK PREVIEW [1013] (R.NELSON 1980) E, 38", Soft apricot orange.. Ruffled with heavy substance & tangerine-red beards. \$6.00

SNOW GLORY [1014] (MURRAY SMITH-CANADIAN 1984) M, 38", Canadian ruffled white self, green ribs & veins. \$6.00

SNOW MOUND [1015] (SCHREINER 1976) M, 36", Deep velvety pansy purple falls & crystal white standards. Ruffled well substandard, excellent stems. HM \$6.00

SNOWBROOK [1016] (KEPPEL 1987) EM, 36", Snowy white petals with narrow columbia blue plicata edge on falls. White to lemon beards. \$6.75

SORCERESS [1021] (KEPPEL 1982) EM, 34", Ruffled, laced peach standards infused lavender. Flared ivory peach falls, wide sanded plicata band & hafts reddish violet. Orange beards. HM \$5.50

SOUTHLAND GRAPE [1023] (BURCH 1978) L, 34", A dark violet self, falls fading slightly to full violet near the tip of glowing orange beards. Grape fragrance. AM \$6.75

SPELLBREAKER [1028] (SCHREINER 1991) ML, 36", Rounded & ruffled cranberry-violet toned petals. Rich velvety texture with bushy white beards. \$10.50

SPICED CIDER [1029] (SEXTON 1989) EM, 36", Yellow gold standards with heavily sanded reddish rust markings on falls. Sweet fragrance. HM \$10.75

SPIN DOCTOR [1031] (DAVIS 1995) E, 32", Ruffled soft mustard yellow standards with creamy yellow ground falls veined & heavily dotted purple. Cream beards tipped yellow-orange. HM \$14.50

ST. LOUIS BLUES [1038] (SCHREINER 1979) L, 35", Charmingly laced blue iris with white centers by the beards. Ruffled petals enhance its elegance. AM \$5.50

STAIRWAY TO HEAVEN [1039] (LAUER 1993) EM, 39", Wide ruffled blue amoena. Near white standards & flaring medium blue falls. Excellent. DM \$15.75

STAR SAILOR [1041] (SCHREINER 1995) M, 38", Mariner's delight, bouncy ruffled petals of cerulean blue shading with milky white beards sparkle like white caps. HM \$12.00

STATUS SEEKER [1047] (GARTMAN 1990) ML, 38", Ruffled salmon coral self. Orange red beards. HM \$9.50

STELLAR LIGHTS [1050] (AITKEN 1986) ML, 36", Deep blue purple with white spot around white beards. HM \$6.75

STEPPING OUT [1051] (SCHREINER 1964) ML, 38", Rich blue-violet & white plicata. Large & outstanding. DM \$6.00

STRAWBERRY FIELD [1053] (SILVERBURG 1987) L, 36", Standards rich deep pink with apricot influence & falls lighter pink. \$6.00

STRAWBERRY SENSATION [1054] (POWELL 1978) M, 32", Sensational ruffled strawberry pink self with red beards. \$5.00

SUAVE [1055] (SCHREINER 1980) EM, 40", You like something unusual, this is it. Standards light tan yellow, blue halation. Falls a silky, rich purple. \$5.00

SULTRY MISS [1058] (KEGERISE 1986) ML, 35", Pink peach standards with ruffled rosy mauve falls edged with a 1/2" band of deeper violet. Tangerine beards. \$9.75

SULTRY SISTER [1060] (POWELL 1984) EL, 36", Shiny blue-black bronze beards & fragrant. \$6.00

SUMMER FROST [1062] (J. McMILLEN 1986) ML, 36", Standards very light blue white fading to frosty white, falls frosty silvery white. Ruffled & laced. Orange beards. \$6.00

SUMMER LUXURY [1064] (E. SMITH 1973) M, 34", A well ruffled white, gold hafts. Orange beards. \$5.50

SUN DAPPLED [1065] (NISWONGER 1984) E, 32", Ruffles yellow amoena. Clear white standards & bright yellow falls. HM \$6.50

SUN KING [1068] (STAHLY 1977) 36", Ruffled creamy white. Bright yellow hafts & beards. \$6.00

SUNDAY PUNCH [1069] (CRANDALL 1977) ML, 36", An intense mixture of red dark hues. A standout with good substance. \$6.00

SUPERSIMMON [1073] (M. PARKER 1978) M, 32", Eye-catching, lightly ruffled velvety bright orange, small white blaze at tip of deep orange beards. HM \$6.00

SUPERSTITION [1074] (SCHREINER 1977) M, 36", Rich dark multi budded beauty. Dark as printers ink, hint of maroon deep within the ebony-black tints. Fragrant. AM \$6.00

SUPREME SULTAN [1075] (SCHREINER 1988) ML, 39", Large flowered flamboyant variegata. Golden standards & rich mahogany red falls. Extra sturdy stalks. AM \$6.00

SURF'S UP [1076] (WEILER 1979) M, 36", Lightly ruffled large medium blue. \$5.00

SWAZI PRINCESS [1077] (SCHREINER 1978) M, 36", Stunning ebony colored, indigo black self, self beards. AM \$6.00

SWEET MUSETTE [1080] (SCHREINER 1986) ML, 37", Broad lacy flamingo & rosy bitone. Standards light pink lavender contrasting against rich rouge falls. Tangerine beards. AM \$5.50

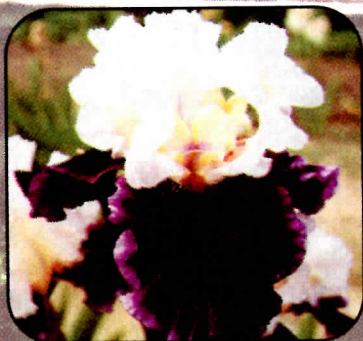


Early Order Bonus (E.O.B.)

15% Discount on Orders over \$50.00 if received before May 1st, 2003

Extra Extra Bonus (E.E.B.)

Orders over \$100.00 we will also cover the regular shipping, if received before May 1st.



BRAZILIAN HOLIDAY



LAVENDER SUNSET



**FOREVER BLUE
50B**



ORANGE SLICES



JAZZ FESTIVAL



**RAPSCALLION
50B**



DESIGNING WOMAN



CORAL SUNSET



**GOLDEN CHILD
50B**



**PELE
SDB**



GOOD VIBRATIONS



**WATCH FOR OUR SIGN ON COUNTY
ROAD 13 AT PLEASANT VALLEY ROAD, 15
MILES SOUTH OF 401 AND HWY #59**



**TRAJECTORY
SDB**



JENNA

BLOOM SEQUENCE

- *Miniature Dwarf Bearded Iris May 1st - 15th*
- *Standard Dwarf & Intermediate Iris May 10th - 30th*
- *Miniature Tall & Border Bearded Iris June 1st*
- *Tall Bearded Iris May 30th - June 25th*
- *Siberians June 1st*
- *Daylilies Early July to Mid August*



**JAZZMATAZZ
SDB**



GENTLE DRAGON



MIDNIGHT EXPRESS



KEKIONGA



CELEBRATION SONG

SWINGTOWN [1084] (SCHREINER 1996) L, 36", Mulberry-claret self with exquisitely ruffled petals. Sweet lavender fragrance. AM \$8.75

TEMPLE GOLD [1088] (LUIHN 1977) EM, 38", Laced & ruffled yellow self, orange beards. Well branched. AM \$6.00

TEMPLE SPIRE [1089] (GAULTER 1982) L, 38", Standards light pink, delicate pink falls. Deep orange beards & a deeper pink lacing at lower fall edge. \$6.00

TENNESSEE VOL [1090] (NISWONGER 1993) EM, 33", Ruffled & flaring brilliant orange flowers with bright tangerine beards. HM \$14.75

THORNBIRD [1099] (BYERS 1989) M, 35", Lightly ruffled greenish tan to brown. Violet beards, horns & spoons. Slight sweet fragrance. DM \$7.50

THRILLER [1101] (SCHREINER 1988) ML, 36", An exciting intense cerise-claret. Smooth uniform color accented by deeper purple beards. Good substance, excellent branching & fragrant. AM \$6.75

THROB [1102] (WEILER 1991) ML, 37", Laced brilliant cadmium yellow self. Golden orange beards. Fragrant. HM \$15.00

THUNDER MOUNTAIN [1103] (SCHREINER 1989) EM, 36", Deep royal blue purple self. Wide form and well substance. HM \$6.75

TIBURON [1105] (GAULTER 1971) M, 36", Fringed deep orchid with red beards. Fluted & waved. HM \$6.00

TIMESCAPE [1109] (HAGER 1990) EM, 42", Ruffled marbling of lavender blue tones on white ground. White beards tipped yellow. AM \$8.75

TITAN'S GLORY [1110] (SCHREINER 1981) EM, 37", Absolutely uniform dark violet. Well branched, high bud count. DM \$6.00

TOBACCO LAND [1111] (POWELL 1987) M, 36", Rich deep mahogany brown with golden brown shoulders. Domed standards & flaring falls. \$7.75

TOM JOHNSON [1113] (BLACK 1996) 35", Striking dark purple with bright red orange. AM \$10.50

TOMORROW'S CHILD [1114] (BLYTH 1984) ML, 36", Standards pastel orchid-toned pink. Falls rich velvety red-purple, 1/4" border matching standards. Beards tangerine red. Ruffled & laced. Australian. AM \$6.75

TOTAL OBSESSION [1115] (TOMPKINS 1993) ML, 37", Large lavender-purple bitone. Pale mauve standards. Ruffled falls of blackish violet, white hafts with dark lines. Yellow beards. \$10.75

TOTAL RECALL [1116] (HAGER 1992) EL, 36", Vigorous rebloomer. Delicately tinted pearly white, yellow hafts. AM \$9.75

BEEF BBQ JUNE 7th McMillen's Iris Garden
\$12.00 Adults Children under 12 \$6.00

TREVI FOUNTAIN [1120] (B. JONES 1978) ML, 34", Ruffled & laced white flushed apricot-gold standards, edged more deeply on falls. Apricot orange beards. HM \$5.75

TRIPLE WHAMMY [1122] (HAGER 1990) ML, 40", Bright yellow standards. Falls lavender-white center, deep gold hafts, yellow edge. Purple beards & horns. AM \$7.50

TROPICAL NIGHT [1124] (SCHREINER 1970) EM, 36", Falls plush violet & standards blue, brownish beards. HM \$6.00

TWICE THRILLING [1130] (OSBORNE 1984) ML, 36", Ruffled clear peach pink with horns & spoons. Spoons are tipped orchid. Space age. \$5.75

TWILIGHT BLUSH [1131] (SHOOP 1975) EM, 36", Warm pink self with pink-tangerine beards. \$6.00

TWIST OF FATE [1133] (PALMER 1980) M, 32", A stunning color contrast. Pale lavender blue standards & deep velvety blue black falls & bronze beards. HM \$8.00

UNDERSEA ADVENTURE [1135] (BLACK 1986) ML, 33", Standards medium to light blue with darker bases. Falls white with pale blue lines down the center & pale blue hafts. HM \$6.00

UNFORGETTABLE FIRE [1136] (SCHREINER 1990) EM, 40", Gracefully arched standards of rich red velvet with flaring ruffled falls. HM \$7.75

UNFURLED FLAG [1137] (HAGER 1981) M, 36", Blue violet with yellow tipped white beards. Usually, 6 flaring falls & no standards. Good branching & buds. \$6.00

VANITY [1138] (HAGER 1975) EM, 35", Smooth, well formed & ruffled, perfect medium pink. Fragrant. DM \$6.00

VENETIAN WATERS [1141] (BLACK 1986) M, 36", Ruffled rich medium blue bitone. Frosted blue beards. \$6.25

VISION IN PINK [1144] (WOOD 1987) M, 36", Exquisite ruffled clear pink, lightening at center of falls to highlight bright tangerine beards. HM \$10.50

VISUAL ARTS [1145] (SCHREINER 1982) M, 38", Heavily fringed lacy edged. Rippled & crinkled rosy lavender is eye-catching. White beards. HM \$6.00

WABASH [1148] (WILLIAMSON 1936) M, 34", Historic Iris. White standards with deep reddish purple falls with delicate white wire rim on edges. DM \$5.00

WAKE UP CALL [1149] (BLACK 1990) L, 33", White standards with blush of yellow at base of midrib yellow styles. White falls \$9.75

WALTZING PRINCESS [1150] (SIMON 1982) M, 37", Ruffled orchid plicata, with coral beards. \$5.00

WAR CHIEF [1151] (SCHREINER 1992) EM, 37", Rich ruby non-fading red self. Abundance of bloom strong stems. Bright yellow beards. \$6.75

WARRIOR KING [1152] (SCHREINER 1985) ML, 36", Sheer intense deep glossy red with a velvet like sheen. HM \$6.00

WEDDING CANDLES [1154] (SCHREINER 1982) EM, 36", Sparkling yellow amoena. Ruffled yellow falls, no haft pattern, setting off pristine beauty of creamy white standards. AM \$6.00

WESTLAND GOLD [1157] (SIMON 1985) M, 36", Ruffled & laced gold self. \$8.75

WILD JASMINE [1162] (HAMNER 1983) ML, 33", Yellow standards, ruffled flaring white falls, heavy brassy brown plicata. Gold beards. AM \$6.50

WINNERS CIRCLE [1165] (PLOUGH 1972) M, 34", Dark blackish violet, round white patch below beards. HM \$6.00

WINTERSCAPE [1170] (McWHIRTER 1985) M, 38", Gorgeous blue white, shadings of orchid & light blue beards. Nicely ruffled heavily subtanced. HM \$6.00

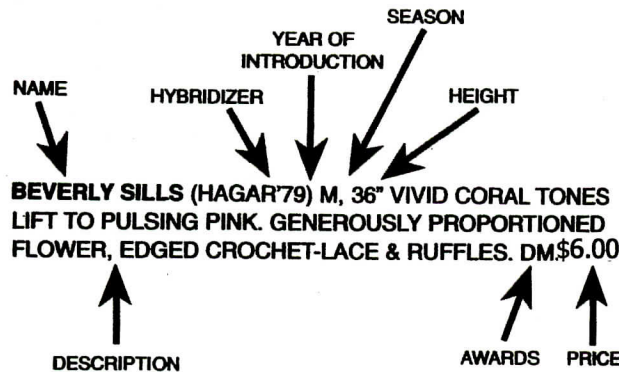
WITCHES' SABBATH [1172] (MARYOTT 1986) M, 37", Heavily ruffled purple black with bright antique gold beards. \$8.25

WITCHING [1174] (BLYTH 1993) E, 35", Lilac blue standards. Lilac falls heavily overlaid in violet, brown & golden tan. Dark violet brown beards. \$14.75

WITCH'S WAND [1173] (BLYTH 1988) ML, 36", Deep violet standards, blackish violet falls, orange red beards. Startling. HM \$15.50

YAQUINA BLUE [1176] (SCHREINER 1992) M, 37", Large ruffled, rich marine blue. Yellow beards tipped white. Extremely vigorous. AM \$10.75

YUKON FEVER [1180] (SCHREINER 1986) ML, 40", Finely ruffled bright golden yellow consistently displays several perfect blooms at once. Excellent substance, gracefully poised on magnificent stalks HM \$10.00



JOIN THE SOCIETIES

CANADIAN IRIS SOCIETY



Cathy Boyko
R. R. 9, Bains Road,
Dunnville, On. N1A 2W8
Annual \$15.00
Triennial 35.00
Life 200.00

Cheque payable to CIS
CIS Website; www.members.rogers.com/cdn-iris

AMERICAN IRIS SOCIETY



Anner M. Whitehead
P.O. Box 14750,
Richmond, VA 23221-4750
Annual \$20.00
Triennial 43.00

Payable in U.S. currency
Website www.irises.org

IRIS DATES to REMEMBER for 2003

JUDGES TRAINING SESSION – March 15

RBG for more info e-mail: rives@rogers.com

BEEF BBQ - McMillen's Iris Garden

June 7th 2003 5:30 to 7:00 PM

Order tickets by May 28th

Adults \$12.00 Children under 12 \$6.00

Send cheque payable to Gloria McMillen

SIBERIAN-SPECIES IRIS CONVENTION

June 12 – 15th Burlington

<http://members.rogers.com/iris2003>

Contact Chris at 905-567-8545

CIS IRIS SHOW

June 12th, RBG Burlington:

May 31st Toronto at Don Mills Centre

IRIS AUCTIONS

16 Aug. - Civic Garden Center

Aug 10th - RBG, Burlington

Aug 16th - London, 81 Wilson Ave

Contact: Ken Viner 519-660-0313

ANNUAL MEETING & Luncheon

Sept 20th - RBG, Burlington

Contact Ed Jowett 905-936-3031



MINIATURE TALL BEARDED

Small dainty flowers on thin graceful stalks.
16" to 25" blooming end of May & June

AACHEN ELF [17] (KENNEDY 1984) M, 20", Standards yellow, falls lavender edged yellow. \$5.00

ABRIDGE VERSION [19] (HAGER 1983) M, 24", Smoky pink self, light tangerine beards. \$5.00

ANGELS [92] (L. MILLER 1995) EM, 21", Medium amethyst standards & sapphire blue falls with deeper veining. Round flaring petite form, gold beards. AM \$6.50

BUMBLEBEE DEELITE [161] (J & G NORRICK 1986) EM, 18", Bright yellow standards, dark maroon falls. HM \$5.00

CHICKEE [223] (DUNDERMAN 1979) M, 19", MTB Ruffled medium yellow self. AM \$4.00

CONSUMMATION [285] (WELCH 1977) M, 18", White standards with dark blue falls edged white. \$5.00

DAPPLED PONY [332] (MEEK 1985) M, 22", White ground plicata with violet-blue dots. HM \$6.50

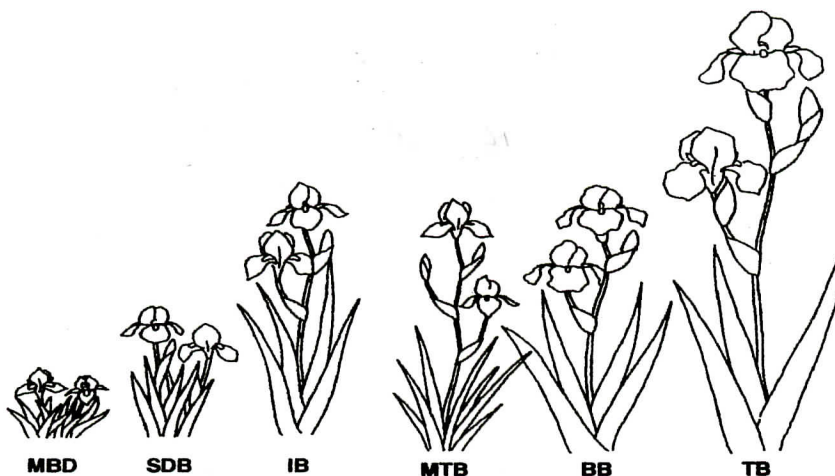
DOTTED DOLL [378] (J&L FRY 1986) M, 18", White, dotted blue with bronze beards. HM \$4.00

DOTTIE JOY [379] (WITT 1987) 21", Warm white ground flushed & sanded orchid style blended yellow & orchid. White ground orchid. Yellow beards. \$8.75

GRANDPA'S GIRL [553] (FISCHER 1984) M, 16", Yellow standards and red-violet falls, edged yellow. HM \$5.00

LADY EMMA [667] (F. JONES 1986) M, 24", Primrose yellow. Yellow beards. HM \$5.00

WHOOPEM UP [1159] (D. BRADY 1974) EL, 27", Flashy, brilliant yellow standards & clear red falls with bright yellow border. AM \$5.00



BORDER BEARDED IRIS

Smaller & shorter version of Tall Bearded.
and blooming the same time. 16" to 27"

BATIK [94] (ENSMINGER 1986) ML, 26", White ground, striped royal purple with yellow beards tipped white. AM \$6.00

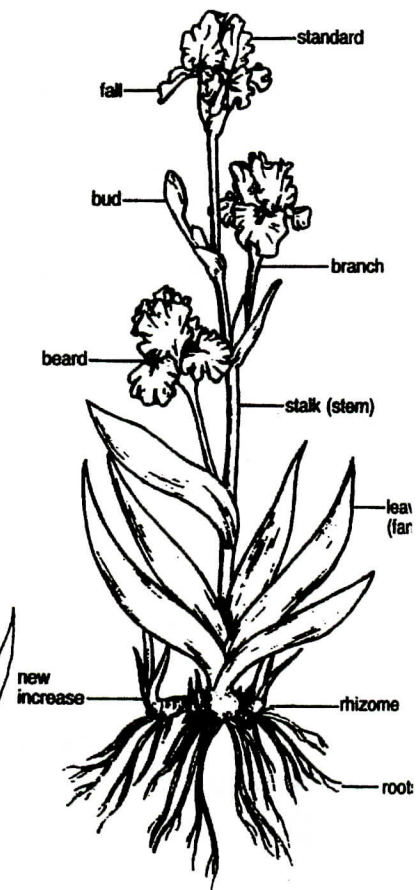
BORDERLINE [134] (GHIO 1984) ML, Pure white & mid yellow amoena with white borderline on falls. 26 \$6.75

DANGER HOUR [331] (GATTY 1984) M, 35", Border height with maroon standards & darker falls. HM \$6.00

SONJA'S SELAH [1020] (ENSMINGER 1989) ML, 24", Snowy white standards, shrimp pink falls with white rims. Shrimp red beards. Very showy & fragrant. AM \$8.00

SPRING TWILIGHT [1037] (GATTY 1998) ML, 26", Nicely ruffled greyed mulberry, metallic sheen. Flesh hafts & flared falls. Root beer beards amethyst at end. \$15.75

The Bearded Irises



MINIATURE DWARF BEARDED

Earliest and smallest bearded iris. 4" to 8" Good for rock gardens & borders. Blooming end of April & May.

ALPINE LAKE [1186] (WILLOTT 1981) ML, 6", White standards slightly tinged blue. Light blue falls & beards. AM \$3.50

APRIL BALLET [1187] (PALMER 1973) E, 7", Light blue, violet spot on the falls & white beards. HM \$3.00

BABY PINK [1188] (A. BROWN 1975) L, 8", Pale orient pink self with pink beards. HM \$3.00

BETWIXT [1190] (A & D WILLOTT 1987) E, 7", Ruffled light violet with full violet spots on the falls. Creamy white beards. HM \$3.50

BLENDED BLUE [1191] (F. DYER 1978) E, 6", Blended medium blue self. \$3.00

BLUE BERET [1192] (E. ROBERTS 1967) VE, 6", Bright blue, purple spot on falls & light blue beards HM \$3.00

BLUE WIND [1193] (SPENCE 1982) E, 8", Ruffled diamond dusted light blue with snow whitebeards. HM \$3.25

BRIGHT SPRING [1195] (WELCH 1956) E, 6", Standards white, falls bright yellow narrowly edged white with white beards \$3.00

BRIGHT WHITE [1196] (WELCH 1957) E, 7", Snowy pure white self. HM \$3.00

DAISY FRESH [1198] (WILLOTT 1988) ML, 7", White standards, yellow midrib. White falls with yellow spot. Pale yellow & blue beards. \$5.00

DIPTO [1199] (HAGER 1982) EL, 7", White standards & dark red maroon falls with whiteedges. White beards. AM \$5.00

ELFIN MAGIC [1200] (A & D WILLOTT 1990) ML, 8", Pale blue with yellow green spot. Yellow beards. AM \$5.00

FLIRTY EYES [1201] (E. ROBERTS 1973) M, 8", Snow white with a light blue spot on falls HM \$3.00

FOOTPRINT [1202] (A. BROWN 1971) E, 6", Standards yellow, falls red-brown, bordered barium, ivory beards. HM \$3.00

GOLDEN EYELET [1205] (R.&L MILLER 1983) ML, 5", Bright yellow orange with fuzzy orange beards. AM \$4.00

GRAPELETT [1206] (ATKIN 1989) M, 6", Deep grape purple self. AM \$5.00

LEMON PUFF [1207] (DUNBAR 1969) EM, 7", Lemon-yellow & white bicolor, creamy white beards. HM \$3.00

MARK [1209] (R. LOVE 1974) E, 4", A velvety blue-purple self. \$3.00

MARSH IMP [1210] (J.D. TAYLOR 1972) E, 5", Pale blue falls with a darker flush & white beards \$3.00

MIDAS MITE [1211] (WILLOTT 1978) L, 7", Full yellow, deeper yellow around yellow & white beards. HM \$3.00

MINI PLIC [1212] (A. BROWN 1969) E, 6", White plicata with medium violet stitching at theedges. HM \$3.00

MITCHERNATCH [1213] (VAN NES 1960) E, 7", Dark purple standards, black falls & brown violetbeards. \$3.00

MOPPET [1214] (SIMONSON 1959) E, 5", Wisteria-blue self, red purple spot. Yellow beards. HM \$3.00

NANCY BUTTERFLY [1215] (HITE 1976) E, 5", Deep rich violet markings on cream. \$3.00

PIXIE FLIRT [1216] (WILLOTT 1989) ML, 8", Ruffled white stitched red violet with cream beards tipped red violet. AM \$3.50

RED ATLAST [1218] (L. MAHOOD 1970) L, 8", A bright red with a deeper fall spot, white beards. HM \$3.00

RED PIXIE [1219] (A. BROWN 1968) E, 5" Rose-red large dark ruby-red thumbprint on falls. HM \$3.00

SKY CAPER [1220] (WARBURTON 1963) E, 6", Pale bluish self extra nice. HM \$3.00

SLEEPY TIME [1221] (SCHREINER 1987) VE, 5", Pure light blue self with horizontal flare whitebeards. HM \$4.00

SMALL CIRCLE [1222] (A. BROWN 1973) EM, 6", Cream lavender with violet spot on falls. HM \$3.00

SNOWY RIVER [1223] (WILLOTT 1985) L, 6", Broad petaled blue white self, white beards. AM \$4.00

SNUGGLES [1224] (L. MILLER 1988) M, 6", Pale bluebird blue standards, violet veined overlay on falls with dark gold veining at hafts. \$5.00

SPOT OF TEA [1034] (BLACK 1989) E, 7", Brassy buff with red brown spot on falls white hafts & beards. HM \$6.50

STRAWBERRY CREAM [1226] (BOUSHAY 1989) ML, 6", Orient pink with lighter edge on falls. Bright redbeards. AM \$5.00

SUNNY SONG [1228] (WILLOTT 1987) M, 7", Light yellow standards and darker falls, pale yellow beards. \$3.50

ZIPPER [1229] (SINDT 1979) EM, 5", A smooth yellow, medium blue beards. \$3.00

STANDARD DWARF BEARDED

Blooming after SDB starting mid May.

16" to 28" stalks.

BABY BLESSED [87] (ZURBRIGG 1979) E, 10", Light yellow with small white spot on falls. Cream beards. Reliable rebloomer. AM \$4.00

BALKANA BABY [89] (BOSWELL 1987) M, 9", Pale blue violet standards, yellow midrib. Maroon violet falls with blue violet edge. Blue tipped beards. \$3.50

BALMY BREEZE [90] (A & D WILLOT 1987) ML, 13", Ruffled white, blue cast & small amount of yellow in hafts. White beards & yellow throats. \$3.50

BARNEY'S DELIGHT [93] (A & D WILLOT 1990) ML, 12", Ruffled apricot self with darker hafts & orange beards. \$3.50

BEDAZZLED [98] (BOUSHAY 1975) M, 22", Bright yellow standards & dark red brown falls edged yellow. \$3.50

BLUE SURF [125] (WILLOT 1985) EM, 12", Ruffled light blue, flushed deeper around light blue beards, amber hafts. \$3.50

BLUEBERRY SCOOP [126] (A & D WILLOT 1985) EM, 11", Light blue violet standards, fringed edges. Pale blue falls veined green in hafts. Blue violet beards. \$3.50

BRIGHT VISION [150] (SHOOP 1983) L, 10", Tall peach pink with deeper peach spot on falls. Tangerine beards. AM \$3.50

BUTTERSCOTCH CARPET [168] (CHAPMAN 1994) 10", Yellow tan standards with butterscotch spot on falls. \$3.00

CANDY APPLE [188] (M. HAMBLEN 1975) M, 12", A varnished smooth sweet red dwarf. AM \$3.50

CASPER'S SHADOW [200] (NISWONGER 1980) EM, 12", Blue grey standards, falls chartreuse blending to burgundy at centre. HM \$4.25

CHUBBY CHEEKS [237] (BLACK 1985) E, 12", Wide & ruffled violet, white ground plicata. Violet beards tipped tangerine. AM \$3.50

COMEBACK TRAIL [277] (NICHOLS 1991) M, 10", Yellow standards with broad ruffled cream falls. AM \$4.50

COOL MELODRAMA [287] (NICHOLS 1986) EL, 12", Ruffled veronica violet standards with lighter falls and darker hafts. White & orange beards. HM \$3.50

COURT MAGICIAN [305] (NICHOLS 1985) ML, 11", Ruffled purple standards, white centre blends into edge. Purple falls, white area around blue beards. AM \$3.75

DARK VADER [341] (R & L MILLER 1987) M, 11", Ruffled dark blue violet standards with black falls. Bushy blue beards. AM \$5.50

EASY MONEY [401] (NICHOLS 1986) ML, 14", Ruffled deep yellow gold with gold beards. \$5.75

FOREVER BLUE [484] (CHAPMAN 1997), 12", Light blue-violet self, contrasting dark violet blue beards. Rebloomer, very vigorous. HM \$5.00

FRUGAL [498] (BLACK 1997) E, 11", Golden yellow standards, darker edges & hafts on falls, brown plicata markings. Orange beards. \$6.75

GEAUGA LAKE [514] (A & D WILLOT 1985) M, 11", Ruffled light violet blue. Falls edge tinted olive, olive tan halo around violet beards. Reblooms. \$3.50

GENTLE GRACE [518] (J. BOUSHAY 1979) EM, 11", White, clear wistaria blue markings & spot on falls. White beards, yellow throat. \$4.00

GOLDEN CHILD [539] (BYERS 1989) EL, 13", Medium light yellow with bright golden center: blue white beards tipped orange. \$5.00

HAZEL'S PINK [572] (SCHMEIZER 1978) EM, 11", Full sized clear salmon flamingo pink. Tangerine beards. HM \$5.00

HIGH WIRE [581] (SCHREINER 1989) E, 10", Very pale lavender standards & red purple falls with white wire rim. Darker spot around purple violet beards. \$6.00

ICE ETCHING [602] (BLACK 1998) M, 14", White standard & style arms violet ribs. Violet sanded falls, white rim. HM \$7.00

ICED LEMONADE [603] (WILLOTT 1986) EM, 12", Ruffled pale yellow standards, falls warm white with yellow hafts. Yellow & blue beards. HM \$3.25

INDIAN JEWEL [609] (A. BROWN 1974) L, 11", White standards with enamel blue falls blending to white at edge. White beards blending to yellow in throat. HM \$5.00

INDIGO CROWN [610] (A & D WILLOT 1976) M, 10", Standards violet-blue, falls olive-green. Violet beards. HM \$3.75

JAZZAMATAZZ [626] (BLYTH 1987) ML, 15", Ruffled creamy lemon standards. Rich ruby falls with 1/4" creamy lemon edge. Gold beards tipped white. \$5.00

JEWEL LAKE [631] (A & D WILLOT 1981) EM, 11", Light violet blue standards & pale blue falls with green halos. Broad ruffled petals with light blue beards. HC \$4.00

KITTEN [656] (KEPPEL 1998) EM, 14", Ruffled yellow, goldenrod & green gives a tannish bitoned effect. Wistaria violet beards. HM \$12.75

LADY IN RED [669] (WILLOT 1973) M, 12", Red with brighter red overlay around gold & violet beards. \$5.00

LEMON CHARM [679] (A & D WILLOT 1984) EM, 12", Ruffled clear lemon with slightly deeper falls. Full yellow beards. \$4.00

LITTLE BLACK BELT [690] (NISWONGER 1980) M, 12", Blackish purple with pale blue beards. HM \$4.00

LITTLE BLUE BELL [691] (H. HITE 1976) EM, 9", Deep blue with bluer spot around white tipped beards. \$4.75

LITTLE PANSY [694] (SCHREINER 1976) VE, 10", Light lavender-lilac standards. Lavender-lilac falls with intense deep pansy purple center. \$4.25

LITTLE SHOWOFF [695] (HALL 1989) EM, 11", Lightly waved & ruffled pale ice blue. Bright lavender blue beards. AM \$4.00

LOVE [711] (HARDER 1975) EM, 11", A ruffled white self, white beards with orange deep in throat. HM \$5.00

MELON HONEY [751] (E. ROBERTS 1973) EM, 13", Cantaloup colored bitone, darker falls. AM \$4.00

MISTER ROBERTS [774] (WILLOT 1979) L, 12", Ruffled deep glowing yellow self, deep yellow beards. AM \$4.00

NOVELETTE [804] (WILLOT 1985) E, 10", Lightly ruffled full violet self with small spots of dark violet on falls. Light violet beards. Dainty. \$3.75

ORANGE TIGER [817] (B. JONES 1988) M, 11", Medium deep orange, darker orange beards. Slight sweet fragrance. AM \$5.00

PALE STAR [831] (B. JONES 1986) M, 12", Ruffled pale blue self. HM \$5.00

PASTEL DELIGHT [835] (WILLOT 1986) M, 11", Pinkish lilac flushed deeper at base of standards & flushed pink at sides of beards. HM \$4.00

PEACH BAVARIAN [836] (WILLOT 1978) M, 13", Light peach self with white beards, orange in throat. \$4.00

PEACH PETAL PIE [837] (NISWONGER 1992) M, 10", Wide ivory with pink wash. Intense pink near beard. AM \$6.00

PELE [839] (AITKEN 1993) ML, 11", Bright orange with deep rosy purple spot on falls. Red beards. Very different. HM \$6.50

PINK CAPER [855] (SHOOP 1986) EM, 10", Ruffled & flaring pink peach self. Bright deep tangerine red beards. \$5.00

POET LAUREATE [873] (A & D WILLOT 1989) EM, 11", Pink standards with bluish tint & pink falls amber hafts, fluted with blue beards. \$4.25

PUMPKIN CENTER [890] (JONES 1989) M, 10", Warm white with pumpkin orange spot pattern on falls. Tangerine beards. AM \$5.25

RAINMAKER [900] (NICHOLS 1986) ML, 15", Ruffled medium blue, brown hafts, white area below blue beards. HM \$4.75

RAPSCALION [901] (R.&L MILLER 1995) E, 10", Dark violet purple self, bushy blue beards. Scented. HM \$6.75

RICHES [924] (A. BROWN BY BOUSHAY 1976) M, 12", Peachy pink standards. Lighter falls with violet markings & tangerine beards. \$4.00

ROYAL DECREE [948] (NICHOLS 1988) 12", Purple violet with white ribs & center. Yellow beards. \$6.00

ROYAL SILK [952] (WILLOT 1984) E, 14", Full violet self with violet beards. HM \$3.75

RUSTY NAIL [956] (MESSICK 1993) EM, 12", Bicolor. Gold standards and rusty brown falls. HM \$6.75

SECRET PRINCE [977] (WILLOT 1988) EM, 12", Ruffled blue violet self. Dark violet beards. \$4.00

SOLAR FLIGHT [1019] (E.ROBERTS 1973) M, 14", Golden yellow self, broad tangerine beards. HM \$3.75

STARDATE [1044] (BLACK 1987) M, 11", Slightly ruffled clear medium blue standards, falls slightly darker, deeper spot. A sky blue gem. \$4.50

SUN DOLL [1067] (B. JONES 1985) M, 14", Ruffled medium yellow & yellow beards. AM \$5.00

THAT'S IT [1094] (HAGER 1980) M, 12", White, green veining. Yellow beards. HM \$4.00

THIRD CHARM [1096] (WEILER 1982) E, 10", Blue violet, large dark violet spot on falls. Lavender beards. Slight fragrance. \$4.25

TRAJECTORY [1119] (BLACK 1997) Dark purple with white luminata patch & white beards. HM \$6.75

TUMBLEWEEDS [1128] (BLACK 1987) M, 12", Ivory tan standards rimmed grey & butter tan plicata falls with red brown spot. Orange beards tipped blue. Slight musky fragrance. \$3.75

WEBMASTER [1153] (KEPPEL 1997) M, 12", Plum brown & cadmium lemon colors. Sharp intricate webbing covering the falls. Bronze beards. HM \$10.75

WESTAR [1156] (JONES 1985) M, 12", Pure white with deep blue beards. HM \$3.75

WIDOW'S VIEL [1160] (L. MILLER 1994) E, 11", Ruffled red violet, black ray area around dark violet beards. Slight sweet fragrance. \$6.25

WILD RUBY [1163] (B. BLYTH 1974) ML, 12", A royal purple self with ruby spots around velvet beards \$3.75

YO-YO [1179] (SCHREINER 1978) E, 14", Light lavender standards with small deep purple spot on falls. Lemon to lavender beards. HM \$4.00

ZERO [1183] (KEPPEL 1998) M, 13", Large ruffled white self. Faint lemon tipping on white beards. HM \$8.75

INTERMEDIATE BEARDED

Blooming after SDB starting mid May
16" to 28" stalks.

APPLEBLOSSOM PINK [1230] (J. BOUSHAY 1974) EM, 18", Full petaled light orient pink with white in center. Darker at edges & hafts with white beards. AM \$4.50

ASK ALMA [1231] (LANKOW 1980) EL, 21", Light orange with coral glow. White beards tipped tangerine orange. AM \$4.25

AZ AP [1232] (ENSMINGER 1980) EL, 18", A pretty cobalt blue. Blue beards. AM \$4.25

BEDTIME STORY [1233] (RITCHIE 1982) M, 22", Light amethyst violet standards, slightly darker midrib. Violet around beards blending to lighter amethyst. AM \$4.25

BLUE-EYED BLONDE [1194] (ENSMINGER 1989) ML, 26", Yellow self, IB with violet beards tipped blue. AM \$5.00

BLUE-EYED BLONDE [1234] (ENSMINGER 1989) ML, 26", Yellow self, with violet beards tipped blue. AM \$4.25

BLUSHES [1235] (SHOOP 1984) EM, 16", Delicious pink with pinker beards. Small flowers. Spicy fragrance. \$4.25

BOLD PRINT [1236] (GATTY 1982) M, 22" White ground plicata, stitched purple heather border. AM \$4.25

BUTTER COOKIE [1237] (GATTY 1980) M, 24", Bright yellow, yellow orange beards. \$4.25

BUTTER PECAN [1238] (HAGER 1983) M, 22", Pecan brown over yellow standards. Yellow ground falls stitched & bordered deep pecan brown. Yellow beards. \$4.75

CEE JAY [204] (LANKOW 1992) E, 24", Nicely formed round & ruffled blue & white plicata. AM \$6.00

CHEERS [1239] (HAGER 1975) EM, 18", A white self with bright red beards. HM \$4.25

CHERIE AMOUR [1240] (E.ROBERTS 1973) EM, 17", Pale pink self, coral beards. HM \$4.25

COPPER GLAZE [291] (M.HAMBLEN 1986) EL, 24", Ruffled & laced yellow with cinnamon hafts & beards. \$6.00

CUMQUAT [1246] (0) \$4.00

DANCING CLOUDS [1241] (GATTY 1981) E, 22", Lavender blue plicata & blue beards. HM \$4.25

FRUIT COCKTAIL [500] (KEPPEL 1997) M, 23", Marguerite yellow, primrose & peach blend, falls covered with yellow ochre. Red beards. HM \$5.75

GALWAY [507] (KEPPEL 1997) M, 24", Ruffled, flared pink with standards shaded purplish orchid at base. Tangerine orange beards, lavender blue at end. HM \$7.50

GOLDEN ZEBRA [544] (0) 20", I. Pallida. Golden striped foliage, mauve-purple flowers. Fragrant \$6.00

HELL CAT [1] (AITKEN 1983) M, 16", Ruffled light blue standards & deep purple black falls. AM \$4.25

HOT FUDGE [592] (HAGER 1983) M, 22", Pale yellow ground with red brown plicata markings. Yellow beards. AM \$6.00

HOT PURSUIT [1242] (A. BROWN 1975) M, 21", Tan yellow self, plum purple beards. HM \$4.25

LITTLE SWINGER [2] (M. HAMBLEN 1976) EM, 22", A luscious lightly ruffled apricot with red orange beards. \$6.00

MASKED BANDIT [741] (KEPPEL 1998) EM, 26", Heavily ruffled with blended khaki to wine berry mauve standards, flared falls of velvety dahlia purple with chrome yellow striping & spot by brownish beards. Different. HM \$8.00

PERFUME SHOP [846] (KEPPEL 1998) EM, 26", White ground plicata with rosy violet wash blue white beards. Absolutely delightful, like a mix of vanilla & root beer & old spice. \$6.75

RARE EDITION [1243] (GATTY 1980) EM, 24", White with a stitching of mulberry purple. HM \$4.25

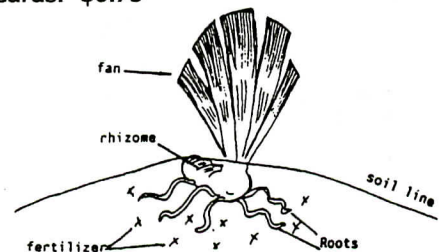
RED ZINGER [917] (BLACK 1985) ML, 26", Burgundy wine standards & deeper velvety burgundy wine falls with black cherry spot. Old gold beards. AM \$5.00

SILVER ZEBRA [1001] (0) 20", I. Pallida. Silver striped foliage, mauve-purple flowers. Fragrant. \$6.00

SUNNY HONEY [1070] (SHOOP 1985) 16", Ruffled bright orange self with red beards. HM \$6.00

TANTRUM [1244] (KEPPEL 1997) EM, 24", Flashy bicolor plicata. Ruffled light yellow standards. Falls yellow with a 1/2" oxblood border. HM \$7.25

ZING ME [1184] (BLYTH 1990) EM, 20", Creamy yellow standards, with large brown area on falls. Dark brown beards. \$6.75



DAYLILIES (HEMEROCALLIS)

Means "beautiful for a day" with many flowers on each scape. Tough plants loves the sun and partial shade.

ALICE IN WONDERLAND [33] (WILD 1969) M, 32", Wide petaled ruffled lemon yellow with a green heart. \$6.00

AMERICAN REVOLUTION [47] (WILD 1974) M, 28", Black wine red with a fine line on the edges. Velvety finish & excellent substance. Greenish yellow throat. \$6.00

APPLAUSE [61] (HALL 1958) M, 32", A velvety ruffled cardinal red with very green throat. HM \$6.75

APPLE TART [62] (HUGHES 1974) EM, 28", Ruffled dark red with a green throat. Tetraploid. \$6.00

ATLANTA MOONLIGHT [75] (PETREE 1982) M, 27", Large ruffled light yellow. \$8.00

BITE SIZE [111] (Simpson 1960) E, 20", Gold dormant in winter. \$8.75

BRAVE WORLD [142] (WILD 1969) M, 27", A very different good clear burgundy. Recurring flowers open well after cool nights & holds color all day HM \$6.00

BRIGHT CARNIVAL [147] (RUDOLPH 1980) E, 26", Bright velvety red bitone with a fine ruffled yellow pie crust edging. \$10.00

BROOKRIDGE [154] (WILD 1975) EM, 30", Blend of golden melon with very pink raised ribs going deep into a suppressed green heart. Deep coral stamens & deep pink pistil. Very rounded ruffled petals could be called hot or bright coral melon. \$8.00

BUNKER HILL [162] (WILD 1971) EM, 25", A small round bloom with overlapping petals of deep burgundy wine, a tiny tangerine heart. \$8.00

BURNING DAYLIGHT [165] (FISCHER 1962) M, 34", Excellent sunfast, deep, rich orange. Crisp, substance, broad flaring petals, ruffled edges. AM \$5.50

BUTTERSCOTCH RIPPLE [169] (BLOCHER 1976) 32", Pale cream yellow with a tan overlay resulting in the color of butterscotch. Petals edged in gold. Tetraploid \$5.50

CAPE COD [191] (WILD 1973) EM, 34", Lovely deep wine-red with small tangerine heart touched green. Deeply ruffled overlapping petals. HM \$6.00

CATHERINE WOODBERY [202] (CHILDS 1967) M, 30", Classic orchid pink self with green throat. AM \$12.00

CHICAGO GOLD COAST [220] (MARSH 1976) M, 24", A very deep gold with heavy crimped picrust edging, better weather resistance than most gold. Tetraploid. \$6.00

CHICAGO PEACH [221] (MARSH 1975) M, 26", Peach pink self with a creped finish. Tetraploid. \$7.50

CHICAGO SILVER [222] (MARSH 1976) M, 30", Ruffled purple with all segments edged white. Tetraploid. HM \$7.75

CHRISTMAS CAROL [234] (WILD 1971) EM, 30", Bright red, yellow throat \$6.00

CIMARRON PASS [238] (WILD 1975) EM, 34", Deep apricot with rose brushing, is deeper above medium yellow throat touched green. Wide ruffled overlapping petals. \$6.00

CINNAMON ROLL [242] (ROBERTS 1976) M, 30", A bright butter yellow with edges dusted & brushed in cinnamon-red. Tetraploid. \$6.50

CLOSE UP [259] (WILD 1975) EM, 30", Deeply ruffled broad overlapping petals of pale lemon brushed rose, heavier brushing on sepals. Clean lemon heart touched green. \$7.00

COMMANDMENT [279] (MISSION GARDENS 1969) M, 30", A rich deep buff apricot to tangerine orange with a glowing heart. Segments are broad & overlapping. AM T \$5.00

COUNTESS CARROTS [301] (HUDSON 1979) 15", Miniature cone shaped orange flowers with lime throat. \$6.75

CROWN ROYAL [320] (MOLDOVAN 1976) E, 28", Royal purple flowers edged white. \$8.00

DANCING SHIVA [330] (MOLDOVAN 0) E, 22", Medium pink blend with 5" flowers. \$8.75

DATE BOOK [343] (WILD 1972) M, 40", Large baby ribbon pink with glowing heart. A lovely pink with blue in it. \$8.75

DEAR DAD [353] (WILD 1970) M, 26", Light azalea pink deepening in the ruffles. Tangerine heart, recurved segments. \$8.75

DEWY ROQUEMORE [368] (WARNER 1973) M, 26", Ruffled deep velvet red, green heart. Holds well in heat. Good bud count. HM \$6.00

DISRAELI [371] (MOLDOVAN 1976) E, 26", Ruffled burgundy rose with yellow throat. \$7.75

DOLL HOUSE [376] (WILD 1980) EM, 27", Ruffled yellowish pink to orange with raised pinkish lavender ribs, glowing hearts. \$6.00

DOUBLE CARAMEL [380] (CHILDS 1976) M, 24", A double light caramel with red eyezone. \$8.00

DOUBLE DREAM [381] (B.BROWN 1978) M, 22", Very smooth double peach diploid with overlapping ruffled petals & darker hearts. \$8.00

EENIE WEENIE [406] (ADEN 1976) EM, 10", Miniature yellow self. \$6.00

EARLY ORDER BONUS (E.O.B.)

15% Discount on Orders over \$50.00

If received before May 1st, 2003

EMERALD JOY [417] (HALL 1970) M, 27", Very attractive chartreuse with cinnamon or deep rose brown brushing over ruffled petals. Green heart spilling out onto segments. Lily of the Valley fragrance. \$8.00

ENDLESS GLAMOUR [424] (LYCETT 1995) 21", Ruffled cream with pink eye zone. \$12.75

ERIN PRAIRIE [428] (FAY 1971) EM, 27", Beautiful green golden yellow self with grass green throat. HM \$8.00

ETCHED IN GOLD [430] (PECK 1971) EM, 20", Ruffled 5" flowers. Pinkish yellow with gold edges. \$6.75

ETHIOPIA [432] (MUNSON 1976) EM, 30", A vigorous large rich purple. Ruffled & crimped greenish yellow throat. HM \$7.50

ETTA JUNE IRWIN [429] (LYCETT 1995) M, 30", Lovely 5" lavender self with a puckered texture, fine wire gold edge and diamond dusted. Semi-evergreen. \$12.00

EXALTED RULER [436] (McEWEN 1965) , 32", Huge, ruffled creamy coral-pink with deep rose throat. Strong smooth color deepening at edge of the segments. \$8.00

FLAVA [474] () 29", Lemon yellow lily. Very fragrant. \$5.75

FOLKLORE [480] (WILD 1968) ML, 24", Large ruffled crimped pink apricot that mellows orchid pink. Apricot throat & green deep in heart. \$8.00

GALA FINALE [504] (PRIDE 1977) ML, 38", Tall huge golden yellow flowers. \$8.25

GRANDFATHER TIME [552] (WILD 1968) M, 40", An enormous, very clear brick red with antique gold throats. Slightly recurved sepals, excellent substance. HM \$6.50

GRAPE VELVET [554] (WILD 1978) M, 24", Grape purple self. \$7.75

GREEN GLADE [556] (PECK 1973) M, 30", Ruffled pale coral pink, green throat. Tetraploid. \$8.00

GUITAR STREET [560] (WILD 1978) EM, 35", Very smooth bright dark red with a tiny yellow heart. Ruffled & crimped, excellent substance & velvety finish. \$6.75

HEAP GOOD [573] (WILD 1971) M, 30", Pure gold self, touch of green deep in heart. Ruffled petals recurve & twirl at tips. Heavy diamond dusting. \$6.00

HONEYMOON SUITE [587] (LORRAINE-LYCETT 1995) ML, 25", Beautiful, round, ruffled, bright canary yellow flower with a green throat. Strong grower & high bud count. \$9.75

HORTENSIA [591] (BRANCH 1964) M, 34", Wax-like medium yellow blooms with 3/4" ruffled, crimped border & a green yellow center. All segments recurve. AM \$6.25

HOT TODY [595] (HALL 1971) M, 34", Honey colored rose with golden eyezone, green deep in heart. Round ruffled petals. \$6.75

JOHNNY BARBOUR [634] (PECK 1974) ML, 21, A brilliant no throat red. Excellent tetraploid. HM \$6.00

KNAVE [657] (MUNSON 1972) M, 26", A deep rose wine precisely patterned cream throat. Tetraploid. HM \$8.00

LOVE THAT PINK [713] (HALL 1963) EM, 27", Beautiful smooth light pink with fluted edges, wide petals. A yellow throat. AM \$6.75

MARISKA [734] (MOLDOVAN 1995) M, 28", Large & lovely 6" creamy blue pink blend blooms. Well branched. \$10.00

MATEUS [744] (WILD 1979) EM, 30", Excellent rose wine. Slightly paler midrib, gold heart. Ruffled petals, recurved sepals. \$6.00

MATT [743] (HARRIS 1982) EM, 24", Round ruffled, light yellow with rose halo. \$10.00

MEXICAN WAY [754] (MISSION GARDENS 1970) ML, 30", Strong pinkish orange blend overlaid gold with deeper heart, heavily bubbled. \$8.00

MINSTREL BOY [770] (WILD 1974) M, 25", Ruffled velvety deep wine with blue in it with medium yellow heart touched green. Uprturned edges, recurve. \$5.50

MOONLIGHT GAMBLER [776] (LORRAINE-LYCETT 1990) M, 37", Lovely tall ruffled, very pale yellow with green throat. \$8.50

MOUNTAIN VIOLET [780] (MUNSON 1974) M, 28", Very pretty rich violet, deeper halo, yellow green throat. HM \$6.75

MY WORLD [786] (WILD 1973) EM, 28", Very creped pastel peach, suppressed heart touched green. Slight orchid touch on raised ribs. Deeply ruffled. Excellent. \$6.75

ORANGE PRELUDE [815] () 30", Bright deep orange. HM \$10.00

ORANGE SLICE [816] (ROBERTS 1975) M, 30", Bright orange with dark yellow midribs & edges. Excellent long season. \$5.00

PERSIAN JEWEL [847] (GREISBACH 1973) M, 24", Very spectacular full deep rose purple, purple eyezone. \$8.00

PINK EMBERS [857] (WILD 1978) M, 30", Light to moderate yellowish pink with glowing tangerine heart. Very ruffled & crimped bloom. \$8.00

PONCHITA [877] (HALL 1970) M, 30", Lovely strong peach pink. Large eyezone, above a suppressed yellow heart. \$5.50

PRAIRIE BLUE EYES [878] (MARSH 1970) M, 28", Ruffled rose purple with silver tan band. Yellow throat. AM \$8.00

PRESTOR JOHN [882] (ALLGOOD 1972) EM, 26",
A fragrant double orange gold self. \$8.00

PURPLE MAGIC [894] (WILD 1974) EM, 34", A
very attractive light purple. Large light
lemonheart bordered deep purple, split by larger
lighter midrib. \$5.50

RADIANT GREETINGS [897] (WILD 1977) M, 38",
An attractive orange yellow with a wide red halo
above a greenish yellow heart. \$6.00

RASPBERRY PIXIE [904] (WILLIAMSON 1971) M,
12", Miniature - a 1 1/2" flower of a deep
raspberry blend. \$7.50

RASPBERRY WINE [905] (WILD 1980) ML, 20",
Ruffled, creped & velvety raspberry red. Deeper
colored halo above small gold hearts. Segments
foldback making flower almost round. Excellent
substance. \$8.00

RED FOUNTAIN [911] (WILD 1978) L, 26", A
bright rose red with medium sized gold heart
touched green. Velvety & ruffled with all
segments recurved. \$6.00

ROCKET CITY [935] (HARDY 1968) EM, 36",
Excellent bright bittersweet orange, burnt orange
eyezone. HM \$5.50

SEA GOLD [972] (HALL 1964) EM, 24", A ruffled
amber peach blend mellowing to amber peach
pink by evening. Heavy substance, good
branching. AM \$5.00

SHADYSIDE [979] (LAMBERT 1969) EM, 35", A
good red purple self, an apricot throat. \$5.00

SILOAM PEE WEE [990] (HENRY 1982) EM, 18",
Small flowers of creamy apricot blend with
purple. \$9.75

SILOAM PINK PETIT [991] (HENRY 1975) M, 22",
Small 3" pink flowers with deeper eyezone.
\$9.75

STELLA DE ORA [1049] (JABLONSKI 1986) EM,
11", Tiny, bright yellow gold self with very small
green throats. Blooms early. AM \$6.00

SUMMER INTERLUDE [1063] (HALL 1957) ML,
38", Sunfast, velvety ox-blood red with a yellow
green heart. AM \$6.00

TAMMAS [1086] (1972) Wide raspberry purple, a
green yellow throat. Best in partial shade. \$6.75

TANG TALISMAN [1087] (0) M, 22", Sunny
orange blooms with a deeper orange edging
verging to a deep peach center rib. Almost orchid-
like in form. Lightly scented. \$12.00

THAI BALLETT [1093] (1974) M, 28", Vibrant
magenta rose-orchid. Edged purple, green throat.
\$8.75

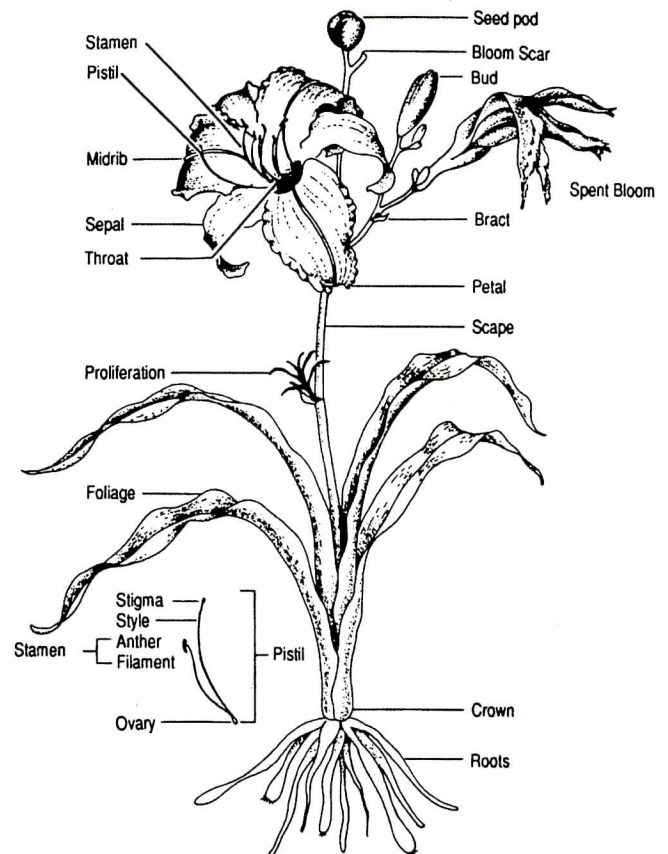
VERA BIAGLOW [1142] (MOLDOVAN 1984) M,
30", 6" Ruffled rose pink flowers edged in silver
with lemon green throat. \$10.00

WHITE TEMPTATION [1158] (SELLERS 1978) M,
32", Near white self with green throat. \$10.00

DAYLILIES (HEMEROCALLIS)

WINNING WAYS [1167] (1966) EM, 34", An
unusual, beautiful greenish yellow with a small
green heart. The ruffled petals are wide &
overlapping. AM \$10.00

ZAMBIA [1181] (MOLDOVAN 1976) M, 30",
Exceptional black-red blend, a star shaped green
throat. \$6.75



PARTS OF A DAYLILY

WATER IRIS

Water Iris grow best in boggy conditions,
shallow water of can be potted and grown
in ponds. They can be grown under normal
conditions, but do not do as well.

DOUBLE PSEUDACORUS ML, 45"

Double-flowered pseudacorus. Bright
golden yellow. Large vigorous plants. \$4.50

PSEUDACORUS EL, 40"

A huge plant, wide tall leaves, strong branched
Stems with 3" wide, yellow flowers. \$3.50

WATER IRIS

PLEASE READ BEFORE ORDERING

TERMS - Cash, cheque or money order to accompany your order. Payable to: **McMillen's Iris Garden**.

SHIPPING - Ontario orders cost. \$8.00 for regular shipping and handling. All other Provinces is \$9.00.

EXPRESS POST - Ontario orders cost \$12.00. All other Provinces cost \$15.00.

We will still continue to use a major carrier, it will be used wherever possible that the shipping costs cover in all Provinces and all other orders will be sent by regular mail.

Carrier is fast and can be traced to know when it should be delivered.

Please include complete address, street or road name, lot & concession with 911 number.

Phone number is necessary with your mailing order. If you live in the country a Map is helpful.

Carrier can not be used to General Delivery or Post Office numbers, these orders will be mailed.

Shipping of Bearded Iris will be early August to mid September. Orders must be post marked before September 1st. Daylilies will be shipped in September.

Orders will be shipped first come first served as they are received. Order received in August might be even sent in September, depending on our time and weather. Please order early. If you are going on vacation, during our shipping season let us know when you order and we will ship accordingly.

U.S.A. ORDERS - Minimum order of \$30.00. Shipping is \$8.00 for regular mail.

If you would like AIR MAIL, please include an additional \$.50 per rhizome.

An inspection is required by the Department of Agriculture to ship across the border.

Phytosanitary Certificate is \$12.00.

Because of the exchange difference take the total of your order and divide it by 1.40 to get what is owing in U.S. Dollars.

PICK-UP ORDERS - Orders can be picked up on Tuesday or Thursday from 10 - 5 p.m. or Saturday morning from 9-12 p.m. We are CLOSED on Saturday afternoon & Sunday.

Iris orders may be picked up between Aug. 12th to Sept 6th or be shipped

Daylilies order may be picked up Sept. 2, 4 & 6th or Sept. 13, 16 & 18th or be shipped.

GARDEN CENTRES, NURSERIES and WHOLESALERS -

Call for our Wholesale List - 519-468-6508. Price list will be sent in April.

Most newer iris are not available in volume and will be at catalog prices.

Shipping is extra and will be calculated according to size of order.

Extra iris do not apply to wholesale orders.

GUARANTEE - We guarantee all plants to be true to name, healthy and disease free when received

If you are not satisfied please notify us as soon as possible about the problem and we will be more than happy to correct it. Rhizomes vary in size, small plants are just as healthy, multiply and bloom same as larger rhizomes.

ACKNOWLEDGEMENTS - If you wish to receive an order acknowledgement please send a self addressed stamped envelope

CATALOGS - Orders over \$25.00 will receive a catalog the following years

If you are not on our mailing list send \$2.00 with you name and address to receive next years catalog. Catalogs are sent out from March to September; while supply lasts.

GIFT CERTIFICATES from McMillen's Iris Garden

This is a great way to share the beauty of Iris & Daylilies with you family and friends.

Available in any amount over \$25.00. Send us your cheque or money order and the recipients name and address and we will look after the rest.

SPECIAL SELECTION from McMillen's Iris Garden

Beginner's offer. The following are selected Iris that are vigorous, hardy and easy to grow plants.

These will be our choice at great savings.

OFFER 1 • 2003----- 8 Iris @ \$35.00 + taxes and shipping

OFFER 2 • 2003----- 16 Iris @ \$60.00 + taxes and shipping

McMillen's Iris Garden
 R.R. #1 NORWICH, ONTARIO
 NOJ 1P0 (519)468-6508

OFFICE USE ONLY

R
C

F
S

PLEASE PRINT

NAME: _____

ADDRESS: _____

TOWN: _____ PROV.: _____

POSTAL CODE: _____ PHONE#: () _____

PICK UP AMOUNT

DATE: _____ ENCLOSED \$ _____

May we **Substitute** for varieties **sold out**. Yes ___ No ___

Have you **ordered** in the last **three** years. Yes ___ No ___

GST # 122147960

McMillen's Iris Garden
 R.R. #1 NORWICH, ONTARIO
 NOJ 1P0 (519)468-6508

OFFICE USE ONLY

R
C

F
S

PLEASE PRINT

NAME: _____

ADDRESS: _____

TOWN: _____ PROV.: _____

POSTAL CODE: _____ PHONE#: () _____

PICK UP AMOUNT

DATE: _____ ENCLOSED \$ _____

May we **Substitute** for varieties **sold out**. Yes ___ No ___

Have you **ordered** in the last **three** years. Yes ___ No ___

GST # 122147960

Quantity	STK#	NAME OF VARIETY	PRICE
1			
2			
3			
4			
5			
6			
7			
8			
9			
10			
11			
12			
13			
14			
15			
16			
17			
18			
19			
20			
21			
22			
23			
24			
25			
26			

Quantity	STK#	NAME OF VARIETY	PRICE
1			
2			
3			
4			
5			
6			
7			
8			
9			
10			
11			
12			
13			
14			
15			
16			
17			
18			
19			
20			
21			
22			
23			
24			
25			
26			

TOTAL balance of above	
Balance from reverse	
SHIPPING Ont. \$8.00 others Prov. \$9.00	
TOTAL Plants & shipping	
7% GST on above total	
8% PST or HST on above total	
TOTAL AMOUNT OWING	

TOTAL balance of above	
Balance from reverse	
SHIPPING Ont. \$8.00 others Prov. \$9.00	
TOTAL Plants & shipping	
7% GST on above total	
8% PST or HST on above total	
TOTAL AMOUNT OWING	

Quantity	STK#	NAME OF VARIETY	PRICE	Quantity	STK#	NAME OF VARIETY	PRICE
27				27			
28				28			
29				29			
30				30			
32				32			
33				33			
34				34			
35				35			
36				36			
37				37			
38				38			
39				39			
40				40			
41				41			
42				42			
43				43			
44				44			
45				45			
46				46			
47				47			
48				48			
49				49			
50				50			
51				51			
52				52			
53				53			
54				54			
55				55			
56				56			
57				57			
58				58			
59				59			
60				60			
61				61			
62				62			
63				63			
64				64			
65				65			
66				66			
67				67			
68				68			
69				69			
70				70			
		SUB TOTAL				SUB TOTAL	

CULTURAL INSTRUCTIONS FOR BEARDED IRIS

PLANTING TIME – Mid July through mid September. Earlier and later are possible, but earlier will reduce the following years bloom and later will lower the chance of winter survival. Replant every 3-5 years depending on variety, dig up the clump and discard the old center rhizomes. Trim foliage of large fans to about 6” and replant. Plant in a well prepared, clean, sunny location, well drained, using a fertilizer containing low nitrogen. If manure is used it must be completely rotted and worked in well ahead of time. Wood ash is beneficial being very high in many trace elements. Plant level with ground surface in clay, about 2” deep in sand. Cultivate shallow, iris are shallow rooted. Water only when planted. No water is needed after this, unless it’s extremely dry. Occasionally remove dead and badly spotted leaves from outside of the fans. Do not cut foliage back after blooming. Remove bloom stalks with a quick snap. Foliage may be cut back to 6 - 7” from the ground in late fall. A cover of wheat straw or evergreen boughs is beneficial in winter to prevent heaving. Cover must be removed in spring. Do not cover with leaves, they hold too much moisture and cause rot.

INSECT AND DISEASE CONTROL – Number ONE rule – remove and burn all dead material from around the iris in the spring. Borer eggs and fungus pores of leaf spot are on these and must be destroyed.

IRIS BORER – can be controlled with the use of Cygon 2E, available at you local garden centre. In the spring after you have cleaned up any dead foliage and debris from around your Iris clumps, you are ready to spray. Following the instructions on the label you should make at least 2 applications, starting approximately the first week of May depending on the season. If you have had a problem with borer in previous years then a third application can be made. Applications should be made 7 – 10 days apart.

BACTERIAL SOFT ROT – a soft mushy rot with a very strong smell. This is caused by too lush a growth, too rich a soil, too much water, failure to clean dead leaves in the spring or injury to rhizome allowing the bacteria a place to become established. Agricultural gypsum sprinkled on infected plants is beneficial. Dig and scrape rot from rhizome and air dry for several days. Dust with sulfur or gypsum and replant.

CULTURAL INSTRUCTIONS FOR DAYLILIES

Daylilies are tough and grow well in almost any soil, that are not consistently soggy or swampy. They grow in sand, heavy clay, alkaline or acid soils, as long as they are amended with extra organic matter. Daylilies love full sun and will tolerate up to half a day of shade. They will benefit from an application of well balanced garden fertilizer one or two times a year.

DAYLILIES are shipped in September. Plants will be dry and bare rooted to avoid molding or rotting enroute. Plant as soon as possible after receiving them and water. Plant from 12” to 24” apart, allow the soil to cover the top of the roots by one-half inch.

Daylilies must be ordered on a separate order form.

DEFINITIONS of IRIS

AMONEA- - - - - White or near white standards with color falls.

BICOLOR- - - - - Two colors, light or medium standards with contrasting falls.

BITONE - - - - - Two tones of the same color.

BLEND - - - - - A combination of two different colors.

PLICATA - - - - - Stitched or stippled margin of color on a lighter colored background.

SELF - - - - - Standards & falls are same color.

SPACE AGE or HORNED IRIS – Beards are uplifted & typically end in points.

VARIEGATA - - - - Yellow or near yellow standards with red or brown falls.

VEINS - - - - - Lines of contrasting or darker colors.

FALLS - - - - - Lower petals of the flower.

STANDARDS - - - - Upper petals of the flower.

HAFTS - - - - - Also known as shoulders; top part of falls.

SPECIAL SELECTION from McMillen’s Iris Garden

Beginner’s offer. The following are selected Iris that are vigorous, hardy and easy to grow plants.

These will be our choice at great savings.

OFFER 1 • 2003----- 8 Iris @ \$35.00 + taxes and shipping

OFFER 2 • 2003----- 16 Iris @ \$60.00 + taxes and shipping

4th Annual BEEF BBQ @ McMillen’s Iris Garden

Date: June 7, 2003

Start Time: 5 PM to 7 PM

Tickets: \$12.00 Adults, \$6.00 Children (under 12)

Call to reserve your tickets by May 30, 2003



AROUND MIDNIGHT



**CROWN ROYAL
DAYLILY**



CLARENCE



CARIBBEAN DREAM



**MATT
DAYLILY**



FROSTING



BOOGIE WOOGIE



**ENDLESS GLAMOUR
DAYLILY**



JAZZED UP



CITY LIGHTS



**CHRISTMAS CAROL
DAYLILY**



GYRO

