

THE REBLOOMING IRIS RECORDER

Winter 2007

~ Journal of the Reblooming Iris Society ~

Volume 70



Daughter Of Stars (D. Spoon 2001) ♦ 2007 John C. Wister Medal



Mountain Sunrise TB (*M. Sutton '07*)
See pages 23 & 24



Mother Earth TB (*B. Hager '88*) See pages 24 & 26



Anxious TB (*B. Hager '92*)
See pages 10 & 26



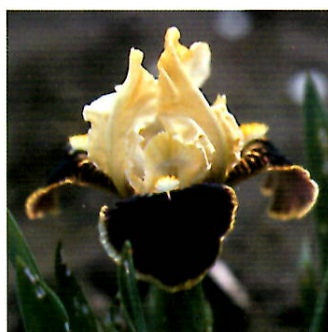
Fast Forward IB (*T. Aitken '02*)
See pages 25 & 27



Holidayze IB (*G. Sutton '02*)
See page 26



Giddyup To Go TB (*T. Burseen '05*)
See page 9



Chelsea Fair SDB (*W & A Godfrey '99*) See page 7

Photo Credits, Inside Front Cover:

Mountain Sunrise, *M. Sutton*

Mother Earth, *T. Aitken*

Fast Forward, *T. Aitken*

Holidayze, *T. Aitken*

Chelsea Fair, *D. Silverberg*

Giddyup To Go, *C. Buchheim*

Anxious, *C. Buchheim*

REBLOOMING IRIS SOCIETY

OFFICERS

President

Barbara Aitken
608 NW 119th St., Vancouver, WA 98685
aitken@flowerfantasy.net
(360) 573-4472

Vice President

Claire Honkanen
P.O. Box 24, Signal Mountain, TN 37377
claire235@aol.com
(423) 886-0433

Secretary

Joanne Prass-Jones
35572 Linda Dr., Fremont, CA 94536
joanne@usjoneses.com

Treasurer

Margaret Sutton
16592 Road 208, Porterville, CA 93257
margaret@suttoniris.com
(888) 558-5107

APPOINTED BOARD MEMBERS/CHAIRPERSONS

Publicity Director

Shirley Trio
2701 Fine Ave., Modesto, CA 95355
rprobst02@earthlink.net
(209) 551-6323

Membership

Charlie Brown
3114 South FM 131, Denison, TX 75020-0724
broiris@cableone.net
(903) 463-4084

Editor

Carole Buchheim
27876 Vista Road, Romoland, CA 92585-9110
cbuchheim@verizon.net
(951) 928-2337

Slide Program Chairpersons

Margaret & George Sutton
16592 Road 208, Porterville, CA 93257
margaret@suttoniris.com
(888) 558-5107

OTHER CHAIRPERSONS

Immediate Past President

Clarence Mahan
7311 Churchill Rd., McLean, VA 22101
cemahan@aol.com
(703) 893-8526

Webmaster

Nancy Price
32009 S. Ona Way, Molalla, OR 97038
flags@molalla.net
(503) 829-2928

REGIONAL DIRECTORS

Northwestern

David Silverberg
32009 Ona Way, Molalla, OR 97038
sil1812@molalla.net
(503) 829-2928

Northeastern

Sandy Ives
1077 Guertin Ave., Ottawa, Ontario
Canada K1 H8 B3
rives@rogers.com
(631) 521-4597

Southwestern

George Sutton
16592 Road 208, Porterville, CA 93257
info@suttoniris.com
1 (888) 558-5107

Southern

Charlie Brown
3114 South FM 131, Denison, TX 75020-0724
broiris@cableone.net
(903) 463-4084

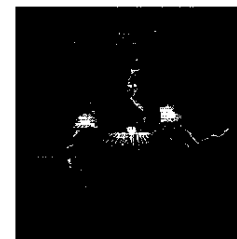
Eastern

Joan Roberts
342 Schwartz Rd., Gettysburg, PA 17325
joan@cvn.net
(717) 338-1657

Midwestern

Tim Stanek
23329 Ellington Ave., Glenwood, IA 51534
tjstanek@aol.com
(712) 527-5338

Cover Photo:



Daughter Of Stars
2007 John C. Wister Medal
(Spoon, D. 2001)
TB 35" EM & RE
Clarence X Mind Reader

*Photo Credits, front cover
and page 1:*
Daughter Of Stars,
P. Buchheim

The Reblooming Iris Recorder is Published Biannually in Spring and Fall/Winter
Deadlines for Receipt of Material are:

Spring Issue: March 1

Fall/Winter Issue: November 1

Please Note: Returned copies of the Recorder will be remailed at an additional charge.
Please make sure your address is up to date.

TABLE OF CONTENTS

RIS Business

President's Message	Barbara Aitken	3
Nominating Committee Report.....	Clarence Mahan	3
Board Meeting Minutes	Ken Roberts	4
General Meeting Minutes	Ken Roberts	5
New Checklist of Reblooming Irises Update		5
Editor's Message.....	Carole Buchheim	6
Request For Slides and Digital Images.....		9
Record of Iris Rebloom Form.....		13
RIS Symposium Form		15
2008 AIS National Convention Austin, Texas Invitation		16
Request For Speakers		27
Membership Information		28
Advertising Rates		28
Reblooming Iris Resource List		28

Articles

Area Director's Reports

Northwestern	Dave Silverberg	7
Northeastern.....	Sandy Ives	7
Midwestern	Tim Stanek	8
Southern.....	Charlie Brown	9
Eastern	Joan Roberts	10
Southwestern	George Sutton	11
San Diego Fall Meeting: Remarkable Rebloomers	Carole Buchheim	12
2007 Rebloom Report, Washington State, Zone 8	Terry Aitken	17
Growing Reblooming Tall Bearded Irises in Southern California.	Richard C. Richards	18
I Believe	Betty Wilkerson	20
Notes on 'Rosalie Figge'.....	Clarence Mahan	21
Multiple Reblooming Irises	Ginny Spoon	22
2007 Rebloom Parent Report	George Sutton	24
Rebloom Report, Escondido, CA	Alex Stanton	25
Rebloom Report, Porterville, CA	George Sutton	26
Rebloom Report, Indiana	Mary Swann-Young	27



Barbara Aitken

President's Message *By Barbara Aitken*

We feel fortunate in the Northwest that we have not gone through the drought conditions experienced by so much of the country this summer or the raging fires that have claimed so many homes in southern California this fall.

At this writing, we seem to have gone from a cooler than usual summer into our fall rainy period earlier than expected. There was even a dusting of snow on the rooftops as we drove over the mountain pass to our fall Region meeting in eastern Washington in early October and the trees were wearing their fall colors of red, orange, and bright yellow. Since we have not yet had a hard frost, rebloom continues in the garden at a more moderate pace as the weather cools. We had good rebloom on all the bearded iris classifications, as well as extended bloom until late June on the Siberians following their first flush of bloom in May.

I hope many of you have completed your rebloom reports and sent them to your area directors. The address for each area director is on page one. Regions within each director's jurisdiction are listed along with their articles. Your rebloom information is very important as it provides the data necessary to update rebloom records for the Reblooming Iris Checklist, which is due to be published spring of 2008.

Also included with the Spring issue of the Rebloom Recorder was a Symposium report

for you to list your favorite reblooming irises in the different categories. This report should be returned to George Sutton at the address given, as soon as possible, so we can make note of the results in the next Recorder.

I am delighted to report that we have a new editor for the Reblooming Iris Recorder. She is Carole Buchheim from southern California. Carole is currently the editor for her club newsletter as well as the Region 15 newsletter. She has a graphic arts background and we are delighted to welcome her as our RIS editor with this issue.

At the same time, I wish to thank outgoing editor Robin Shadlow for a job well done. During her tenure we changed printers which resulted in a higher quality of color pictures for all members to enjoy.

Our membership in the Reblooming Iris Society has decreased a little in the past few years, which seems to be the trend in many horticultural organizations. So, as our work in the garden winds down for the season and we turn to indoor tasks, it is a good idea to think what you can do to help increase membership in the RIS. Invite a friend to an iris meeting; give a gift membership to RIS. Offer to write an article for our new editor or give a program on reblooming irises at your local club or Region. Opportunities abound!

Have a pleasant upcoming holiday season as you pour over iris catalogs and look forward to new growth in the iris garden next spring.

Aitken's Salmon Creek Garden
Vancouver, Washington
USDA Zone 8

Photo Credits page 3:
Barbara Aitken, T. Aitken

Nominating Committee Report *By Clarence Mahan*

We hereby submit the following nominations for election at the general meeting of the Reblooming Iris Society in 2008:

President Sterling Innerst
Vice President Jim Hedgecock
Secretary Dana Brown

Treasurer Rita Gormley
Midwestern Director Tim Stanek

Respectfully submitted this 23rd day of October, 2007 by:

Clarence Mahan, Chairman
Joan Roberts, and Margaret Sutton



Ken Roberts

Board Meeting Minutes *By Ken Roberts, Secretary pro tem*

The RIS board meeting was called to order at 9:02 a.m., May 1, 2007, by Barbara Aitken, President. Directors in attendance

were Charlie Brown, Joan Roberts, and Dave Silverberg.

BUDGET DISCUSSION:

A quorum was not established due to the absence of some officers and directors.

The budget was presented. Expenses were slightly misleading due to the one-time cost of printing the new RIS *Invitation to Join* brochures and the conversion of the membership program from DOS to Access. These were 2006 authorized expenses which were paid out of the 2007 budget.

In spite of the higher printing cost of the Recorder, Charlie Brown recommended keeping the Membership dues at the same level for another year. Any dues changes would need to be recommended by the board and presented to the membership for approval.

RIS *Invitation to Join* brochures are now being included with the welcome packet sent to all new AIS members.

Charlie reported that Recorder advertising costs are still \$50.00 for a full page, but revenue has dropped due to reduced advertising. He questioned the value of raising the advertising rate verses soliciting ads from more hybridizers.

OTHER BUSINESS:

Checklist: The Checklist has not been published since the one Ken Roberts edited in 1998. The goal is to have the new edition available in a searchable database, as well as print media, when the new one is published. Its publication date is still uncertain, but it should be available in early 2008.

Symposium: Response to the symposium has not been encouraging. We need a different format or better promotion.

Reblooming Reports: Since very few Reblooming reports have been submitted, Nyla Hughes suggested that we e-mail a blank Reblooming Report to members so that they can fill it in and send it to their Regional Direc-

tor who will then tabulate the results and send them to the Checklist Editor and the Editor of the Recorder. Charlie suggested that we have a way for the members to send their Reblooming Report via the web site.

Membership: Like many other plant societies, the AIS and its other sections, membership in RIS has dropped over the years to a current membership of about 425. This averages out to a drop of about 25-30 members annually. Memberships currently renew at the beginning of each year, so there is usually a drop in membership from non-renewals at that time. However there is usually an influx of new members at the annual AIS conventions.

Barbara noted that we need increased effort to attract more members. The Median Iris Society is the only Section that currently has a level membership. The AIS is receiving some three-year RIS renewals sent in with AIS renewal memberships but recommends that more emphasis be made at the local level. Local activity is the key to membership retention. Offering a free iris to new three-year members could also be tried. It was also pointed out that RIS is the only Society that does not hold a separate convention.

Shirley Trio suggested placing ads offering a free Bulletin in other Garden Society magazines to attract new members. An article in Southern Living in 1988 generated 100 new members. Membership promotion has also been successful at local garden shows.

Directors: Two Directors will be voted on in the General Membership Meeting.

Editor: Robin Shadlow asked for a replacement or a strong assistant to help with her duties as Editor of the Recorder. Again, Charlie suggested sending reports and articles via E-mail. It was noted that most articles have been submitted during the winter.

Photos: Margaret and George Sutton, Slide Program Chairpersons, would like more photos of reblooming irises to be sent to them. They have offered to create digital images that could be used for a PowerPoint type presentation and put on a CD for use as a much needed RIS fund raiser.

General Meeting Minutes *By Ken Roberts, Secretary pro tem*

AIS National Convention
Oklahoma City, OK

The RIS general meeting was opened on May 2, 2007 by President Barbara Aitken who reviewed the Board Meeting discussions. She reminded members that there was not a quorum, so no formal board action was taken. There will be an e-mail vote of the Board at a later date on any items requiring board action.

The Operating Budget was discussed, pointing out that there was a slight negative cash flow which should right itself in 2008.

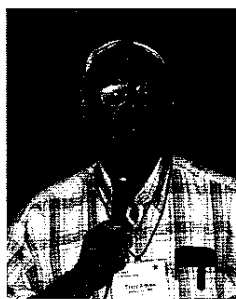


Charlie Brown at RIS Table

The Checklist is being updated and should be available in the spring of 2008. Price will be determined by the size (number of pages) of the checklist, but could be similar to the \$18.00 charged for the Median Iris Checklist which came out in 2006. It may also be available on CD.

Record of Iris Rebloom reports, printed in the *Recorder*, are to be sent to the Area Directors. To date very few have been turned in. Information from these reports is critical to providing accurate data for revised editions of the Checklist, so members are encouraged to return these as soon as possible.

The last two issues of the *Recorder* also had Symposium forms to be filled out and sent to George Sutton. Unfortunately, very few of these have been returned either. This Symposium is a report of the member's favorite reblooming irises in all of the different categories; basically a "popularity contest".



Terry Aitken

Articles and reports for the *Recorder* should be sent to the Editor well in advance of publication.

Membership is down a little over the last several years. Current dues are \$7.00 for single annual and \$8.00 for dual annual membership; \$18.00 for single triennial and \$21.00 for dual triennial membership. Newer iris introductions donated by hybridizers will be donated for any new or renewal three year memberships taken out during the meeting.

It was moved and seconded that the Director nominees submitted by the Nominating Committee be accepted. These were Joan Roberts as Eastern Director and Sandy Ives as Northeastern Director. Motion approved.

Robin Shadlow has requested replacement for her position as Editor of the *Recorder*. Carole Buchheim, Editor of the Region 15 Newsletter, has agreed to take this position.

Following the general meeting Terry Aitken gave a slide presentation showing "Reblooming Irises Through the Season", from MDBs through Japanese. He showed slides of irises from dozens of hybridizers. He pointed out that orange is recessive and cool soil extends the bloom season for him, particularly for the beardless irises.



Convention attendees at the RIS Section Meeting



Robin Shadlow, outgoing RIS Editor, and Carole Buchheim, incoming RIS Editor.

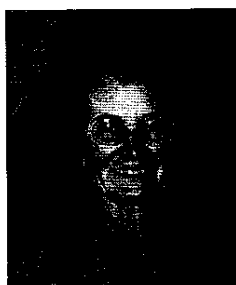
Photo Credits page 4:
Ken Roberts, A. Stanton

Photo Credits page 5:
Attendees, A. Stanton
Robin and Carole, A. Stanton
Terry Aitken, C. Buchheim
Charlie Brown, C. Buchheim

New Checklist of Reblooming Irises

Culminating several years of work by Linda Mann, Betty Wilkerson, Robin Shadlow, and the late Rosalie Figge, a new *Checklist of Reblooming Irises* will be available in the spring of 2008. Watch for further information on price and ordering in the Spring issue of the *Reblooming Iris Recorder*!

Mystic Lake Gardens
22177 Polley Street
Nuevo, CA 92567
cbuchheim@verizon.net
USDA Zone 9



Carole Buchheim

Editor's Message *By Carole Buchheim*

My husband keeps reminding me that my cup is already filled to the brim and overflowing with iris responsibilities and here I am accepting the editorship of the *Reblooming Iris Recorder*. When Barbara Aitken asked me if I would consider being editor, I said yes because I have a vested interest in remontant irises.

My love affair with iris began in the late

1980's when I was doing a little shopping at the Magnolia Center Mall in downtown Riverside, CA. I walked out of a department store right into the Inland Iris Society's spring show. Sunlight danced on fabulous iris blossoms and their dazzling beauty captured my heart. It was

LOVE at first sight!

I gladly paid the membership fee and attended the very next meeting. It's amazing how one event can make such an impact on a person's life. Now, some 20 years down the line, I am involved editorially on the local, regional, and national level. My husband, Paul, and I own Mystic Lake Gardens, a new commercial iris garden, and we are both hybridizing. Our maiden bloom was this last winter and spring.

Richard Richards calls southern California the 'reblooming iris capital of the world'. With our Pacific Coast weather patterns (Zone 9) we have opportunity for year-round iris bloom and rebloom. Currently we have between 75 and 85 bearded iris cultivars in bloom, mostly TBs, as well as an additional 70 TB seedlings in full color regalia.

In this RIR issue you will see a number of changes. In addition to design changes you will see a lot more pictures. Author and director photos are included to give the RIR a more friendly, personal touch. If you see these people at regional events or national conventions, introduce yourself and get acquainted.

You will find a new section with area director reports. I am hopeful that their reports will encourage more communication with constituents, update us on RE activities like fall meetings with rebloom shows and programs, and inform us of new reblooming introductions by hybridizers in their geographic areas. Please note sidebar information that identifies which regions are under the jurisdiction of each director. Area director street address and e-mail information are listed on page one.

A new *Record of Iris Rebloom* form has been created that includes all 12 months of the year. This will be helpful to irisarians in more temperate climates with rebloom throughout the winter as well as summer and fall. I would like

to encourage all of you to keep records of your iris rebloom. Be sure and send a copy of your completed form to your area director for inclusion in the next *Recorder*. Your RE information can be of benefit to others.

In my garden, I check for rebloom twice a month and write in small dates above each month column. One check or tally mark inside a column box

to the left means a cultivar was blooming in the first half of the month and one to the right means the second half. Two marks equals an entire month of rebloom or close to it. Writing in dates above the month columns helps me keep more accurate records. The comments section can include information like stalk characteristics, bud count, and weather conditions.

A new *RIS Symposium* form has also been created for you to list your favorite reblooming irises. Please fill this out and send it to George Sutton. Your list is your vote in the RIS rebloom popularity poll.

I welcome your articles, comments, and suggestions. Attach jpeg photos of yourself and your reblooming irises with your e-mails. Working together we can make the RIR a more informative and enjoyable publication. Please contact me (cbuchheim@verizon.net). I will be happy to make your acquaintance.



'Priscilla Of Corinth' TB
(Miller, B 1994) in our display
garden September 28, 2007.



'Banana Cream' TB (Byers 1989) in
our display garden November 21, 2007

Northwestern Report *By Director Dave Silverberg*

As the new Northwestern Director for the Reblooming Iris Society I had hoped to be deluged with reports, but, alas, none were forthcoming. Therefore I am left with reporting on rebloom in just my own garden.

Rebloom started earlier this year than it has in the past and we did have multiple rebloom. There wasn't as much rebloom as in previous years because we did a major replanting which included all classes from MDBs on up, both bearded and beardless. Mostly medians rebloomed this season. The "talls" lagged behind and began showing stalk formation in late October.

I was quite surprised and pleased to see a repeat bloom on 'Sea Of Dreams' (Schafer/Sacks '00). This was the first repeat bloom I have had since I began growing Siberians many years ago.

Another first for me this year was the appearance of a "bee pod" on 'Love Goes On' (Spoon '04). Determining the pollen parent doesn't present much of a problem since the

only other iris in bloom at the time was 'Twiggy' (Spoon '04) and was growing just 3 - 4 feet away. Seeing what the progeny look like should give an indication of whether it was a "self" or Twiggy pollen. I'm not certain that the pod will have enough warm days to ripen. I could probably bring it indoors to ripen in a sugar solution but I prefer to let nature take its course.

VARIETY

Autumn Jester SDB (*Chapman '00*) . . . 5/29, 7/4, 8/6
Autumn Surge SDB (*Aitken '05*) 6/7
Chelsea Fair SDB (*Godfrey '99*) 6/8
Coney Island SDB (*Keppel '05*) 6/20, 7/1
Dime SDB (*P. Black '05*) 6/11
Firestorm SDB (*M. Smith '94*) 6/16, 7/4
Forever Blue SDB (*Chapman '97*) 7/11
Her Royal Highness TB (*Byer '89*) 8/2
Lad SDB (*P. Black '05*) 6/14
Love Goes On BB (*D. Spoon '04*) 8/7, 10/6
Ruby Eruption SDB (*Chapman '97*) 6/3
Sailboat Bay SDB (*Zurbrigg '01*) 9/12
Twiggy BB (*D. Spoon '04*) 8/10, 10/7

RE DATES

Region 11

Idaho
Montana
Wyoming

Region 12

Utah

Region 13

Washington
Oregon
Alaska

Region 20

Colorado

Dave Silverberg

Nancy Price

Abbey Gardens

32009 S. Ona Way
Molalla, OR 97038

sill1812@molalla.net

USDA Zone 8

Dave and Nancy have collectively introduced about 45 irises (nonremontant). Nancy is currently hybridizing for REs.



Sandy Ives

Northeastern Report *By Director Sandy Ives*

It is with great guilt that I finally attend to the editor's request for a short regional note—

knowing that I know we do have rebloom in our area (Regions 1, 2, and 16) but also knowing that I know almost no members of the Reblooming Iris Society in my region!

I will amend my ways shortly but not in time for the current *Recorder*. I now have my regions' mailing list and I ask everyone in the region to send me an e-mail (iris2003@rogers.com) first, so that I can avoid being caught out again, and second, so that I won't have to send snail-mail requests for the same information.

I am interested in receiving any reblooming report, *especially for non-standard rebloom*. For example, I have 'Rosalie Figge' threatening to open on November 12th. This is no longer

unusual rebloom in Ottawa, Ontario, Canada; it is just a little late. It has otherwise been a disappointing year as far as standard rebloom is concerned. But when I first came to Ottawa, November 12th meant 10 degrees F without the wind chill and much, much colder when the wind started whipping the five inches of snow about my knees. The furthest thought from my mind was reblooming iris.

The saving grace for this year was a median seedling from 2004 blooming for the second year in late May and then throwing up a sequential spike during the spuria season. It has never happened in my garden before. I would be very interested in similar tales.

I am fairly certain that I will be in Austin this April and possibly in Michigan for the JI convention. I would welcome any and all fish tales concerning your seasons.

Region 1

Maine
New Hampshire
Vermont
Massachusetts
Connecticut
Rhode Island

Region 2

New York

Region 16

Canada

Photo Credits page 6:

C. Buchheim, P. Buchheim
Priscilla Of Corinth,

C. Buchheim
Banana Cream, C. Buchheim

Photo Credits page 7:

Sandy Ives, (provided)

Region 6
Ohio
Indiana
Michigan

Region 8
Minnesota
Wisconsin

Region 9
Illinois

Region 18
Kansas
Missouri

Region 21
Iowa
Nebraska
South Dakota
North Dakota



Tim Stanek

Midwestern Report By Director Tim Stanek

The spring of 2007 started off normal with moderate temperatures and growth in my Glenwood garden in southwestern Iowa (Zone 5). Then the hail came when the iris leaves were about 6" tall. Next came a week-long big freeze with temperatures in the teens accompanied by strong winds. Many of my irises were freeze dried and killed outright. Some were barely alive with small sprigs left. About 50 percent of all my irises were killed. Most of these were new acquisitions and seedlings. This check and balance for hardiness happens to me about every ten years.

May was very wet with record rainfall and very few crosses took. A lot of plants resented this moisture and what the freeze had begun, the rains finished off. I consider these two back-to-back weather maladies as one event.

My irises are grown in raised beds on terraced slopes. I made up my mind a long time ago to grow reblooming irises because of the unpredictable spring weather. I figured that it would always get warm in the summer and reblooming irises offered a second chance for enjoyment. As our summer temperatures warmed, the rain stopped. Record dryness set in which helped in keeping the weeds down, but then in late summer our area had an entire month of record rainfall.

In spite of all this, most of the surviving irises bloomed. All I can say is that I am glad I grow reblooming irises and strive to improve them with the popular once-blooming irises. Please, all who live or visit the Midwestern Region, send me your rebloom reports and comments for the next issue of the RIR.

The following list of irises bloomed in August, September, and/or October:

VARIETY	CLASS
Again And Again (S. Innerst '99)	TB
Ahwahnee Princess (G. Sutton '04)	SDB
Autumn Mists (F. Jones '70)	TB
Autumn Tryst (J. Weiler '93)	TB
Baby Blessed (L. Zurbrigg '79)	SDB
Bonus Mama (B. Hager '90)	TB

Cantina (M. Byers '90)	TB
Cornhusker (T. Stanek '05)	TB
Days Of Summer (T. Stanek '02)	TB
Double Shot (G. Sutton '00)	TB
Eternal Bliss (M. Byers '88)	TB
Fall Rerun (B. Hager '01)	TB
Feed Back (B. Hager '83)	TB
Golden Encore (F. Jones '73)	TB
Harvest Of Memories (L. Zurbrigg '85)	TB
I Do (L. Zurbrigg '74)	TB
Immortality (L. Zurbrigg '82)	TB
I Repeat (J. Roberts '98)	TB
Jean Guymer (L. Zurbrigg '77)	TB
Matrix (E. Hall '91)	TB
October Splendor (G. Sides '97)	BB
Patty Ann (T. Stanek '05)	BB
Pink Attraction (E. Hall '88)	TB
Pleasant Peasant (T. Stanek '05)	TB
Remarkable (R. Smith '94)	TB
Raspberry Frost (G. Sutton '01)	TB
Priscilla Of Corinth (B. Miller '94)	TB
Summer Whitewings (G.P. Brown '61)	TB
Sunny Disposition (L. Zurbrigg '91)	TB
Violet Returns (E. Hall '88)	TB
Unchained Melody (C. Mahan '99)	TB

Iris buds that were showing color when stopped by the hard freeze:

VARIETY	CLASS
Christiane Elizabeth (C. Mahan '01)	TB
Daughter Of Stars (D. Spoon '01)	TB
Decker (M. Jameson '01)	TB
Duo Dandy (B. Hager '99)	TB
Earl Of Essex (L. Zurbrigg '80)	TB
Mariposa Autumn (R. Tasco '99)	TB
Mariposa Wizard (R. Tasco '04)	IB
Theme Master (B. Wilkerson '04)	TB

Iris buds that were not showing color when stopped by the hard freeze:

VARIETY	CLASS
Lilla (D. Spoon '00)	TB
Lunar Whitewash (S. Innerst '03)	TB
Sierra Mist (R. Tasco '03)	TB
Tara's Choice (B. Wilkerson '04)	TB
Zurich (M. Byers '90)	TB



Charlie Brown

Southern Report By Director Charlie Brown

I am located 60 miles north of Dallas, Texas just four miles from Oklahoma. We are in USDA Zone 7B. The past two years we have had very little rebloom. We had floods in June and it has been dry ever since. I have been in touch with the Texoma Rainbow Iris Society and members have had very little or no rebloom. The same thing happened last year and many members were disappointed in the rebloom. I currently have about 30 known rebloomers and they have beautiful foliage but no sign of stalks.

I am relatively isolated from most of the clubs in Region 17 and hear very little from Oklahoma. The only communications from this area are in regard to membership. I do not believe that most of the members in the district know that I am the new director.

Our weather in Denison, Texas is like a roller coaster. It was freezing Wednesday, November 14 and today it is in the 70's. I do not attend meetings of other clubs in Texas and the only time I come in contact is through e-mail.

I would like to report that Hooker and Bonnie Nichols of Hillcrest Gardens in Dallas, Texas introduced three rebloomers this year: 'Royal Dagger' IB, 'Halloween Debutante' TB, and 'Swimming Hole' IB. Their rebloom report, including three Louisianas, is as follows:

VARIETY

Autumn Tryst (*J. Weiler '93*) TB
 Bottled Sunshine (*H. Nichols '95*) IB
 Daughter of Stars (*D. Spoon '01*) TB
 Dorothy Devenport (*H. Nichols '03*) TB
 Earl Of Essex (*L. Zurbrigg '80*) TB
 Eleanor Roosevelt (*Sass-McDade '33*) IB
 For Dad (*H. Pryor '97/98*) LA
 Great White Hope (*D. Haymon '00*) LA
 Holy Fire (*G. Sutton '00*) TB
 Kitty D. (*D. Haymon '90*) LA
 Lady Juliet (*H. Nichols '94*) TB
 Lenora Pearl (*H. Nichols '90*) BB
 Pure As Gold (*W. Maryott '93*) TB
 Sooner Serenade (*H. Nichols '84*) TB
 Toro Blanco (*F. Foster '01*) IB
 Total Recall (*B. Hager '96*) TB

Tom Burseen reports that he rarely gets rebloom in Grand Prairie, Texas because he does not water his irises in the summer. However, a number of his cultivars rebloom. It was reported in a southern California Garden that Tom's irises 'Ting Toy Boss' TB SA '00 bloomed in September, 'Giddyup To Go' TB SA '05 formed an exceptionally beautiful clump in November, and 'Gene Machine' TB '93 showed its metallic grape colors in December.

If you have iris rebloom information for our southern area, please mail it to me or e-mail it at broiris@cablone.net. I need your rebloom records for my spring RIR report.

Region 5
 South Carolina
 Georgia
 Florida
 Puerto Rico
Region 10
 Louisiana
Region 17
 Texas
Region 23
 New Mexico
Region 24
 Alabama
 Mississippi

Hooker & Bonnie Nichols
Hillcrest Gardens
www.hillcrestiris.com
 3356 Northhaven Road
 Dallas, TX 75229
USDA Zone 8A

Hooker & Bonnie Nichols' most recent RE introductions are:

Halloween Debutante
 TB '07
Royal Dagger IB '07
Swimming Hole IB '07

Tom Burseen
Burseen Irises
 1513 Ernie Lane
 Grand Prairie, TX 75052
USDA Zone 7B

Request for Slides and Digital Images

Margaret and George Sutton, RIS Slide Program Chairpersons, are in need of good slides of reblooming irises, 10 years old or newer, to update their slide sets. These rebloom slides are sent to clubs requesting them for programs. If you have appropriate slides, please mail them to the address below.

If you have appropriate digital images (jpegs) of reblooming irises, please email them to the Suttons or mail them on a CD to be considered for inclusion in PowerPoint type presentations to be made available on CDs.

Margaret & George Sutton, 16592 Road 208, Porterville, CA 93257-9011

E-mail: margaret@suttoniris.com

Photo Credits page 8:
 Tim Stanek, (provided)

Photo Credits page 9:
 Charlie Brown, (provided)

Eastern Report *By Director Joan Roberts*

Region 3

Pennsylvania
Delaware

Region 4

Maryland
Distric Of Columbia
Virginia
West Virginia
North Carolina

Region 7

Tennessee
Kentucky

Region10

Louisiana

Joan Roberts

Friendship Gardens

342 Schwartz Road
Gettysburg, PA 17325

joan@cvn.net

(717) 334-2400

USDA Zone 6

Joan has introduced over
20 irises. Her most recent

REs include:

Montclair Remembers

TB '04

Nine Eleven Remembered

TB '04

Presby Honors September

TB '04

Serling Innerst

Sterling Gardens

825 Hess Farm Road
Dallastown, PA 17313

inniris@pa.net

USDA Zone 6

Sterling has introduced
over 120 iris cultivars in-
cluding the following REs:

Again And Again TB '99

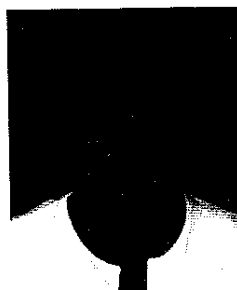
Cee Cee TB '96

Colorwatch TB '87

Lunar Whitewash TB '03

Over And Over TB '01

Twice Delightful TB '89



Joan Roberts

Good Things Are Happening:

Sterling
Innerst has been recom-
mended for nomination

for the Presidency of the Reblooming Iris Soci-
ety. Sterling also had ten seedlings rebloom for
him this year. Knowing the quality of Sterling's
irises, I'm sure they are all wonderful.

Congratulations go to Don Spoon for win-
ning the Wister Medal for 'Daughter Of Stars'
(Spoon '01). A lovely flower in all respects and
an excellent rebloomer.

Two of Clarence Mahan's introductions,
'Unchained Melody' (Mahan '99) and 'Chris-
tiane Elizabeth' (Mahan '01) took first and sec-
ond place in a Region 4 Fall Regional.

Denise Conklin won first, second, and third
place in a Federated Garden Show in the Peren-
nial Class. The Show was put on by the Town
and Country Garden Club of Lancaster, PA.
First place was 'Perfume Counter' (L. Zurbrigg
'72), second place, 'Blue On Blue' (J. Roberts
'03), and third place, 'Berry Classic' (G. Sides
'99). Denise has quite a unique garden with
lots of protection and a definite microclimate.
She can get rebloom on irises that have nev-
er rebloomed for us i.e. 'Beverly Sills', 'City
Lights', 'Blue On Blue' and an entire clump
of 'Barbara My Love'. The latter two were in
bloom just in time to grace her Thanksgiving
table. She is expecting the last of 'Perfume
Counter' to bloom in December! Bonita Mas-
teller from Raleigh, North Carolina reports that
she had 'Double Shot' (G. Sutton '00) on her
Thanksgiving table and the following week
took another bloomstalk to work. WOW!

Many of you may remember the golf cart
driver, Andy Crossland, from the 2001 Nation-
al Convention. He is now a budding hybrid-
izer (no pun intended) who has just germinated
his first seedlings. If Andy's seedlings prove
to be fabulous, I'm not sure who should get the
credit—Andy or his wife, Jeannie, who very
carefully transplanted the new babies into their
own pots and gives them lots of TLC. Ken and
I may not be allowed to see his irises when they
bloom. Andy is afraid that we will tell him to
throw them into the compost pile like I do with

most of mine. At any rate, he certainly had
better germination than my first cross which
yielded only two seedlings!

We had 89 plus seedlings rebloom this year.
The "plus" irises went into the biggest com-
post pile in Pennsylvania. No wonder Andy is
afraid! Fifty irises sporting bloomstalks were
left in the garden for evaluation next year and
39 clumps with seed pods were dug and moved
into the greenhouse before the first hard freeze.
A lot of work—a labor of love.

Not So Good Things: The Drought—Ev-
eryone with whom I have spoken on the East
Coast has complained about the drought. There
are some remontant irises that will find a way
to rebloom despite the drought but the majority
need WATER in order to show their stuff. In
our own garden the irises that were very early
in the season (when we had some rain) or very
late, after we started to have more rain, man-
aged to rebloom. Otherwise the only rebloom
was in the seedling bed that was close to our
water supply. That bed received a good soak-
ing three to four times during the drought and
rewarded us with a spring-like flower bed.

Rot—We have had a lot of rot in our gar-
dens, both in and out of the greenhouses. We
are trying something new this year and so far
so good. When new irises arrive or whenever
we transplant our irises we are soaking them in
Cleary 3336F 2 tablespoons to a gallon of wa-
ter for 15 minutes to a half hour prior to plant-
ing. Remove and let them dry before planting.
Cleary 3336F is listed for use as a preplant dip
treatment for bulb, corms and rhizome rots. If
you do decide to try this, remember when han-
dling any chemical be sure to follow the safety
precautions on the label.

RE in Delaware, USDA Zone 6

VARIETY	CLASS
Cameo Blush (J. Weiler '98)	BB

RE in Pennsylvania, USDA Zone 6

VARIETY	CLASS
Again And Again (S. Innerst '99)*	TB
Anxious (B. Hager '92)	TB
Autumn Tryst (J. Weiler '93)*	TB
Belvi Cloud (K. Jensen '88)	TB
Cameo Blush (J. Weiler '98)*	BB

Champagne Encore (*J.T. Aitken '97*) IB
 Champagne Junior (*O.D. Niswonger '94*) BB
 Clarence (*L. Zurbrigg '91*) TB
 Competition (*R. Smith '94*) TB
 Double Shot (*G. Sutton '00*) TB
 Feed Back (*B. Hager '83*) TB
 Harvest Of Memories (*L. Zurbrigg '85*) ... TB
 Immortality (*L. Zurbrigg '82*) TB
 July Sunshine (*G. Brown '65*) TB
 Low Ho Silver (*M. Byers '89*) IB
 Lunar Whitewash (*S. Innerst '03*) TB
 Matrix (*E. Hall '91*) TB
 Mulberry Memories (*G. Sutton '02*) TB
 My Friend Jonathan (*B. Miller '94*) TB
 Nine Eleven Remembered (*J. Roberts '04*)*... TB
 Northward Ho (*L. Zurbrigg '91*)* TB
 Orchid Cloud (*C. Applegate '74*) TB
 Perfume Counter (*L. Zurbrigg '72*)* TB
 Plum Wine (*J. Weiler '86*) SDB
 Presby Honors September (*J. Roberts '04*)... TB
 Queen Dorothy (*E. Hall '84*) TB
 Rosalie Figge (*J. Mcknew '93*) TB
 Summer Olympics (*R.G. Smith '80*) TB
 Violet Music (*C. Mahan '91*) TB

RE in Virginia, USDA Zone 7

VARIETY	CLASS
Autumn Orangelite (<i>G.P. Brown '62</i>) TB
Baby Blessed (<i>L. Zurbrigg '79</i>) SDB
Christiane Elizabeth (<i>C. Mahan '01</i>) TB
Northward Ho (<i>L. Zurbrigg '91</i>) TB



George Sutton

Our rebloom season started a little late this year. We had no rain from January until September and a problematic irrigation system further complicated matters. We experienced warmer temperatures longer (mid 80's) but the summer was generally cooler than usual. As fall temperatures dropped in mid September, our rebloom fields just exploded with growth and color.

We mowed the rebloomer fields to a two-inch height in late October, in preparation for replanting. By November fourth stalks were coming up all over the fields. Amazing! We took ten stalks to the Region 14 Fall Meeting held October 19-20, that were in the group that had been mowed.

This year's reblooming seedlings were outstanding, as were the ones last year, the second

Rosalie Figge (*J. Mcknew '93*) TB
 Ruby Eruption (*C. Chapman '97*) SDB
 Unchained Melody (*C. Mahan '99*) TB

RE in Maryland, USDA Zone 7

VARIETY	CLASS
Baby Blessed (<i>L. Zurbrigg '79</i>) SDB
Hemstitched (<i>B. Hager '90</i>) TB
Lady Emma (<i>F. Jones '86</i>) MTB
Rosalie Figge (<i>J. Mcknew '93</i>) TB
Twilight Fancies (<i>L. Zurbrigg '01</i>) TB
Zurich (<i>M. Byers '90</i>) TB

RE in North Carolina, USDA Zone 8

VARIETY	CLASS
Autumn Bugler (<i>F. Jones '86</i>) TB
Autumn Tryst (<i>J. Weiler '93</i>) TB
Eleanor Roosevelt (<i>Sass - McDade '33</i>) IB
Immortality (<i>L. Zurbrigg '82</i>) TB
Mariposa Autumn (<i>R. Tasco '99</i>) TB
Rosalie Loving (<i>D. Spoon '03</i>) SDB
Sunny Disposition (<i>L. Zurbrigg '91</i>) TB
Total Recall (<i>B. Hager '92</i>) TB
Zurich (<i>M. Byers '90</i>) TB

*Noted in several reports

Please feel free to e-mail me at Joan@cvn.net anytime you have a report to make or good story to tell about reblooming irises. It just might be in the next Reblooming Recorder.

Thanks and Happy Gardening! -Joan

Southwestern Report By Director George Sutton

year in a row. Michael's seedlings in particular were truly breathtaking. His TBs included six plus increases, three to five branches and up to fifteen buds, well spaced and with good sequential opening. The flowers are spectacular, with many new patterns and lovely modern heavily ruffled form. He really has established an outstanding line of breeders. My TB lines are producing well but are more pastel and subdued in color. Our Median rebloomers have made some giant steps also, especially in form, branching, and bud count. Some unique colors and patterns are showing up as well.

You will find our Porterville, CA rebloom report listed separately (page 26). If you live in the Southwestern Region, please e-mail your rebloom information to info@suttoniris.com or mail it in (address listed on page 1). We need your report to include in the Spring issue of the *Reblooming Iris Recorder*.

Region 14

Northern California
 Nevada
 Hawaii

Region 15

Southern California
 Arizona

Region 22

Arkansas
 Oklahoma

(The newest Sutton RE introductions are listed on page 24.)

Photo Credits page 8:

Joan Roberts, (provided)

Photo Credits page 9:

George Sutton, *M. Sutton*

Leon Vogel, President
**San Diego & Imperial
 Counties Iris Society**
 26440 St. Ives Court
 Murrieta, CA 92563
 (951) 677-5587



San Diego Team with President Leon Vogel, seated

"Remarkable Rebloomers" was the theme for a truly wonderful and power-packed Fall Meeting hosted by the San Diego & Imperial Counties Iris Society, October 12 & 13, 2007. The event began with a Welcome Reception on Friday evening in honor of the 50 attending registrants.

Most Region 15 Fall Meetings are one-day whirlwind events that leave you wondering how so much can be packed into so little time. The Welcome Reception gave the three-fold benefit of a time to 1) socialize with cherished irisarian friends and make new acquaintances, 2) preview the numerous raffle prizes available, purchase tickets, and make choices leisurely, and 3) enjoy the fabulous reblooming irises on exhibit. The Friday evening event was a noteworthy prelude for good things to come.

The highlight of Saturday morning was a two-hour judges training by Mr. George Sutton of Sutton's Iris Gardens in Central California. George gave a PowerPoint presentation that in every way enhanced a detailed study of the "Reblooming or Remontant Irises" chapter in the new 2007 AIS Handbook. He helped us understand the nuances of each of the five reblooming iris categories along with annotated comments on RE iris culture as well as garden and exhibition judging.

In the afternoon, Dr. Richard C. Richards gave an entertaining and informative slide program on "Irises Around the Calendar" with photos and commentary on remontant irises from nearly all classes from

San Diego Fall Meeting: Remarkable Rebloomers

By Carole Buchheim

TBs to Species. He highly encouraged attendees to be daring and grow a wide variety of RE cultivars, new and old.

The big, BIG news of the Region 15 board and general meetings was that attendees voted to host the 2012 AIS National Convention! (Perhaps there should be a fall 2011 RIS Rebloom Convention as well to encourage hybridizers to showcase their REs for a spectacular doubleheader.)

The iris exhibition, though not a juried show, was an inspiration to all. Most of



Part of the Reblooming Iris Exhibit

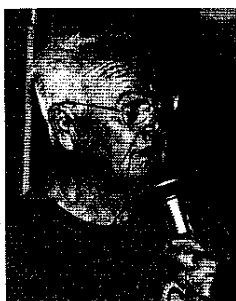
the three to four dozen cultivars were TBs brought in by Paul and Carole Buchheim of Mystic Lake Gardens and Alex and Kitty Stanton. Bitones, bicolors, selfs, variegatas, luminatas—nearly all color classes were represented. Most stalks would have been competitive on a spring show table.



Abundance of Raffle Items

Though the activities of the Region 15 Fall Meeting officially came to a close about 3:30 p.m., the reblooming iris experience was not yet over. Members and friends of the Southern California Iris Hybridizers group were favored with a PowerPoint presentation by George Sutton on the latest and greatest of Sutton's Iris Gardens 2007 reblooming iris seedlings. Exciting new RE cultivars are in the works for future introductions.

Kudos and compliments are well deserved by co-chairpersons, Bill Molner and Edith Schade, President Leon Vogel, and their able-bodied team of assistants!



*George Sutton,
 JT Speaker*



*Richard Richards,
 Afternoon Speaker*

Photo Credits page 12:
 All Photos, C. Buchheim

Record Of Iris Rebloom

AIS Region _____ Name _____ E-mail _____
 USDA Plant Hardiness Zone _____ Address _____ Phone No. _____
 (To find your zone, go to www.gardenweb.com/zones/zip.cgi and type in your five digit zip code.) City, State, Zip _____ Date _____

Variety	Class	Jan	Feb	Mar	Apr	May	Jun	Jul	Aug	Sep	Oct	Nov	Dec	Comments
1														
2														
3														
4														
5														
6														
7														
8														
9														
10														
11														
12														
13														
14														
15														
16														
17														
18														

Note: Please send a copy of this report to your area director. Street address and email information are listed on page 1.

[illegible]

RIS Symposium

We would like you to vote for your favorite
remontant irises that rebloom for you or in your area.

Mail to: **George Sutton**, 16592 Road 208,
Porterville, CA 93257-9011, E-mail: info@suttoniris.com

Name _____ Zone _____

Address _____

TALL BEARDED

1
2
3
4
5
6
7
8
9
10
11
12
13
14
15

MEDIANS

1
2
3
4
5
6
7
8
9
10
11
12
13
14
15

BEARDLESS

1
2
3
4
5
6
7
8
9
10

ARIL, MDB, SPECIES

1
2
3
4
5
6
7
8
9
10

For more information:

Go to the AIS website

www.irises.org

On the home page, scroll
down and click on the
underlined

**AIS 2008 Convention
Information**



You are Cordially Invited to Attend
**The Lone Star State 2008
AIS National Convention
in Austin, Texas**

April 14 to April 19, 2008

Sponsored by the Iris Society of Austin

Convention Headquarters:

**Omni Hotel Southpark, 4140 Governors Row
Austin, Texas 78744**

Reservations may be made by:

Phone: (512) 448-2222

Fax: (512) 442-8028

Online: <http://www.irisarian.com/lonestar2008>

Full Registration Postmarked:

by Feb. 15 - \$199 • by Mar. 15 - \$225 • after Mar. 15 - \$250

Seven Guest Gardens:

**San Marcos Tourist Center Garden
John Dromgoole's The Natural Gardener
Roger & Marney Abel Garden
Bannockburn Baptist Church Garden
Lee & Sandy Schroeder Farm
Brushy Creek Community Center Garden
Ed & Janet Murphy Garden**

Two Optional Tours:

**Austin City Tour
Fredericksburg Tour**



Terry Aitken

2007 Rebloom Report, Washington State, Zone 8 *By Terry Aitken*

2007 will go down as a year that was anything except normal. While the Northwest escaped the extremes of heat waves and subsequent hard freezes, we managed our own version of "abnormal" and it did affect rebloom.

Spring bloom season was wonderful, that being dry and cool. Many crosses took and most involved rebloomers. In recent years, I have been reporting on rebloom, particularly Siberian irises, as it related to soil temperature. This year, other types came into play. Our "normal" spring bloom season has soil temperatures at about 60 degrees. The soils slowly heat up until the early days of August when we normally have a mid-summer heat wave up around 100 degrees air temp and soil temp rises to around 68 degrees. This year, we got our heat wave at the beginning of July accompanied by the rise in soil temp. Rebloom on Siberians did stop. What followed was a very unusual summer with much overcast and even an occasional rain, almost unheard of in the Northwest. Our soil temperatures dropped steadily until they were back down at 60 degrees by the first August. Rebloom on Siberians started up again! By this time they were so confused that bloom occurred way down in the foliage.

The real eye opener came with the bearded iris rebloom. The TB's behaved as usual with 'Again And Again' (Innerst '99) leading the charge in early July (It was still sending up bloom shoots in November as we abandoned the transplant fields. The SDB, 'Autumn Surge' (Aitken '05), which I have never seen in rebloom until October, was in full rebloom in late July. Apparently, their cold feet told them that winter was coming? Many other SDB rebloomers followed suit. IB rebloomers were confused as they bloomed sporadically whenever they felt like it. 'Waxen Image' (Aitken '02) rebloomed

in August instead of October. There was simply no pattern or sequence to IB, MTB or BB rebloom. 'Many Mahalos' (Aitken '03) was the most persistent IB with bloom from August well into November. (Many Mahalos also is proving to be a good breeder.)

We are always on the lookout for plants from out of region that perform well in the Northwest. This year, it was Sterling Innerst's 'Lunar Whitewash' ('03) from New England and Michael Sutton's 'Snow Melt' ('04)

from southern California that were the star attractions. Both performed well in September. Both have great substance, flower form, and show-bench stems.

Amongst the beardless, we had August rebloom on one 'ensata x pseudacorus' cross, even though it was



Autumn Surge SDB
(T. Aitken '05)

down in the foliage like the Siberians. Amongst the Japanese seedlings, we had one plant in a population of one-year-old plants that bloomed in June, then again in August, September, and October. There was another stem rising as we left town in November. This plant could be responding to cool soils. It was an admirable performance because the plant had not received special treatment such as extra water, compost or even fertilizer. This was a good year in spite of all the weird weather. Hopefully we learned something in the process.



Lunar Whitewash TB
(S. Innerst '03)

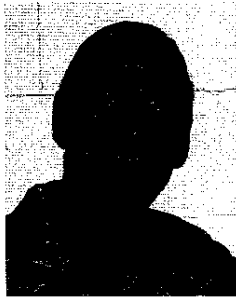
Photo Credits page 17:
Terry Aitken, P. Buchheim
Again And Again, C. Buchheim
Lunar Whitewash, C. Buchheim
Autumn Surge, T. Aitken

Aitken's Salmon Creek Garden

www.flowerfantasy.net
608 NW 119th St.
Vancouver, WA 98685
aitken@flowerfantasy.net

Terry Aitken has introduced over 200 irises. His most recent REs are:

Autumn Surge SDB '05
Frosty Moonscape TB '06
Love Is All Around TB '05
Maui Mango IB '05
Perpetual Indulgence SDB '05
Pinch Me SDB '06



Growing Reblooming Tall Bearded Irises in Southern California

By Richard C. Richards

Richard C. Richards
1048 Circle City Drive
Corona, CA 92879
mongohi@earthlink.net
USDA Zone 9

Richard C. Richards

Richard is an Emeritus Professor of Philosophy at California State Polytechnic University, Pomona.

He has a passion for Pacific Coast Natives and reblooming irises and has introduced three REs:

Amethyst Winter TB '98

Bernice's Legacy TB '00

Marty Richards TB '05

which is enhanced by good garden practices. This is a brief guide to those irises and those practices. The secret is to start with tall bearded irises that are genetically capable of producing off-season bloom. In southern California such an iris can bloom any day of the year, and in my own garden I have had irises bloom every day of the year. This takes several dozen varieties and some planning, but it can be done.

Southern California could be the reblooming capital of the world because of its mild climate and ideal growing conditions. It is simply a question of people adding reblooming irises to their garden.

Most tall bearded irises are not genetically capable of producing off-season bloom. Their yearly growth cycle involves only one bloom season in spring. The reblooming iris rhizome goes through two and sometimes more cycles in a year, and therefore produces bloom during the spring and at other seasons of the year.

Soil Preparation

The alkaline soil of southern California is suitable for most rebloomers. Because these irises bloom and grow faster than other irises, they are heavy feeders, and need an abundance of the right nutrients in the soil to bring out their reblooming tendencies. While soil which has never grown irises will lead to good growth for a year or two, the soil needs amending to provide the proper conditions for these irises to thrive.

Primary among the conditions promoting rebloom is good drainage. In many parts of southern California, the soil consists of decomposed granite, and the drainage is excellent. In other parts of this area, the soil is heavy clay, and needs work to prepare it.

I grow the irises year after year in adobe soil. I prepare this soil in the following way each two years. Drainage is improved by the use of gypsum, often as heavy as a pound per

square foot. People with decomposed granite soil, or other soil with good drainage, can omit gypsum. I add peat moss at the rate of as much as one cubic foot for every thirty square feet of garden soil; figures are approximate. It depends on how compacted my soil is after two years.

The only way I have found to effectively amend the soil is by digging the irises up, dividing them, and putting them back in amended soil. This can be done every year, but usually the second year the irises are in the same soil, the better they bloom. In the third year in the same soil, reblooming iris growth is usually diminished unless they are divided and the soil enriched. Remember that these irises are growing twice as fast, and blooming twice as often, as their non-reblooming cousins.

Dividing

I believe that dividing every other year is best. There are two optimal times for dividing, though you can divide at most any time. If you divide at times other than the optimal times, you may lose one cycle of bloom.

Late spring right after bloom, or early fall, are the optimal times for dividing. Dig the irises out of the ground, locate the biggest rhizomes showing new growth, break off old rhizomes showing no growth and throw them away, pull brown foliage off the rhizomes, trim the roots to about two or three inches from the rhizomes, and leave them out of the ground for at least 48 hours. The breaks and gashes need time to heal.

The rhizomes can be out of the ground for several weeks without damage, but if they have begun to brown at the tips of the foliage, which they do after a week or so out of the ground, they should be put in a bucket of water to hydrate for at least a half hour. Then add bleach to the water in the bucket to make a ten percent solution. Leave the irises in for another half hour and then rinse. I rinse by emptying the bucket, putting fresh water in it, and putting the irises back into the bucket of water for another half hour.

You are now ready to plant. If you have one rhizome to plant, give the iris plenty of room, at least a foot on all sides. If you have several of one variety to plant, and want a clump, place up to three rhizomes with their non-growing ends together and their foliage ends pointing outward.

Dig a hole in your amended soil where you want your irises to grow. The hole should be about a foot deep. At the bottom of the hole put a handful of granulated fertilizer. The best for irises has a low nitrogen (first number of the numbers listed on the fertilizer bag).

Also throw a handful of superphosphate into the hole, mix the amendments and the soil, fill the hole almost full with soil, leaving the amendments at the bottom of the hole, and place the iris in position so that its top shows above the soil in heavy soils, or is just under the soil about an inch in light, well-drained soils

Plant the iris on a slightly raised mound. Avoid planting in a low area where water can collect. Push the soil around the rhizome, firm the soil under the rhizome with a planting stick if you want, and stomp all around the iris. Water and keep the irises moist, but not wet, for several weeks until new growth shows.

I normally water once a week unless we have one of our infrequent rains. Too much water will encourage rot in the rhizome. It is better to err on the dry side than the wet side once the newly planted rhizome shows new growth.

In addition, I fertilize with liquid Miracle-Gro from a hose-end unit, every month or two

months, less often in winter when growth is slower. Don't use Miracle-Gro for lawns. The nitrogen number is too high, and it will encourage foliage growth but not flower growth. Few people grow irises for their foliage.

After your dividing session, you will most likely have some rhizomes left. Give them to gardening friends. Your reputation as a wonderful gardener and really fine human being will be enhanced.

Pests and Problems

Reblooming irises have few problems. Spray occasionally for chewing insects and aphids. Bacterial soft rot can occur, and while I ignore it and sometimes lose a rhizome or a whole plant, it can be treated by sprinkling a cleanser with chlorine, or straight bleach, poured onto the diseased rhizome.

Where to Get Reblooming Irises

I wish I had some good news, but I don't. Occasionally you can get very old and dependable reblooming irises at your local nursery.

Since the market for these irises is not yet fully developed, you may have to contact iris specialty nurseries and have the irises you want shipped at the proper time. This is less work than it sounds, and means that you have to acquire the catalog of one or more commercial growers of reblooming irises, make your choices, send a check, and the irises will be delivered to your door at the proper time. I have had the best results in purchasing reblooming iris stock from growers in my general geographical region since our growing conditions are quite similar.



Marty Richards TB (*R. Richards '05*)
HM Award 2007



Bernice's Legacy TB
(*R. Richards '00*)

Photo Credits page 18:
R. Richards, C. Buchheim

Photo Credits page 19:
Marty Richards, C. Buchheim
Bernice's Legacy, C. Buchheim

Bridge In Time Iris Garden
 www.bridgeintime.com
 3057 Mitchell Weaver Road
 Scottsville, KY 42164
 bridgeintime@aol.com
 USDA Zone 6

Betty hybridizes for
 rebloomers and has over 30
 introductions. Her latest
 RE introductions are:

All Revved Up TB '06
 Echo Location TB '07
 Serenity Returns TB '06



Betty Wilkerson

I Believe *By Betty Wilkerson*

It's 2007 and there still seems to be some controversy about what qualifies as rebloom. If it doesn't bloom in the spring, is it really a rebloomer? If it blooms after the spring bloom season, but not in the fall, is it still a rebloomer? Can all irises rebloom if given the right incentives? In the last couple of years, I've read or heard these questions and more.

While opinions abound, the accepted standard for rebloom is published in the AIS Judge's Handbook. Until the recent update, there were four types of rebloom defined in the handbook—repeat, cycle, sporadic, and everbloomers (now classified as multiple blooming irises). The fifth, and newer, classification—secondary stalk rebloomers—is unknown to me and I will withhold comment at this time.

Both the cyclic and repeat rebloomers have a predictable second season of bloom. Repeat bloom, after the first wave of bloom is over, seems dependent on the growth or maturity of the individual rhizomes. Some say this isn't rebloom, but it is described as rebloom in most publications. It's listed in the handbook, and it does extend iris bloom season.

'Romantic Evening', 'Chilo', and 'Perfect Interlude' have also been reported to have this bloom habit. A child of 'Visiting Royalty' X 'Summer Radiance' gave repeat bloom one summer, but not each year. 'Visiting Royalty' is out of 'Romantic Evening'. 'Pure as Gold' behaves as a repeat bloomer in my garden, but I understand from reports that it blooms in the fall in other areas.

'Summer Radiance' is from this group, or so I've always thought! It blooms approxi-

mately six weeks after its spring bloom. It will bloom on all remaining rhizomes, if they have reached maturity. Since it blooms in the early part of the spring season, the repeat stalks usually appear about a month after the other irises have finished blooming. A remarkable sight when it's the only thing blooming in a display bed.

Pink Attraction TB (J. McKnew '93)



Apparently an iris can bloom in two different rebloom categories. 'Summer Radiance' has behaved in the above mentioned manner for ten years. Robin Shadlow reported fall bloom for SR last year. Now, I have a report of a fall stalk in Virginia!

Cyclic rebloomers may need a drop in average temperatures to trigger rebloom. Water, especially rain water, seems to be another factor. Maybe this indicates a combination of water and temperature requirements? These factors trigger cyclic rebloom at different times in different climates.

The sporadic rebloomers and the multiple blooming irises do not seem to require cool night temperatures to extend their bloom stalks. I believe the sporadic rebloomers and the multiple blooming irises are all the same class, but they vary in trigger intensity.

The sporadic rebloomers have weak triggers and rarely rebloom for me. These include the west coast rebloomers and Australian rebloomers. They will occasionally rebloom here, but rarely, and with no predictability. 'Frere Andre', 'My Valentine', and 'Inferno', to mention a few, have put up occasional stray stalks in the summer or fall. This is an exciting experience but rare.

Multiple blooming irises frequently do bloom off season for me. Irises like 'Immortality', 'Pink Attraction', 'Catalina', 'Total Recall', etc. can rebloom any month through out summer and fall up to a hard freeze, if all needs are met. All of these, except 'Total Recall', bloomed in late June, July or August in 2006.



Pure As Gold TB
 (W. Maryott '93)

Romantic Evening TB
 (J. Ghio '96)



Photo Credits page 20:
 Betty Wilkerson, (provided)
 Pink Attraction, C. Buchheim
 Pure As Gold, C. Buchheim
 Romantic Evening,
 V. Christopherson

'Total Recall' bloomed through the summer of 2005. Even 'Violet Miracle', which I'd considered a cyclic rebloomer, bloomed in July and August in 2006. Four huge mature clumps produced four stalks during the summer and then produced several stalks in the fall.

For me, and only me, anything that blooms outside the regular spring bloom season is simply a joyous event! By definition, a rebloomer must bloom a second time, in addition to, and outside of, the spring season! Maybe the irises I love are not, technically, rebloomers! I won't argue over definitions. I'll be more than happy to let someone else fight that fight.

Can all irises bloom off-season, or rebloom, if their needs are met? I don't really think so, but how do you prove a negative? If you've

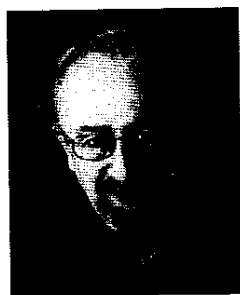
had 'Silverado' bloom any time other than spring, please drop me a line, and I'll seriously consider changing my opinion!

I'm not a genetics expert or a scientist but that hasn't stopped me from doing what I've loved doing—creating beautiful irises that bloom again and again. I will venture a guess that it's slowed me down a time or two. At any rate, it has limited my expectations from any given cross. This might be a good thing!

In conclusion, my observations and reports are true for my garden. I make no claims as to knowledge of other gardens or other climatic zones. Why do I share my observations? I hope to make the job a little easier for the next person that wants to expand the selection of irises that bloom again, and again . . . and again!



Total Recall TB
(B. Hager '92)



Clarence Mahan

Notes on 'Rosalie Figge' By Clarence Mahan

As I write these thoughts on October 30, 2007, several irises are blooming in my garden. The most spectacular and most beautiful is 'Rosalie Figge.' Its deep violet, modern, well-formed flowers are attached to well-branched stems. It has all the attributes of an iris ready to receive a Best Specimen rosette. I long wondered why 'Rosalie Figge' rebloomed. The cross that produced it—'Titan's Glory' X 'Violet Miracle'—was not a cross from which I would ever have tried to produce reblooming seedlings.

I have long thought it highly likely that the reblooming characteristic is at least in part the result of hybrid vigor (heterosis). I most definitely was the first to adopt this view. In his comments on *Iris lurida* in *The Genus Iris*, William Rickatson Dykes wrote:

It has the additional advantage of sometimes flowering a second time in the autumn, which is a further argument in support of its hybrid origin. In cultivating a large collection of Irises, it will be found that hybrids are much more apt to flower a second time in the autumn than RE species.

If you grow reblooming irises you have noted that as a class they tend to bloom earlier in the spring than once-blooming irises. It is likely that this characteristic, as well as their bloom in

the autumn, is related to hybrid vigor and an associated alteration of protein production related to vernalization. Vernalization is what botanists call the process by which a flower comes into bloom.

Many experienced hybridizers of reblooming irises look for parents among once blooming irises that bloom early in the spring. The tendency of 'Titan's Glory' to bloom early in the season may have been the reason Jane McKnew chose to use it as the pod parent of a cross with 'Violet Miracle.' My initial assumption that the two parents shared many of the ancestors was probably mistaken. Trying to do a pedigree of 'Titan's Glory' is hampered by the large percentage of numbered seedlings in it ancestry but it can be safely said that it is not *closely* related to 'Violet Miracle.'

Perhaps the seedling that became 'Rosalie Figge' was a one-in-a-million event. On the other hand, how many hybridizers have tried using 'Titan's Glory' since Jane McKnew daubed 'Violet Miracle' pollen on its stigmatic lips? With the right pollen parents, one might obtain some exceptionally beautiful reblooming irises. Granted, many of them would have deep violet flowers. But who knows what recessive genes are waiting to reveal themselves?

Clarence Mahan
RIS Immediate Past President
9311 Churchill Road
McLean, VA 22101
CEMahan@aol.com
USDA Zone 7

Clarence has introduced about 30 cultivars. He currently introduces through Winterberry Gardens and his REs are as follows:

China Nights TB '90
Christiane Elizabeth TB '01
Forever In Love TB '95
Unchained Melody TB '99
Violet Music TB '91



Rosalie Figge TB
(J. McKnew '93)

Photo Credits page 21:
Total Recall, C. Buchheim
Clarence Mahan, (provided)
Rosalie Figge, C. Buchheim

Winterberry Gardens
1225 Reynolds Road
Cross Junction, VA 22625
vspoon@aol.com
USDA Zone 6B

Don and Ginny Spoon
hybridize many
reblooming irises. They
offered five new RE intro-
duction in 2007 as follows:

Ginny Spoon:
Autumn Sunrise TB

Don Spoon:
Kumquat SDB
Lemon Lollypop TB
Moss Spot SDB
UFO TB BC Flat Top



Ginny Spoon

Multiple Reblooming Irises *By Ginny Spoon*

Most of our readers, hopefully, have grown reblooming irises that bloom in the spring and then bloom again in the fall when the weather turns cooler and the nights are shorter. There are fewer of us who have had the opportunity to grow multiple rebloomers (those that bloom more than twice a season), perhaps because we live in colder zones. California gardeners have been able to have multiple rebloomers in their warm California zone; some will bloom eleven months of the year.

Our zone is colder and we get frost most of the time in late October, which may not stop the rebloom if it does not get below 28 degrees at night. By October 31st we had three nights of hard frost. Most of the open blooms froze, but the stalks and remaining buds were fine. We expect to see more rebloom,

perhaps through Thanksgiving. Some years our rebloom season has extended until Christmas.

Tall bearded 'Total Recall', 'Eternal Bliss', 'Over and Over', 'Again and Again' and 'Champagne Elegance' have rebloomed more than once for us. Some years they will send up stalks in July and August, and they usually will rebloom again in September and October.

Intermediates 'Double Your Fun' and 'Constant Companion' are also delightful multiple rebloomers and they have rebloomed for us four times in a season some years. Our BB 'Love Goes On' has rebloomed as much as three times over as many months, and one year, when it was perfect weather for rebloom (cool and rainy), 'Midsummer's Eve' started to bloom with the miniature dwarfs and continued to bloom into the summer every month until we had a hard

freeze. 'Midsummer's Eve' has proven to be a good parent for multiple rebloomers such as our BB 'Twiggy'.



Twigg BB (D. Spoon '04)

While in Texas last month, I talked to several club members who grew 'Daughter of Stars', and they told me that it had rebloomed over three months in their gardens.

In our garden, 'Daughter of Stars' reblooms late in the season but it is very winter hardy. 'Daughter of Stars' and 'Aunt Margaret' are our best performers in the cold and both will continue to rebloom until it reaches 26 degrees at night and below freezing in the daytime. Don hopes to put this winter hardy trait into our rebloom seedlings so that more people can enjoy rebloom in colder zones and also so that we can enjoy rebloom longer into the early winter.

We have been evaluating many seedlings this fall from 'Daughter of Stars' crosses, and they are quite lovely and are reblooming as I write this article. Several seedlings rebloomed in early September. One seedling out of (Daughter of Stars X Starring) is a plum luminata with golden yellow beards and centers, and another (Aunt Margaret X Daughter of Stars) is a darker purple than DOS and has white luminata lines. Don believes it has four doses of luminata as there is no white area around the beards.

Our seedling (Purple Magic X Daughter of Stars) won an EC at our October 20, 2007 reblooming iris show for C&P. It had 12 buds and was a tall, flared and ruffled purple self. 'Purple Magic' has been reported to be a mul-



Aunt Margaret TB
(D. Spoon '02)



Winterberry Gardens

multiple rebloomer in zone 7. We were excited to discover that 'Starring' was a rebloom carrier, producing reblooming seedlings when crossed with a rebloomer.

We usually do not get rebloom in the summer as we are not able to irrigate all the beds. The major trait that we look for in multiple rebloomers is that they put up stalks in late August and early September and continue to rebloom until the freezing temperatures stop them in late November. We are crossing together rebloomers that do well for us so that we continue to get earlier rebloom.

This year was a banner year for us as we have evaluated 165 new seedlings that rebloom, many of which rebloomed in late August and September. Don and I will be crossing those seedlings next spring and hopefully, extend the rebloom season even further. Multiple rebloom occurs more often for us in a clump with the cultivar sending up stalks at different times from different plants in that clump during the season. However, there are some irises that can mature faster than others and send up another stalk from the same plant more than twice a season. Lately it is getting to be a rare occurrence that we have not had to dig up and sell the clumps thus we have not been able to enjoy as much multiple rebloom except in the newer purchases and our own seedlings.

This summer we purchased some new rebloomers and planted them in early July. We have already had rebloom on some, and some others have stalks. 'Breaking Point' SA by Michael Sutton 2007 has a tall stalk with 7 buds; blooms have light yellow standards and grape falls with white splashes and upturned spoons. It has good increase and we are looking forward to seeing it again in the spring. Great work Michael!

Also putting up a stalk is 'Mountain Sunrise' 2007 by Michael Sutton, 'I'll Be Back' IB 2004 by Terry Aitken, and 'Hot Glow' IB 2005 by Rick Tasco (showing color now). Ones that rebloomed in early October are: 'White Bow Tie' SDB 2007 (perfectly flared, wide and ruffled) by George Sutton, 'Ahwahnee Princess'

(a pink self with blue beards; great color) SDB 2004 by George Sutton, 'Replicator' SDB 2006 by Rick Tasco, and 'All That Magic' (very lovely purple) SDB 2004 by Rick Tasco.



Purple Magic TB (*D. Spoon '97*)

our Regional tour next May, so thank you to all the hybridizers who went to all that work to create those lovely irises that we love. It takes special patience to produce reliable rebloomers with modern formed flowers and well-branched stalks.



I'll Be Back IB (*T. Aitken '04*)

Photo Credits page 22:
 Ginny Spoon, (*provided*)
 Winterberry, *G. Spoon*
 Twiggy, *G. Spoon*
 Aunt Margaret, *G. Spoon*

Photo Credits page 23:
 Purple Magic, *G. Spoon*
 Breaking Point, *M. Sutton*
 I'll Be Back, *T. Aitken*
 Replicator, *C. Buchheim*

Again, these are ones that we just purchased this year and planted in July. They all have good increase so we are not worried they will bloom out. We planted them in new raised beds and watered them during our dry summer. These new beds will also be in the center of our garden for



Breaking Point TB (*M. Sutton '07*)



Replicator SDB
 (*R. Tasco '06*)

Sutton's Iris Gardens
 www.suttoniris.com
 16592 Road 208
 Porterville, CA 93257
 info@suttoniris.com
USDA Zone 9

Sutton's Iris Gardens has been in operation for 24 years. Their 2007 RE introductions include:

George Sutton:
Spirited SDB
White Bow Tie SDB

Michael Sutton:
Breaking Point TB SA BC
Fall Enterprise TB
Line Drive IB
Mountain Sunrise TB
Spiked IB



George Sutton

2007 Rebloom Parent Report *By George Sutton*

We have noticed that certain varieties of named irises seem to have a dominant

rebloom gene that induces many of the offspring to rebloom. Some, for example, like 'Matrix', have produced up to 80% reblooming seedlings. 'Matrix' produces mostly yellow and white, yellow, or white seedlings; very few of which are introduceable. To produce a well-formed flower from 'Matrix' crosses, one needs to use a well-formed flower as the other parent.

Other reblooming irises that seem to have a dominant rebloom factor are:

Standard Dwarf Bearded

Ahwahnee Princess	Great form, many color combinations
Betty Boop	Good, but mostly yellows
Cache of Gold	Use wide parents
Hot	Consistent RE most zones
Irish Chant	Fantastic parent
Little Blue-Eyes	Gives lots of blue beards
Spirited	Good form
White Bow Tie	Good form



Matrix TB
(E. Hall by Zurbrigg '91)

Photo Credits page 24:
 George Sutton, *A. Stanton*
 Matrix, *C. Buchheim*
 White Bow Tie, *M. Sutton*
 Clarence, *C. Buchheim*
 Ahwahnee Princess, *T. Aitken*

Photo Credits page 25:
 Alex Stanton, *K. Stanton*



White Bow Tie SDB *(G. Sutton '07)*

Intermediate Bearded

Line Drive	At this point we've only recorded this one
------------	--

Miniature Tall Bearded

Claire Doodle	Parent of next year's SDB x MTB intro 'Pushing The Envelope'. Seems to have dominant rebloom genes. This is the only MTB that we are aware of that does.
---------------	--

Tall Bearded

Double Shot	Good round form and color
Clarence	Mostly shades of light blue
Mother Earth	Use this with wild colors
Tropical Delight	All around excellence
Mountain Sunrise	All around excellence

These last two are our favorites, particularly 'Mountain Sunrise', and are probably the best parents we've ever used for oncres and rebloomers both. The seedlings are outstanding in growth, branching, bud count, color and form. 'Mountain Sunrise' is definitely a dominant

rebloom carrier. It will be used heavily here for years to come.



Clarence TB *(L. Zurbrigg '91)*



Ahwahnee Princess SDB
(G. Sutton '04)



Alex Stanton

Rebloom Report, Escondido, CA By Alex Stanton

My wife, Kitty, and I have been growing irises for about three years and our half-acre back yard is already bursting at the seams. We live in Zone 9, a

half-hour drive north of San Diego. It's paradise for growing rebloomers, including medians. In our climate we can enjoy year around iris bloom. We water weekly and fertilize regularly. The following report only reflects summer and fall rebloom.

Ju	Au	Se	Oc	No	Variety	Hybridizer	Class
					Constant Companion* (C. Marsh '95)		IB
					Fast Forward* (J.T. Aitken '02)		IB
					Good Day Sunshine* (L. Lauer '98)		IB
					Many Mahalos* (J.T. Aitken '03)		IB
					Waxen Image* (J.T. Aitken '02)		IB
					Wise* (T. Johnson '01)		MDB
					Rave Review* (J.&V. Craig '92)		MTB
					All That Magic* (R. Tasco '04)		SDB
					Baby Blessed* (L. Zurbrigg '89)		SDB
					Flower Shower* (J. Weiler '90)		SDB
					Plum Wine* (J. Weiler '86)		SDB
					Refined* (J. Weiler '87)		SDB
					Velvet Echo* (A.&D. Willott '05)		SDB
					Aaron's Dream (G. Sutton '94)		TB
					After The Storm (S. Innerst '92)		TB
					Again And Again (S. Innerst '99)		TB
					Alien Mist (C. Bartlett '98)		TB
					Anything Goes (B. Hager '98)		TB
					Autumn Circus (B. Hager '90)		TB
					Barn Dance (M. Byers '91)		TB
					Be A Dream (O.D. Niswonger '92)		TB
					Beautiful Friendship (F. Kerr '04)		TB
					Beg To Differ (F. Kerr '99)		TB
					Bernice's Legacy (B. Miller '00)		TB
					Bewitchment (J. Ghio '04)		TB
					Billionaire (M. Byers '87)		TB
					Blatant (M. Byers '90)		TB
					Blue Kentucky Girl (Schreiner '02)		TB
					Blue Moonlight (M. Byers '89)		TB
					Bolder Boulder (T. Magee '00)		TB
					Bountiful Harvest (B. Hager '91)		TB
					Bursting Bubbles (J. Ghio '01)		TB
					Call Your Name (F. Kerr '04)		TB
					Casual Elegance (J.T. Aitken '04)		TB
					Champagne Elegance (O.D. Niswonger '87)		TB
					Chartered Course (F. Kerr '05)		TB
					Chief Hematite (J. Gibson '83)		TB
					City Lights (M. Dunn '91)		TB
					Classic Bordeaux (R. Ernst '96)		TB
					Clear Morning Sky (R. Ernst '91)		TB
					Clown Around (V. Christopherson '03)		TB
					Coral Chalice (O.D. Niswonger '83)		TB
					Corn Harvest (C. Wyatt '77)		TB
					Crackling Caldera (J.T. Aitken '03)		TB
					Dashing (M. Byers '91)		TB
					Daughter Of Stars (D. Spoon '01)		TB
					Days Of Summer (T. Stanek '02)		TB

Ju	Au	Se	Oc	No	Variety	Hybridizer	Class
					Deborah Dances (B. Miller '99)		TB
					Double Trouble (J. Hedgecock '92)		TB
					Double Vision (J. Ghio '99)		TB
					Duke of Earl (M. Byers '87)		TB
					Duo Dandy (B. Hager '99)		TB
					Earl Of Essex (L. Zurbrigg '80)		TB
					Eggnog (M. Byers '90)		TB
					Fall Rerun (B. Hager '01)		TB
					Fashion Passion (T. Burseen '93)		TB
					Feed Back (B. Hager '83)		TB
					Forever Yours (B. Hager '93)		TB
					Frequent Flyer (R. Gibson '94)		TB
					Glowing Seraphin (B. Miller '87)		TB
					His Royal Highness (M. Byers '89)		TB
					Holy Night (K. Mohr '83)		TB
					Honey Scoop (G. Sutton '97)		TB
					Jennifer Rebecca (L. Zurbrigg '85)		TB
					Jurassic Park (L. Lauer '95)		TB
					Lilla (D. Spoon '00)		TB
					Lilting (M. Byers '91)		TB
					Lunar Whitewash (S. Innerst '03)		TB
					Maiden (M. Byers '88)		TB
					Mariposa Autumn (R. Tasco '99)		TB
					Mariposa Skies (R. Tasco '96)		TB
					Masterwork (L. Zurbrigg '01)		TB
					Midnight Caller (M. Byers '90)		TB
					Misty Twilight (M. Byers '88)		TB
					My Friend Jonathan (B. Miller '94)		TB
					Next In Line (G. Sutton '01)		TB
					Over And Over (S. Innerst '01)		TB
					Ozark Rebounder (B. Nicodemus '03)		TB
					Pepper Blend (W. Moores '77)		TB
					Pink Attraction (E. Hall '88)		TB
					Pleasant Peasant (T. Stanek '05)		TB
					Priscilla Of Corinth (B. Miller '94)		TB
					Pure As Gold (W. Maryott '93)		TB
					Recurring Fantasy (L. Lauer '00)		TB
					Renewal (G. Sutton '04)		TB
					Renown (L. Zurbrigg '92)		TB
					Return Of Innocence (G. Sutton '01)		TB
					Sea Of Love (L. Lauer '05)		TB
					Sea World (M. Byers '90)		TB
					Shoot The Moon (M. Byers '87)		TB
					Sunny Disposition (L. Zurbrigg '91)		TB
					Team Spirit (K. Keppel '05)		TB
					True Spirit (R. Tasco '04)		TB

*Planted in July



George Sutton

Rebloom Report, Porterville, CA By George Sutton

What follows is not a complete list of what rebloomed for us in Porterville, CA, (Zone 9) as nearly all rebloomers that we grow rebloomed.

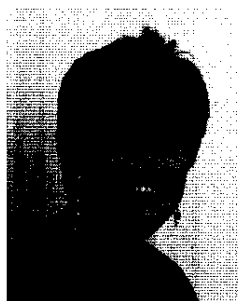
It is a list of the varieties that we considered had exceptional blooms and stalks. In walking the reblooming fields, these irises showcased spring bloom vigor and quality.

My	Jn	Ju	Au	Se	Oc	No	Variety	Hybridizer	Class
							Champagne Encore (J.T. Aitken '97) ...	BB	
							Lemon Up (T. Magee '94)	BB	
							Minneola (G. Sutton '05)	BB	
							Abbey Chant (G. Sutton '98)	IB	
							Candy Rock (G. Sutton '00)	IB	
							Concertina (G. Sutton '00)	IB	
							Goddess Of Yellow (O.D. Niswonger '00) ..	IB	
							Good Day Sunshine (L. Lauer '98)	IB	
							Holidaze (G. Sutton '02)	IB	
							Line Drive (M. Sutton '07)	IB	
							Low Ho Silver (M. Byers '89)*	IB	
							Spiked (M. Sutton '07)	IB	
							Vintage Press (G. Sutton '99)	IB	
							Viper (G. Sutton '99)	IB	
							What Again (A. Ensminger '91)	IB	
							Winter Pearl (G. Sutton '01)	IB	
							Mighty Mouse (G. Sutton '04)	MDB	
							Claire Doodle (D.C. Nearpass '00)	MTB	
							Lady Emma (F. Jones '86)	MTB	
							Ahwahnee Princess (G. Sutton '04)	SDB	
							Baby Blessed (L. Zurbrigg '89)	SDB	
							Betty Boop (G. Sutton '06)	SDB	
							Blueberry Tart (C. Chatman '02)	SDB	
							Cache Of Gold (G. Sutton '04)	SDB	
							Drop Of Sunshine (S. Sutton '05)	SDB	
							Flower Shower (J. Weiler '90)	SDB	
							Forever Blue (C. Chapman '97)	SDB	
							Hot (M. Byers '91)	SDB	
							Irish Chant (G. Sutton '01)	SDB	
							Jelly Belly (G. Sutton '04)	SDB	
							Little Blue-Eyes (J. Weiler '93)	SDB	
							Negra Modelo (G. Sutton '99)	SDB	
							Spirited (G. Sutton '07)	SDB	
							Sugar Maple (G. Sutton '03)	SDB	
							White Bow Tie (G. Sutton '07)	SDB	
							Again And Again (S. Innerst '99)	TB	
							Anxious (B. Hager '92)	TB	
							Autumn Circus (B. Hager '90)	TB	
							Autumn Thunder (G. Sutton '00)	TB	
							Autumn Tryst (J. Weiler '93)	TB	
							Blatant (M. Byers '90)	TB	
							Bolder Boulder (T. Magee '00)	TB	

My	Jn	Ju	Au	Se	Oc	No	Variety	Hybridizer	Class
							Bountiful Harvest (B. Hager '91)	TB	
							Broken Record (M. Sutton '05)	TB	
							Champagne Elegance (O.D. Niswonger '87) ..	TB	
							City Lights (M. Dunn '91)	TB	
							Clarence (L. Zurbrigg '91)	TB	
							Deja Blue (G. Sutton '01)	TB	
							Double Shot (G. Sutton '00)	TB	
							Double Stitch (G. Sutton '05)	TB	
							English Charm (B. Blyth '89/90)	TB	
							Fall Spotlight (W. Moores '92)	TB	
							Feed Back (B. Hager '83)	TB	
							Floorshow (M. Byers '89)	TB	
							Forever Gold (G. Sutton '97)	TB	
							Frequent Flyer (R. Gibson '94)	TB	
							Frost Echo (J.T. Aitken '95)	TB	
							Glitzzy (G. Sutton '01)	TB	
							Golden Immortal (G. Sutton '97)	TB	
							Halloween Halo (J. Weiler '91)	TB	
							Hemstitched (B. Hager '90)	TB	
							Innocent Star (G. Sutton '99)	TB	
							Istanbul (M. Byers '90)	TB	
							Lake Reprise (W. Moores '90)	TB	
							Lord Of Rings (G. Sutton '03)	TB	
							Midnight Thunder (M. Sutton '02)	TB	
							Misty Lady (G. Sides '94)	TB	
							Mother Earth (B. Hager '88)	TB	
							Mountain Sunrise (M. Sutton '07)	TB	
							Next In Line (G. Sutton '01)	TB	
							Olympic Return (G. Sutton '02)	TB	
							Olympic Rings (W. Moores '90)	TB	
							Punkin (K. Keppel '81)	TB	
							Pure As Gold (W. Maryott '93)	TB	
							Quantum Leap (G. Sutton '05)	TB	
							Raspberry Frost (G. Sutton '01)	TB	
							Return To Bayberry (M. Sutton '04)	TB	
							Rosalie Figge (J. McKnew '93)	TB	
							Soft Return (G. Sutton '04)	TB	
							Straight Up (M. Sutton '05)	TB	
							Summer Waltz (G. Sutton '02)	TB	
							Violet Returns (E. Hall '88)	TB	
							Zurich (M. Byers '90)	TB	

*Low Ho Silver' bloomed all 12 months

Invite a Friend to Join the Reblooming Iris Society



Mary Swann-Young

Rebloom Report, Indiana *By Mary Swann-Young*

I'm convinced that if I live to be a hundred, 2004 will prove to be the best year of rebloom I have ever seen. And I hope that this year will prove to be the worst I will ever experience.

Unseasonably warm weather in March, followed by five nights in a row of 17 degrees in mid-April, was particularly disastrous for reblooming varieties, which tend to bloom early and were at their most vulnerable. Then heat and drought set in at near record levels

which persisted until mid-October. Despite conditions, a surprising number of varieties appear on the list. Many only bloomed sparsely, late, and with reduced height, bud count, and branching.

This report includes rebloom in my personal garden near Indianapolis, Zone 5, as well as that of local friends and incidentals reported from extreme southwestern Indiana through all but the northern quarter of the state.

The following table lists irises alphabetically by class beginning with the medians.

Jn	Ju	Au	Se	Oc	No	Variety	Hybridizer	Class
						Autumn Wine (<i>V. Christopherson '03</i>)		BB
						Cameo Blush* (<i>J. Weiler '98</i>)		BB
						Headline Banner (<i>G. Sutton '99</i>)		BB
						October Splendor (<i>G. Sides '97</i>)		BB
						Champagne Encore* (<i>J.T. Aitken '97</i>)		IB
						Constant Companion* (<i>C. Marsh '95</i>)		IB
						Ever Cool (<i>J.T. Aitken '01</i>)		IB
						Fast Forward (<i>J.T. Aitken '02</i>)		IB
						Many Mahalos (<i>J.T. Aitken '03</i>)		IB
						Mariposa Wizard (<i>R. Tasco '04</i>)		IB
						Midsummer Night's Dream (<i>L. Baumunk '99</i>)		IB
						Precious Little Pink* (<i>M. Byers '95</i>)		IB
						Autumn Jester (<i>C. Chapman '00</i>)		SDB
						Baby Blessed* (<i>L. Zurbrigg '79</i>)		SDB
						Bowl Of Cherries (<i>L. Miller '02</i>)		SDB
						Forever Blue* (<i>C. Chapman '97</i>)		SDB
						Again And Again* (<i>S. Innerst '99</i>)		TB
						Amain* (<i>L. Zurbrigg '83</i>)		TB
						Autumn Circus* (<i>B. Hager '90</i>)		TB
						Autumn Grandeur (<i>B. Hager '93</i>)		TB
						Autumn Tryst* (<i>J. Weiler '93</i>)		TB
						Bernice's Legacy* (<i>B. Miller '00</i>)		TB

* denotes 75% of mature rhizomes bloomed

Jn	Ju	Au	Se	Oc	No	Variety	Hybridizer	Class
						Billionaire (<i>M. Byers '87</i>)		TB
						Blatant (<i>M. Byers '90</i>)		TB
						Daughter Of Stars* (<i>D. Spoon '01</i>)		TB
						Decker* (<i>M. Jameson '01</i>)		TB
						Double Shot (<i>G. Sutton '00</i>)		TB
						Earl Of Essex (<i>L. Zurbrigg '80</i>)		TB
						Feed Back (<i>B. Hager '83</i>)		TB
						Hemstitched (<i>B. Hager '90</i>)		TB
						Immortality (<i>L. Zurbrigg '82</i>)		TB
						Lady Essex (<i>L. Zurbrigg '91</i>)		TB
						Luminosity* (<i>M. Byers '91</i>)		TB
						Lunar Whitewash* (<i>S. Innerst '03</i>)		TB
						Mystery Blush (<i>G. Sides '99</i>)		TB
						Pink Attraction (<i>E. Hall '88</i>)		TB
						Priscilla Of Corinth (<i>B. Miller '94</i>)		TB
						Returning Chameleon (<i>B. Wilkerson '95</i>)		TB
						Rosalie Figge* (<i>J. McKnew '93</i>)		TB
						September Frost (<i>G. Sutton '98</i>)		TB
						Tenderly (<i>D.C. Nearpass '00</i>)		TB
						Total Recall (<i>B. Hager '92</i>)		TB
						Twilight Fancies* (<i>L. Zurbrigg '01</i>)		TB
						Violet Returns (<i>E. Hall '88</i>)		TB

Request for Guest Speakers

If any of our members who grow and/or hybridize reblooming irises would be willing to serve as guest speakers at AIS Region meetings, club meetings, etc., please contact Publicity Director, Shirley Trio:

E-mail: rprobst02@earthlink.net

Phone: (209) 551-6323

Address: 2701 Fine Ave., Modesto, CA 95355

The Reblooming Iris Society needs to expand its list of potential speakers.



Blatant TB
(*M. Byers '90*)

Photo Credits page 26:
George Sutton, *M. Sutton*

Photo Credits page 27:
Mary S.-Young, *A. Stanton*
Blatant, *C. Buchheim*



Platinum TB
(M. Byers by Dickey '94)



Pleasant Peasant TB
(T. Stanek '05)



Renown TB
(L. Zurbrigg '92)

Star Performers:

The above irises are three of thirteen cultivars that rebloomed for six months in Paul and Carole Buchheim's southern California garden.

Photo Credits page 28:

All Photos, C. Buchheim

Photo Credits Back Cover

Many Mahalos, T. Aitken

Reblooming Iris Resource List

AITKEN'S SALMON CREEK GARDEN

Terry & Barbara Aitken
608 NW 119th Street
Vancouver, WA 98685
e-mail: aitken@flowerfantasy.net
web site: www.flowerfantasy.net

8 MILE GROVE

Timothy Stanek
23329 Ellington Ave.
Glenwood, IA 51534
e-mail: Tjstanek@aol.com
(Send self addressed, stamped envelope for pricelist.)

MYSTIC LAKE GARDENS

Paul & Carole Buchheim
22177 Polley Street
Nuevo, CA 92567
e-mail: cbuchheim@verizon.net
web site: www.mysticlakegardens.com
(website soon to come)

SUPERSTITION IRIS GARDENS

Rick Tasco & Roger Duncan
2536 Old Highway (Dept. RIS)
Cathey's Valley, CA 95306-9708
phone: (209) 966-6277
e-mail: randrcv@sierratel.com
photo site: <http://community.webshots.com/user/rickt103>

SUTTON'S IRIS GARDENS

George & Margaret Sutton
Michael Sutton
16592 Road 208
Porterville, CA 93257
phone: 1-888-558-5107
e-mail: info@suttoniris.com
web site: www.suttoniris.com

WINTERBERRY GARDENS

Don & Ginny Spoon
1225 Reynolds Road
Cross Junction, VA 22625
e-mail: vspoon@aol.com
phone: (540) 888-4447
Catalog: \$5.00 (over 2000 varieties)

To add your listing to the Resource List, you must be an active member of the Reblooming Iris Society. The fee of \$10.00 per year should be sent to our treasurer, Margaret Sutton.

Join the Reblooming Iris Society

Single Annual \$ 7.00
Single Triennial \$18.00
Family Annual \$ 8.00
Family Triennial \$21.00

Note: Overseas members please add \$5.00 to the above rates to defray shipping.

You can also use PayPal to pay RIS dues when paying for AIS Membership.

Visit the RIS Web Site

www.rebloomingiris.com



Fountain Of Youth TB
(B. Hager by Cooley '03)

ADVERTISING RATES

Full Page \$50.00
Half Page \$30.00
Quarter Page \$15.00
Eighth Page \$10.00

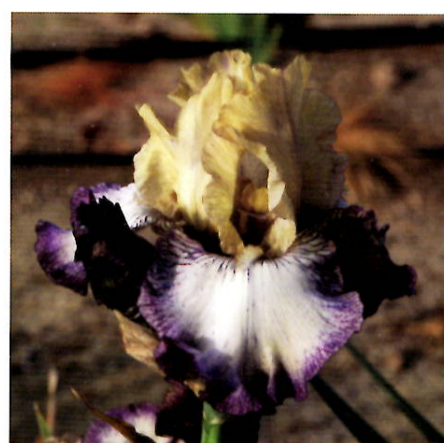
Note: Prices for black and white, limit one full page per issue



Hot Glow IB (*R. Tasco* '05)
See page 23



Over And Over TB (*S. Innerst* '01)
See page 22



Floorshow TB (*M. Byers* '89)
See page 26



Snow Melt TB (*M. Sutton* '04) See page 17



Bewitchment TB (*J. Ghio* '04) See page 25

All That Magic SDB
(*R. Tasco* '04)
See pages 23 & 25



Priscilla Of Corinth TB
(*B. Miller* '94) See pages 6, 25, & 27



Golden Immortal TB
(*G. Sutton* '97) See page 26

Photo Credits, Inside Back Cover:

Hot Glow, *C. Buchheim*
Over And Over, *C. Buchheim*
Floorshow, *C. Buchheim*
Snow Melt, *T. Aitken*
Bewitchment, *T. Aitken*
All That Magic, *T. Aitken*
Priscilla Of Corinth, *C. Buchheim*
Golden Immortal, *C. Buchheim*

Reblooming Iris Society
Carole Buchheim, Editor
27876 Vista Road
Romoland, CA 92585

Change Service Requested



Many Mahalos IB (*T. Aitken* '03)
See pages 17, 25, & 27

PRSRT STD
US POSTAGE
PAID
PERMIT NO. 580
MANHATTAN, KS

Dou & Ginny Spoon 11/01
1225 Reynolds Rd.
Cross Junction VA 22625-1726

