

WELCOME TO NEWARK
"Going East in 2016"



**The American Iris Society
National Convention**

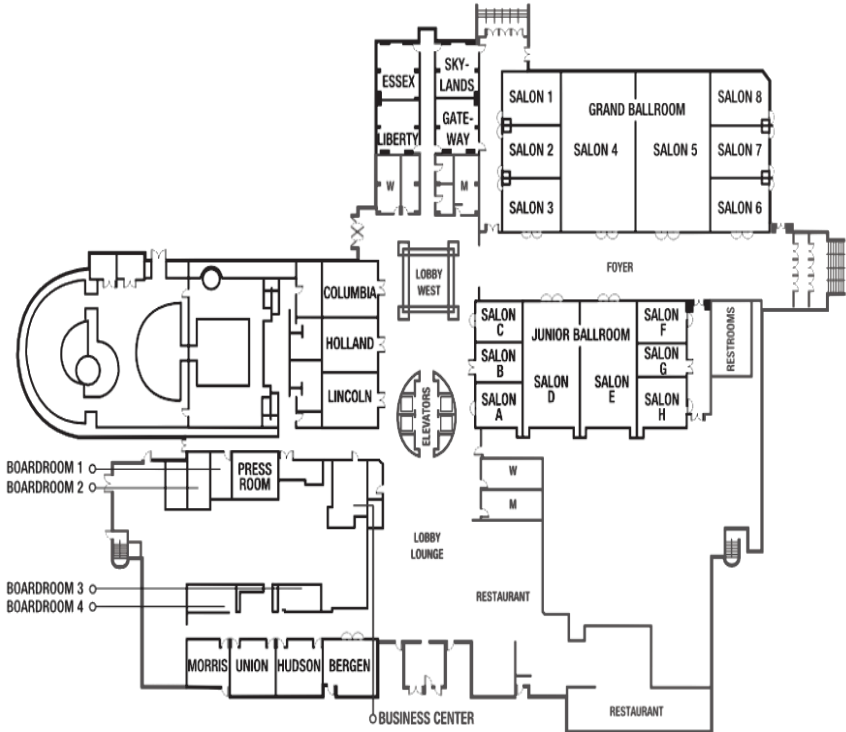
May 23 - 28 , 2016

Newark, New Jersey

Hosted by:

**The American Iris Society
Presby Memorial Iris Gardens
Essex County, NJ**

Airport Marriott Hotel Map





THE AMERICAN IRIS SOCIETY
National Convention
May 23 - 28, 2016
Newark, NJ

Hosted by:

The American Iris Society
Presby Memorial Iris Gardens
Essex County, NJ

Your Name _____

Address _____

Cell Phone # _____

Registration Number _____

Garden Tour Bus: Number _____ Color _____

If found, please return to the
AIS Convention Registration Booth
Newark Liberty International Airport Marriott Hotel, Newark NJ



A Quick Guide To Your Convention

This convention book is your guide to convention programs and garden tours. It contains the daily schedule of events with times and places of meetings.

NAME TAGS: Please wear your convention name tag at all times in the hotel, on the buses, and in the gardens. It serves as your ticket to all paid events and each day's lunch. Your meal tickets are in your registration packet with your name badge.

BALLOTS: Voting Ballots for the President's Cup, The Franklin Cook Memorial Cup, The Ben Hagar Cup, The Lloyd Zurbrigg - Clarence Mahan Award and Fifteen Favorite Iris are on the perforated pages at the back of this book (pages 89 and 91). Please complete them Saturday afternoon on your ride back to the hotel. Give them to your bus captain or deposit them before 4:00 pm at the Convention Registration Desk. Winners will be announced at the Saturday evening Awards Banquet.

GARDEN TOURS BUS ASSIGNMENT: Please select your bus assignment at the Registration Desk when you check into the Convention. You will be on the same bus for all three days of the convention.

GARDEN TOURS: Tours of the convention guest gardens will take place on Thursday, Friday, and Saturday. Buses will load outside the door close to the AIS Silent Auction rooms. See the Events Schedules on Pages 18, 19 and 20 for loading and departure times on Thursday, Friday and Saturday. Please board a bus displaying the color you selected when you checked into the convention and remain with that bus each day in order to see all the guest gardens.

IRIS REGIONS: In-Region irises are designated with a **RED DOT** on the garden marker. In-Region hybridizers and their cultivars are identified in this book in bold.

GUEST IRISES DESIGNATIONS: Reblooming irises are identified on the marker as such after the name of the cultivar. A named iris with no date in the Year column means that it is a named seedling.

SMOKING: Smoking is prohibited in the Airport Marriott Hotel, on the buses, and in the host gardens.

LOST AND FOUND: Items may be turned in or inquired about at the Convention Registration Desk.

Table of Contents

AIS Convention

Hotel Map	Inside Cover
A Quick Guide to Your Convention	3
Welcome to Newark, NJ	Paul W. Gossett 4
Welcome In Many Languages	George Boyce 5
Welcome to Essex County	Joseph N. DiVencenzo, Jr. 6
Welcome to Presby Memorial Iris Gardens	Nancy Skjei-Laws 8
Welcome to Region 3	George Hildenbrandt 9
Convention Committee and Region 3 Officers.....	10
American Iris Society Officers & Directors	11
Event Schedules	12
Meeting & Event Schedules	13
Bus Schedules	21
Guest Iris Hybridizers	24
Thank You	26
Contributors & Sponsors	26
Guest Iris Alphabetical Listing	27
Convention Gardens	49
Presby Memorial Iris Gardens	50
George Boyce's Glenara Gardens.....	67
George Hildebrandt Garden	75
Voting Ballots	89
President's Cup Ballot	
Franklin Cook Cup Ballot	
Ben Hager Cup Ballot	
Lloyd Zurbrigg-Clarence Mahon Award	
15 Favorite Iris Ballot	

Welcome to Newark, New Jersey

The American Iris Society, Presby Memorial Iris Gardens, and Essex County New Jersey are glad to be the host for the 2016 American Iris Society National Convention. I welcome you to Newark, New Jersey. We are making history here in Newark as this is the 1st convention sponsored by the American Iris Society. This will be the third convention held in Newark, New Jersey. The two previous conventions were in 1961 and 1966.

I would like to first say THANK YOU to the hybridizers who have sent the 2016 Guest Plant Committee 1800+ guest plants, 886 varieties, sent by 99 hybridizers.

Attendees will have the opportunity to tour 3 beautiful gardens for three days. Presby Memorial Iris Gardens will be visited all day on Thursday, May 26, 2016 and one-half day on the morning of Saturday, May 28, 2016. On Friday, May 27, 2016 you will tour 2 beautiful gardens in eastern Pennsylvania one in Palmerton (Glenara Gardens of George & Carol Boyce) and one in Slatington (George Hildenbrant Garden).

There will also be an Optional Tour available for attendees on Tuesday, May 24, 2016 to go to Philadelphia, PA on the "Land of The Free" Tour.

The "Go East in 2016" Convention Committee members and the three garden owners have all worked hard to make your stay a very comfortable and exciting time while you are here. We hope you will enjoy our gardens, will make new friends as well as see your long time friends. Enjoy your stay here in Newark and see what you can discover while you are here.

Thank you,

Paul W. Gossett

Paul W. Gossett
2016 AIS Convention Co-Chair

Welcome!

Bienvenue!

Bienvenidos!

Wilkommen!

Ga'day Ga'day!

It is so good to have you with us. A large volunteer group in New Jersey together with a small group of dedicated individuals in Pennsylvania and many AIS members across the nation have labored for many years to bring you this 2016 National Convention.

Please relax, enjoy two of the original 13 Colonies, the Megalopolis of New York City to Philadelphia, and the picturesque lakes, rivers and topography that is Mid-Atlantic USA.

Wonderful days of seminars, different affiliate programs, and camaraderie await you. One of my fondest experiences at conventions is the making of new friends from around the world. So greet and mingle! We all have so much in common centered in our love of Irises.

When you visit our home and our Glenara Gardens, please stop and talk with Carol and me. Let's all make new friends and memories.

We look forward to seeing you soon,

George Boyce
2016 AIS Convention Co-Chair



OFFICE OF THE COUNTY EXECUTIVE

Hall of Records, Room 405, Newark, New Jersey 07102

973.621.4400 --- 973.621.6343 (Fax)

www.essexcountynj.org

Joseph N. DiVincenzo, Jr.

Essex County Executive



May 2016

Dear Friends:

Welcome to the *Essex County Presby Memorial Iris Gardens*! We are pleased to host this year's American Iris Society Convention and show off our spectacular array of blossoms.

For 89 years, the *Presby Memorial Iris Gardens* have delighted visitors with the breath-taking palette of colors that bloom every spring and fall. The gardens boast over 10,000 irises of about 1,500 varieties, proudly owning its beautiful nickname, "*The Rainbow on the Hill.*"

In early the 2000s, financial trouble made the future uncertain for the Gardens, but a serendipitous partnership between the Gardens, Essex County, the NJ Green Acres program and the Township of Montclair emerged in 2009. At that time, Essex County preserved the Iris Gardens by adding the 7.5-acre site to its Parks System. Fortunately, Essex County, despite being one of the most densely populated areas in the country, has a tremendously rich history of parks and open spaces, and adding the Iris Gardens to our roster was a perfect fit.

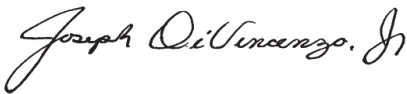
The *Presby Memorial Iris Gardens* were created in 1927 to fulfill a dream of the late Frank H. Presby to share his love of irises with the general public. Unfortunately, he passed away before his

dream came to fruition, but we are sure Mr. Presby, who also was one of the founders of the AIS, would be proud that this year's convention is being hosted by Essex County.

Our Historic Parks System, with over 6,000 acres of reservations, playgrounds and walking trails, was the first county parks system created in the United States and was designed by the Olmstead firm. In addition to the Gardens, we feature a Rose Garden, and a Cherry Blossom display in Essex County Branch Brook Park that boasts 5,000 trees. It is the most diverse collection in the country and is larger than the national display in our nation's capital. Another "first" is the Essex County Weequahic Golf Course, which opened the doors to golf as the first public course in New Jersey.

We hope you enjoy your visit and have an opportunity to experience all the charm, flavor and excitement Essex County has to offer. Together we will continue *Putting Essex County and Our Presby Memorial Iris Gardens First*.

Sincerely,

A handwritten signature in cursive script that reads "Joseph DiVincenzo, Jr." The signature is written in black ink and is positioned below the word "Sincerely,".

Joseph N. DiVincenzo, Jr.
Essex County Executive

Presby Memorial Iris Gardens Welcome

Welcome to the East Coast! I am so privileged and honored to welcome The American Iris Society, its subchapters and all people affiliated with this historic organization. The Essex County Presby Memorial Iris Gardens is extremely proud to host this year's 2016 convention.

It is extremely rewarding, after working for years to develop an internationally recognized garden. All 886 guest irises from 99 hybridizers were planted in the summer of 2014 and have been meticulously cared for by the professional staff of gardeners at the Essex County Presby Memorial Iris Gardens.

The garden was established in 1927 to honor Frank H. Presby of Montclair, a leading horticulturalist and a founder of The American Iris Society. Our gardens showcase over 100,000 blooms during the month of May. The Essex County Presby Memorial Iris Gardens, often is referred to as "The Rainbow on the Hill" due to the arching slope of the garden beds and the beautiful colors, and is located at the base of the 7 Y2 acres Mountainside Park. This public garden is one of the largest collections of Irises in the world, located just 12 miles west of New York City and amid the glorious Mills Reservation.

In the early 2000s, financial trouble made the future uncertain for the our Garden, but thankfully a partnership between the Gardens, Essex County, The NJ Green Acres program and the Township Of Montclair emerged in 2009 which has preserved this living museum. I personally am so Thankful for the partnership we have with Essex County and having the support of our Essex County Executive Joseph N. DiVincenzo, Jr. Our garden has been preserved and is a spectacular site to visit.

I am so honored to host the 2016 American Iris Society Convention I hope all my fellow Irisarian's enjoy visiting our beautiful garden known as " The Rainbow on the Hill". Looking forward to seeing you in May.

Nancy Skjei-Laws
Director
Presby Memorial Iris Gardens

Welcome to Region 3

On behalf of Region 3 It is my pleasure to welcome the 2016 American Iris Society Convention to Newark. We hope you enjoy your stay in the East. We are most appreciative of Presby Memorial Iris Gardens, Essex County New Jersey and the AIS for bringing this year's convention to Newark.

You have a real treat in store with your tour of Presby Gardens' extraordinary collection of bearded irises plus the full set of convention guests. The Friday trip to Pennsylvania will be a real change of scene taking you into the rural reaches of the Lehigh river-valley. You will visit two gardens (Glenara and Hildenbrandt's) which are 8 miles apart on opposite sides of the river and opposite sides of the Kittatiny ridge through which it cuts a water gap. Each of the PA gardens hosts about half of the bearded guests plus extensive private collections.

Finally I encourage you to take the optional tour on Tuesday to Philadelphia to experience the birthplace of the nation and tour the Morris arboretum to see just how big trees are in *Pennsylvania*.

George Hildenbrandt
Region 3 RVP

AIS National Convention Committee

Chairperson	Paul W. Gossett
Co-chair	George Boyce
Treasurer	Jill Bonino
AIS Convention Liaison	Paul W. Gossett
AIS Silent Auction	Debbie Strauss / Nick Stewart
Ballot Counting	Dell Perry
Banquets	Paul W. Gossett
Banquet Table Arrangements	Svetlana McCoy
Boutique	2016 Convention Committee / Jill Bonino
Bus Captains	Jill Bonino
Bus Prizes	Paul W. Gossett
Convention Awards	Gerry Snyder & Paul W. Gossett
Convention Book	Judy Keisling
Convention Gardens	
Presby Memorial Iris Gardens	Nancy Skjei-Laws
Glenara Gardens	George & Carol Boyce
Hildenbrandt's Iris Garden	George Hildenbrandt
Convention Web Master	Tim Valenzeula
Garden Refreshments & Lunch Meals	George Boyce & Nancy Skjei-Laws
Garden Refreshments	Region 3
Geek Dinner	Joanne Prass-Jones & John I. Jones
Guest Irises	Dennis Hillerud & Bucky Schnarr (Presby)
Hotel	Paul W. Gossett & Andi Rivarola
Judges' Training	Riley Probst & Shirley Trio-Probst
Optional Tours	George Boyce
Porta Potties	George Boyce
Program & Meeting	Paul W. Gossett & Andi Rivarola
Promotion Brochure	Joshua Winzer
Registrar	Ken Fuchs
Tour Gardens	George Boyce
Transportation	Jill Bonino

Region 3 Officers

Regional Vice President	George Hildenbrandt
Assistant Regional Vice President	Cathy Button
Corresponding Secretary	Joan Wood
Recording Secretary	Svetlana McCoy-Rusanova
Treasurer	Jay Holcomb

The American Iris Society

The American Iris Society is a nonprofit institution incorporated February 2, 1927 in the County of Philadelphia, State of Pennsylvania. By the terms of the Charter, the Corporation has no stockholders and exists for the sole purpose of promoting the culture and improvement of iris.

Officers

President	Gary White
First Vice President	Jody Nolin
Second Vice President	Andi Rivarola
Secretary	Michelle Snyder
Treasurer	Dwayne Booth
Immediate Past President	Jim Morris

Administrative Officers

Registrar/Recorder	John Jones and Joanne Prass-Jones
Membership Secretary	Tom Gormley
Recording Secretary	Susan Boyce
Publications Sales Director	John and Kay Ludi

Directors

<u>Past Presidents:</u>	Ronald Mullin, James Rasmussen, Dave Niswonger, Terry Aitken, Jeanne Clay Plank, Judy Keisling
<u>Terms Expiring in 2016:</u>	George Boyce, Gordon Carver, Susan Grigg, Debra Strauss
<u>Terms Expiring in 2017:</u>	Susan Boyce, John Jones, John Ludi, Gerry Snyder
<u>Terms Expiring in 2018:</u>	Ron Cosner, Alverton Elliott, Bob Pries, Lois Rose
<u>RVP Representative:</u>	Howard Dash (RVP, Region 23)

Event Schedules

Registration Hours

The Convention Registration Desk is located in **Salon A** of the Newark Liberty International Airport Marriott Hotel.

Monday, May 23	10:00 am - 5:00 pm
Tuesday, May 24	9:00 am - 6:00 pm
Wednesday, May 25	9:00 am - 6:00 pm
Thursday, May 26	8:30 am - 9:00 am
Friday, May 27	6:30 am - 7:00 am
Saturday, May 28	8:00 am - 8:30 am 5:45 pm - 6:15 pm

Boutique Hours

The Iris Boutique, featuring gifts and souvenirs, is located in **Salon C** of the Newark Liberty International Airport Marriott Hotel.

Wednesday, May 25	1:00 pm - 5:00 pm 9:00 pm - 10:00 pm
Thursday, May 26	6:30 pm - 10:00 pm
Friday, May 27	6:30 pm - 8:00 pm

AIS Silent Auction Hours

The AIS Silent Auction items are on display in the **Lincoln/Holland/Columbia** Room of the Newark Liberty International Airport Marriott Hotel.

Tuesday, May 24	6:00 pm - 10:00 pm
Wednesday, May 25	12:00 pm - 6:00 pm 9:00 pm - 10:00 pm
Thursday, May 26	6:00 pm - 10:00 pm Bids close at 10:00 pm

All money for Winning Bids must be paid between 6:30 and 8:30 pm on Friday.

AIS Storefront Hours

The AIS Storefront items are on display in **Salon B** of the Newark Liberty International Airport Marriott Hotel.

Tuesday, May 24	5:30 pm - 8:00 pm
Wednesday, May 25	8:00 am - 4:00 pm
Thursday, May 25	6:00 pm - 8:00 pm



MEETING & EVENT SCHEDULES

Meeting & Event Schedules

<u>Monday, May 23, 2016</u>		
Time	Event	Location
8:00 am - 10:00 pm	AIS Silent Auction (Set-Up)	Lincoln/Holland Columbia
10:00 am - 5:00 pm	Registration	Salon A
1:00 pm - 10:00 pm	AIS Board of Directors Meeting (Break 5:00 pm – 7:00 pm Dinner)	Salon D

NOTES:

Meeting & Event Schedules

Tuesday, May 24, 2016

Time	Event	Location
7:30 am - 4:00 pm	Optional Tour Buses Load at 7:00am	
8:00 am - 6:00 pm	AIS Silent Auction (Set-Up)	Lincoln/Holland Columbia
9:00 am - 10:00 am	Median Iris Society Board Meeting	Salon D
9:00 am - 6:00 pm	Registration	Salon A
10:00 am - 11:00 am	SIGNA Board Meeting	Union
12:00 pm - 2:00 pm	Reblooming Iris Society Board Meeting	Bergen
5:00 pm - 6:30 pm	AIS Foundation Meeting	Salon D
5:30 am - 7:30 pm	RVP Board of Counselors Reception & Meeting (All RVPs)	Salons F - H
5:30 am - 8:00 pm	AIS Storefront Open	Salon B
6:00 pm - 10:00 pm	AIS Silent Auction Opens	Lincoln/Holland Columbia
8:00 pm - 9:00 pm	AIS Section & Cooperating Society Meeting	Bergen
9:15 pm - 11:15 pm	AIS Board of Directors Meeting	Salon D

Meeting & Event Schedules

<u>Wednesday, May 25, 2016</u>		
Time	Event	Location
8:00 am - 9:00 am	Reblooming Iris Society Program <i>Breeding Trends For Cool Season Bearded Reblooming Irises</i> by Mike Locketell	Salon D
8:00 am - 4:00 pm	AIS Storefront Open	Salon B
9:00 am - 12:00 pm	AIS Boutique Setup	Salon C
9:00 am - 10:00 am	AIS News: Marketing and PR Committee Moderator: Andi Rivarola	Salon E
9:00 am - 6:00 pm	Registration	Salon A
10:00 am - 11:00 am	Welcome For First Time Attendees by Gary White	Bergen
10:00 am - 11:00 am	AIS Affiliated Societies Meeting	Salons F - H
10:00 am - 11:00 am	Median Iris Society Program <i>Adventures in Hybridizing</i> by Chuck Bunnell	Salon D
12:00 pm - 1:00 pm	Spuria Iris Society Program Species Spuria Irises Plus Future of Spurias by Andi Rivarola	Salon E
12:00 pm - 6:00 pm	AIS Silent Auction Open	Lincoln/Holland Columbia

Meeting & Event Schedules

<u>Wednesday, May 25, 2016</u>		
Time	Event	Location
1:00 pm - 2:00 pm	HIPS Program <i>Guardian Gardens</i> by Douglass Paschall	Salon D
1:00 pm - 5:00 pm	Boutique Open	Salon C
2:00 pm - 3:00 pm	Society for Japanese Iris Program <i>Iris ensata 101, A Beginners Guide</i> by Chad Harris	Salon E
3:00 pm - 4:00 pm	Novelty Iris Program <i>Monty Byers and His Contributions to the Novelty Iris World</i> by Bonnie Nichols	Salon D
4:00 pm - 5:00 pm	Society For Louisiana Irises Program <i>Louisiana's Busting Out All Over</i> by Joe Mussachia	Salon E
4:30 pm - 6:30 pm	Bus Captain's Meeting	Morris
5:00 pm - 6:00 pm	Iris Encyclopedia Workshop	Salon D
5:30 pm - 6:30 pm	Youth Reception	PDR Aviation Grill
6:00 pm - 7:00 pm	No Host Reception-Cash Bar	Salons 1 - 3
7:00 pm - 9:00 pm	Welcome Reception	Salon 4
9:00 pm - 10:00 pm	AIS Silent Auction Open	Lincoln/Holland Columbia
9:00 pm - 10:00 pm	AIS Boutique Open	Salon C

Meeting & Event Schedules

<u>Thursday, May 26, 2016</u>		
Time	Event	Location
8:30 am - 9:00 am	Registration	Salon A
9:00 am - 4:00 pm	Garden Tours (Buses Load at 8:30 am)	
4:30 pm - 5:30 pm	Bus Captain's Meeting	Morris
4:30 pm - 5:30 pm	Aril Society International Program	Salon E
4:30 pm - 5:30 pm	Society for Siberian Irises Board Meeting	Salon F - H
5:30 pm - 6:30 pm	Society for Siberian Irises Program <i>From the gleam in the eye to the proud parent - the story of a Siberian cross by Robert Hollingworth</i>	Salon F - H
5:30 pm - 6:30 pm	Tall Bearded Iris Society Board Meeting	Salon D
6:00 pm - 7:30 pm	Youth Pizza Party	PDR Aviation Grill
6:00 pm - 8:00 pm	AIS Storefront Open	Salon B
6:00 pm - 10:00 pm	AIS Silent Auction (Bids Close at 10:00 pm)	Lincoln/Holland Columbia
6:30 pm - 7:30 pm	Tall Bearded Iris Society Program	Salon D
6:30 pm - 10:00 pm	AIS Boutique Open	Salon C
8:00 pm - 9:30 pm	Judge's Training <i>Novelty Irises</i> by Bonnie Nichols	Salon E

Meeting & Event Schedules

<u>Friday, May 27, 2016</u>		
Time	Event	Location
6:30 am - 7:00 am	Registration	Salon A
7:00 am	AIS Silent Auction Winning Bids Posted	
7:30 am - 5:00 pm	Garden Tours (Buses Load at 7:00 am)	
5:30 pm - 6:30 pm	Bus Captain's Meeting	Morris
6:00 pm - 8:30 pm	Geek Dinner & Auction	Salons D - E
6:30 pm - 8:00 pm	AIS Boutique Open	Salon C
6:30 pm - 8:30 pm	AIS Silent Auction (All money for winning bids must be turned in)	Lincoln/Holland Columbia
8:45 pm - 10:15pm	Judge's Training <i>Ethics</i> by Jean Morris	Salons F - H
9:00 pm - 10:30 pm	Past, Present, Future Convention Chairpersons Meeting	Bergen

Meeting & Event Schedules

<u>Saturday, May 28, 2016</u>		
Time	Event	Location
8:00 am - 8:30 am	Registration	Salon A
8:30 am - 12:30 pm	Garden Tours (Buses Load at 8:00 am) Lunch on Your Own After Returning to Hotel	
1:00 pm - 2:00 pm	Bus Captain's Meeting	Morris
2:30 pm - 3:30 pm	Dwarf Iris Society Program <i>Gardening with Dwarf Iris</i> by Rose Kinnard and Lyn Wilson	Salon E
3:45 pm - 4:45 pm	SIGNA Program <i>Germinating Iris Seeds</i> by Jan Sacks and Marty Schafer	Salon D
4:00 pm	Deadline for Ballots	
5:45 pm - 6:15 pm	Registration	Salon A
6:00 pm - 7:00 pm	No Host Reception-Cash Bar	Junior Ballroom
7:00 pm	Awards Banquet	Junior Ballroom

Bus Schedules

Thursday, May 26, 2016

#1 & 2 - BLUE BUSES

#3 & 4 - GREEN BUSES

#5 - YELLOW BUS

8:00am	8:30am	Load buses
8:30am	9:30am	Drive to Presby Memorial Iris Gardens
9:30am	3:00pm	Tour Presby Memorial Iris Gardens
		While at Presby, there will be:
		1 Hour in-garden judges' training
		1 Hour lunch
		1 Hour Photography session by Paul Black
3:00pm	3:15am	Load buses
3:15pm	4:00	Drive back to hotel



Bus Schedules

Friday, May 27, 2016

#1 & 2 - BLUE BUSES

AND

#5 - YELLOW BUS

7:00am	7:30am	Load Buses
7:30am	9:15am	Drive to Glenara Iris Garden
9:15am	11:30am	Glenara Iris Garden
11:30am	11:45am	Drive to Blue Shamrock Country Club
11:45am	12:30pm	Lunch at Blue Shamrock Country Club
12:30pm	1:00pm	Drive to Hildenbrandt Garden
1:00pm	3:00pm	Hildenbrandt Garden
3:00pm	3:15pm	Load Buses
3:15pm	5:00pm	Drive back to hotel

#3 & 4 - GREEN BUSES

7:00am	7:30am	Load Buses
7:30am	9:30am	Drive to Hildenbrandt Garden
9:30am	12:00pm	Hildenbrandt Garden
12:00pm	12:30pm	Drive to Blue Shamrock Country Club
12:30am	1:15pm	Lunch at Blue Shamrock Country Club
1:15pm	1:30pm	Drive to Glenara Iris Garden
1:30pm	3:30pm	Glenara Iris Garden
3:30pm	3:45pm	Load Buses
3:45pm	5:00pm	Drive back to hotel

Bus Schedules

Saturday, May 28, 2016

#1 & 2 - BLUE BUSES

#3 & 4 - GREEN BUSES

#5 - YELLOW BUS

8:00am	8:30am	Load buses
8:30am	9:00am	Drive to Presby Memorial Iris Gardens
9:00am	12:00pm	Tour Presby Memorial Iris Gardens
12:00pm	12:15am	Load buses
12:15pm	1:00pm	Drive back to hotel



Guest Iris Hybridizers

AITKEN, Terry: 608 NW 119 St., Vancouver, WA 98685
ANNAND, Robert (Deceased): Rob Marshall, P.O. Box 475, Forest Ranch, CA 95942
BAUER, Cynthia: 4232 NE Royal Ct., Portland, OR 97213
BAUMUNK, Lowell: 10918 N. Sunshine Dr., Littleton, CO 80125
BERSILLON, Michele: c/o Hugh Stout, 432 NE 70 Street, Oklahoma City, OK 73105
BLACK, Paul: P O Box 9008, Salem, OR 97305
BORGLUM, Sylvia: 202 Austin Rd., Geneva, NY 14456
BUNNELL, Charles A.: 7941 Peshewa Drive, Lafayette, IN 47905
BURSEEN, Tom: 1513 Ernie Lane, Grand Prairie, TX 75052
BURTON, Lucy: 188 Sagamore St., South Hamilton, MA 01982
BUSHNELL, Howard *: 5 Cary Circle, Burlington, NJ 08550
BUTLER, Brett *: 733 Olive St., Florence, NJ 08518
Chancellor/Rust: Cindy Rust, 2016 Meadow Lane, Union, MO 63084
CHAPMAN, Chuck: RR #1 8790 WR 124, Guelph, ON N1H 6H7, Canada
COLE, Dean: 21 C Great Falls, Rd., Gorham, ME 04038
COPELAND, Jill & Jim, 78118 M-40, Lawton, MI 49065
CROSS, Mel: 11320 Durgin Rd. SE, Olympia, WA 98513
CRUMP, J. Griffin: 8924 Battery Rd., Alexandria, VA 22308
DAILEY, Shaun: 631 Westowne Ave., Waukesha, WI 53118
DASH, Howard: 1534 Arco de Goya, Las Cruces, NM 88007
DEATON, Cheryl: 27218 Walnut Springs Ave., Canyon Country, CA 91351
DUNCAN, Roger : 2536 Old Highway, Cathey's Valley, CA 95306
DUNLOP, Jeff: 24 Basin Rd., No Windham, ME 04062
EDWARDS, Francelle: 5017 W. Banff Ln., Glendale, AZ 85306
FAN, Chun *: 14 Chestnut Dr., East Windsor, NJ 08520
FILARDI, Bruce: 4244 NE Royal Court, Portland, OR 97213
FISHER, Ken: c/o Aitken, 608 NW 119 St.. Vancouver, WA 98685
FOSS, Craig: c/o Bruce Filardi, 4244 NE Royal Court, Portland, OR 97213
GHIO, Joseph J.: 1201 Bay Street, Santa Cruz, CA 95060
HARRIS, Chad: P.O. Box 346, Washougal, WA 98671
HEADRICK, David: c/o His Iris Garden, 2669 Seal Ct., Merced, Ca 95340
HEDGECOCK, Jim and Lamoyne: 12421 SE State Rt 116, Gower, MO 64454
HELSLEY, Calvin: P.O. Box 306, Mansfield, MO 65704
HILL, Paul: 791 Briar Park Ct., Atlanta, GA 30306
HILTON, George *: 146 Julia Avenue, Hamilton Avenue, 08610
HINGISS, Barry: 2406 Northview Road, Waukesha, WI 53188
HOLLINGWORTH, Robert: 125 E. Sherwood Rd., Williamston, MI 48895
JAMESON, Mitch: 1511 Boyd, St. Joseph, MO 64505
JOHNSON, Ben: 715 W Stanford St., Springfield MO 65807
JOHNSON, Thomas: P O Box 9058, Brooks, OR 97305
KANAROWSKI, Douglas, 6147 Smither Road, Mariposa, CA 95338
KASPEREK, Brad: 9130 N. 5200 W., Elwood, UT 84337
KELLY, Steve: 4790 Calle de Nubes, Las Cruces, NM 88012
KEPPEL, Keith: P O Box 18154. Salem, OR 97305
KERR, Fred: P O Box 2191, North Highlands, CA 95660
LANDERS, Jim: 710 N. 11th St., Temple, TX 76501

Guest Iris Hybridizers

LAUER, Larry: P O Box 183, Independence, OR 97351
LOCKATELL, P. Michael, 500 Pantela Drive, Richmond, VA 23235
MANN, Linda: 1295 Laurel Bluff Rd., Kingston, TN 37763
MARKHAM, Lynn: 608 NW 119 St., Vancouver, WA 98685
MARKHAM, Stephanie: 22 Lawrence St., Norfolk, MA 02056
MILLER, David: 14425 W. 48th Ave., Golden, CO 80403
MILLER, Lynda: 27452 S. Gribble Rd., Camby, OR 97013
MULLIN, Ronald: c/o Stout, 432 NE 70 Street, Oklahoma City, OK 73105
MURPHY, Don: c/o Jim Hedgecock, 12421 SE State Rt 116, Gower, MO 64454
MUSACCHIA, Joseph, 509 Linda Ann Ave., Gray, LA 70359
NICHOLS, Hooker T. & Bonnie J.: 3365 Northaven Road, Dallas, TX 75229
NISWONGER, Dave: 822 Rodney Vista Blvd., Cape Girardeau, MO 63701
PAINTER, John & Lesley: 9087 Steele Canyon Rd. Napa, CA 94558
PLAYTIS, Anthony: 15 Eton Ct. Washington, WV 26181
PRICE, Nancy: 32009 S. Ona Way, Molalla, OR 97038
PYBURN, Alton R.: 109 CR 371, Sweetwater, TX 79556
ROHR, Kendal: P.O. Box 225, Canton, KS 67428
ROWLAN, H. by J. Hedgecock: 12421 SE State Rt 116, Gower, MO 64454
SCHAFFER/SACKS: 337 Acton St., Carlisle, MA 01741
SCHREINER'S IRIS GARDENS: 3625 Quinaby Rd. N.E., Salem, OR 97303
SCHUTTE, Barbara: 302 Parkwood Ct., Columbia, MO 65203
SILVERS, Thomas: 20324 Townsend St., Rohrersville, MD 21779
SMITH, Marky: 608 NW 119 St. Vancouver, WA 98685
SPOON, Bryan: 1225 Reynolds Road, Cross Junction, VA 22625
SPOON, Don & Ginny: 1225 Reynolds Road, Cross Junction, VA 22625
STOUT, Hugh Jr., 432 NE 70 Street, Oklahoma City, OK 73105
STROHMAN, Robert L.: 1830 Alfresco Pl., Louisville KY 40205
SUTTON, Andrew: P.O. Box 790, Star, ID 83669
SUTTON, George (deceased): P.O. Box 790, Star, ID 83669
SUTTON, Michael: P.O. Box 790, Star, ID 83669
TASCO, Richard: 2536 Old Highway, Cathey's Valley, CA 95306
VAN HOOK, John: 2210 Piney Grove Rd., Somerset, Kentucky 42501
VAN LIERE, Robert: 2700 W Amherst Ave., Denver, CO 80236
VARNER, Terry: 148 Alta St., Marietta, OH 45750
VAUGHN, Kevin: 4358 River Road South, Salem, OR 97302
WENDEL, Brian: 5930N 600E, Craigville, IN 46731
WEST, Kat: 3741 SE Mill St., Portland, OR 97214
WHITE, John (deceased): Sharon Whitney, 1709 Harpswell Neck Rd, Harpswell, Me 04079
WILKERSON, Betty: 3057 Mitchell Weaver Rd., Scottsville, KY 42164
WITT, Jean: 816 S 216th St. #413, Des Moines WA 98198
WOREL, Jack: 10930 Holly Lane, Osseo, Minnesota 55369
WYSS, Betty (deceased) by Kelly Norris 1101 25th Street, #9, Des Moines, IA 50311
ZURBRIGG, Lloyd: (deceased), Durham, CA

THANK YOU . . .

To all of the hybridizers who have so generously given their introductions for bus prizes, thank you so very much for your cooperation and generosity in this endeavor. Thank you All.

AIS Region 3

Presby Memorial Iris Gardens

Terry & Barbara Aitken of Salmon Creek Gardens

Hooker & Bonnie Nichols of Hillcrest Iris Gardens

Schreiner's Gardens

Don & Ginny Spoon of Winterberry Gardens

Hugh Stout of Stout Gardens at Dancingtree

Mike Sutton of Suttons Iris Gardens

Rick Tasco & Roger Duncan of Superstition Gardens

John Coble & Bob Bauer of Ensata Gardens

Macey & Greg McCullough of Iris City Gardens

Jan Sacks & Marty Schafer of Joe Pye Weed's Garden

MJ Urist of Louisiana Iris Gardens

Riley and Shirley Probst-Trio of Fleur de Lis Gardens

Contributors & Sponsors

AIS Region 3

American Iris Society

Tulsa Area Iris Society



GUEST IRIS

ALPHABETICAL LISTING



Alphabetical Cultivar Listing

Name	Hybridizer	Type	Year	Garden
00P11B16	Hollingworth, R.	SIB		1,2,3
01-10A	Markham, S.	TB		1,2
0467	Kanarowski, D.	TB		1,3
04M9A10	Hollingworth, R.	SIB		1,2,3
04M9B1	Hollingworth, R.	SIB		1,2,3
0913	Worel, Jack	TB		1,2
0930	Worel, Jack	TB		1,3
07-01-01	Musacchia, J.	LA		1,3
072021	Crump, J. G.	TB		1
072022	Crump, J. G.	TB		1
06-02A	Markham, S.	TB		1,2
06-034-1	Kerr, F.	TB		1,2
06-078A	Kerr, F.	TB		1,3
06-37B	Markham, S.	MTB		1,2
06-38A	Markham, S.	MTB		1,3
06-555-1	Chapman, C.	TB		1,3
06-B79-1	Chapman, C.	TB		1,2
07-65A	Markham, S.	MTB		1,2
07LAL2	Harris, C.	SPEC		1,2,3
07W4A2	Hollingworth, R.	SIB		1,2,3
08-032-1	Chapman, C.	BB		1,2
082L13	Crump, J. G.	TB		1,3
08-82A	Markham, S.	TB		1,3
08B1A17	Hollingworth, R.	SIB		1,2,3
08Z1	Crump, J. G.	TB		1,2
09-118A	Markham, S.	TB		1,2
092M3	Crump, J. G.	TB		1
10/12-259-1	Pyburn, A.	TB		1,2
10-233-1	Pyburn, A.	TB		1,3
10K1	Crump, J. G.	TB		1
10K8B3	Hollingworth, R.	SIB		1,2,3
12M26	Nichols, H.	TB		1,2
12M70	Nichols, H.	TB		1,3
16-18	Nichols, H.	TB		1,2
1631-82 A	Edwards, F.	TB		1,3
18-55	Nichols, B.J.	TB		1,3
18-66	Nichols, H.	TB		1,2
18-76	Nichols, H.	TB		1,2
18-78	Nichols, H.	TB		1,3
19-14	Nichols, H.	TB		1,3
19-2	Nichols, H.	TB		1,2
19-48	Nichols, H.	TB		1,2
19-62	Nichols, H.	TB		1,3
19-76	Nichols, H.	TB		1,3
19-82	Nichols, H.	TB		1,2
19-90	Nichols, H.	TB		1,3
2010-DD	Nichols, B.J.	TB		1,3

Host Gardens: 1 = Presby 2 = Glenara 3 = Hildenbrandt

Alphabetical Cultivar Listing

Name	Hybridizer	Type	Year	Garden
2010-G	Nichols, H.	TB		1,2
2010-JJJ	Nichols, H.	TB		1,2
2010-KK	Nichols, H.	TB		1,2
2010-SSS	Nichols, H.	TB		1,3
2011-46	Nichols, H.	TB		1,3
2011-49	Nichols, B.J.	TB		1,2
2011-51	Nichols, H.	TB		1,3
2013-1	Nichols, B.J.	TB		1,3
20	Borglum, S.	SPEC-X		1,3
20734	Lockatell, M.	TB		1,3
20916	Lockatell, M.	TB		1
21013A Sept Re	Lockatell, M.	TB		1
21026-1Re	Lockatell, M.	TB		1
21026-2Re	Lockatell, M.	TB		1,2
27-07-11	Pyburn, A.	TB		1,3
31-1	Playtis, A.	SDB		1,3
5-902L	Kasperek, B.	TB		1,2
7625-5766 E	Edwards, F.	TB		1,3
7625-5766 H	Edwards, F.	TB		1,2
777	Borglum, S.	SIB		1,3
A Grape Fit	Schreiner's	TB		1,3
A05	Butler, B.	TB		1,3
A06	Butler, B.	TB		1, 2
A17C	Butler, B.	TB		1, 2
Absolute Crush	Schreiner's	TB		1, 2
Absolute Star	Schreiner's	TB	2013	1, 3
Absolute Zero	Black, P.	TB	2012	1,3
Act Surprised	Black, P.	TB	2010	1,2
Action Packed	Black, P.	TB	2011	1,2
Adazzle	Varner, T.	MTB	2013	1,2
ADG 11-02-07	Dash, H.	TB		1,3
ADG 11-02-10	Dash, H.	TB		1,3
ADG 11-04-12	Dash, H.	TB		1,2
ADG 11-05-02	Dash, H.	TB		1,2
Adventurous	Sutton, M.	TB	2010	1,3
Aello	Miller, L.	TB	2014	1,3
Aeolius	Smith, M.	IB	2012	1,3
After Party	Hedgecock, L.	TB	2013	1,3
After the Rain	Black, P.	TB	2013	1,3
Afterlife	Smith, M.	TB	2012	1,2
Alabaster Lace	Aitken, T.	TB	2015	1,3
Alessandra's Gift	Spoon, B.	TB	2011	1,3
All Ashore	Black, P.	TB	2013	1,2
All Smiles	Sutton, M.	TB	2010	1,2
Allegheny Rose	Spoon, G.	TB	2013	1,2
Almond Berry	Sutton, M.	TB	2013	1,3
Almost Forgotten	Musacchia, J.	LA	2014	1,2,3

Host Gardens: 1 = Presby 2 = Glenara 3 = Hildenbrandt

Alphabetical Cultivar Listing

Name	Hybridizer	Type	Year	Garden
Along Came Fame	Burseen, T.	TB	2013	1,3
Alsea Falls	Schreiner's	TB	2012	1,3
American Goddess	Nichols, H.	TB	2013	1,2
American Original	Tasco, R.	TB	2014	1,2
Anasazi	Filardi, B.	TB	2015	1,2
Anchor Bay	Sutton, M.	TB	2013	1,2
Anne Lowe	Spoon, D.	SDB	2011	1,2
ARAZI	Burton, L.	IB		1
Are You Crazy	Black, P.	TB	2012	1,3
Arrivederci	Keppel, K.	TB	2014	1
Art Festival	Aitken, T.	BB	2012	1,3
Artistic Web	Tasco, R.	TB	2010	1,3
Ashlee Noel	Spoon, D.	TB	2014	1,3
At The Prom	Crump, J. G.	TB	2015	1
Atomic Fireball	Dailey, S.	TB	2015	1,3
Austin City Blues	Nichols, H.	TB	2009	1,2
Australian Rose	Sutton, M.	TB	2010	1,3
Autumn Explosion	Tasco, R.	TB	2013	1,3
Autumn Nectar	Crump, J. G.	TB	2011	1,2
Avant-Premiere	Bersillon, M.	TB	2009	1,3
Baby Duck	Kanarowski, D.	TB	2016	1,2
Baby I love You	Black, P.	TB	2012	1,2
Backdraft	Stout, H.	TB	2010	1,3
Bahama Blues	Sutton, M.	IB	2010	1,2
Ballerina Pink	Black, P.	BB	2010	1,3
Bandwidth	Sutton, M.	TB	2010	1,3
Barbaro	Filardi, B.	TB	2013	1,3
Battle of the Bands	Sutton, M.	TB	2011	1,2
Be Still My Heart	Hilton, G.	TB	2013	1,3
Beacon of Light	Johnson, T.	TB	2013	1,3
Beauty Becomes Her	Black, P.	TB	2010	1,2
Belle of Bella Vista	Fisher, K.	MTB	2013	1,3
Berries And Cream	Schafer/Sacks	SIB	2008	1
Berry Fulfilling	Schreiner's	TB	2013	1,2
Best Friend	Mullin, R.	TB	2011	1,2
Bet the Farm	Schreiner's	TB		1,3
Better Than Butter	Black, P.	TB	2010	1,3
Better Together	Schreiner's	TB	2014	1,3
Betty Ford	Kerr, F.	TB	2014	1,3
Between Jobs	Miller, L.	IB	2014	1,3
Beverly Morningstar	Hill, P.	TB	2015	1,2
Bevie's Delight	Cross, M.	TB	2010	1,3
Bewitching Hour	Helsley, C.	TB	2009	1,2
Beyond Borders	Tasco, R.	TB	2012	1,3
Beyond Bubbles	Burseen, T.	TB	2014	1,3
Beyond the Reef	Johnson, B.	TB	2014	1,3
Big And Rich	Hedgecock, J.	TB	2013	1,3

Host Gardens: 1 = Presby 2 = Glenara 3 = Hildenbrandt

Alphabetical Cultivar Listing

Name	Hybridizer	Type	Year	Garden
Billowing Waves	Keppel, K.	TB	2015	1
Bitty Boo	Musacchia, J.	LA	2014	1,2,3
Black Cherry Sorbet	Harris, C.	MTB	2016	1,2
Blackwater	Schreiner's	TB	2014	1,2
Blaze Valley	Van Hook, J.	TB	2015	1,2
Blazing Gold	Black, P.	SDB	2013	1,3
Blondie's Blush	Sutton, M.	TB	2013	1,3
Blue Hour	Schreiner's	TB	2012	1,2
Blue Hues	Spoon, D.	SDB	2010	1,3
Blue Mountain Cloud	Mann, L.	TB	2016	1,2
Blue My Mind	Schreiner's	TB	2014	1,2
Blue Rivulets	Harris, C.	SPEC	2013	1,2,3
Bluebeard's Gold	Sutton, M.	SDB	2013	1,2
Blueberry Trail	Sutton, G.	BB	2012	1,3
Blueberry Treats	Miller, L.	BB	2013	1,3
Bluebird Kisses	Schafer/Sacks	SIB	2014	1,2,3
Bluebird of Happiness	Black, P.	TB	2012	1,3
Blushing	Black, P.	TB	2011	1,2
Blushing Grapes	Miller, L.	TB	2016	1,3
BO204A	Butler, B.	TB		1,3
Bob's Pride	Annand, R.	TB	2014 reg.	1
Bombay Eyes	Nichols, H.	TB	2009	1,2
Bonjour	Baumunk, L.	BB	2008	1,3
Boot Scoot Boogie	Schreiner's	TB	2012	1,3
Border Skirmish	Ghio, J.	BB	2014	1,2
Born To Be Wild	Aitken, T.	SPEC	2010	1,2,3
Boston Cream	Keppel, K.	TB	2014	1
Bottle Rocket	Sutton, M.	TB	2010	1,2
Bouncing Blue	Spoon, D.	TB	2014	1,3
Boundless	Sutton, M.	TB	2010	1,3
Bouyant Spirit	Aitken, T.	BB	2014	1,2
Bradley Badger	Kasperek, B.	TB	2013	1,3
Brainstorm	Duncan, R.	TB	2012	1,3
Breakfast in Bed	Bunnell, C.	MTB	2014	1,2
Bring It	Hedgecock, J.	TB	2013	1,2
Broadway Contender	Nichols, B.J.	TB	2015	1,2
BU07	Butler, B.	TB		1,2
Bubble Baby	Burseen, T.	TB	2014	1,3
Bubbling Mirth	Filardi, B.	TB	2015	1,2
Bud To Blossom	Lauer, L.	TB	2015	1,2
BUF08A	Butler, B.	TB		1,3
Bunny Slope	Miller, D.	SDB	2013	1,3
Burgundy Fireworks	Aitken, T.	SIB	2013	1,2,3
Burn Notice	Chapman, C.	SDB	2014	1,3
Burst of Light	Nichols, H.	TB	2007	1,3
Butter Rum	Sutton, M.	IB	2013	1,3
Butterscotch Fizz	Schafer/Sacks	SIB	2013	1,2,3

Host Gardens: 1 = Presby 2 = Glenara 3 = Hildenbrandt

Alphabetical Cultivar Listing

Name	Hybridizer	Type	Year	Garden
By Dawns Early Light	Van Liere, R.	TB	2013	1,3
C-01-V-12	Van Hook, J.	TB		1,2
Candy Basket	Harris, C.	MTB	2016	1,3
Cape Cod Boys	Schafer/Sacks	SIB	2009	1,2,3
Cape May	Strohman, R.	SDB	2010	1,3
Cappuccino Lace	Aitken, T.	TB	2015	1,2
Caramel 'N Chocolate	Painter, J.	TB	2015	1,3
Cardinal Expression	Aitken, T.	TB	2014	1,3
Care to Dance	Schreiner's	TB	2013	1,3
Carla Beth	Wyss/Norris	MTB	2012	1,2
Carol Ellen Ramsey	Murphy, D.	BB	2011	1,3
Carrara Cloud	Johnson, B.	TB	2012	1,3
Carry A Torch	Kelly, S.	TB	2013	1,3
Carry On	Lauer, L.	TB	2010	1,2
Cascadian Masterpiece	Nichols, H.	TB	2015	1,2
Cavewoman	Worel, Jack	TB	2013	1,2
Celebratory	Ghio, J.	TB	2014	1,2
Celestial Horizon	Nichols, B.J.	TB	2015	1,2
Celestial Invasion	Hedgecock, J.	TB	2013	1,2
Celtic Dancer	Van Liere, R.	TB	2013	1,2
Celtic Tartan	Keppel, K.	TB	2015	1
Change in the Weather	Schreiner's	TB	2013	1,2
Cheap Frills	Black, P.	TB	2009	1,3
Cheerful Lass	Fisher, K.	MTB	2014	1,3
Cherokee Blaze	Painter, J.	TB	2013	1,2
Cherry Fling	Schafer/Sacks	SIB	2013	1,2,3
Chihuahuan Desert	Dash, H.	TB	2016	1,3
Chili Powder	Sutton, M.	SDB	2014	1,2
Chilly Willy	Aitken, T.	IB	2012	1,2
Chingalata	Hedgecock, J.	TB	2014	1,2
Chocolate Fountain	Fisher, K.	MTB	2015	1,2
Chocolate Soup	Kanarowski, D.	TB	2014	1,2
Christmas Eve	Van Liere, R.	TB	2010	1,3
Citrus Smoothie	Hedgecock, J.	TB	2014	1,3
Citrus Sorbet	Miller, D.	TB	2013	1,2
Civility	Ghio, J.	TB	2013	1,3
Clash of Titans	Black, P.	TB	2014	1,2
Class Clown	Black, P.	TB	2010	1,3
Clipper	Spoon, D.	TB	2014	1,2
Coal Seams	Schreiner's	TB	2013	1,3
Coastal Memories	Schreiner's	TB	2014	1,2
Coffeehouse Chatter	Nichols, H.	TB	2015	1,3
Cold Fusion	Sutton, M.	TB	2011	1,3
Color Strokes	Schreiner's	TB	2012	1,2
Colorflash	Hollingworth, R.	SIB	2012	1,2,3
Coming About	Schreiner's	TB	2012	1,3
Commanding Presence	Black, P.	TB	2014	1,2

Host Gardens: 1 = Presby 2 = Glenara 3 = Hildenbrandt

Alphabetical Cultivar Listing

Name	Hybridizer	Type	Year	Garden
Comme un Volcan	Bersillon, M.	TB	2012	1,2
Confederate Creed	Nichols, H.	TB	2015	1,3
Conflicted Love	Dailey, S.	TB	2015	1,2
Cool Change	Schreiner's	TB	2014	1,3
Coral Cove	Sutton, M.	TB	2010	1,2
Coral Dancer	Edwards, F.	TB	2010	1,2
Coral Sunrise	Miller, L.	MTB	2014	1,3
Core Values	Ghio, J.	TB	2013	1,2
Cornbread N' Honey	Schreiner's	TB	2014	1,2
Cosmic Delight	Aitken, T.	BB	2013	1,3
Courtney Rucker	Lockett, M.	IB	2014	1,2
Cow Patty	Burseen, T.	TB	2014	1,2
Cowboy Caviar	Schreiner's	TB	2013	1,2
CRCG 45-16	Deaton, C.	TB		1,3
Cream de-la Cream	Cross, M.	IB	2015	1,3
Credible Witness	Nichols, H.	TB	2015	1,3
Crestone Peak	Miller, D.	TB	2015	1,3
Cricket Song	Silvers, T.	MTB	2012	1,3
Crimson Fireworks	Dunlop, J.	SIB	2014	1,2,3
Crooked Little Smile	Van Liere, R.	TB	2008	1,2
Crunch	Burseen, T.	TB	2014	1,3
Cuchara Pass	Miller, D.	TB	2015	1,2
Dadgumit	Annand, R.	MTB	2014 reg.	1
Dale Yost	Nichols, H.	TB	2007	1,2
Dallas Diamond Jubilee	Nichols, H.	TB	2015	1,2
Damsel In A Dress	Schreiner's	TB	2014	1,3
Dance Lessons	Worel, Jack	TB	2013	1,2,3
Dancing in the Dark	Johnson, T.	TB	2014	1,2
Dancing Mood	Hollingworth, R.	SIB	2013	1,2,3
Dancing Spree	Schreiner's	TB	2012	1,2
Danseur Mondain	Bersillon, M.	TB	2009	1,2
Dapple Dawn	Markham, L.	BB	2014	1,2
Daring Deception	Johnson, T.	TB	2012	1,3
Dark Icon	Kerr, F.	TB	2014	1,2
Dark Wonder	Tasco, R.	BB	2012	1,3
Dash Of Sunlight	Dunlop, J.	SIB	2016	1,2,3
Dating A Royal	Schreiner's	TB	2014	1,2
Dawn Eternal	Schreiner's	TB	2013	1,2
Dazzle Baby	Spoon, D.	SDB	2013	1,2
DC-T4-07-393-4	Cole, D.	SIB		1,3
De Nile	Kasperek, B.	AB-(AR-)	2012	1,2
Deal or No Deal	Black, P.	TB	2014	1,3
Debutante's Lace	Sutton, M.	TB	2014	1,3
Deep Secret	Lauer, L.	IB	2015	1,3
Desert Aria	Edwards, F.	TB	2014	1,3
Desert Roundelay	Edwards, F.	TB	2012	1,3
Desert Sonata	Edwards, F.	TB	2010	1,2

Host Gardens: 1 = Presby 2 = Glenara 3 = Hildenbrandt

Alphabetical Cultivar Listing

Name	Hybridizer	Type	Year	Garden
Destination Fabulous	Schreiner's	TB	2015	1,3
Destiny's Dream	Aitken, T.	IB	2011	1,3
Devin	Spoon, D.	SDB	2014	1,3
Devoted Daughter	Cross, M.	IB	2013	1,3
Die Laughing	Black, P.	TB	2014	1,2
Dirigo Handy Andy	White, John	SIB	2012	1,2,3
Do The Math	Copeland, Jill	SPEC-X	2008	1,2,3
Doctor Who	Sutton, G.	TB	2010	1,2
Dog and Pony Show	Black, P.	IB	2013	1,3
Dollie and Me	Miller, L.	MTB	2011	1,3
Don't Stop Believing	Johnson, T.	TB	2013	1,2
Dorothy Devenport	Nichols, H.	TB	2003	1,3
Dots and Splashes	Sutton, M.	TB	2010	1,3
Double Chocolate	Painter, J.	TB	2014	1,2
Double Dare	Lockatell, M.	BB	2014	1,3
Double Play	Hollingworth, R.	SIB	2010	1,2,3
Double Wedding	Ghio, J.	TB	2015	1,2
Down to the Wire	Ghio, J.	TB	2015	1,3
Downtown Brown	Schreiner's	TB	2013	1,3
Dragon King	Tasco, R.	TB	2011	1,2
Dramatic Encounter	Painter, L.	TB	2014	1,2
Dreaming in Color	Miller, L.	TB	2013	1,3
Drink Your Tea	Schafer/Sacks	SIB	2014	1,2,3
Drunk Skunk	Kasperek, B.	TB	2012	1,2
Early Harvest	Aitken, T.	BBRE	2014	1,3
Early to Rise	Black, P.	TB	2012	1,2
Earthy Pleasures	Van Liere, R.	TB	2013	1,3
East Hampton	Vaughn, Kevin	BB	2012	1,2
Easy Smile	Silvers, T.	MTB	2009 reg.	1,2
Echo Location	Wilkerson, Betty	TB	2007	1
Edge of Glory	Painter, J.	TB	2012	1,3
Edge of Heaven	Johnson, T.	TB	2013	1,3
Edge Of Tomorrow	Dunlop, J.	SIB	2015	1,2,3
El Greco	Baumunk, L.	TB	2010	1,3
Eleanor Wright-Fink	Kerr, F.	TB	2015	1,2
Elizabeth Adele	Hingiss, B.	TB	2014	1,3
Elizabethan Age	Baumunk, L.	TB	2005	1,2
Empress Ann	Playtis, A.	IB	2013 reg.	1,3
Encore Performance	Hollingworth, R.	SIB	2010	1,2,3
Entrancing	Crump, J. G.	TB	2012 reg.	1,2
Epic Saga	Hedgecock, J.	TB	2014	1
Eramosa Peach Sorbet	Chapman, C.	TB	2014	1,3
Eramosa Stone Washed	Chapman, C.	IB	2014	1,2
Escape from Boredom	Black, P.	TB	2014	1,3
Espionage	Keppel, K.	TB	2015	1
Evening Comes	Schafer/Sacks	SIB	2014	1,2,3
Exit Strategy	Filardi, B.	TB	2015	1,3

Host Gardens: 1 = Presby 2 = Glenara 3 = Hildenbrandt

Alphabetical Cultivar Listing

Name	Hybridizer	Type	Year	Garden
Exotic Eyes	Spoon, D.	SDB	2011	1,2
Exquisite Lady Leah	Wendel, Brian	MTB	2010	1,2
F01-60	Fan, C.	TB		1,3
F02-81C	Fan, C.	TB		1,2
F04-82A	Fan, C.	TB		1,3
F97-1005 AA	Fan, C.	TB		1,3
F99-1057A	Fan, C.	TB		1,2
Fairy Sprinkles	Markham, S.	MTB	2014	1,3
Fallalery	Johnson, B.	TB	2010	1,3
Fancy Me This	Schafer/Sacks	SIB	2012	1,2,3
Fashion Leader	Aitken, T.	BB	2012	1,3
Fashionable One	Fisher, K.	MTB	2014	1,3
Feeling Spicy Tonite	Deaton, C.	TB	2012	1,3
Fiddlin' Around	Schreiner's	TB	2012	1,3
Fiery Echo	Sutton, M.	TB	2013	1,2
Fiery Springs	Nichols, H.	TB	2013	1,2
Fine Romance	Johnson, T.	TB	2013	1,2
Fire Danger	Keppel, K.	TB	2015	1
Firecoal	Markham, S.	TB	2012	1,2
First in Line	Black, P.	BB	2014	1,2
First Lady of Spring	Black, P.	IB	2014	1,3
Fisher Fashion	Fisher, K.	MTB	2013	1,2
Fisherman's Twilight	Copeland, Jim	SIB	2014	1,2,3
Fixin To Fly	Burseen, T.	TB	2014	1,2
Flambeau Dancer	Musacchia, J.	LA	2015	1,3
Flaming Lava	Aitken, T.	TB	2013	1,2
Flaming Lips	Stout, H.	SDB	2013	1,3
Flortine Gold	Filardi, B.	TB	2010	1,2
Football Hero	Miller, L.	TB	2015	1,3
For Veronica	Schreiner's	TB		1,3
Foxy Ferret	Kasperek, B.	MTB	2012	1,3
Free Will	Lauer, L.	TB	2015	1,2
French Lessons	Kerr, F.	TB	2014	1,3
Fresh Powder	Van Liere, R.	TB	2012	1,2
From Within	Sutton, M.	BB	2013	1,3
Fruit Stripe	Sutton, M.	BB	2009	1,2
Full of Grace	Johnson, T.	TB	2013	1,3
Gag Gift	Black, P.	SDB	2013	1,3
Gambling Man	Keppel, K.	TB	2014	1
Garden Diva	Musacchia, J.	LA	2015	1,2,3
Gary Petterson	Edwards, F.	TB	2013	1,3
Gate of Heaven	Zurbrigg, Lloyd	TB	2004	1,2
Gate to Paradise	Black, P.	SDB	2014	1,3
Gecko Echo	Kasperek, B.	MDB	2007	1,3
Gentle Reminder	Keppel, K.	TB	2014	1
Gentle Soul	Ghio, J.	TB	2015	1,3
Gesundheit	Bunnell, C.	MTB	2012	1,3

Host Gardens: 1 = Presby 2 = Glenara 3 = Hildenbrandt

Alphabetical Cultivar Listing

Name	Hybridizer	Type	Year	Garden
Get Back	Lauer, L.	TB	2015	1,3
Gilded Girl	Price, N.	TB	2014	1,3
Ginger Twist	Schafer/Sacks	SIB	2009	1,2,3
Ginny Mitchell	Kerr, F.	TB	2013	1,3
Girl Trouble	Baumunk, L.	TB	2012	1,2
Girly Girl	Schreiner's	TB	2013	1,2
Glacier Melt	Sutton, G.	TB	2010	1,3
Glacier Park	Sutton, M.	TB	2010	1,2
Glimmer of Hope	Johnson, T.	TB	2013	1,2
Glitzorama	Black, P.	BB	2013	1,3
Global Crossing	Van Liere, R.	TB	2012	1,3
Glorious Sky	Schreiner's	TB	2014	1,3
Go Lightly	Miller, D.	TB	2014	1,3
Go West	Duncan, R.	TB	2011	1,2
Going Big Time	Ghio, J.	TB	2014	1,3
Going Dotty	Markham, S.	MTB	2010	1,3
Going Dutch	Van Liere, R.	TB	2008	1,2
Gold and Rubies	Spoon, D.	IB	2012	1,3
Golden Apricot	Sutton, M.	SDB	2010	1,3
Golden Gaga	Painter, L.	TB	2012	1,2
Good Golly Miss Molly	Headrick, D.	TBRE	2014	1,3
Good Morning Sunshine	Johnson, T.	TB	2014	1,3
Gossamer Moon	Markham, S.	MTB	2010	1,2
Gossett's Gamble	Deaton, C.	TB	2015	1,2
Got the Look	Kerr, F.	TB	2013	1,2
Got the Power	Aitken, T.	TB	2013	1,3
Grace and Charm	Black, P.	BB	2013	1,3
Gracious Me	Aitken, T.	TB	2015	1,3
Grafenau	Schreiner's	TB		1,2
Grand Bargain	Sutton, M.	TB	2014	1,2
Grand Review	Nichols, H.	TB	2015	1,3
Granny Apple	Spoon, D.	SDB	2010	1,3
Grapenut	Sutton, M.	BB	2013	1,3
Great Smokey Dawn	Schreiner's	TB	2012	1,2
Green Spring	Spoon, D.	SDB	2011	1,2
Gypsy Gold	West, Kat	TB	2015	1,3
Hail to the Chief	Hollingworth, R.	SIB	2012	1,2,3
Having a Party	Johnson, T.	TB	2014	1,2
Haviture Way	Annand, R.	SDB	2014 reg.	1
Hawaiian Sunrise	Sutton, M.	TB	2013	1,2
Hearts On Fire	Painter, J.	TB	2014	1,3
Heat Is On	Johnson, T.	TB	2013	1,3
Heavenly Host	Ghio, J.	TB	2014	1,2
Heaven's Door	Annand, R.	TB	2014 reg.	1
Heaven's Gift	Cross, M.	TB	2010	1,3
Helen Regina	Playtis, A.	IB	2013 reg.	1,3
Helen's Melody	Stout, H.	TB	2014	1,2

Host Gardens: 1 = Presby 2 = Glenara 3 = Hildenbrandt

Alphabetical Cultivar Listing

Name	Hybridizer	Type	Year	Garden
Hi Buddy	Burton, L.	BB	2015	1,3
Hico Huggins	Burseen, T.	TB	2014	1,3
High Alert	Hedgecock, J.	TB	2011	1
High Desert	Keppel, K.	TB	2015	1
High School Honey	Schreiner's	TB		1,2
Higher Calling	Ghio, J.	TB	2016	1,2
HIL05-2	Hilton, G.	TB		1,2
HIL06-9-8	Hilton, G.	TB		1,3
HIL08-4-1	Hilton, G.	TB		1,2
Hollywood Villain	Burseen, T.	TB	2015	1,3
Honeykist	Stout, H.	TB	2011	1,3
Honky Tonk Rumble	Nichols, H.	TB	2015	1,3
Hoosier Belle	Bunnell, C.	MTB	2012	1,3
Hospitality	Ghio, J.	TB	2015	1,2
Hot News	Markham, S.	MTB	2009	1,3
House Arrest	Keppel, K.	TB	2014	1
How Audacious	Hollingworth, R.	SIB	2009	1,2,3
Howard Bushnell	Fan, C.	TB	2014	1,3
Howling At The Moon	Baumunk, L.	TB	2012	1,2
Huggable You	Black, P.	MTB	2013	1,3
Husky	Black, P.	TB	2014	1,3
Hypnotist	Crump, J. G.	TB	2015	1,3
I Pink I Can	Schreiner's	TB	2013	1,3
Ice Adams	Spoon, D.	TB	2012	1,3
Ice Planet	Tasco, R.	TB	2013	1,2
Icefall	Sutton, M.	TB	2013	1,3
Icing	Markham, S.	MTB	2011	1,2
If Not For You	Baumunk, L.	TB	2010	1,3
I'm So Confused	Deaton, C.	TB	2014	1,2
Immortal	Smith, M.	BB	2013	1,2
Impertinent	Filardi, B.	BB	2011	1,3
In The News	Johnson, T.	TB	2013	1,2
In the Zone	Chapman, C.	SDB	2014	1,3
Insaniac	Johnson, T.	TB	2012	1,3
Inside Out	Sutton, M.	TB	2013	1,2
Inspired Calling	Van Liere, R.	TB	2012	1,3
Intoxicated Ink	Fan, C.	TB	2011	1,2
Island Breeze	Tasco, R.	TB	2012	1,2
Italic Light	Schreiner's	TB	2012	1,3
It's Our Time	Lauer, L.	TB	2016	1,3
Itsa Whatever	Burseen, T.	TB	2014	1,2
Ittle Dew	Price, N.	TB	2014	1,3
Izitme Orizitu	Burseen, T.	TB	2014	1,2
Jane M. Sadler	Schuetz, B.	SIB	2006	1,3
Janet Price	Bushnell, H.	TB	2010	1,2
Jasmine How	Fan, C.	TB	2014	1,2
Jazz Beat	Sorensen, D.	MTB	2012	1,3

Host Gardens: 1 = Presby 2 = Glenara 3 = Hildenbrandt

Alphabetical Cultivar Listing

Name	Hybridizer	Type	Year	Garden
Jazz Pizzazz	Helsley, C.	TB	2012	1,3
Jazzberry	Painter, J.	TB	2013	1,3
Jelly Bean Parade	Kanarowski, D.	TB	2014	1,3
Jennasee	Hollingworth, R.	SIB	2014	1,2,3
Jennasee_	Hollingworth, R.	SIB	2014	1,2,3
Jennifer Stout	Mullin, R.	TB	2010	1,3
Jimmy G	Schreiner's	TB	2015	1,2
Jim's Gem	Hedgecock, J.	TB	2013	1,3
Jolly Young Man	Schafer/Sacks	SIB	2013	1,2,3
Joyce Cole	Cole, D.	SIB	2006	1,2,3
Judy, Judy, Judy	Hollingworth, R.	SIB	2010	1,2,3
Just A Kiss Away	Baumunk, L.	TB	2009	1,3
Just Call Me	Wilkerson, Betty	TB	2008	1,3
Just So Peachy	Markham, S.	TB	2014	1,2
Juvenile Joy	Black, P.	MTB	2014	1,2
Kaibab	Smith, M.	TB	2014	1,2
Key to My Heart	Kerr, F.	TB	2014	1,2
Kimberly My Love	Van Hook, J.	TB	2012	1,2
King of the Road	Lauer, L.	TB	2010	1,3
Kya Ashley	Dailey, S.	TB	2015	1,2
L03-MY-red	Burton, L.	MTB		1,2
L03-MY-rust	Burton, L.	MTB		1,3
La Cumparsita	Crump, J. G.	TB	2013	1
Lacy Lemon	Fan, C.	TB	2009	1,2
Lady Leigh	Lauer, L.	TB	2012	1,2
Lady of Lometa	Landers, J.	LA	2013	1,2, 3
Lakeside Ghost	Harris, C.	SPEC	2012	1,2,3
Lakota	Smith, M.	IB	2014	1,2
Late for the Party	Musacchia, J.	LA	2015	1,3
Late Frost	Playtis, A.	IB	2013 reg.	1,3
Laughing Clown	Black, P.	TB	2013	1,3
Layer Cake	Ghio, J.	TB	2015	1,3
Legal Eagle	Burseen, T.	TB	2014	1,3
Lemon Berry Burst	Sutton, M.	TB	2013	1,3
Lemon Glaze	Cross, M.	TB	2013	1,3
Lemon Mousse	Hollingworth, R.	SIB	2012	1,2,3
Lemon Ripple	Mann, L.	TB	2014	1,2
Lemon Shortcake	Niswonger, D.	SPU	2012	1
Lemon Twizzler	Rowlan, H. by Hedgecock	TB	2012	1,2
Lemony Snicket	Copeland, Jill	SPEC-X	2016	1,2,3
Let It Be Me	Baumunk, L.	TB	2014	1,2
Let It Rain	Painter, L.	TB	2012	1,3
Let's Fly	Schreiner's	TB		1,3
Let's Misbehave	Baumunk, L.	TB	2014	1,2, 3
Lezhinka	Crump, J. G.	TB	2013	1,3
Liddle Elf	Miller, D.	SDB	2014	1,2
Lightsaber	Sutton, M.	TB	2013	1,2

Host Gardens: 1 = Presby 2 = Glenara 3 = Hildenbrandt

Alphabetical Cultivar Listing

Name	Hybridizer	Type	Year	Garden
Like Wow	Schreiner's	TB	2012	1,2
Lilac Morning	Edwards, F.	TB	2010	1,2
Lilac Wings	Black, P.	MTB	2013	1,3
Linda Laing	Spoon, D.	TB	2011	1,2
Linda Nelson	Schreiner's	TB	2014	1,2
Line Drive	Sutton, M.	IB	2007	1,3
Little Blue Chip	Sorensen, D.	SDB	2015	1,3
Little Butterball	Sorensen, D.	SDB	2011	1,3
Little General	Musacchia, J.	LA		1,3
Little Nugget	Sutton, A.	SDB	2011	1,2
Little White Tiger	Witt, Jean	MTB	2013	1,3
Loco Coco	Burseen, T.	TB	2014	1,2
Loosen Up	Burseen, T.	TB	2015	1,2
Loretta Ann	Headrick, D.	TB	2014	1,3
Love in the Air	Miller, L.	BB	2014	1,3
Love Lilt	Johnson, B.	TB	2010	1,3
Love of Life	Ghio, J.	TB	2013	1,3
Loveable Pink	Black, P.	SDB	2013	1,3
Lucy Locket	Schafer/Sacks	SIB	2009	1,2,3
Luminager	Stout, H.	TB	2016	1,2
M-06-V-13	Van Hook, J.	TB		1,2
Magic Mirror	Ghio, J.	TB	2015	1,2
Magic Warrior	Annand, R.	TB	2014 reg.	1
Magneto	Chapman, C.	SDB	2014	1,2
Makin' Good Time	Schreiner's	TB		1,2
Making Time	Lauer, L.	TB	2013	1,3
Mango Queen	Kerr, F.	TB	2013	1,3
Mann 06-LilT	Mann, L.	TB		1,3
Mann 08-FTMbr	Mann, L.	TB		1,3
Mann 11-PEP-2	Mann, L.	TB		1,2
Maria Malibran	Bushnell, H.	TB	2013	1,2
Marry at Sea	Zurbrigg, Lloyd	TB	2000 reg.	1,2
Marrying Kind	Keppel, K.	TB	2015	1
Mary Adele	Spoon, D.	TB	2013	1,3
May Frost	Worel, Jack	TB	2014	1,3
Meadowgaze	Bushnell, H.	TB	2009	1,3
Mean Sharon	Price, N.	TB	2013	1,3
Meerkat Manor	Kasperek, B.	BB	2008	1,3
Melted Butter	Fan, C.	TB	1994	1,2
Mescalero	Smith, M.	IB	2014	1,3
Metro Blue	Lockett, M.	TB	2013 reg.	1,2,3
Midnight Kitty	Edwards, F.	TB	2011	1,3
Midnight Rose	Painter, L.	TB	2014	1,3
Midnight Sharp	Sutton, G.	IB	2010	1,3
Midnight Velvet	Johnson, T.	TB	2014	1,2
Mimosa	Sutton, M.	TB	2011	1,2
Mini Me	Markham, S.	MTB	2013	1,3

Host Gardens: 1 = Presby 2 = Glenara 3 = Hildenbrandt

Alphabetical Cultivar Listing

Name	Hybridizer	Type	Year	Garden
Mink Pink	Kasperek, B.	TB	2013	1,3
Minnesota Nice	Worel, Jack	TB	2015	1,3
Miss Apple	Schafer/Sacks	SIB	2009	1,2,3
Miss Fluffy	Markham, L.	TB	2014	1,3
Missouri Fantasy	Niswonger, D.	TB	2016	1
Molten Flame	Tasco, R.	TB	2013	1,3
Monarch's Cape	Miller, D.	TB	2015	1,3
Monday Morning Blues	Van Liere, R.	TB	2012	1,2
Montegut	Musacchia, J.	LA	2011	1,3
Moonlight Empress	Fan, C.	TB	2010	1,3
Moonlight Fair	Hollingworth, R.	SIB	2011	1,2,3
Moose Tracks	Miller, L.	MTB	2015	1,3
Morgan	Spoon, D.	SDB	2014	1,3
Morpheus	Miller, L.	TB	2014	1,3
Mr. Moonlight	Schreiner's	TB	2012	1,3
Muppet's Sister	Spoon, D.	SDB	2015	1,2
Murder Mystery	Black, P.	TB	2009	1,2
My Butterfly Kisses	Van Liere, R.	TB	2013	1,3
My Cher of Happiness	Black, P.	BB	2013	1,3
My Girl Emily	Cole, D.	SIB	2012	1,2,3
My Tina	Fan, C.	TB	2007	1,3
Name Game	Black, P.	TB	2012	1,2
Neptune's Gold	Hollingworth, R.	SIB	2014	1,2,3
Netted Gold	Markham, S.	MTB	2015	1,3
New Rules	Markham, S.	TB	2013	1,3
Night Bird	Crump, J. G.	TB	2013	1
Ninja Warrior	Miller, L.	TB	2016	1,3
Niswonger Seedling #6-10	Niswonger, D.	TB		1
No Place Like Home	Black, P.	TB	2011	1,3
No Restraint	Black, P.	IB	2013	1,3
Not a Clue	Sutton, M.	TB	2014	1,3
Note To God	Johnson, T.	TB	2012	1,3
Nothing But The Blues	Hollingworth, R.	SIB	2008	1,2,3
O-11-V-13	Van Hook, J.	TB		1,3
Ocelot'z Lot	Kasperek, B.	BB	2013	1,2
Octopi Pi	Kasperek, B.	TB	2012	1,2
Oh Carol	Lauer, L.	TB	2012	1,3
Oliver L. Taetz	Chancellor/Rust	TB	2014	1,2
On Mulberry Street	Schafer/Sacks	SIB	2012	1,2,3
One Last Kiss	Johnson, T.	TB	2014	1,2
One More Night	Duncan, R.	TB	2010	1,3
One Step Beyond	Tasco, R.	TB	2014	1,3
One Trick Pony	Butler, B.	TB	2015 reg.	1,3
Orange Juice	Sutton, M.	TB	2010	1,2
Orange Tie Affair	Crump, J. G.	TB	2015 reg.	1
Orangelo	Sutton, M.	TB	2009	1,3
Organ Mountain Sunrise	Dash, H.	TB	2016	1,2

Host Gardens: 1 = Presby 2 = Glenara 3 = Hildenbrandt

Alphabetical Cultivar Listing

Name	Hybridizer	Type	Year	Garden
Organic Mechanic	Burseen, T.	TB	2014	1,3
Otherside of Heaven	Ghio, J.	TB	2013	1,2
Oui Madame	Schreiner's	TB	2013	1,3
Out of Trouble	Worel, Jack	TB	2015	1,2
Out Walkin'	Schreiner's	TB	2013	1,2
Painted Shadows	Keppel, K.	TB	2015	1
Paprikash	Schafer/Sacks	SIB	2012	1,2,3
Pasqua	Foss, C.	TB	2014	1,2
Pass the Pepper	Aitken, T.	BB	2012	1,3
Passionate Embrace	Black, P.	TB	2010	1,3
Payback Time	Schreiner's	TB	2014	1,2
PBD 09-2	Kelly, S.	TB		1,3
PBD 09-4	Kelly, S.	TB		1,3
Peace of Sky	Schafer/Sacks	SIB	2014	1,2,3
Peacekeeper	Keppel, K.	TB	2014	1
Peach Butter	Black, P.	TB	2013	1,2
Peach Frappuccino	Sutton, G.	SDB	2010	1,2
Peach Pearl	Tasco, R.	TB	2014	1,2
Peach Sorbet	Musacchia, J.	LA	2015	1,3
Petite Purple	Hollingworth, R.	SIB	2012	1,2,3
Pewter and Gold	Filardi, B.	TB	2006	1,3
Phantom Ship	Baumunk, L.	TB	2007	1,2
Phasers On Stun	Kanarowski, D.	TB	2015	1,2
Pink For Feye	Price, N.	TB	2015	1,3
Pink Papaya	Filardi, B.	TB		1,2
Pink Positive	Painter, L.	TB	2013	1,2
Pink Waterfall	Niswonger, D.	TB	2016	1
Pixie Magic	Spoon, D.	TB	2013	1,3
Planet Hollywood	Painter, L.	TB	2013	1,3
Platinum Jubilee	Ghio, J.	TB	2013	1,3
Plum Duck	Kasperek, B.	SPEC-X	2006	1,2
Plum Happiness	Miller, L.	MTB	2014	1,3
Point Counterpoint	Baumunk, L.	TB	2009	1,3
Point to the Sun	Sutton, G.	TB	2013	1,3
Polestar	Stout, H.	TB	2009	1,2
Pool Party	Cole, D.	SIB	2009	1,2,3
Portland Pink	Black, P.	SDB	2015	1,3
Powerhouse Sequel	Nichols, H.	TB	2015	1,3
Pretty as a Picture	Black, P.	TB	2011	1,2
Pretty Priscilla	Spoon, G.	SDB	2013	1,3
Prince Igor	Crump, J. G.	TB	2011	1,3
Princess Ellen	Miller, D.	TB	2015	1,2
Princess Grace	Black, P.	TB	2012	1,3
Princess Isabella	Fan, C.	TB	2012	1,3
Princess Sarah	Playtis, A.	IB	2013 reg.	1,3
Prissy Christy	Burseen, T.	TB	2014	1,2
Procrastinator	Spoon, D.	TB	2014	1,2

Host Gardens: 1 = Presby 2 = Glenara 3 = Hildenbrandt

Alphabetical Cultivar Listing

Name	Hybridizer	Type	Year	Garden
Pure Majestic	Annand, R.	TB	2014 reg.	1
Purple Essence	Stout, H.	TB	2010	1,3
Purplénique	Cross, M.	TB	2015	1,3
Purrfectly Peachy	Cross, M.	TB	2013	1,3
Put Another Nickel In	Bushnell, H.	TB	2010	1,3
Put Upon	Jameson, M.	BB	2012	1,3
Quackery	Filardi, B.	TB	2014	1,3
Queen Eleanor of Aquitaine	Baumunk, L.	TB	2007	1,2
Queen for a Day	Filardi, B.	TB		1,2
Queen Of Everything	Kanarowski, D.	TB	2015	1,3
Quintessa	Painter, J.	TB	2015	1,2
Quite Ahh Sight	Burseen, T.	TB	2014	1,3
R-02-V-12	Van Hook, J.	TB		1,2
R1-S1-2K3	Rohr, K.	SDB		1
Rachel Julia	Edwards, F.	TB	2009	1,2
Rags To Riches	Painter, J.	TB	2013	1,2
Ragtop Day	Schreiner's	TB	2014	1,3
Rainbow Canyon	Spoon, G.	TB	2014	1,3
Rainbow Power	Lauer, L.	TB	2014	1,2
Rainlike	Sutton, G.	SDB	2010	1,2
Rare Coin	Ghio, J.	TB	2014	1,2
Raspberry Shocker	Miller, L.	MTB	2015	1,3
Raspberry Swirl	Sutton, M.	TB	2009	1,3
Ready for My Closeup	Black, P.	TB	2014	1,2
Realm Of Mystery	Miller, D.	TB	2014	1,2
Red Dirt Road	Schreiner's	TB	2013	1,3
Red Hot Chili	Sutton, M.	IB	2008	1,2
Red Hot Momma	Spoon, D.	TB	2014	1,2
Red Velvet Nights	Edwards, F.	TB	2012	1,3
Redneck Girl	Schreiner's	TB	2014	1,2
Reenie	Annand, R.	TB	2014 reg.	1
Restless Tide	Johnson, B.	TB	2015	1,3
Ribbons and Lace	Bauer, C.	TB	2015	1,3
Ricochet Romance	Hill, P.	IB	2014	1,2
Ride Vaquero	Miller, D.	TB	2013	1,3
Ring Of Honor	Hedgecock, L.	TB	2012	1,2
Risk Taker	Johnson, T.	TB	2014	1,3
Robin's Little Sister	Worel, Jack	BB		1,3
Rock Around the Clock	Baumunk, L.	TB	2015	1,2
Rock Climber	Filardi, B.	TB	2012	1,3
Rocky Brook Lady	Fan, C.	TB	2012	1,2
Rocky Mountain News	Baumunk, L.	TB	2014	1,2
Roly Poly	Sorensen, D.	SDB	2011	1,3
Romania, Romania	Crump, J. G.	TB	2010	1,2
Rose City	Miller, L.	MTB	2015	1,3
Ross Island	Price, N.	SPU	2012	1,2
Royal Disposition	Miller, D.	TB	2011	1,2

Host Gardens: 1 = Presby 2 = Glenara 3 = Hildenbrandt

Alphabetical Cultivar Listing

Name	Hybridizer	Type	Year	Garden
Royal Invitation	Nichols, H.	TB	2009	1,2
Royal Retinue	Headrick, D.	TB	2014	1,3
Rust Never Sleeps	Lauer, L.	IB	2013	1,2
Ruth Holbrook	Spoon, D.	TB	2014	1,3
S-5-T	Copeland, Jill	SPEC		1,2,3
S5TXOG-1	Copeland, Jill	SPEC-X		1, 2,3
S5TXOG-3	Copeland, Jill	SPEC-X		1, 2,3
S5TXOG-5	Copeland, Jill	SPEC-X		1, 2,3
S5TXOG-7	Copeland, Jill	SPEC-X		1, 2,3
S5TXOG-8	Copeland, Jill	SPEC-X		1, 2,3
Safari Adventure	Nichols, H.	TB	2015	1,3
Sally's Smile	Musacchia, J.	LA	2011	1,3
Salsa and Chips	Burseen, T.	TB	2014	1,2
Sandy River Belle	Schafer/Sacks	SIB	2011	1,2,3
Sanskrit	Smith, M.	IB	2013	1, 2
Sari's Dance	Spoon, G.	MTB	2008	1,3
Say Please	Cole, D.	SIB	2013	1,2,3
Say You Will	Baumunk, L.	TB	2010	1,3
Scrambled	Black, P.	MTB	2014	1,3
Scrivener	Smith, M.	IB	2011	1,3
Second Violin	Crump, J. G.	TB	2015	1
Secret Santa	Spoon, D.	TB	2009	1,2
See My Etchings	Vaughn, Kevin	BB	2013	1,2
Selah Christine	Spoon, G.	TB	2012	1,3
Sellwood	Price, N.	SPU	2012	1,2
Serving Wench	Miller, L.	TB	2015	1,3
Seychelles	Filardi, B.	TB	2014	1,2
Sharp Dressed Man	Johnson, T.	TB	2010	1,2
Sheer Excitement	Tasco, R.	BB	2011	1,2
Sheila Van Hook	Van Hook, J.	TB	2009	1,2
Shivaree	Keppel, K.	TB	2015	1
Sights Unlimited	Burseen, T.	TB	2014	1,3
Silken Trim	Schreiner's	TB	2012	1,2
Silver Girl	Schafer/Sacks	SIB	2012	1,2,3
Silver Ice	Black, P.	MTB	2014	1,2
Simon Says	Hollingworth, R.	SIB	2007	1,2,3
Simply Coral	Black, P.	TB	2014	1,3
Simply Cute	Copeland, Jill	SPEC-X	2014	1,2,3
Sing Praises	Helsley, C.	BB	2014	1,2
Single Malt	Baumunk, L.	TB	2010	1,3
Sister Shirley	Spoon, D.	TB	2012	1,2
Skeedaddle	Hedgecock, J.	TB	2014	1,3
Skirting The Issue	Schreiner's	TB	2014	1,3
Slew O' Gold	Schreiner's	TB	2013	1,3
Smile For Me	Hingiss, B.	TB	2014	1
Smoky Shadows	Tasco, R.	TB	2010	1,2
Smucker Pruned	Burseen, T.	TB	2014	1,2

Host Gardens: 1 = Presby 2 = Glenara 3 = Hildenbrandt

Alphabetical Cultivar Listing

Name	Hybridizer	Type	Year	Garden
Sneak A Peek	Burseen, T.	TB	2013	1,2
Snow Day	Sutton, M.	TB	2014	1,3
So Unusual	Filardi, B.	TB	2014	1,3
Soda Fountain Shuffle	Locketell, M.	TB	2009 reg	1,3
Soft Sensation	Aitken, T.	TB	2014	1,2
Soft Whispers	Black, P.	TB	2014	1,2
Solar Energy	Schafer/Sacks	SIB	2014	1,2,3
Soleil	Smith, M.	IB	2011	1,2
Something Shocking	Hollingworth, R.	SIB	2013	1,2,3
Sonador	Spoon, D.	SDB	2012	1,2
South Point	Sutton, M.	TB	2014	1,2
Southwest Sweatheart	Pyburn, A.	TB	2015	1,2
Space And Time	Miller, D.	TB	2013	1,3
Speckled Spring	Markham, S.	MTB	2011	1,2
Spell Caster	Crump, J. G.	TB	2015	1,2
SPH02Q261	Copeland, Jill	SPEC-X		1,2, 3
Spiral Galaxy	Ghio, J.	TB	2014	1,3
Spirit Falls	Sorensen, D.	TB	2012	1,3
Spirit Rider	Schreiner's	TB	2013	1,2
Spiritual Harmony	Hedgecock, J.	TB	2013	1,3
Splatter Art	Schreiner's	TB	2013	1,3
Spotted Fever	Hedgecock, J.	TB	2014	1,2
Spring Announcement	Nichols, H.	TB	2009	1,3
Spring Awakening	Kerr, F.	TB	2013	1,2
Stamp of Approval	Nichols, H.	TB	2015	1,2
Star Turn	Ghio, J.	TB	2014	1,2
Star Voyager	Hedgecock, J.	TB	2013	1,2
Static Electricity	Sutton, M.	TB	2013	1,3
Step Back	Burseen, T.	TB	2014	1,3
Stole the Show	Johnson, T.	TB	2013	1,3
Storm Rider	Tasco, R.	TB	2013	1,2
Stormy Sunrise	Edwards, F.	TB	2014 reg.	1,2
Strawberry Fool	Niswonger, D.	TB	2013	1,2
Strawberry Frosting	Sutton, M.	TB	2010	1,2
Strawberry Sorbet	Sutton, M.	TB	2010	1,3
Subtle Beauty	Tasco, R.	TB	2011	1,3
Subtle Suggestion	Miller, D.	TB	2014	1,2
Sub-Zero	Van Hook, J.		2105	1,3
Sugar Rush	Schafer/Sacks	SIB	2008	1,2,3
Sugarplum Dream	Sorensen, D.	IB	2015	1,3
Sun Charm	Varner, T.	MTB	2013	1,2
Sun Cherub	Miller, D.	SDB	2015	1,3
Sundaze	Stout, H.	TB	2014	1,2
Sunny Slope	Sutton, M.	TB	2014	1,2
Sunrise Elegy	Schreiner's	TB	2012	1,3
Sushi	Copeland, Jill	SPEC	2013	1,2,3
Swedish Lullaby	Keppel, K.	TB	2015	1

Host Gardens: 1 = Presby 2 = Glenara 3 = Hildenbrandt

Alphabetical Cultivar Listing

Name	Hybridizer	Type	Year	Garden
Sweet Child Of Mine	Lauer, L.	TB	2015	1,2
Sweetwater Pie Burns	Burseen, T.	TB	2014	1,2
Swing Velvet	Schreiner's	TB	2014	1,3
Swirling Skirts	Burseen, T.	TB	2014	1,3
Swoosh	Miller, L.	TB	2012	1,3
Sylvia's Love	Borglum, S.	SIB	2007	1,3
Syrian Hills	Schreiner's	TB	2012	1,2
T02-2B1	Varnier, W. T.	MTB		1,3
T114-9	Bunnell, C.	MTB		1,3
Tahitian Treat	Sutton, M.	TB	2013	1,3
Tail Hook	Miller, L.	TB	2011	1,3
Taken Back	Hingiss, B.	TB	2013	1
Taking Chances	Johnson, T.	TB	2013	1,2
Tango to the Moonlight	Johnson, B.	TB	2011	1,3
Taylor P. Made	Van Hook, J.	TB	2012	1,3
Teagan	Spoon, D.	SDB	2009	1,3
Texas Two Step	Sutton, G.	TB	2013	1,2
The King Is Coming	Headrick, D.	TB	2014	1,3
Thirty Fathoms	Copeland, Jim	SIB	2016	1,2,3
Three Part Harmony	Black, P.	TB	2014	1,3
Tic Tac Toe	Johnson, T.	MTB	2010	1,3
Tidal Raves	Schreiner's	TB	2014	1,3
Tiff	Lauer, L.	TB	2014	1,2
Tijuana Taxi	Kanarowski, D.	TB	2014	1,2
Tina Louise	Spoon, B.	BB	2009	1,3
Tina's Gift	Spoon, B.	TB	2014	1,3
Tiny Tracks	Sorensen, D.	SDB	2011	1,3
Toad	Price, N.	TB	2015	1,3
Toast of the Town	Black, P.	TB	2011	1,2
Toltec Talisman	Edwards, F.	TB	2013	1,2
Tomorrow's Vision	Annand, R.	TB	2014 reg.	1
Tootsie Roll	Bersillon, M.	BB	2011 reg.	1,2
Top Down	Nichols, H.	TB	2015	1,3
Trick of the Light	Filardi, B.	TB	2011	1,2
Trip To Paris	Schafer/Sacks	SIB	2009	1,2,3
Triple Dip	Black, P.	TB	2014	1,3
Twilight of the Gods	Fan, C.	TB	2007	1,3
Twist of Sheree	Schreiner's	TB	2012	1,3
U08-6V	Ghio, J.	TB		1,3
Under The Boardwalk	Painter, L.	TB	2012	1,2
Under the Sun	Locketell, M.	TB	2013	1,2
Urban Cowgirl	Schreiner's	TB	2013	1,2
V-10-V-12	Van Hook, J.	TB		1,3
Valley Of The Sun	Miller, D.	TB	2015	1,3
Vanilla Frappe	Sutton, M.	TB	2011	1,3
Velvet Elvis	Spoon, G.	SDB	2012	1,2
Velvet Intrigue	Wendel, Brian	MTB	2010	1,3

Host Gardens: 1 = Presby 2 = Glenara 3 = Hildenbrandt

Alphabetical Cultivar Listing

Name	Hybridizer	Type	Year	Garden
Vermeer	Baumunk, L.	TB	2013	1,3
Very Very Good	Black, P.	TB	2013	1,2
Vintage Port	Smith, M.	TB	2013	1,2
Visigoth	Smith, M.	TB	2013	1,3
Vow of Silence	Ghio, J.	TB	2014	1,3
Voyager	Filardi, B.	TB	2014	1,3
W69B-7	Bunnell, C.	MTB		1,3
Wagging Tongues	Filardi, B.	TB	2013	1,2
Water of Life	Black, P.	TB	2011	1,3
Waves of Amber	Sutton, M.	TB	2014	1,2
Whale's Tale	Schreiner's	TB	2012	1,2
What A Beauty	Ghio, J.	TB	2015	1,3
What It's Worth	Schreiner's	TB	2014	1,3
What's New Pussycat	Black, P.	BB	2012	1,3
Whisper Game	Hill, P.	TB	2014	1,2
Who Needs A Prince	Schreiner's	TB	2013	1,2
Who's On First	Hollingworth, R.	SPEC-X	2008	1,2,3
Who's Ya Mama	Musacchia, J.	LA	2015	1,3
Why Cows Gossip	Kanarowski, D.	TB	2015	1,3
Wicked Cool	Hedgecock, J.	TB	2012	1,2
Wicked Good	Black, P.	TB	2012	1,3
Wild	Black, P.	BB	2012	1,3
Wild and Crazy	Black, P.	TB	2014	1,3
Wildcat Madness	Van Hook, J.	TB	2015	1,3
Will and Adelle	Lauer, L.	TB	2014	1,3
Wings At Dawn	Schreiner's	TB	2014	1,2
Wishes Granted	Keppel, K.	TB	2014	1
Witchfire	Smith, M.	IB	2013	1,3
Witty	Black, P.	IB	2012	1,3
Wompanog Warrior	Hedgecock, J.	TB	2014	1,3
Wright's Flights	Sutton, G.	IB	2009	1,3
X-5	Copeland, Jill	SPEC-X		1,2,3
X-6	Copeland, Jill	SPEC-X		1,2,3
YALL READY FOR THIS	Silvers, T.	MTB	2014 reg.	1,2
Yankee Darling	Musacchia, J.	LA	2015	1,2, 3
Yeti Again	Kasperek, B.	TB	2013	1,3
Yonkers	Sutton, G.	IB	2013	1,2
You're My Sunshine	Fan, C.	TB	2010	1,2
Yours Truly	Ghio, J.	TB	2013	1,2
Zumba	Spoon, D.	IB	2013	1,2

Host Gardens: 1 = Presby 2 = Glenara 3 = Hildenbrandt

CONVENTION GARDENS



George Boyce
Glenara Garden



Carol Boyce
Glenara Garden



George Hildenbrandt
and wife Carolee



Nancy Skjei-Laws
Director - Presby Memorial Iris Gardens



George Hildenbrandt
and daughter Jenifer

PRESBY MEMORIAL IRIS GARDENS

474 Upper Mountain Ave

Montclair, NJ 07043

The Presby Memorial Iris Gardens, often referred to as “The Rainbow on the Hill” due to the arching slope of the garden beds and beautiful colors, is located at the base of the 7 ½ acre Mountainside Park. Established in 1927 to honor Frank H. Presby of Montclair, a leading horticulturalist and a founder of The American Iris Society, the gardens showcase over 100,000 blooms during the month of May. This living museum, listed on the State and National Registers of Historic Sites, offers a spectacular display of thousands of iris varieties to visitors from all over the world. Visitors can take a guided cell phone tour of the gardens and view Iris dating back as early as the 1500’s to modern day introductions. Presby is proud to host the 2016 AIS Convention where 887 new varieties will be on display from 93 hybridizers. This bucolic setting is sure to present a magnificent show!

00P11B16

SIB

Cultivar	Type	Year	Comments
00P11B16	SIB		
01-10A	TB		
0467	TB		
04M9A10	SIB		
04M9B1	SIB		
0913	TB		
0930	TB		
07-01-01	LA		
072021	TB		
072022	TB		
06-02A	TB		
06-034-1	TB		
06-078A	TB		
06-37B	MTB		
06-38A	MTB		
06-555-1	TB		
06-B79-1	TB		
07-65A	MTB		
07LAL2	SPEC		
07W4A2	SIB		
08-032-1	BB		
082L13	TB		
08-82A	TB		
08B1A17	SIB		
08Z1	TB		
09-118A	TB		
092M3	TB		
10/12-259-1	TB		

Cultivar	Type	Year	Comments
10-233-1	TB		
10K1	TB		
10K8B3	SIB		
12M26	TB		
12M70	TB		
16-18	TB		
1631-82 A	TB		
18-55	TB		
18-66	TB		
18-76	TB		
18-78	TB		
19-14	TB		
19-2	TB		
19-48	TB		
19-62	TB		
19-76	TB		
19-82	TB		
19-90	TB		
2010-DD	TB		
2010-G	TB		
2010-JJJ	TB		
2010-KK	TB		
2010-SSS	TB		
2011-46	TB		
2011-49	TB		
2011-51	TB		
2013-1	TB		
20	SPEC-X		
20734	TB		
20916	TB		
21013A Sept Re	TB		
21026-1Re	TB		
21026-2Re	TB		
27-07-11	TB		
31-1	SDB		
5-902L	TB		
7625-5766 E	TB		
7625-5766 H	TB		
777	SIB		
A Grape Fit	TB		
A05	TB		
A06	TB		
A17C	TB		
Absolute Crush	TB		
Absolute Star	TB	2013	
Absolute Zero	TB	2012	
Act Surprised	TB	2010	
Action Packed	TB	2011	
Adazzle	MTB	2013	
ADG 11-02-07	TB		

P
R
E
S
B
Y

Cultivar	Type	Year	Comments
ADG 11-02-10	TB		
ADG 11-04-12	TB		
ADG 11-05-02	TB		
Adventurous	TB	2010	
Aello	TB	2014	
Aeolius	IB	2012	
After Party	TB	2013	
After the Rain	TB	2013	
Afterlife	TB	2012	
Alabaster Lace	TB	2015	
Alessandra's Gift	TB	2011	
All Ashore	TB	2013	
All Smiles	TB	2010	
Allegheny Rose	TB	2013	
Almond Berry	TB	2013	
Almost Forgotten	LA	2014	
Along Came Fame	TB	2013	
Alsea Falls	TB	2012	
American Goddess	TB	2013	
American Original	TB	2014	
Anasazi	TB	2015	
Anchor Bay	TB	2013	
Anne Lowe	SDB	2011	
ARAZI	IB		
Are You Crazy	TB	2012	
Arrivederci	TB	2014	
Art Festival	BB	2012	
Artistic Web	TB	2010	
Ashlee Noel	TB	2014	
At The Prom	TB	2015	
Atomic Fireball	TB	2015	
Austin City Blues	TB	2009	
Australian Rose	TB	2010	
Autumn Explosion	TB	2013	
Autumn Nectar	TB	2011	
Avant-Premiere	TB	2009	
Baby Duck	TB	2016	
Baby I love You	TB	2012	
Backdraft	TB	2010	
Bahama Blues	IB	2010	
Ballerina Pink	BB	2010	
Bandwidth	TB	2010	
Barbaro	TB	2013	
Battle of the Bands	TB	2011	
Be Still My Heart	TB	2013	
Beacon of Light	TB	2013	
Beauty Becomes Her	TB	2010	
Belle of Bella Vista	MTB	2013	
Berries And Cream	SIB	2008	
Berry Fulfilling	TB	2013	

Cultivar	Type	Year	Comments
Best Friend	TB	2011	
Bet the Farm	TB		
Better Than Butter	TB	2010	
Better Together	TB	2014	
Betty Ford	TB	2014	
Between Jobs	IB	2014	
Beverly Morningstar	TB	2015	
Bevie's Delight	TB	2010	
Bewitching Hour	TB	2009	
Beyond Borders	TB	2012	
Beyond Bubbles	TB	2014	
Beyond the Reef	TB	2014	
Big And Rich	TB	2013	
Billowing Waves	TB	2015	
Bitty Boo	LA	2014	
Black Cherry Sorbet	MTB	2016	
Blackwater	TB	2014	
Blaze Valley	TB	2015	
Blazing Gold	SDB	2013	
Blondie's Blush	TB	2013	
Blue Hour	TB	2012	
Blue Hues	SDB	2010	
Blue Mountain Cloud	TB	2016	
Blue My Mind	TB	2014	
Blue Rivulets	SPEC	2013	
Bluebeard's Gold	SDB	2013	
Blueberry Trail	BB	2012	
Blueberry Treats	BB	2013	
Bluebird Kisses	SIB	2014	
Bluebird of Happiness	TB	2012	
Blushing	TB	2011	
Blushing Grapes	TB	2016	
BO204A	TB		
Bob's Pride	TB	2014 reg.	
Bombay Eyes	TB	2009	
Bonjour	BB	2008	
Boot Scoot Boogie	TB	2012	
Border Skirmish	BB	2014	
Born To Be Wild	SPEC	2010	
Boston Cream	TB	2014	
Bottle Rocket	TB	2010	
Bouncing Blue	TB	2014	
Boundless	TB	2010	
Bouyant Spirit	BB	2014	
Bradley Badger	TB	2013	
Brainstorm	TB	2012	
Breakfast in Bed	MTB	2014	
Bring It	TB	2013	
Broadway Contender	TB	2015	
BU07	TB		

P
R
E
S
B
Y

Cultivar	Type	Year	Comments
Bubble Baby	TB	2014	
Bubbling Mirth	TB	2015	
Bud To Blossom	TB	2015	
BUF08A	TB		
Bunny Slope	SDB	2013	
Burgundy Fireworks	SIB	2013	
Burn Notice	SDB	2014	
Burst of Light	TB	2007	
Butter Rum	IB	2013	
Butterscotch Fizz	SIB	2013	
By Dawns Early Light	TB	2013	
C-01-V-12	TB		
Candy Basket	MTB	2016	
Cape Cod Boys	SIB	2009	
Cape May	SDB	2010	
Cappuccino Lace	TB	2015	
Caramel 'N Chocolate	TB	2015	
Cardinal Expression	TB	2014	
Care to Dance	TB	2013	
Carla Beth	MTB	2012	
Carol Ellen Ramsey	BB	2011	
Carrara Cloud	TB	2012	
Carry A Torch	TB	2013	
Carry On	TB	2010	
Cascadian Masterpiece	TB	2015	
Cavewoman	TB	2013	
Celebratory	TB	2014	
Celestial Horizon	TB	2015	
Celestial Invasion	TB	2013	
Celtic Dancer	TB	2013	
Celtic Tartan	TB	2015	
Change in the Weather	TB	2013	
Cheap Frills	TB	2009	
Cheerful Lass	MTB	2014	
Cherokee Blaze	TB	2013	
Cherry Fling	SIB	2013	
Chihuahuan Desert	TB	2016	
Chili Powder	SDB	2014	
Chilly Willy	IB	2012	
Chingalata	TB	2014	
Chocolate Fountain	MTB	2015	
Chocolate Soup	TB	2014	
Christmas Eve	TB	2010	
Citrus Smothie	TB	2014	
Citrus Sorbet	TB	2013	
Civility	TB	2013	
Clash of Titans	TB	2014	
Class Clown	TB	2010	
Clipper	TB	2014	
Coal Seams	TB	2013	

Cultivar	Type	Year	Comments
Coastal Memories	TB	2014	
Coffeehouse Chatter	TB	2015	
Cold Fusion	TB	2011	
Color Strokes	TB	2012	
Colorflash	SIB	2012	
Coming About	TB	2012	
Commanding Presence	TB	2014	
Comme un Volcan	TB	2012	
Confederate Creed	TB	2015	
Conflicted Love	TB	2015	
Cool Change	TB	2014	
Coral Cove	TB	2010	
Coral Dancer	TB	2010	
Coral Sunrise	MTB	2014	
Core Values	TB	2013	
Cornbread N' Honey	TB	2014	
Cosmic Delight	BB	2013	
Courtney Rucker	IB	2014	
Cow Patty	TB	2014	
Cowboy Caviar	TB	2013	
CRCG 45-16	TB		
Cream de-la Cream	IB	2015	
Credible Witness	TB	2015	
Crestone Peak	TB	2015	
Cricket Song	MTB	2012	
Crimson Fireworks	SIB	2014	
Crooked Little Smile	TB	2008	
Crunch	TB	2014	
Cuchara Pass	TB	2015	
Dadgumit	MTB	2014 reg.	
Dale Yost	TB	2007	
Dallas Diamond Jubilee	TB	2015	
Damsel In A Dress	TB	2014	
Dance Lessons	TB	2013	
Dancing in the Dark	TB	2014	
Dancing Mood	SIB	2013	
Dancing Spree	TB	2012	
Danseur Mondain	TB	2009	
Dapple Dawn	BB	2014	
Daring Deception	TB	2012	
Dark Icon	TB	2014	
Dark Wonder	BB	2012	
Dash Of Sunlight	SIB	2016	
Dating A Royal	TB	2014	
Dawn Eternal	TB	2013	
Dazzle Baby	SDB	2013	
DC-T4-07-393-4	SIB		
De Nile	AB-(AR-)	2012	
Deal or No Deal	TB	2014	
Debutante's Lace	TB	2014	

P
R
E
S
B
Y

Cultivar	Type	Year	Comments
Deep Secret	IB	2015	
Desert Aria	TB	2014	
Desert Roundelay	TB	2012	
Desert Sonata	TB	2010	
Destination Fabulous	TB	2015	
Destiny's Dream	IB	2011	
Devin	SDB	2014	
Devoted Daughter	IB	2013	
Die Laughing	TB	2014	
Dirigo Handy Andy	SIB	2012	
Do The Math	SPEC-X	2008	
Doctor Who	TB	2010	
Dog and Pony Show	IB	2013	
Dollie and Me	MTB	2011	
Don't Stop Believing	TB	2013	
Dorothy Devenport	TB	2003	
Dots and Splashes	TB	2010	
Double Chocolate	TB	2014	
Double Dare	BB	2014	
Double Play	SIB	2010	
Double Wedding	TB	2015	
Down to the Wire	TB	2015	
Downtown Brown	TB	2013	
Dragon King	TB	2011	
Dramatic Encounter	TB	2014	
Dreaming in Color	TB	2013	
Drink Your Tea	SIB	2014	
Drunk Skunk	TB	2012	
Early Harvest	BBRE	2014	
Early to Rise	TB	2012	
Earthly Pleasures	TB	2013	
East Hampton	BB	2012	
Easy Smile	MTB	2009 reg.	
Echo Location	TB	2007	
Edge of Glory	TB	2012	
Edge of Heaven	TB	2013	
Edge Of Tomorrow	SIB	2015	
El Greco	TB	2010	
Eleanor Wright-Fink	TB	2015	
Elizabeth Adele	TB	2014	
Elizabethan Age	TB	2005	
Empress Ann	IB	2013 reg.	
Encore Performance	SIB	2010	
Entrancing	TB	2012 reg.	
Epic Saga	TB	2014	
Eramosa Peach Sorbet	TB	2014	
Eramosa Stone Washed	IB	2014	
Escape from Boredom	TB	2014	
Espionage	TB	2015	
Evening Comes	SIB	2014	

Cultivar	Type	Year	Comments
Exit Strategy	TB	2015	
Exotic Eyes	SDB	2011	
Exquisite Lady Leah	MTB	2010	
F01-60	TB		
F02-81C	TB		
F04-82A	TB		
F97-1005 AA	TB		
F99-1057A	TB		
Fairy Sprinkles	MTB	2014	
Fallalery	TB	2010	
Fancy Me This	SIB	2012	
Fashion Leader	BB	2012	
Fashionable One	MTB	2014	
Feeling Spicy Tonite	TB	2012	
Fiddlin' Around	TB	2012	
Fiery Echo	TB	2013	
Fiery Springs	TB	2013	
Fine Romance	TB	2013	
Fire Danger	TB	2015	
Firecoal	TB	2012	
First in Line	BB	2014	
First Lady of Spring	IB	2014	
Fisher Fashion	MTB	2013	
Fisherman's Twilight	SIB	2014	
Fixin To Fly	TB	2014	
Flambeau Dancer	LA	2015	
Flaming Lava	TB	2013	
Flaming Lips	SDB	2013	
Florentine Gold	TB	2010	
Football Hero	TB	2015	
For Veronica	TB		
Foxy Ferret	MTB	2012	
Free Will	TB	2015	
French Lessons	TB	2014	
Fresh Powder	TB	2012	
From Within	BB	2013	
Fruit Stripe	BB	2009	
Full of Grace	TB	2013	
Gag Gift	SDB	2013	
Gambling Man	TB	2014	
Garden Diva	LA	2015	
Gary Petterson	TB	2013	
Gate of Heaven	TB	2004	
Gate to Paradise	SDB	2014	
Gecko Echo	MDB	2007	
Gentle Reminder	TB	2014	
Gentle Soul	TB	2015	
Gesundheit	MTB	2012	
Get Back	TB	2015	
Gilded Girl	TB	2014	

P
R
E
S
B
Y

Cultivar	Type	Year	Comments
Ginger Twist	SIB	2009	
Ginny Mitchell	TB	2013	
Girl Trouble	TB	2012	
Girly Girl	TB	2013	
Glacier Melt	TB	2010	
Glacier Park	TB	2010	
Glimmer of Hope	TB	2013	
Glitzorama	BB	2013	
Global Crossing	TB	2012	
Glorious Sky	TB	2014	
Go Lightly	TB	2014	
Go West	TB	2011	
Going Big Time	TB	2014	
Going Dotty	MTB	2010	
Going Dutch	TB	2008	
Gold and Rubies	IB	2012	
Golden Apricot	SDB	2010	
Golden Gaga	TB	2012	
Good Golly Miss Molly	TBRE	2014	
Good Morning Sunshine	TB	2014	
Gossamer Moon	MTB	2010	
Gossett's Gamble	TB	2015	
Got the Look	TB	2013	
Got the Power	TB	2013	
Grace and Charm	BB	2013	
Gracious Me	TB	2015	
Grafenau	TB		
Grand Bargain	TB	2014	
Grand Review	TB	2015	
Granny Apple	SDB	2010	
Grapenut	BB	2013	
Great Smokey Dawn	TB	2012	
Green Spring	SDB	2011	
Gypsy Gold	TB	2015	
Hail to the Chief	SIB	2012	
Having a Party	TB	2014	
Haviture Way	SDB	2014 reg.	
Hawaiian Sunrise	TB	2013	
Hearts On Fire	TB	2014	
Heat Is On	TB	2013	
Heavenly Host	TB	2014	
Heaven's Door	TB	2014 reg.	
Heaven's Gift	TB	2010	
Helen Regina	IB	2013 reg.	
Helen's Melody	TB	2014	
Hi Buddy	BB	2015	
Hico Huggins	TB	2014	
High Alert	TB	2011	
High Desert	TB	2015	
High School Honey	TB		

Cultivar	Type	Year	Comments
Higher Calling	TB	2016	P R E S B Y
HIL05-2	TB		
HIL06-9-8	TB		
HIL08-4-1	TB		
Hollywood Villain	TB	2015	
Honeykist	TB	2011	
Honky Tonk Rumble	TB	2015	
Hoosier Belle	MTB	2012	
Hospitality	TB	2015	
Hot News	MTB	2009	
House Arrest	TB	2014	
How Audacious	SIB	2009	
Howard Bushnell	TB	2014	
Howling At The Moon	TB	2012	
Huggable You	MTB	2013	
Husky	TB	2014	
Hypnotist	TB	2015	
I Pink I Can	TB	2013	
Ice Adams	TB	2012	
Ice Planet	TB	2013	
Icefall	TB	2013	
Icing	MTB	2011	
If Not For You	TB	2010	
I'm So Confused	TB	2014	
Immortal	BB	2013	
Impertinent	BB	2011	
In The News	TB	2013	
In the Zone	SDB	2014	
Insaniac	TB	2012	
Inside Out	TB	2013	
Inspired Calling	TB	2012	
Intoxicated Ink	TB	2011	
Island Breeze	TB	2012	
Italic Light	TB	2012	
It's Our Time	TB	2016	
Itsa Whatever	TB	2014	
Ittle Dew	TB	2014	
Izitme Orizitu	TB	2014	
Jane M. Sadler	SIB	2006	
Janet Price	TB	2010	
Jasmine How	TB	2014	
Jazz Beat	MTB	2012	
Jazz Pizzazz	TB	2012	
Jazzberry	TB	2013	
Jelly Bean Parade	TB	2014	
Jennasee	SIB	2014	
Jennasee_	SIB	2014	
Jennifer Stout	TB	2010	
Jimmy G	TB	2015	
Jim's Gem	TB	2013	

Cultivar	Type	Year	Comments
Jolly Young Man	SIB	2013	
Joyce Cole	SIB	2006	
Judy, Judy, Judy	SIB	2010	
Just A Kiss Away	TB	2009	
Just Call Me	TB	2008	
Just So Peachy	TB	2014	
Juvenile Joy	MTB	2014	
Kaibab	TB	2014	
Key to My Heart	TB	2014	
Kimberly My Love	TB	2012	
King of the Road	TB	2010	
Kya Ashley	TB	2015	
L03-MY-red	MTB		
L03-MY-rust	MTB		
La Cumparsita	TB	2013	
Lacy Lemon	TB	2009	
Lady Leigh	TB	2012	
Lady of Lometa	LA	2013	
Lakeside Ghost	SPEC	2012	
Lakota	IB	2014	
Late for the Party	LA	2015	
Late Frost	IB	2013	reg.
Laughing Clown	TB	2013	
Layer Cake	TB	2015	
Legal Eagle	TB	2014	
Lemon Berry Burst	TB	2013	
Lemon Glaze	TB	2013	
Lemon Mousse	SIB	2012	
Lemon Ripple	TB	2014	
Lemon Shortcake	SPU	2012	
Lemon Twizzler	TB	2012	
Lemony Snicket	SPEC-X	2016	
Let It Be Me	TB	2014	
Let It Rain	TB	2012	
Let's Fly	TB		
Let's Misbehave	TB	2014	
Lezhinka	TB	2013	
Liddle Elf	SDB	2014	
Lightsaber	TB	2013	
Like Wow	TB	2012	
Lilac Morning	TB	2010	
Lilac Wings	MTB	2013	
Linda Laing	TB	2011	
Linda Nelson	TB	2014	
Line Drive	IB	2007	
Little Blue Chip	SDB	2015	
Little Butterball	SDB	2011	
Little General	LA		
Little Nugget	SDB	2011	
Little White Tiger	MTB	2013	

Cultivar	Type	Year	Comments
Loco Coco	TB	2014	
Loosen Up	TB	2015	
Loretta Ann	TB	2014	
Love in the Air	BB	2014	
Love Lilt	TB	2010	
Love of Life	TB	2013	
Loveable Pink	SDB	2013	
Lucy Locket	SIB	2009	
Luminager	TB	2016	
M-06-V-13	TB		
Magic Mirror	TB	2015	
Magic Warrior	TB	2014 reg.	
Magneto	SDB	2014	
Makin' Good Time	TB		
Making Time	TB	2013	
Mango Queen	TB	2013	
Mann 06-LilT	TB		
Mann 08-FTMbr	TB		
Mann 11-PEP-2	TB		
Maria Malibran	TB	2013	
Marry at Sea	TB	2000 reg.	
Marrying Kind	TB	2015	
Mary Adele	TB	2013	
May Frost	TB	2014	
Meadowgaze	TB	2009	
Mean Sharon	TB	2013	
Meerkat Manor	BB	2008	
Melted Butter	TB	1994	
Mescalero	IB	2014	
Metro Blue	TB	2013 reg.	
Midnight Kitty	TB	2011	
Midnight Rose	TB	2014	
Midnight Sharp	IB	2010	
Midnight Velvet	TB	2014	
Mimosa	TB	2011	
Mini Me	MTB	2013	
Mink Pink	TB	2013	
Minnesota Nice	TB	2015	
Miss Apple	SIB	2009	
Miss Fluffy	TB	2014	
Missouri Fantasy	TB	2016	
Molten Flame	TB	2013	
Monarch's Cape	TB	2015	
Monday Morning Blues	TB	2012	
Montegut	LA	2011	
Moonlight Empress	TB	2010	
Moonlight Fair	SIB	2011	
Moose Tracks	MTB	2015	
Morgan	SDB	2014	
Morpheus	TB	2014	

P
R
E
S
B
Y

Cultivar	Type	Year	Comments
Mr. Moonlight	TB	2012	
Muppet's Sister	SDB	2015	
Murder Mystery	TB	2009	
My Butterfly Kisses	TB	2013	
My Cher of Happiness	BB	2013	
My Girl Emily	SIB	2012	
My Tina	TB	2007	
Name Game	TB	2012	
Neptune's Gold	SIB	2014	
Netted Gold	MTB	2015	
New Rules	TB	2013	
Night Bird	TB	2013	
Ninja Warrior	TB	2016	
Niswonger Seedling #6-10	TB		
No Place Like Home	TB	2011	
No Restraint	IB	2013	
Not a Clue	TB	2014	
Note To God	TB	2012	
Nothing But The Blues	SIB	2008	
O-11-V-13	TB		
Ocelot'z Lot	BB	2013	
Octopi Pi	TB	2012	
Oh Carol	TB	2012	
Oliver L. Taetz	TB	2014	
On Mulberry Street	SIB	2012	
One Last Kiss	TB	2014	
One More Night	TB	2010	
One Step Beyond	TB	2014	
One Trick Pony	TB	2015 reg.	
Orange Juice	TB	2010	
Orange Tie Affair	TB	2015 reg.	
Orangelo	TB	2009	
Organ Mountain Sunrise	TB	2016	
Organic Mechanic	TB	2014	
Otherside of Heaven	TB	2013	
Oui Madame	TB	2013	
Out of Trouble	TB	2015	
Out Walkin'	TB	2013	
Painted Shadows	TB	2015	
Paprikash	SIB	2012	
Pasqua	TB	2014	
Pass the Pepper	BB	2012	
Passionate Embrace	TB	2010	
Payback Time	TB	2014	
PBD 09-2	TB		
PBD 09-4	TB		
Peace of Sky	SIB	2014	
Peacekeeper	TB	2014	
Peach Butter	TB	2013	
Peach Frappuccino	SDB	2010	

Cultivar	Type	Year	Comments
Peach Pearl	TB	2014	
Peach Sorbet	LA	2015	
Petite Purple	SIB	2012	
Pewter and Gold	TB	2006	
Phantom Ship	TB	2007	
Phasers On Stun	TB	2015	
Pink For Feye	TB	2015	
Pink Papaya	TB		
Pink Positive	TB	2013	
Pink Waterfall	TB	2016	
Pixie Magic	TB	2013	
Planet Hollywood	TB	2013	
Platinum Jubilee	TB	2013	
Plum Duck	SPEC-X	2006	
Plum Happiness	MTB	2014	
Point Counterpoint	TB	2009	
Point to the Sun	TB	2013	
Polestar	TB	2009	
Pool Party	SIB	2009	
Portland Pink	SDB	2015	
Powerhouse Sequel	TB	2015	
Pretty as a Picture	TB	2011	
Pretty Priscilla	SDB	2013	
Prince Igor	TB	2011	
Princess Ellen	TB	2015	
Princess Grace	TB	2012	
Princess Isabella	TB	2012	
Princess Sarah	IB	2013 reg.	
Prissy Christy	TB	2014	
Procrastinator	TB	2014	
Pure Majestic	TB	2014 reg.	
Purple Essence	TB	2010	
Purplenique	TB	2015	
Purrfectly Peachy	TB	2013	
Put Another Nickel In	TB	2010	
Put Upon	BB	2012	
Quackery	TB	2014	
Queen Eleanor of Aquitaine	TB	2007	
Queen for a Day	TB		
Queen Of Everything	TB	2015	
Quintessa	TB	2015	
Quite Ahh Sight	TB	2014	
R-02-V-12	TB		
R1-S1-2K3	SDB		
Rachel Julia	TB	2009	
Rags To Riches	TB	2013	
Ragtop Day	TB	2014	
Rainbow Canyon	TB	2014	
Rainbow Power	TB	2014	
Rainlike	SDB	2010	

P
R
E
S
B
Y

Cultivar	Type	Year	Comments
Rare Coin	TB	2014	
Raspberry Shocker	MTB	2015	
Raspberry Swirl	TB	2009	
Ready for My Closeup	TB	2014	
Realm Of Mystery	TB	2014	
Red Dirt Road	TB	2013	
Red Hot Chili	IB	2008	
Red Hot Momma	TB	2014	
Red Velvet Nights	TB	2012	
Redneck Girl	TB	2014	
Reenie	TB	2014 reg.	
Restless Tide	TB	2015	
Ribbons and Lace	TB	2015	
Ricochet Romance	IB	2014	
Ride Vaquero	TB	2013	
Ring Of Honor	TB	2012	
Risk Taker	TB	2014	
Robin's Little Sister	BB		
Rock Around the Clock	TB	2015	
Rock Climber	TB	2012	
Rocky Brook Lady	TB	2012	
Rocky Mountain News	TB	2014	
Roly Poly	SDB	2011	
Romania, Romania	TB	2010	
Rose City	MTB	2015	
Ross Island	SPU	2012	
Royal Disposition	TB	2011	
Royal Invitation	TB	2009	
Royal Retinue	TB	2014	
Rust Never Sleeps	IB	2013	
Ruth Holbrook	TB	2014	
S-5-T	SPEC		
S5TXOG-1	SPEC-X		
S5TXOG-3	SPEC-X		
S5TXOG-5	SPEC-X		
S5TXOG-7	SPEC-X		
S5TXOG-8	SPEC-X		
Safari Adventure	TB	2015	
Sally's Smile	LA	2011	
Salsa and Chips	TB	2014	
Sandy River Belle	SIB	2011	
Sanskrit	IB	2013	
Sari's Dance	MTB	2008	
Say Please	SIB	2013	
Say You Will	TB	2010	
Scrambled	MTB	2014	
Scrivener	IB	2011	
Second Violin	TB	2015	
Secret Santa	TB	2009	
See My Etchings	BB	2013	

Cultivar	Type	Year	Comments
Selah Christine	TB	2012	
Sellwood	SPU	2012	
Serving Wench	TB	2015	
Seychelles	TB	2014	
Sharp Dressed Man	TB	2010	
Sheer Excitement	BB	2011	
Sheila Van Hook	TB	2009	
Shivaree	TB	2015	
Sights Unlimited	TB	2014	
Silken Trim	TB	2012	
Silver Girl	SIB	2012	
Silver Ice	MTB	2014	
Simon Says	SIB	2007	
Simply Coral	TB	2014	
Simply Cute	SPEC-X	2014	
Sing Praises	BB	2014	
Single Malt	TB	2010	
Sister Shirley	TB	2012	
Skeedaddle	TB	2014	
Skirting The Issue	TB	2014	
Slew O' Gold	TB	2013	
Smile For Me	TB	2014	
Smoky Shadows	TB	2010	
Smucker Pruned	TB	2014	
Sneak A Peek	TB	2013	
Snow Day	TB	2014	
So Unusual	TB	2014	
Soda Fountain Shuffle	TB	2009 reg	
Soft Sensation	TB	2014	
Soft Whispers	TB	2014	
Solar Energy	SIB	2014	
Soleil	IB	2011	
Something Shocking	SIB	2013	
Sonador	SDB	2012	
South Point	TB	2014	
Southwest Sweatheart	TB	2015	
Space And Time	TB	2013	
Speckled Spring	MTB	2011	
Spell Caster	TB	2015	
SPH02Q261	SPEC-X		
Spiral Galaxy	TB	2014	
Spirit Falls	TB	2012	
Spirit Rider	TB	2013	
Spiritual Harmony	TB	2013	
Splatter Art	TB	2013	
Spotted Fever	TB	2014	
Spring Announcement	TB	2009	
Spring Awakening	TB	2013	
Stamp of Approval	TB	2015	
Star Turn	TB	2014	

P
R
E
S
B
Y

Cultivar	Type	Year	Comments
Star Voyager	TB	2013	
Static Electricity	TB	2013	
Step Back	TB	2014	
Stole the Show	TB	2013	
Storm Rider	TB	2013	
Stormy Sunrise	TB	2014	reg.
Strawberry Fool	TB	2013	
Strawberry Frosting	TB	2010	
Strawberry Sorbet	TB	2010	
Subtle Beauty	TB	2011	
Subtle Suggestion	TB	2014	
Sub-Zero	TB	2105	
Sugar Rush	SIB	2008	
Sugarplum Dream	IB	2015	
Sun Charm	MTB	2013	
Sun Cherub	SDB	2015	
Sundaze	TB	2014	
Sunny Slope	TB	2014	
Sunrise Elegy	TB	2012	
Sushi	SPEC	2013	
Swedish Lullaby	TB	2015	
Sweet Child Of Mine	TB	2015	
Sweetwater Pie Burns	TB	2014	
Swing Velvet	TB	2014	
Swirling Skirts	TB	2014	
Swoosh	TB	2012	
Sylvia's Love	SIB	2007	
Syrian Hills	TB	2012	
T02-2B1	MTB		
T114-9	MTB		
Tahitian Treat	TB	2013	
Tail Hook	TB	2011	
Taken Back	TB	2013	
Taking Chances	TB	2013	
Tango to the Moonlight	TB	2011	
Taylor P. Made	TB	2012	
Teagan	SDB	2009	
Texas Two Step	TB	2013	
The King Is Coming	TB	2014	
Thirty Fathoms	SIB	2016	
Three Part Harmony	TB	2014	
Tic Tac Toe	MTB	2010	
Tidal Raves	TB	2014	
Tiff	TB	2014	
Tijuana Taxi	TB	2014	
Tina Louise	BB	2009	
Tina's Gift	TB	2014	
Tiny Tracks	SDB	2011	
Toad	TB	2015	
Toast of the Town	TB	2011	

Cultivar	Type	Year	Comments
Toltec Talisman	TB	2013	
Tomorrow's Vision	TB	2014 reg.	
Tootsie Roll	BB	2011 reg.	
Top Down	TB	2015	
Trick of the Light	TB	2011	
Trip To Paris	SIB	2009	
Triple Dip	TB	2014	
Twilight of the Gods	TB	2007	
Twist of Sheree	TB	2012	
U08-6V	TB		
Under The Boardwalk	TB	2012	
Under the Sun	TB	2013	
Urban Cowgirl	TB	2013	
V-10-V-12	TB		
Valley Of The Sun	TB	2015	
Vanilla Frappe	TB	2011	
Velvet Elvis	SDB	2012	
Velvet Intrigue	MTB	2010	
Vermeer	TB	2013	
Very Very Good	TB	2013	
Vintage Port	TB	2013	
Visigoth	TB	2013	
Vow of Silence	TB	2014	
Voyager	TB	2014	
W69B-7	MTB		
Wagging Tongues	TB	2013	
Water of Life	TB	2011	
Waves of Amber	TB	2014	
Whale's Tale	TB	2012	
What A Beauty	TB	2015	
What It's Worth	TB	2014	
What's New Pussycat	BB	2012	
Whisper Game	TB	2014	
Who Needs A Prince	TB	2013	
Who's On First	SPEC-X	2008	
Who's Ya Mama	LA	2015	
Why Cows Gossip	TB	2015	
Wicked Cool	TB	2012	
Wicked Good	TB	2012	
Wild	BB	2012	
Wild and Crazy	TB	2014	
Wildcat Madness	TB	2015	
Will and Adelle	TB	2014	
Wings At Dawn	TB	2014	
Wishes Granted	TB	2014	
Witchfire	IB	2013	
Witty	IB	2012	
Wompanog Warrior	TB	2014	
Wright's Flights	IB	2009	
X-5	SPEC-X		

P
R
E
S
B
Y

Cultivar	Type	Year	Comments
X-6	SPEC-X		
YALL READY FOR THIS	MTB	2014	reg.
Yankee Darling	LA	2015	
Yeti Again	TB	2013	
Yonkers	IB	2013	
You're My Sunshine	TB	2010	
Yours Truly	TB	2013	
Zumba	IB	2013	

GEORGE BOYCE'S GLENARA GARDENS

620 Dairy Road Palmerton PA 18071

Glenara Gardens began in Upstate Central New York where George grew up. His radio and TV broadcasting career and Carol's career in education took them from Cypress Gardens, Florida to Maine, Vermont, back to New York, and finally to Pennsylvania, Carol's home state.

During those moves, the plant collection grew, usually spending time in the ground but sometimes of necessity in pots or black plastic garbage bags. Some of the plants have been "in the family" for over 100 years! The Boyces began to specialize in iris once they joined the Maine Iris Society and came under the tutelage of Auburn neighbors Russell Moors, John White, and Carol's co-worker, John's son Ted White. John introduced George to Dr. Currier McEwen whose gardens were nearby, and that cemented the Boyces' love for both Siberian and Japanese iris. Glenara Gardens became a host garden for the 1990 National Japanese Iris Convention which honored Dr. McEwen. Some of the world's great hybridizers were guests.

After stops in Vermont, the Hudson Valley of New York State, and the Finger Lakes, work and retirement took the Boyces to Palmerton, PA and the six acres including koi lake that now comprise Glenara Gardens. The collection has spread out to include 60+ varieties of lilacs, daffodils and narcissus, roses, rare trees, daylilies, a shade garden, rhododendrons and azaleas, hostas, water plants, and especially irises including Louisiana, Siberian, bearded, pseudata, and one of the largest collections of Japanese iris in Pennsylvania. The John White Memorial Bed contains all of John's Japanese and Siberian creations. In addition, the vegetable garden and the Siberian, Japanese and daylily hybridized seedling beds have all become popular spots.

Cultivar	Type	Year	Comments
00P11B16	SIB		
01-10A	TB		
04M9A10	SIB		
04M9B1	SIB		
0913	TB		
06-02A	TB		
06-034-1	TB		
06-37B	MTB		
06-B79-1	TB		
07-65A	MTB		
07LAL2	SPEC		
07W4A2	SIB		

Cultivar	Type	Year	Comments
08-032-1	BB		
08B1A17	SIB		
08Z1	TB		
09-118A	TB		
10/12-259-1	TB		
10K8B3	SIB		
12M26	TB		
16-18	TB		
18-66	TB		
18-76	TB		
19-2	TB		
19-48	TB		
19-82	TB		
2010-G	TB		
2010-JJJ	TB		
2010-KK	TB		
2011-49	TB		
21026-2Re	TB		
5-902L	TB		
7625-5766 H	TB		
A06	TB		
A17C	TB		
Absolute Crush	TB		
Act Surprised	TB	2010	
Action Packed	TB	2011	
Adazzle	MTB	2013	
ADG 11-04-12	TB		
ADG 11-05-02	TB		
Afterlife	TB	2012	
All Ashore	TB	2013	
All Smiles	TB	2010	
Allegheny Rose	TB	2013	
Almost Forgotten	LA	2014	
American Goddess	TB	2013	
American Original	TB	2014	
Anasazi	TB	2015	
Anchor Bay	TB	2013	
Anne Lowe	SDB	2011	
Austin City Blues	TB	2009	
Autumn Nectar	TB	2011	
Baby Duck	TB	2016	
Baby I love You	TB	2012	
Bahama Blues	IB	2010	
Battle of the Bands	TB	2011	
Beauty Becomes Her	TB	2010	
Berry Fulfilling	TB	2013	
Best Friend	TB	2011	
Beverly Morningstar	TB	2015	
Bewitching Hour	TB	2009	
Black Cherry Sorbet	MTB	2016	

Cultivar	Type	Year	Comments
Blackwater	TB	2014	
Blaze Valley	TB	2015	
Blue Hour	TB	2012	
Blue Mountain Cloud	TB	2016	
Blue My Mind	TB	2014	
Bluebeard's Gold	SDB	2013	
Blushing	TB	2011	
Bombay Eyes	TB	2009	
Border Skirmish	BB	2014	
Bottle Rocket	TB	2010	
Bouyant Spirit	BB	2014	
Breakfast in Bed	MTB	2014	
Bring It	TB	2013	
Broadway Contender	TB	2015	
BU07	TB		
Bubbling Mirth	TB	2015	
Bud To Blossom	TB	2015	
C-01-V-12	TB		
Cappuccino Lace	TB	2015	
Carla Beth	MTB	2012	
Carry On	TB	2010	
Cascadian Masterpiece	TB	2015	
Cavewoman	TB	2013	
Celebratory	TB	2014	
Celestial Horizon	TB	2015	
Celestial Invasion	TB	2013	
Celtic Dancer	TB	2013	
Change in the Weather	TB	2013	
Cherokee Blaze	TB	2013	
Chili Powder	SDB	2014	
Chilly Willy	IB	2012	
Chingalata	TB	2014	
Chocolate Fountain	MTB	2015	
Chocolate Soup	TB	2014	
Citrus Sorbet	TB	2013	
Clash of Titans	TB	2014	
Clipper	TB	2014	
Coastal Memories	TB	2014	
Color Strokes	TB	2012	
Commanding Presence	TB	2014	
Comme un Volcan	TB	2012	
Conflicted Love	TB	2015	
Coral Cove	TB	2010	
Coral Dancer	TB	2010	
Core Values	TB	2013	
Cornbread N' Honey	TB	2014	
Courtney Rucker	IB	2014	
Cow Patty	TB	2014	
Cowboy Caviar	TB	2013	
Crooked Little Smile	TB	2008	

G
L
E
N
A
R
A

Cultivar	Type	Year	Comments
Cuchara Pass	TB	2015	
Dale Yost	TB	2007	
Dallas Diamond Jubilee	TB	2015	
Dancing in the Dark	TB	2014	
Dancing Spree	TB	2012	
Danseur Mondain	TB	2009	
Dapple Dawn	BB	2014	
Dark Icon	TB	2014	
Dating A Royal	TB	2014	
Dawn Eternal	TB	2013	
Dazzle Baby	SDB	2013	
De Nile	AB-(AR-)	2012	
Desert Sonata	TB	2010	
Die Laughing	TB	2014	
Doctor Who	TB	2010	
Don't Stop Believing	TB	2013	
Double Chocolate	TB	2014	
Double Wedding	TB	2015	
Dragon King	TB	2011	
Dramatic Encounter	TB	2014	
Drunk Skunk	TB	2012	
Early to Rise	TB	2012	
East Hampton	BB	2012	
Easy Smile	MTB	2009 reg.	
Eleanor Wright-Fink	TB	2015	
Elizabethan Age	TB	2005	
Entrancing	TB	2012 reg.	
Eramosa Stone Washed	IB	2014	
Exotic Eyes	SDB	2011	
Exquisite Lady Leah	MTB	2010	
F02-81C	TB		
F99-1057A	TB		
Fiery Echo	TB	2013	
Fiery Springs	TB	2013	
Fine Romance	TB	2013	
Firecoal	TB	2012	
First in Line	BB	2014	
Fisher Fashion	MTB	2013	
Fixin To Fly	TB	2014	
Flaming Lava	TB	2013	
Florentine Gold	TB	2010	
Free Will	TB	2015	
Fresh Powder	TB	2012	
Fruit Stripe	BB	2009	
Gate of Heaven	TB	2004	
Girl Trouble	TB	2012	
Girly Girl	TB	2013	
Glacier Park	TB	2010	
Glimmer of Hope	TB	2013	
Go West	TB	2011	

Cultivar	Type	Year	Comments
Going Dutch	TB	2008	
Golden Gaga	TB	2012	
Gossamer Moon	MTB	2010	
Gossett's Gamble	TB	2015	
Got the Look	TB	2013	
Grafenau	TB		
Grand Bargain	TB	2014	
Great Smokey Dawn	TB	2012	
Green Spring	SDB	2011	
Having a Party	TB	2014	
Hawaiian Sunrise	TB	2013	
Heavenly Host	TB	2014	
Helen's Melody	TB	2014	
High School Honey	TB		
Higher Calling	TB	2016	
HIL05-2	TB		
HIL08-4-1	TB		
Hospitality	TB	2015	
Howling At The Moon	TB	2012	
Ice Planet	TB	2013	
Icing	MTB	2011	
I'm So Confused	TB	2014	
Immortal	BB	2013	
In The News	TB	2013	
Inside Out	TB	2013	
Intoxicated Ink	TB	2011	
Island Breeze	TB	2012	
Itsa Whatever	TB	2014	
Izitme Orizitu	TB	2014	
Janet Price	TB	2010	
Jasmine How	TB	2014	
Jimmy G	TB	2015	
Just So Peachy	TB	2014	
Juvenile Joy	MTB	2014	
Kaibab	TB	2014	
Key to My Heart	TB	2014	
Kimberly My Love	TB	2012	
Kya Ashley	TB	2015	
L03-MY-red	MTB		
Lacy Lemon	TB	2009	
Lady Leigh	TB	2012	
Lakota	IB	2014	
Lemon Ripple	TB	2014	
Lemon Twizzler	TB	2012	
Let It Be Me	TB	2014	
Liddle Elf	SDB	2014	
Lightsaber	TB	2013	
Like Wow	TB	2012	
Lilac Morning	TB	2010	
Linda Laing	TB	2011	

G
L
E
N
A
R
A

Cultivar	Type	Year	Comments
Linda Nelson	TB	2014	
Little Nugget	SDB	2011	
Loco Coco	TB	2014	
Loosen Up	TB	2015	
Luminager	TB	2016	
M-06-V-13	TB		
Magic Mirror	TB	2015	
Magneto	SDB	2014	
Makin' Good Time	TB		
Mann 11-PEP-2	TB		
Maria Malibran	TB	2013	
Marry at Sea	TB	2000	reg.
Melted Butter	TB	1994	
Midnight Velvet	TB	2014	
Mimosa	TB	2011	
Monday Morning Blues	TB	2012	
Muppet's Sister	SDB	2015	
Murder Mystery	TB	2009	
Name Game	TB	2012	
Ocelot'z Lot	BB	2013	
Octopi Pi	TB	2012	
Oliver L. Taetz	TB	2014	
One Last Kiss	TB	2014	
Orange Juice	TB	2010	
Organ Mountain Sunrise	TB	2016	
Otherside of Heaven	TB	2013	
Out of Trouble	TB	2015	
Out Walkin'	TB	2013	
Pasqua	TB	2014	
Payback Time	TB	2014	
Peach Butter	TB	2013	
Peach Frappuccino	SDB	2010	
Peach Pearl	TB	2014	
Phantom Ship	TB	2007	
Phasers On Stun	TB	2015	
Pink Papaya	TB		
Pink Positive	TB	2013	
Plum Duck	SPEC-X	2006	
Polestar	TB	2009	
Pretty as a Picture	TB	2011	
Princess Ellen	TB	2015	
Prissy Christy	TB	2014	
Procrastinator	TB	2014	
Queen Eleanor of Aquitaine	TB	2007	
Queen for a Day	TB		
Quintessa	TB	2015	
R-02-V-12	TB		
Rachel Julia	TB	2009	
Rags To Riches	TB	2013	
Rainbow Power	TB	2014	

Cultivar	Type	Year	Comments
Rainlike	SDB	2010	
Rare Coin	TB	2014	
Ready for My Closeup	TB	2014	
Realm Of Mystery	TB	2014	
Red Hot Chili	IB	2008	
Red Hot Momma	TB	2014	
Redneck Girl	TB	2014	
Ricochet Romance	IB	2014	
Ring Of Honor	TB	2012	
Rock Around the Clock	TB	2015	
Rocky Brook Lady	TB	2012	
Rocky Mountain News	TB	2014	
Romania, Romania	TB	2010	
Ross Island	SPU	2012	
Royal Disposition	TB	2011	
Royal Invitation	TB	2009	
Rust Never Sleeps	IB	2013	
Salsa and Chips	TB	2014	
Sanskrit	IB	2013	
Secret Santa	TB	2009	
See My Etchings	BB	2013	
Sellwood	SPU	2012	
Seychelles	TB	2014	
Sharp Dressed Man	TB	2010	
Sheer Excitement	BB	2011	
Sheila Van Hook	TB	2009	
Silken Trim	TB	2012	
Silver Ice	MTB	2014	
Sing Praises	BB	2014	
Sister Shirley	TB	2012	
Smoky Shadows	TB	2010	
Smucker Pruned	TB	2014	
Sneak A Peek	TB	2013	
Soft Sensation	TB	2014	
Soft Whispers	TB	2014	
Soleil	IB	2011	
Sonador	SDB	2012	
South Point	TB	2014	
Southwest Sweatheart	TB	2015	
Speckled Spring	MTB	2011	
Spell Caster	TB	2015	
Spirit Rider	TB	2013	
Spotted Fever	TB	2014	
Spring Awakening	TB	2013	
Stamp of Approval	TB	2015	
Star Turn	TB	2014	
Star Voyager	TB	2013	
Storm Rider	TB	2013	
Stormy Sunrise	TB	2014 reg.	
Strawberry Fool	TB	2013	

G
L
E
N
A
R
A

Cultivar	Type	Year	Comments
Strawberry Frosting	TB	2010	
Subtle Suggestion	TB	2014	
Sun Charm	MTB	2013	
Sundaze	TB	2014	
Sunny Slope	TB	2014	
Sweet Child Of Mine	TB	2015	
Sweetwater Pie Burns	TB	2014	
Syrian Hills	TB	2012	
Taking Chances	TB	2013	
Texas Two Step	TB	2013	
Tiff	TB	2014	
Tijuana Taxi	TB	2014	
Toast of the Town	TB	2011	
Toltec Talisman	TB	2013	
Tootsie Roll	BB	2011	reg.
Trick of the Light	TB	2011	
Under The Boardwalk	TB	2012	
Under the Sun	TB	2013	
Urban Cowgirl	TB	2013	
Velvet Elvis	SDB	2012	
Very Very Good	TB	2013	
Vintage Port	TB	2013	
Wagging Tongues	TB	2013	
Waves of Amber	TB	2014	
Whale's Tale	TB	2012	
Whisper Game	TB	2014	
Who Needs A Prince	TB	2013	
Wicked Cool	TB	2012	
Wings At Dawn	TB	2014	
YALL READY FOR THIS	MTB	2014	reg.
Yonkers	IB	2013	
You're My Sunshine	TB	2010	
Yours Truly	TB	2013	
Zumba	IB	2013	

GEORGE HILDENBRANDT GARDEN

4245 Lovers Lane Slatington, PA 18080-3651

The convention title “Going East” resonates strongly with my and the garden’s life histories. I was born in Denver and lived on a farm 40 miles downriver from the city for my first five years. This was where my father first took an interest in irises with the encouragement of a neighbor and a few plants from Long’s Gardens in Boulder. In 1950 we took the small collection of plants and moved east to my mother’s family farm in Lexington Nebraska. I started kindergarten and Dad started collecting irises. With the help of a family friend who already had a substantial iris garden and AIS contacts Dad’s collecting went into warp drive. Soon J. Arthur Nelson, AIS Director of Exhibitions at the time, was persuaded to drive the 230 miles to Lexington (and the same distance home in one evening so he wouldn’t miss a beat as a principal in the Omaha Public School System) to preside at the founding of the Dawson County Iris Society. At about the same time discovery of Lloyd Austin’s Rainbow Hybridizing Gardens catalog with those wonderful pictures and descriptions of arils and arilbreds sparked a major obsession for Dad and for me as well. Many members of the fledgling DCIS tried to grow *I. gatesii* and a few even bloomed it for two or three years but soon Dad and the others gave up the unsustainable fling with oncos and took up the new family of fertile AB’s from C. G. White. Also in the late ‘50’s Hildenbrandt’s Iris Garden began selling plants to subsidize the ever growing collection. The small commercial operation continued for fifty years. Les and Arvella hosted many garden tours for DCIS and Region 21 and welcomed itinerate irisarians including Bee Warburton and 1st Vice president Hubert Fischer driving to the 1963 Denver Convention. I left the garden and the state after completing a B. S. degree in 1967 and moved east to East Lansing, MI for four years then detoured west to Tucson, AZ for three years before resuming my eastward migration to State College, PA. My iris involvement was dormant for nearly 40 years after leaving Lexington.

Retirement in 2005 lead to my moving east again to the Slatington, PA farm I had recently inherited from my late wife. Finally there would be time and space to indulge my iris interests. My daughter who was already living on the farm with her family persuaded me that she would take on the continued operation of iris sales if I would move the garden from NE to PA. This great leap East for Hildenbrandt’s Iris Garden was completed by 2008 as Dad’s health deteriorated and gardening became unrewarding at age 90. Due to growing family obligations Jennifer closed sales in 2013. That was also the year we said good bye to Dad and he made his final trip to Omaha having donated his body to medical

Cultivar	Type	Year	Comments
----------	------	------	----------

science. I continue to operate the garden for my pleasure with an emphasis on collecting and hybridizing the things that interest me most.

As you arrive at 4245 Lovers Lane on May 27 you will encounter a descending slope to the right of the driveway which displays approximately 400 guest bearded irises arrayed in terraced beds. When you gaze further down the slope past a small bed of peonies you will see the beardless guest bed containing nearly 100 varieties. Immediately below the guest bed is my collection of Siberians which should have significant bloom. The remaining beds contain numerous versicolors, pseudatas, other beardless SPEC-X varieties as well as extensive beds of Louisianas. Hopefully there will be some bloom on the *I. fulva* clones as well as the wild collected *I. ensata* and other species or SPEC-X from SIGNA seed exchange offerings. If you continue wandering into the rough you may encounter a Jack-in-the-pulpit, a wild geranium or other wild native fare including the ubiquitous poison ivy in both the wet meadow and the woods. So you may want to stay in mowed areas.

Returning up the slope you'll encounter the refreshment table and the restroom facilities as you cross to the high side of the driveway. Here you will find my bearded iris collection and a few odd seedlings. First is the arilbred bed followed by several rows of medians – MTBs, SDBs and a few BBs – plus *I. variegata* and a few other bearded species. Passing above the row of peonies you encounter a bed of various dwarf, median and bearded SPEC-X cultivars and seedlings. You have now arrived at my TB beds. The newest acquisitions – some of which are historic - are in the first bed.

If you wish to take a less steep path up to the driveway veer right at the blueberry cage and follow your ears to the wind chimes in the pergola or the waterfall in the pond. You will end up near my cottage with a few irises scattered about and my aril bed which may have a late bloom or two.

I look forward to welcoming you to PA and sharing whatever happens to be blooming on May 27 this year. Carolee looks forward to sharing the embellished story of how the '05 Saint Louis Convention brought her and New York City into my life. This final episode in my "Going East" saga has me wondering, what would Horace Greeley say?

Cultivar	Type	Year	Comments
00P11B16	SIB		
0467	TB		
04M9A10	SIB		
04M9B1	SIB		
0930	TB		
07-01-01	LA		
06-078A	TB		
06-38A	MTB		
06-555-1	TB		
07LAL2	SPEC		
07W4A2	SIB		
082L13	TB		
08-82A	TB		
08B1A17	SIB		
10-233-1	TB		
10K8B3	SIB		
12M70	TB		
1631-82 A	TB		
18-55	TB		
18-78	TB		
19-14	TB		
19-62	TB		
19-76	TB		
19-90	TB		
2010-DD	TB		
2010-SSS	TB		
2011-46	TB		
2011-51	TB		
2013-1	TB		
20	SPEC-X		
20734	TB		
27-07-11	TB		
31-1	SDB		
7625-5766 E	TB		
777	SIB		
A Grape Fit	TB		
A05	TB		
Absolute Star	TB	2013	
Absolute Zero	TB	2012	
ADG 11-02-07	TB		
ADG 11-02-10	TB		
Adventurous	TB	2010	
Aello	TB	2014	
Aeolius	IB	2012	
After Party	TB	2013	
After the Rain	TB	2013	
Alabaster Lace	TB	2015	
Alessandra's Gift	TB	2011	
Almond Berry	TB	2013	
Almost Forgotten	LA	2014	

H I L D E N B R A N D T

Cultivar	Type	Year	Comments
Along Came Fame	TB	2013	
Alsea Falls	TB	2012	
Are You Crazy	TB	2012	
Art Festival	BB	2012	
Artistic Web	TB	2010	
Ashlee Noel	TB	2014	
Atomic Fireball	TB	2015	
Australian Rose	TB	2010	
Autumn Explosion	TB	2013	
Avant-Premiere	TB	2009	
Backdraft	TB	2010	
Ballerina Pink	BB	2010	
Bandwidth	TB	2010	
Barbaro	TB	2013	
Be Still My Heart	TB	2013	
Beacon of Light	TB	2013	
Belle of Bella Vista	MTB	2013	
Bet the Farm	TB		
Better Than Butter	TB	2010	
Better Together	TB	2014	
Betty Ford	TB	2014	
Between Jobs	IB	2014	
Bevie's Delight	TB	2010	
Beyond Borders	TB	2012	
Beyond Bubbles	TB	2014	
Beyond the Reef	TB	2014	
Big And Rich	TB	2013	
Bitty Boo	LA	2014	
Blazing Gold	SDB	2013	
Blondie's Blush	TB	2013	
Blue Hues	SDB	2010	
Blue Rivulets	SPEC	2013	
Blueberry Trail	BB	2012	
Blueberry Treats	BB	2013	
Bluebird Kisses	SIB	2014	
Bluebird of Happiness	TB	2012	
Blushing Grapes	TB	2016	
BO204A	TB		
Bonjour	BB	2008	
Boot Scoot Boogie	TB	2012	
Born To Be Wild	SPEC	2010	
Bouncing Blue	TB	2014	
Boundless	TB	2010	
Bradley Badger	TB	2013	
Brainstorm	TB	2012	
Bubble Baby	TB	2014	
BUF08A	TB		
Bunny Slope	SDB	2013	
Burgundy Fireworks	SIB	2013	
Burn Notice	SDB	2014	

Cultivar	Type	Year	Comments
Burst of Light	TB	2007	
Butter Rum	IB	2013	
Butterscotch Fizz	SIB	2013	
By Dawns Early Light	TB	2013	
Candy Basket	MTB	2016	
Cape Cod Boys	SIB	2009	
Cape May	SDB	2010	
Caramel 'N Chocolate	TB	2015	
Cardinal Expression	TB	2014	
Care to Dance	TB	2013	
Carol Ellen Ramsey	BB	2011	
Carrara Cloud	TB	2012	
Carry A Torch	TB	2013	
Cheap Frills	TB	2009	
Cheerful Lass	MTB	2014	
Cherry Fling	SIB	2013	
Chihuahuan Desert	TB	2016	
Christmas Eve	TB	2010	
Citrus Smothie	TB	2014	
Civility	TB	2013	
Class Clown	TB	2010	
Coal Seams	TB	2013	
Coffeehouse Chatter	TB	2015	
Cold Fusion	TB	2011	
Colorflash	SIB	2012	
Coming About	TB	2012	
Confederate Creed	TB	2015	
Cool Change	TB	2014	
Coral Sunrise	MTB	2014	
Cosmic Delight	BB	2013	
CRCG 45-16	TB		
Cream de-la Cream	IB	2015	
Credible Witness	TB	2015	
Crestone Peak	TB	2015	
Cricket Song	MTB	2012	
Crimson Fireworks	SIB	2014	
Crunch	TB	2014	
Damsel In A Dress	TB	2014	
Dance Lessons	TB	2013	
Dancing Mood	SIB	2013	
Daring Deception	TB	2012	
Dark Wonder	BB	2012	
Dash Of Sunlight	SIB	2016	
DC-T4-07-393-4	SIB		
Deal or No Deal	TB	2014	
Debutante's Lace	TB	2014	
Deep Secret	IB	2015	
Desert Aria	TB	2014	
Desert Roundelay	TB	2012	
Destination Fabulous	TB	2015	

H
I
L
D
E
N
B
R
A
N
D
T

Cultivar	Type	Year	Comments
Destiny's Dream	IB	2011	
Devin	SDB	2014	
Devoted Daughter	IB	2013	
Dirigo Handy Andy	SIB	2012	
Do The Math	SPEC-X	2008	
Dog and Pony Show	IB	2013	
Dollie and Me	MTB	2011	
Dorothy Devenport	TB	2003	
Dots and Splashes	TB	2010	
Double Dare	BB	2014	
Double Play	SIB	2010	
Down to the Wire	TB	2015	
Downtown Brown	TB	2013	
Dreaming in Color	TB	2013	
Drink Your Tea	SIB	2014	
Early Harvest	BBRE	2014	
Earthly Pleasures	TB	2013	
Edge of Glory	TB	2012	
Edge of Heaven	TB	2013	
Edge Of Tomorrow	SIB	2015	
El Greco	TB	2010	
Elizabeth Adele	TB	2014	
Empress Ann	IB	2013	reg.
Encore Performance	SIB	2010	
Eramosa Peach Sorbet	TB	2014	
Escape from Boredom	TB	2014	
Evening Comes	SIB	2014	
Exit Strategy	TB	2015	
F01-60	TB		
F04-82A	TB		
F97-1005 AA	TB		
Fairy Sprinkles	MTB	2014	
Fallalery	TB	2010	
Fancy Me This	SIB	2012	
Fashion Leader	BB	2012	
Fashionable One	MTB	2014	
Feeling Spicy Tonite	TB	2012	
Fiddlin' Around	TB	2012	
First Lady of Spring	IB	2014	
Fisherman's Twilight	SIB	2014	
Flambeau Dancer	LA	2015	
Flaming Lips	SDB	2013	
Football Hero	TB	2015	
For Veronica	TB		
Foxy Ferret	MTB	2012	
French Lessons	TB	2014	
From Within	BB	2013	
Full of Grace	TB	2013	
Gag Gift	SDB	2013	
Garden Diva	LA	2015	

Cultivar	Type	Year	Comments
Gary Petterson	TB	2013	
Gate to Paradise	SDB	2014	
Gecko Echo	MDB	2007	
Gentle Soul	TB	2015	
Gesundheit	MTB	2012	
Get Back	TB	2015	
Gilded Girl	TB	2014	
Ginger Twist	SIB	2009	
Ginny Mitchell	TB	2013	
Glacier Melt	TB	2010	
Glitzorama	BB	2013	
Global Crossing	TB	2012	
Glorious Sky	TB	2014	
Go Lightly	TB	2014	
Going Big Time	TB	2014	
Going Dotty	MTB	2010	
Gold and Rubies	IB	2012	
Golden Apricot	SDB	2010	
Good Golly Miss Molly	TBRE	2014	
Good Morning Sunshine	TB	2014	
Got the Power	TB	2013	
Grace and Charm	BB	2013	
Gracious Me	TB	2015	
Grand Review	TB	2015	
Granny Apple	SDB	2010	
Grapenut	BB	2013	
Gypsy Gold	TB	2015	
Hail to the Chief	SIB	2012	
Hearts On Fire	TB	2014	
Heat Is On	TB	2013	
Heaven's Gift	TB	2010	
Helen Regina	IB	2013 reg.	
Hi Buddy	BB	2015	
Hico Huggins	TB	2014	
HIL06-9-8	TB		
Hollywood Villain	TB	2015	
Honeykist	TB	2011	
Honky Tonk Rumble	TB	2015	
Hoosier Belle	MTB	2012	
Hot News	MTB	2009	
How Audacious	SIB	2009	
Howard Bushnell	TB	2014	
Huggable You	MTB	2013	
Husky	TB	2014	
Hypnotist	TB	2015	
I Pink I Can	TB	2013	
Ice Adams	TB	2012	
Icefall	TB	2013	
If Not For You	TB	2010	
Impertinent	BB	2011	

H I L D E N B R A N D T

Cultivar	Type	Year	Comments
In the Zone	SDB	2014	
Insaniac	TB	2012	
Inspired Calling	TB	2012	
Italic Light	TB	2012	
It's Our Time	TB	2016	
Ittle Dew	TB	2014	
Jane M. Sadler	SIB	2006	
Jazz Beat	MTB	2012	
Jazz Pizzazz	TB	2012	
Jazzberry	TB	2013	
Jelly Bean Parade	TB	2014	
Jennasee	SIB	2014	
Jennasee_	SIB	2014	
Jennifer Stout	TB	2010	
Jim's Gem	TB	2013	
Jolly Young Man	SIB	2013	
Joyce Cole	SIB	2006	
Judy, Judy, Judy	SIB	2010	
Just A Kiss Away	TB	2009	
Just Call Me	TB	2008	
King of the Road	TB	2010	
L03-MY-rust	MTB		
Lady of Lometa	LA	2013	
Lakeside Ghost	SPEC	2012	
Late for the Party	LA	2015	
Late Frost	IB	2013 reg.	
Laughing Clown	TB	2013	
Layer Cake	TB	2015	
Legal Eagle	TB	2014	
Lemon Berry Burst	TB	2013	
Lemon Glaze	TB	2013	
Lemon Mousse	SIB	2012	
Lemony Snicket	SPEC-X	2016	
Let It Rain	TB	2012	
Let's Fly	TB		
Let's Misbehave	TB	2014	
Lezghinka	TB	2013	
Lilac Wings	MTB	2013	
Line Drive	IB	2007	
Little Blue Chip	SDB	2015	
Little Butterball	SDB	2011	
Little General	LA		
Little White Tiger	MTB	2013	
Loretta Ann	TB	2014	
Love in the Air	BB	2014	
Love Lilt	TB	2010	
Love of Life	TB	2013	
Loveable Pink	SDB	2013	
Lucy Locket	SIB	2009	
Making Time	TB	2013	

Cultivar	Type	Year	Comments
Mango Queen	TB	2013	
Mann 06-LiIT	TB		
Mann 08-FTMbr	TB		
Mary Adele	TB	2013	
May Frost	TB	2014	
Meadowgaze	TB	2009	
Mean Sharon	TB	2013	
Meerkat Manor	BB	2008	
Mescalero	IB	2014	
Metro Blue	TB	2013 reg.	
Midnight Kitty	TB	2011	
Midnight Rose	TB	2014	
Midnight Sharp	IB	2010	
Mini Me	MTB	2013	
Mink Pink	TB	2013	
Minnesota Nice	TB	2015	
Miss Apple	SIB	2009	
Miss Fluffy	TB	2014	
Molten Flame	TB	2013	
Monarch's Cape	TB	2015	
Montegut	LA	2011	
Moonlight Empress	TB	2010	
Moonlight Fair	SIB	2011	
Moose Tracks	MTB	2015	
Morgan	SDB	2014	
Morpheus	TB	2014	
Mr. Moonlight	TB	2012	
My Butterfly Kisses	TB	2013	
My Cher of Happiness	BB	2013	
My Girl Emily	SIB	2012	
My Tina	TB	2007	
Neptune's Gold	SIB	2014	
Netted Gold	MTB	2015	
New Rules	TB	2013	
Ninja Warrior	TB	2016	
No Place Like Home	TB	2011	
No Restraint	IB	2013	
Not a Clue	TB	2014	
Note To God	TB	2012	
Nothing But The Blues	SIB	2008	
O-11-V-13	TB		
Oh Carol	TB	2012	
On Mulberry Street	SIB	2012	
One More Night	TB	2010	
One Step Beyond	TB	2014	
One Trick Pony	TB	2015 reg.	
Orangelo	TB	2009	
Organic Mechanic	TB	2014	
Oui Madame	TB	2013	
Paprikash	SIB	2012	

H
I
L
D
E
N
B
R
A
N
D
T

Cultivar	Type	Year	Comments
Pass the Pepper	BB	2012	
Passionate Embrace	TB	2010	
PBD 09-2	TB		
PBD 09-4	TB		
Peace of Sky	SIB	2014	
Peach Sorbet	LA	2015	
Petite Purple	SIB	2012	
Pewter and Gold	TB	2006	
Pink For Feye	TB	2015	
Pixie Magic	TB	2013	
Planet Hollywood	TB	2013	
Platinum Jubilee	TB	2013	
Plum Happiness	MTB	2014	
Point Counterpoint	TB	2009	
Point to the Sun	TB	2013	
Pool Party	SIB	2009	
Portland Pink	SDB	2015	
Powerhouse Sequel	TB	2015	
Pretty Priscilla	SDB	2013	
Prince Igor	TB	2011	
Princess Grace	TB	2012	
Princess Isabella	TB	2012	
Princess Sarah	IB	2013	reg.
Purple Essence	TB	2010	
Purplenique	TB	2015	
Purrfectly Peachy	TB	2013	
Put Another Nickel In	TB	2010	
Put Upon	BB	2012	
Quackery	TB	2014	
Queen Of Everything	TB	2015	
Quite Ahh Sight	TB	2014	
Ragtop Day	TB	2014	
Rainbow Canyon	TB	2014	
Raspberry Shocker	MTB	2015	
Raspberry Swirl	TB	2009	
Red Dirt Road	TB	2013	
Red Velvet Nights	TB	2012	
Restless Tide	TB	2015	
Ribbons and Lace	TB	2015	
Ride Vaquero	TB	2013	
Risk Taker	TB	2014	
Robin's Little Sister	BB		
Rock Climber	TB	2012	
Roly Poly	SDB	2011	
Rose City	MTB	2015	
Royal Retinue	TB	2014	
Ruth Holbrook	TB	2014	
S-5-T	SPEC		
S5TXOG-1	SPEC-X		
S5TXOG-3	SPEC-X		

Cultivar	Type	Year	Comments
S5TXOG-5	SPEC-X		
S5TXOG-7	SPEC-X		
S5TXOG-8	SPEC-X		
Safari Adventure	TB	2015	
Sally's Smile	LA	2011	
Sandy River Belle	SIB	2011	
Sari's Dance	MTB	2008	
Say Please	SIB	2013	
Say You Will	TB	2010	
Scrambled	MTB	2014	
Scrivener	IB	2011	
Selah Christine	TB	2012	
Serving Wench	TB	2015	
Sights Unlimited	TB	2014	
Silver Girl	SIB	2012	
Simon Says	SIB	2007	
Simply Coral	TB	2014	
Simply Cute	SPEC-X	2014	
Single Malt	TB	2010	
Skeedaddle	TB	2014	
Skirting The Issue	TB	2014	
Slew O' Gold	TB	2013	
Snow Day	TB	2014	
So Unusual	TB	2014	
Soda Fountain Shuffle	TB	2009 reg	
Solar Energy	SIB	2014	
Something Shocking	SIB	2013	
Space And Time	TB	2013	
SPH02Q261	SPEC-X		
Spiral Galaxy	TB	2014	
Spirit Falls	TB	2012	
Spiritual Harmony	TB	2013	
Splatter Art	TB	2013	
Spring Announcement	TB	2009	
Static Electricity	TB	2013	
Step Back	TB	2014	
Stole the Show	TB	2013	
Strawberry Sorbet	TB	2010	
Subtle Beauty	TB	2011	
Sub-Zero	TB	2105	
Sugar Rush	SIB	2008	
Sugarplum Dream	IB	2015	
Sun Cherub	SDB	2015	
Sunrise Elegy	TB	2012	
Sushi	SPEC	2013	
Swing Velvet	TB	2014	
Swirling Skirts	TB	2014	
Swoosh	TB	2012	
Sylvia's Love	SIB	2007	
T02-2B1	MTB		

H
I
L
D
E
N
B
R
A
N
D
T

Cultivar	Type	Year	Comments
T114-9	MTB		
Tahitian Treat	TB	2013	
Tail Hook	TB	2011	
Tango to the Moonlight	TB	2011	
Taylor P. Made	TB	2012	
Teagan	SDB	2009	
The King Is Coming	TB	2014	
Thirty Fathoms	SIB	2016	
Three Part Harmony	TB	2014	
Tic Tac Toe	MTB	2010	
Tidal Raves	TB	2014	
Tina Louise	BB	2009	
Tina's Gift	TB	2014	
Tiny Tracks	SDB	2011	
Toad	TB	2015	
Top Down	TB	2015	
Trip To Paris	SIB	2009	
Triple Dip	TB	2014	
Twilight of the Gods	TB	2007	
Twist of Sheree	TB	2012	
U08-6V	TB		
V-10-V-12	TB		
Valley Of The Sun	TB	2015	
Vanilla Frappe	TB	2011	
Velvet Intrigue	MTB	2010	
Vermeer	TB	2013	
Visigoth	TB	2013	
Vow of Silence	TB	2014	
Voyager	TB	2014	
W69B-7	MTB		
Water of Life	TB	2011	
What A Beauty	TB	2015	
What It's Worth	TB	2014	
What's New Pussycat	BB	2012	
Who's On First	SPEC-X	2008	
Who's Ya Mama	LA	2015	
Why Cows Gossip	TB	2015	
Wicked Good	TB	2012	
Wild	BB	2012	
Wild and Crazy	TB	2014	
Wildcat Madness	TB	2015	
Will and Adelle	TB	2014	
Witchfire	IB	2013	
Witty	IB	2012	
Wompanog Warrior	TB	2014	
Wright's Flights	IB	2009	
X-5	SPEC-X		
X-6	SPEC-X		
Yankee Darling	LA	2015	
Yeti Again	TB	2013	

For Your Records Only

*You may record your choices here.
Do not remove this page from the book*

THE PRESIDENT'S CUP

In Region Favorite Iris Cultivar

THE FRANKLIN COOK MEMORIAL CUP

Outside Region Favorite Iris Cultivar

THE BEN R. HAGER CUP

Favorite Median Iris Cultivar (SDB, IB, MTB, or BB)

THE LLOYD ZURBRIGG - CLARENCE MAHAN AWARD

Best Seedling

For Your Records Only

***You may record your choices here.
Do not remove this page from the book***

My Favorite 15 Guest Irises

1. _____
2. _____
3. _____
4. _____
5. _____
6. _____
7. _____
8. _____
9. _____
10. _____
11. _____
12. _____
13. _____
14. _____
15. _____

THE PRESIDENT'S CUP

Vote for your favorite introduced iris originated by a hybridizer from the **home region** (Region 3 - New Jersey, Pennsylvania, and Delaware). All classifications are eligible. Variety does not have to appear in the convention booklet as an official convention plant.

Variety

THE FRANKLIN COOK MEMORIAL CUP

Vote for your favorite introduced iris originated by a hybridizer from **outside the home region**. All classifications are eligible. Variety does not have to appear in the convention booklet as an official convention plant.

Variety

THE BEN R. HAGER CUP

Vote for your favorite introduced **Median iris** of the convention. May be from any hybridizer from any region. Variety does not have to appear in the convention booklet as an official convention guest. Any variety from the recognized Median classifications is eligible: Standard Dwarf Bearded (SDB), Intermediate Bearded Iris (IB), Miniature Tall Bearded (MTB), or Bearded Bearded (BB).

Variety

THE LLOYD ZURBRIGG - CLARENCE MAHAN AWARD

Vote for the best seedling seen in the convention gardens. May be from any hybridizer from any region. Variety does not have to appear in the convention booklet as an official convention guest.

Variety

FAVORITE GUEST IRISES BALLOT

Vote for up to 15 guest irises which you considered outstanding. Eligibility is restricted to registered irises (introduced or not introduced) which are **official convention guest irises**. They must be listed in the convention booklet and must have been seen growing and in bloom on the meeting's official garden tour. All classifications are eligible.

1. _____
2. _____
3. _____
4. _____
5. _____
6. _____
7. _____
8. _____
9. _____
10. _____
11. _____
12. _____
13. _____
14. _____
15. _____

You may complete the ballot and give it to your bus captain during the trip back to the convention hotel on the final day of the convention. Otherwise, please drop the ballot in its designated ballot box at the convention registration desk in the hotel by 4:00 pm or mail it by June 15, 2016 to Paul W. Gossett, 1847 East 16th Place, Tulsa OK 74104-4923

RHYTHM OF THE PRAIRIE



DES MOINES, IOWA 2017